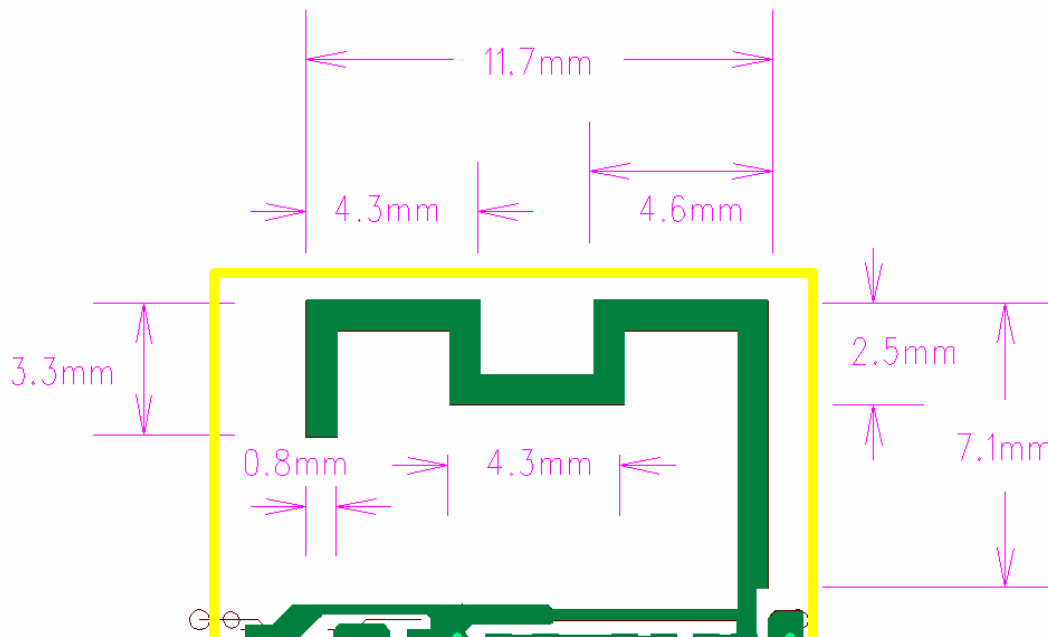


BP20422 Antenna Specification



General Description

The antenna is specifically for bluetooth mouse application. Its operation is in 2.4GHz band. The antenna type is meander stripe PCB antenna similar to those of the F-antenna.

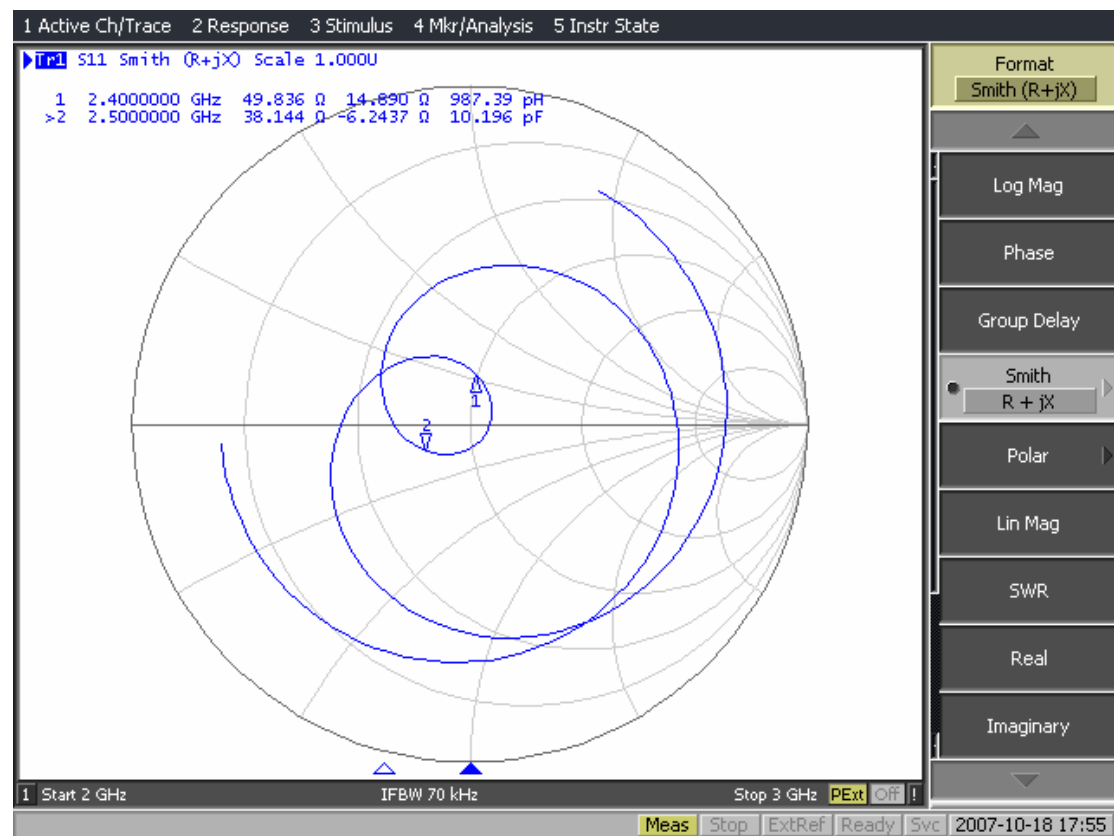
Features

- Operating frequencies: 2.4GHz ~ 2.4835GHz
- Antenna average gain: -2.3dBi. @2.450GHz
- For bluetooth mouse application

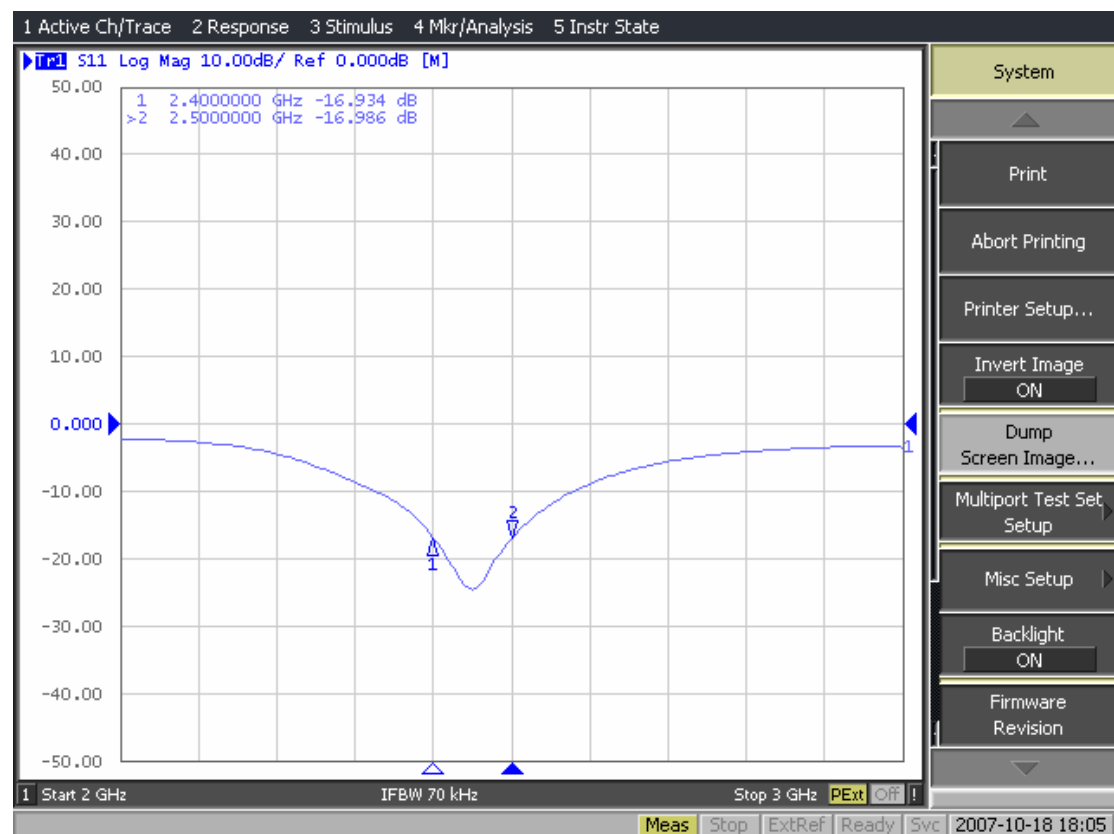
Antenna Electrical Characteristic:

- Input VSWR: 1.5:1
- Peak gain: 1.5dBi @2.450GHz
- Polarization: Horizontal/Max
- Operating frequencies: 2.4GHz ~ 2.4835GHz

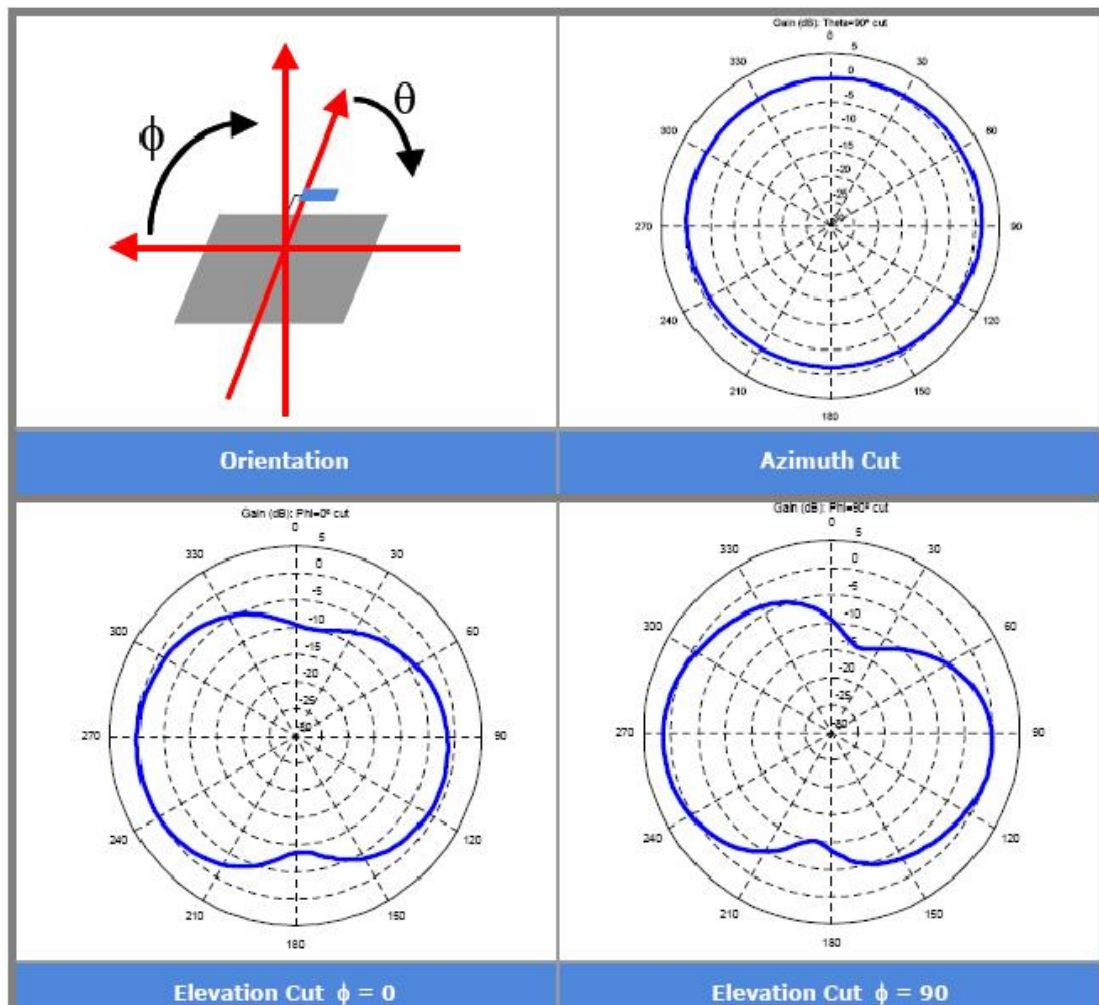
A. S11(Smith chart)



B. S11(Return loss)



C. Radiation Characteristic



Peak gain : 1.5dBi

Average gain : -2.3dBi