

REV	REF.	DESCRIPTION	INPUT BY	APP	DATE
1	4108	Added JPEGs of ZTX965D Enclosure	Al Holmes	A Rocco	4-1-08



ZTX Wireless, Inc.

8886 N. Government Way
Hayden, Idaho 83835

NOTICE OF PROPRIETARY INFORMATION

Information contained herein is proprietary and is the property of ZTX WIRELESS INCORPORATED. Where furnished with a proposal, the recipient shall use it solely to evaluate the proposal. Where furnished to a customer it shall be used solely for purposes of inspection, installation, or maintenance. Where furnished to a supplier, it shall be used solely in the performance of work contracted by this company. The information shall not be used or disclosed by the recipient for any other purpose whatsoever.

APPROVALS		Unless otherwise specified dimensions are in inches. NOT TO SCALE DRAWING		ZTX WIRELESS, 8886 N. GOVERNMENT WAY STE. I, HAYDEN, ID. 83835
DWG. 91-00130-15	DATE 2-6-08	MKTG. LINDA TOMBLIN	DATE 2-6-08	TITLE: PRODUCT DRAWING ZTX965D JPEG Top, Bottom and Side PCBA - Enclosure Complete
MECH. ENG. AL HOLMES	DATE 2-6-08	MKTG. BRUCE TOMBLIN	DATE 2-6-08	
ELECT ENG. ART ROCCO	DATE 2-6-08	MKTG.	DATE	
MFG. ENG. AL HOLMES	DATE 2-6-08	S.Q.A. Mark mcEntire	DATE 4-1-08	Drawing Number 91-00130-15
SW ENG. AL HOLMES	DATE 2-6-08	ENG. MGR. AL HOLMES	DATE 2-6-08	PAGE 1 OF 4

1 PURPOSE

The purpose of this document is to record by JPEG of the top, bottom and side views of the 20-00130-05 Rev 3 (ZTX965D PCBA) Figures 1, 2 and 3 and the 40-00130-05 Rev 1 ZTX965D Top Assembly Figures 4, 5 and 6.

P/N 32-00130-05 (ZTX965D) REV 1

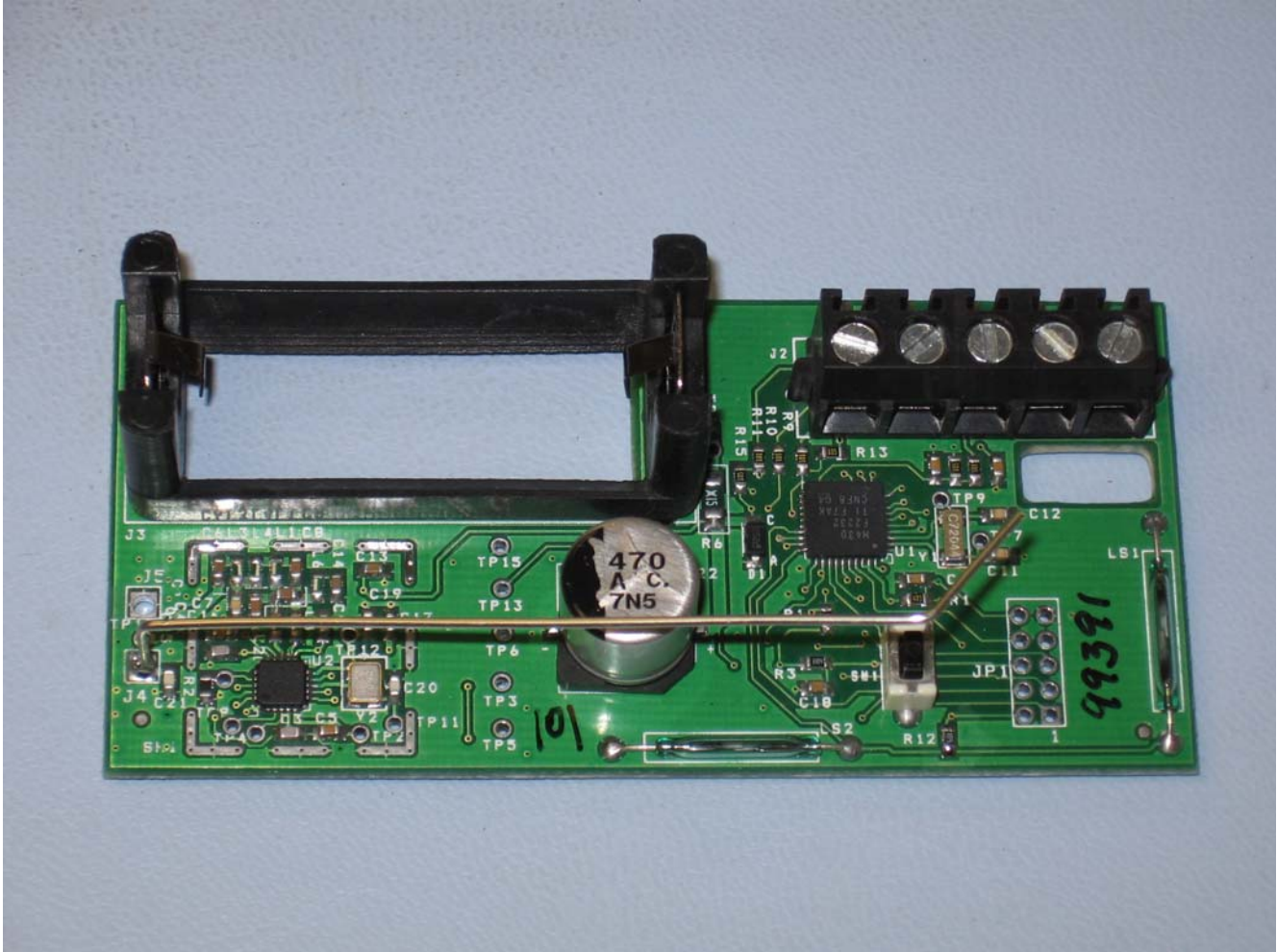


Figure 1

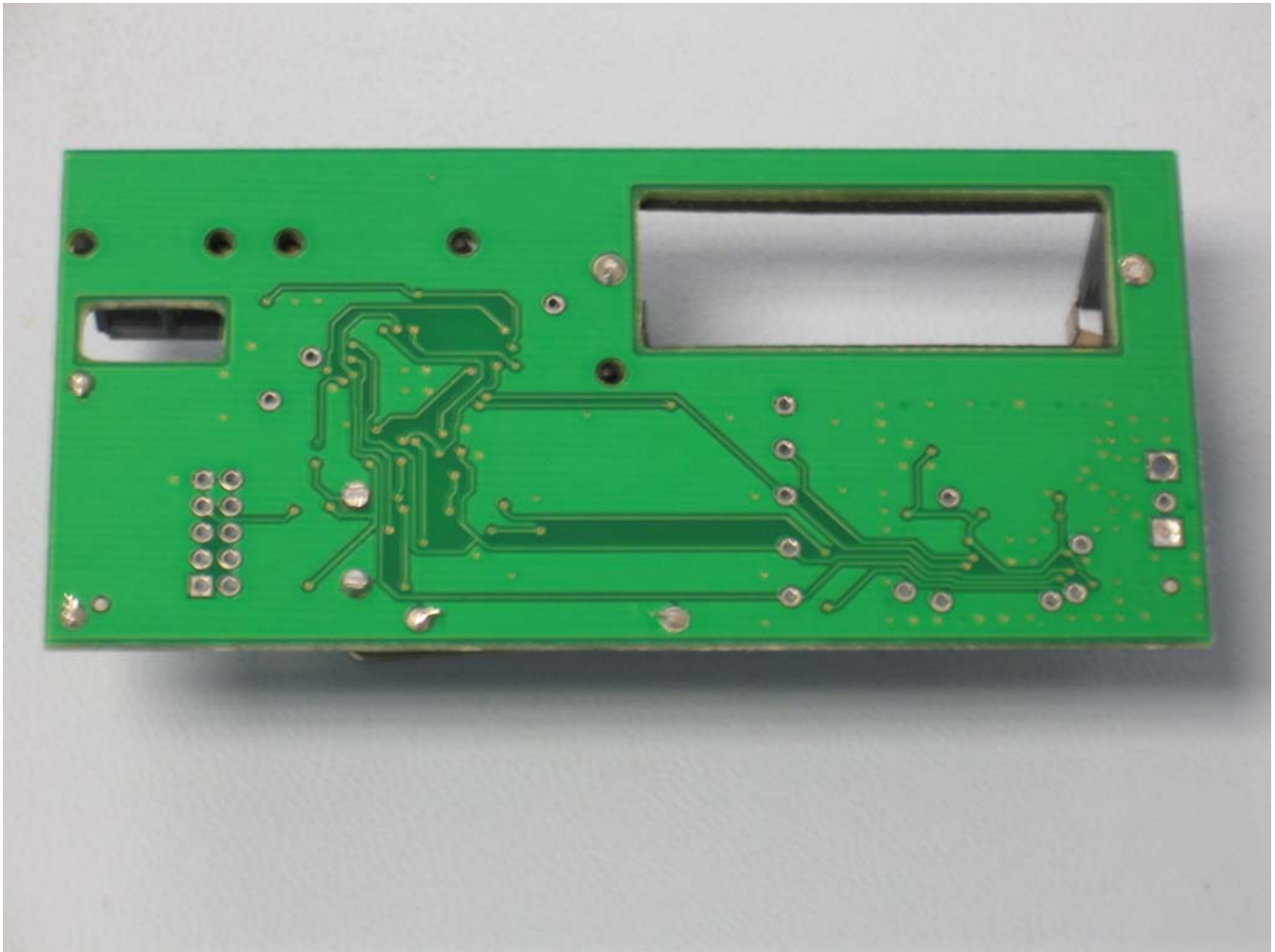


Figure 2

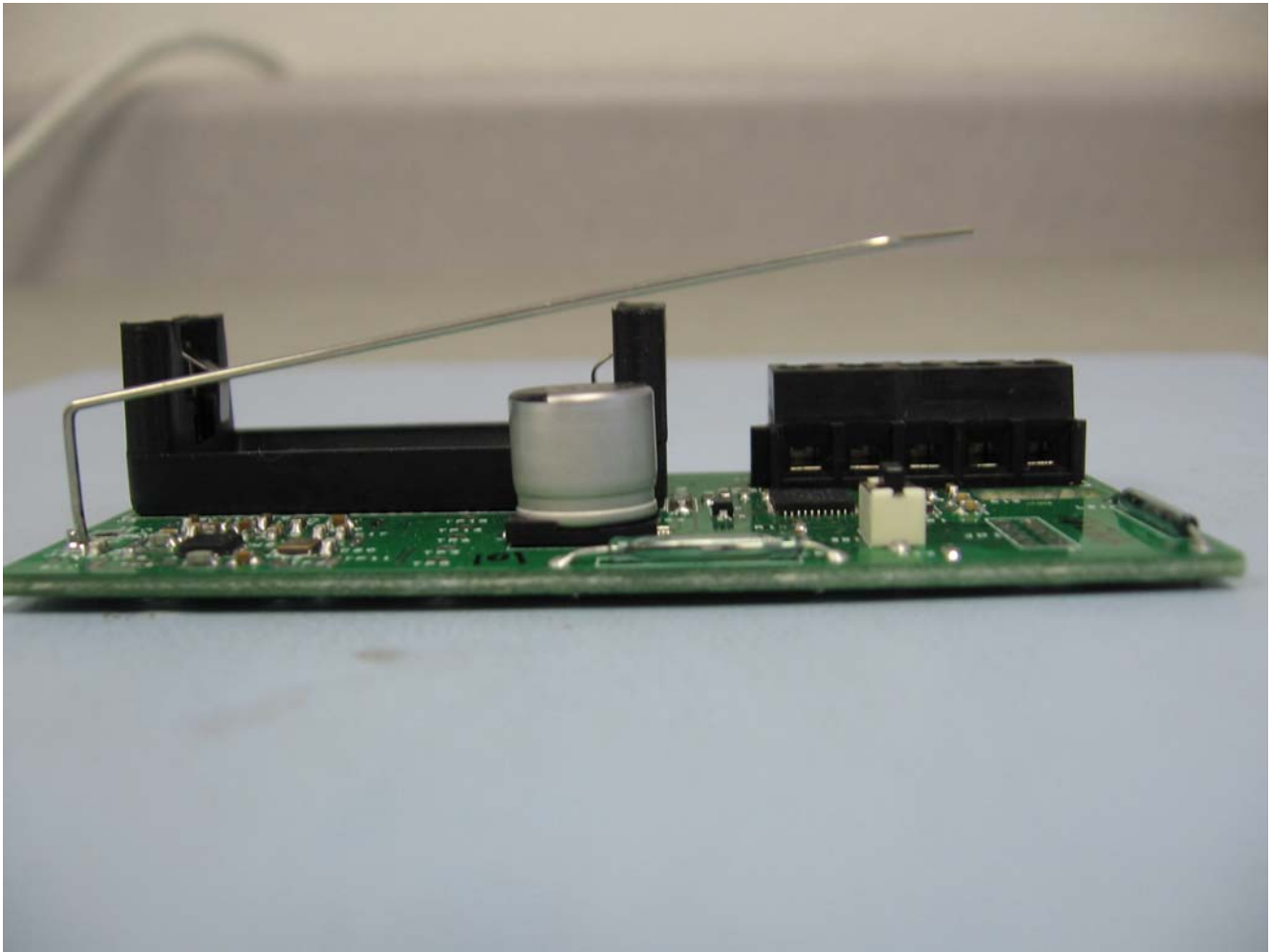


Figure 3