



EQUIPMENT FCC ID : V33POSTL0H10

Canada IC : 7489D-POSTL0H10

Exhibit 9

INTERNAL PHOTOS

Page : 1/9

Written by : JL JAMET

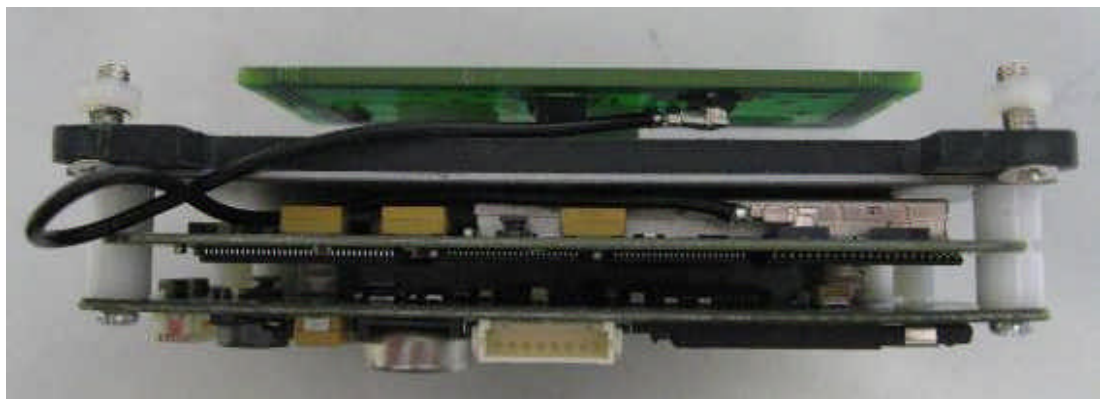
15 February 2010

Test report # 134114-CC-1-a

## 1.2 DETAILS:

### 1.2.1 RFIDMODULE

RF1 board front view





EQUIPMENT FCC ID : V33POSTL0H10

Canada IC : 7489D-POSTL0H10

Exhibit 9

INTERNAL PHOTOS

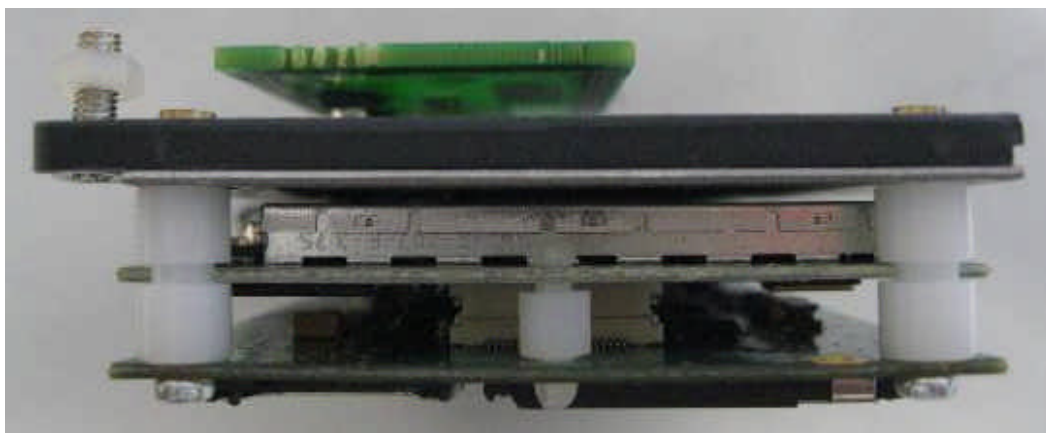
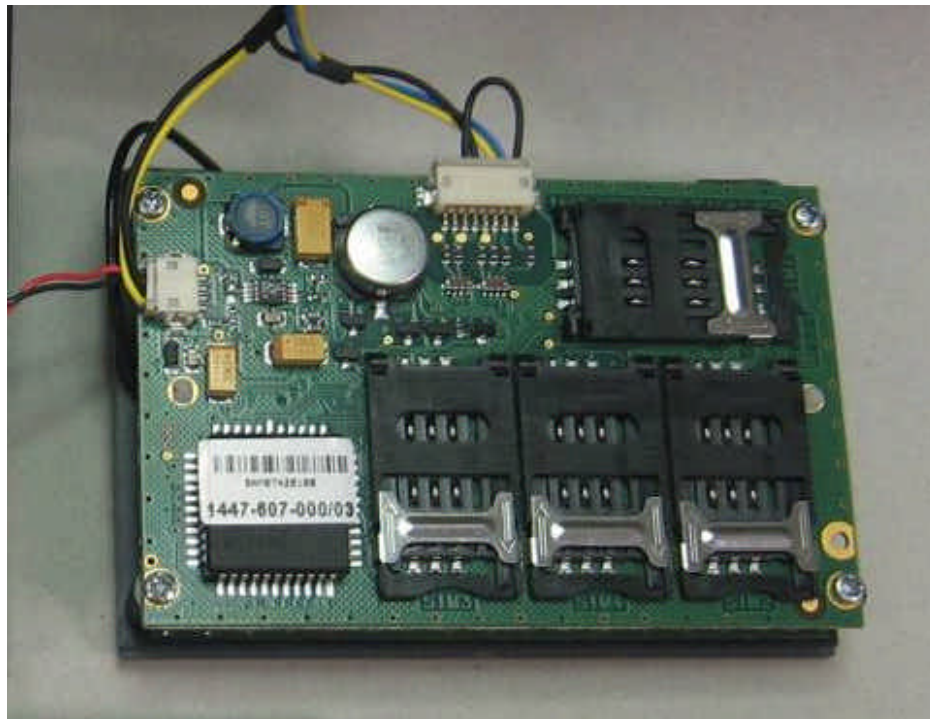
Page : 2/9

Written by : JL JAMET

15 February 2010

Test report # 134114-CC-1-a

Rear view





EQUIPMENT FCC ID : V33POSTL0H10

Canada IC : 7489D-POSTL0H10

Exhibit 9

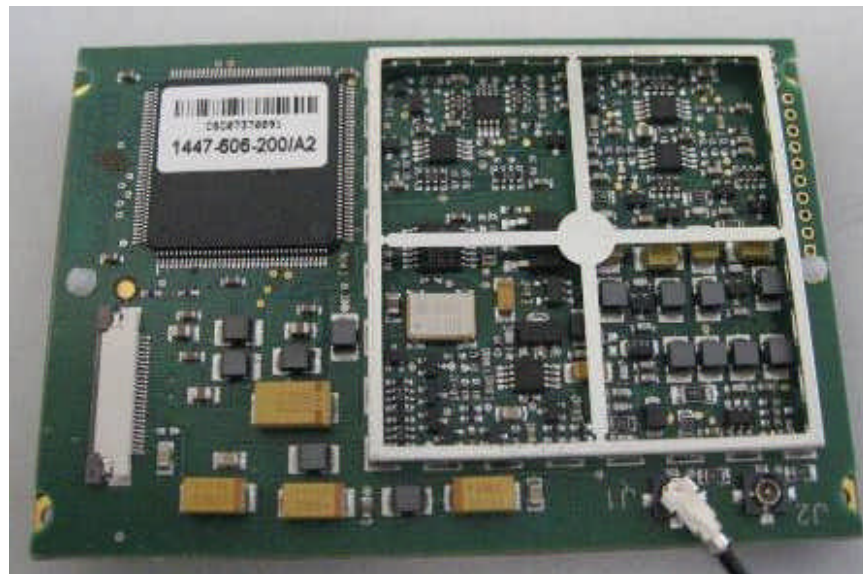
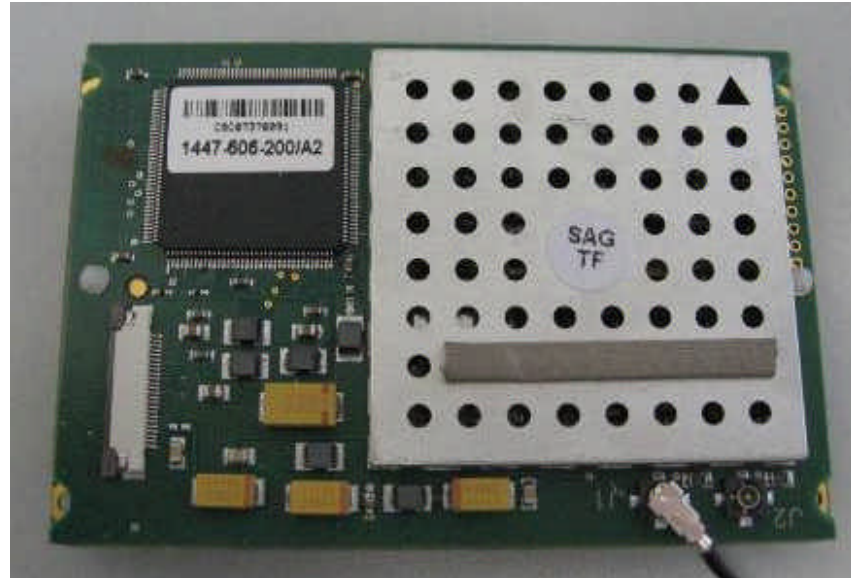
INTERNAL PHOTOS

Page : 3/9

Written by : JL JAMET

15 February 2010

Test report # 134114-CC-1-a







EQUIPMENT FCC ID : V33POSTL0H10

Canada IC : 7489D-POSTL0H10

Exhibit 9

INTERNAL PHOTOS

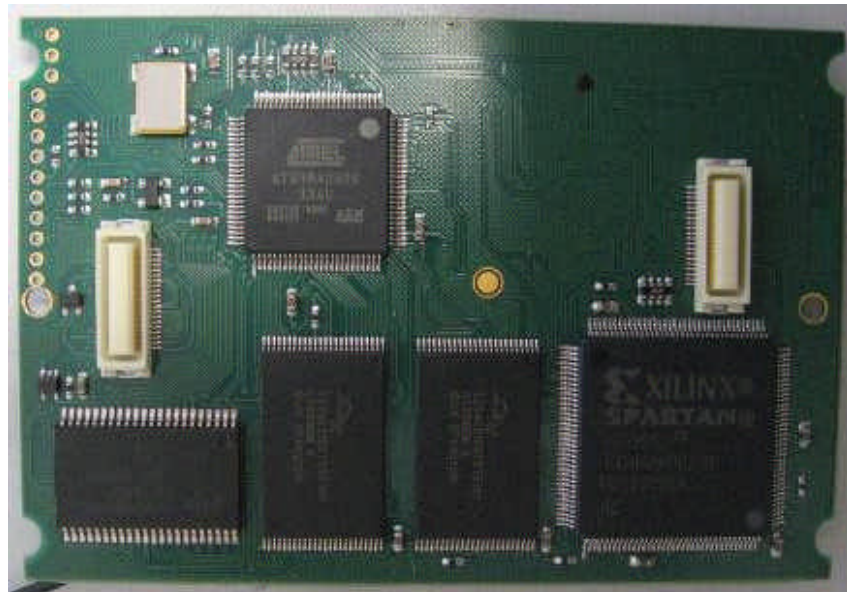
Page : 4/9

Written by : JL JAMET

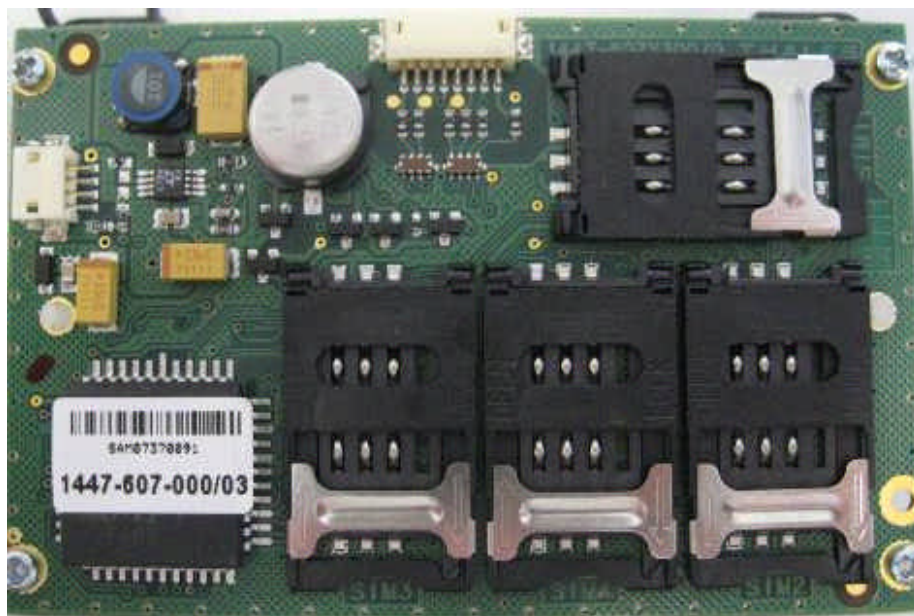
15 February 2010

Test report # 134114-CC-1-a

RF1 board rear side



RF2 board front side





EQUIPMENT FCC ID : V33POSTL0H10

Canada IC : 7489D-POSTL0H10

Exhibit 9

INTERNAL PHOTOS

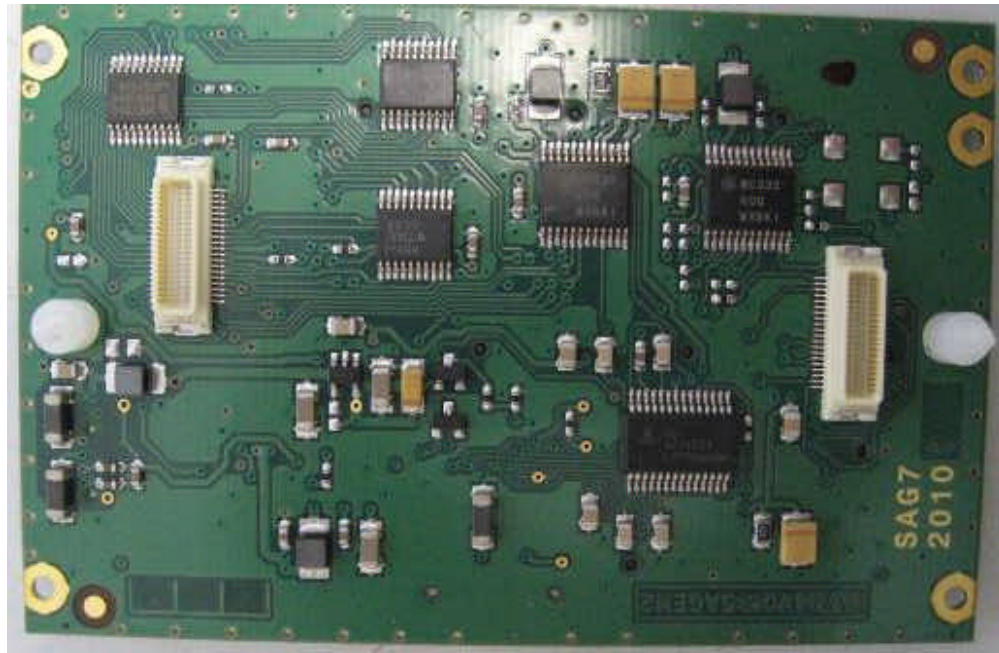
Page : 5/9

Written by : JL JAMET

15 February 2010

Test report # 134114-CC-1-a

RF2 board rear side



Shielding





EQUIPMENT FCC ID : V33POSTL0H10

Canada IC : 7489D-POSTL0H10

Exhibit 9

INTERNAL PHOTOS

Page : 6/9

Written by : JL JAMET

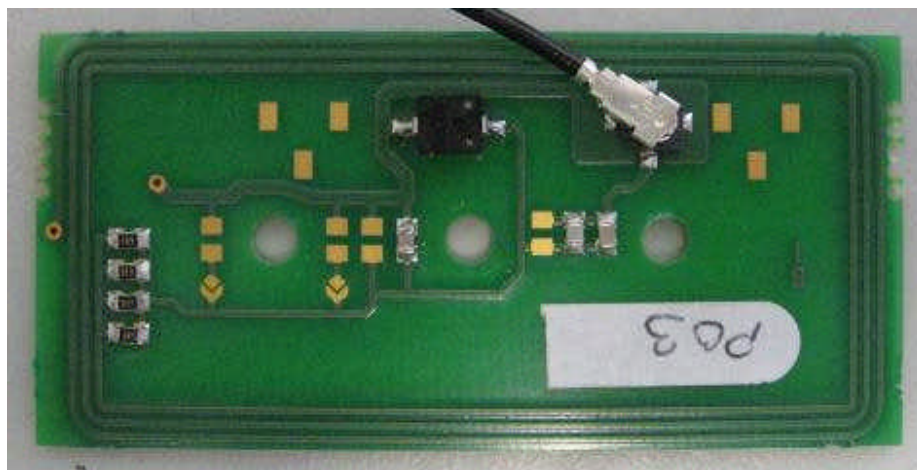
15 February 2010

Test report # 134114-CC-1-a

Antenna board front side



Antenna board rear side







EQUIPMENT FCC ID : V33POSTL0H10

Canada IC : 7489D-POSTL0H10

Exhibit 9

INTERNAL PHOTOS

Page : 7/9

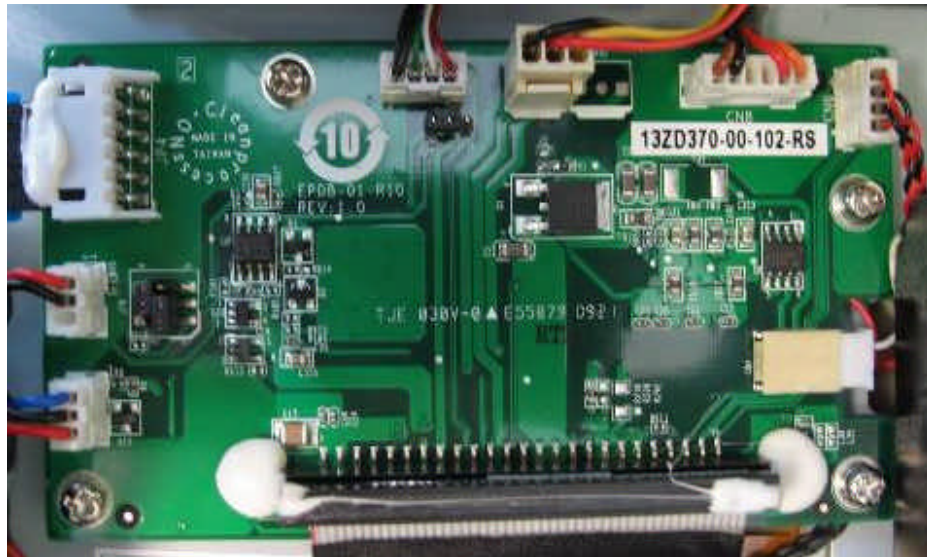
Written by : JL JAMET

15 February 2010

Test report # 134114-CC-1-a

## 1.2.2 LPOSPART

Display board



HDD





EQUIPMENT FCC ID : V33POSTL0H10

**Canada IC : 7489D-POSTL0H10**

## Exhibit 9

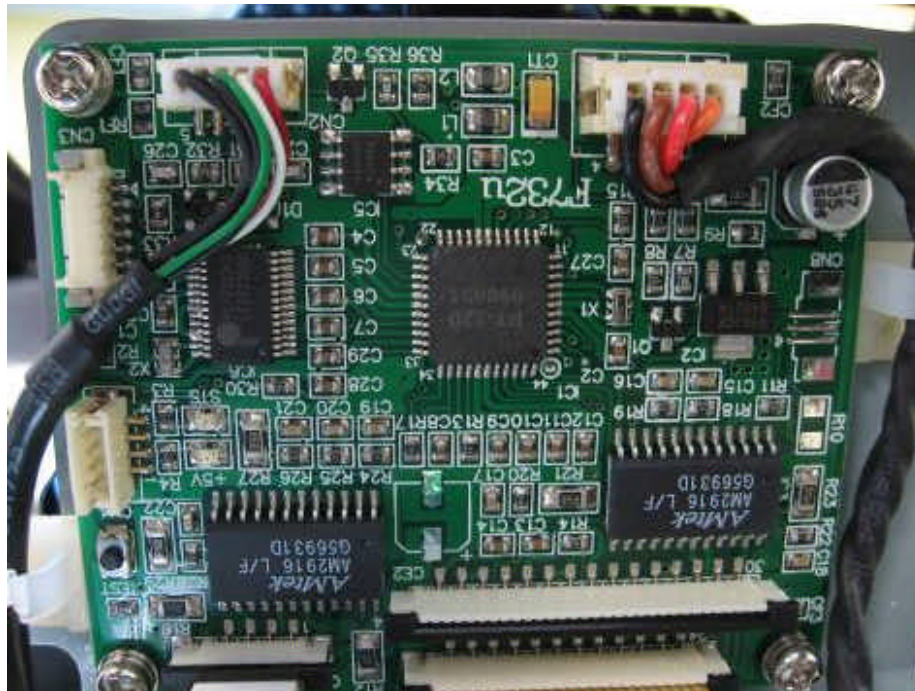
## INTERNAL PHOTOS

Page : 8/9

Written by : JL JAMET

15 February 2010

**Test report # 134114-CC-1-a**







**EQUIPMENT FCC ID : V33POSTL0H10**  
**Canada IC : 7489D-POSTL0H10**  
**Exhibit 9**  
**INTERNAL PHOTOS**

Page : 9/9

Written by : JL JAMET

15 February 2010

Test report # 134114-CC-1-a

---

Terminal motherboard

