

Charging Case

Earbuds

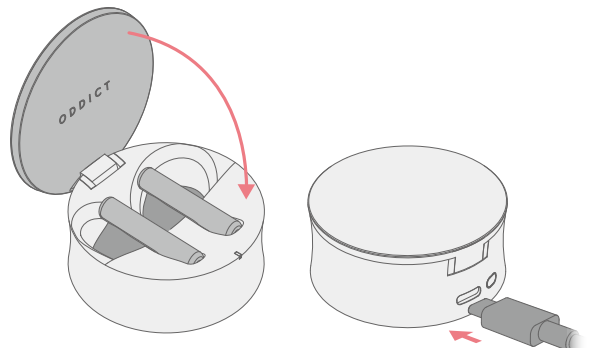
Charging Cable

Quick Guide

Warranty Card

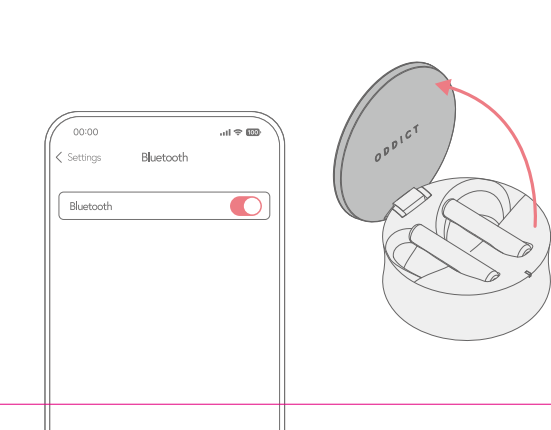
1 Place both earbuds in the case, close the case cover and charge for at least 10 minutes before using for the first time.

이어버즈를 충전 케이스에 넣고 덮개를 닫은 후 최소 10분 동안 충전 후 사용하십시오.



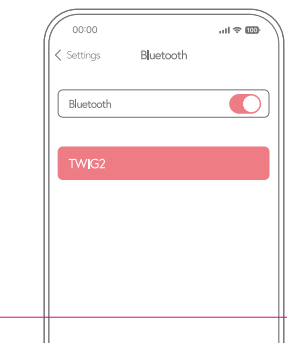
2 Enable Bluetooth on your device and flip open the case cover. Pairing mode will be activated in 5 seconds.

연결하려는 디바이스의 Bluetooth를 활성화하고 충전 케이스 덮개를 엽니다.
5초 뒤 페어링 준비 상태가 됩니다.



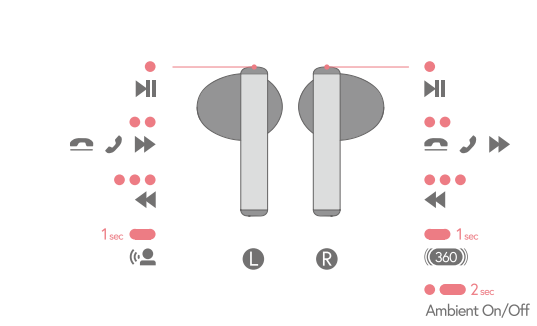
3 Select TWIG2 in the Bluetooth settings of your device and it will be connected to your device via Bluetooth. This procedure will need to be repeated every time you pair TWIG2 with a new device. When removing earbuds from the case, they will automatically reconnect to the last device the TWIG2 were paired with.

블루투스 설정에서 기기 검색 후 TWIG2를 선택하면 페어링이 완료됩니다.
TWIG2를 새 장치와 페어링 할 때마다 이 절차를 반복해야 합니다.
이어폰을 케이스에서 꺼낼 때 자동으로 연결되었던 기기의 자동 연결 됩니다.



When the earbuds connect to your device via Bluetooth, you will hear a high-pitched marimba tone. Once you place the earbuds in your ears, you will hear a low-pitched synth tone, indicating your device and earbuds are connected and ready to use.

이어버즈가 기기와 연결되면 '블루투스 연결음(높은 마림바사운드)'으로 알림을 줍니다. 이어버즈를 착용하면 센서가 인식되면서 '착용 알림음(낮은 신스사운드)'이 나옵니다.



▶ Double-Tap ●● to accept / end call.
전화를 받거나 종료하려면 두 번 탭 ●● 하십시오.

▶ Tap once ●● to play / pause.
재생 또는 일시 정지를하려면 한번 탭 ●● 하십시오.

▶ Double-Tap ●● to skip to the next song.
다음 곡 검색 시 두 번 탭 ●● 하십시오.

▶ Triple-Tap ●●●● to skip to the previous song.
이전 곡 검색 시 세 번 탭 ●●●● 하십시오.

▶ (🎧) Press and release the left earbud for 1 second to activate voice assistant apps like Siri or Google Assistant.
음성명령(Siri, Google Assistant etc.)을 활성화하려면 L쪽 이어버드를 ● 1초간 누른 후 손을 떼십시오.

(360) Press and hold the right earbud for 1 second to activate 360 Spatial Audio.
360 공간사운드(360 Spatial Audio)을 활성화하려면 R쪽 이어버드를 ● 1초간 누르십시오.

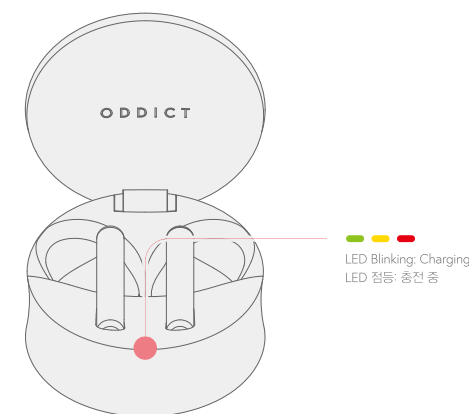
Ambient On/Off

Wear both earbuds, tap the right earbud once and press again for 2 seconds to enable Ambient Mode.
이어버드 L/R 동시 착용 후, R쪽 이어버드를 한번 탭 ● 하고 다시 2초간 누르십시오. 외부 소리들이 활성화 됩니다.



oddict.co.kr | oddictofficial.com

The earbuds will begin charging once they are placed in the case.
이어버즈는 케이스에 넣으면 충전이 시작됩니다.



Option 1. Use USB Type-C cable






Option 2. Place the case on the charging pad with the aluminum side facing up.

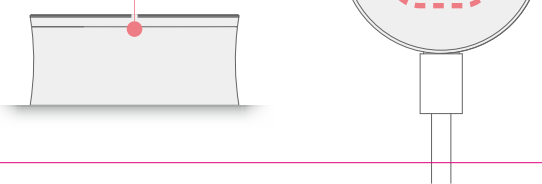
※ The wireless charging coil is located in the center of the bottom case.

Option 1. Type-C 케이블을 사용하여 충전 할 수 있습니다.

Option 2. 무선 충전패드에서 케이스의 알루미늄면이 커버 위로 오도록 돌려 충전할 수 있습니다.

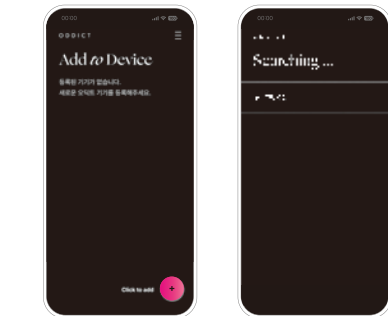
※ 무선 충전코일은 케이스 후면 중앙에 위치 하고 있습니다.

-  Battery level is below 30%
배터리 30% 이하
-  Battery level is between 30~60%
배터리 30~60%
-  Battery level is between 60~100%
배터리 60~100%
-  Fully charged (LED will turn off after 10 sec)
충전 완료 (10초 점등 후 소등)
-  Charging paused due to abnormal temperature
온도 이상으로 충전 중단



1 Download and open the ODDICT App, then register or log in.
Press (+), find and select TWIG2 to add to device.
※ Please note that the app won't recognize TWIG2 unless it has been paired with the device on Bluetooth settings first.

ODDICT 앱을 다운로드 후 실행하여 회원가입 / 로그인을 하십시오.
TWIG2를 추가하고 페어링 완료 후 앱 화면의 '+'를 터치하여 연결된 이어버즈를 찾아 기기를 지정하십시오.



2 Fine-tune your sound using the app's EQ and experience additional features like the 360 Spatial Audio.

앱 연결 후, 앱에서 TWIG2의 부가 기능 설정을 하실 수 있습니다.



FCC Compliance Information
FCC ID: V28-TWJ62

This device complies with Part 15 of FCC Rules.
 Operation is subject to the following two conditions:
 (1) This device may not cause harmful interference, and (2) this device must accept any interference received, including interference that may cause undesired operation.

Information to the user:
 NOTE: This equipment has been tested and found to comply with limits for a Class B digital device, pursuant to Part 15 of the FCC Rules. These limits are designed to provide reasonable protection against harmful interference in a residential installation. This equipment generates, uses and can radiate radio frequency energy and, if not installed and used in accordance with the instructions, may cause interference to radio or television reception. However, there is no guarantee that interference will not occur in a particular installation. If this equipment does cause harmful interference to radio or television reception, which can be determined by turning the equipment off and on, the user is encouraged to try the correct the interference by one or more of the following measures:

- Reorient or relocate the receiving antenna.
- Increase the separation between the equipment and receiver.
- Connect the equipment into an outlet on a circuit different from that to which the receiver is connected.
- Consult the dealer or an experienced radio/TV technician for help.

USER CAUTION :
Changes or modifications not expressly approved by the party responsible for compliance could void the user's authority to operate the equipment.

IC Compliance Information
IC : 10488A-TWIG2

This device complies with Industry Canada's licence-exempt RSSs. Operation is subject to the following two conditions:

- (1) This device may not cause interference, and
- (2) This device must accept any interference, including interference that may cause undesired operation of the device.

This equipment complies with IC radiation exposure limits set forth for an uncontrolled environment and meets RSS-02 of the IC radio frequency (RF) Exposure rules. This equipment complies with FCC radiation exposure limits set forth for an uncontrolled environment and meets the FCC radio frequency (RF) Exposure Guidelines.

En français :

Pour la clientèle au Canada

L'émetteur/récepteur exempt de licence contenu dans le présent appareil est conforme aux CNR d'interférence, Sciences et Développement économique Canada applicables aux deux conditions suivantes :

- 1) l'appareil ne doit pas produire de brouillage;
- 2) l'utilisateur de l'appareil doit accepter tout brouillage radioélectrique subi, même si le brouillage est susceptible d'en compromettre le fonctionnement.

TWIG2 est testé et jugé conforme aux limites d'exposition aux rayonnements ISDE énoncées pour un environnement non contrôlé et respecte les règles d'exposition aux fréquences radioélectriques (RF) CNR-02 de l'ISDE.

인증사항
 상호명: 크레신 주식회사 기재재 명칭: 특정소출력 무선기기 (무선데이터통신시스템용 무선기기) 모델명: TWIG2
 제조시기: 별도표기 제조자 / 제조국가: 크레신 주식회사 / 베트남 적합성평가 번호: R-C-CRE-TWIG2

Operating Temperature 0 ~ 45 °C (32 ~ 113 °F) / 동작 온도 : 0 ~ 45 °C



ODDICT

True Wireless Earphones

TWIG2