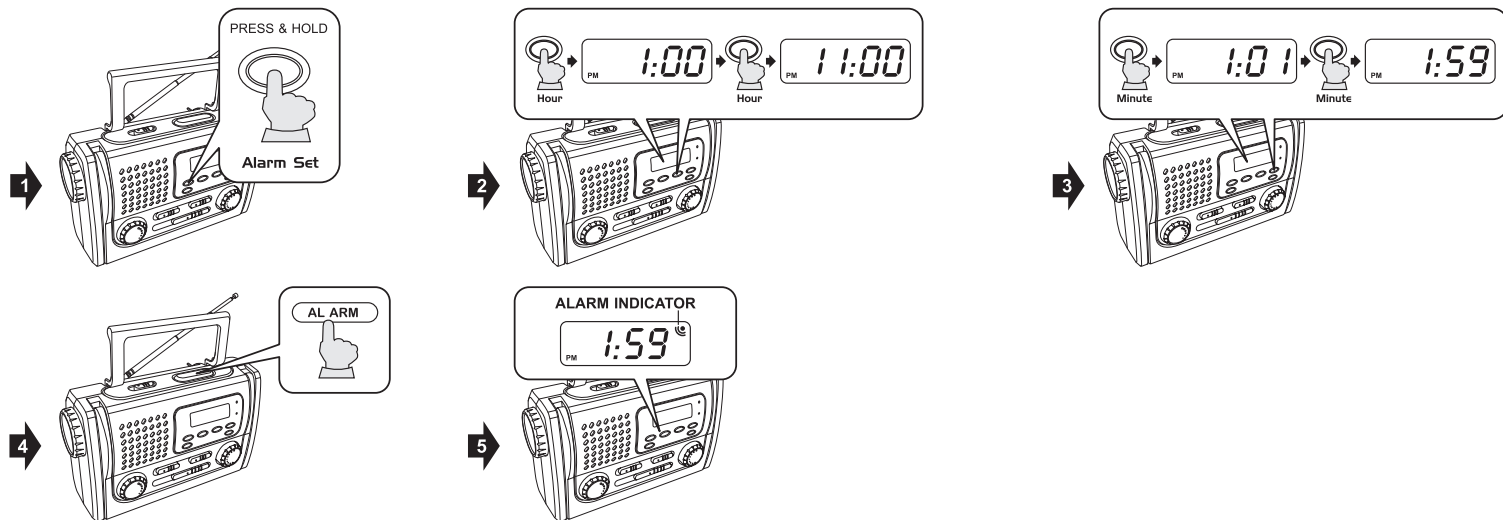
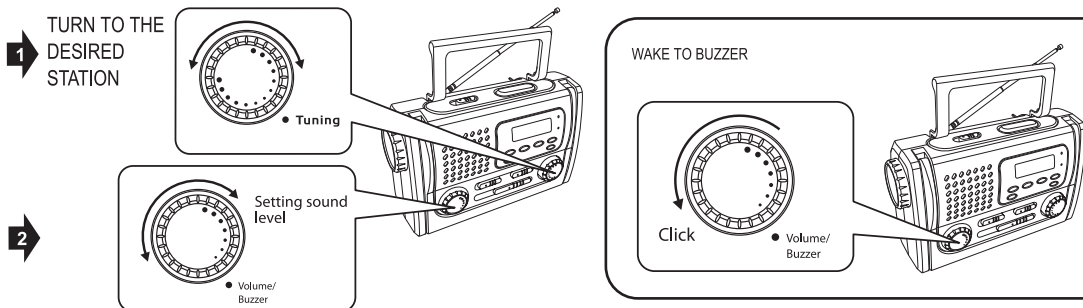


SETTING THE ALARM

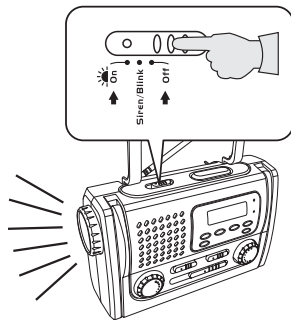


WAKE TO RADIO OR ALARM BUZZER

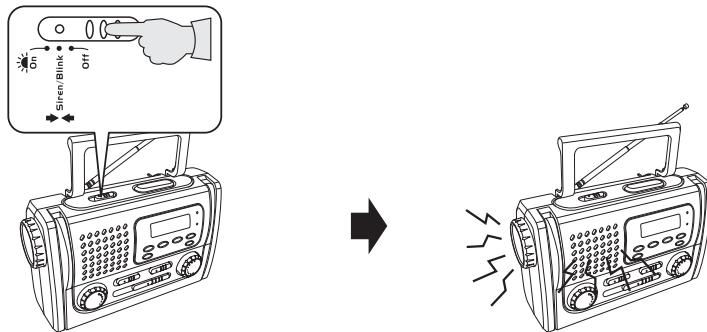


Note: When the alarm buzzer sounds, press the alarm button once, the BUZZER will turn off and the alarm will automatically set for the same time the following day. Press the alarm button two times, the alarm indicator will turn off and the alarm will NOT be set for the following day.

USING THE TORCH

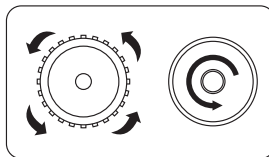


EMERGENCY SIREN & FLASHING LIGHT



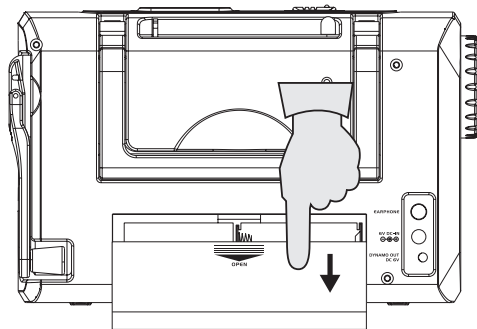
REPLACING THE TORCH LIGHT BULB

Unscrew the front cover. Remove the bulb by turning counter clockwise. Replace the light bulb with 3.6V/90mA.

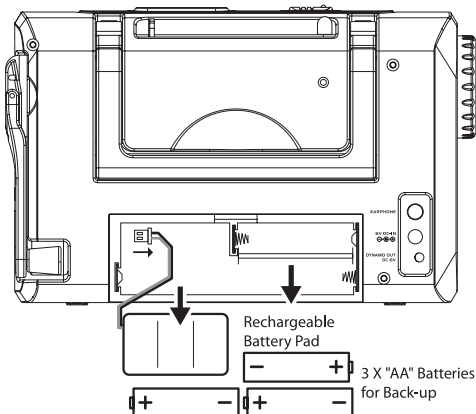


REPLACING THE RECHARGEABLE BATTERY

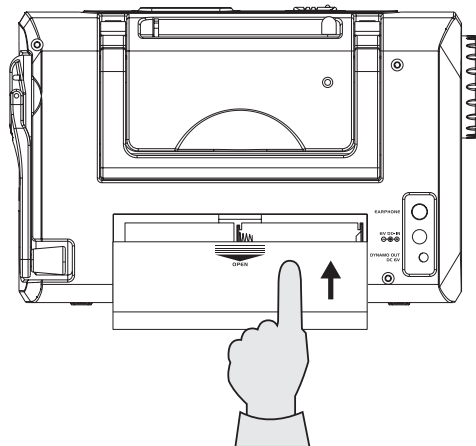
1



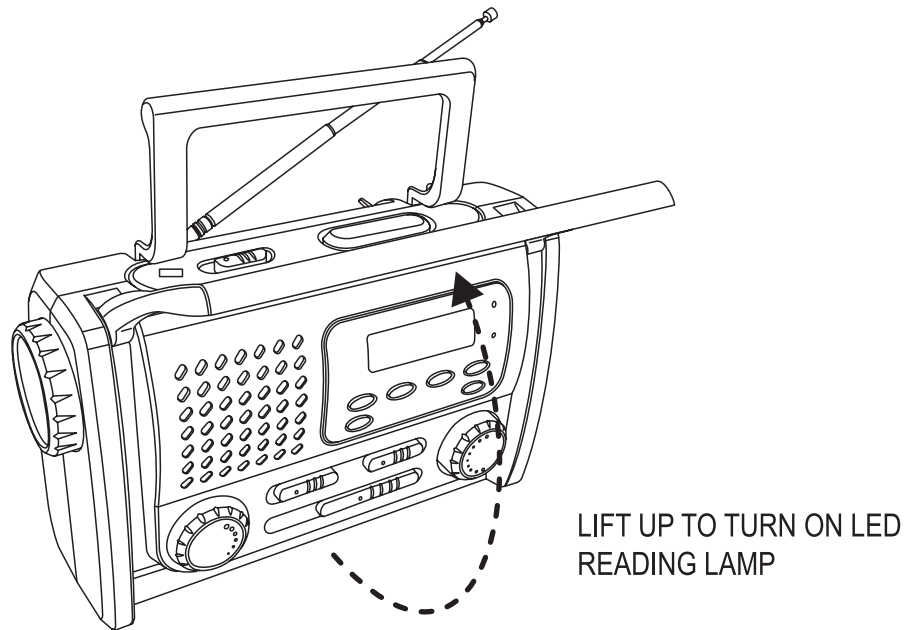
2



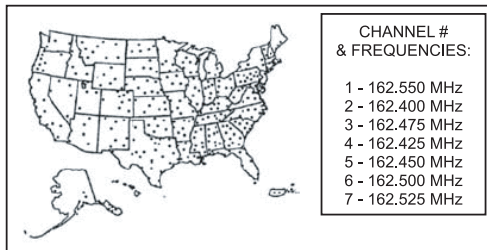
3



USING THE LED READING LIGHT



NOAA WEATHER BAND CHART



LOCATION FREQUENCY:

ALABAMA	ARIZONA
AANNISTON.....3	FLAGSTAFF.....2
AUBURN.....7	GILA COUNTY NORTH.....4
BIRMINGHAM.....6	GILA COUNTY SOUTH.....6
CULLMAN.....5	GRAND CANYON (Hopi Point).....3
DEMOPOLIS.....3	PHOENIX.....1
DOZIER.....1	PRESCOTT.....7
FLORENCE.....3	SHOW LOW.....2
FT.PAYNE.....6	TUCSON.....2
HUNTSVILLE.....2	WINDOW ROCK.....1
JACKSON.....6	YUMA.....1
LOUISVILLE.....3	
MOBILE.....1	ARKANSAS
MONTGOMERY.....2	FAYETTEVILLE.....3
TUSCALOOSA.....2	FORT SMITH.....1
WINFIELD.....7	GURDON.....3
	JONESBORO.....1
ALASKA	LITTLE ROCK.....1
ANCHORAGE.....1	MOUNTAIN VIEW.....2
CORDOVA.....2	RUSSELLVILLE.....7
CRAIG.....3	STAR CITY.....2
FAIRBANKS.....1	TEXARKANA.....1
HAINES.....2	
HOMER.....2	CALIFORNIA
JUNEAU.....1	BAKERFIELD (P).....1
KETCHIKAN.....2	COACHELLA (P).....2
KODIAK.....2	EIRELA.....2
NOME.....1	FRESNO.....2
SEWARD.....1	GRASS VALLEY.....2
SITKA.....1	LOS ANGELES.....1
SOLDOTNA.....3	MONTEREY.....1
VALDEZ.....1	MONTEREY MARINE.....5
WRANGELL.....2	PT. ARENA/UKIAH.....1
YAKUTAT.....2	REDDING (P).....1
	SACRAMENTO.....1

SAN DIEGO.....2
SAN FRANCISCO.....2
SANLUIS OBISPO.....1
SANTA ANA.....5
SANTA BARBARA MARINE.....3
SANTA BARBARA.....2

COLORADO
ALAMOSA (P).....3
BETHUNE.....7
COLORADO SPRINGS.....3
DENVER.....1
FORT COLLINS.....5
GLENWOOD SPRINGS.....6
GRAND JUNCTION.....1
GREELEY.....2
LA JUNTA.....6
MEAD/LONGMOUNT.....3
PUEBLO.....2
STERLING.....2

CONNECTICUT
HARTFORD.....3
MERIDEN.....2
NEW LONDON.....1

DELAWARE
LEWES.....1

FLORIDA
BELLE GLADE.....2
DAYTONA BEACH.....2
EAST POINT.....6
FORT MYERS.....3
FORT PIERCE.....4
GAINESVILLE.....3
INVERNESS.....2
JACKSONVILLE.....1
KEY WEST.....2
LIVE OAK.....5
MELBOURNE.....1
MIAMI.....1
OCALA.....7
ORLANDO.....3
PANAMA CITY.....1
PENSACOLA.....2
SALEM.....4
SEBRING.....6
TALLAHASSEE.....2
TAMPA.....1
WEST PALM BEACH.....3

GEORGIA
ATHENS.....2
ATLANTA.....1

AUGUSTA.....1
BAXLEY.....7
CHATSWORTH.....2
COLUMBUS.....2
MACON.....3
PELHAM.....1
SAVANNAH.....2
VALDOSTA.....6
WAYCROSS.....3
WAYNESBORO.....4

GUAM
GUAM (Nimitz Hill).....2

HAWAII
HAWAII (KULANI CONE).....1
HAWAII (SOUTH POINT).....1
KAUAI (KOKEE).....2
MAUI (MT. HALEAKALA).....2
OAHU (MT. KAALA).....1
OAHUKAI (HAWAII KAI).....2

IDAHO
BOISE.....1
LEWISTON (P).....1
MCCALL.....3
POCATELLO.....1
TWIN FALLS.....2

ILLINOIS
CHAMPAIGN.....1
CHICAGO.....1
MARION.....4
PEORIA.....1
ROCK ISLAND/MOLINE.....1
ROCKFORD.....3
SPRINGFIELD.....2

INDIANA
BLOOMINGTON.....5
EVANSVILLE.....1
FORT WAYNE.....1
INDIANAPOLIS.....1
LAKE CHARLES.....2
MONROE.....1
MORGAN CITY.....3
NEW ORLEANS.....1
SHREVEPORT.....2

IOWA
CEDAR RAPIDS.....3
DES MOINES.....1
DUBUQUE (P).....2
SIOUX CITY.....3
WATERLOO.....1

KANSAS
CHANUTE.....2
COLBY/GOODLAND.....2
CONCORDIA.....1
DODGE CITY.....3
ELLSWORTH.....2
LENORA.....4
TOPEKA.....3
TRIBUNE.....1
WICHITA.....1

KENTUCKY
ASHLAND.....1
BOWLING GREEN.....2
COVINGTON.....1
ELIZABETHTOWN.....1
HAZARD.....3
JACKSON.....4
LEXINGTON.....2
LOUISVILLE.....1
MADISON COUNTY CSEPP.....7
MAYFIELD.....3
PAINTSVILLE.....7
PIKEVILLE.....2
SOMERSET.....1

LOUISIANA
ALEXANDRIA.....3
BATON ROUGE.....2
BURAS.....3
LAFAYETTE.....1
LAKE CHARLES.....2
MONROE.....1
MORGAN CITY.....3
NEW ORLEANS.....1
SHREVEPORT.....2

MAINE
CARIBOU.....7
DRESDEN.....3
ELLSWORTH.....2
FALMOUTH.....1

MARYLAND
BALTIMORE.....2
HAGERSTOWN.....3
SALISBURY.....3

MASSACHUSETTS
BOSTON.....3
HYANNIS (Camp Edwards).....1
WORCESTER.....1

MICHIGAN
ALPENA.....1

DETROIT.....1
FLINT.....3
GAYLORD.....6
GRAND RAPIDS.....1
HESPERIA.....3
HOUGHTON.....2
MARQUETTE.....1
ONONDAGA.....2
OSHTIMO.....3
SAULT STE MARIE.....1
TRAVERSE CITY.....2

MINNESOTA
BEMIDJI.....4
DETROIT LAKES.....2
DULUTH.....1
INTERNATIONAL FALLS.....1
MANKATO.....2
MINNEAPOLIS/ST. PAUL.....1
ROCHESTER.....3
ROOSEVELT.....5
ST. CLOUD (P).....1
THIEF RIVER FALLS.....1
WILLMAR (P).....3

MISSISSIPPI
ACKERMAN.....3
BOONEVILLE.....1
BUDE.....1
COLUMBIA.....2
GULFPORT.....2
HATTIESBURG.....3
INVERNESS.....1
JACKSON.....2
KOSCIUSKO.....4
MERIDIAN.....1
OXFORD.....2
PARCHMAN.....6

MISSOURI
BOURBON.....7
CAMDENTON.....1
COLUMBIA.....2
HANNIBAL.....3
HERMITAGE.....5
JOPLIN.....4
KANSAS CITY.....1
SKESTON.....2
SPRINGFIELD.....2
ST. JOSEPH.....2
ST. LOUIS.....1
SUMMERSVILLE.....3

(CONTINUED ON) NEXT PAGE