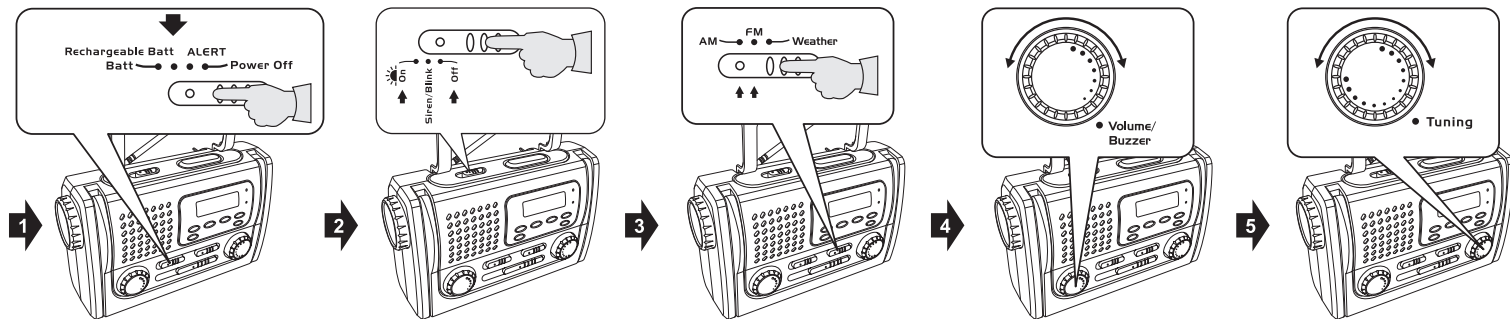


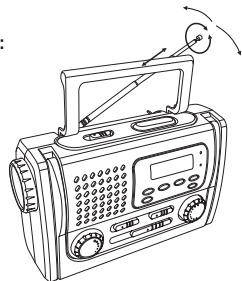
LISTENING TO THE RADIO



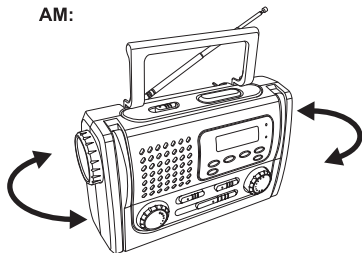
RECHARGEABLE BATT.=BUILT-IN RECHARGEABLE BATTERY
 BATT.=3 x "AA" ALKALINE BATTERIES (NOT INCLUDED)

TO IMPROVE RECEPTION

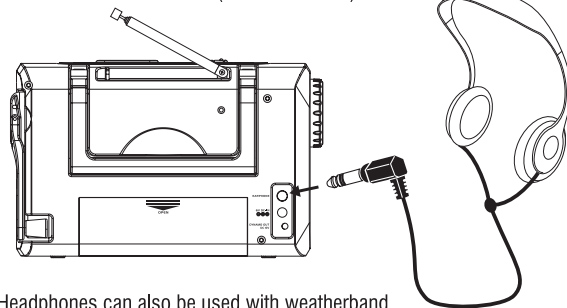
FM:



AM:

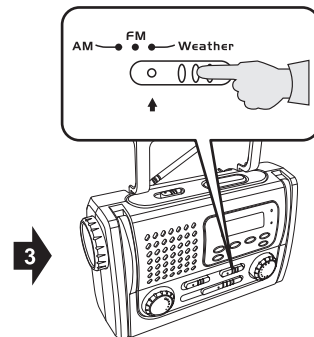
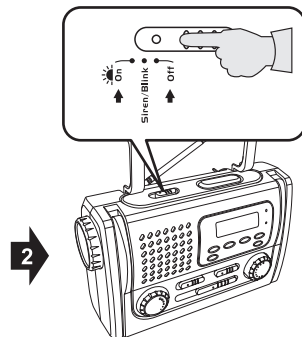
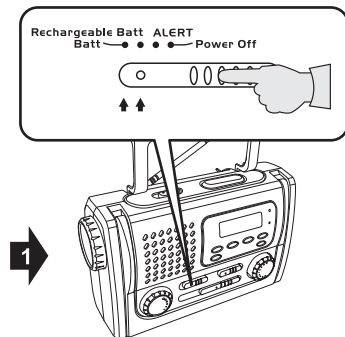


LISTENING WITH HEADPHONES (NOT INCLUDED)

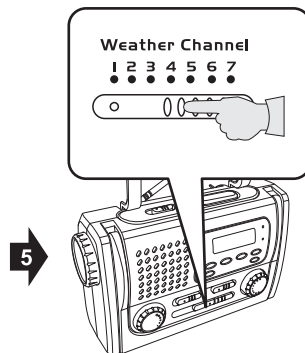
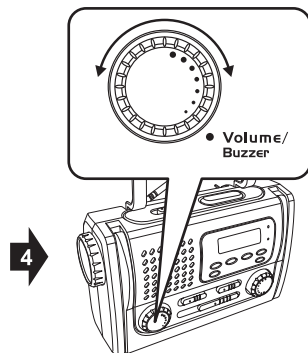


Note: Headphones can also be used with weatherband.

LISTENING TO THE WEATHER BAND RADIO



RECHARGEABLE BATT.=BUILT-IN RECHARGEABLE BATTERY
BATT.=3 x "AA" ALKALINE BATTERIES (NOT INCLUDED)

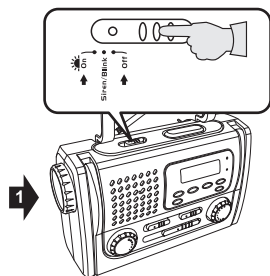


Note: Set the weather channel to the NOAA Weather Band chart at the end of this manual.

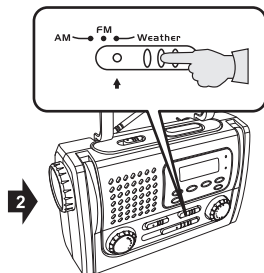
NOAA STORM ALERT

This Radio is equipped with a STORM ALERT which sounds when activated by the National Weather Service. This is activated in the event of pending severe storms or an emergency condition.

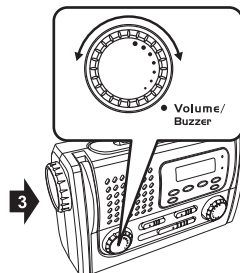
WEATHER RADIO - NOAA (National Oceanic and Atmospheric Administration) provides 24 hour broadcasts of the latest weather information directly from the National Weather Service Offices. In the Coastal and Great Lakes area additional detailed marine forecasts are given for those involved in marine activities. The official NOAA frequency guide to your area is shown on the NOAA weatherband chart at the end of this manual. Once the WEATHER CHANNEL Selector has been set to the correct channel no tuning is required.



#1 Set the Siren/Torch/Off switch (2) to off position

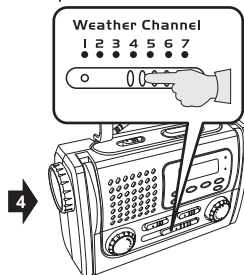


#2 Set Band Selector (19) to Weather Band

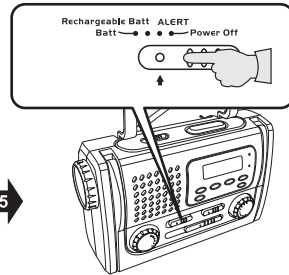


#3 Turn Volume control (15) to your listening level

Note: Set the weather channel to the NOAA weather band chart at the end of this manual.



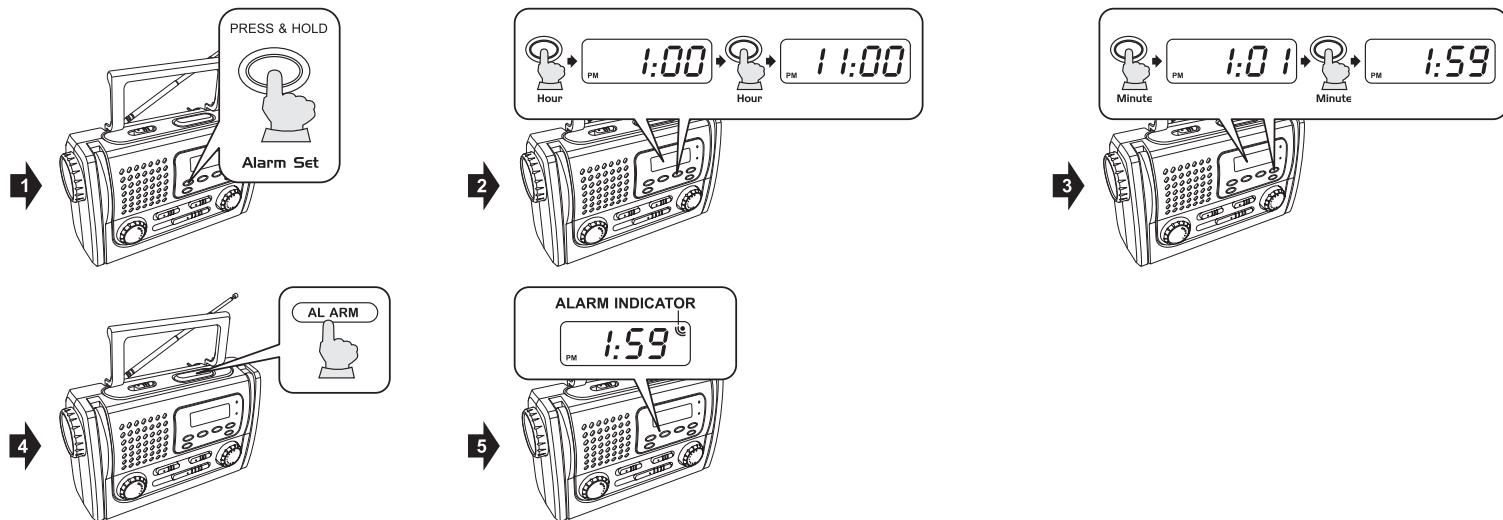
#4 Slide Weather channel selector (18) to the proper station for your area (see back of book)



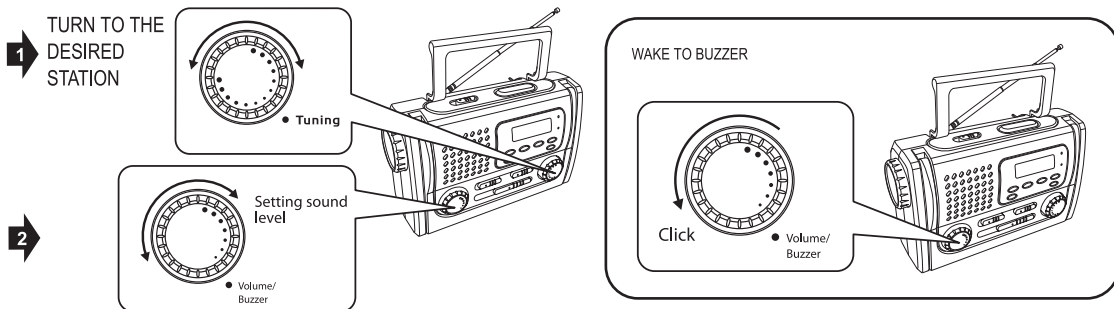
#5 Slide Power Source Switch (13) "Alert" setting

If a special warning signal is issued, the radio will beep and the alert indicator will flash. Slide the power source switch to the Rechargeable Batt. or the Batt. position to listen the broadcast.

SETTING THE ALARM



WAKE TO RADIO OR ALARM BUZZER



Note: When the alarm buzzer sounds, press the alarm button once, the BUZZER will turn off and the alarm will automatically set for the same time the following day. Press the alarm button two times, the alarm indicator will turn off and the alarm will NOT be set for the following day.