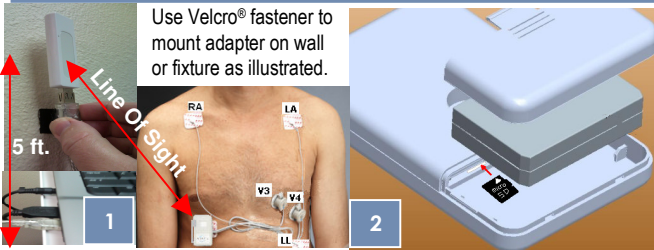


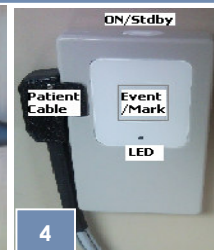
PREPARE THE AM (AMBULATORY MONITORING) SYSTEM FOR USE



Install the wireless antenna on the PC's USB extension cable. Mount the adapter (LED Out) 5-6' high to maintain line of sight with AM device.

Use thumb to slide battery door away from snap. Insert a blank 2Gb data card. Mate fresh battery with contacts and close battery door.

Mate depleted battery and charger contacts. Battery is charging when LED is on.



Prior to turning on the AM, check the battery charge level by observing the LED while pressing the Event/Mark button. **Inform patient that after power on, double flash indicates fault, single red or green 1/sec flashing LED is normal operation.**

LED Flash Patterns

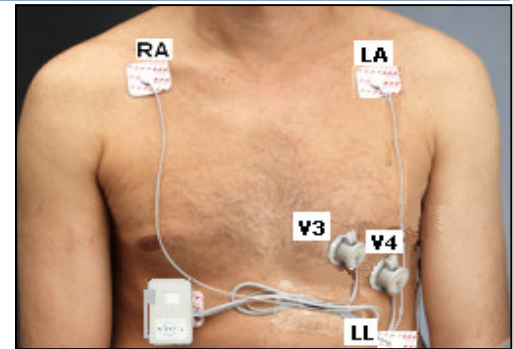
- ↑ 90-100% Battery Charge
- ↓ Below 90%
- After Power ON**
- ● Double Flash = Fault, No Storage Available
- ●

PREPARE THE PATIENT

- Strive for best possible contact between skin, electrodes/sensors
- Use a gauze pad to remove oils & perspiration for dry, pink skin
- If chest hair is thick or course, shave as necessary

APPLY SENSORS AND ELECTRODES

- RA – Right clavicle (snap electrode)
- LA – Left clavicle (snap electrode)
- LL – Left lower abdomen near hip (above belt line)
- V4 – AUDICOR sensor at Fifth intercostal space left of midclavicular line
- V3 – AUDICOR sensor midway between left sternal border and V4



Ambulatory Monitoring System Lead Placement

The AM unit should be placed based on patient comfort and lead wire length. Preview and resolve waveform quality issues before affixing the AM to the patient. **Train patient to reconnect leads, adapters and AM holster.**

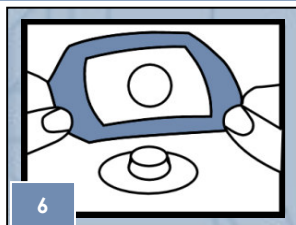
CAUTION: Remove patient cable, Audicor sensor, ECG electrodes and the AM device from the patient prior to resuscitation. **The AM/Holter device is not defibrillator protected.**



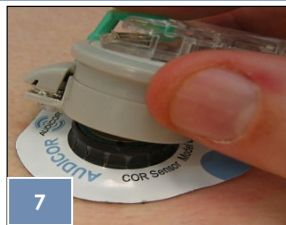
APPLICATION



Apply Sensor to the V3 & V4 position with moderate pressure and smooth the entire pad to ensure seal.



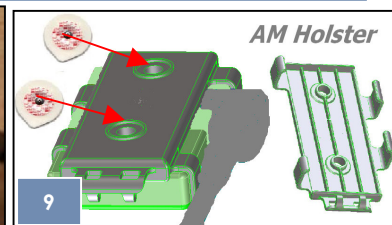
Apply Sensor over-patch on top of the Audicor Sensors. Apply pressure all around the edge to secure them.



With rocking motion, snap the sound connector on the correct sensor. Rotate adapter to test contact.

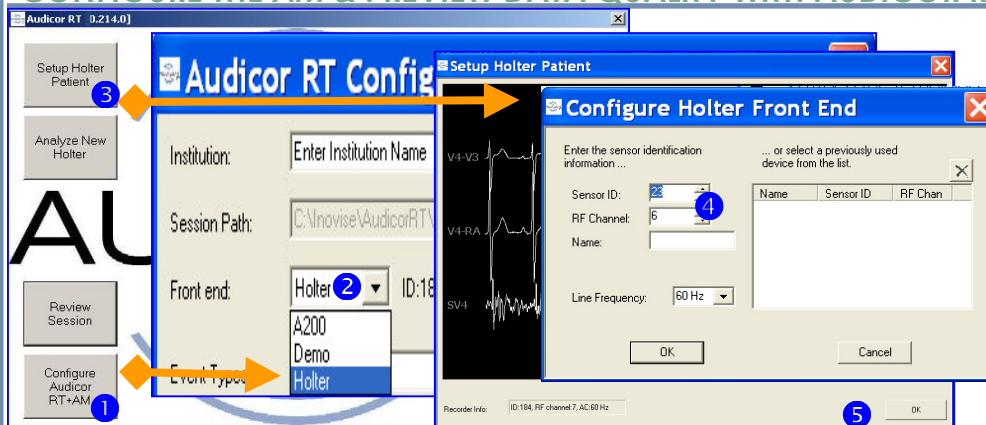


Attach the remaining leads to the correct ECG electrode positions as illustrated in lead placement photo.



Slide the AM recording device into the holster. Apply two ECG electrodes to the back of the holster, accounting for lead length apply assembly to the patient where comfortable.

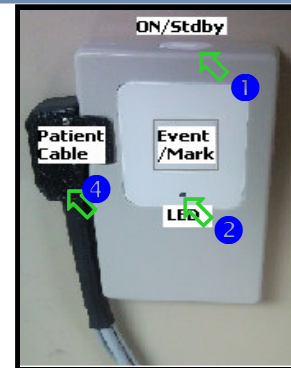
CONFIGURE THE AM & PREVIEW DATA QUALITY WITH AUDICOR RT+AM



- 1 Start the Audicor RT application. Select **Configure Audicor RT+AM**.
- 2 Ensure **Holter** is selected from **Front end** drop down box and click **OK**.
- 3 Click **Setup Holter Patient**.
- 4 Enter **RF Channel & ID** from AM label or select from previously used device from list. Select line frequency and click **OK** to preview waveform.
- 5 Enter **patient ID** and Click **Start Recording** to end Preview.

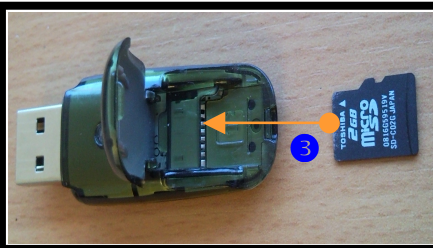
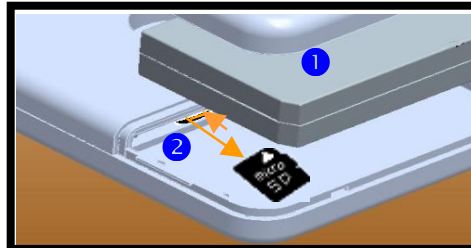
STARTING & STOPPING THE AM RECORDING SESSION WITHOUT AUDICOR RT

- 1 Press the **ON/STDBY** button located on the top of the Ambulatory Monitor to start a recording session.
- 2 Check to ensure the **LED** is now flashing once per second. (Double flash indicates full or no storage card installed)
- 3 Note the start time using the format. **YYYYMMDDhhmmss** (YYYY=year, MM=month, DD=day, hh=hour(24 hour time), mm=minute, ss=seconds). This information is needed when transferring data to Audicor RT.
- 4 To end data acquisition, press the ON/Stdby button until the LED stops flashing or remove the patient cable and briefly remove the battery cover until you see the LED stop flashing. Insert the battery and slide the battery cover closed.



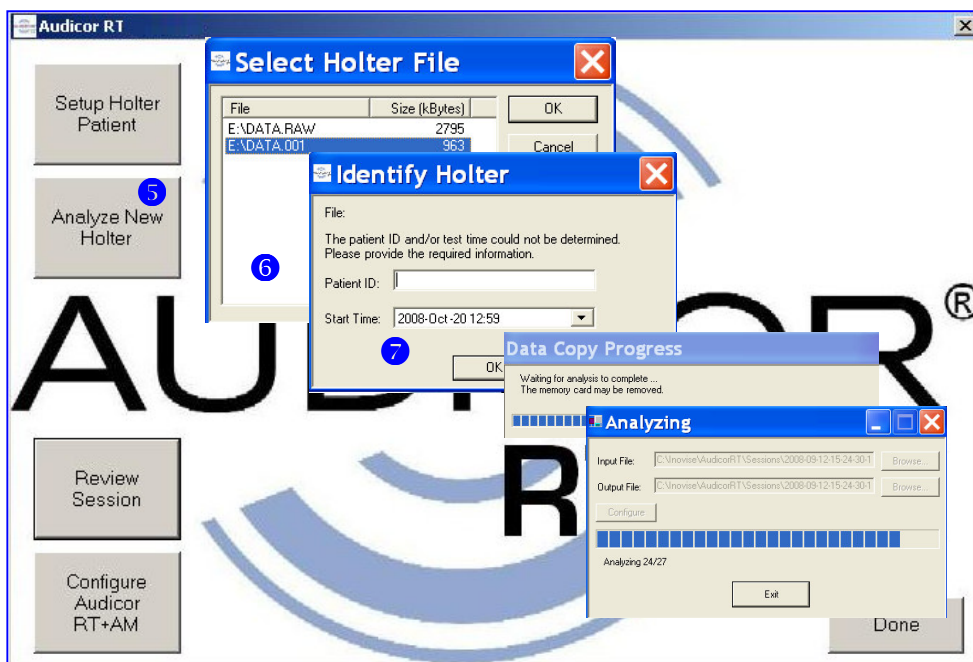
TRANSFERRING THE HOLTER STORAGE CARD TO THE PC

- 1 Disconnect the patient cable and use your thumb to slide the battery/memory card cover off and away from the snap. Lift the battery out of the case.
- 2 Gently push the 2Gb data card into the memory card socket (towards the snap) to release it and then pull with your thumbnail away from snap to disengage.
- 3 Insert the 2Gb data card into the USB card reader oriented with contacts down, see photo.
- 4 Insert the card reader into any available USB port on the Audicor RT PC. **NOTE:** Cancel Microsoft Window's "Auto Play" dialog if it appears after Inserting the USB card reader into the PC.



Note: In the event a USB port is unavailable, some PC's are equipped with Micro SD card slots that accept Micro SD card adapters. Follow the instructions that are provided with the 2Gb data card supplied with Audicor AM.

IMPORTING AND ANALYZING AMBULATORY MONITORING DATA



- 5 Click **Analyze New Holter** button to import data files from the 2Gb data card.
 - 6 If multiple files exist click to **highlight** the file you wish to analyze then click **OK**.
 - 7 If prompted to Identify the selected Holter file: Enter **Patient ID** and recording **Start Time** then click **OK**.
- NOTE:** Repeat steps 5-6 to analyze remaining files. Files not analyzed are not removed from the memory card and must be manually saved to the PC or deleted prior to the next use of the card.
- 8 After analysis has completed the "Review Procedure Window will open automatically. To manage and print Holter reports see Audicor RT Quick Reference Guide.
 - 9 To prevent the loss or corruption of valuable data, before removing the USB/data card adapter from the PC, use Microsoft "Safely Remove Hardware" feature.



CLEANING THE HOLTER SYSTEM

- 1 Wipe the Holter and the patient cable with a warm moist cloth that has been sprayed with a mild detergent and or disinfectant.
- 2 Do not immerse the patient cable or recording device in fluids. Do not use harsh chemicals to clean this system
- 3 Keep liquids away from connectors patient cable adapters and memory card cover



Audicor RT + AM is for investigational use only and not approved for managing patient care. Use for data collection only.



Authorized Representative for EC: Priory Analysts, The Atrium, Park Street West, Luton, LU1 3BE, United Kingdom



Inovise Medical, Inc. 8770 SW Nimbus Avenue, Suite D • Beaverton, OR 97008-7196
• USA • Toll Free (USA): 877.466.8473 • Telephone: 503.431.3800 • Fax: 503.431.3801 • www.Audicor.com • Email: info@Inovise.com

CUSTOMER SUPPORT
877.466.8473
OPTION 2

Rx only Page 2 of 2