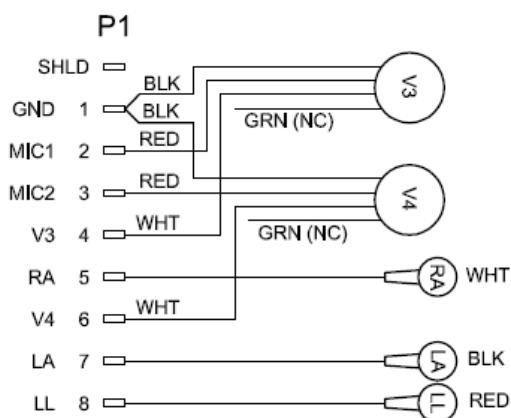


Audicor AM Patient Connection Information

Audicor AM Patient Cable Wiring Diagram

Audicor AM Device Connection

The device side connection is made using an 8-pin mini-USB-style connector that is imbedded in a plastic shell.



Patient Connections

V3 and V4 terminals connect to Inovise Audicor 2.0 Sensors (ECG electrodes with built-in heart sound microphone)

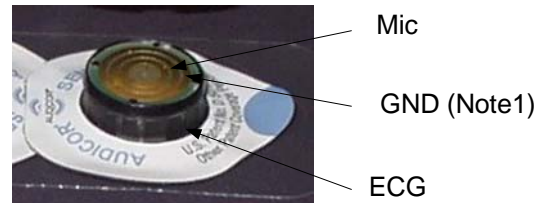
RA, LA, LL terminals connect to standard ECG electrodes.

For more detail refer to Inovise drawing p/n 20211



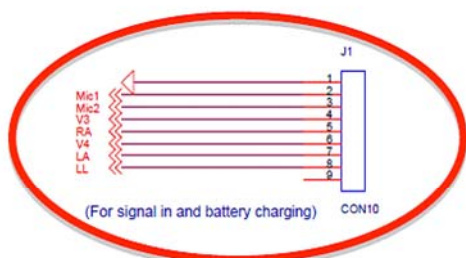
Inovise Audicor 2.0 Sensor

(ECG electrode with built-in heart sound microphone)

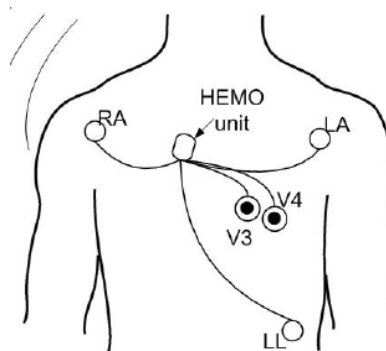


Note1: GND does not imply a earth ground connection. This pin would be better described as Mic-.

Audicor AM Patient Cable Connector



Note2: This is part of the Audicor AM PCB schematic. The "For signal in and battery charging" comment is incorrect. **This connection is NOT used for charging.** It is used only for connecting the patient cable shown above.



Electrode locations