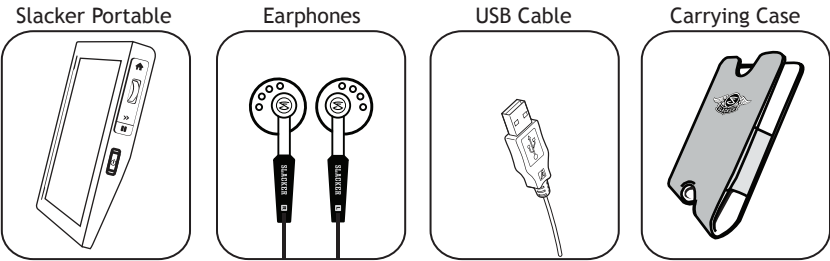


Welcome to Slacker

Thank you for choosing Slacker. The award-winning Slacker Personal Radio Service is now available to you wherever you are. Whether you choose the free service or premium radio, new music and old favorites will automatically be sent to your Slacker Portable.

Check out this Quick Start Guide to get familiar with your new player.

You'll find the included accessories located in the package underneath the Slacker Portable:



Part #: 41000001-001

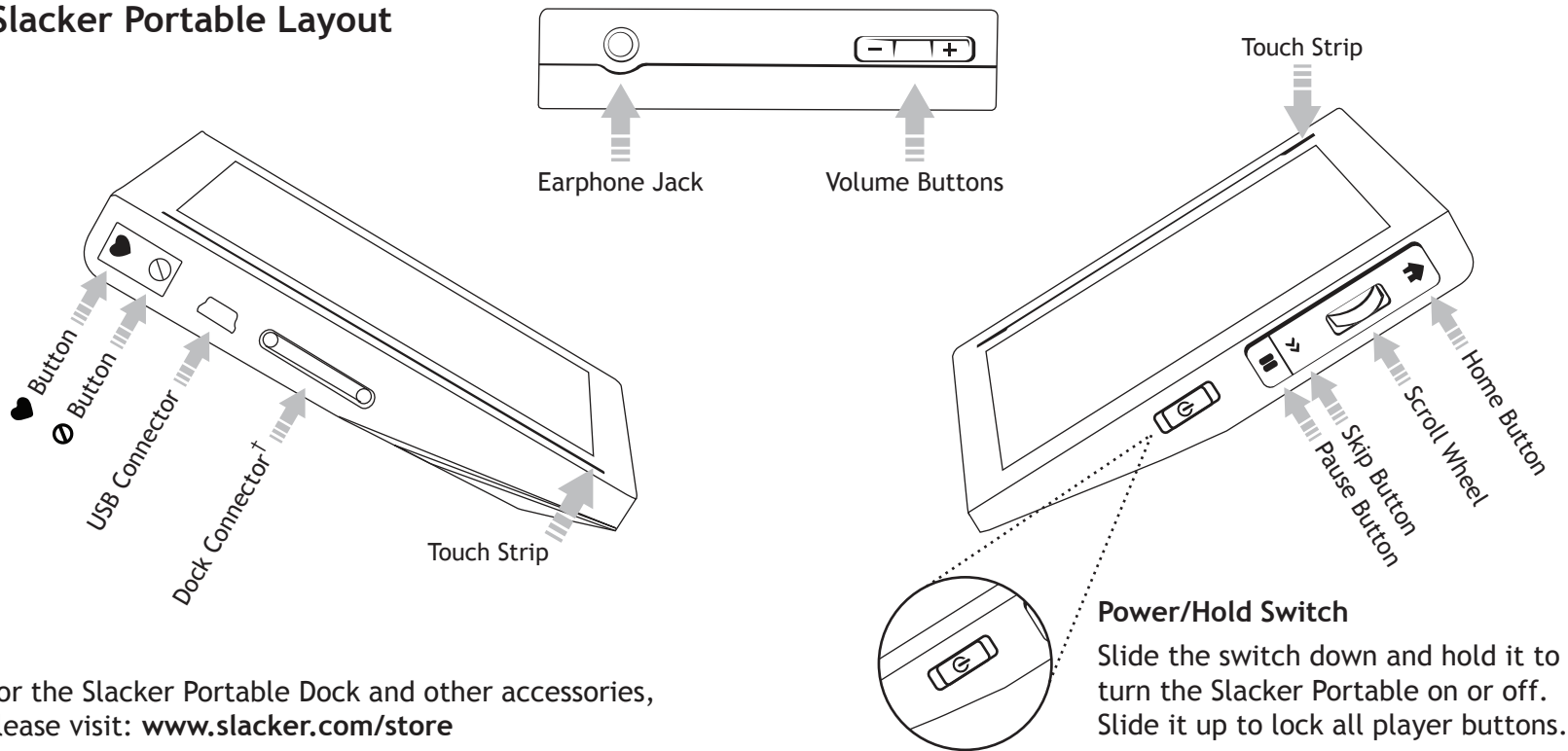
QUICK START GUIDE



Please read before using your
Slacker Portable

For the most recent version of this guide or the full manual
visit: www.slacker.com/install

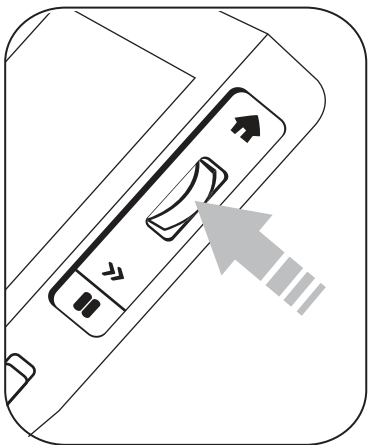
Slacker Portable Layout



†For the Slacker Portable Dock and other accessories,
please visit: www.slacker.com/store

1 Play a Station

Your Slacker Portable comes pre-loaded with radio stations. To play a station, use the scroll wheel to move to the Stations menu and then press the scroll wheel once.



Use the scroll button to highlight the desired station and then press the scroll wheel. Your station will begin to play. Press the Home button to go back.

- TIP: There are multiple views of the song currently playing on your Slacker Portable. To access the views, select Now Playing on the Main Menu and press the scroll wheel once for each view. Views include large album art, artist bios, album reviews, and a playlist of the songs played on the station.
- TIP: Skip to the next song by pressing the Skip button. You are allowed 6 skips per hour, per station using the free service. Sign up for Slacker Premium Radio for unlimited skips. For more details, visit www.slacker.com/premium
- TIP: You can scroll through lists and menus by sliding your finger over the Touch Strip and tapping it to select.

2

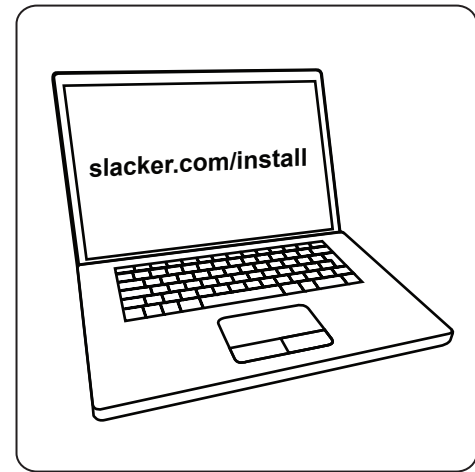
Install Slacker Desktop Radio

Go to www.slacker.com/install to download and install the required software.*

Once installed, you'll need to enter the Slacker Portable ID into your account so we can refresh your stations. To locate the ID on your Slacker Portable, go to the Main Menu and select Settings>About.

On the Desktop Radio, select Options>Account>Manage Account and sign in. Look for the Slacker Portable section, click Edit, enter your Portable ID, and then click Save.

*Mac® owners should use the Web Player at www.slacker.com instead of Desktop Radio to enter the Portable ID and to manage the Slacker Portable.



- **TIP:** Visit slacker.com/install to get the latest software and detailed product manual for your new Slacker Portable.

3

Refresh Your Stations via USB or Wi-Fi®

Your Slacker Portable occasionally needs to refresh your stations to ensure you have the latest music. There are two ways to refresh your stations:

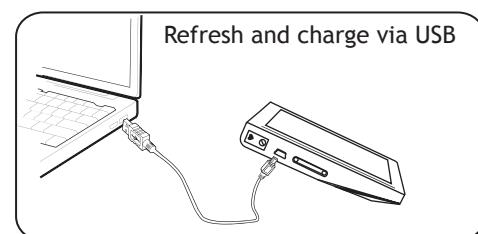
After installing the Desktop Radio, connect your Slacker Portable to your PC with the USB cable. This will enable you to refresh your stations and charge your Portable at the same time. This is also how you will be able to transfer songs from the Desktop Radio library to your Slacker Portable.**

OR

You can refresh your stations anywhere using built-in Wi-Fi. Simply press Connect on the Main Menu and follow the on-screen instructions.***

**Library content transfer is not supported on a Mac. Use Wi-Fi connection to refresh stations.

***Requires access to a Wi-Fi network.

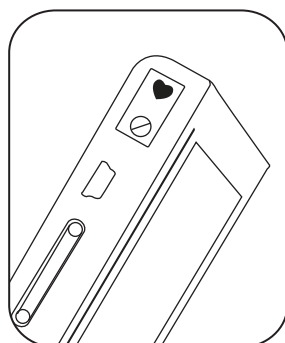


4

Personalize your Slacker Portable

It is easy to personalize your Slacker Portable:

1. Using the Desktop Radio or Web Player, create custom stations using the Create Station tool. Then send your custom stations to your Slacker Portable by clicking the Portable button.
2. Add your own personal music files (such as MP3s) saved on your PC to your Slacker Portable using the Desktop Radio.††
3. Use the ♥ and ⊘ buttons to rate “favorite” songs and ban unwanted songs. As you do, your stations will play more of the music you love. Your new ratings will be reflected in the Web Player and Desktop Radio.



††Not supported on a Mac.

5

Support

If you need help with the Slacker service or Slacker Portable, please contact Slacker customer support at support@slacker.com

Additional Help

- Press and hold the scroll wheel to display menus with additional features. You can exit without making a selection by pressing the Home button.
- To save battery life, your screen will time out if you don't press any buttons. To turn the screen back on, press the Home button.
- For additional information, open Desktop Radio, and go to Options>Help>Help Index. Use the Search tab to quickly locate answers to your questions. You may also visit www.slacker.com/support to view additional resources such as FAQs.

Slacker Portable Player Battery Safety

The Slacker Portable Player contains a removable lithium-ion battery. Lithium cells and batteries may get hot, explode or ignite and cause serious injury if exposed to abuse conditions. At a minimum, be sure to follow the safety warnings listed below:

- Do not dispose of either the Slacker Portable Player or the lithium-ion battery in a fire. Dispose of the lithium-ion battery in accordance with the laws and regulations in your area governing disposal of such cell types.
- Do not: disassemble, crush, or puncture the lithium-ion battery; heat the lithium-ion battery above 60°C (140°F); allow metal objects to contact the battery terminals; or subject the battery to strong impacts or shocks.
- Do not expose battery to water or salt water, or allow the battery to get wet. In the event the battery leaks and the fluid gets into one's eye, do not rub the eye. Rinse well with water and immediately seek medical care. If left untreated, the battery fluid could cause damage to the eye.

Immediately discontinue use of the battery if, while using or storing the battery, the battery emits an unusual smell, feels hot, changes color or shape, or appears abnormal in any other way. Contact Slacker if any of these problems are observed. Use only the lithium-ion battery that Slacker specifies for use with your particular Slacker Portable Player model. Using any other lithium-ion battery might invalidate any warranty provided with the device and might present a risk of fire or explosion.

Part #: 41000010-001



**IMPORTANT TIPS & SAFETY INFO
ABOUT YOUR SLACKER PORTABLE**

PLEASE READ

Federal Communications Commission (FCC) Statement

15.21

You are cautioned that changes or modifications not expressly approved by the part responsible for compliance could void the user's authority to operate the equipment.

15.105(b)

This equipment has been tested and found to comply with the limits for a Class B digital device, pursuant to part 15 of the FCC rules. These limits are designed to provide reasonable protection against harmful interference in a residential installation. This equipment generates, uses and can radiate radio frequency energy and, if not installed and used in accordance with the instructions, may cause harmful interference to radio communications. However, there is no guarantee that interference will not occur in a particular installation. If this equipment does cause harmful interference to radio or television reception, which can be determined by turning the equipment off and on, the user is encouraged to try to correct the interference by one or more of the following measures:

- Reorient or relocate the receiving antenna.
- Increase the separation between the equipment and receiver.
- Connect the equipment into an outlet on a circuit different from that to which the receiver is connected.
- Consult the dealer or an experienced radio/TV technician for help.

Operation is subject to the following two conditions:

- 1) this device may not cause interference and
- 2) this device must accept any interference, including interference that may cause undesired operation of the device.

FCC RF Radiation Exposure Statement:

This equipment complies with FCC radiation exposure limits set forth for an uncontrolled environment. End users must follow the specific operating instructions for satisfying RF exposure compliance. This transmitter must not be co-located or operating in conjunction with any other antenna or transmitter.

The FCC label and information is placed inside the battery door of the Slacker Portable. The battery door must be removed, along with the battery to locate this label.

Refreshing Your Slacker Portable Using USB

The Slacker Portable is unique in that it connects to your PC over USB much like other devices; however it then uses your Internet connection to retrieve the latest content for you so that you don't have to download the music yourself.

If you experience any issues refreshing the stations on your Slacker Portable using the USB connection on your PC, please check the following:

1) Make sure that you have installed the Slacker Software Player, this can be found at **www.slacker.com/install**. If you have successfully installed the Slacker Software Player you should see a Slacker Icon in your system tray.



2) If you have the Slacker Software Player installed, try uninstalling and reinstalling the application before attempting another refresh over USB.

a. From your "Start" button, select "All Programs", locate the Slacker folder and select "Uninstall". Once complete, restart your PC before connecting the Slacker Portable directly to the USB port of your computer.

Enabling the Touch Strip on your Slacker Portable

The Slacker Portable features an innovative Touch Strip for quick navigation and easy access to your music. This option is disabled by default, but you can easily enable this feature to take advantage of the benefits the Touch Strip may provide to you.

1) It is easy to enable or disable the Touch Strip on the Slacker Portable:

a. From the main menu of the Slacker Portable, choose "Settings", then "Display", then "Touch Strip" and choose "On" or "Off" to enable or disable the Touch Strip.

2) Once the Touch Strip is enabled you can tap the area next to the album art or button that you wish to select. This area is indicated by a white stripe on the face of the player, to the left of the display.

a. Be sure to "tap" these areas to select the item, try not to "slide" your finger up and down, this can offer you one click access to the selection you choose.

For more info on your Slacker Portable visit www.slacker.com/support