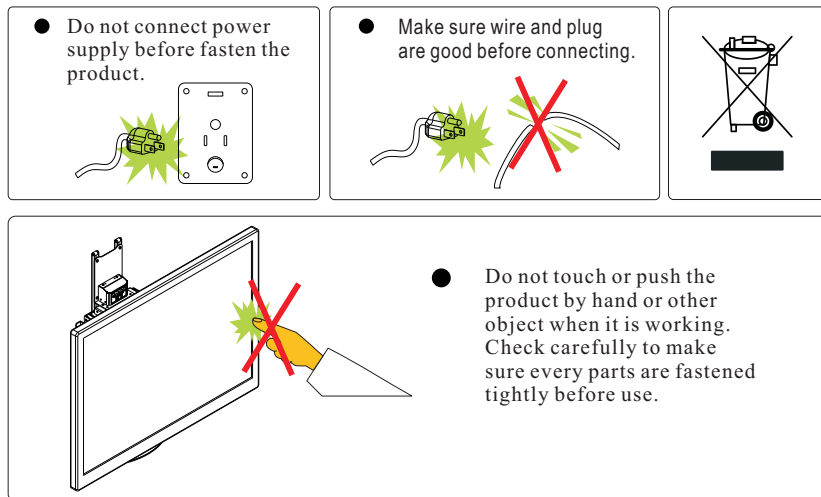


⚠ Warning:

This wall mount is intended for use only with the maximum weight indicated. Use with heavier than the maximum weight indicated may result in instability causing possible injury.

6. Caution



7. Maintenance

Often to check the product, ensure the safety. Do not use corrosive agent or alcohol or chemical cloth to clean.

8. Reliability

Temperature and humidity condition: $-20^{\circ}\text{C} \sim +50^{\circ}\text{C}$, 80%HR

⚠ Warning:

1. Do not disassemble the product to repair by yourself.

Warranty for electricity is void after disassembled!

2. After you installed the apparatus, please check the expansion screws and all fastening devices every 3 months, and please do not use it and contact the local dealer if gets loose, rusty or lost.

[Http://www.xyz888.com.cn](http://www.xyz888.com.cn)

Mail : mail@xyz888.com.cn

USER'S GUIDE

Model: ZX-C33A TV Stand

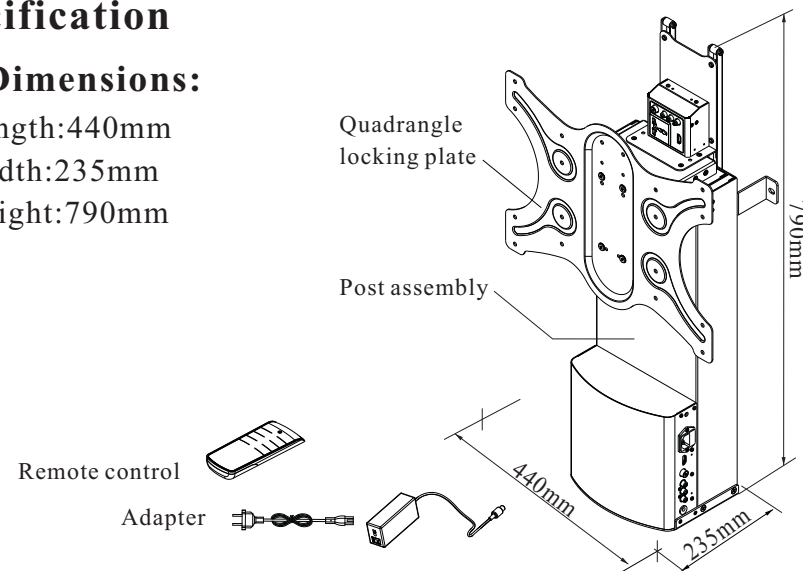
1. Specification

1-1 Dimensions:

Length: 440mm

Width: 235mm

Height: 790mm



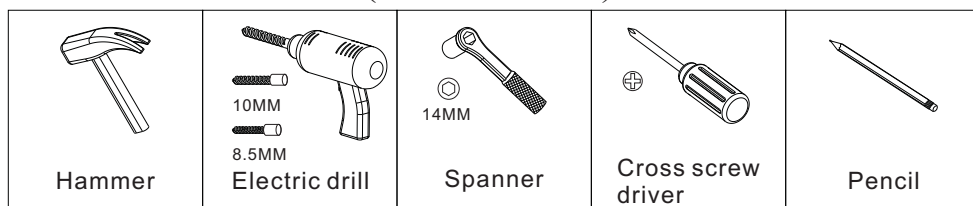
1-2 Installation Parts

①	2pcs	②	2pcs	③	2pcs	④	2pcs
	M8*25mm Cross Pan head screw		M8 Nut		Ø10*47mm Nylon plastic plug		M6*50mm Hexagon flange wood screw
⑤	4pcs	⑥	4pcs	⑦	2pcs	⑧	1pcs
	Washer		M5*12mm Cross Pan head screw		M6*10mm Cross Flat head screw		Remote control

Notice:

Check all the parts as shown on the manual included. If parts are missed or damaged, do not use it and please return to your local distributor.

1-3 Installation Tool(Not included) :



2. Electric Specification

2.1 Input Voltage/Current/Frequency:

100-240V/<1.2A/50~60Hz

2.2 Output Current:DC24V,3A

2.3 Motor

Item	Rated Voltage	Current (NoLoad)	Current (Rated Load)	Operating Temperature
Motor	DC24V	≤0.7A	≤1.8A	-20℃~50℃



Warning:

Correct installation is extremely essential, and falls outside the scope of responsibility of manufacturer. The user must pay attention to the weight of TV and this product, and only solid wall can support the weight.

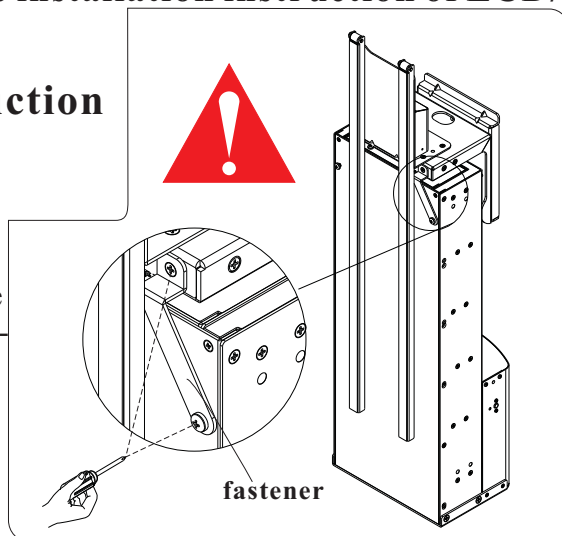
Please comply with the installation instruction of LCD/PDP to install them.

3. Installation Instruction



Warning:

Firstly, you must screw off the two screws on the fastener, and keep the fastener by yourself. Then screw up the two screws to the original place. (see right diagram)



4-2. Operating method

A: Aim the remote control at TV to operate. The effective distance is within 10m.

B: This remote control matches one 23A12V battery. If the battery ran out, please open the battery cover to exchange new one.

C: When user press any function key of remote control, the TV bracket with TV will move to the corresponding place, and will stop when you loosen the key.

4-3. Notice

If any remote control of our product was lost or damaged, you can buy a new remote control with the same frequency which produced by our company and do following operation:

A: Memory cleaning: pressing coding key about 10 seconds, the memory will be cleaned after the indicator closed. (The memory is the coding memory of the previous remote control)

B: Use new remote control: pressing any key of remote control and the coding key 1-2 seconds at the same time, loosening remote control firstly, then loosen the coding key, finally, you can operate the product with new remote control. (Coding key, Indicator, Please see diagram 7)

Warning:

Changes or modifications not expressly approved by the party responsible for compliance could void the user's authority to operate the equipment.

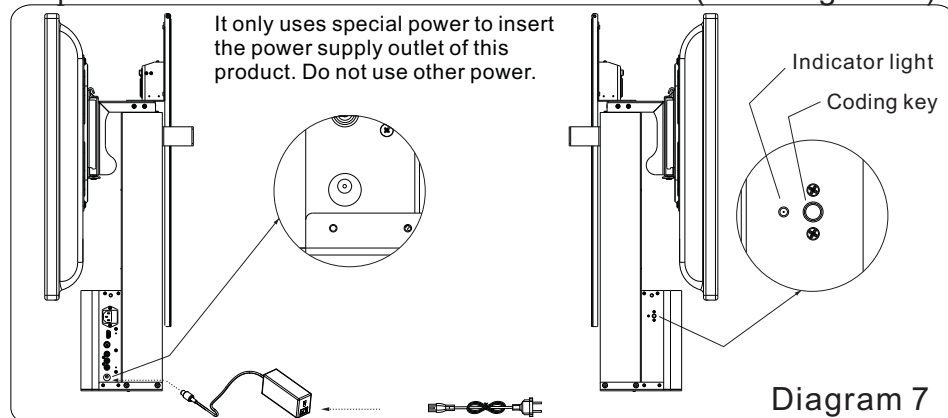
NOTE: This equipment has been tested and found to comply with the limits for a Class B digital device, pursuant to Part 15 of the FCC Rules. These limits are designed to provide reasonable protection against harmful interference in a residential installation. This equipment generates, uses and can radiate radio frequency energy and, if not installed and used in accordance with the instructions, may cause harmful interference will not occur in a particular installation. If this equipment does cause harmful interference to radio or television reception, which can be determined by turning the interference by one or more of the following measures:

- Reorient or relocate the receiving antenna.
- increase the separation between the equipment and receiver.
- Connect the equipment into an outlet on a circuit different from that to which the receiver is connected.
- Consult the dealer or an experienced radio/TV technician for help.

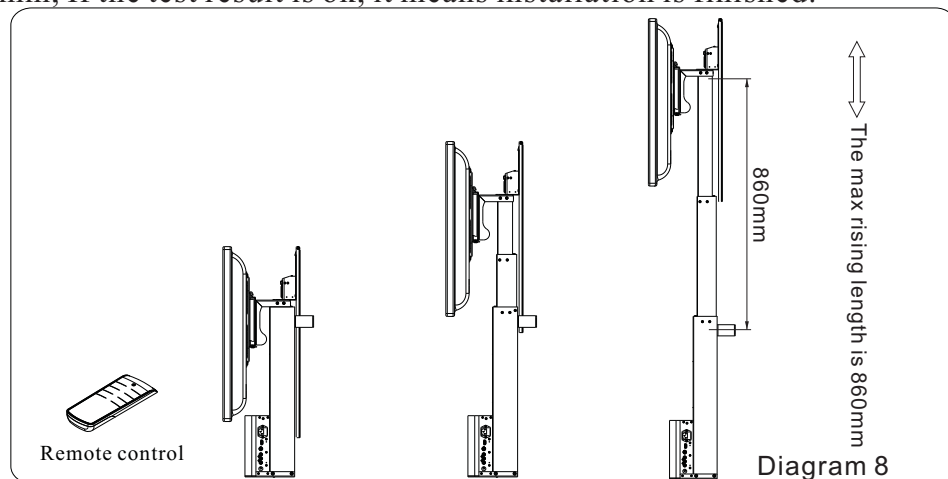
5. Technical Parameters:

Item Model	TV Size (inch)	Product Dimension (mm)	Max Installation (mm)	Min Installation (mm)	Loading (kg)	Extending Length (mm)	Net Weight (kg)
ZX-C33A	32	440*235*790	400*300	200*100	50	860	28.5±0.5

3-7. After ensure that the above step is ok, please insert the power of this product. (see diagram 7)



3-8. Using special remote control that attached to test this product. This lift mount is composed of three section, the max rising length is 860 mm, If the test result is ok, it means installation is finished.



4. Remote control(see diagram 9)

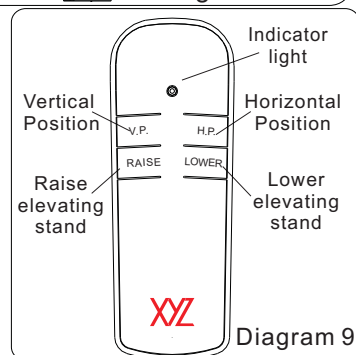
4-1.Key function

V.P. : one push to extend elevating stand to the top.

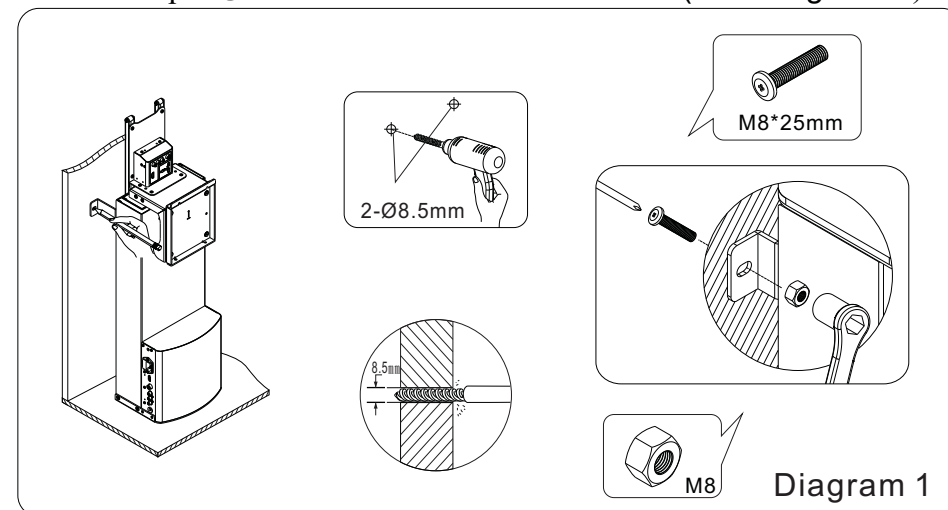
H.P.: one push to back elevating stand to the bottom.

Raise: hold on to raise elevating stand.

Lower: hold on to lower elevating stand.

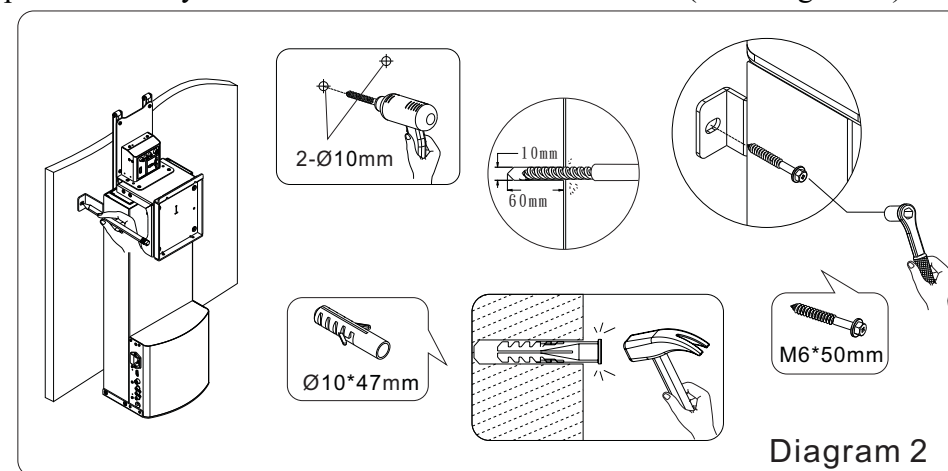


3-1. For using in cabinet, make a mark on the rear of cabinet according to the hole position of support bracket. Drill the hole on the mark, $\varnothing 8.5\text{mm}$. Fasten stand against cabinet by 2pcs①M8*25mm pan head screw and 2pcs②M8 Nut. (see diagram 1)

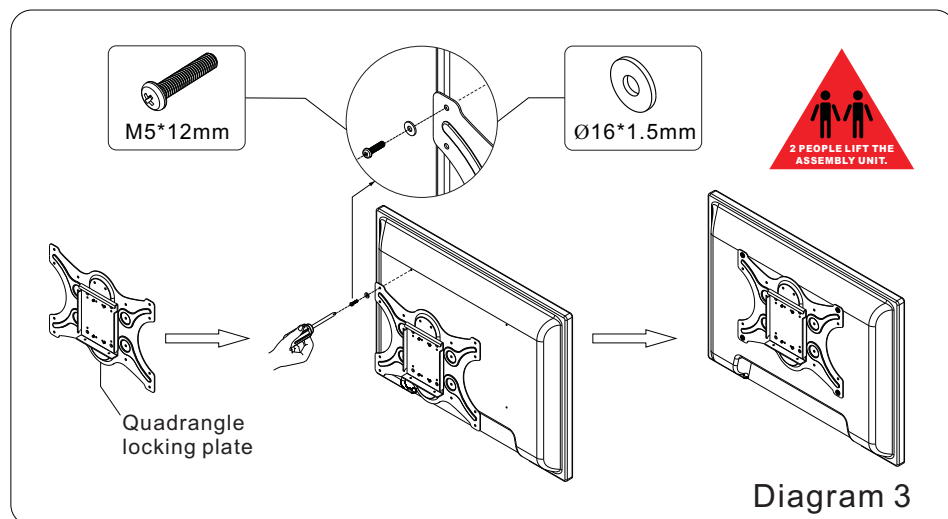


3-2. For installing against the wall, ensure there are not any reinforced steel bar or iron block in the wall and the wall is not soft, make a mark on the wall according to the hole position of support bracket.

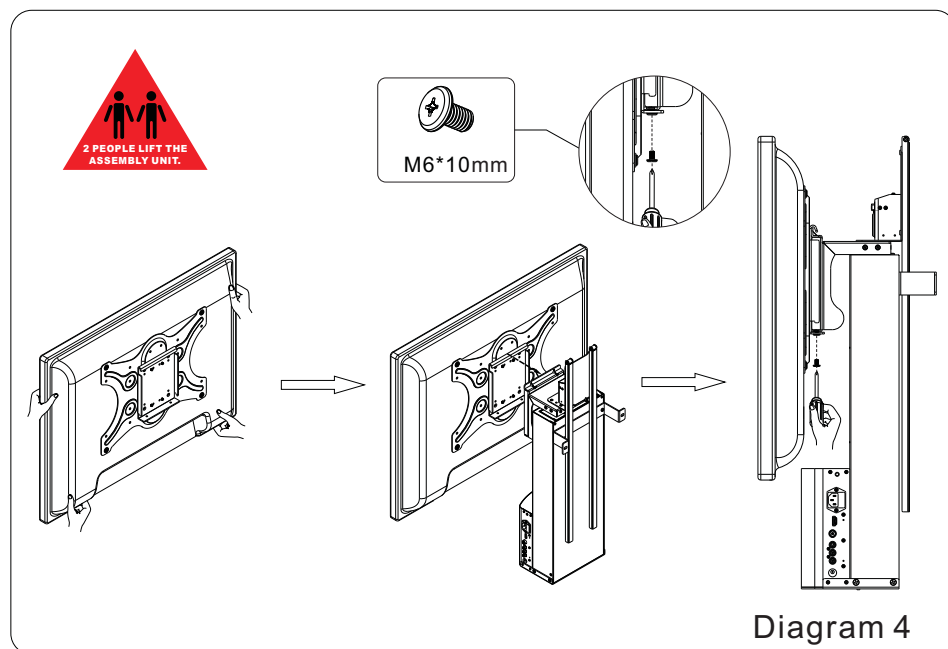
Drill the hole on the mark depth 50~60mm, $\varnothing 10\text{mm}$ by electric drill. Take out 2pcs③ $\varnothing 10*47\text{mm}$ Nylon plastic plug and insert them into the holes, and fasten the④M6*50 mm Hexagon flange wood screw through the holes of support bracket into the plug by Spanner, ensure that the post assembly can not be moved. (See diagram 2)



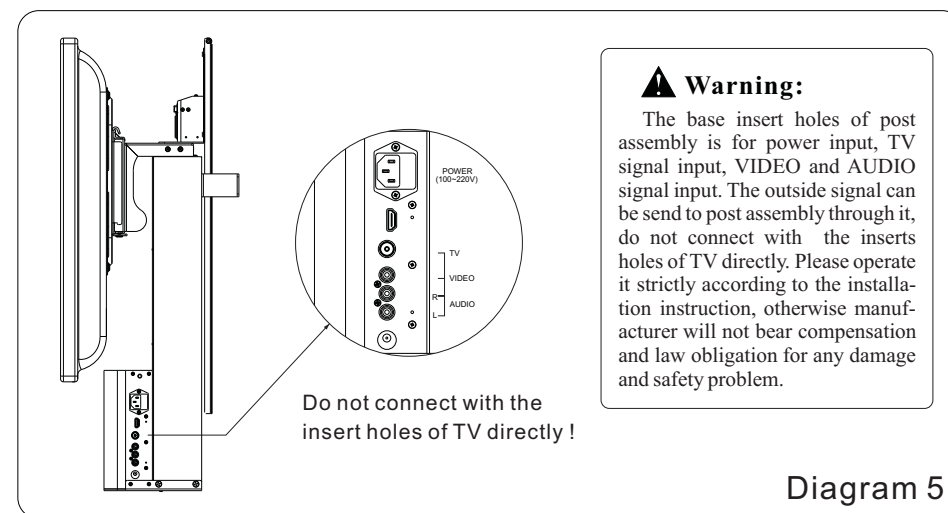
3-3. Fasten the TV and Quadrangle locking plate by 4pcs⑥M5*12 mm Pan head screw and 4pcs ⑤ washer. Make sure the installation is fixedness. (See diagram 3)



3-4. Hang Quadrangle (with TV) to the hooking gap of the mounting panel, Then tighten the lower end of Quadrangle by 2pcs⑦M6*10mm Flat head screws. (See diagram 4)



3-5. After you make sure the installation is correct and fixedness, please connect the terminal of Power, TV input signal, VIDEO and AUDIO input signal with base insert holes of post assembly. (Please comply with the installation instruction to connect strictly) (See diagram 5)



3-6. After finish and check above installation step, please connect terminal of power, TV signal, VEDIO and AUDIO signal of TV with top insert holes of post assembly. (Please comply with the installation instruction to connect strictly) (see diagram6)

