

3-5.Maintenance

Do not use corrosive agent or alcohol or chemical cloth to clean!

4. Temperature and humidity condition :
-20℃ ~ +50℃ , 80%HR



Warning:

1.Do not disassemble the product to repair by yourself .

Warranty for electricity is void after disassembled!

2.After you installed the apparatus,please check the expansion screws and all fastening devices every 3months, and please do not use it and contact the local dealer if it gets loose,rusty or lost.

This device complies with part 15 of the FCC Rules.

Operation is subject to the following two conditions: (1)this device may not cause harmful interference,and (2) this device must accept any interference received,including interference that may cause undesired operation.

[Http://www.xyz888.com.cn](http://www.xyz888.com.cn)

Mail : mail@xyz888.com.cn

USER' GUIDE

Model: ZX-A04A

1.Specification

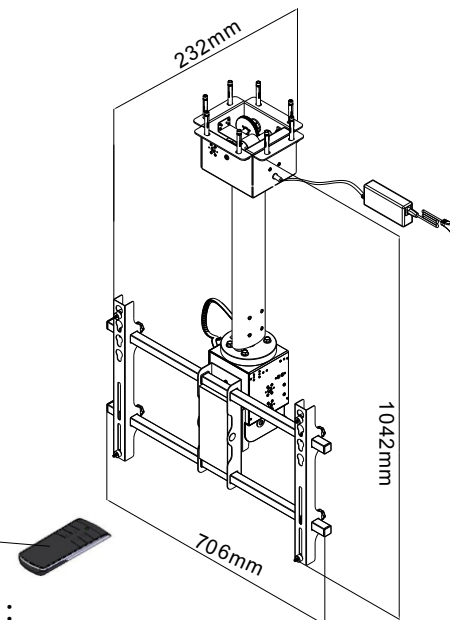
1-1.Dimensions

Length: 706 mm

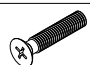

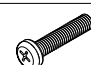


Width: 232 mm

Height: 1042 mm

Remote Sensor

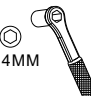
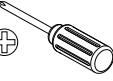





1-2. Installation Parts :

①	2pcs	②	2pcs	③	2pcs	④	2pcs	⑤	2pcs
									
Sink head screw M5*25/M6*30/M8*35 (mm)		Tab M5/M6/M8(mm)		Round head screw M5*23/M6*25/M8*30 (mm)		Washer ø16*6.2*T1.5/ ø16*8.4*T1.6(mm)		Pad M5/M6/M8(mm)	

⑥	8pcs	⑦	5pcs	⑧	1pcs
					
M8*70mm Expansion screw		M6*18mm Round head screw		Remote sensor	

1-3.Assembly tool(Not included):

				
14MM Wrench	Cross screwdriver	11MM Pecussion borer	Hammer	Pencil

2. Electric Specification

2-1. Input Voltage/Current/Frequency:

100-240VAC, < 1.2A, 50/60Hz

Output Current: DC24V ,3A

2-2. Motor

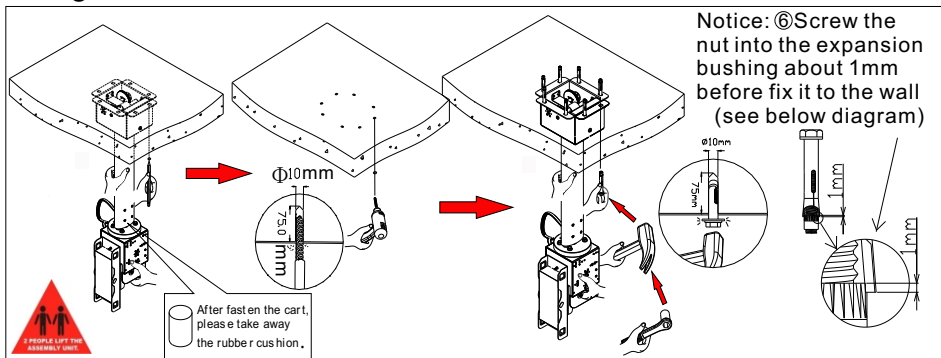
Item		Rated Voltage	Current (No load)	Current (Rated load)	Operation temperature
Motor	DN3435-3825E	DC24V	≤ 0.7A	≤ 1.8A	-20℃~50℃
	DN3435-3046E	DC24V	≤ 0.5A	≤ 1.5A	-20℃~50℃
	PR545AG-16190-RB35C-1000	DC24V	≤ 0.3A	≤ 0.5A	-20℃~50℃

Correct installation is extremely essential and falls outside the scope of responsibility of manufacturer, The user must pay attention to the weight of TV and TV mount, and only solid wall can support the weight. Please comply with the installation instruction of LCD/PDP to install them.

3. Installation Instruction

3-1. Installation method:

1. Make the mark at the place of ceiling that you want to mount the TV. Use percussion borer to drill 8 holes on the mark, at $\Phi 10\text{mm}$ and 70 depth. Take out 8 pcs ⑥ expansion screws from the fitting bag, insert them through the holes of cart into the hole of ceiling by hammer and fasten them by wrench. (see the diagram) Note: After fasten the cart, connect power, press "lower" key on the remote sensor to extend the cart and take away silicon rubber cushion. Do not press "raise" key before take away the silicon rubber, or the inside parts will be damaged.



III. Caution:

If any remote control of our product was lost or damaged, you can buy a new remote control with the same frequency which produce by our company and do following operation:

1. Memory cleaning: press coding key about 10 seconds, the memory will be cleaned after the indicator closed. (The memory is the coding memory of the previous remote control).
2. Use new remote control: press any key of remote control and the coding key 1-2 seconds at the same time, loosen remote control firstly, then loosen the coding key, finally, you can operate the product with new remote control. (Coding key, Indicator, please see diagram).

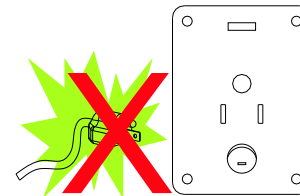
3-3. Technical Parameters:

Explain	TV size (inch)	Max installation (mm)	Min installation size (mm)	Load (kg)	Extended length (mm)	L/R angle (°)	Pitch angle (°)	MET weight (kg)
Parameter	25"~34"	600*400	200*200	40	0~350	±35	0~90	21.6±0.5

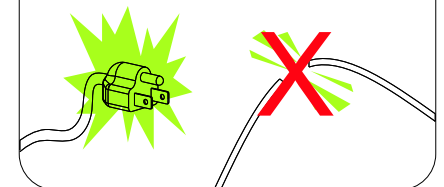
Warning: This ceiling mount's load-bearing weight must be at the range of the indicated max load-bearing weight. Use with heavier than the maximum weights indicated may result in instability causing possible injury!

3-4. NOTICE:

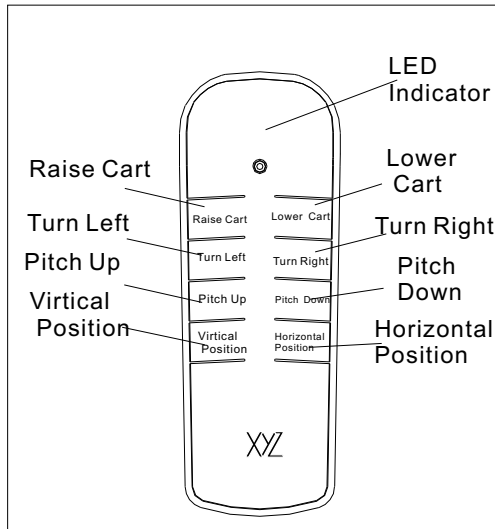
- Do not connect before fasten the product.



- Make sure wire and plug are good before connecting.



B. Remote sensor:



I. Key function

- 1.Raise:hold on to raise cart ◦
- 2.Lower:hold on to lower cart ◦
- 3.Left:hold on to turn TV left ◦
- 4.Right:hold on to turn TV right ◦
- 5.UP:hold on to pitch TV up ◦
- 6.Down:hold on to pitch TV down ◦

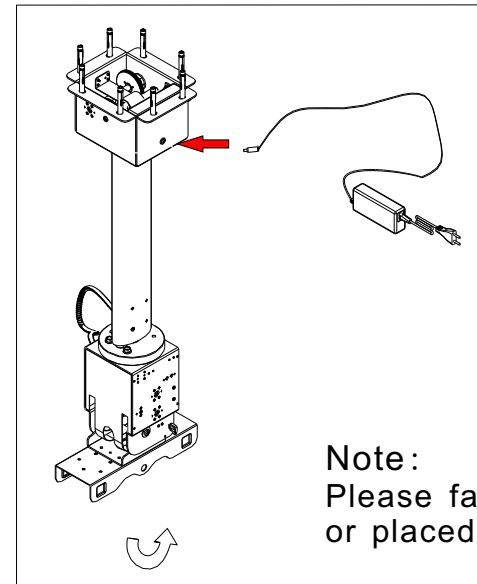
7.V.p.:one push to extend cart to the programmed operating position automaticall(vertical position0) ◦

8.H. P.:one push to back cart to the programmed storage position automatically ◦

(Horizontal position)

II. Operation instruction

- 1.Aim the LED indicator on remote sensor at TV.
The remote range is 3-10m.
- 2.When you press one of the function key on remote sensor straightly(raise,lower,left,right,up,down), the mount will move to the direction you expected.Loosening,the mount will stop.
- 3.Insert one 23A,12Vbattery in the remote sensor.
If the battery ran out,please open the back cover of the sensor and put in the new one.

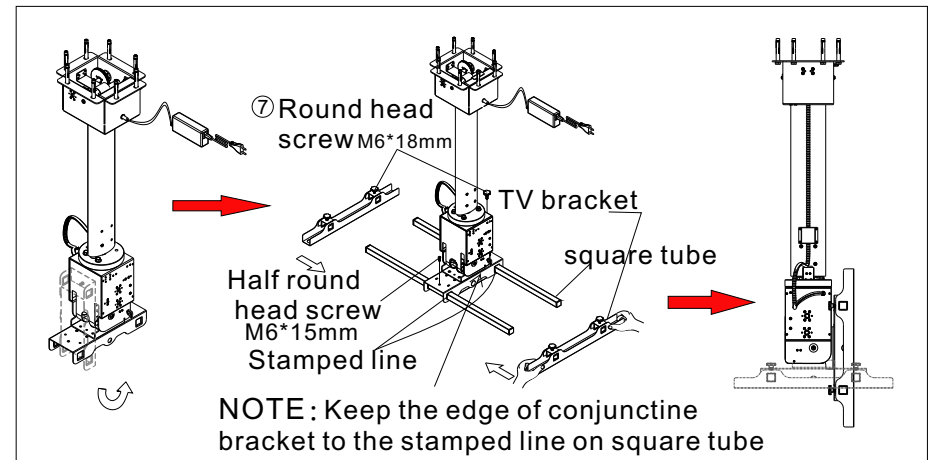


- 2.Take out the power plug from carton. Insert one end to TV cart and other end to power supply.

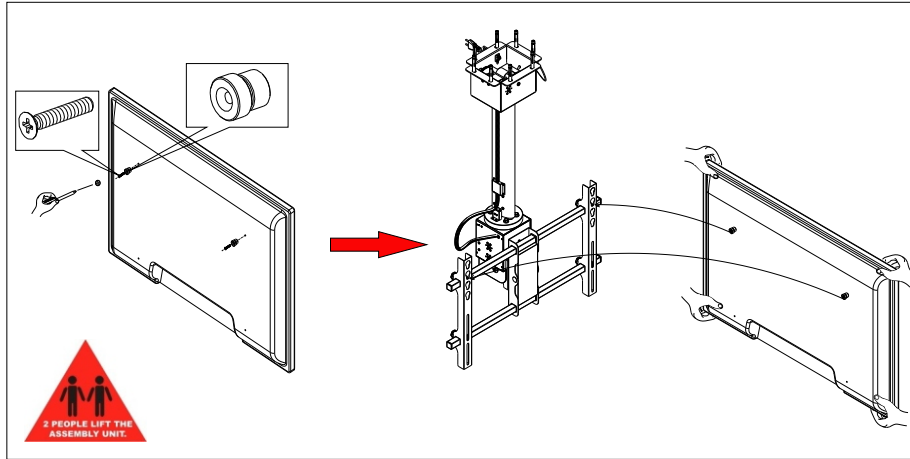
Note:

Please fasten the power plug or placed it to appropriate place

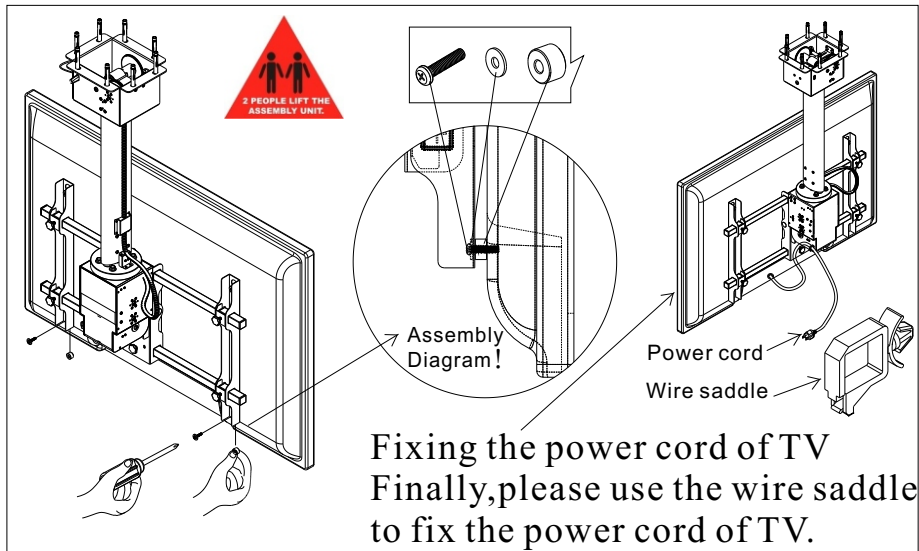
3. Connect power and press "Down" key on the remote sensor to let the cart pitch to horizontal position. Insert square tube into conjunctive bracket and fasten them by ⑦ round head screw and M6*15mm half round head screw. Hang TV bracket on square tube and fasten by ⑦ round head screw.(see the diagram)



4. Fasten ② tab on the upper end of TV back panel by ① sink head screw. Check fastness, then hook TV on the cart's TV bracket. (see the diagram)



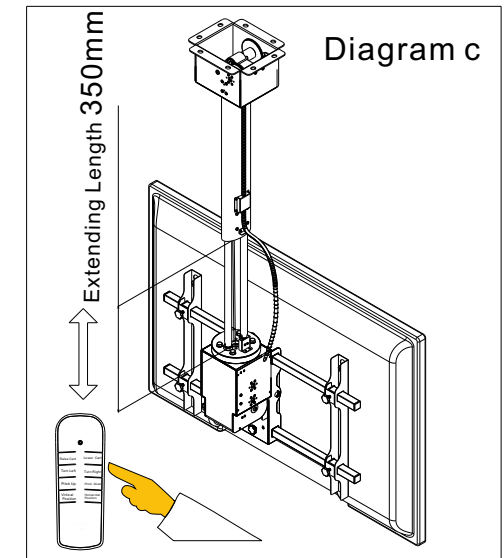
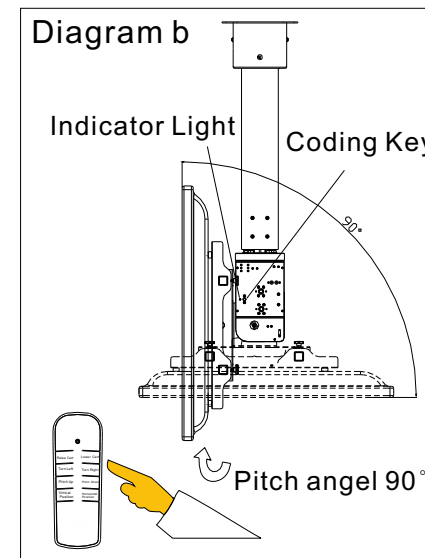
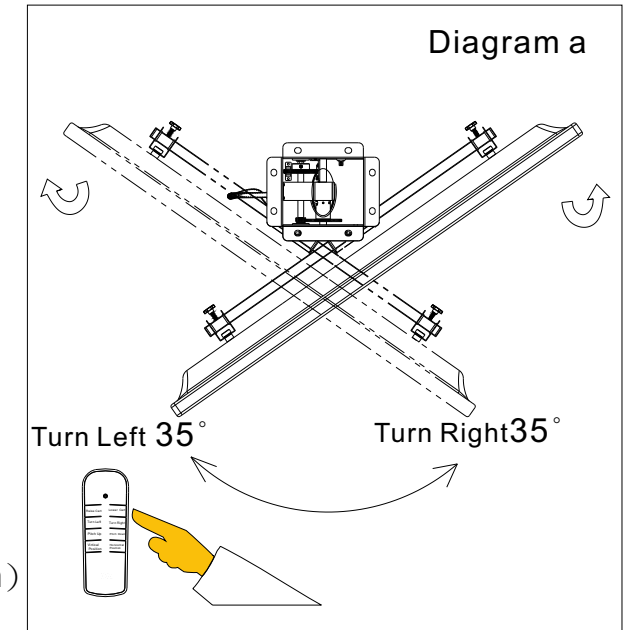
5. Through ④ washer and slot of TV bracket and ⑤ pad, ③ pan head screw fasten the down side of TV. ⑤ Pad should be placed between TV bracket and TV.



3-2. Operating Instruction.

A. Function

Using remote sensor can turn TV left or right to angel 35°, and pitch up or down to 90° angel (vertical or horizontal), lower length is 350mm. (See a;b;c diagram)



**NOTE: THE MANUFACTURER IS NOT RESPONSIBLE FOR ANY RADIO OR TV
INTERFERENCE CAUSED BY UNAUTHORIZED MODIFICATIONS TO THIS
EQUIPMENT. SUCH MODIFICATIONS COULD VOID THE USER'S AUTHORITY
TO OPERATE THE EQUIPMENT.**