

BLUETOOTH DONGLE

Users Manual

CWT

1. SPEC & Operating system
2. Speed setting
3. Attentions
4. FCC Interference Statement

CWT

1. SPEC & Operating system

◆ Model Number : CWT-7042r

◆ Broadcom chipset Bluetooth class1+ EDR

◆ Physical Specifications :

Dimension 65.35 × 20.2 × 8.8 mm (L × W × H) °

◆ Profile Support :

A2DP-Source 、 AVRCP-Target 、 GAVDP 、 BIP 、
DUN-DT/GW 、 Fax-DT/GW 、 FTP-Client/Server 、
HCRP-Client 、 Headset-AG/HS 、 HID-Host 、
OPP-Client/Server 、 PAN-AP/Group/User 、 SPP-Dev
A/ Dev B 、 SDP 、 Sync-Client/Server 、 LAN-DT/GW 、
Generic Access °

◆ Software : Broadcom / Widcomm BTW 5.1.0.1700 or above

◆ System support: Windows XP/2000/ME/98SE

2.Speed Installation

(1) Insert the Bluetooth Presenter software compact disc into the computer's CD drive.

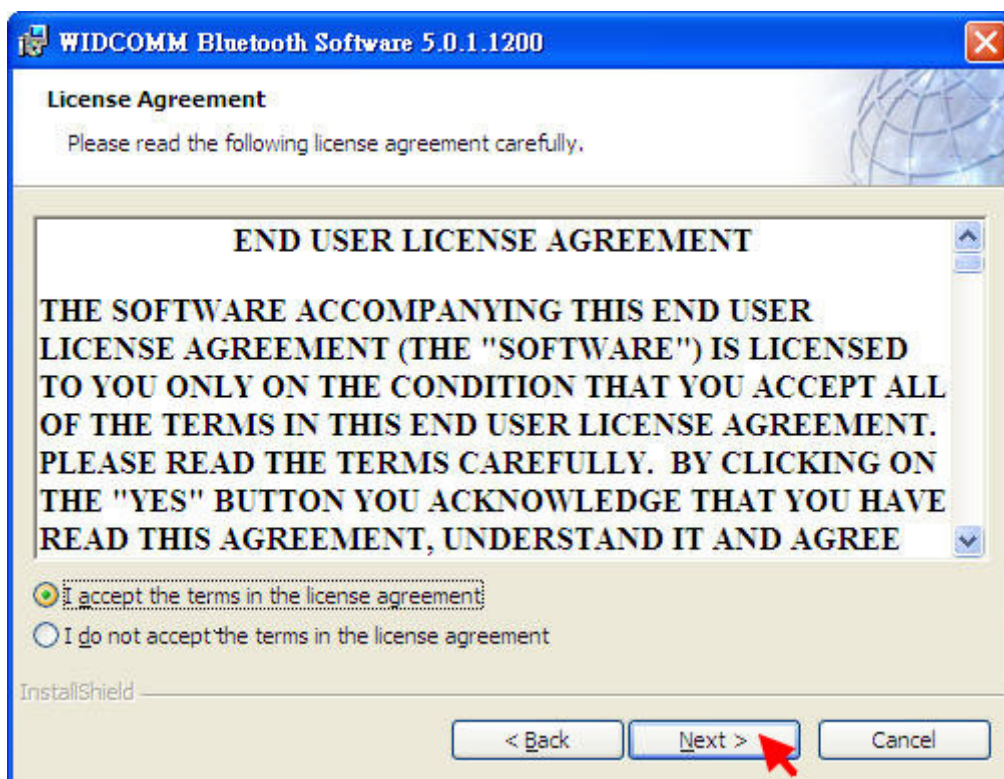
If Setup does not start automatically, do the following:

- Click the **Start** button, and then click **Run**.
- Type `[drive]:setup`. For example, if your CD drive is drive D, type `d:setup`.

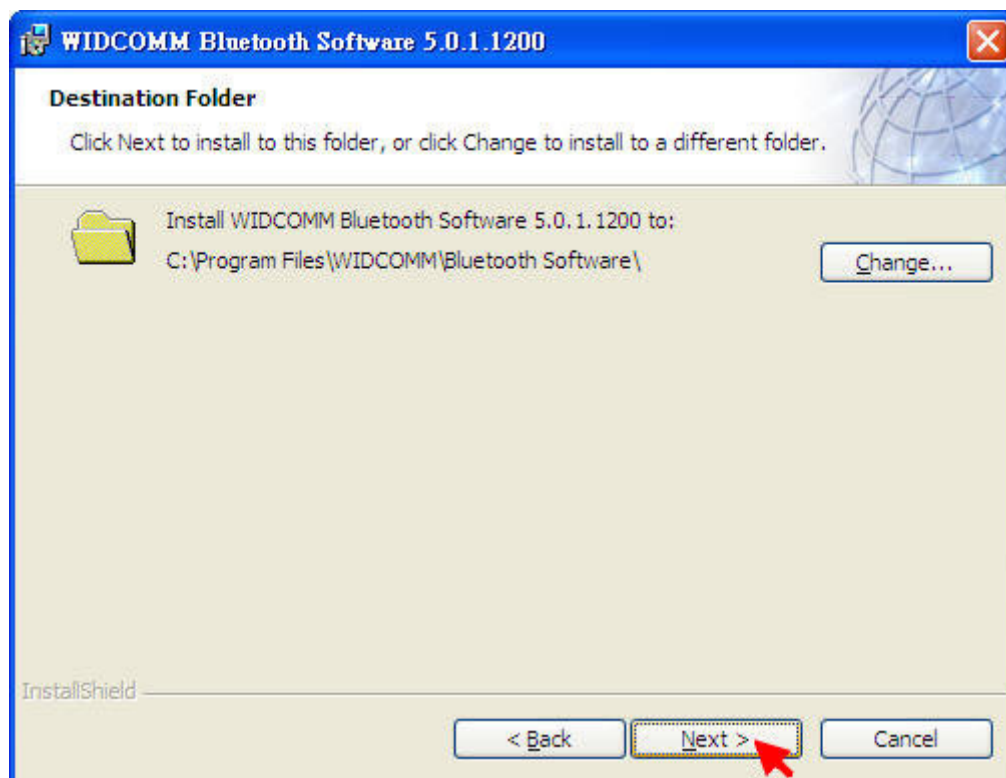
(2) Follow the Setup Wizard instructions on your screen.



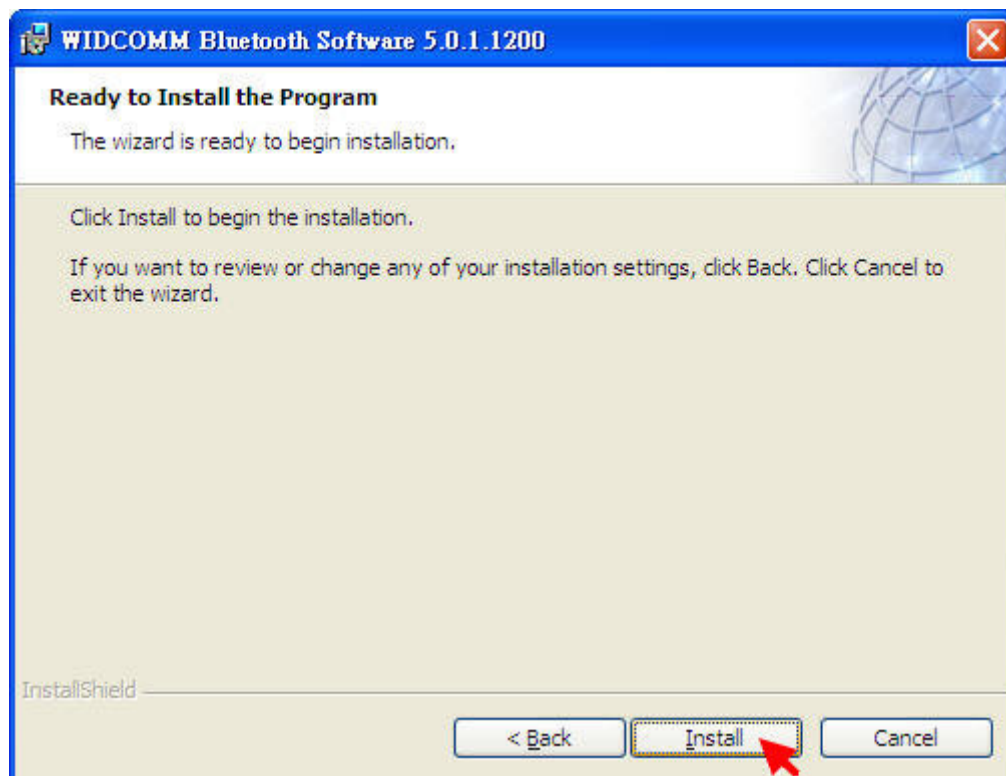
Click 'Next' go to next step.



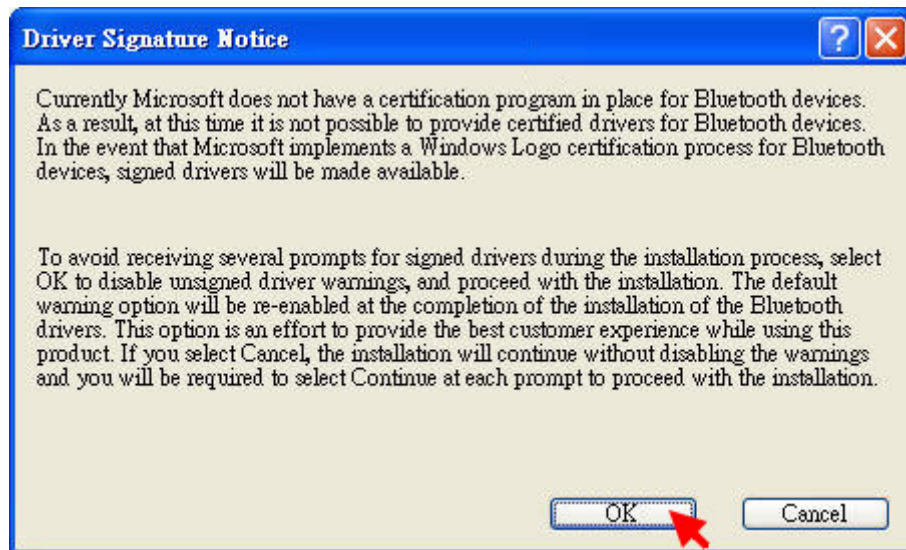
You must choice ' I accept the terms in the license agreement ' and Click 'Next' go to next step.



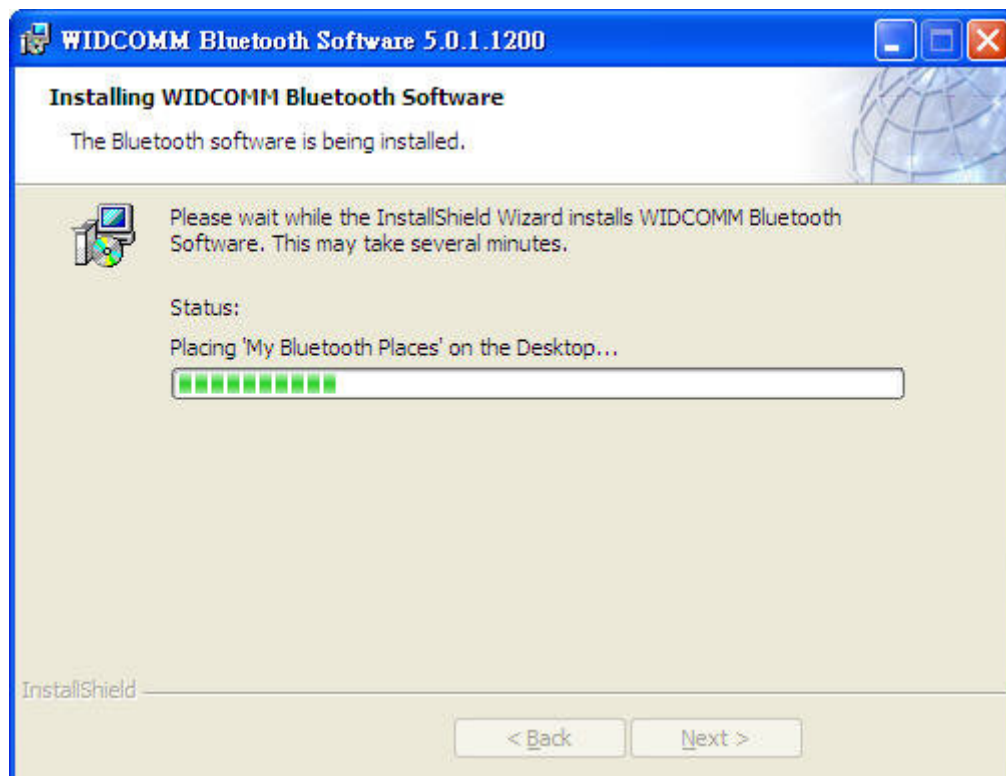
Click 'Next' go to next step.



Click 'Install' go to next step.



There will show Driver Signature Notice for Bluetooth drivers.



There will add ' My Bluetooth Places ' icon on the Desktop.



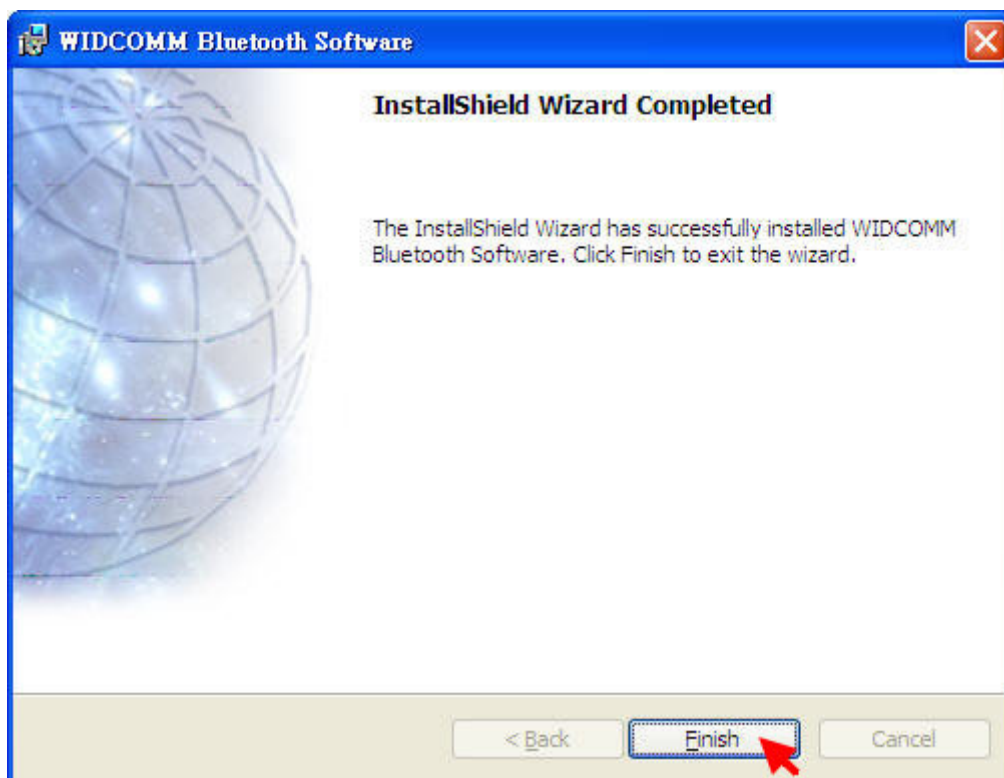
CWT

If your Bluetooth device not found, you can click 'Cancel' to continue installation with the Bluetooth device.



Or you can insert Bluetooth device to the USB port, you can click 'OK' to continue installation with the Bluetooth device.

When the InstallShield Wizard has successfully installed WIDCOMM Bluetooth software.






You can Click 'Finish' to exit the wizard.

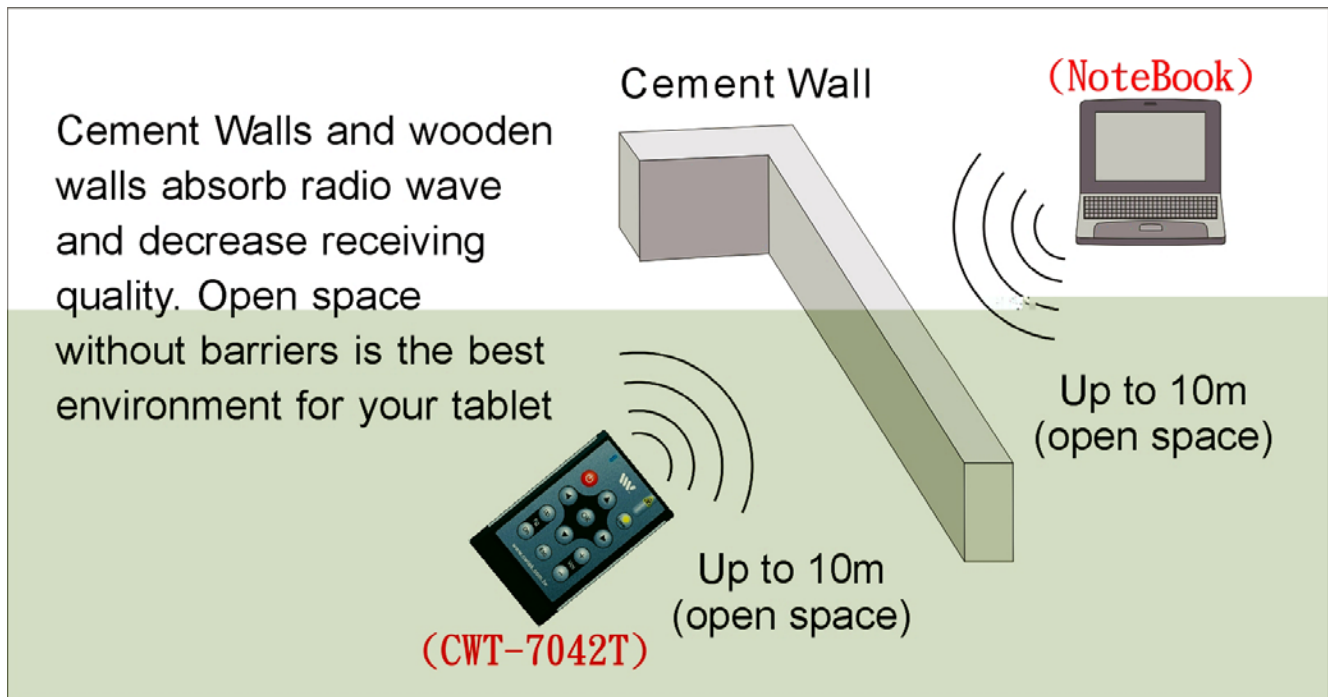
(3) After installation is complete, restart your computer if prompted to do so.

CWT

※Bluetooth cressets

Disabled	Enabled	Connecting
 Blue with Red	 Blue with White	 Blue with Green

3. Attentions



FCC Interference Statement

Federal Communication Commission Interference Statement

This equipment has been tested and found to comply with the limits for a Class B digital device, pursuant to Part 15 of the FCC Rules. These limits are designed to provide reasonable protection against harmful interference in a residential installation.

This equipment generates, uses and can radiate radio frequency energy and, if not installed and used in accordance with the instructions, may cause harmful interference to radio communications. However, there is no guarantee that interference will not occur in a particular installation. If this equipment does cause harmful interference to radio or television reception, which can be determined by turning the equipment off and on, the user is encouraged to try to correct the interference by one of the following measures:

- Reorient or relocate the receiving antenna.
- Increase the separation between the equipment and receiver.
- Connect the equipment into an outlet on a circuit different from that to which the receiver is connected.
- Consult the dealer or an experienced radio/TV technician for help.

FCC Caution : To assure continued compliance, any changes or modifications not expressly approved by the party responsible for compliance could void the user's authority to operate this equipment. (Example - use only shielded interface cables when connecting to computer or peripheral devices).

FCC Radiation Exposure Statement

This equipment complies with FCC RF radiation exposure limits set forth for an uncontrolled environment. This equipment should be installed and operated with a minimum distance of 20 centimeters between the radiator and your body.

This device complies with Part 15 of the FCC Rules. Operation is subject to the following two conditions :

(1) This device may not cause harmful interference, and (2) This device must accept any interference received, including interference that may cause undesired operation.