

#01_WCDMA II_RMC 12.2Kbps_Right Side_10mm_Ch9262

Communication System: WCDMA; Frequency: 1852.4 MHz; Duty Cycle: 1:1

Medium: HSL_1900_200901 Medium parameters used : $f = 1852.4$ MHz; $\sigma = 1.401$ S/m; $\epsilon_r = 39.627$; $\rho = 1000$ kg/m³

Ambient Temperature : 23.4 °C; Liquid Temperature : 22.4 °C

DASY5 Configuration:

- Probe: ES3DV3 - SN3124; ConvF(5.31, 5.31, 5.31) @ 1852.4 MHz; Calibrated: 2019/12/18
- Sensor-Surface: 3mm (Mechanical Surface Detection)
- Electronics: DAE4 Sn316; Calibrated: 2019/12/20
- Phantom: SAM_Right; Type: QD000P40CD; Serial: TP:1815
- Measurement SW: DASY52, Version 52.10 (4); SEMCAD X Version 14.6.14 (7483)

Area Scan (51x141x1): Interpolated grid: dx=1.500 mm, dy=1.500 mm

Maximum value of SAR (interpolated) = 1.42 W/kg

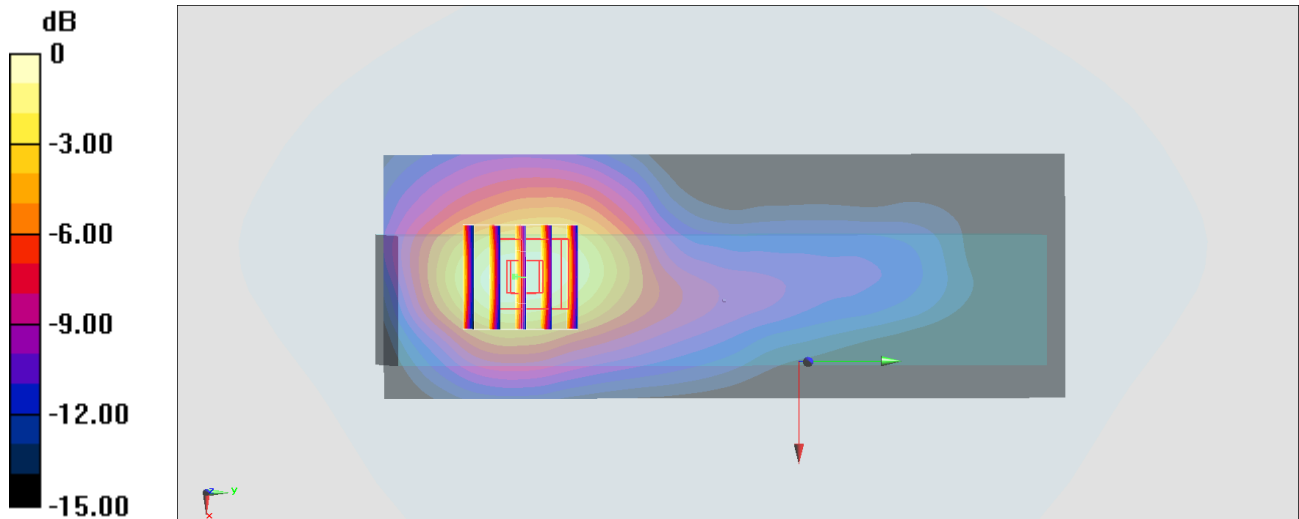
Zoom Scan (5x5x7)/Cube 0: Measurement grid: dx=8mm, dy=8mm, dz=5mm

Reference Value = 11.47 V/m; Power Drift = -0.12 dB

Peak SAR (extrapolated) = 1.74 W/kg

SAR(1 g) = 1.1 W/kg; SAR(10 g) = 0.659 W/kg

Maximum value of SAR (measured) = 1.29 W/kg



0 dB = 1.42 W/kg = 1.52 dBW/kg

#02_WCDMA IV_RMC 12.2Kbps_Right Side_10mm_Ch1513

Communication System: WCDMA; Frequency: 1752.6 MHz; Duty Cycle: 1:1

Medium: HSL_1750_200901 Medium parameters used: $f = 1753$ MHz; $\sigma = 1.363$ S/m; $\epsilon_r = 40.066$; $\rho = 1000$ kg/m³

Ambient Temperature : 23.4 °C ; Liquid Temperature : 22.4 °C

DASY5 Configuration:

- Probe: ES3DV3 - SN3124; ConvF(5.53, 5.53, 5.53) @ 1752.6 MHz; Calibrated: 2019/12/18
- Sensor-Surface: 3mm (Mechanical Surface Detection)
- Electronics: DAE4 Sn316; Calibrated: 2019/12/20
- Phantom: SAM_Right; Type: QD000P40CD; Serial: TP:1815
- Measurement SW: DASY52, Version 52.10 (4); SEMCAD X Version 14.6.14 (7483)

Area Scan (51x141x1): Interpolated grid: dx=1.500 mm, dy=1.500 mm

Maximum value of SAR (interpolated) = 1.45 W/kg

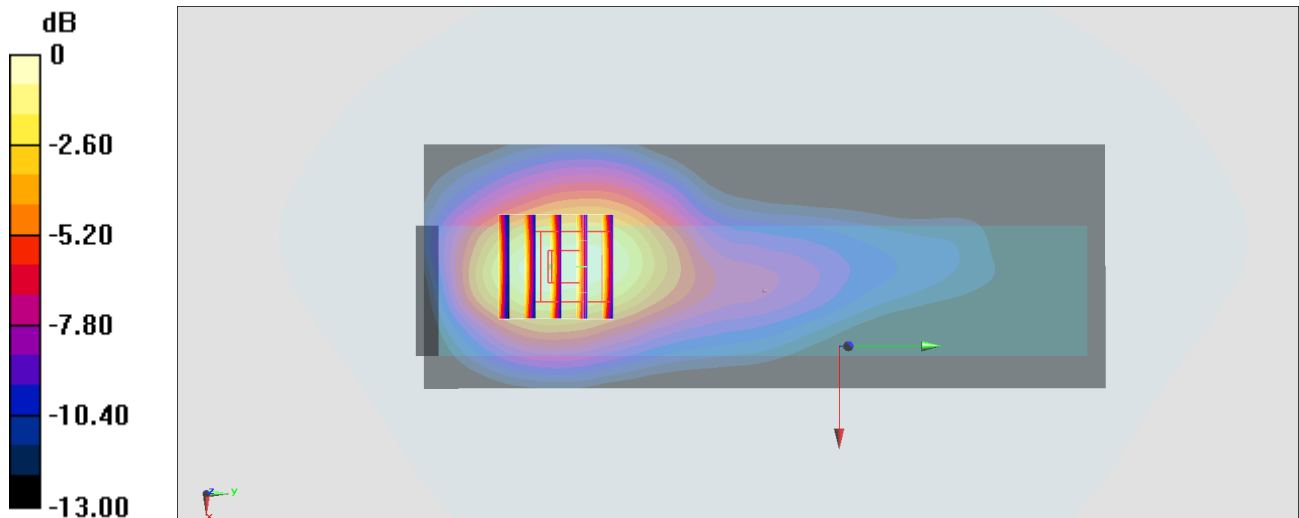
Zoom Scan (5x5x7)/Cube 0: Measurement grid: dx=8mm, dy=8mm, dz=5mm

Reference Value = 13.79 V/m; Power Drift = 0.01 dB

Peak SAR (extrapolated) = 1.75 W/kg

SAR(1 g) = 1.13 W/kg; SAR(10 g) = 0.692 W/kg

Maximum value of SAR (measured) = 1.33 W/kg



0 dB = 1.45 W/kg = 1.61 dBW/kg

#03_WCDMA V_RMC 12.2Kbps_Right Side_10mm_Ch4233

Communication System: WCDMA ; Frequency: 846.6 MHz;Duty Cycle: 1:1

Medium: HSL_850_200817 Medium parameters used: $f = 847$ MHz; $\sigma = 0.882$ S/m; $\epsilon_r = 41.656$; $\rho = 1000$ kg/m³

Ambient Temperature : 23.4 °C ; Liquid Temperature : 22.4 °C

DASY5 Configuration:

- Probe: EX3DV4 - SN7306; ConvF(9.61, 9.61, 9.61) @ 846.6 MHz; Calibrated: 2020/7/24
- Sensor-Surface: 1.4mm (Mechanical Surface Detection)
- Electronics: DAE4 Sn1424; Calibrated: 2020/1/24
- Phantom: SAM_Right; Type: SAM; Serial: TP:1446
- Measurement SW: DASY52, Version 52.10 (4);SEMCAD X Version 14.6.14 (7483)

Area Scan (61x71x1): Interpolated grid: dx=1.500 mm, dy=1.500 mm

Maximum value of SAR (interpolated) = 1.22 W/kg

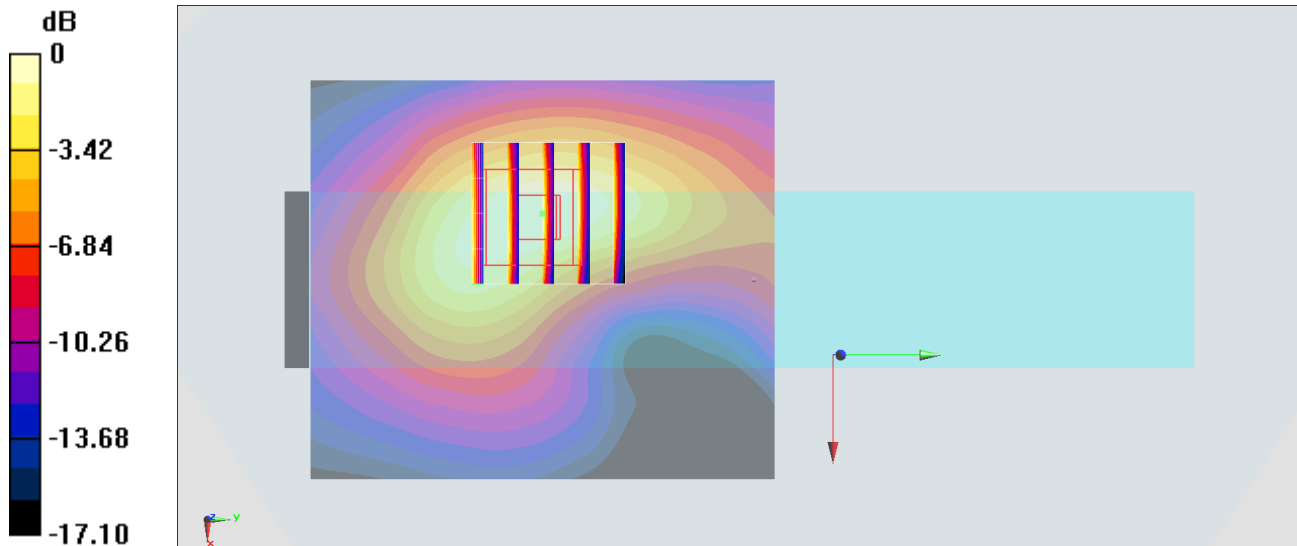
Zoom Scan (5x5x7)/Cube 0: Measurement grid: dx=8mm, dy=8mm, dz=5mm

Reference Value = 37.30 V/m; Power Drift = 0.19 dB

Peak SAR (extrapolated) = 1.43 W/kg

SAR(1 g) = 0.771 W/kg; SAR(10 g) = 0.422 W/kg

Maximum value of SAR (measured) = 1.20 W/kg



0 dB = 1.20 W/kg = 0.79 dBW/kg

#04_LTE Band 2_20M_QPSK_1_0_Right Side_10mm_Ch18700

Communication System: LTE; Frequency: 1860 MHz; Duty Cycle: 1:1

Medium: HSL_1900_200901 Medium parameters used: $f = 1860$ MHz; $\sigma = 1.409$ S/m; $\epsilon_r = 39.615$; $\rho = 1000$ kg/m³

Ambient Temperature : 23.4 °C; Liquid Temperature : 22.4 °C

DASY5 Configuration:

- Probe: ES3DV3 - SN3124; ConvF(5.31, 5.31, 5.31) @ 1860 MHz; Calibrated: 2019/12/18
- Sensor-Surface: 3mm (Mechanical Surface Detection)
- Electronics: DAE4 Sn316; Calibrated: 2019/12/20
- Phantom: SAM_Right; Type: QD000P40CD; Serial: TP:1815
- Measurement SW: DASY52, Version 52.10 (4); SEMCAD X Version 14.6.14 (7483)

Area Scan (51x141x1): Interpolated grid: dx=1.500 mm, dy=1.500 mm

Maximum value of SAR (interpolated) = 1.07 W/kg

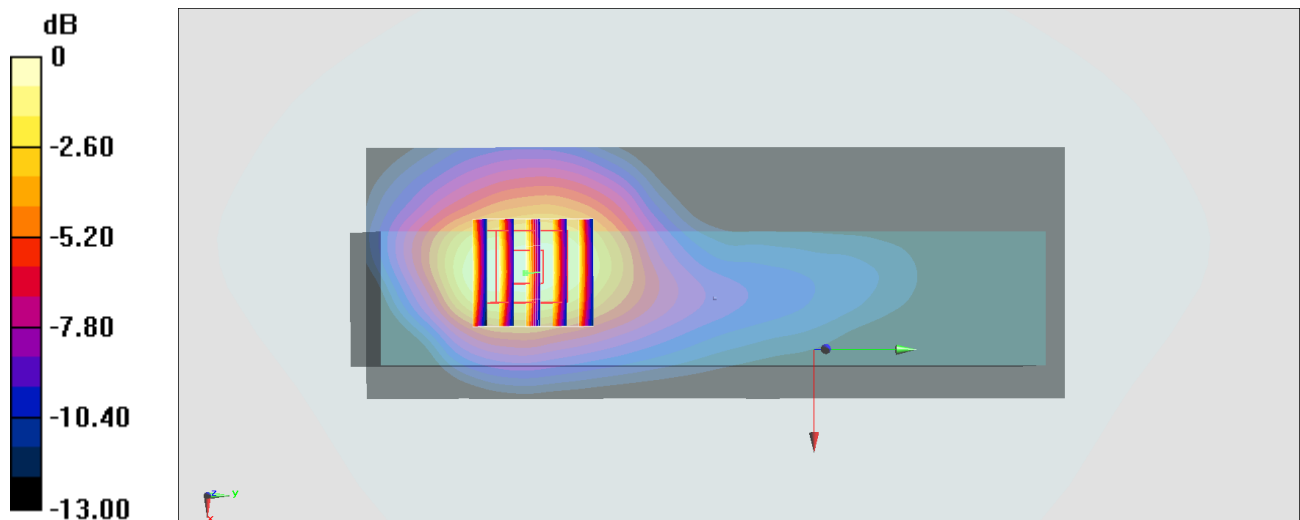
Zoom Scan (5x5x7)/Cube 0: Measurement grid: dx=8mm, dy=8mm, dz=5mm

Reference Value = 10.15 V/m; Power Drift = -0.08 dB

Peak SAR (extrapolated) = 1.32 W/kg

SAR(1 g) = 1.03 W/kg; SAR(10 g) = 0.605 W/kg

Maximum value of SAR (measured) = 0.987 W/kg



0 dB = 1.07 W/kg = 0.29 dBW/kg

#05_LTE Band 5_10M_QPSK_1_0_Right Side_10mm_Ch20525

Communication System: LTE; Frequency: 836.5 MHz; Duty Cycle: 1:1

Medium: HSL_850_200903 Medium parameters used : $f = 836.5$ MHz; $\sigma = 0.879$ S/m; $\epsilon_r = 41.927$; $\rho = 1000$ kg/m³

Ambient Temperature : 23.4 °C ; Liquid Temperature : 22.4 °C

DASY5 Configuration:

- Probe: ES3DV3 - SN3124; ConvF(6.28, 6.28, 6.28) @ 836.5 MHz; Calibrated: 2019/12/18
- Sensor-Surface: 3mm (Mechanical Surface Detection)
- Electronics: DAE4 Sn316; Calibrated: 2019/12/20
- Phantom: SAM_Right; Type: QD000P40CD; Serial: TP:1815
- Measurement SW: DASY52, Version 52.10 (4); SEMCAD X Version 14.6.14 (7483)

Area Scan (41x71x1): Interpolated grid: dx=1.500 mm, dy=1.500 mm

Maximum value of SAR (interpolated) = 0.858 W/kg

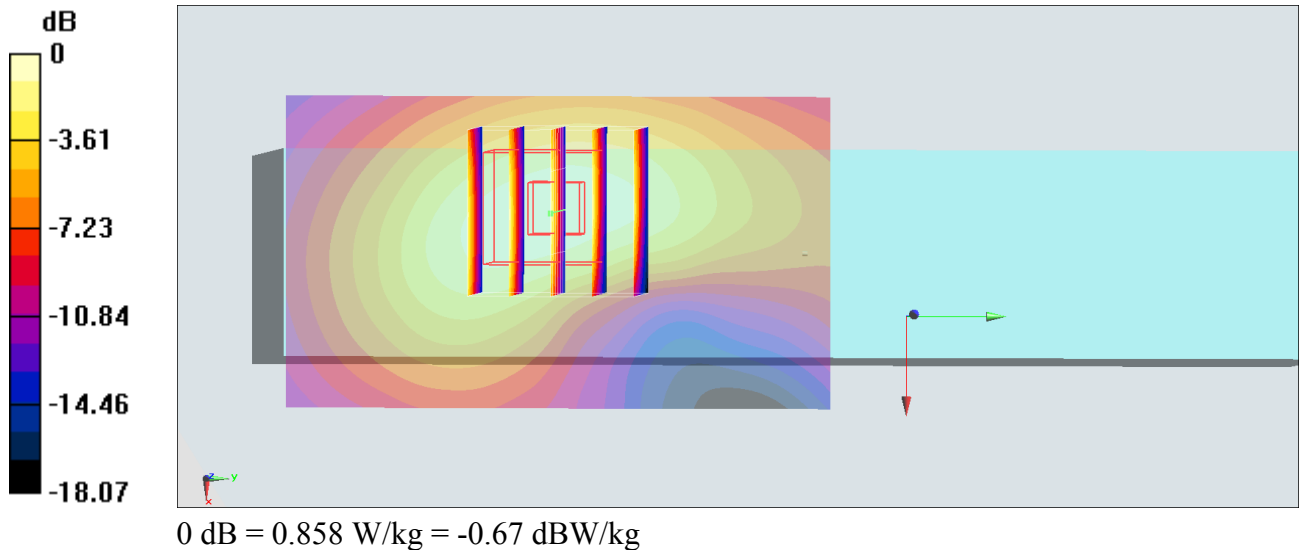
Zoom Scan (5x5x7)/Cube 0: Measurement grid: dx=8mm, dy=8mm, dz=5mm

Reference Value = 14.90 V/m; Power Drift = -0.06 dB

Peak SAR (extrapolated) = 1.09 W/kg

SAR(1 g) = 0.681 W/kg; SAR(10 g) = 0.417 W/kg

Maximum value of SAR (measured) = 0.815 W/kg



#06_LTE Band 7_20M_QPSK_1_0_Right Side_10mm_Ch21350

Communication System: LTE; Frequency: 2560 MHz; Duty Cycle: 1:1

Medium: HSL_2600_200904 Medium parameters used: $f = 2560$ MHz; $\sigma = 1.954$ S/m; $\epsilon_r = 39.322$; $\rho = 1000$ kg/m³

Ambient Temperature : 23.4 °C ; Liquid Temperature : 22.4 °C

DASY5 Configuration:

- Probe: ES3DV3 - SN3124; ConvF(4.46, 4.46, 4.46) @ 2560 MHz; Calibrated: 2019/12/18
- Sensor-Surface: 3mm (Mechanical Surface Detection)
- Electronics: DAE4 Sn316; Calibrated: 2019/12/20
- Phantom: SAM_Right; Type: QD000P40CD; Serial: TP:1815
- Measurement SW: DASY52, Version 52.10 (4); SEMCAD X Version 14.6.14 (7483)

Area Scan (61x81x1): Interpolated grid: dx=1.200 mm, dy=1.200 mm

Maximum value of SAR (interpolated) = 0.741 W/kg

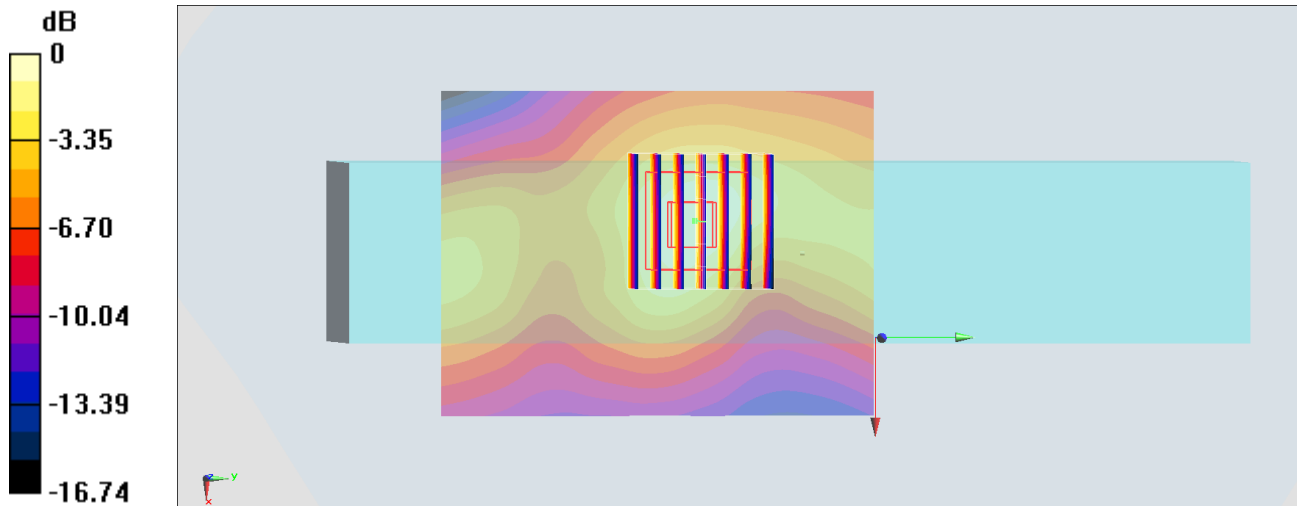
Zoom Scan (7x7x7)/Cube 0: Measurement grid: dx=5mm, dy=5mm, dz=5mm

Reference Value = 13.08 V/m; Power Drift = -0.03 dB

Peak SAR (extrapolated) = 1.06 W/kg

SAR(1 g) = 0.606 W/kg; SAR(10 g) = 0.318 W/kg

Maximum value of SAR (measured) = 0.757 W/kg



0 dB = 0.741 W/kg = -1.30 dBW/kg

#07_LTE Band 12_10M_QPSK_1_0_Right Side_10mm_Ch23095

Communication System: LTE ; Frequency: 707.5 MHz; Duty Cycle: 1:1

Medium: HSL_750_200816 Medium parameters used : $f = 707.5$ MHz; $\sigma = 0.853$ S/m; $\epsilon_r = 43.165$; $\rho = 1000$ kg/m³

Ambient Temperature : 23.2 °C ; Liquid Temperature : 22.2 °C

DASY5 Configuration:

- Probe: EX3DV4 - SN7306; ConvF(9.92, 9.92, 9.92) @ 707.5 MHz; Calibrated: 2020/7/24
- Sensor-Surface: 1.4mm (Mechanical Surface Detection)
- Electronics: DAE4 Sn1424; Calibrated: 2020/1/24
- Phantom: SAM_Right; Type: SAM; Serial: TP:1446
- Measurement SW: DASY52, Version 52.10 (4); SEMCAD X Version 14.6.14 (7483)

Area Scan (61x71x1): Interpolated grid: dx=1.500 mm, dy=1.500 mm

Maximum value of SAR (interpolated) = 0.518 W/kg

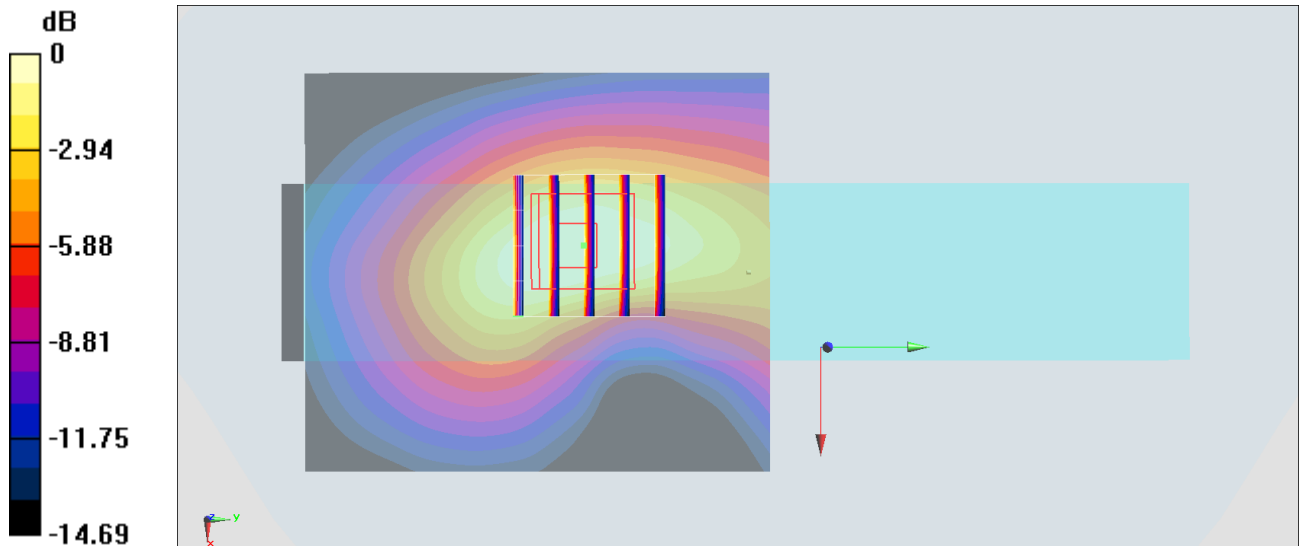
Zoom Scan (5x5x7)/Cube 0: Measurement grid: dx=8mm, dy=8mm, dz=5mm

Reference Value = 24.07 V/m; Power Drift = 0.14 dB

Peak SAR (extrapolated) = 0.535 W/kg

SAR(1 g) = 0.299 W/kg; SAR(10 g) = 0.167 W/kg

Maximum value of SAR (measured) = 0.444 W/kg



#08_LTE Band 13_10M_QPSK_1_0_Right Side_10mm_Ch23230

Communication System: LTE ; Frequency: 782 MHz;Duty Cycle: 1:1

Medium: HSL_750_200816 Medium parameters used: $f = 782 \text{ MHz}$; $\sigma = 0.923 \text{ S/m}$; $\epsilon_r = 42.165$; $\rho = 1000 \text{ kg/m}^3$

Ambient Temperature : $23.2 \text{ }^\circ\text{C}$; Liquid Temperature : $22.2 \text{ }^\circ\text{C}$

DASY5 Configuration:

- Probe: EX3DV4 - SN7306; ConvF(9.92, 9.92, 9.92) @ 782 MHz; Calibrated: 2020/7/24
- Sensor-Surface: 1.4mm (Mechanical Surface Detection)
- Electronics: DAE4 Sn1424; Calibrated: 2020/1/24
- Phantom: SAM_Right; Type: SAM; Serial: TP:1446
- Measurement SW: DASY52, Version 52.10 (4);SEMCAD X Version 14.6.14 (7483)

Area Scan (61x71x1): Interpolated grid: $dx=1.500 \text{ mm}$, $dy=1.500 \text{ mm}$

Maximum value of SAR (interpolated) = 0.872 W/kg

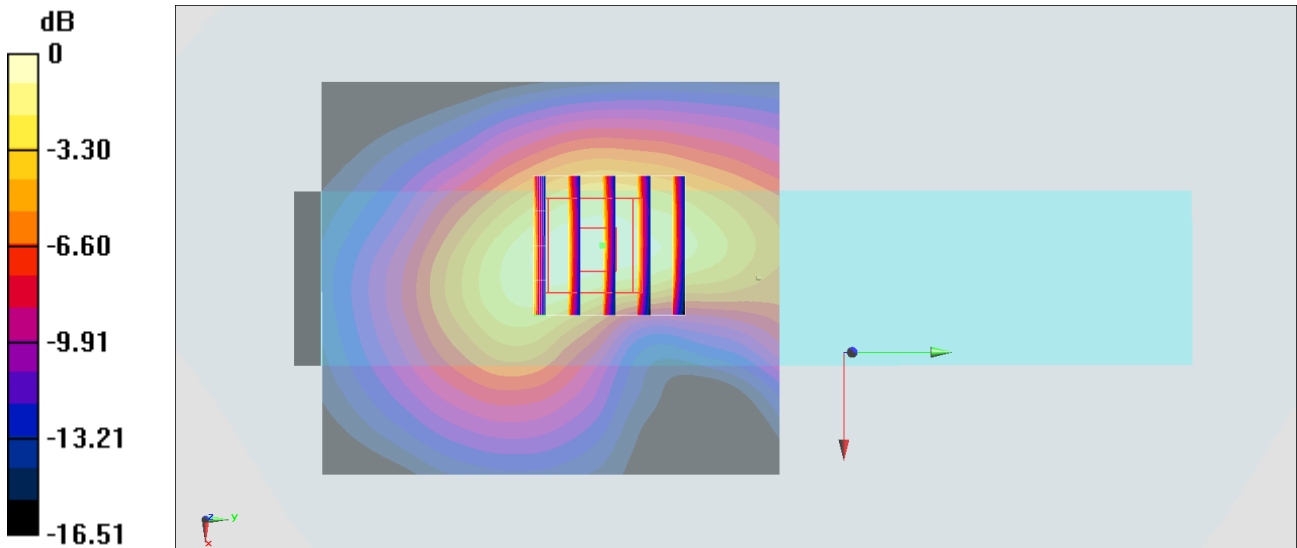
Zoom Scan (5x5x7)/Cube 0: Measurement grid: $dx=8\text{mm}$, $dy=8\text{mm}$, $dz=5\text{mm}$

Reference Value = 30.44 V/m ; Power Drift = 0.13 dB

Peak SAR (extrapolated) = 1.10 W/kg

SAR(1 g) = 0.532 W/kg ; SAR(10 g) = 0.288 W/kg

Maximum value of SAR (measured) = 0.871 W/kg



0 dB = 0.871 W/kg = -0.60 dBW/kg

#09_LTE Band 14_10M_QPSK_1_0_Right Side_10mm_Ch23330

Communication System: LTE ; Frequency: 793 MHz;Duty Cycle: 1:1

Medium: HSL_750_200816 Medium parameters used: $f = 793$ MHz; $\sigma = 0.932$ S/m; $\epsilon_r = 41.984$; $\rho = 1000$ kg/m³

Ambient Temperature : 23.2 °C ; Liquid Temperature : 22.2 °C

DASY5 Configuration:

- Probe: EX3DV4 - SN7306; ConvF(9.92, 9.92, 9.92) @ 793 MHz; Calibrated: 2020/7/24
- Sensor-Surface: 1.4mm (Mechanical Surface Detection)
- Electronics: DAE4 Sn1424; Calibrated: 2020/1/24
- Phantom: SAM_Right; Type: SAM; Serial: TP:1446
- Measurement SW: DASY52, Version 52.10 (4);SEMCAD X Version 14.6.14 (7483)

Area Scan (61x71x1): Interpolated grid: dx=1.500 mm, dy=1.500 mm

Maximum value of SAR (interpolated) = 0.769 W/kg

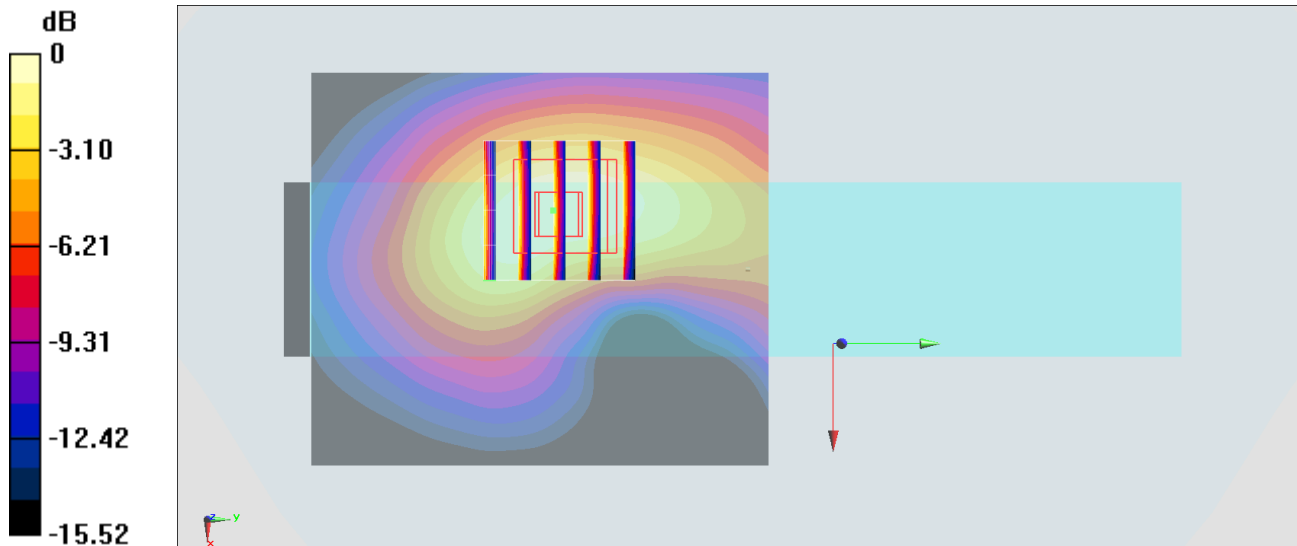
Zoom Scan (5x5x7)/Cube 0: Measurement grid: dx=8mm, dy=8mm, dz=5mm

Reference Value = 29.35 V/m; Power Drift = -0.04 dB

Peak SAR (extrapolated) = 0.867 W/kg

SAR(1 g) = 0.468 W/kg; SAR(10 g) = 0.261 W/kg

Maximum value of SAR (measured) = 0.718 W/kg



0 dB = 0.718 W/kg = -1.44 dBW/kg

#10_LTE Band 66_20M_QPSK_1_0_Right Side_10mm_Ch132572

Communication System: LTE; Frequency: 1770 MHz; Duty Cycle: 1:1

Medium: HSL_1750_200901 Medium parameters used: $f = 1770$ MHz; $\sigma = 1.377$ S/m; $\epsilon_r = 40.011$; $\rho = 1000$ kg/m³

Ambient Temperature : 23.4 °C; Liquid Temperature : 22.4 °C

DASY5 Configuration:

- Probe: ES3DV3 - SN3124; ConvF(5.53, 5.53, 5.53) @ 1770 MHz; Calibrated: 2019/12/18
- Sensor-Surface: 3mm (Mechanical Surface Detection)
- Electronics: DAE4 Sn316; Calibrated: 2019/12/20
- Phantom: SAM_Right; Type: QD000P40CD; Serial: TP:1815
- Measurement SW: DASY52, Version 52.10 (4); SEMCAD X Version 14.6.14 (7483)

Area Scan (51x141x1): Interpolated grid: dx=1.500 mm, dy=1.500 mm

Maximum value of SAR (interpolated) = 1.20 W/kg

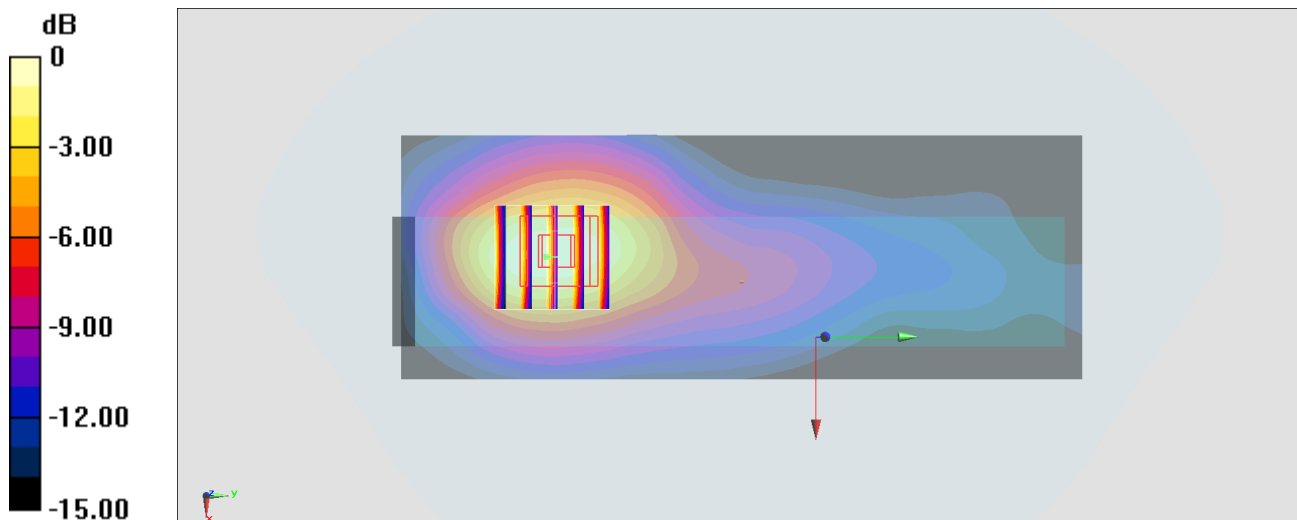
Zoom Scan (5x5x7)/Cube 0: Measurement grid: dx=8mm, dy=8mm, dz=5mm

Reference Value = 12.24 V/m; Power Drift = -0.15 dB

Peak SAR (extrapolated) = 1.37 W/kg

SAR(1 g) = 0.878 W/kg; SAR(10 g) = 0.534 W/kg

Maximum value of SAR (measured) = 1.03 W/kg



0 dB = 1.20 W/kg = 0.79 dBW/kg

#11_WLAN2.4GHz_802.11b 1Mbps_Left Side_10mm_Ch11

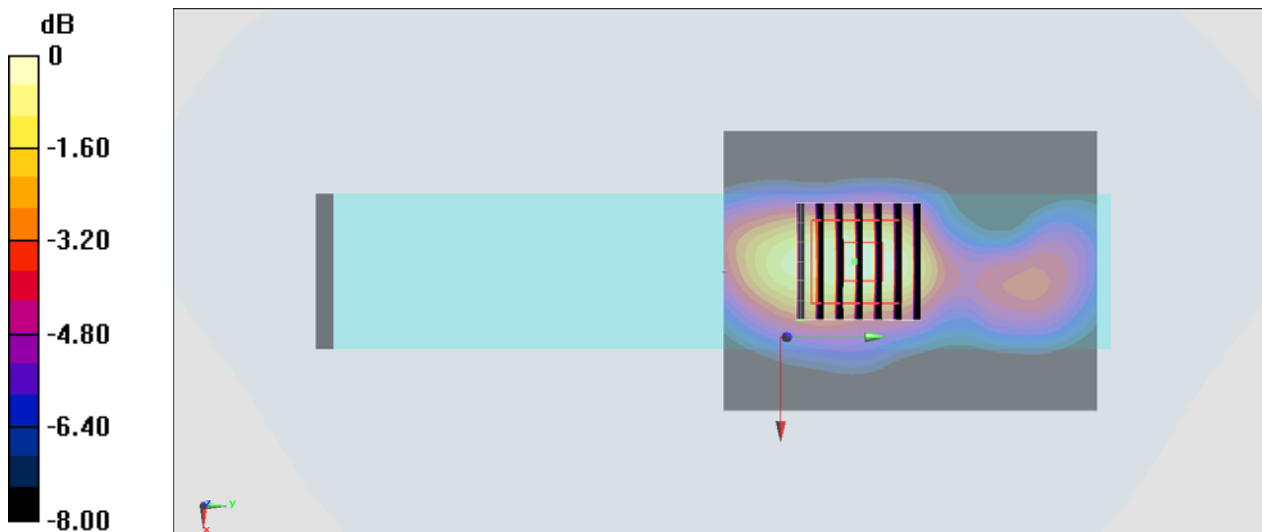
Communication System: 802.11b ; Frequency: 2462 MHz;Duty Cycle: 1:1.007
Medium: HSL_2450_200905 Medium parameters used: $f = 2462$ MHz; $\sigma = 1.833$ S/m; $\epsilon_r = 38.673$;
 $\rho = 1000$ kg/m³
Ambient Temperature : 23.6 °C ; Liquid Temperature : 22.6 °C

DASY5 Configuration

- Probe: ES3DV3 - SN3124;ConvF(4.64, 4.64, 4.64) @ 2462 MHz;Calibrated: 2019/12/18
- Sensor-Surface: 3mm (Mechanical Surface Detection)
- Electronics: DAE4 Sn316; Calibrated: 2019/12/20
- Phantom: SAM_Right; Type: QD000P40CD; Serial: TP:1815
- Measurement SW: DASY52, Version 52.10 (4); SEMCAD X Version 14.6.14 (7483)

Area Scan (61x81x1): Interpolated grid: dx=1.200 mm, dy=1.200 mm
Maximum value of SAR (interpolated) = 0.388 W/kg

Zoom Scan (7x7x7)/Cube 0: Measurement grid: dx=5mm, dy=5mm, dz=5mm
Reference Value = 9.525 V/m; Power Drift = 0.12 dB
Peak SAR (extrapolated) = 0.667 W/kg
SAR(1 g) = 0.329 W/kg; SAR(10 g) = 0.171 W/kg
Maximum value of SAR (measured) = 0.413 W/kg



0 dB = 0.413 W/kg = -3.84 dBW/kg

#12_WLAN5GHz_802.11n-HT40 MCS0_Left Side_10mm_Ch46

Communication System: 802.11n; Frequency: 5230 MHz; Duty Cycle: 1:1.037

Medium: HSL_5G_200905 Medium parameters used: $f = 5230$ MHz; $\sigma = 4.607$ S/m; $\epsilon_r = 36.838$; $\rho = 1000$ kg/m³

Ambient Temperature : 23.4 °C; Liquid Temperature : 22.4 °C

DASY5 Configuration

- Probe: EX3DV4 - SN7306; ConvF(5.36, 5.36, 5.36) @ 5230 MHz; Calibrated: 2020/7/24
- Sensor-Surface: 1.4mm (Mechanical Surface Detection)
- Electronics: DAE3 Sn495; Calibrated: 2020/7/21
- Phantom: SAM LEFT; Type: QD000P40CD; Serial: TP:1718
- Measurement SW: DASY52, Version 52.10 (4); SEMCAD X Version 14.6.14 (7483)

Area Scan (81x101x1): Interpolated grid: dx=1.000 mm, dy=1.000 mm

Maximum value of SAR (interpolated) = 2.61 W/kg

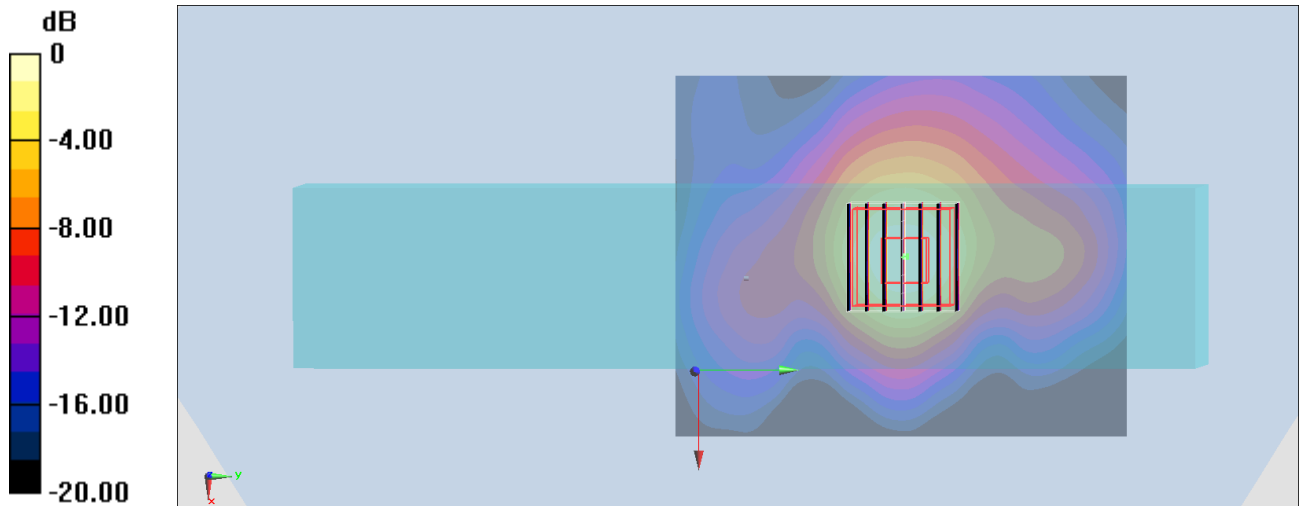
Zoom Scan (7x7x7)/Cube 0: Measurement grid: dx=4mm, dy=4mm, dz=1.4mm

Reference Value = 21.31 V/m; Power Drift = -0.07 dB

Peak SAR (extrapolated) = 4.10 W/kg

SAR(1 g) = 1.09 W/kg; SAR(10 g) = 0.440 W/kg

Maximum value of SAR (measured) = 2.62 W/kg



0 dB = 2.62 W/kg = 4.18 dBW/kg

#13_WLAN5GHz_802.11ac-VHT80 MCS0_Left Side_10mm_Ch155

Communication System: 802.11ac; Frequency: 5775 MHz; Duty Cycle: 1:1.084

Medium: HSL_5G_200905 Medium parameters used: $f = 5775$ MHz; $\sigma = 5.158$ S/m; $\epsilon_r = 35.79$; $\rho = 1000$ kg/m³

Ambient Temperature : 23.4 °C ; Liquid Temperature : 22.4 °C

DASY5 Configuration

- Probe: EX3DV4 - SN7306; ConvF(4.91, 4.91, 4.91) @ 5775 MHz; Calibrated: 2020/7/24
- Sensor-Surface: 1.4mm (Mechanical Surface Detection)
- Electronics: DAE3 Sn495; Calibrated: 2020/7/21
- Phantom: SAM LEFT; Type: QD000P40CD; Serial: TP:1718
- Measurement SW: DASY52, Version 52.10 (4); SEMCAD X Version 14.6.14 (7483)

Area Scan (81x101x1): Interpolated grid: dx=1.000 mm, dy=1.000 mm

Maximum value of SAR (interpolated) = 2.07 W/kg

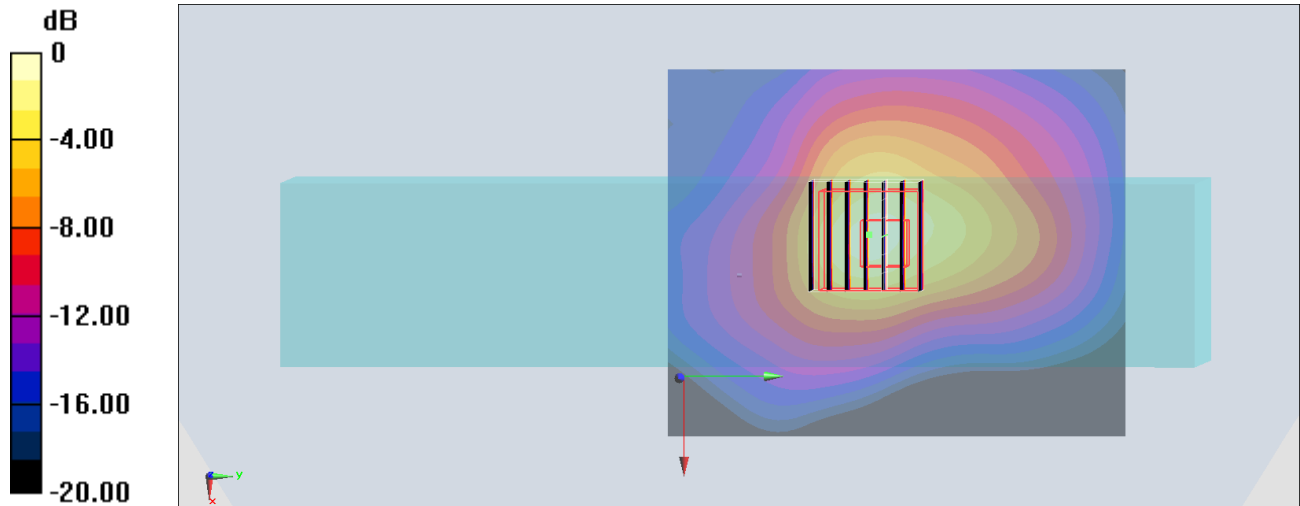
Zoom Scan (7x7x7)/Cube 0: Measurement grid: dx=4mm, dy=4mm, dz=1.4mm

Reference Value = 23.45 V/m; Power Drift = -0.13 dB

Peak SAR (extrapolated) = 3.72 W/kg

SAR(1 g) = 1.13 W/kg; SAR(10 g) = 0.411 W/kg

Maximum value of SAR (measured) = 2.41 W/kg



0 dB = 2.41 W/kg = 3.82 dBW/kg

#14_Bluetooth_LE-1Mbps_Left Side_10mm_Ch39

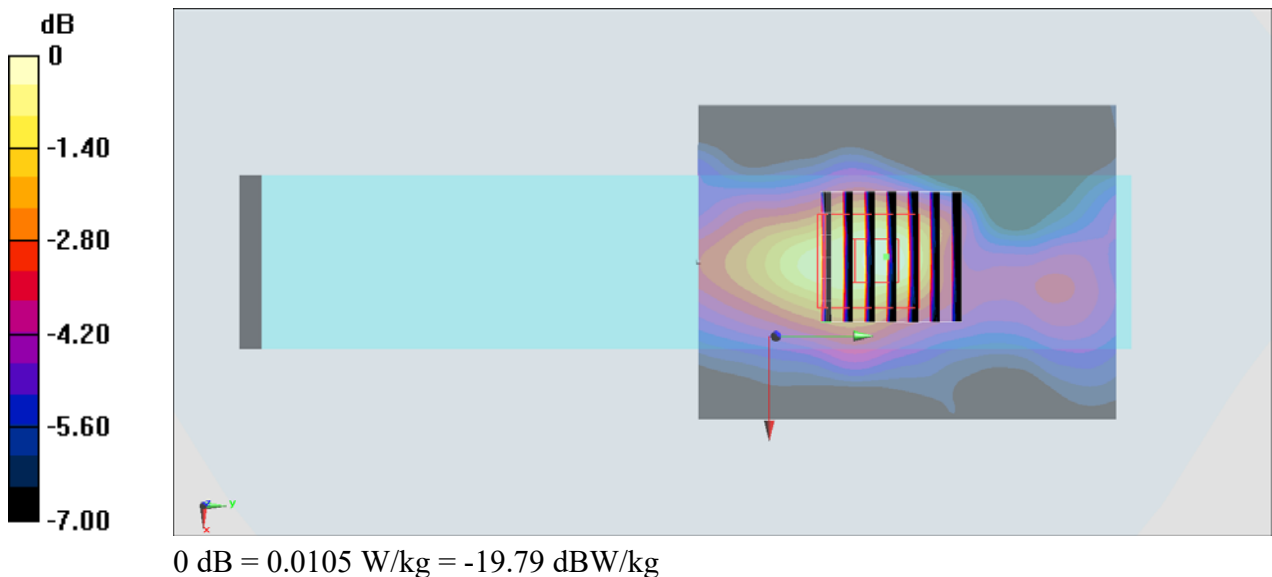
Communication System: Bluetooth; Frequency: 2480 MHz; Duty Cycle: 1:1.605
 Medium: HSL_2450_200905 Medium parameters used: $f = 2480 \text{ MHz}$; $\sigma = 1.853 \text{ S/m}$; $\epsilon_r = 38.625$;
 $\rho = 1000 \text{ kg/m}^3$
 Ambient Temperature : $23.6 \text{ }^\circ\text{C}$; Liquid Temperature : $22.6 \text{ }^\circ\text{C}$

DASY5 Configuration

- Probe: ES3DV3 - SN3124; ConvF(4.64, 4.64, 4.64) @ 2480 MHz; Calibrated: 2019/12/18
- Sensor-Surface: 3mm (Mechanical Surface Detection)
- Electronics: DAE4 Sn316; Calibrated: 2019/12/20
- Phantom: SAM_Right; Type: QD000P40CD; Serial: TP:1815
- Measurement SW: DASY52, Version 52.10 (4); SEMCAD X Version 14.6.14 (7483)

Area Scan (61x81x1): Interpolated grid: $dx=1.200 \text{ mm}$, $dy=1.200 \text{ mm}$
 Maximum value of SAR (interpolated) = 0.0102 W/kg

Zoom Scan (7x7x7)/Cube 0: Measurement grid: $dx=5\text{mm}$, $dy=5\text{mm}$, $dz=5\text{mm}$
 Reference Value = 1.635 V/m ; Power Drift = 0.11 dB
 Peak SAR (extrapolated) = 0.0160 W/kg
SAR(1 g) = 0.00825 W/kg ; SAR(10 g) = 0.00496 W/kg
 Maximum value of SAR (measured) = 0.0105 W/kg



#15_WCDMA II_RMC 12.2Kbps_Right Side_0mm_Ch9538;Holster 2+Trigger handle

Communication System: WCDMA; Frequency: 1907.6 MHz; Duty Cycle: 1:1

Medium: HSL_1900_200901 Medium parameters used: $f = 1908$ MHz; $\sigma = 1.46$ S/m; $\epsilon_r = 39.403$; $\rho = 1000$ kg/m³

Ambient Temperature : 23.4 °C ; Liquid Temperature : 22.4 °C

DASY5 Configuration:

- Probe: ES3DV3 - SN3124; ConvF(5.31, 5.31, 5.31) @ 1907.6 MHz; Calibrated: 2019/12/18
- Sensor-Surface: 3mm (Mechanical Surface Detection)
- Electronics: DAE4 Sn316; Calibrated: 2019/12/20
- Phantom: SAM_Right; Type: QD000P40CD; Serial: TP:1815
- Measurement SW: DASY52, Version 52.10 (4); SEMCAD X Version 14.6.14 (7483)

Area Scan (51x141x1): Interpolated grid: dx=1.500 mm, dy=1.500 mm

Maximum value of SAR (interpolated) = 0.841 W/kg

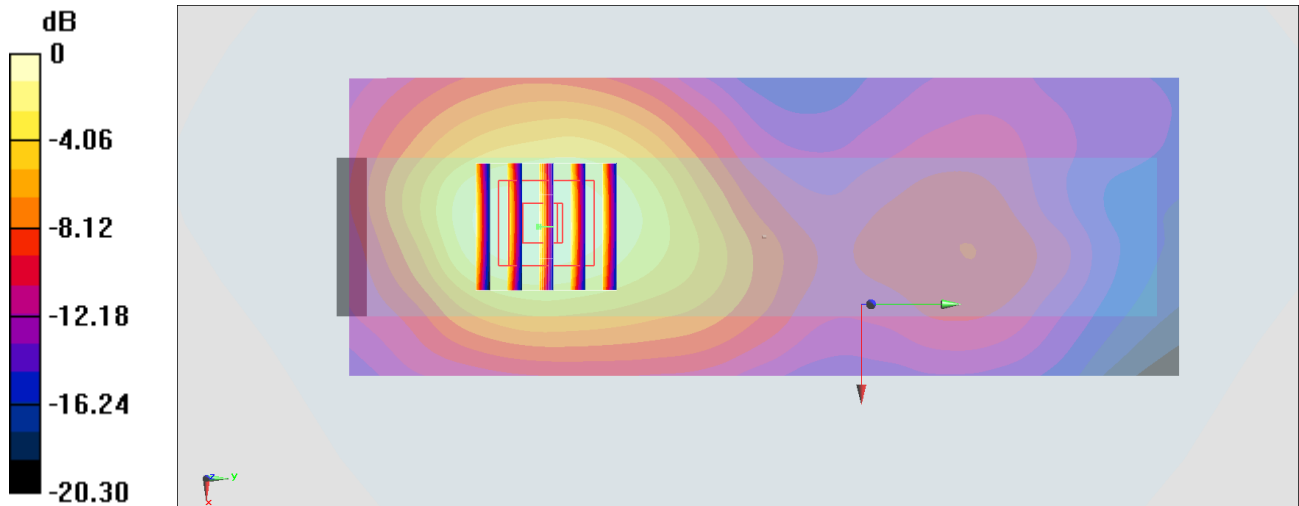
Zoom Scan (5x5x7)/Cube 0: Measurement grid: dx=8mm, dy=8mm, dz=5mm

Reference Value = 8.746 V/m; Power Drift = 0.09 dB

Peak SAR (extrapolated) = 1.10 W/kg

SAR(1 g) = 0.699 W/kg; SAR(10 g) = 0.424 W/kg

Maximum value of SAR (measured) = 0.829 W/kg



0 dB = 0.841 W/kg = -0.75 dBW/kg

#16_WCDMA IV_RMC 12.2Kbps_Right Side_0mm_Ch1413;Holster 2+Trigger handle

Communication System: WCDMA; Frequency: 1732.6 MHz;Duty Cycle: 1:1

Medium: HSL_1750_200901 Medium parameters used: $f = 1733$ MHz; $\sigma = 1.343$ S/m; $\epsilon_r = 40.119$; $\rho = 1000$ kg/m³

Ambient Temperature : 23.4 °C ; Liquid Temperature : 22.4 °C

DASY5 Configuration:

- Probe: ES3DV3 - SN3124;ConvF(5.53, 5.53, 5.53) @ 1732.6 MHz;Calibrated: 2019/12/18
- Sensor-Surface: 3mm (Mechanical Surface Detection)
- Electronics: DAE4 Sn316; Calibrated: 2019/12/20
- Phantom: SAM_Right; Type: QD000P40CD; Serial: TP:1815
- Measurement SW: DASY52, Version 52.10 (4);SEMCAD X Version 14.6.14 (7483)

Area Scan (51x141x1): Interpolated grid: dx=1.500 mm, dy=1.500 mm

Maximum value of SAR (interpolated) = 0.903 W/kg

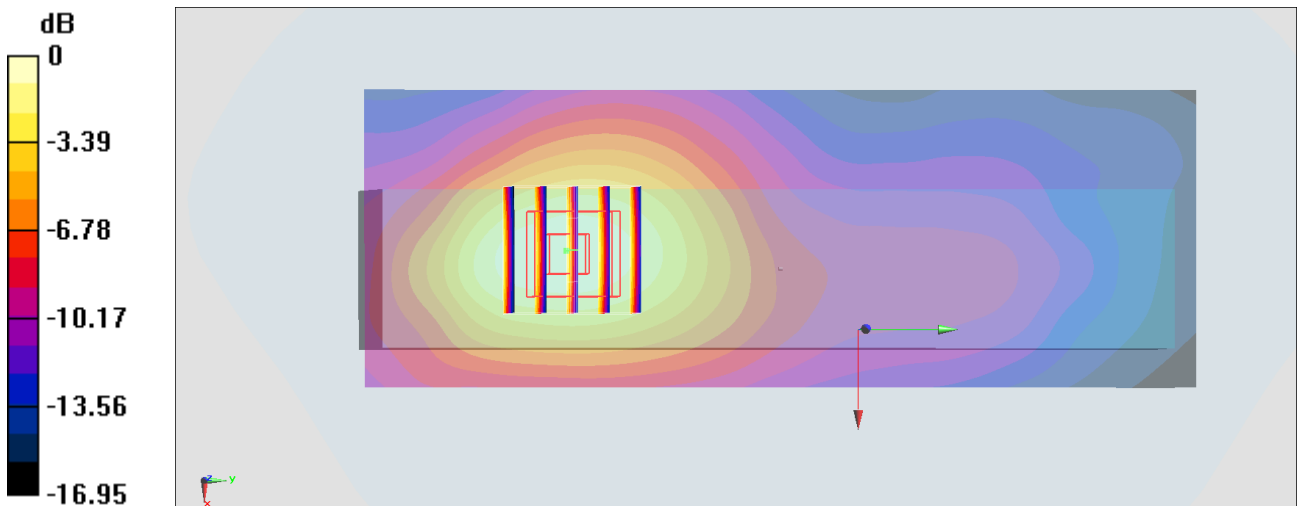
Zoom Scan (5x5x7)/Cube 0: Measurement grid: dx=8mm, dy=8mm, dz=5mm

Reference Value = 10.42 V/m; Power Drift = -0.16 dB

Peak SAR (extrapolated) = 1.13 W/kg

SAR(1 g) = 0.740 W/kg; SAR(10 g) = 0.458 W/kg

Maximum value of SAR (measured) = 0.879 W/kg



0 dB = 0.903 W/kg = -0.44 dBW/kg

#17_WCDMA V_RMC 12.2Kbps_Right Side_0mm_Ch4132;Holster 2+Trigger handle

Communication System: WCDMA; Frequency: 826.4 MHz; Duty Cycle: 1:1

Medium: HSL_850_200903 Medium parameters used : $f = 826.4$ MHz; $\sigma = 0.869$ S/m; $\epsilon_r = 42.056$; $\rho = 1000$ kg/m³

Ambient Temperature : 23.4 °C ; Liquid Temperature : 22.4 °C

DASY5 Configuration:

- Probe: ES3DV3 - SN3124; ConvF(6.28, 6.28, 6.28) @ 826.4 MHz; Calibrated: 2019/12/18
- Sensor-Surface: 3mm (Mechanical Surface Detection)
- Electronics: DAE4 Sn316; Calibrated: 2019/12/20
- Phantom: SAM_Right; Type: QD000P40CD; Serial: TP:1815
- Measurement SW: DASY52, Version 52.10 (4); SEMCAD X Version 14.6.14 (7483)

Area Scan (51x81x1): Interpolated grid: dx=1.500 mm, dy=1.500 mm

Maximum value of SAR (interpolated) = 0.368 W/kg

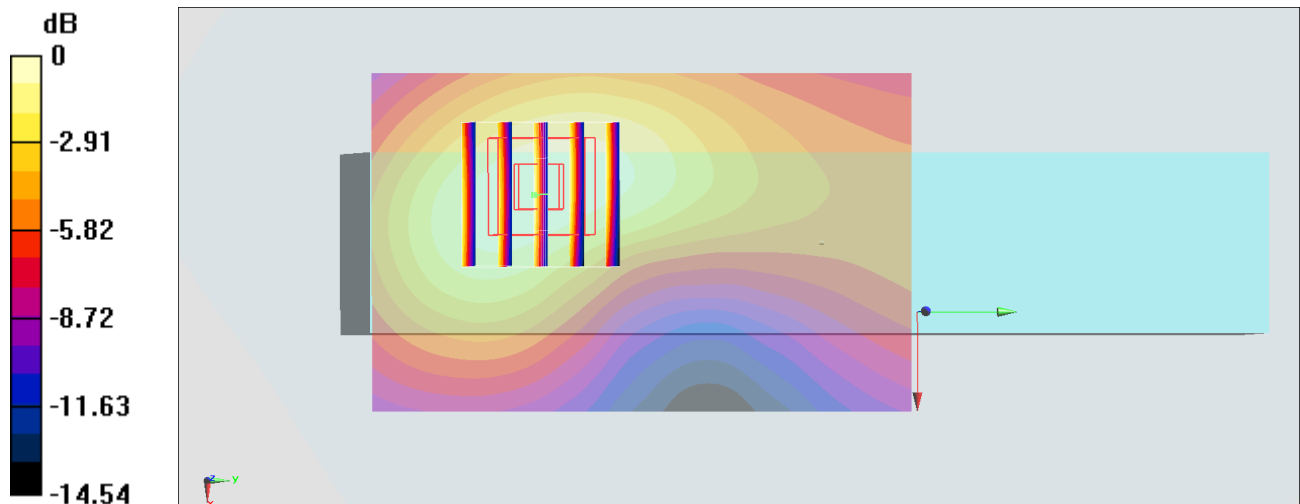
Zoom Scan (5x5x7)/Cube 0: Measurement grid: dx=8mm, dy=8mm, dz=5mm

Reference Value = 11.48 V/m; Power Drift = -0.02 dB

Peak SAR (extrapolated) = 0.473 W/kg

SAR(1 g) = 0.325 W/kg; SAR(10 g) = 0.211 W/kg

Maximum value of SAR (measured) = 0.381 W/kg



0 dB = 0.368 W/kg = -4.34 dBW/kg

#18_LTE Band 2_20M_QPSK_1_0_Right Side_0mm_Ch19100;Holster 2+Trigger handle

Communication System: LTE; Frequency: 1900 MHz; Duty Cycle: 1:1

Medium: HSL_1900_200901 Medium parameters used: $f = 1900$ MHz; $\sigma = 1.453$ S/m; $\epsilon_r = 39.427$; $\rho = 1000$ kg/m³

Ambient Temperature : 23.4 °C ; Liquid Temperature : 22.4 °C

DASY5 Configuration:

- Probe: ES3DV3 - SN3124; ConvF(5.31, 5.31, 5.31) @ 1900 MHz; Calibrated: 2019/12/18
- Sensor-Surface: 3mm (Mechanical Surface Detection)
- Electronics: DAE4 Sn316; Calibrated: 2019/12/20
- Phantom: SAM_Right; Type: QD000P40CD; Serial: TP:1815
- Measurement SW: DASY52, Version 52.10 (4); SEMCAD X Version 14.6.14 (7483)

Area Scan (51x141x1): Interpolated grid: dx=1.500 mm, dy=1.500 mm

Maximum value of SAR (interpolated) = 0.790 W/kg

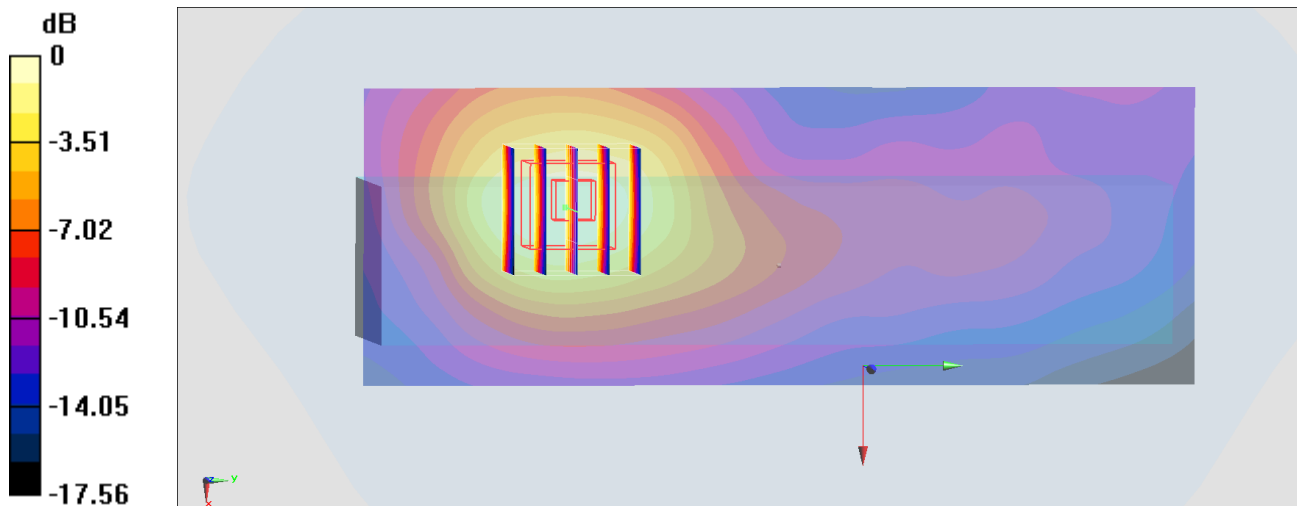
Zoom Scan (5x5x7)/Cube 0: Measurement grid: dx=8mm, dy=8mm, dz=5mm

Reference Value = 8.980 V/m; Power Drift = -0.07 dB

Peak SAR (extrapolated) = 1.00 W/kg

SAR(1 g) = 0.574 W/kg; SAR(10 g) = 0.345 W/kg

Maximum value of SAR (measured) = 0.686 W/kg



0 dB = 0.790 W/kg = -1.02 dBW/kg

#19_LTE Band 5_10M_QPSK_1_0_Right Side_10mm_Ch20525;Holster2+Trigger handle

Communication System: LTE ; Frequency: 836.5 MHz;Duty Cycle: 1:1

Medium: HSL_850_200817 Medium parameters used : $f = 836.5$ MHz; $\sigma = 0.872$ S/m; $\epsilon_r = 41.788$; $\rho = 1000$ kg/m³

Ambient Temperature : 23.4 °C ; Liquid Temperature : 22.4 °C

DASY5 Configuration:

- Probe: EX3DV4 - SN7306; ConvF(9.61, 9.61, 9.61) @ 836.5 MHz; Calibrated: 2020/7/24
- Sensor-Surface: 1.4mm (Mechanical Surface Detection)
- Electronics: DAE4 Sn1424; Calibrated: 2020/1/24
- Phantom: SAM_Right; Type: SAM; Serial: TP:1446
- Measurement SW: DASY52, Version 52.10 (4);SEMCAD X Version 14.6.14 (7483)

Area Scan (61x81x1): Interpolated grid: dx=1.500 mm, dy=1.500 mm

Maximum value of SAR (interpolated) = 0.634 W/kg

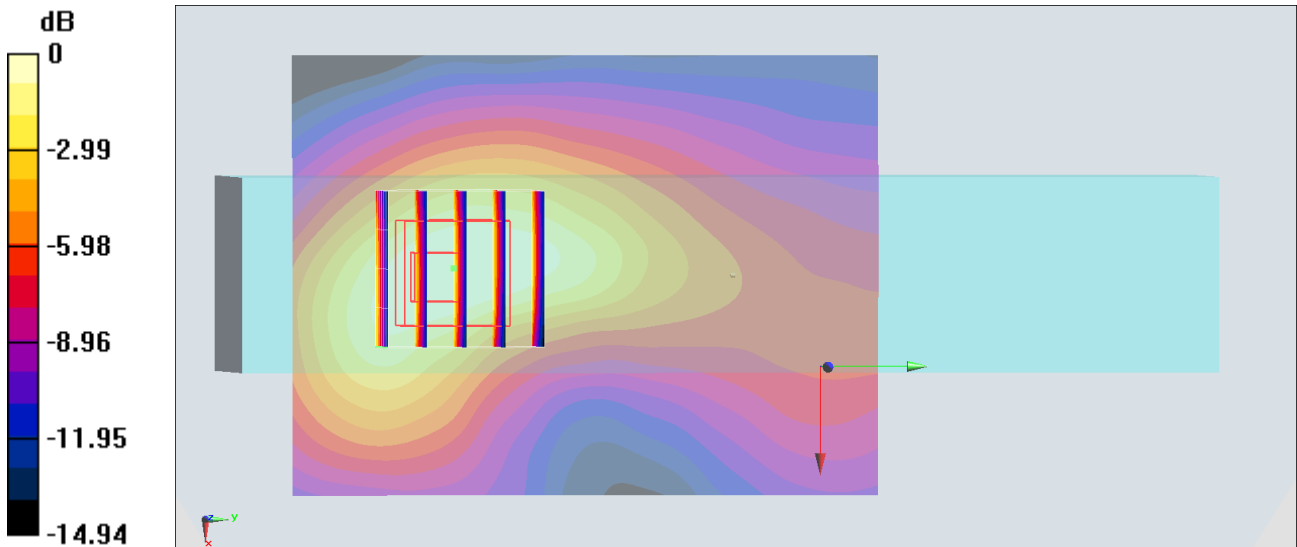
Zoom Scan (5x5x7)/Cube 0: Measurement grid: dx=8mm, dy=8mm, dz=5mm

Reference Value = 26.77 V/m; Power Drift = 0.07 dB

Peak SAR (extrapolated) = 0.712 W/kg

SAR(1 g) = 0.362 W/kg; SAR(10 g) = 0.211 W/kg

Maximum value of SAR (measured) = 0.558 W/kg



0 dB = 0.558 W/kg = -2.53 dBW/kg

#20_LTE Band 7_20M_QPSK_1_0_Right Side_10mm_Ch21350;Holster2+Trigger handle

Communication System: LTE ; Frequency: 2560 MHz;Duty Cycle: 1:1

Medium: HSL_2600_200818 Medium parameters used: $f = 2560$ MHz; $\sigma = 1.908$ S/m; $\epsilon_r = 39.445$; $\rho = 1000$ kg/m³

Ambient Temperature : 23.5 °C; Liquid Temperature : 22.5 °C

DASY5 Configuration:

- Probe: EX3DV4 - SN7306; ConvF(7.34, 7.34, 7.34) @ 2560 MHz; Calibrated: 2020/7/24
- Sensor-Surface: 1.4mm (Mechanical Surface Detection)
- Electronics: DAE4 Sn1424; Calibrated: 2020/1/24
- Phantom: SAM_Right; Type: SAM; Serial: TP:1446
- Measurement SW: DASY52, Version 52.10 (4);SEMCAD X Version 14.6.14 (7483)

Area Scan (81x101x1): Interpolated grid: dx=1.200 mm, dy=1.200 mm

Maximum value of SAR (interpolated) = 0.689 W/kg

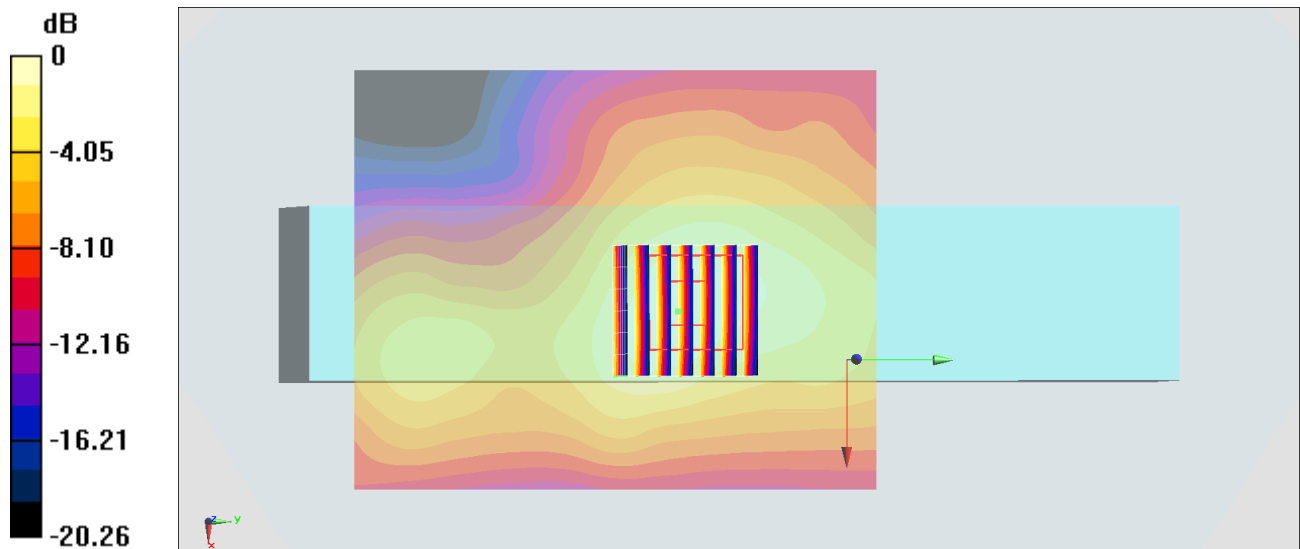
Zoom Scan (7x7x7)/Cube 0: Measurement grid: dx=5mm, dy=5mm, dz=5mm

Reference Value = 18.54 V/m; Power Drift = 0.19 dB

Peak SAR (extrapolated) = 0.869 W/kg

SAR(1 g) = 0.376 W/kg; SAR(10 g) = 0.199 W/kg

Maximum value of SAR (measured) = 0.651 W/kg



#21_LTE Band 12_10M_QPSK_1_0_Right Side_10mm_Ch23095;Holster2+Trigger handle

Communication System: LTE ; Frequency: 707.5 MHz;Duty Cycle: 1:1

Medium: HSL_750_200816 Medium parameters used : $f = 707.5$ MHz; $\sigma = 0.853$ S/m; $\epsilon_r = 43.165$; $\rho = 1000$ kg/m³

Ambient Temperature : 23.2 °C; Liquid Temperature : 22.2 °C

DASY5 Configuration:

- Probe: EX3DV4 - SN7306; ConvF(9.92, 9.92, 9.92) @ 707.5 MHz; Calibrated: 2020/7/24
- Sensor-Surface: 1.4mm (Mechanical Surface Detection)
- Electronics: DAE4 Sn1424; Calibrated: 2020/1/24
- Phantom: SAM_Right; Type: SAM; Serial: TP:1446
- Measurement SW: DASY52, Version 52.10 (4);SEMCAD X Version 14.6.14 (7483)

Area Scan (61x81x1): Interpolated grid: dx=1.500 mm, dy=1.500 mm

Maximum value of SAR (interpolated) = 0.595 W/kg

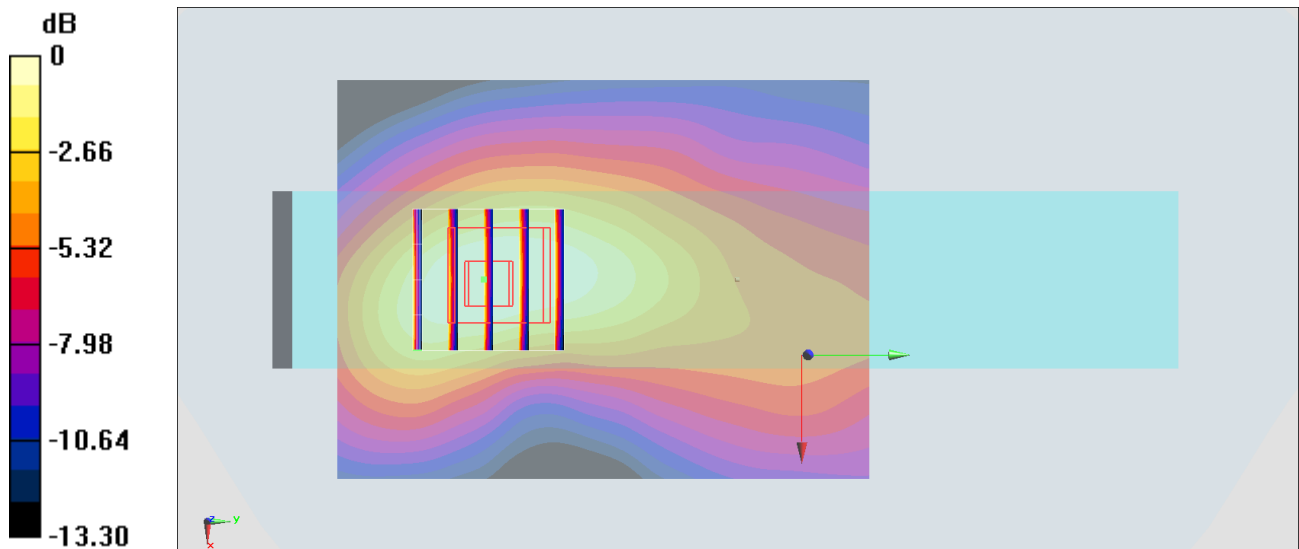
Zoom Scan (5x5x7)/Cube 0: Measurement grid: dx=8mm, dy=8mm, dz=5mm

Reference Value = 27.09 V/m; Power Drift = -0.07 dB

Peak SAR (extrapolated) = 0.646 W/kg

SAR(1 g) = 0.328 W/kg; SAR(10 g) = 0.197 W/kg

Maximum value of SAR (measured) = 0.496 W/kg



0 dB = 0.496 W/kg = -3.05 dBW/kg

#22_LTE Band 13_10M_QPSK_1_0_Right Side_0mm_Ch23230;Holster 2+Trigger handle

Communication System: LTE; Frequency: 782 MHz; Duty Cycle: 1:1

Medium: HSL_750_200902 Medium parameters used: $f = 782$ MHz; $\sigma = 0.91$ S/m; $\epsilon_r = 42.372$; $\rho = 1000$ kg/m³

Ambient Temperature : 23.4 °C ; Liquid Temperature : 22.4 °C

DASY5 Configuration:

- Probe: ES3DV3 - SN3124; ConvF(6.47, 6.47, 6.47) @ 782 MHz; Calibrated: 2019/12/18
- Sensor-Surface: 3mm (Mechanical Surface Detection)
- Electronics: DAE4 Sn316; Calibrated: 2019/12/20
- Phantom: SAM_Right; Type: QD000P40CD; Serial: TP:1815
- Measurement SW: DASY52, Version 52.10 (4); SEMCAD X Version 14.6.14 (7483)

Area Scan (51x71x1): Interpolated grid: dx=1.500 mm, dy=1.500 mm

Maximum value of SAR (interpolated) = 0.164 W/kg

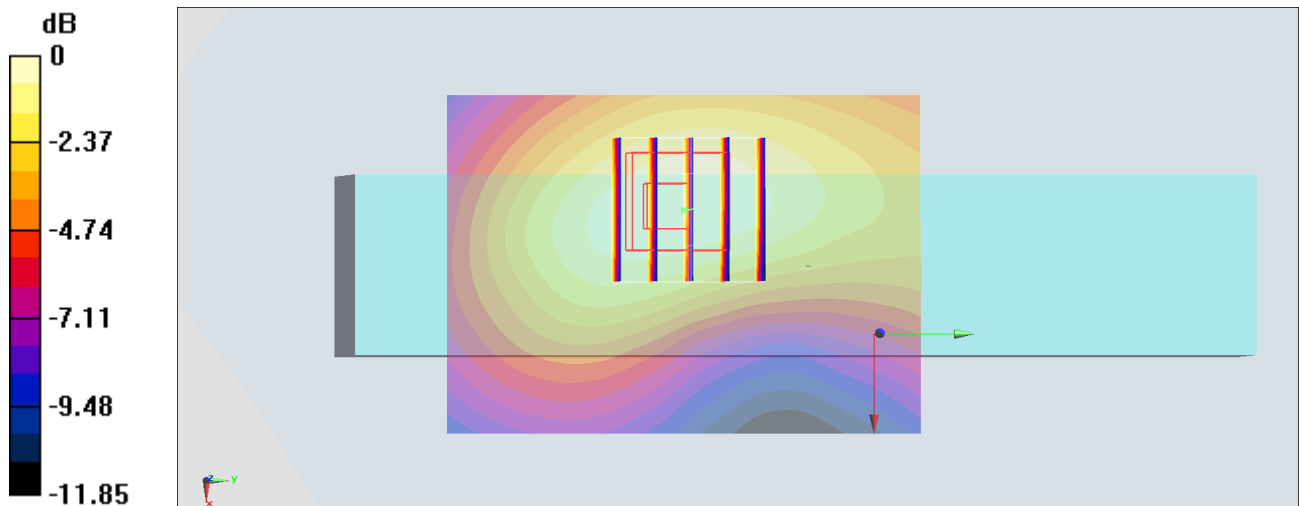
Zoom Scan (5x5x7)/Cube 0: Measurement grid: dx=8mm, dy=8mm, dz=5mm

Reference Value = 9.943 V/m; Power Drift = -0.01 dB

Peak SAR (extrapolated) = 0.198 W/kg

SAR(1 g) = 0.145 W/kg; SAR(10 g) = 0.100 W/kg

Maximum value of SAR (measured) = 0.164 W/kg



0 dB = 0.164 W/kg = -7.85 dBW/kg

#23_LTE Band 14_10M_QPSK_1_0_Right Side_0mm_Ch23330;Holster 2+Trigger handle

Communication System: LTE; Frequency: 793 MHz; Duty Cycle: 1:1

Medium: HSL_750_200902 Medium parameters used: $f = 793$ MHz; $\sigma = 0.927$ S/m; $\epsilon_r = 42.115$; $\rho = 1000$ kg/m³

Ambient Temperature : 23.4 °C ; Liquid Temperature : 22.4 °C

DASY5 Configuration:

- Probe: ES3DV3 - SN3124; ConvF(6.47, 6.47, 6.47) @ 793 MHz; Calibrated: 2019/12/18
- Sensor-Surface: 3mm (Mechanical Surface Detection)
- Electronics: DAE4 Sn316; Calibrated: 2019/12/20
- Phantom: SAM_Right; Type: QD000P40CD; Serial: TP:1815
- Measurement SW: DASY52, Version 52.10 (4); SEMCAD X Version 14.6.14 (7483)

Area Scan (51x81x1): Interpolated grid: dx=1.500 mm, dy=1.500 mm

Maximum value of SAR (interpolated) = 0.319 W/kg

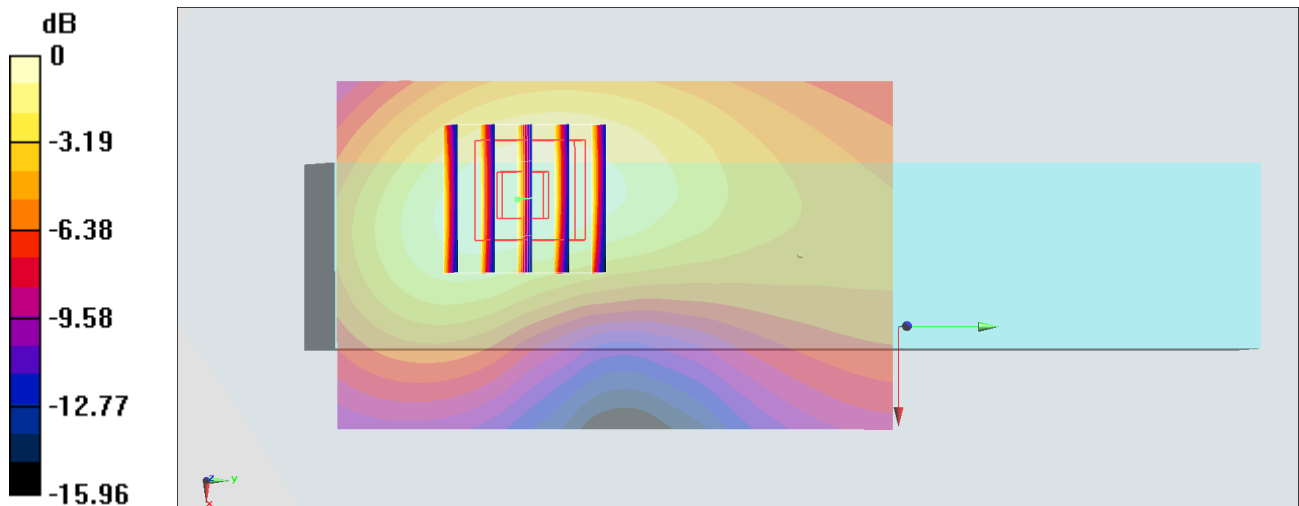
Zoom Scan (5x5x7)/Cube 0: Measurement grid: dx=8mm, dy=8mm, dz=5mm

Reference Value = 11.37 V/m; Power Drift = -0.07 dB

Peak SAR (extrapolated) = 0.394 W/kg

SAR(1 g) = 0.279 W/kg; SAR(10 g) = 0.186 W/kg

Maximum value of SAR (measured) = 0.327 W/kg



0 dB = 0.319 W/kg = -4.96 dBW/kg

#24_LTE Band 66_20M_QPSK_1_0_Right Side_0mm_Ch132572;Holster 2+Trigger handle

Communication System: LTE; Frequency: 1770 MHz;Duty Cycle: 1:1

Medium: HSL_1750_200901 Medium parameters used: $f = 1770$ MHz; $\sigma = 1.377$ S/m; $\epsilon_r = 40.011$; $\rho = 1000$ kg/m³

Ambient Temperature : 23.4 °C ; Liquid Temperature : 22.4 °C

DASY5 Configuration:

- Probe: ES3DV3 - SN3124;ConvF(5.53, 5.53, 5.53) @ 1770 MHz;Calibrated: 2019/12/18
- Sensor-Surface: 3mm (Mechanical Surface Detection)
- Electronics: DAE4 Sn316; Calibrated: 2019/12/20
- Phantom: SAM_Right; Type: QD000P40CD; Serial: TP:1815
- Measurement SW: DASY52, Version 52.10 (4);SEMCAD X Version 14.6.14 (7483)

Area Scan (51x141x1): Interpolated grid: dx=1.500 mm, dy=1.500 mm

Maximum value of SAR (interpolated) = 0.991 W/kg

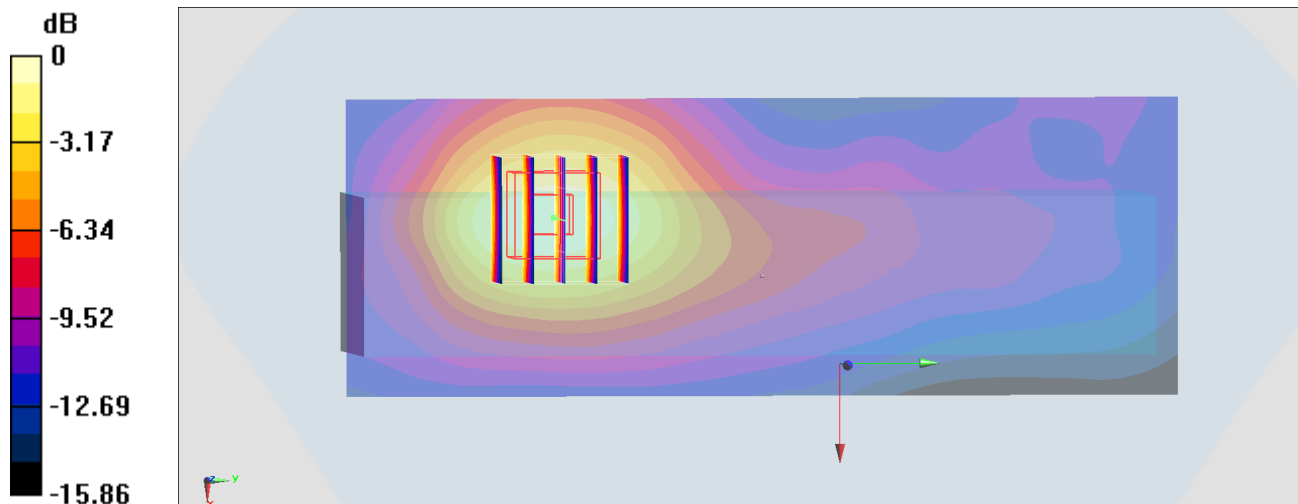
Zoom Scan (5x5x7)/Cube 0: Measurement grid: dx=8mm, dy=8mm, dz=5mm

Reference Value = 10.98 V/m; Power Drift = 0.07 dB

Peak SAR (extrapolated) = 1.25 W/kg

SAR(1 g) = 0.731 W/kg; SAR(10 g) = 0.437 W/kg

Maximum value of SAR (measured) = 0.877 W/kg



0 dB = 0.991 W/kg = -0.04 dBW/kg

#25_WLAN2.4GHz_802.11b 1Mbps_Left Side_0mm_Ch11;Holster 2+Trigger handle

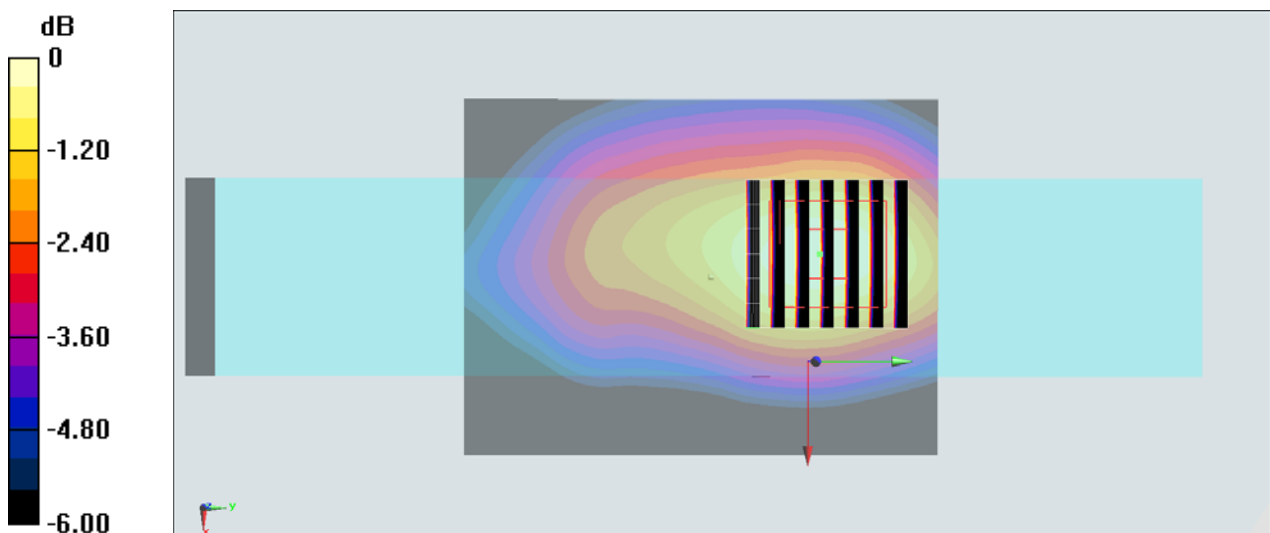
Communication System: 802.11b ; Frequency: 2462 MHz;Duty Cycle: 1:1.007
Medium: HSL_2450_200905 Medium parameters used: $f = 2462$ MHz; $\sigma = 1.833$ S/m; $\epsilon_r = 38.673$;
 $\rho = 1000$ kg/m³
Ambient Temperature : 23.6 °C; Liquid Temperature : 22.6 °C

DASY5 Configuration

- Probe: ES3DV3 - SN3124;ConvF(4.64, 4.64, 4.64) @ 2462 MHz;Calibrated: 2019/12/18
- Sensor-Surface: 3mm (Mechanical Surface Detection)
- Electronics: DAE4 Sn316; Calibrated: 2019/12/20
- Phantom: SAM_Right; Type: QD000P40CD; Serial: TP:1815
- Measurement SW: F CU [74."Xgtukq"7402"%6=UGO ECF "Z"Xgtukq"36006"%96: 5+

Area Scan (61x81x1): Interpolated grid: dx=1.200 mm, dy=1.200 mm
Maximum value of SAR (interpolated) = 0.221 W/kg

Zoom Scan (7x7x7)/Cube 0: Measurement grid: dx=5mm, dy=5mm, dz=5mm
Reference Value = 9.909 V/m; Power Drift = -0.03 dB
Peak SAR (extrapolated) = 0.318 W/kg
SAR(1 g) = 0.183 W/kg; SAR(10 g) = 0.107 W/kg
Maximum value of SAR (measured) = 0.222 W/kg



0 dB = 0.222 W/kg = -6.54 dBW/kg

#26_WLAN5GHz_802.11n-HT40 MCS0_Left Side_0mm_Ch54;Holster2+Trigger handle

Communication System: 802.11n; Frequency: 5270 MHz; Duty Cycle: 1:1.037

Medium: HSL_5G_200905 Medium parameters used: $f = 5270$ MHz; $\sigma = 4.673$ S/m; $\epsilon_r = 36.828$; $\rho = 1000$ kg/m³

Ambient Temperature : 23.4 °C; Liquid Temperature : 22.4 °C

DASY5 Configuration

- Probe: EX3DV4 - SN7306; ConvF(5.36, 5.36, 5.36) @ 5270 MHz; Calibrated: 2020/7/24
- Sensor-Surface: 1.4mm (Mechanical Surface Detection)
- Electronics: DAE3 Sn495; Calibrated: 2020/7/21
- Phantom: SAM LEFT; Type: QD000P40CD; Serial: TP:1718
- Measurement SW: DASY52, Version 52.10 (4); SEMCAD X Version 14.6.14 (7483)

Area Scan (81x101x1): Interpolated grid: dx=1.000 mm, dy=1.000 mm

Maximum value of SAR (interpolated) = 1.94 W/kg

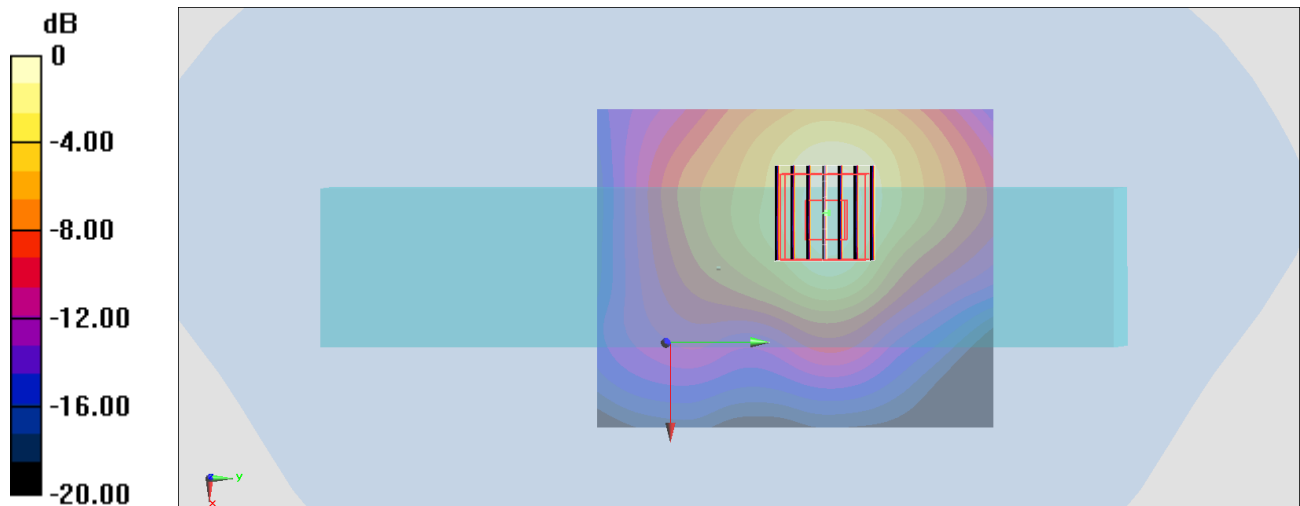
Zoom Scan (7x7x7)/Cube 0: Measurement grid: dx=4mm, dy=4mm, dz=1.4mm

Reference Value = 22.93 V/m; Power Drift = -0.15 dB

Peak SAR (extrapolated) = 3.39 W/kg

SAR(1 g) = 0.984 W/kg; SAR(10 g) = 0.431 W/kg

Maximum value of SAR (measured) = 2.20 W/kg



0 dB = 2.20 W/kg = 3.42 dBW/kg

#27_WLAN5GHz_802.11ac-VHT80 MCS0_Left Side_0mm_Ch138;Holster2+Trigger handle

Communication System: 802.11ac; Frequency: 5690 MHz;Duty Cycle: 1:1.084

Medium: HSL_5G_200905 Medium parameters used : $f = 5690$ MHz; $\sigma = 5.023$ S/m; $\epsilon_r = 36.142$; $\rho = 1000$ kg/m³

Ambient Temperature : 23.4 °C; Liquid Temperature : 22.4 °C

DASY5 Configuration

- Probe: EX3DV4 - SN7306; ConvF(4.91, 4.91, 4.91) @ 5690 MHz; Calibrated: 2020/7/24
- Sensor-Surface: 1.4mm (Mechanical Surface Detection)
- Electronics: DAE3 Sn495; Calibrated: 2020/7/21
- Phantom: SAM LEFT; Type: QD000P40CD; Serial: TP:1718
- Measurement SW: DASY52, Version 52.10 (4); SEMCAD X Version 14.6.14 (7483)

Area Scan (81x101x1): Interpolated grid: dx=1.000 mm, dy=1.000 mm

Maximum value of SAR (interpolated) = 2.31 W/kg

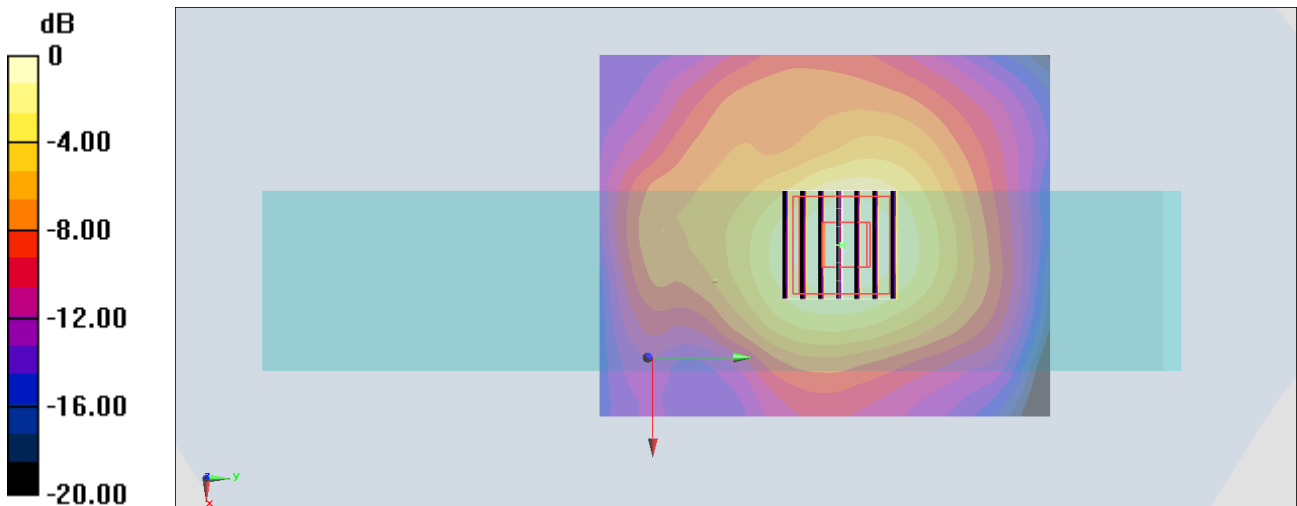
Zoom Scan (7x7x7)/Cube 0: Measurement grid: dx=4mm, dy=4mm, dz=1.4mm

Reference Value = 21.91 V/m; Power Drift = -0.09 dB

Peak SAR (extrapolated) = 3.79 W/kg

SAR(1 g) = 1.03 W/kg; SAR(10 g) = 0.425 W/kg

Maximum value of SAR (measured) = 2.30 W/kg



0 dB = 2.30 W/kg = 3.62 dBW/kg

#28_WLAN5GHz_802.11ac-VHT80 MCS0_Left Side_0mm_Ch155;Holster2+Trigger handle

Communication System: 802.11ac; Frequency: 5775 MHz; Duty Cycle: 1:1.084

Medium: HSL_5G_200905 Medium parameters used: $f = 5775$ MHz; $\sigma = 5.158$ S/m; $\epsilon_r = 35.79$; $\rho = 1000$ kg/m³

Ambient Temperature : 23.4 °C; Liquid Temperature : 22.4 °C

DASY5 Configuration

- Probe: EX3DV4 - SN7306; ConvF(4.91, 4.91, 4.91) @ 5775 MHz; Calibrated: 2020/7/24
- Sensor-Surface: 1.4mm (Mechanical Surface Detection)
- Electronics: DAE3 Sn495; Calibrated: 2020/7/21
- Phantom: SAM LEFT; Type: QD000P40CD; Serial: TP:1718
- Measurement SW: DASY52, Version 52.10 (4); SEMCAD X Version 14.6.14 (7483)

Area Scan (81x101x1): Interpolated grid: dx=1.000 mm, dy=1.000 mm

Maximum value of SAR (interpolated) = 1.43 W/kg

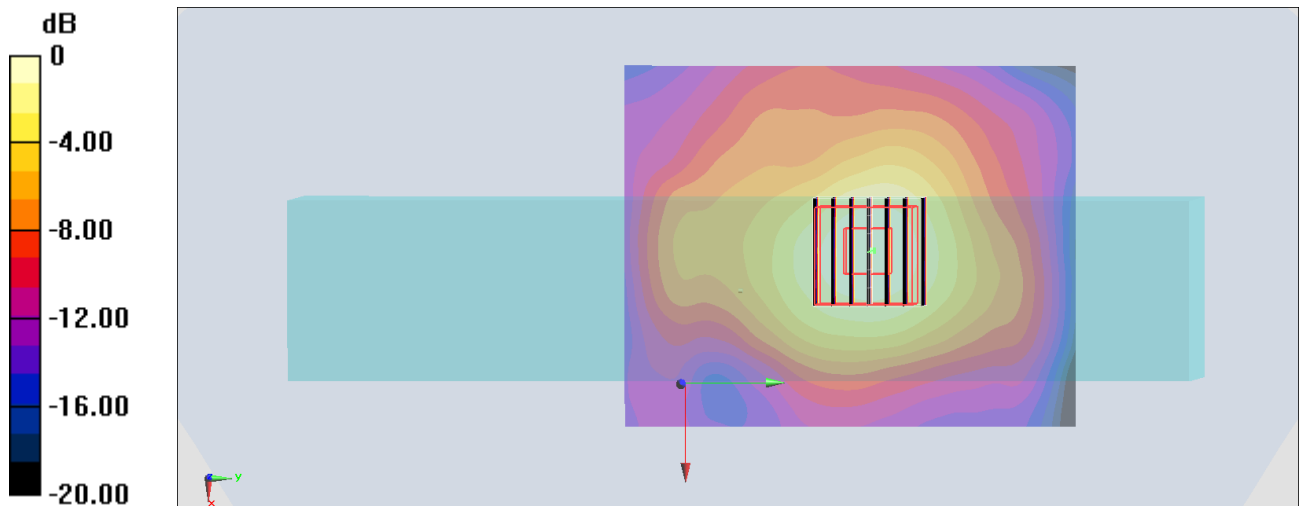
Zoom Scan (7x7x7)/Cube 0: Measurement grid: dx=4mm, dy=4mm, dz=1.4mm

Reference Value = 19.43 V/m; Power Drift = -0.17 dB

Peak SAR (extrapolated) = 2.39 W/kg

SAR(1 g) = 0.638 W/kg; SAR(10 g) = 0.260 W/kg

Maximum value of SAR (measured) = 1.42 W/kg



0 dB = 1.42 W/kg = 1.52 dBW/kg

#29_Bluetooth_LE-1Mbps_Left Side_0mm_Ch39;Holster 2+Trigger handle

Communication System: Bluetooth; Frequency: 2480 MHz; Duty Cycle: 1:1.827

Medium: HSL_2450_200905 Medium parameters used: $f = 2480$ MHz; $\sigma = 1.853$ S/m; $\epsilon_r = 38.625$;

$\rho = 1000$ kg/m³

Ambient Temperature : 23.6 °C ; Liquid Temperature : 22.6 °C

DASY5 Configuration

- Probe: ES3DV3 - SN3124; ConvF(4.64, 4.64, 4.64) @ 2480 MHz; Calibrated: 2019/12/18

- Sensor-Surface: 3mm (Mechanical Surface Detection)

- Electronics: DAE4 Sn316; Calibrated: 2019/12/20

- Phantom: SAM_Right; Type: QD000P40CD; Serial: TP:1815

- Measurement SW: DASY52, Version 52.10 (4); SEMCAD X Version 14.6.14 (7483)

Area Scan (61x81x1): Interpolated grid: dx=1.200 mm, dy=1.200 mm

Maximum value of SAR (interpolated) = 0.00244 W/kg

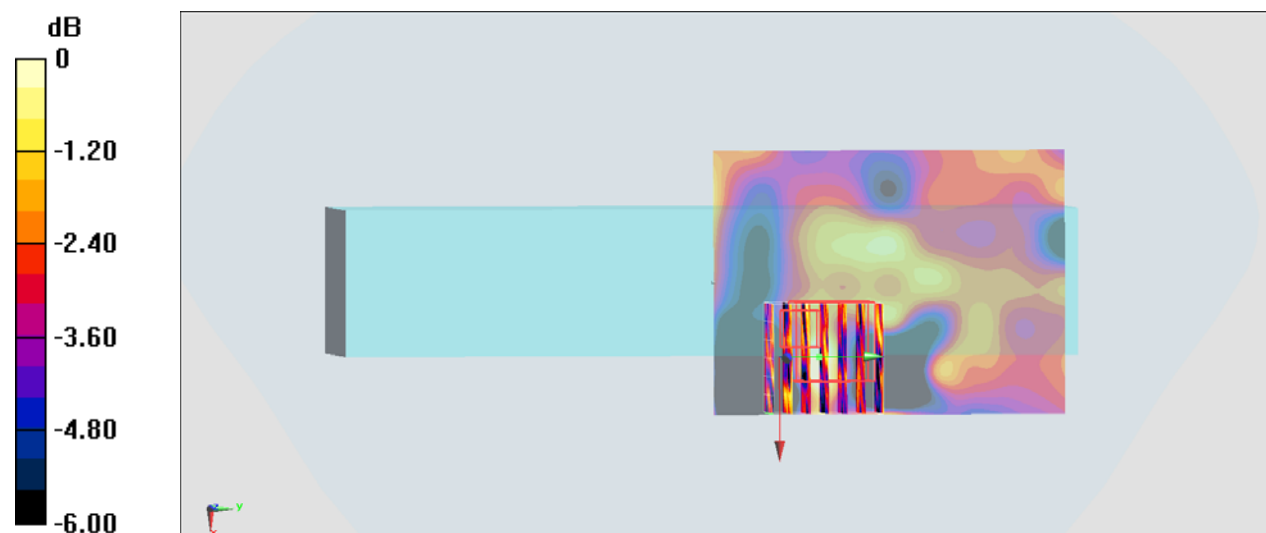
Zoom Scan (7x7x7)/Cube 0: Measurement grid: dx=5mm, dy=5mm, dz=5mm

Reference Value = 0.7090 V/m; Power Drift = 0.04 dB

Peak SAR (extrapolated) = 0.00212 W/kg

SAR(1 g) = 0.0016 W/kg; SAR(10 g) = 0.000989 W/kg

Maximum value of SAR (measured) = 0.00202 W/kg



0 dB = 0.00202 W/kg = -26.95 dBW/kg

#30_WCDMA II_RMC 12.2Kbps_Back_0mm_Ch9400

Communication System: WCDMA; Frequency: 1880 MHz; Duty Cycle: 1:1

Medium: HSL_1900_200901 Medium parameters used: $f = 1880$ MHz; $\sigma = 1.427$ S/m; $\epsilon_r = 39.515$; $\rho = 1000$ kg/m³

Ambient Temperature : 23.4 °C ; Liquid Temperature : 22.4 °C

DASY5 Configuration:

- Probe: ES3DV3 - SN3124; ConvF(5.31, 5.31, 5.31) @ 1880 MHz; Calibrated: 2019/12/18
- Sensor-Surface: 3mm (Mechanical Surface Detection)
- Electronics: DAE4 Sn316; Calibrated: 2019/12/20
- Phantom: SAM_Right; Type: QD000P40CD; Serial: TP:1815
- Measurement SW: DASY52, Version 52.10 (4); SEMCAD X Version 14.6.14 (7483)

Area Scan (61x141x1): Interpolated grid: dx=1.500 mm, dy=1.500 mm

Maximum value of SAR (interpolated) = 1.59 W/kg

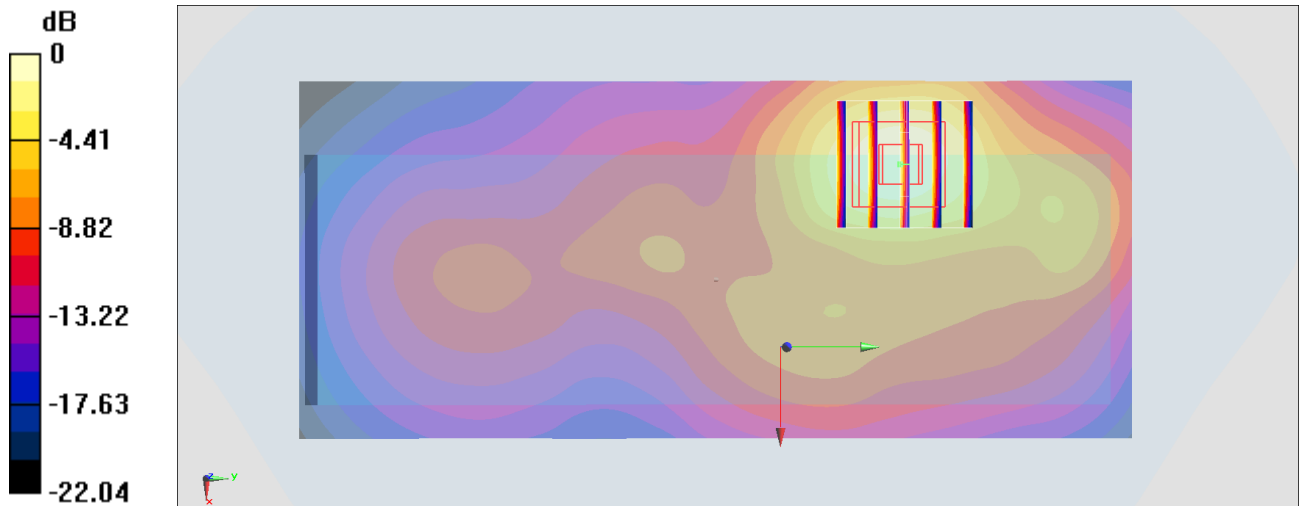
Zoom Scan (5x5x7)/Cube 0: Measurement grid: dx=8mm, dy=8mm, dz=5mm

Reference Value = 11.80 V/m; Power Drift = 0.02 dB

Peak SAR (extrapolated) = 2.59 W/kg

SAR(1 g) = 1.3 W/kg; SAR(10 g) = 0.702 W/kg

Maximum value of SAR (measured) = 1.63 W/kg



0 dB = 1.59 W/kg = 2.01 dBW/kg

#31_WCDMA IV_RMC 12.2Kbps_Back_0mm_Ch1413

Communication System: WCDMA; Frequency: 1732.6 MHz; Duty Cycle: 1:1

Medium: HSL_1750_200901 Medium parameters used: $f = 1733 \text{ MHz}$; $\sigma = 1.343 \text{ S/m}$; $\epsilon_r = 40.119$; $\rho = 1000 \text{ kg/m}^3$

Ambient Temperature : $23.4 \text{ }^\circ\text{C}$; Liquid Temperature : $22.4 \text{ }^\circ\text{C}$

DASY5 Configuration:

- Probe: ES3DV3 - SN3124; ConvF(5.53, 5.53, 5.53) @ 1732.6 MHz; Calibrated: 2019/12/18
- Sensor-Surface: 3mm (Mechanical Surface Detection)
- Electronics: DAE4 Sn316; Calibrated: 2019/12/20
- Phantom: SAM_Right; Type: QD000P40CD; Serial: TP:1815
- Measurement SW: DASY52, Version 52.10 (4); SEMCAD X Version 14.6.14 (7483)

Area Scan (61x141x1): Interpolated grid: $dx=1.500 \text{ mm}$, $dy=1.500 \text{ mm}$

Maximum value of SAR (interpolated) = 0.956 W/kg

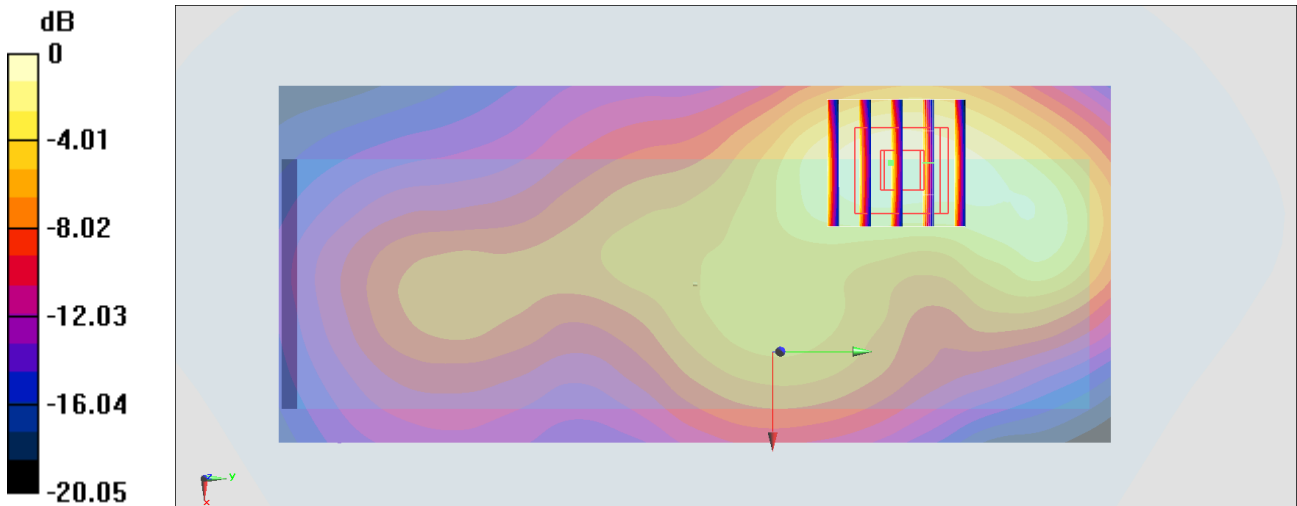
Zoom Scan (5x5x7)/Cube 0: Measurement grid: $dx=8\text{mm}$, $dy=8\text{mm}$, $dz=5\text{mm}$

Reference Value = 13.96 V/m ; Power Drift = 0.17 dB

Peak SAR (extrapolated) = 1.48 W/kg

SAR(1 g) = 0.796 W/kg ; SAR(10 g) = 0.457 W/kg

Maximum value of SAR (measured) = 0.953 W/kg



0 dB = 0.956 W/kg = -0.20 dBW/kg

#32_WCDMA V_RMC 12.2Kbps_Back_0mm_Ch4132

Communication System: WCDMA; Frequency: 826.4 MHz; Duty Cycle: 1:1

Medium: HSL_850_200903 Medium parameters used : $f = 826.4$ MHz; $\sigma = 0.869$ S/m; $\epsilon_r = 42.056$; $\rho = 1000$ kg/m³

Ambient Temperature : 23.4 °C ; Liquid Temperature : 22.4 °C

DASY5 Configuration:

- Probe: ES3DV3 - SN3124; ConvF(6.28, 6.28, 6.28) @ 826.4 MHz; Calibrated: 2019/12/18
- Sensor-Surface: 3mm (Mechanical Surface Detection)
- Electronics: DAE4 Sn316; Calibrated: 2019/12/20
- Phantom: SAM_Right; Type: QD000P40CD; Serial: TP:1815
- Measurement SW: DASY52, Version 52.10 (4); SEMCAD X Version 14.6.14 (7483)

Area Scan (61x81x1): Interpolated grid: dx=1.500 mm, dy=1.500 mm

Maximum value of SAR (interpolated) = 1.59 W/kg

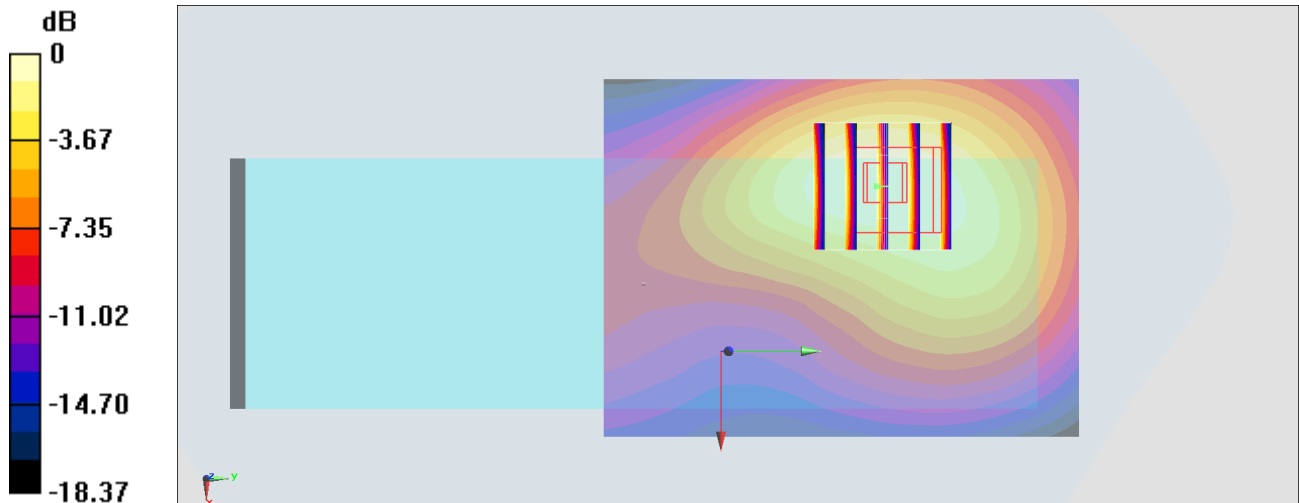
Zoom Scan (5x5x7)/Cube 0: Measurement grid: dx=8mm, dy=8mm, dz=5mm

Reference Value = 16.01 V/m; Power Drift = -0.05 dB

Peak SAR (extrapolated) = 2.07 W/kg

SAR(1 g) = 1.39 W/kg; SAR(10 g) = 0.905 W/kg

Maximum value of SAR (measured) = 1.62 W/kg



0 dB = 1.59 W/kg = 2.01 dBW/kg

#33_LTE Band 2_20M_QPSK_1_0_Back_0mm_Ch19100

Communication System: LTE; Frequency: 1900 MHz; Duty Cycle: 1:1

Medium: HSL_1900_200901 Medium parameters used: $f = 1900$ MHz; $\sigma = 1.453$ S/m; $\epsilon_r = 39.427$; $\rho = 1000$ kg/m³

Ambient Temperature : 23.4 °C ; Liquid Temperature : 22.4 °C

DASY5 Configuration:

- Probe: ES3DV3 - SN3124; ConvF(5.31, 5.31, 5.31) @ 1900 MHz; Calibrated: 2019/12/18
- Sensor-Surface: 3mm (Mechanical Surface Detection)
- Electronics: DAE4 Sn316; Calibrated: 2019/12/20
- Phantom: SAM_Right; Type: QD000P40CD; Serial: TP:1815
- Measurement SW: DASY52, Version 52.10 (4); SEMCAD X Version 14.6.14 (7483)

Area Scan (61x141x1): Interpolated grid: dx=1.500 mm, dy=1.500 mm

Maximum value of SAR (interpolated) = 1.84 W/kg

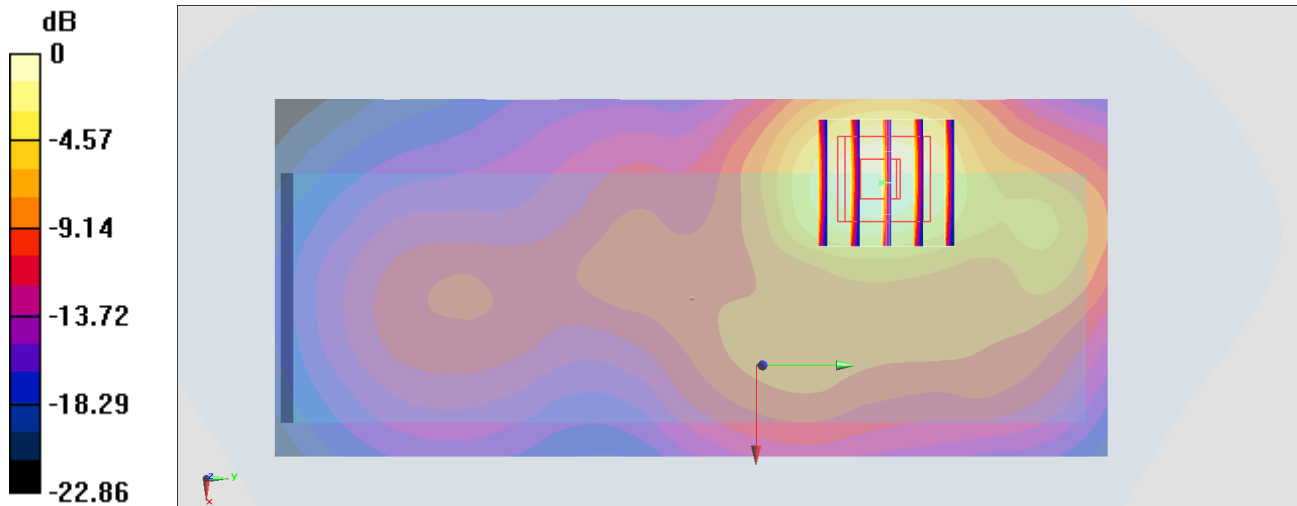
Zoom Scan (5x5x7)/Cube 0: Measurement grid: dx=8mm, dy=8mm, dz=5mm

Reference Value = 12.51 V/m; Power Drift = -0.01 dB

Peak SAR (extrapolated) = 2.85 W/kg

SAR(1 g) = 1.46 W/kg; SAR(10 g) = 0.785 W/kg

Maximum value of SAR (measured) = 1.82 W/kg



0 dB = 1.84 W/kg = 2.65 dBW/kg

#34_LTE Band 5_10M_QPSK_1_0_Back_0mm_Ch20525

Communication System: LTE ; Frequency: 836.5 MHz;Duty Cycle: 1:1

Medium: HSL_850_200817 Medium parameters used : $f = 836.5$ MHz; $\sigma = 0.872$ S/m; $\epsilon_r = 41.788$; $\rho = 1000$ kg/m³

Ambient Temperature : 23.4 °C ; Liquid Temperature : 22.4 °C

DASY5 Configuration:

- Probe: EX3DV4 - SN7306; ConvF(9.61, 9.61, 9.61) @ 836.5 MHz; Calibrated: 2020/7/24
- Sensor-Surface: 1.4mm (Mechanical Surface Detection)
- Electronics: DAE4 Sn1424; Calibrated: 2020/1/24
- Phantom: SAM_Right; Type: SAM; Serial: TP:1446
- Measurement SW: DASY52, Version 52.10 (4);SEMCAD X Version 14.6.14 (7483)

Area Scan (71x81x1): Interpolated grid: dx=1.500 mm, dy=1.500 mm

Maximum value of SAR (interpolated) = 1.56 W/kg

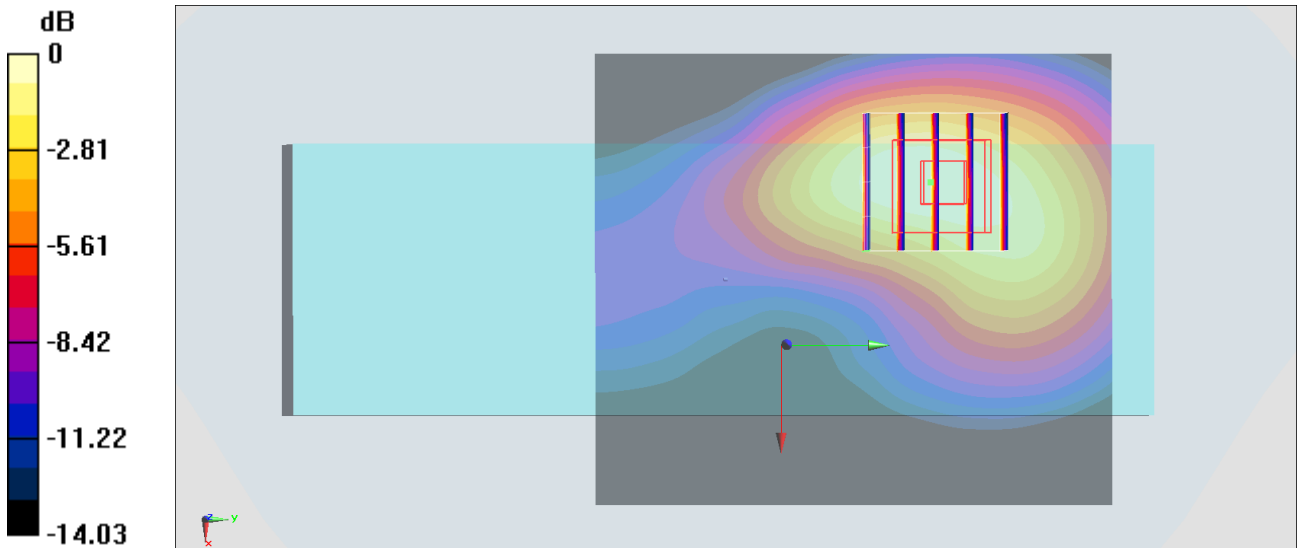
Zoom Scan (5x5x7)/Cube 0: Measurement grid: dx=8mm, dy=8mm, dz=5mm

Reference Value = 36.30 V/m; Power Drift = 0.01 dB

Peak SAR (extrapolated) = 1.85 W/kg

SAR(1 g) = 0.954 W/kg; SAR(10 g) = 0.554 W/kg

Maximum value of SAR (measured) = 1.48 W/kg



0 dB = 1.48 W/kg = 1.70 dBW/kg

#35_LTE Band 7_20M_QPSK_1_0_Back_0mm_Ch21100

Communication System: LTE ; Frequency: 2535 MHz;Duty Cycle: 1:1

Medium: HSL_2600_200818 Medium parameters used : $f = 2535$ MHz; $\sigma = 1.895$ S/m; $\epsilon_r = 39.398$; $\rho = 1000$ kg/m³

Ambient Temperature : 23.5 °C ; Liquid Temperature : 22.5 °C

DASY5 Configuration:

- Probe: EX3DV4 - SN7306; ConvF(7.34, 7.34, 7.34) @ 2535 MHz; Calibrated: 2020/7/24
- Sensor-Surface: 1.4mm (Mechanical Surface Detection)
- Electronics: DAE4 Sn1424; Calibrated: 2020/1/24
- Phantom: SAM_Right; Type: SAM; Serial: TP:1446
- Measurement SW: DASY52, Version 52.10 (4);SEMCAD X Version 14.6.14 (7483)

Area Scan (91x101x1): Interpolated grid: dx=1.200 mm, dy=1.200 mm

Maximum value of SAR (interpolated) = 0.548 W/kg

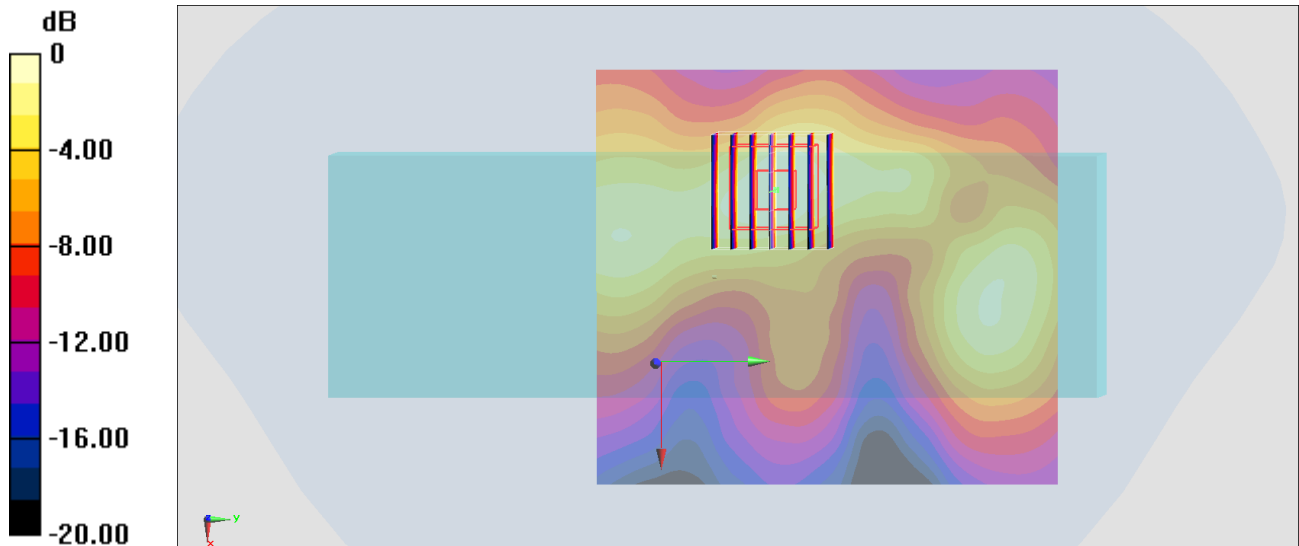
Zoom Scan (7x7x7)/Cube 0: Measurement grid: dx=5mm, dy=5mm, dz=5mm

Reference Value = 13.90 V/m; Power Drift = 0.05 dB

Peak SAR (extrapolated) = 0.662 W/kg

SAR(1 g) = 0.275 W/kg; SAR(10 g) = 0.133 W/kg

Maximum value of SAR (measured) = 0.483 W/kg



0 dB = 0.483 W/kg = -3.16 dBW/kg

#36_LTE Band 12_10M_QPSK_1_0_Back_0mm_Ch23095

Communication System: LTE ; Frequency: 707.5 MHz; Duty Cycle: 1:1

Medium: HSL_750_200816 Medium parameters used : $f = 707.5$ MHz; $\sigma = 0.853$ S/m; $\epsilon_r = 43.165$; $\rho = 1000$ kg/m³

Ambient Temperature : 23.2 °C ; Liquid Temperature : 22.2 °C

DASY5 Configuration:

- Probe: EX3DV4 - SN7306; ConvF(9.92, 9.92, 9.92) @ 707.5 MHz; Calibrated: 2020/7/24
- Sensor-Surface: 1.4mm (Mechanical Surface Detection)
- Electronics: DAE4 Sn1424; Calibrated: 2020/1/24
- Phantom: SAM_Right; Type: SAM; Serial: TP:1446
- Measurement SW: DASY52, Version 52.10 (4); SEMCAD X Version 14.6.14 (7483)

Area Scan (71x81x1): Interpolated grid: dx=1.500 mm, dy=1.500 mm

Maximum value of SAR (interpolated) = 0.678 W/kg

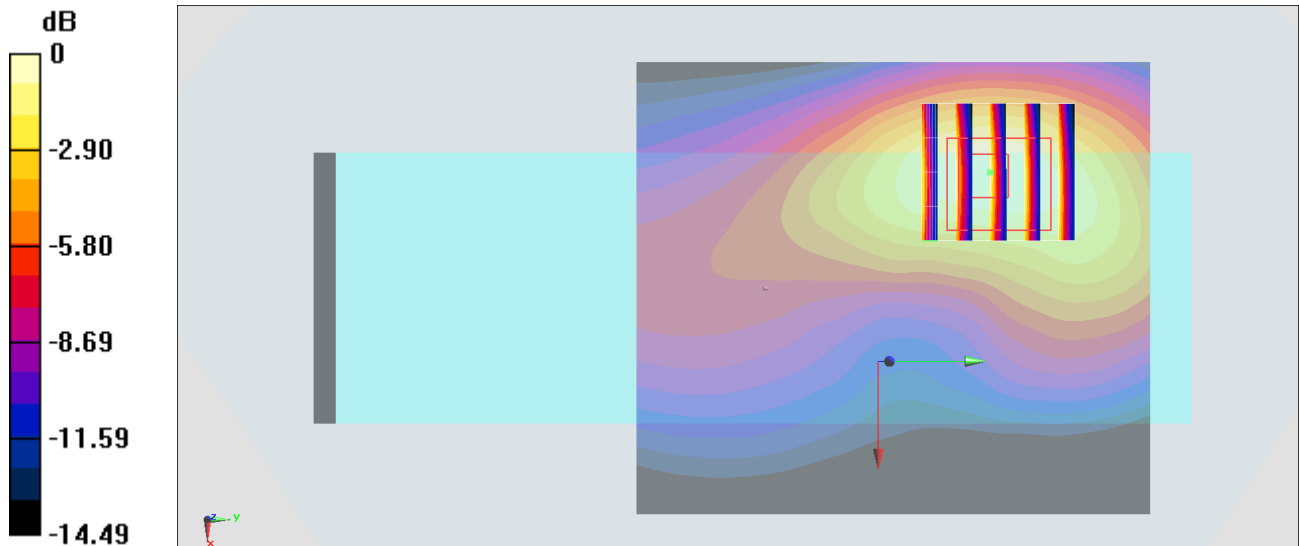
Zoom Scan (5x5x7)/Cube 0: Measurement grid: dx=8mm, dy=8mm, dz=5mm

Reference Value = 23.39 V/m; Power Drift = -0.02 dB

Peak SAR (extrapolated) = 0.839 W/kg

SAR(1 g) = 0.455 W/kg; SAR(10 g) = 0.260 W/kg

Maximum value of SAR (measured) = 0.697 W/kg



0 dB = 0.697 W/kg = -1.57 dBW/kg

#37_LTE Band 13_10M_QPSK_1_0_Back_0mm_Ch23230

Communication System: LTE ; Frequency: 782 MHz;Duty Cycle: 1:1

Medium: HSL_750_200816 Medium parameters used: $f = 782 \text{ MHz}$; $\sigma = 0.923 \text{ S/m}$; $\epsilon_r = 42.165$; $\rho = 1000 \text{ kg/m}^3$

Ambient Temperature : $23.2 \text{ }^\circ\text{C}$; Liquid Temperature : $22.2 \text{ }^\circ\text{C}$

DASY5 Configuration:

- Probe: EX3DV4 - SN7306; ConvF(9.92, 9.92, 9.92) @ 782 MHz; Calibrated: 2020/7/24
- Sensor-Surface: 1.4mm (Mechanical Surface Detection)
- Electronics: DAE4 Sn1424; Calibrated: 2020/1/24
- Phantom: SAM_Right; Type: SAM; Serial: TP:1446
- Measurement SW: DASY52, Version 52.10 (4);SEMCAD X Version 14.6.14 (7483)

Area Scan (71x81x1): Interpolated grid: $dx=1.500 \text{ mm}$, $dy=1.500 \text{ mm}$

Maximum value of SAR (interpolated) = 1.02 W/kg

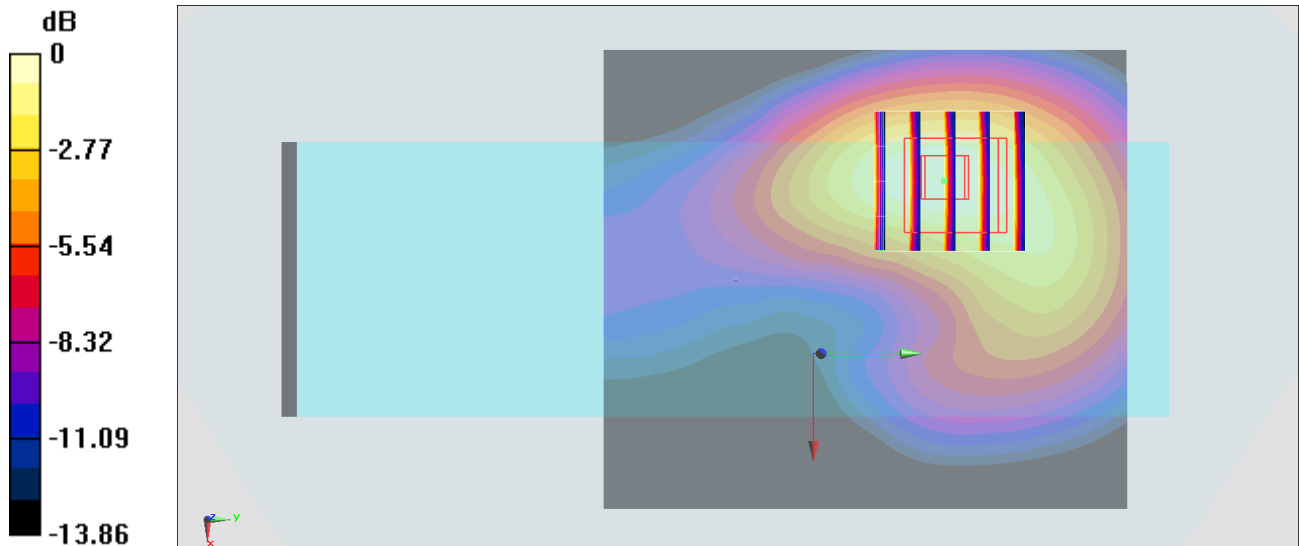
Zoom Scan (5x5x7)/Cube 0: Measurement grid: $dx=8\text{mm}$, $dy=8\text{mm}$, $dz=5\text{mm}$

Reference Value = 29.00 V/m ; Power Drift = 0.17 dB

Peak SAR (extrapolated) = 1.25 W/kg

SAR(1 g) = 0.651 W/kg ; SAR(10 g) = 0.379 W/kg

Maximum value of SAR (measured) = 1.01 W/kg



0 dB = $1.01 \text{ W/kg} = 0.04 \text{ dBW/kg}$

#38_LTE Band 14_10M_QPSK_1_0_Back_0mm_Ch23330

Communication System: LTE; Frequency: 793 MHz; Duty Cycle: 1:1

Medium: HSL_750_200902 Medium parameters used: $f = 793$ MHz; $\sigma = 0.927$ S/m; $\epsilon_r = 42.115$; $\rho = 1000$ kg/m³

Ambient Temperature : 23.4 °C ; Liquid Temperature : 22.4 °C

DASY5 Configuration:

- Probe: ES3DV3 - SN3124; ConvF(6.47, 6.47, 6.47) @ 793 MHz; Calibrated: 2019/12/18
- Sensor-Surface: 3mm (Mechanical Surface Detection)
- Electronics: DAE4 Sn316; Calibrated: 2019/12/20
- Phantom: SAM_Right; Type: QD000P40CD; Serial: TP:1815
- Measurement SW: DASY52, Version 52.10 (4); SEMCAD X Version 14.6.14 (7483)

Area Scan (61x141x1): Interpolated grid: dx=1.500 mm, dy=1.500 mm

Maximum value of SAR (interpolated) = 1.15 W/kg

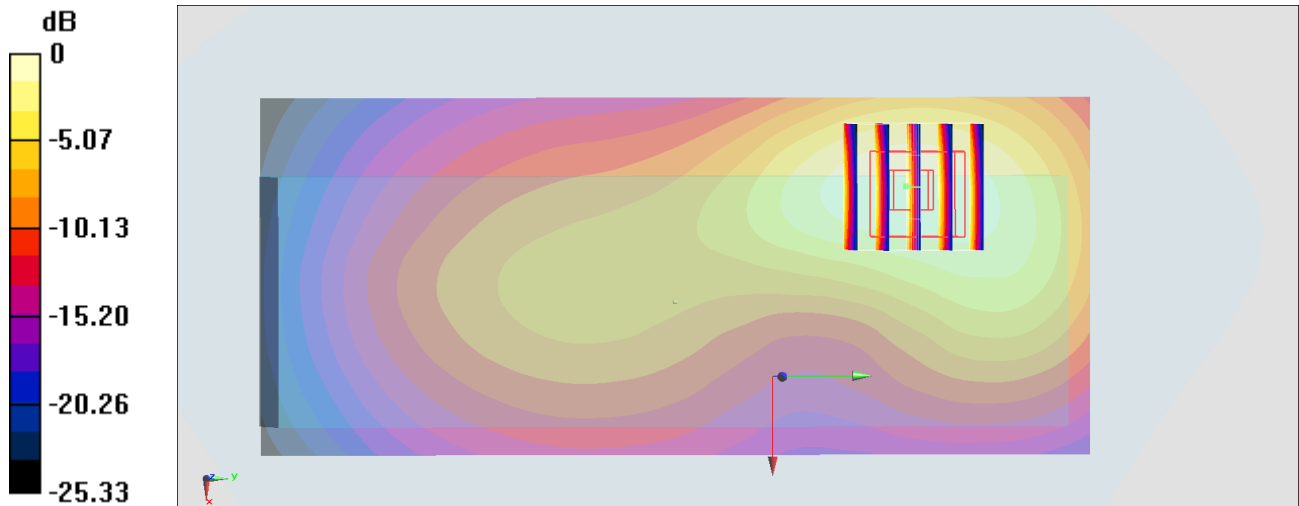
Zoom Scan (5x5x7)/Cube 0: Measurement grid: dx=8mm, dy=8mm, dz=5mm

Reference Value = 14.79 V/m; Power Drift = -0.08 dB

Peak SAR (extrapolated) = 1.43 W/kg

SAR(1 g) = 0.966 W/kg; SAR(10 g) = 0.619 W/kg

Maximum value of SAR (measured) = 1.13 W/kg



0 dB = 1.15 W/kg = 0.61 dBW/kg

#39_LTE Band 66_20M_QPSK_1_0_Back_0mm_Ch132322

Communication System: LTE; Frequency: 1745 MHz; Duty Cycle: 1:1

Medium: HSL_1750_200901 Medium parameters used: $f = 1745$ MHz; $\sigma = 1.355$ S/m; $\epsilon_r = 40.081$; $\rho = 1000$ kg/m³

Ambient Temperature : 23.4 °C ; Liquid Temperature : 22.4 °C

DASY5 Configuration:

- Probe: ES3DV3 - SN3124; ConvF(5.53, 5.53, 5.53) @ 1745 MHz; Calibrated: 2019/12/18
- Sensor-Surface: 3mm (Mechanical Surface Detection)
- Electronics: DAE4 Sn316; Calibrated: 2019/12/20
- Phantom: SAM_Right; Type: QD000P40CD; Serial: TP:1815
- Measurement SW: DASY52, Version 52.10 (4); SEMCAD X Version 14.6.14 (7483)

Area Scan (71x141x1): Interpolated grid: dx=1.500 mm, dy=1.500 mm

Maximum value of SAR (interpolated) = 1.04 W/kg

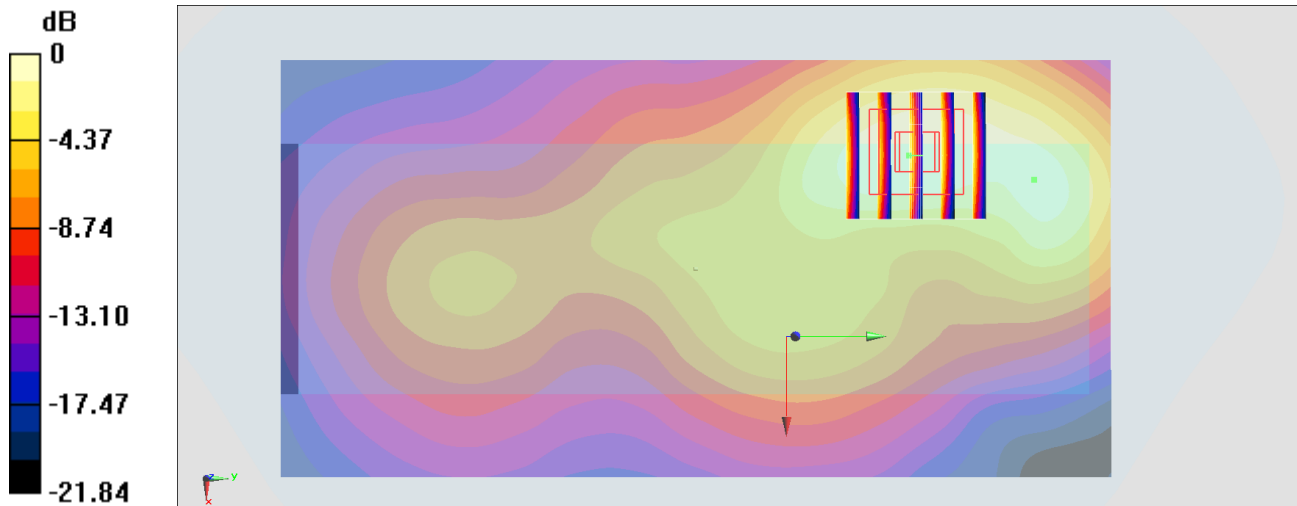
Zoom Scan (5x5x7)/Cube 0: Measurement grid: dx=8mm, dy=8mm, dz=5mm

Reference Value = 14.91 V/m; Power Drift = -0.06 dB

Peak SAR (extrapolated) = 1.69 W/kg

SAR(1 g) = 0.889 W/kg; SAR(10 g) = 0.508 W/kg

Maximum value of SAR (measured) = 1.10 W/kg



0 dB = 1.04 W/kg = 0.17 dBW/kg

#40_WLAN2.4GHz_802.11b 1Mbps_Back_0mm_Ch11

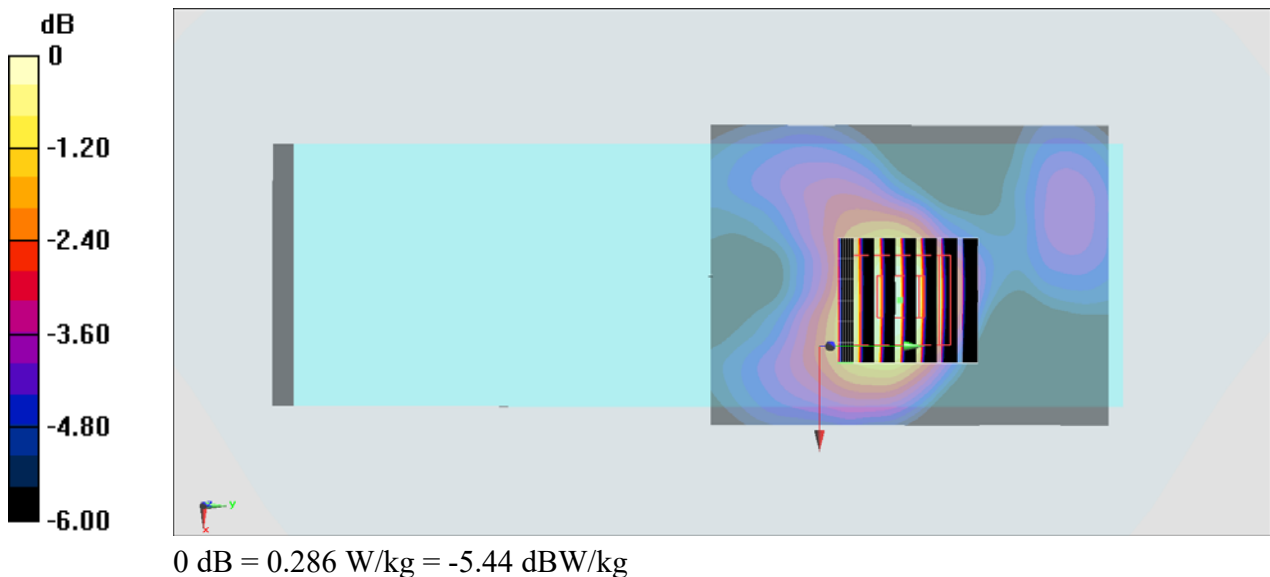
Communication System: 802.11b ; Frequency: 2462 MHz;Duty Cycle: 1:1.007
Medium: HSL_2450_200905 Medium parameters used: $f = 2462$ MHz; $\sigma = 1.833$ S/m; $\epsilon_r = 38.673$;
 $\rho = 1000$ kg/m³
Ambient Temperature : 23.6 °C ; Liquid Temperature : 22.6 °C

DASY5 Configuration

- Probe: ES3DV3 - SN3124;ConvF(4.64, 4.64, 4.64) @ 2462 MHz;Calibrated: 2019/12/18
- Sensor-Surface: 3mm (Mechanical Surface Detection)
- Electronics: DAE4 Sn316; Calibrated: 2019/12/20
- Phantom: SAM_Right; Type: QD000P40CD; Serial: TP:1815
- Measurement SW: DASY52, Version 52.10 (4);SEMCAD X Version 14.6.14 (7483)

Area Scan (61x81x1): Interpolated grid: dx=1.200 mm, dy=1.200 mm
Maximum value of SAR (interpolated) = 0.293 W/kg

Zoom Scan (7x7x7)/Cube 0: Measurement grid: dx=5mm, dy=5mm, dz=5mm
Reference Value = 6.446 V/m; Power Drift = 0.03 dB
Peak SAR (extrapolated) = 0.384 W/kg
SAR(1 g) = 0.236 W/kg; SAR(10 g) = 0.135 W/kg
Maximum value of SAR (measured) = 0.286 W/kg



#41_WLAN5GHz_802.11n-HT40 MCS0_Back_0mm_Ch54

Communication System: 802.11n; Frequency: 5270 MHz; Duty Cycle: 1:1.037

Medium: HSL_5G_200905 Medium parameters used: $f = 5270$ MHz; $\sigma = 4.673$ S/m; $\epsilon_r = 36.828$; $\rho = 1000$ kg/m³

Ambient Temperature : 23.4 °C ; Liquid Temperature : 22.4 °C

DASY5 Configuration

- Probe: EX3DV4 - SN7306; ConvF(5.36, 5.36, 5.36) @ 5270 MHz; Calibrated: 2020/7/24
- Sensor-Surface: 1.4mm (Mechanical Surface Detection)
- Electronics: DAE3 Sn495; Calibrated: 2020/7/21
- Phantom: SAM LEFT; Type: QD000P40CD; Serial: TP:1718
- Measurement SW: DASY52, Version 52.10 (4); SEMCAD X Version 14.6.14 (7483)

Area Scan (81x101x1): Interpolated grid: dx=1.000 mm, dy=1.000 mm

Maximum value of SAR (interpolated) = 0.933 W/kg

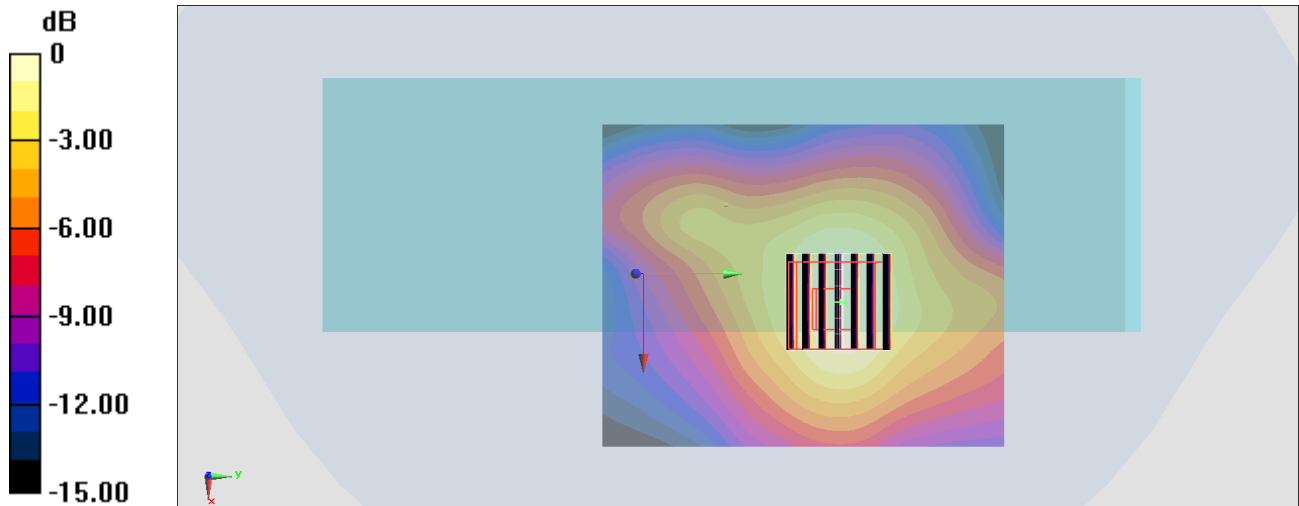
Zoom Scan (7x7x7)/Cube 0: Measurement grid: dx=4mm, dy=4mm, dz=1.4mm

Reference Value = 16.23 V/m; Power Drift = -0.03 dB

Peak SAR (extrapolated) = 1.58 W/kg

SAR(1 g) = 0.473 W/kg; SAR(10 g) = 0.198 W/kg

Maximum value of SAR (measured) = 0.998 W/kg



0 dB = 0.933 W/kg = -0.30 dBW/kg

#42_WLAN5GHz_802.11ac-VHT80 MCS0_Back_0mm_Ch138

Communication System: 802.11ac; Frequency: 5690 MHz; Duty Cycle: 1:1.084

Medium: HSL_5G_200905 Medium parameters used : $f = 5690$ MHz; $\sigma = 5.023$ S/m; $\epsilon_r = 36.142$; $\rho = 1000$ kg/m³

Ambient Temperature : 23.4 °C; Liquid Temperature : 22.4 °C

DASY5 Configuration

- Probe: EX3DV4 - SN7306; ConvF(4.91, 4.91, 4.91) @ 5690 MHz; Calibrated: 2020/7/24
- Sensor-Surface: 1.4mm (Mechanical Surface Detection)
- Electronics: DAE3 Sn495; Calibrated: 2020/7/21
- Phantom: SAM LEFT; Type: QD000P40CD; Serial: TP:1718
- Measurement SW: DASY52, Version 52.10 (4); SEMCAD X Version 14.6.14 (7483)

Area Scan (81x101x1): Interpolated grid: dx=1.000 mm, dy=1.000 mm

Maximum value of SAR (interpolated) = 1.16 W/kg

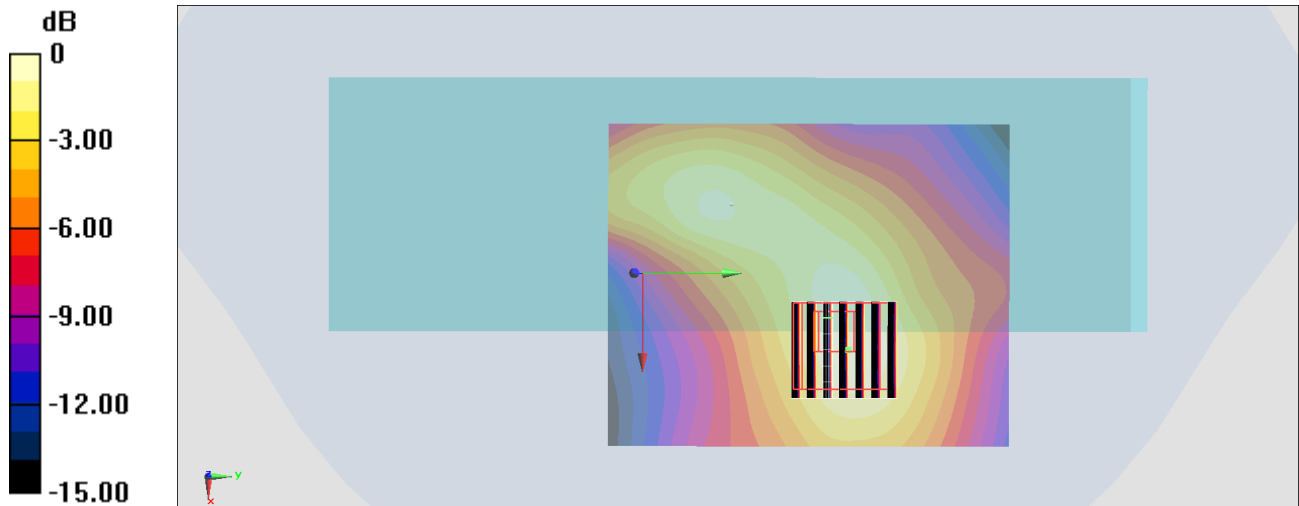
Zoom Scan (7x7x7)/Cube 0: Measurement grid: dx=4mm, dy=4mm, dz=1.4mm

Reference Value = 17.43 V/m; Power Drift = -0.05 dB

Peak SAR (extrapolated) = 2.11 W/kg

SAR(1 g) = 0.568 W/kg; SAR(10 g) = 0.235 W/kg

Maximum value of SAR (measured) = 1.26 W/kg



0 dB = 1.16 W/kg = 0.64 dBW/kg

#43_WLAN5GHz_802.11ac-VHT80 MCS0_Back_0mm_Ch155

Communication System: 802.11ac; Frequency: 5775 MHz; Duty Cycle: 1:1.084

Medium: HSL_5G_200905 Medium parameters used: $f = 5775$ MHz; $\sigma = 5.158$ S/m; $\epsilon_r = 35.79$; $\rho = 1000$ kg/m³

Ambient Temperature : 23.4 °C; Liquid Temperature : 22.4 °C

DASY5 Configuration

- Probe: EX3DV4 - SN7306; ConvF(4.91, 4.91, 4.91) @ 5775 MHz; Calibrated: 2020/7/24
- Sensor-Surface: 1.4mm (Mechanical Surface Detection)
- Electronics: DAE3 Sn495; Calibrated: 2020/7/21
- Phantom: SAM LEFT; Type: QD000P40CD; Serial: TP:1718
- Measurement SW: DASY52, Version 52.10 (4); SEMCAD X Version 14.6.14 (7483)

Area Scan (81x101x1): Interpolated grid: dx=1.000 mm, dy=1.000 mm

Maximum value of SAR (interpolated) = 0.800 W/kg

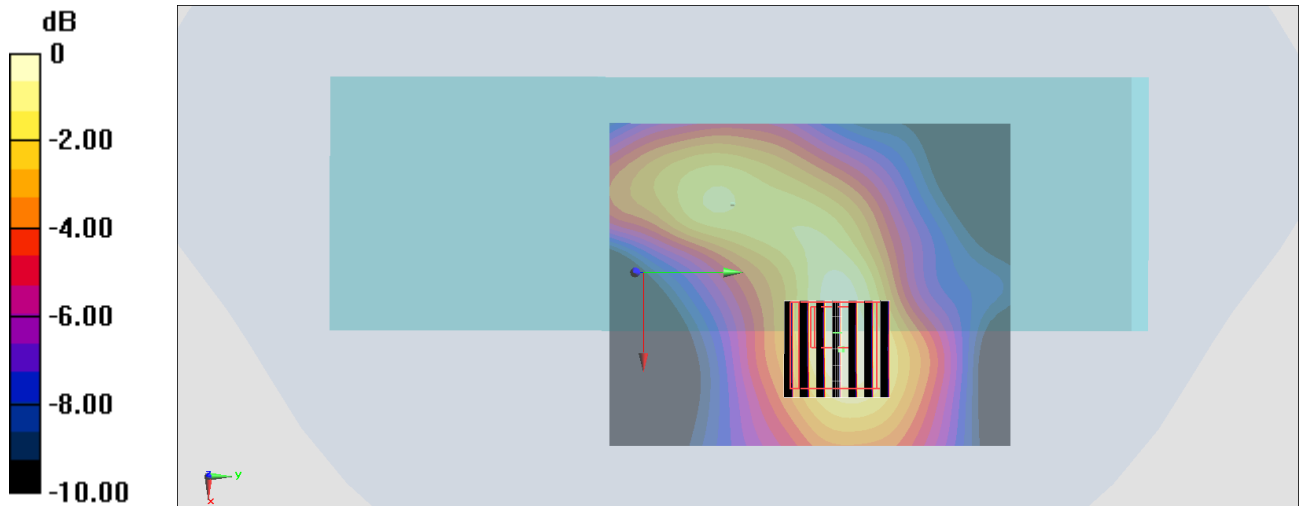
Zoom Scan (7x7x7)/Cube 0: Measurement grid: dx=4mm, dy=4mm, dz=1.4mm

Reference Value = 14.67 V/m; Power Drift = -0.11 dB

Peak SAR (extrapolated) = 1.52 W/kg

SAR(1 g) = 0.398 W/kg; SAR(10 g) = 0.159 W/kg

Maximum value of SAR (measured) = 0.897 W/kg



0 dB = 0.800 W/kg = -0.97 dBW/kg

#44_Bluetooth_LE-1Mbps_Back_0mm_Ch39

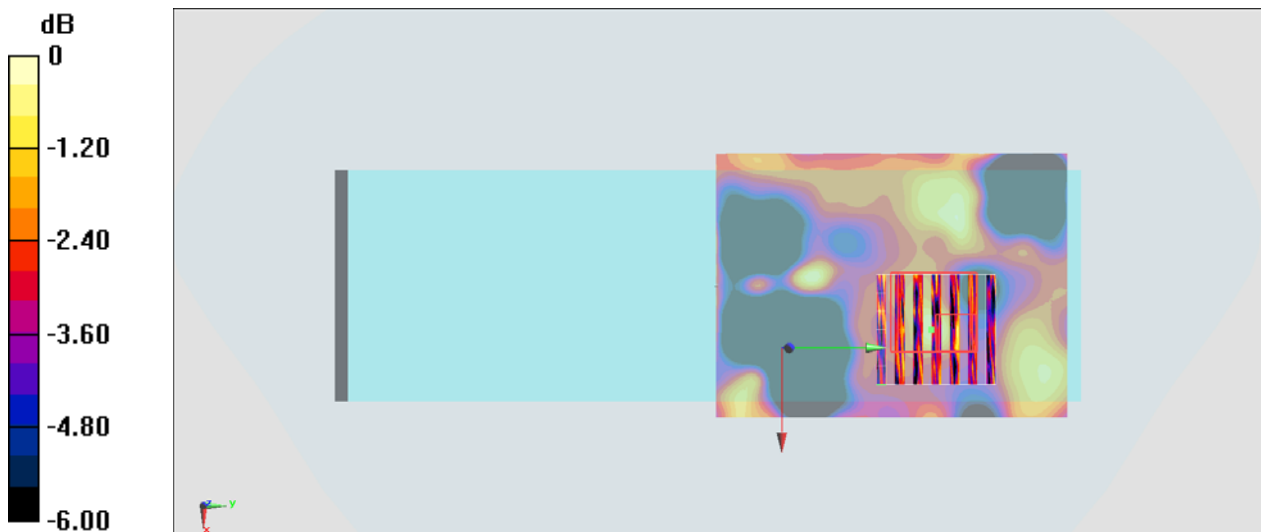
Communication System: Bluetooth; Frequency: 2480 MHz; Duty Cycle: 1:1.605
Medium: HSL_2450_200905 Medium parameters used: $f = 2480$ MHz; $\sigma = 1.853$ S/m; $\epsilon_r = 38.625$;
 $\rho = 1000$ kg/m³
Ambient Temperature : 23.6 °C ; Liquid Temperature : 22.6 °C

DASY5 Configuration

- Probe: ES3DV3 - SN3124; ConvF(4.64, 4.64, 4.64) @ 2480 MHz; Calibrated: 2019/12/18
- Sensor-Surface: 3mm (Mechanical Surface Detection)
- Electronics: DAE4 Sn316; Calibrated: 2019/12/20
- Phantom: SAM_Right; Type: QD000P40CD; Serial: TP:1815
- Measurement SW: DASY52, Version 52.10 (4); SEMCAD X Version 14.6.14 (7483)

Area Scan (61x81x1): Interpolated grid: dx=1.200 mm, dy=1.200 mm
Maximum value of SAR (interpolated) = 0.00174 W/kg

Zoom Scan (7x7x7)/Cube 0: Measurement grid: dx=5mm, dy=5mm, dz=5mm
Reference Value = 0.5810 V/m; Power Drift = 0.03 dB
Peak SAR (extrapolated) = 0.00302 W/kg
SAR(1 g) = 0.031 W/kg; SAR(10 g) = 0.0018 W/kg
Maximum value of SAR (measured) = 0.00190 W/kg



0 dB = 0.00190 W/kg = -27.21 dBW/kg