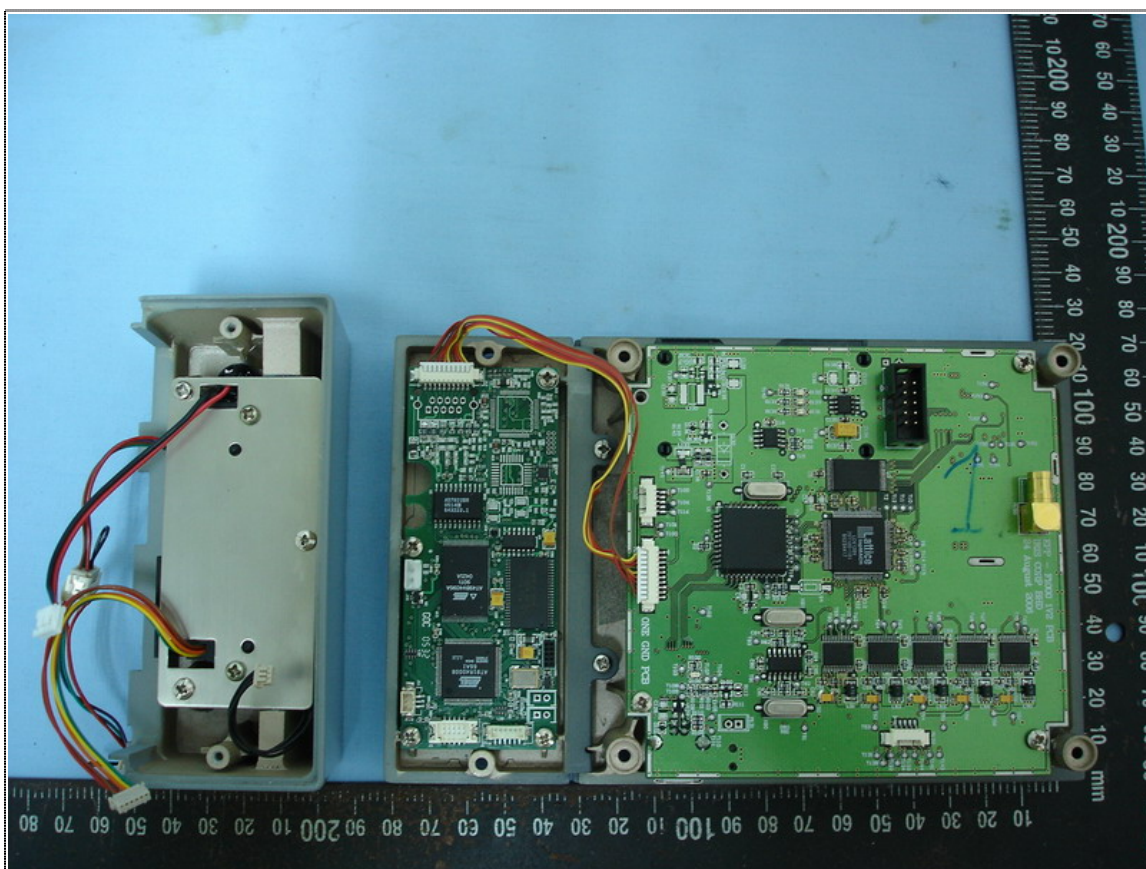


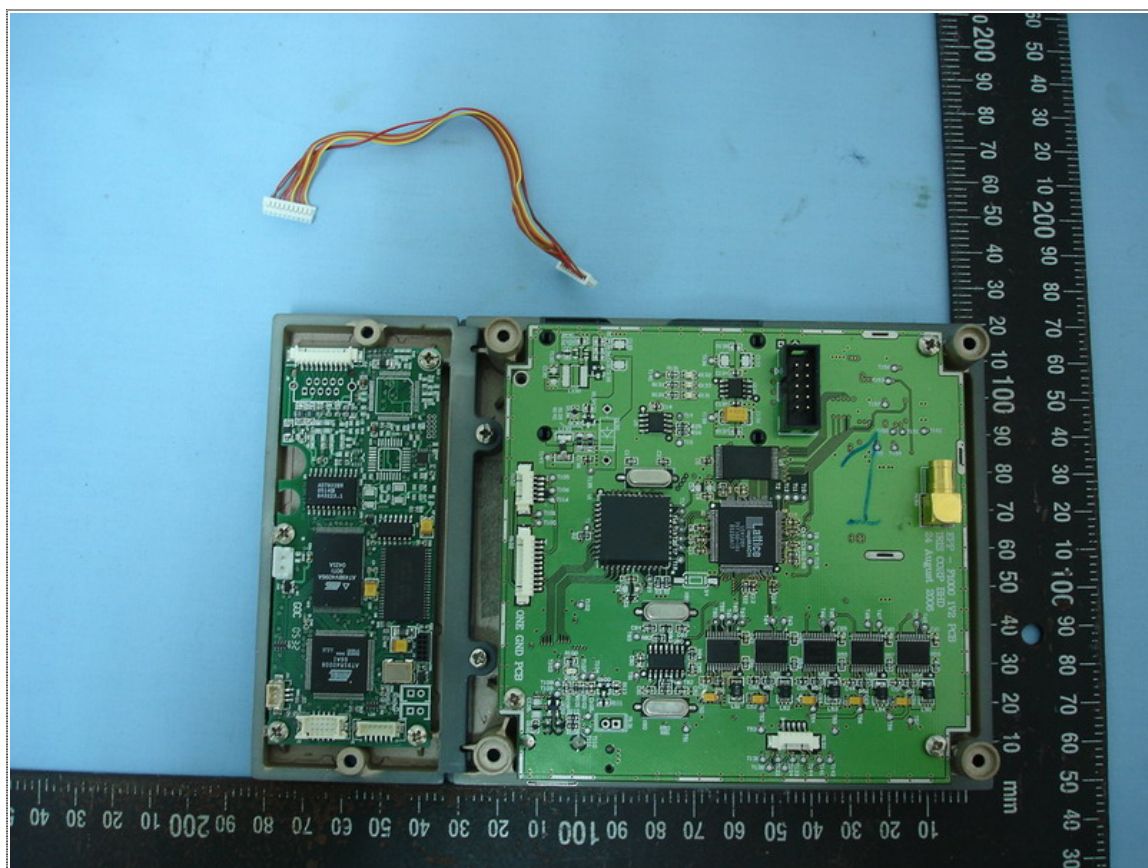


Inner View of EUT-1

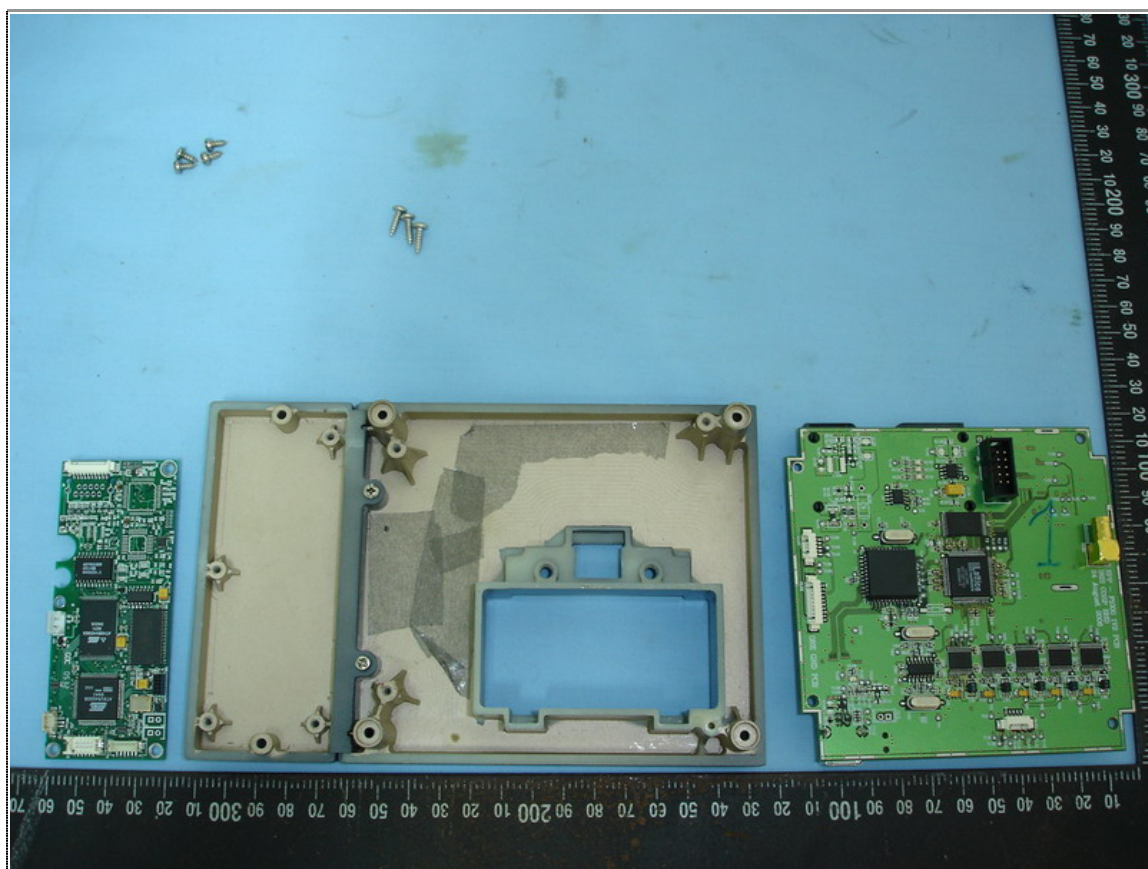


Inner View of EUT-2



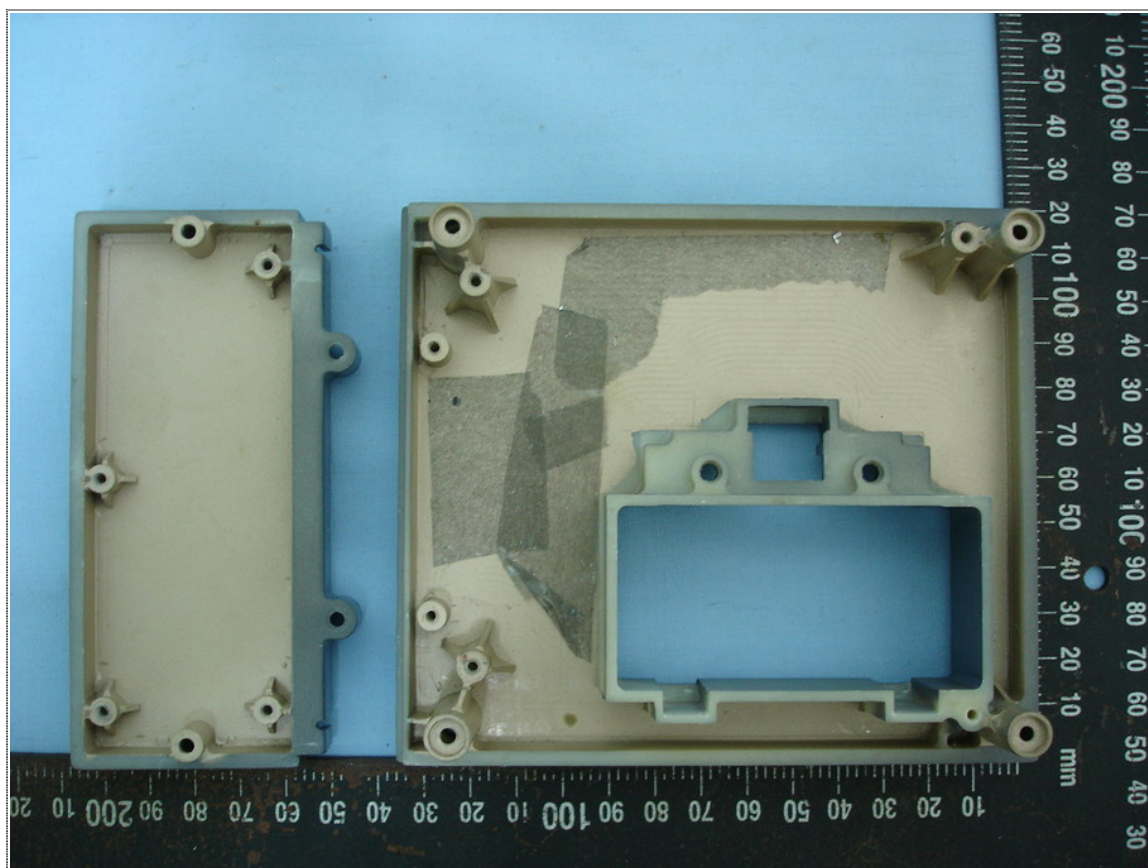


Inner View of EUT-3

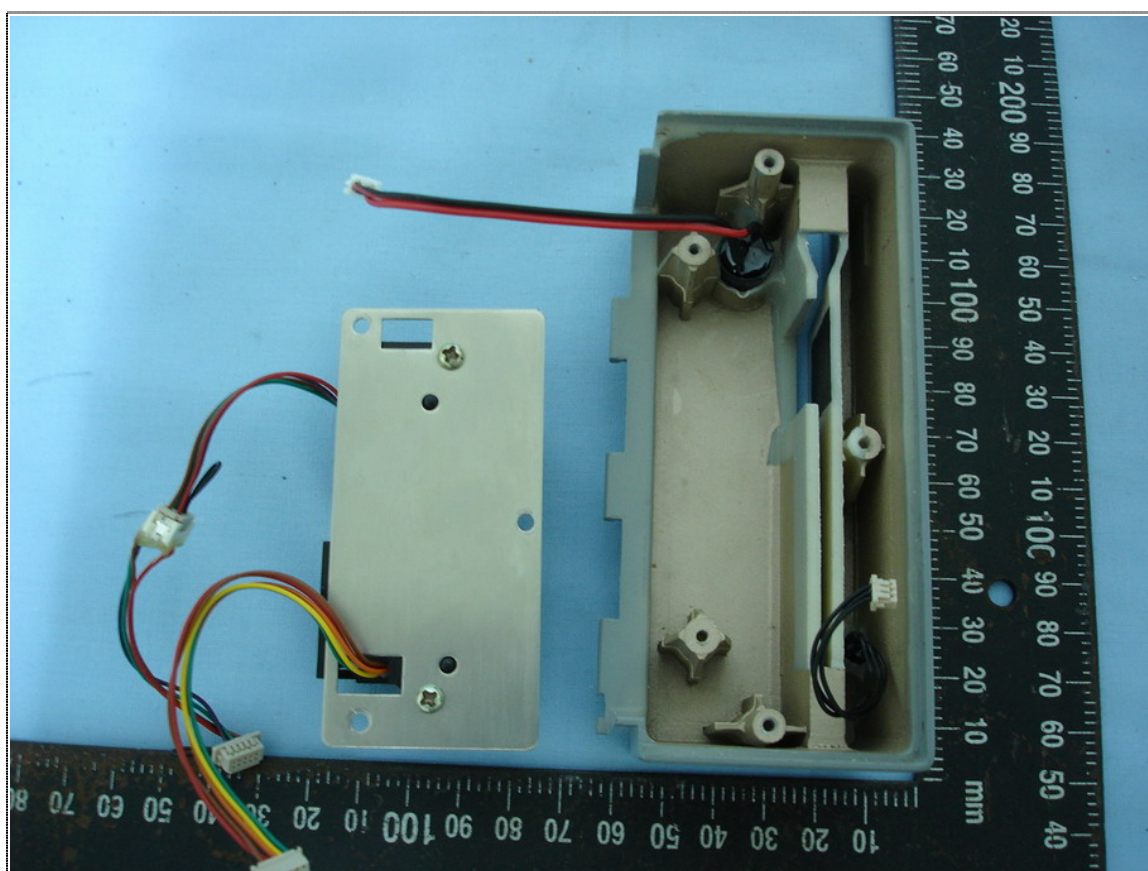


Inner View of EUT-4

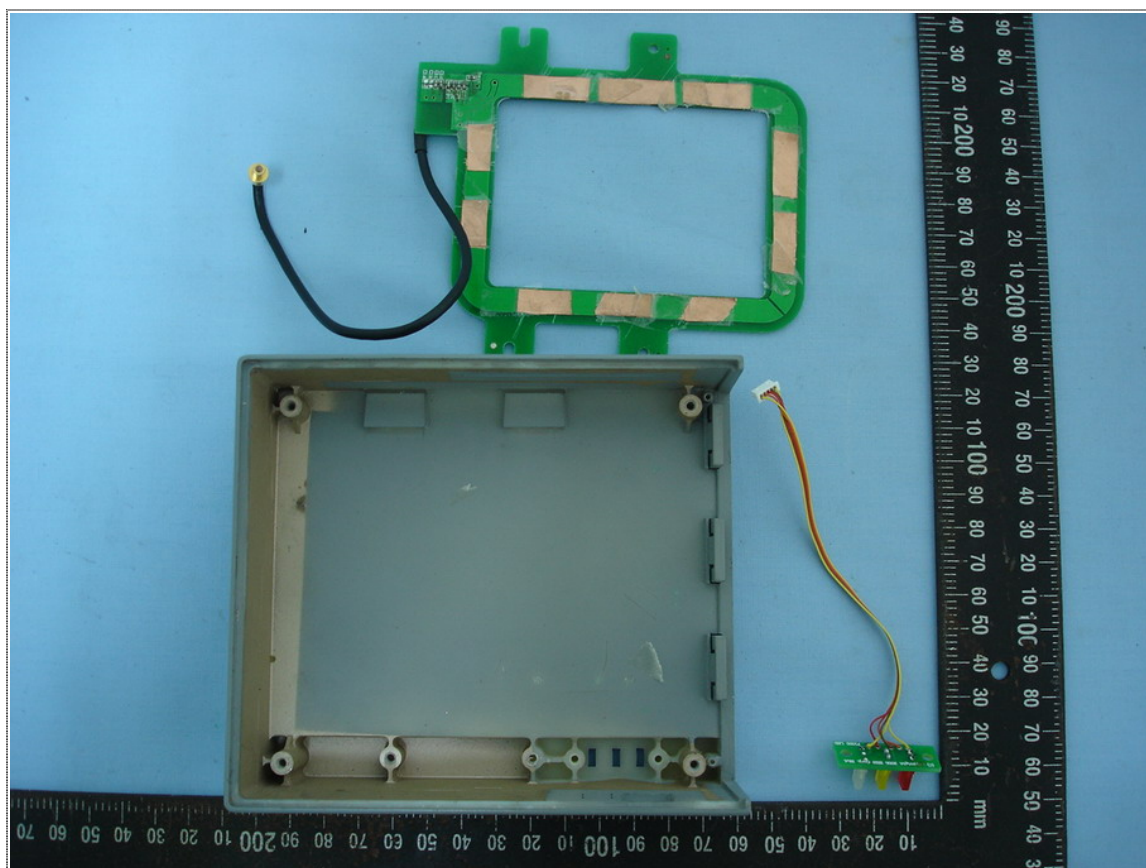




Inner View of EUT-5



Inner View of EUT-6

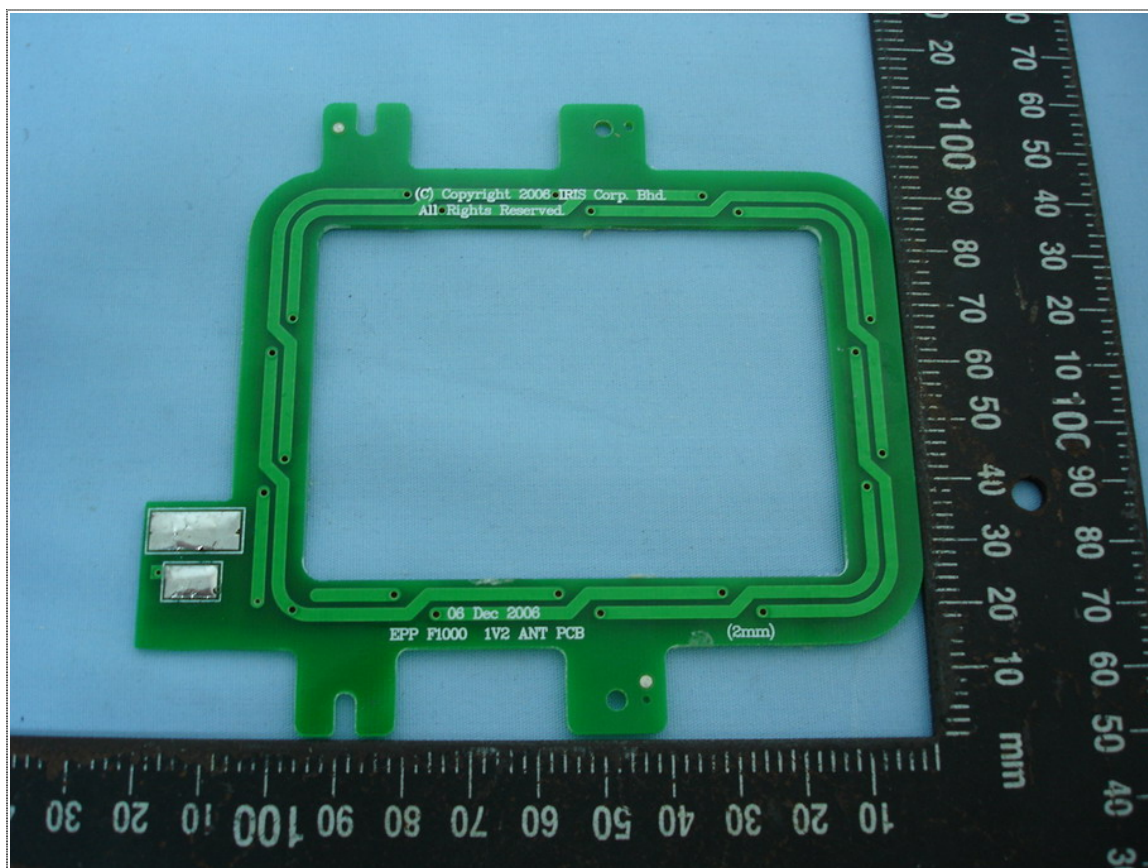


Inner View of EUT-7

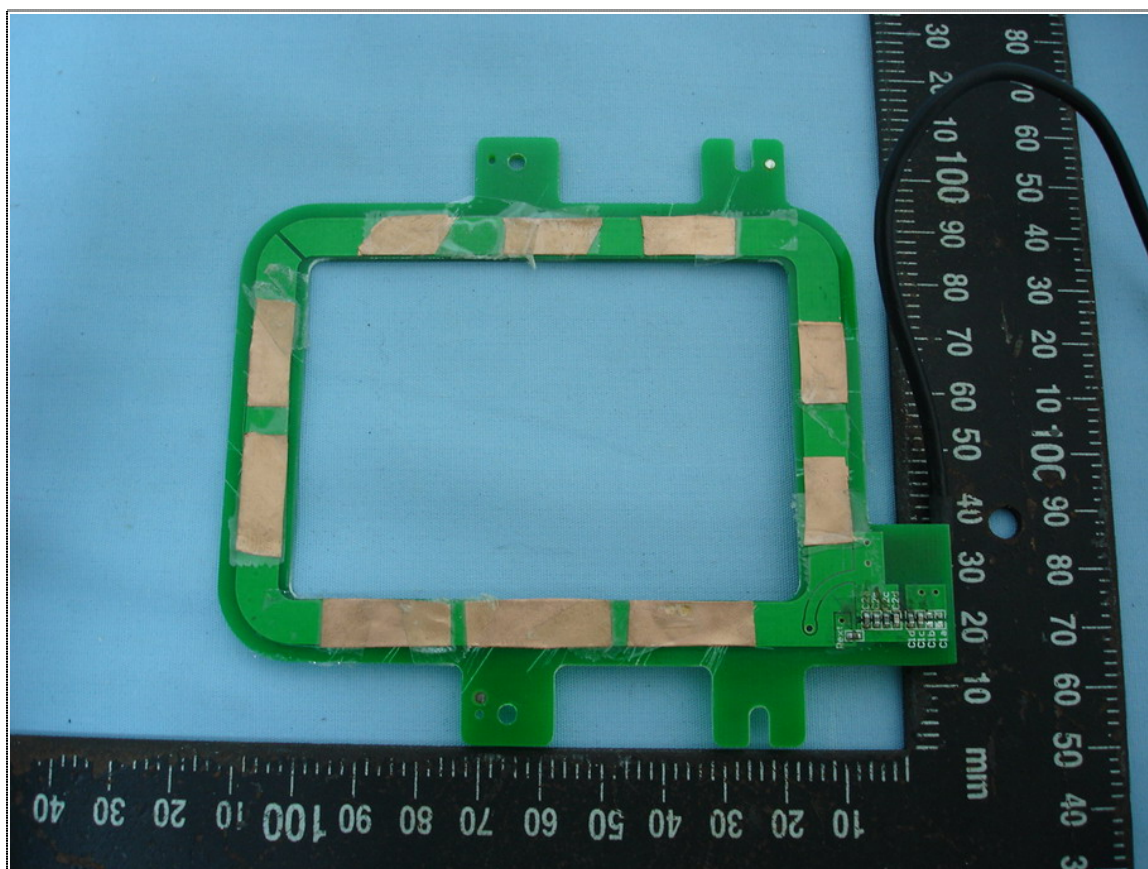


Antenna Location



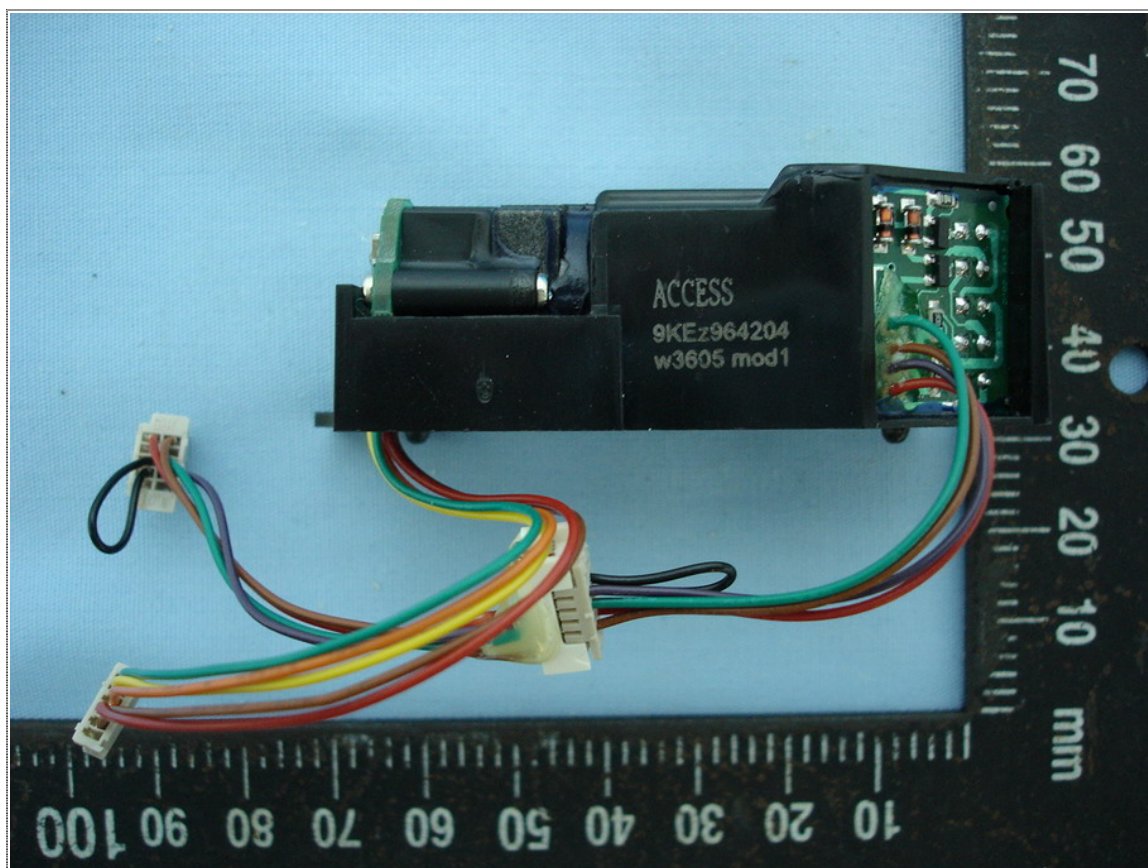


Front View of ANT PCB

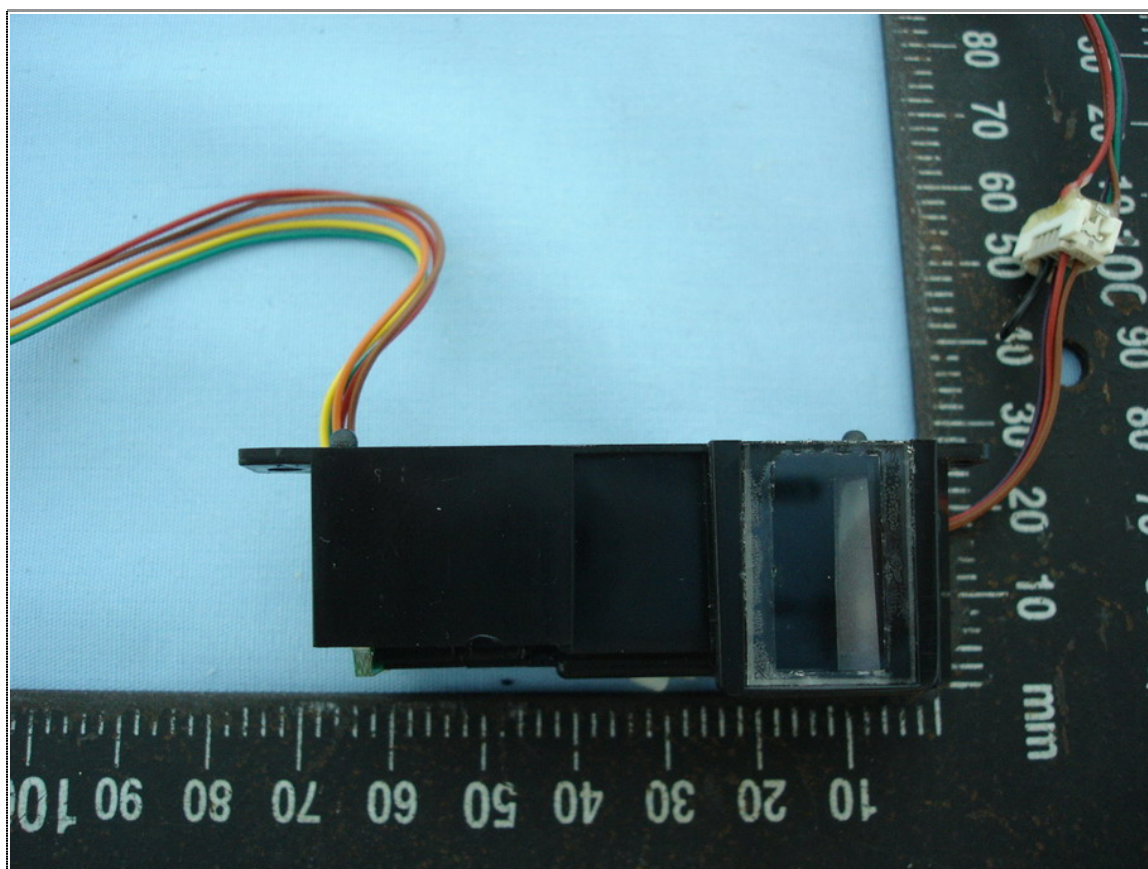


Rear View of ANT PCB



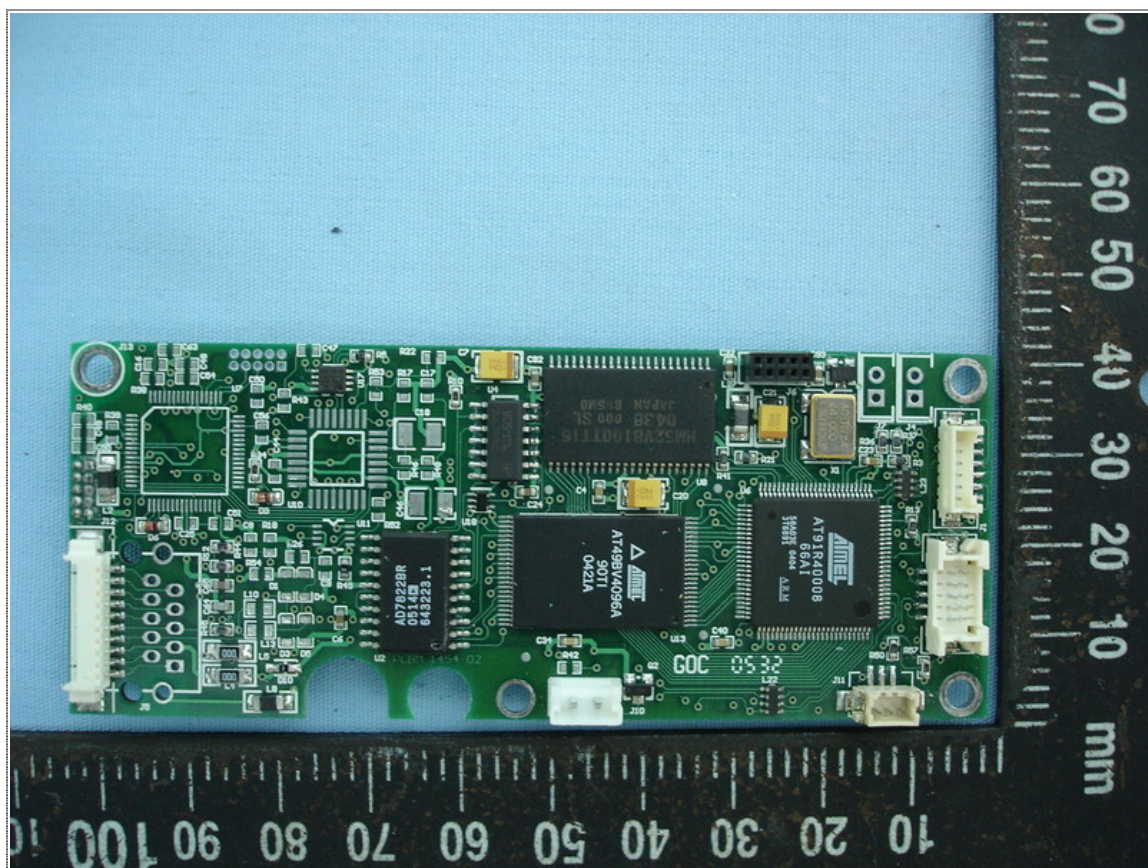


Front View of CCD

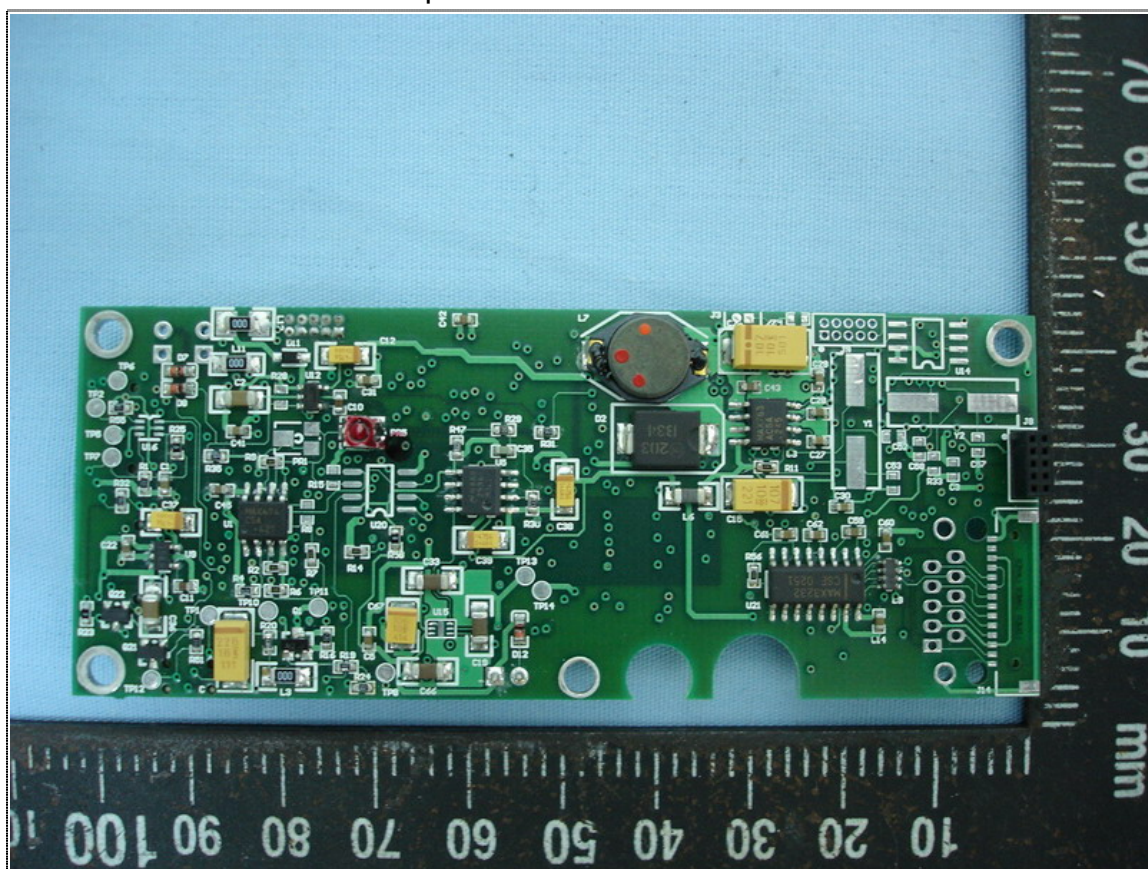


Rear View of CCD



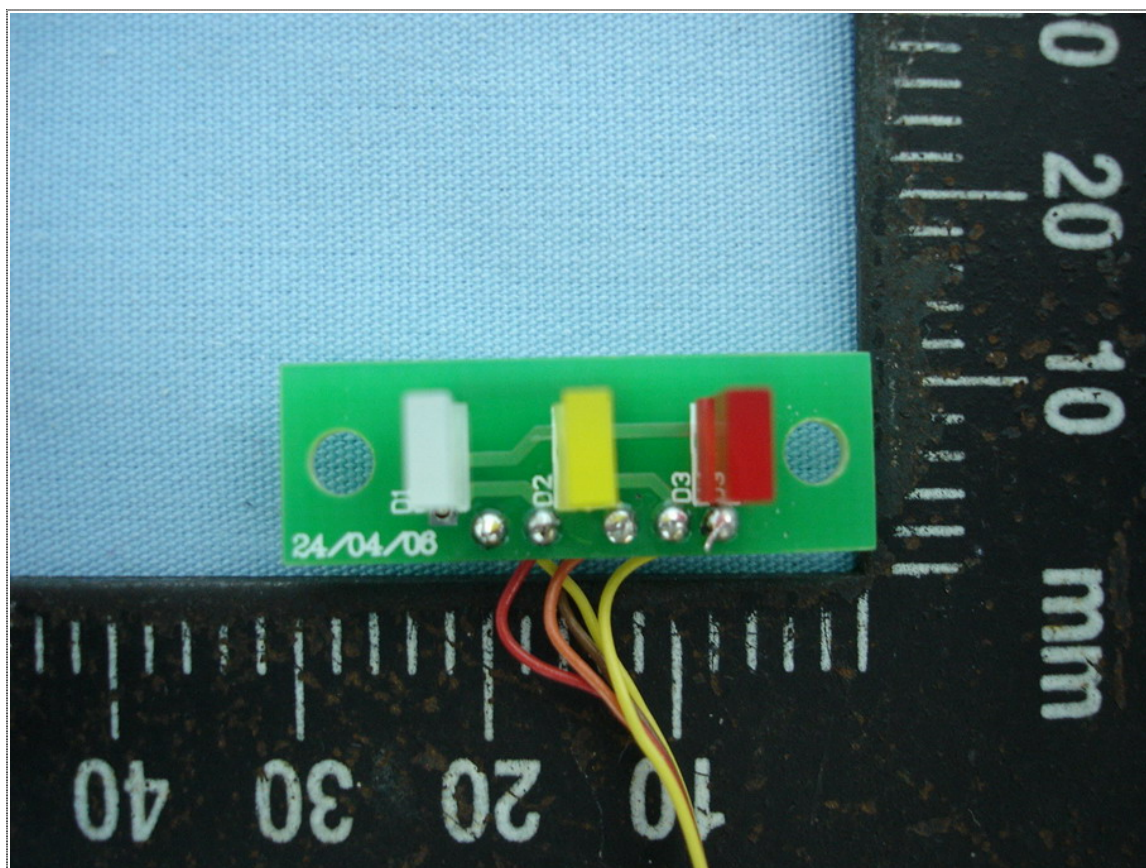


Component Side of GOC Board

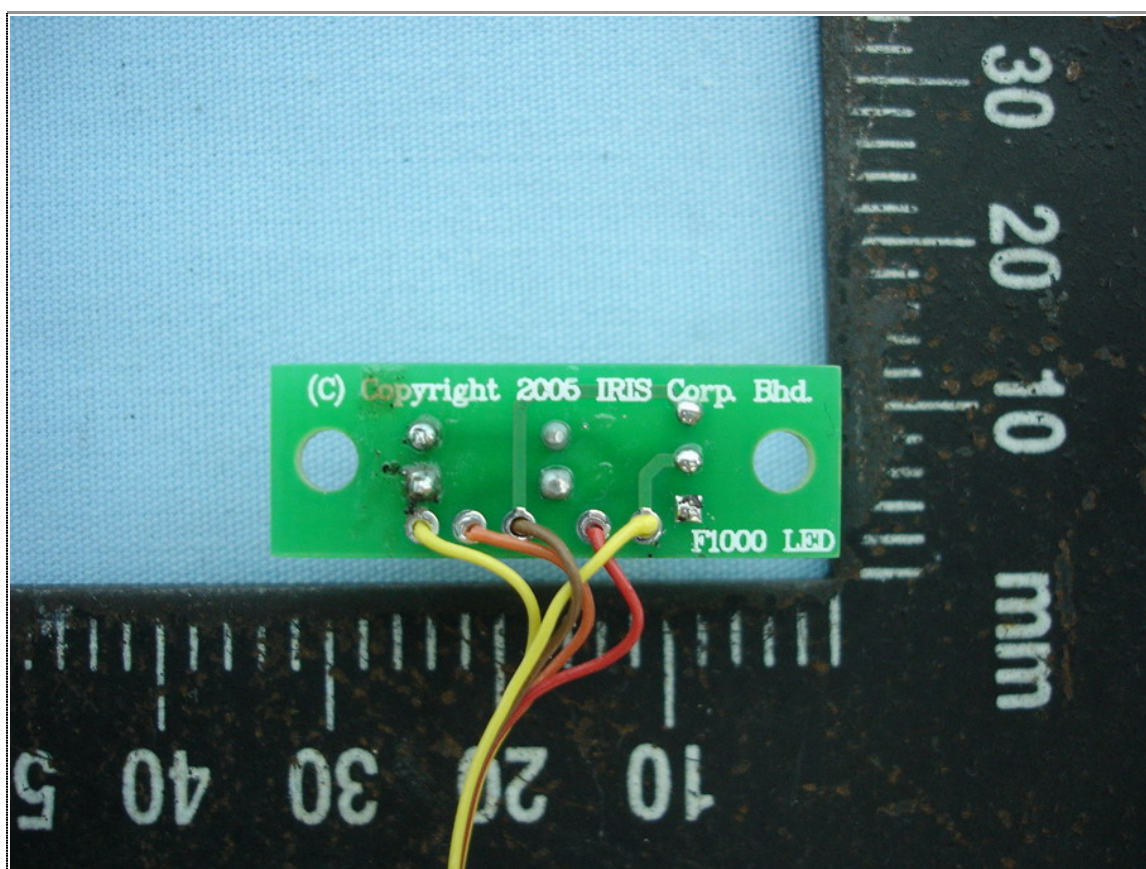


Solder Side of GOC Board



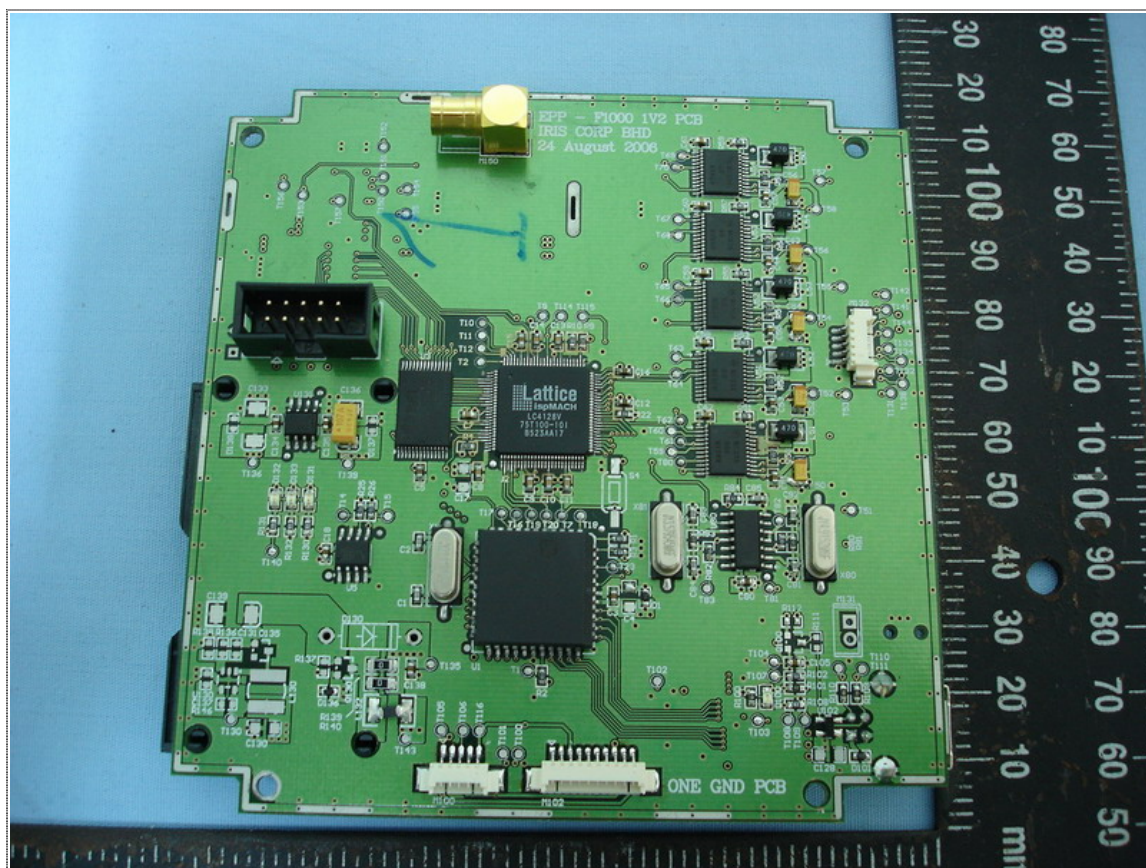


Front View of LED PCB

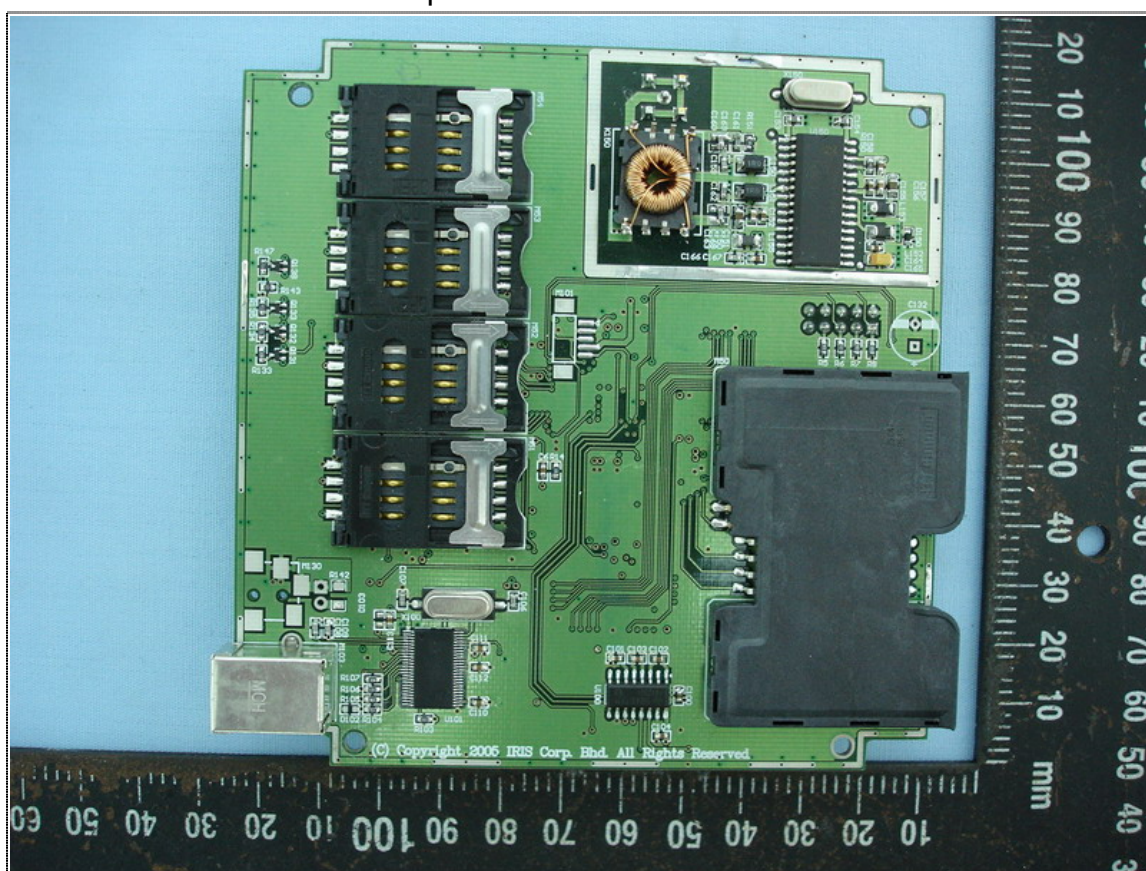


Rear View of LED PCB





Component Side of Main Board



Solder Side of Main Board