

1) How does this device operate?

The FM transmitter is a FM stereo transmitting configuration, which radiates FM wave on the air by modulating the any required signal to the carrier signal. The transmission frequency is set from 107.1 to 107.9MHz.

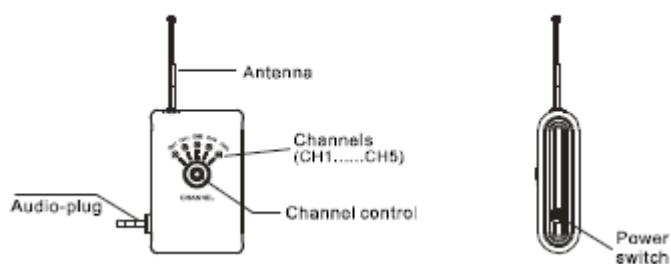
Operating Instructions:

1. Mount two AAA batteries according to the engraved polarities in the battery case. Pull out the antenna.
2. Connect the audio plug with the audio-out jack of the audio devices.
Switch on the power.
Adjust the volume of the audio devices properly.
3. Select one of the five channels which is not interfered by local radio stations. If the channel of CH1 interfered, then select CH2 or CH3 or CH4 or CH5.

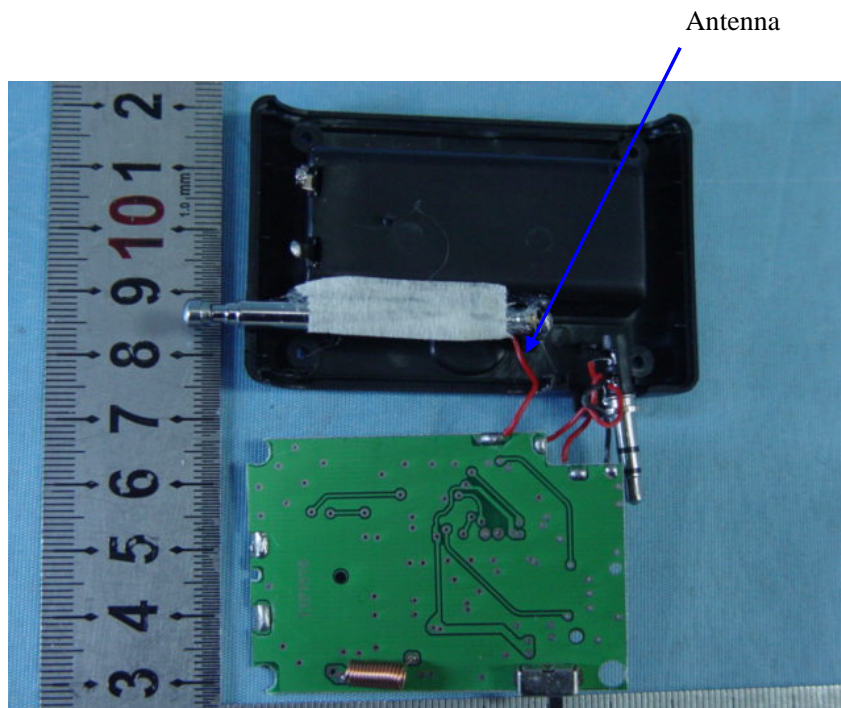
2) Provide information on the device and its antenna.

The transmitter has seven parts: transmitter body, telescopic antenna, channel display LED, channel control key, audio input plug, power switch and battery box.

Transmitter



The transmitter utilizes dipole antenna. The antenna was wired to PCB. And mount inside the enclosure by screw, so the antenna is not considered as replaceable.



3) How is it installed?

The transmitter is powered by two AAA batteries. It can be plugged to iPod headphone dock.

4) What test procedure was used?

ANSI C63.4, the test was performed in a semi-anechoic chamber.

5) If tested in a car, how was it configured/tested?

Not tested in a car, it was tested in a semi-anechoic chamber. **The EUT has been additionally tested / verified and does work in a typical car.**

6) Was the tuning range properly verified? The test lab should indicate in the report that the tuning controls were manually adjusted to verify maximum tuning range.

The FM transmitter is a FM stereo transmitting configuration, which radiates FM wave on the air by modulating the any required signal to the carrier signal. The transmission frequency is set from 107.1 to 107.9MHz.

We selected the low(107.1MHz) mid(107.5MHz) and High(107.9MHz) working frequency to measure the frequency. press the channel control key to select the transmission frequency .

We have indicated the testing in the test report, see clause 6.

7) Was the bandwidth properly tested with maximum audio input?

The test was performed with the maximum audio input. And play typical audio signal (music song).

We have indicated the operating condition in the test report, see clause 5.3.