

APPLICATION For GRANT OF CERTIFICATION

FOR

Model:

9-00C1-0908

Low Power Transmitter

FCC ID: UW5-900C10908

FOR

Power Technology Inc.

16302 Alexander Road

Alexander, Ar 72002

Test Report number 080219

Authorized Signatory: *Scott D Rogers*



ROGERS LABS, INC.

4405 West 259th Terrace
Louisburg, KS 66053
Phone / Fax (913) 837-3214

TEST REPORT

For

Application for Grant of Certification

For

Power Technology Inc.

16302 Alexander Road
Olathe, KS 66062
Phone: (501) 407-0712

Mr. William Burgess
VP of Operations

Model: 9-00C1-0908

Low Power Transmitter
Frequency Range: 916 MHz

FCC ID: UW5-900C10908

Test Report Number: 080219

Test Date: February 19, 2008

Certifying Engineer: *Scot D. Rogers*

Scot D. Rogers
Rogers Labs, Inc.
4405 West 259th Terrace
Louisburg, KS 66053
Telephone: (913) 837-3214
FAX: (913) 837-3214

This report shall not be reproduced except in full, without the written approval of the laboratory. This report must not be used by the client to claim product endorsement by NVLAP, NIST, or any agency of the U.S. Government.

Table of Contents

TABLE OF CONTENTS.....	3
FORWARD	5
APPLICABLE STANDARDS & TEST PROCEDURES	5
ENVIRONMENTAL CONDITIONS.....	5
EQUIPMENT TESTED	6
LIST OF TEST EQUIPMENT	6
2.1033(B) APPLICATION FOR CERTIFICATION	7
EQUIPMENT AND CABLE CONFIGURATION.....	8
Test Setup	8
EQUIPMENT FUNCTION AND TESTING PROCEDURES	8
Configuration options for the EUT	8
AC Line Conducted Emission Test Procedure.....	9
Radiated Emission Test Procedure	9
Units of Measurements.....	9
Test Site Locations.....	10
SUBPART C - INTENTIONAL RADIATORS	10
15.203 ANTENNA REQUIREMENTS	10
15.205 RESTRICTED BANDS OF OPERATION.....	11
Radiated Emissions in Restricted Bands Data per 15.205	11
Summary of Results for Radiated Emissions in Restricted Bands 15.205.....	11
15.209 RADIATED EMISSIONS LIMITS; GENERAL REQUIREMENTS.....	12
General Radiated EMI per 15.209	12
Figure one Radiated Emissions Plot	13
Figure two Radiated Emissions Plot	13
Figure three Radiated Emissions Plot	14
Figure four Radiated Emissions Plot	14
Figure five Radiated Emissions Plot	15
General Radiated Emissions Data per 15.209	15
Summary of Results for General Radiated Emissions per 15.209.....	15
15.249 OPERATION IN THE BAND902-928 MHZ	16
Figure six Occupied Bandwidth	17
Figure seven Operation in Frequency Band	17



NVLAP Lab Code 200087-0

Transmitter Radiated Emissions Data per 15.249	18
Summary of Results for Transmitter Radiated Emissions per 15.249	18
ANNEX.....	19
Annex A Measurement Uncertainty Calculations	20
Annex B Test Equipment List For Rogers Labs, Inc.	22
Annex C Qualifications	23
Annex D FCC Test Site Registration Letter.....	24
Annex E Industry Canada Test Site Registration Letter.....	25



Forward

The following information is submitted for consideration in obtaining a Grant of Certification for low power intentional radiator per CFR47 Paragraph 15.249, and Industry Canada RSS-210 Low Power Transmitter, operation in the 902-928 MHz band.

Name of Applicant: Power Technology Inc.
16302 Alexander Road
Alexander, Ar 72002

Model: 9-00C1-0908

FCC ID: UW5-900C10908

Frequency Range: 916 MHz.

Operating Power: 4 mW (as design specification, measured 89.9 dBμV/m @ 3 meters), for operation in the 902-928 MHz frequency band

Applicable Standards & Test Procedures

In accordance with the Federal Communications Commission, Code of Federal Regulations CFR47, dated October 1, 2006, Part 2, Subpart J, Paragraphs 2.907, 2.911, 2.913, 2.925, 2.926, 2.1031 through 2.1057, applicable parts of paragraph 15, Part 15C paragraph 15.249, and Industry Canada RSS-210, the following information is submitted.

Test procedures used are the established Methods of Measurement of Radio-Noise Emissions as described in the ANSI 63.4-2003 Document.

Environmental Conditions

Ambient Temperature	21.7° C
Relative Humidity	56%
Atmospheric Pressure	30.22 in Hg



NVLAP Lab Code 200087-0

Equipment Tested

<u>Equipment</u>	<u>Serial Number</u>	<u>FCC I.D.#</u>
9-00C1-0908	XXXXXX	UW5-900C10908

List of Test Equipment

A Hewlett Packard 8591EM and or 8562A Spectrum Analyzer was used as the measuring device for the emissions testing. The analyzer settings used are described in the following table. Refer to the Appendix for a complete list of Test Equipment.

HP 8591EM SPECTRUM ANALYZER SETTINGS		
CONDUCTED EMISSIONS		
RBW	AVG. BW	DETECTOR FUNCTION
9 kHz	30 kHz	Peak/Quasi Peak
RADIATED EMISSIONS (30 - 1000 MHz)		
RBW	AVG. BW	DETECTOR FUNCTION
120 kHz	300 kHz	Peak/Quasi Peak
HP 8562A SPECTRUM ANALYZER SETTINGS		
RADIATED EMISSIONS (1 - 40 GHz)		
RBW	AVG. BW	DETECTOR FUNCTION
1 MHz	1 MHz	Peak/Average
ANTENNA CONDUCTED EMISSIONS		
RBW	AVG. BW	DETECTOR FUNCTION
120 kHz	300 kHz	Peak

<u>EQUIPMENT</u>	<u>MFG.</u>	<u>MODEL</u>	<u>CAL. DATE</u>	<u>DUE.</u>
LISN	Comp. Design	FCC-LISN-2-MOD.CD	10/07	10/08
LISN	Comp. Design	1762	2/07	2/08
Antenna	ARA	BCD-235-B	10/07	10/08
Antenna	EMCO	3147	10/07	10/08
Antenna	EMCO	3143	5/07	5/08
Analyzer	HP	8591EM	5/07	5/08
Analyzer	HP	8562A	2/07	2/08



2.1033(b) Application for Certification

- (1) Manufacturer: Power Technology Inc.
16302 Alexander Road
Alexander, Ar 72002
Telephone: (501) 407-0712
- (2) FCC Identification: FCC I.D.: UW5-900C10908
- (3) Copy of the installation and operating manual: Refer to exhibit for Draft Instruction Manual.
- (4) Description of Circuit Functions, Device Operation: The 9-00C1-0908 is hand held wireless transmitter used to send information to a remote receiver. The unit incorporates the low power transmitter to communicate with compliant remote equipment. This device features communications operation in the 902-928 MHz frequency band.
- (5) Block Diagram with Frequencies: Refer to exhibit for the Block Diagram
- (6) Report of measurements showing compliance with the pertinent FCC/IC technical requires are provided in this report.
- (7) Photographs of equipment are provided in application exhibits.
- (8) Peripheral equipment or accessories for the equipment. No optional equipment is available for this transmitter.
- (9) Transition Provisions of 15.37 are not being requested.
- (10) The equipment is not a scanning receiver.
- (11) The equipment is not a transmitter operating in the 59-64 GHz frequency range.

Equipment and Cable Configuration

Test Setup

The 9-00C1-0908 is a hand held transmitter used to send control codes to a remote receiver. The incorporated low power transmitter allows for short-range communications in the 902-928 MHz band to compliant equipment. The EUT was arranged in a typical user equipment configuration for testing purposes. The transmitter offers no interface connections other than those in the configuration options shown below. The EUT is powered from internal battery only and offers no provision for alternate power sources. As requested by the manufacturer and required by the standards, the unit was tested for emissions compliance using the available configurations with the worst-case data presented. Test results in this report relate only to the products described in this report.

Equipment Function and Testing Procedures

The EUT is a low power transmitter with operation capability in the 902-928 MHz frequency band (CFR47, 15.249). The unit allows communications to other 902-928 MHz compliant equipment. The design is offered for the construction industry allowing for remote operation of a receiver connected to compliant equipment.

Configuration options for the EUT

9-00C1-0908

**Powered by AA
Batteries**



AC Line Conducted Emission Test Procedure

The equipment operates from internal batteries only and offers no connection to utility power systems. Therefore, no AC line conducted emissions testing was performed.

Radiated Emission Test Procedure

The EUT was arranged in the test configuration as shown above and placed on a rotating 1 x 1.5-meter wooden platform 0.8 meters above the ground plane at a distance of 3 meters from the FSM antenna. EMI energy was maximized by equipment placement, raising and lowering the FSM antenna, changing the antenna polarization, and by rotating the turntable. Each emission was maximized before final data was taken using a spectrum analyzer.

Refer to photographs in exhibits for EUT placement used during testing.

Units of Measurements

Conducted EMI: Data is in dB μ V; dB referenced to one microvolt.

Radiated EMI: Data is in dB μ V/m; dB/m referenced to one microvolt per meter.

Radiated Emissions Calculations:

Note: The limit is expressed for a measurement in dB μ V/m when the measurement is taken at a distance of 3 meters. Data taken for this report was taken at a distance of 3 meters.



Test Site Locations

Conducted EMI ROGERS LABS, INC. located at 4405 W. 259th
Terrace, Louisburg, KS.

Radiated EMI The radiated emissions tests were performed at
Rogers Labs, Inc. 3 meters Open Area Test Site
(OATS) located at 4405 W. 259th Terrace,
Louisburg, KS.

Site Approval Refer to Annex for FCC Site Registration Letter,
Reference 90910, and Industry Canada Site
Registration Letter Reference IC 3041-1.

Subpart C - Intentional Radiators

As per CFR47 Part 15, Subpart C the following information is
submitted for consideration in obtaining a grant of certification
for unlicensed intentional radiators.

15.203 Antenna Requirements

The unit is produced with a permanently attached antenna inside
the enclosure. No provisions for modification or alterations of
the antenna configuration are available. The requirements of
15.203 are met there are no deviations or exceptions to the
specification.

15.205 Restricted Bands of Operation

Spurious emissions falling in the restricted frequency bands of operation were measured at the 3-meter OATS. The EUT utilizes frequency, determining circuitry, which generates harmonics falling in the restricted bands. Emissions were investigated at the OATS, using appropriate antennas or pyramidal horns, amplification stages, and a spectrum analyzer. Peak and average amplitudes of frequencies above 1000 MHz were compared to the required limits with worst-case data presented below. Test procedures of ANSI 63.4-2003 paragraphs 13.1 and 8.3.1.2 were used during testing. No other significant emission was observed which fell into the restricted bands of operation. Computed emission values take into account the received radiated field strength, receive antenna correction factor, amplifier gain stage, and test system cable losses.

Sample Calculations:

$$\begin{aligned} \text{Computed Peak (dB}\mu\text{V/m @ 3m)} &= \text{FSM (dB}\mu\text{V)} + \text{A.F. (dB)} - \text{Gain (dB)} \\ &= 26.0 + 34.3 - 30 \\ &= 30.3 \end{aligned}$$

Radiated Emissions in Restricted Bands Data per 15.205

Emission Frequency (MHz)	FSM Horz. (dB μ V)	FSM Vert. (dB μ V)	Ant. Factor (dB)	Amp. Gain (dB)	RFS Horz. @ 3m (dB μ V/m)	RFS Vert. @ 3m (dB μ V/m)	Limit @ 3m (dB μ V/m)
2749.7	26.0	26.3	34.3	30	30.3	30.6	54.0
3666.2	27.5	24.7	38.0	30	35.5	32.7	54.0
4582.8	28.6	23.0	41.2	30	39.8	34.2	54.0

No other emissions found in the restricted bands.

Summary of Results for Radiated Emissions in Restricted Bands 15.205

The radiated emissions for the EUT meet the requirements for FCC CFR47 Part 15.205 restricted bands of operation. The EUT had an 14.2 dB minimum margin below the limits. Other emissions were present with amplitudes at least 20 dB below the required limits.

15.209 Radiated emissions limits; general requirements

General Radiated EMI per 15.209

Testing was performed with the EUT arranged in all typical equipment configurations and operated through available modes. Preliminary testing was performed in a screen room with the EUT positioned 1 meter from the FSM. Radiated emissions investigations were performed to identify the frequencies, which produced the highest emissions. Plots were made of the radiated emission frequency spectrum from 30 MHz to 12,000 MHz for the preliminary transmitter testing. Refer to figures one through five showing the worst-case radiated emission spectrum displayed on the spectrum analyzer taken in a screen room. The each radiated emission measured was then re-maximized at the OATS site before final radiated emissions measurements were performed. Final data was taken with the EUT located at the open field test site at a distance of 3 meters between the EUT and the receiving antenna. Test procedures of ANSI 63.4-2003 paragraphs 13.1 and 8.3.1.2 were used during radiated emissions testing. The frequency spectrum from 30 MHz to 25,000 MHz was searched for radiated emissions. Peak and average amplitudes of frequencies above 1000 MHz were compared to the required limits with worst-case data presented below. Measured emission levels were maximized by EUT placement on the table, changing cable location, rotating the turntable through 360 degrees, varying the antenna height between 1 and 4 meters above the ground plane and changing antenna polarization between horizontal and vertical. Antennas used were Broadband Biconical from 30 MHz to 200 MHz, Log Periodic from 200 MHz to 5 GHz, and/or Biconilog from 30 MHz to 1000 MHz, Double-Ridge horn and/or Pyramidal Horns from 5 GHz to 25 GHz, and amplification stages.

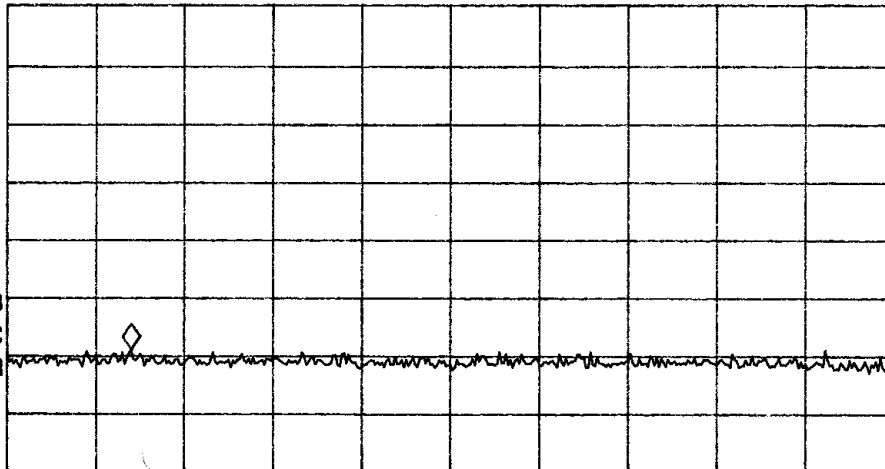
MARKER
58.0 MHz
20.97 dB μ V

ACTV DET: PEAK
MEAS DET: PEAK QP
MKR 58.0 MHz
20.97 dB μ V

LOG REF 80.0 dB μ V

10
dB/
#ATN
0 dB

MA SB
SC FC
CORR



START 30.0 MHz STOP 230.0 MHz
#IF BW 120 kHz AVG BW 300 kHz SWP 41.7 msec

Figure one Radiated Emissions Plot

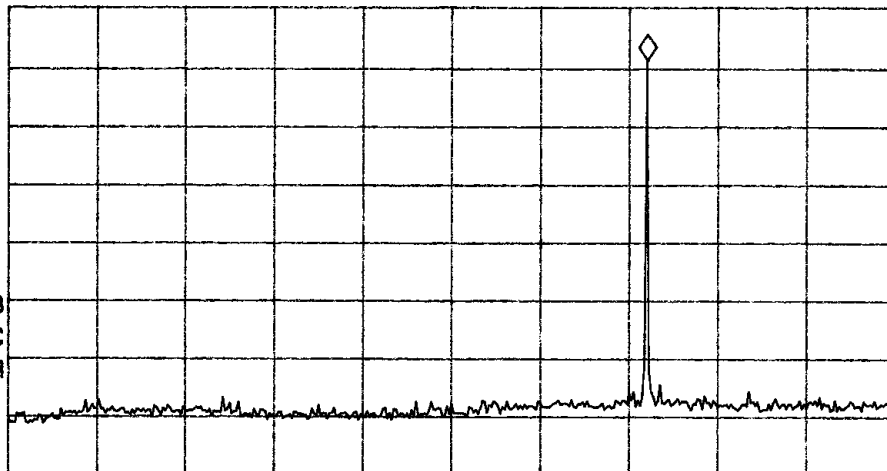
REF LEVEL
90.0 dB μ V

ACTV DET: PEAK
MEAS DET: PEAK QP
MKR 920 MHz
80.98 dB μ V

LOG REF 90.0 dB μ V

10
dB/
#ATN
0 dB

VA SB
SC FC
CORR



START 200 MHz STOP 1.200 GHz
#IF BW 120 kHz AVG BW 300 kHz SWP 208 msec

Figure two Radiated Emissions Plot

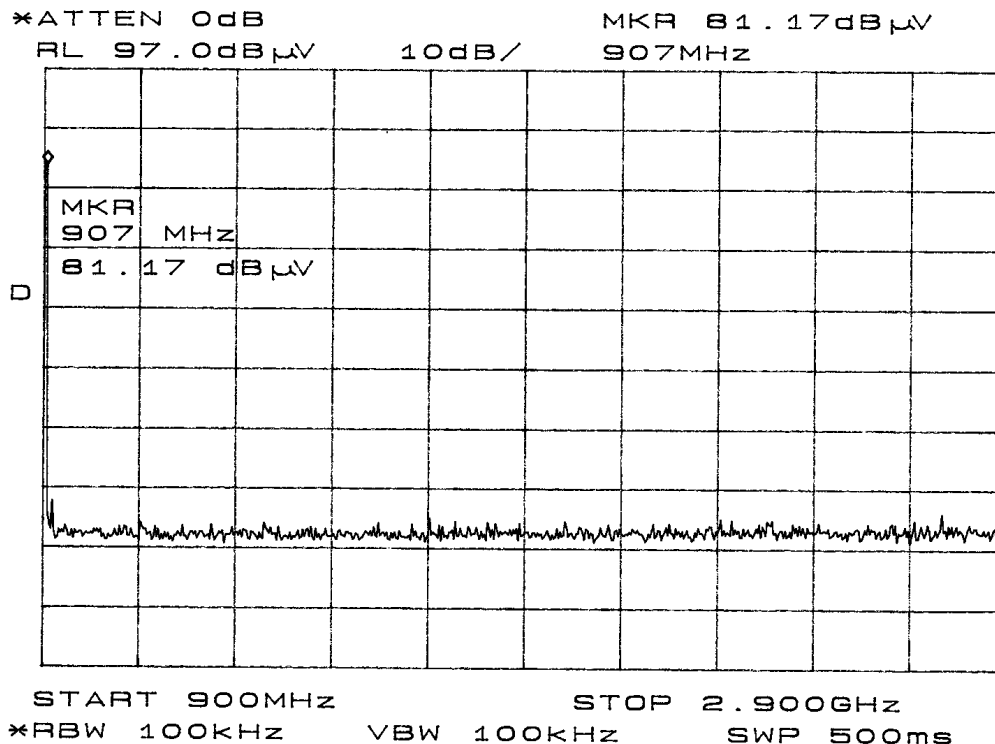


Figure three Radiated Emissions Plot

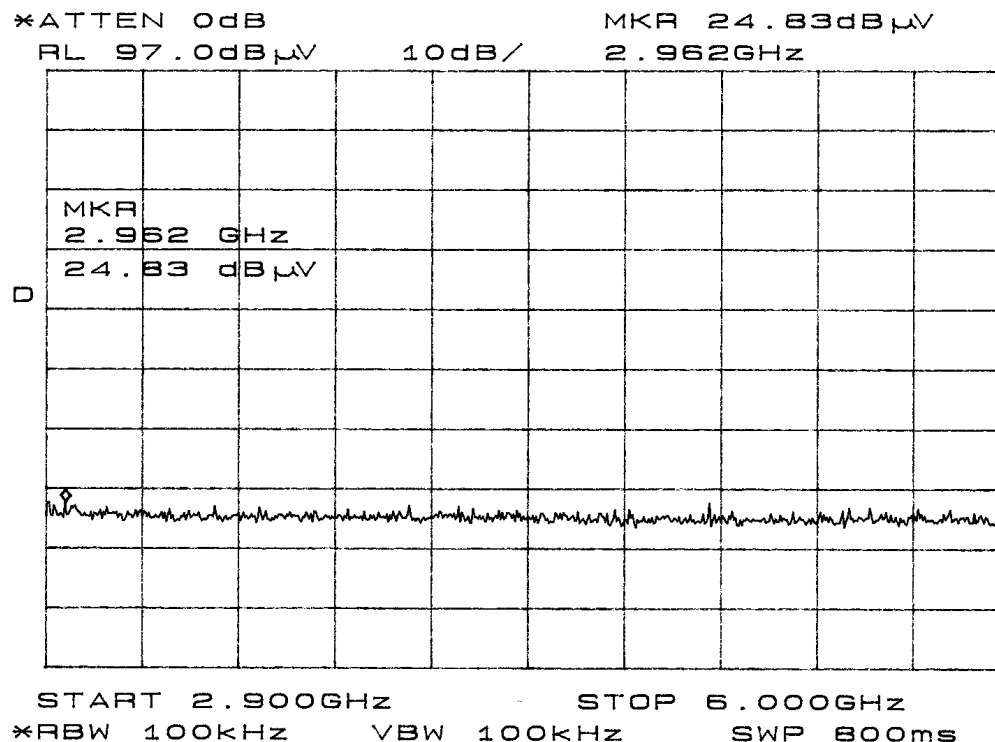


Figure four Radiated Emissions Plot

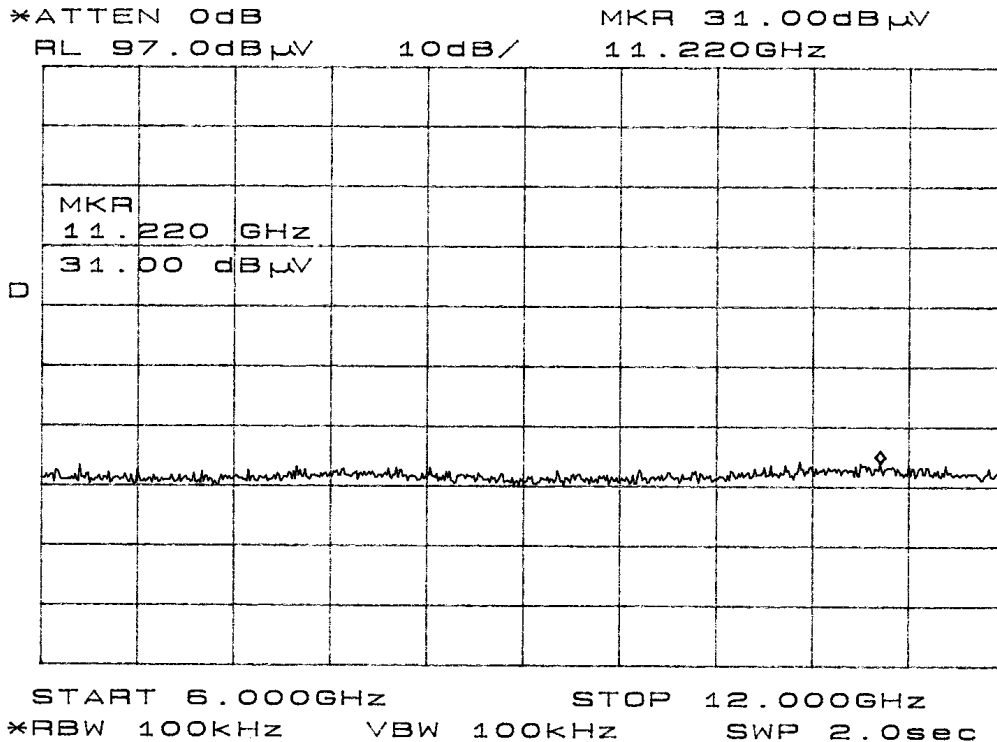


Figure five Radiated Emissions Plot

General Radiated Emissions Data per 15.209

Emission Freq. (MHz)	FSM Horz. (dB μ V)	FSM Vert. (dB μ V)	Ant. Factor (dB)	Amp. Gain (dB)	RFS Horz. @ 3m (dB μ V/m)	RFS Vert. @ 3m (dB μ V/m)	Limit @ 3m (dB μ V/m)

Other emissions were present with amplitudes at least 20 dB below limits.

Summary of Results for General Radiated Emissions per 15.209

The radiated emissions for the EUT meet the requirements for FCC Part 15C and other applicable standards for Intentional Radiators. The EUT had at least a 20 dB minimum margin below the limits. Other emissions were present with amplitudes at least 20 dB below the FCC Limits.

15.249 Operation in the Band 902-928 MHz

The power output was measured on an open field test site @ 3 meters. Test procedures of ANSI 63.4-2003 paragraphs 13.1 and 8.3.1.2 were used during testing. The EUT was placed on a wooden turntable 0.8 meters above the ground plane and at a distance of 3 meters from the FSM antenna. The peak and quasi-peak amplitude of frequencies below 1000 MHz were measured using a spectrum analyzer.

The peak and average amplitude of frequencies above 1000 MHz were measured using a spectrum analyzer. The amplitude of each emission was then recorded from the analyzer display. Emissions radiated outside of the specified bands, except for harmonics, shall be attenuated by at least 50 dB below the level of the fundamental or to the general radiated emission limits in 15.209, whichever is the lesser attenuation. Refer to figures six and seven showing the frequency and amplitude of emission displayed on the spectrum analyzer demonstrating compliance. The amplitudes of each spurious emission were measured at the OATS at a distance of 3 meters from the FSM antenna. The amplitude of each radiated emission was maximized by varying the FSM antenna height, polarization, and by rotating the turntable. A Biconilog Antenna was used for measuring emissions from 30 to 1000 MHz, a Log Periodic Antenna for 200 to 5000 MHz, and Double-ridge horn and/or Pyramidal Horn Antennas from 4 GHz to 25 GHz. Emissions were measured in dBμV/m @ 3 meters.

Sample calculation.

$$\begin{aligned} \text{dB}\mu\text{V/m@ 3m} &= \text{FSM} + \text{A.F.} + \text{cable loss} - \text{amplifier Gain} \\ &= 86.2 + 23.3 - 30 \\ &= 79.5 \end{aligned}$$

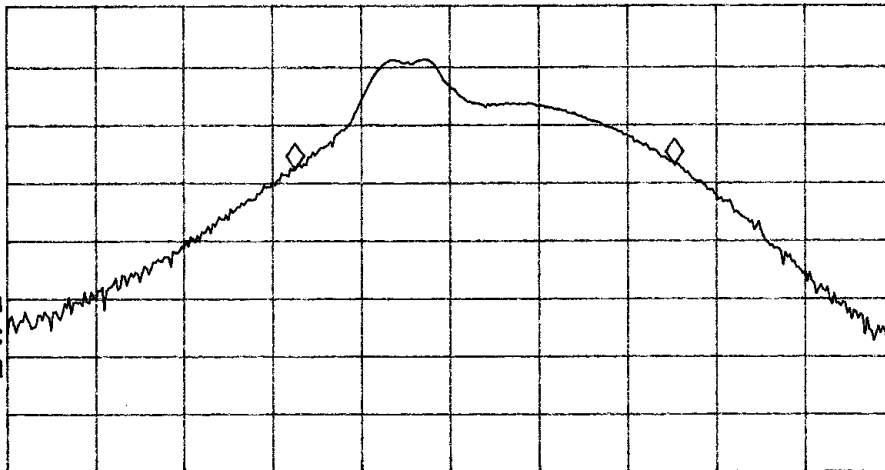
MARKER Δ
855 kHz
.77 dB

ACTV DET: PEAK
MEAS DET: PEAK QP
MKR 855 kHz
.77 dB

LOG REF 90.0 dB μ V

10
dB/
#ATN
0 dB

MA SB
SC FC
CORR



CENTER 916.560 MHz

#IF BW 120 kHz

AVG BW 300 kHz

SPAN 2.000 MHz

SWP 20.0 msec

Figure six Occupied Bandwidth

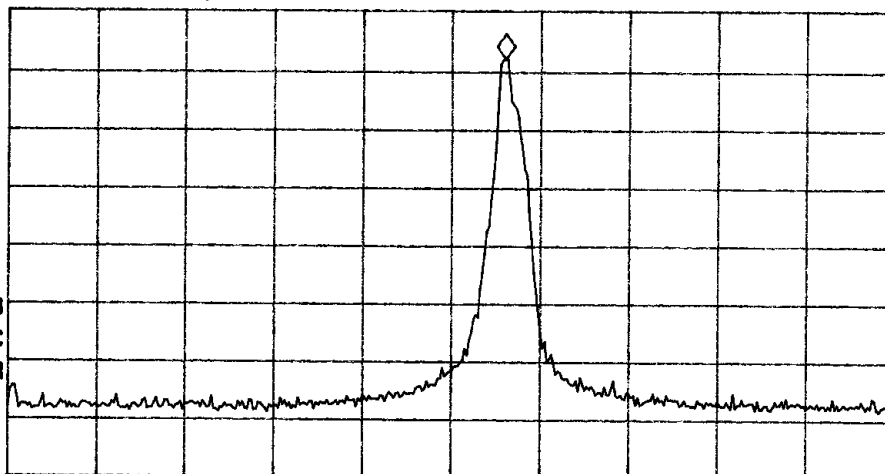
MARKER
916.56 MHz
81.73 dB μ V

ACTV DET: PEAK
MEAS DET: PEAK QP
MKR 916.56 MHz
81.73 dB μ V

LOG REF 90.0 dB μ V

10
dB/
#ATN
0 dB

MA SB
SC FC
CORR



START 902.00 MHz

#IF BW 120 kHz

AVG BW 300 kHz

STOP 928.00 MHz

SWP 20.0 msec

Figure seven Operation in Frequency Band

Transmitter Radiated Emissions Data per 15.249

Emission Frequency (MHz) (polarization)	FSM Peak (dBμV)	Ant. Factor (dB)	Amplifier Gain (dB)	RFS Peak @ 3m (dBμV/m)	Limit @ 3m (ave) (dBμV/m)
916.6 H	86.2	23.3	30	79.5	94
916.6 V	96.6	23.3	30	89.9	94
1833.1	33.6	29.4	30	33.0	54
1833.1	32.3	29.4	30	31.7	54
2749.7	26.0	34.3	30	30.3	54
2749.7	26.3	34.3	30	30.6	54
3666.2	27.5	38.0	30	35.5	54
3666.2	24.7	38.0	30	32.7	54
4582.8	28.6	41.2	30	39.8	54
4582.8	23.0	41.2	30	34.2	54
5499.4	23.8	33.1	30	26.9	54
5499.4	26.0	33.1	30	29.1	54

Note: Levels measured @ 3-meter OATS site.

Summary of Results for Transmitter Radiated Emissions per 15.249

The EUT had a peak amplitude emission 4.1 dB margin below the average limit of CFR47 15.249. The EUT had Peak harmonic emission amplitude of 14.2 dB margin below the average limit of 15.209 and 15.249. The radiated emissions for the EUT meet the requirements for FCC CFR47 Part 15.249 and other applicable standards for Intentional Radiators. There were no measurable emissions in the restricted bands other than those recorded in this report. Other emissions were present with amplitudes at least 20 dB below the FCC Limits.



NVLAP Lab Code 200087-0

Annex

- Annex A, Measurement Uncertainty Calculations
- Annex B, Test Equipment List.
- Annex C, Rogers Qualifications.
- Annex D, FCC Site Approval Letter.
- Annex E, Industry Canada Approval Letter.

Annex A Measurement Uncertainty Calculations

Radiated Emissions Measurement Uncertainty Calculation

Measurement of vertically polarized radiated field strength over the frequency range 30 MHz to 1 GHz on an open area test site at 3m and 10m includes following uncertainty:

Contribution	Probability Distribution	Uncertainty (dB)
Antenna factor calibration	normal (k = 2)	±0.58
Cable loss calibration	normal (k = 2)	±0.2
Receiver specification	rectangular	±1.0
Antenna directivity	rectangular	±0.1
Antenna factor variation with height	rectangular	±2.0
Antenna factor frequency interpolation	rectangular	±0.1
Measurement distance variation	rectangular	±0.2
Site Imperfections	rectangular	±1.5
Combined standard uncertainty $u_c(y)$ is		

$$U_c(y) = \pm \sqrt{\left[\frac{1.0}{2}\right]^2 + \left[\frac{0.2}{2}\right]^2 + \left[\frac{1.0^2 + 0.1^2 + 2.0^2 + 0.1^2 + 0.2^2 + 1.5^2}{3}\right]}$$

$$U_c(y) = \pm 1.6 \text{ dB}$$

It is probable that $u_c(y) / s(q_k) > 3$, where $s(q_k)$ is estimated standard deviation from a sample of n readings unless the repeatability of the EUT is particularly poor, and a coverage factor of $k = 2$ will ensure that the level of confidence will be approximately 95%, therefore:

$$s(q_k) = \sqrt{\frac{1}{(n-1)} \sum_{k=1}^n (q_k - \bar{q})^2}$$

$$U = 2 U_c(y) = 2 \times \pm 1.6 \text{ dB} = \pm 3.2 \text{ dB}$$

Notes:

- 1.1 Uncertainties for the antenna and cable were estimated, based on a normal probability distribution with $k = 2$.
- 1.2 The receiver uncertainty was obtained from the manufacturer's specification for which a rectangular distribution was assumed.
- 1.3 The antenna factor uncertainty does not take account of antenna directivity.
- 1.4 The antenna factor varies with height and since the height was not always the same in use as when the antenna was calibrated an additional uncertainty is added.
- 1.5 The uncertainty in the measurement distance is relatively small but has some effect on the received signal strength. The increase in measurement distance as the antenna height is increased is an inevitable consequence of the test method and is therefore not considered a contribution to uncertainty.
- 1.6 Site imperfections are difficult to quantify but may include the following contributions:
 - Unwanted reflections from adjacent objects.
 - Ground plane imperfections: reflection coefficient, flatness, and edge effects.
 - Losses or reflections from "transparent" cabins for the EUT or site coverings.
 - Earth currents in antenna cable (mainly effect biconical antennas).

The specified limits for the difference between measured site attenuation and the theoretical value (± 4 dB) were not included in total since the measurement of site attenuation includes uncertainty contributions already allowed for in this budget, such as antenna factor.

Conducted Measurements Uncertainty Calculation

Measurement of conducted emissions over the frequency range 9 kHz to 30 MHz includes following uncertainty:

Contribution	Probability Distribution	Uncertainty (dB)
Receiver specification	rectangular	±1.5
LISN coupling specification	rectangular	±1.5
Cable and input attenuator calibration	normal (k=2)	±0.5
Combined standard uncertainty $u_c(y)$ is		

$$U_c(y) = \pm \sqrt{\left[\frac{0.5}{2}\right]^2 + \frac{1.5^2 + 1.5^2}{3}}$$

$$U_c(y) = \pm 1.2 \text{ dB}$$

As with radiated field strength uncertainty, it is probable that $u_c(y) / s(q_k) > 3$ and a coverage factor of $k = 2$ will suffice, therefore:

$$U = 2 U_c(y) = 2 \times \pm 1.2 \text{ dB} = \pm 2.4 \text{ dB}$$



Annex B Test Equipment List For Rogers Labs, Inc.

The test equipment used is maintained in calibration and good operating condition. Use of this calibrated equipment ensures measurements are traceable to national standards.

List of Test Equipment	Calibration Date
Oscilloscope Scope: Tektronix 2230	2/07
Wattmeter: Bird 43 with Load Bird 8085	2/07
Power Supplies: Sorensen SRL 20-25, SRL 40-25, DCR 150, DCR 140	2/07
H/V Power Supply: Fluke Model: 408B (SN: 573)	2/07
R.F. Generator: HP 606A	2/07
R.F. Generator: HP 8614A	2/07
R.F. Generator: HP 8640B	2/07
Spectrum Analyzer: HP 8562A,	2/07
Mixers: 11517A, 11970A, 11970K, 11970U, 11970V, 11970W	
HP Adapters: 11518, 11519, 11520	
Spectrum Analyzer: HP 8591EM	5/07
Frequency Counter: Leader LDC825	2/07
Antenna: EMCO Biconilog Model: 3143	5/07
Antenna: EMCO Log Periodic Model: 3147	10/07
Antenna: Antenna Research Biconical Model: BCD 235	10/07
Antenna: EMCO Dipole Set 3121C	2/07
Antenna: C.D. B-101	2/07
Antenna: Solar 9229-1 & 9230-1	2/07
Antenna: EMCO 6509	2/07
Audio Oscillator: H.P. 201CD	2/07
R.F. Power Amp 65W Model: 470-A-1010	2/07
R.F. Power Amp 50W M185- 10-501	2/07
R.F. PreAmp CPPA-102	2/07
LISN 50 μ Hy/50 ohm/0.1 μ f	10/07
LISN Compliance Eng. 240/20	2/07
LISN Fischer Custom Communications FCC-LISN-50-16-2-08	2/07
Peavey Power Amp Model: IPS 801	2/07
Power Amp A.R. Model: 10W 1010M7	2/07
Power Amp EIN Model: A301	2/07
ELGAR Model: 1751	2/07
ELGAR Model: TG 704A-3D	2/07
ESD Test Set 2010i	2/07
Fast Transient Burst Generator Model: EFT/B-101	2/07
Current Probe: Singer CP-105	2/07
Current Probe: Solar 9108-1N	2/07
Field Intensity Meter: EFM-018	2/07
KEYTEK Ecat Surge Generator	2/07
Shielded Room 5 M x 3 M x 3.0 M	



Annex C Qualifications

SCOT D. ROGERS, ENGINEER

ROGERS LABS, INC.

Mr. Rogers has approximately 17 years experience in the field of electronics. Six years working in the automated controls industry and 6 years working with the design, development and testing of radio communications and electronic equipment.

POSITIONS HELD:

Systems Engineer: A/C Controls Mfg. Co., Inc. 6 Years

Electrical Engineer: Rogers Consulting Labs, Inc. 5 Years

Electrical Engineer: Rogers Labs, Inc. Current

EDUCATIONAL BACKGROUND:

- 1) Bachelor of Science Degree in Electrical Engineering from Kansas State University
- 2) Bachelor of Science Degree in Business Administration Kansas State University
- 3) Several Specialized Training courses and seminars pertaining to Microprocessors and Software programming.



NVLAP Lab Code 200087-0

Annex D FCC Test Site Registration Letter

FEDERAL COMMUNICATIONS COMMISSION

**Laboratory Division
7435 Oakland Mills Road
Columbia, MD 21046**

May 16, 2006

Registration Number: 90910

**Rogers Labs, Inc.
4405 West 259th Terrace
Louisburg, KS 66053**

Attention: Scot Rogers

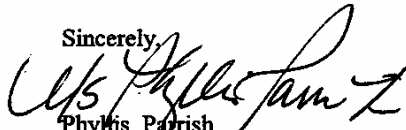
**Re: Measurement facility located at Louisburg
3 & 10 meter site
Date of Renewal: May 16, 2006**

Dear Sir or Madam:

Your request for renewal of the registration of the subject measurement facility has been received. The information submitted has been placed in your file and the registration has been renewed. The name of your organization will remain on the list of facilities whose measurement data will be accepted in conjunction with applications for Certification under Parts 15 or 18 of the Commission's Rules. Please note that the file must be updated for any changes made to the facility and the registration must be renewed at least every three years.

Measurement facilities that have indicated that they are available to the public to perform measurement services on a fee basis may be found on the FCC website www.fcc.gov under E-Filing, OET Equipment Authorization Electronic Filing, Test Firms.

Sincerely,



**Phyllis Parrish
Information Technician**



NVLAP Lab Code 200087-0

Annex E Industry Canada Test Site Registration Letter



May 23rd, 2006

OUR FILE: 46405-3041

Submission No: 115252

Rogers Labs Inc.
4405 West 259th Terrace
Louisburg, KY
USA 66053

Dear Sir/Madame:

The Bureau has received your application for the Alternate Test Site or OATS and the filing is satisfactory to Industry Canada.

Please reference to the file number (3041-1) in the body of all test reports containing measurements performed on the site.

In the future, to obtain or renew a unique registration number, you may demonstrate that the site has been accredited to ANSI C63.4-2003 or later.

If the site is not accredited to ANSI C63.4-2003 or later, the test facility shall submit test data demonstrating conformance with the ANSI standard. The Department will evaluate the filing to determine if recognition shall be granted.

The frequency for re-validation of the test site and the information that is required to be filed or retained by the testing party shall comply with the requirements established by the accrediting organization. However, in all cases, test site re-validation shall occur on an interval not to exceed two years.

If you have any questions, you may contact the Bureau by e-mail at certification.bureau@ic.gc.ca
Please reference our file number above for all correspondence.

Yours sincerely,

Robert Corey
Manager Certification
Certification and Engineering Bureau
3701 Carling Ave., Building 94
Ottawa, Ontario K2H 8S2