

Regulatory Approvals

FCC Statement

This equipment has been tested and found to comply with the limits for a Class B digital device, pursuant to Part 15 of the FCC Rules. These limits are designed to provide reasonable protection against harmful interference in a residential installation.

This equipment generates, uses and can radiate radio frequency energy and, if not installed and used in accordance with the instructions, may cause harmful interference to radio communications. However, there is no guarantee that interference will not occur in a particular installation. If this equipment does cause harmful interference to radio or television reception, which can be determined by turning the equipment off and on, the user is encouraged to try to correct the interference by one of the following measures:

Reorient or relocate the receiving antenna.

Increase the separation between the equipment and receiver.

Connect the equipment into an outlet on a circuit different from that to which the receiver is connected.

Consult the dealer or an experienced radio/TV technician for help.

To assure continued compliance, any changes or modifications not expressly approved by the party responsible for compliance could void the user's authority to operate this equipment. (Example - use only shielded interface cables when connecting to computer or peripheral devices).

FCC Radiation Exposure Statement

This equipment complies with FCC RF radiation exposure limits set forth for an uncontrolled environment. This equipment should be installed and operated with a minimum distance of 20 centimeters between the radiator and your body.

This device complies with Part 15 of the FCC Rules. Operation is subject to the following two conditions:

- (1) This device may not cause harmful interference, and
- (2) This device must accept any interference received, including interference that may cause undesired operation.

This transmitter must not be co-located or operating in conjunction with any other antenna or transmitter.

The antennas used for this transmitter must be installed to provide a separation distance of at least 20 cm from all persons and must not be co-located or operating in conjunction with any other antenna or transmitter.

Channel

The Wireless Channel sets the radio frequency used for communication.

- Access Points use a fixed Channel. You can select the Channel used. This allows you to choose a Channel which provides the least interference and best performance. In the USA and Canada, 11 channels are available. If using multiple Access Points, it is better if adjacent Access Points use different Channels to reduce interference.
- In "Infrastructure" mode, Wireless Stations normally scan all Channels, looking for an Access Point. If more than one Access Point can be used, the one with the strongest signal is used. (This can only happen within an ESS.)
- If using "Ad-hoc" mode (no Access Point), all Wireless stations should be set to use the same Channel. However, most Wireless stations will still scan all Channels to see if there is an existing "Ad-hoc" group they can join.

Note:

This equipment marketed in USA is restricted by firmware to only operate on 2.4G channel 1-11

SAP30g Super Access Point Installation Guide

Version 1.1.0 (4/28/2006)

Content :

1	Installation.....	3
1.1	Package list	3
1.2	Hardware Installation.....	3
2	How to Start	3
2.1	Before start to configure	3
2.2	What the SAP30g acts	3
2.2.1	Access Point.....	3
2.2.2	Client.....	3
2.2.3	WDS.....	3
2.2.4	WDS + AP	3
2.2.5	AP + Repeater	3
3	Configuration	4
3.1	Configure AP by Wizard	4
3.1.1	Open configuration page http://192.168.1.250 ,	4
3.1.2	After password check, wizard will be executed.....	4
3.1.3	LAN Interface Setup	5
3.1.4	Wireless Basic Setting	5
3.1.4.1	AP setting	6
3.1.4.2	Client Setting	6
3.1.4.3	WDS Setting	7
3.1.4.4	WDS+AP Setting	7
3.1.5	Wireless Security Setup	8
3.1.5.1	Security (WEP)	8
3.1.5.2	Security WPA(TKIP)	9
3.1.5.3	Security WPA2 (AES).....	9
3.1.5.4	Security WPA2 (Mixed).....	10
3.1.6	Finish.....	10
3.2	Configure manually	11
3.2.1	AP Configuration	11
3.2.2	Client Configuration	11

3.2.3	AP+Repeater Configuration	12
3.2.4	WDS Configuration	12
3.2.5	WDS+AP Configure	13
3.2.6	Security Configuration.....	14
3.2.6.1	Set WEP, at Security page.....	14
3.2.6.2	Set WEP, 802.1x authentication.....	15
3.2.6.3	Set WPA, At Security page	15
3.2.6.4	Set WPA, At Security page	16
3.2.6.5	Set WPA2, At Security page	16
3.2.6.6	Set WPA2, At Security page	17
3.2.6.7	Set WPA2 mixed, At Security page	17
3.2.7	Access Control.....	18
3.2.8	Easy Config.....	18
3.2.8.1	Button mode.....	18
3.2.8.2	Q&A mode	19
3.2.9	TCP/IP.....	19
4	System Tools	20
4.1	Status.....	20
4.2	Log	20
4.3	Statistic.....	21
4.4	Upgrade Firmware	21
4.5	Save/Reload Setting	22
4.6	Password	22
5	FCC Warning	23

1 Installation

1.1 Package list

1.2 Hardware Installation

2 How to Start

2.1 Before start to configure

Default IP : 192.168.1.250

Default Mask : 255.255.255.0

Default DHCP is running , client range : 192.168.1.100~192.168.1.200

(If there is a DHCP server existing in the network, disable the DHCP server of AP)

Default User Name/Password : admin / 12345

Configure AP by typing <http://192.168.1.250> in the address field of Internet Explorer or Netscape Navigator

Notices AP and computer must in the same network subnet.

2.2 What the SAP30g acts

2.2.1 Access Point

An Access Point is a specially configured node on a wireless network that bridges the wireless LAN and a wired LAN.

2.2.2 Client

Client mode allows SAP30g connect to AP.

Attach wireless ability to personal computer or laptop by connecting Ethernet port directly.

2.2.3 WDS

Wireless Distribution System is a system that enables the interconnection of Access Points wirelessly.

Notice the client can't survey and connect to WDS stations.

2.2.4 WDS + AP

This is a hybrid mode that combines WDS and AP functions.

2.2.5 AP + Repeater

Besides the AP functions, it acts as an infrastructure-client, which is able to link to another AP

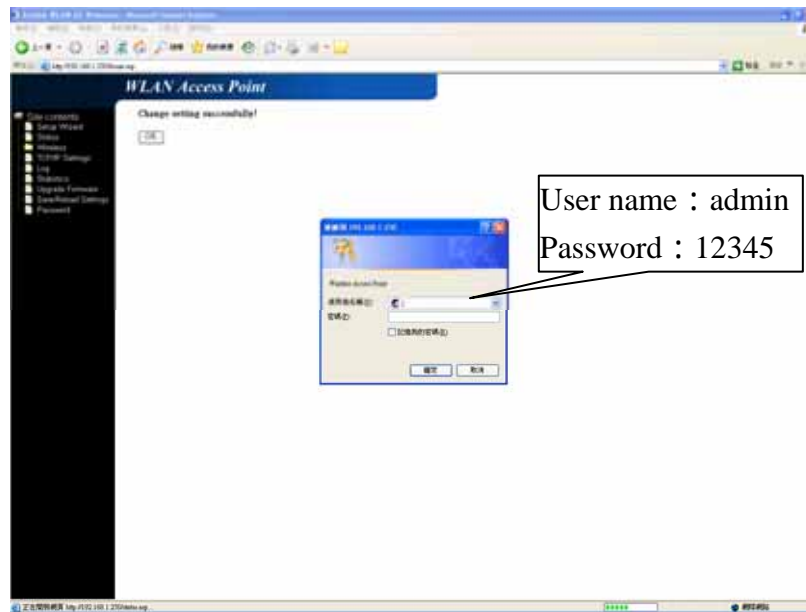
3 Configuration

3.1 Configure AP by Wizard

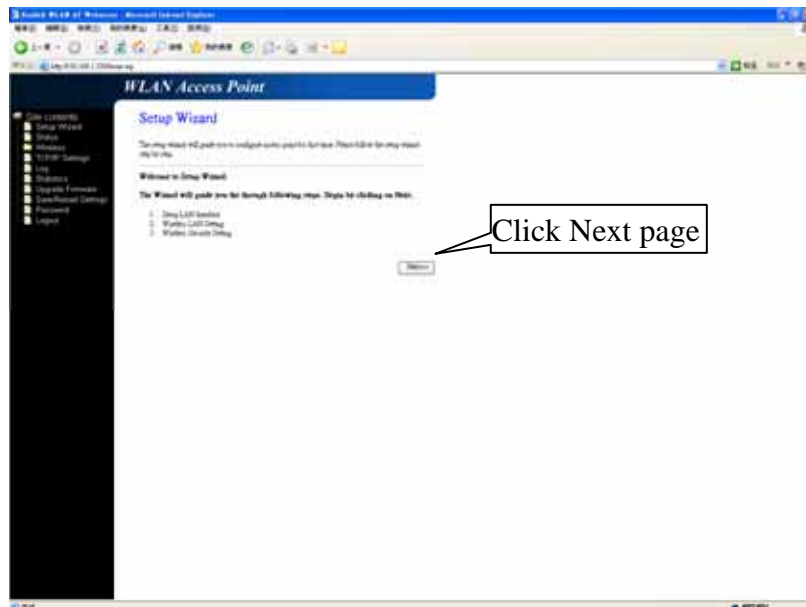
3.1.1 Open configuration page <http://192.168.1.250> ,

It will pop out a dialogue window.

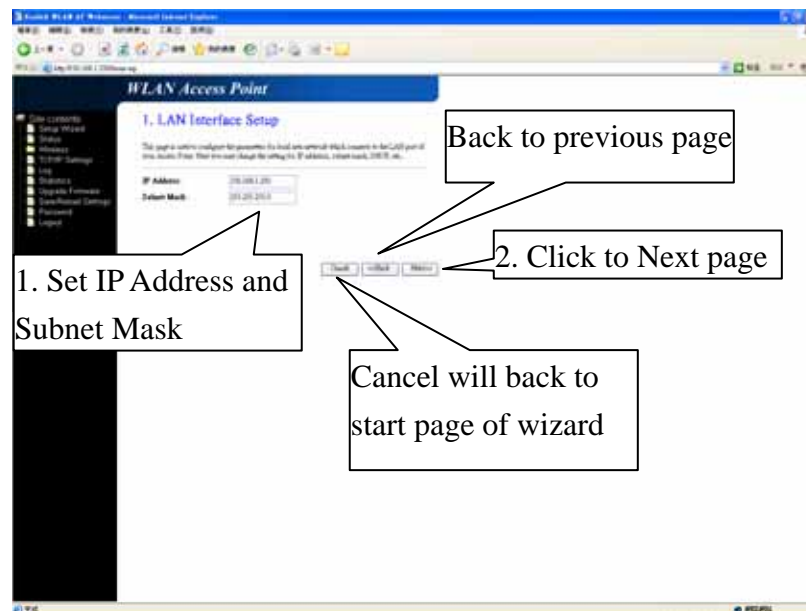
Default user name is [admin](#) and password is [12345](#)



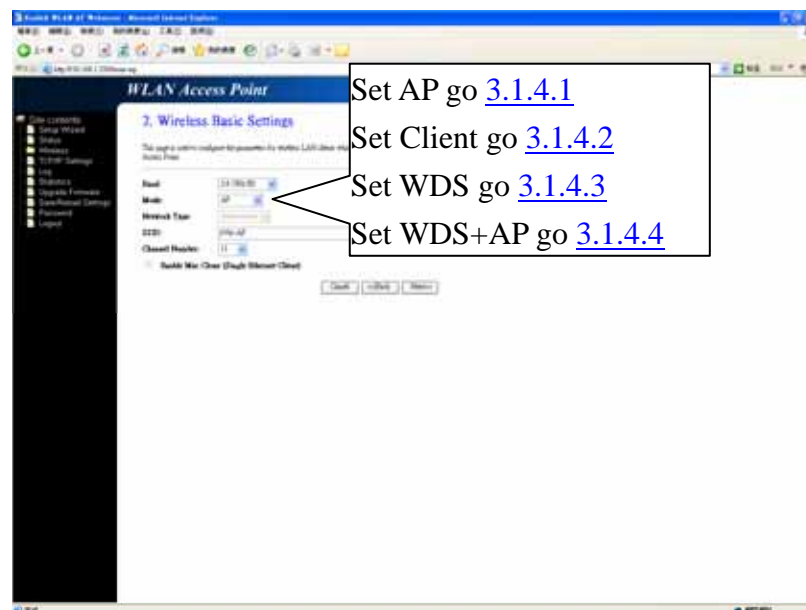
3.1.2 After password check, wizard will be executed.



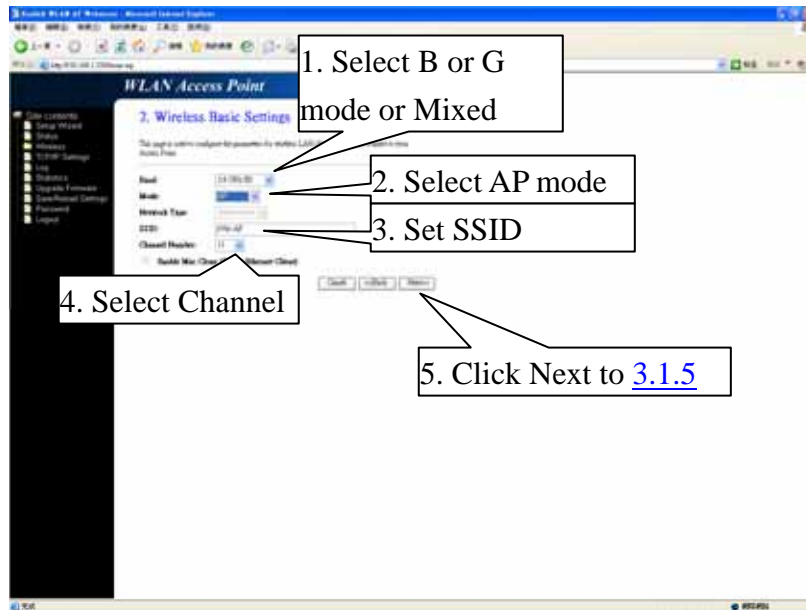
3.1.3 LAN Interface Setup



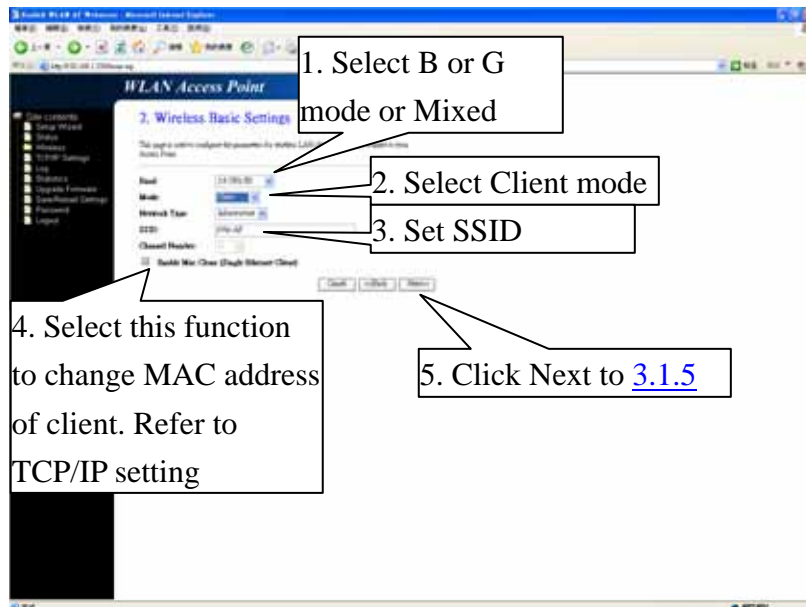
3.1.4 Wireless Basic Setting



3.1.4.1 AP setting



3.1.4.2 Client Setting



3.1.4.3 WDS Setting

1. Select B or G mode or Mixed

2. Select WDS mode

3. Set Channel

4. Click Next to [3.1.5](#)

PS. This step just change the operation mode of SAP30g, the WDS setup is not completed. For more details, please read [WDS configuration](#)

3.1.4.4 WDS+AP Setting

1. Select B or G mode or Mixed

2. Select WDS+AP mode

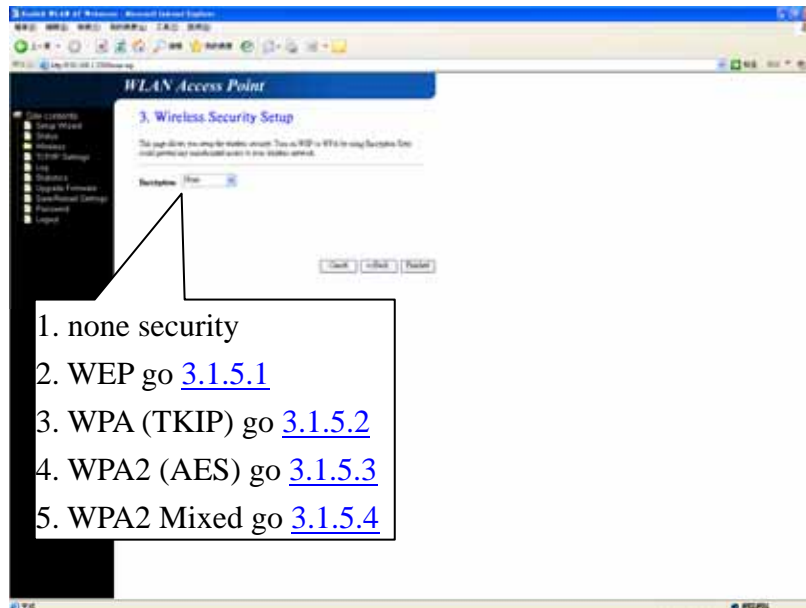
3. Set SSID

4. Set Channel

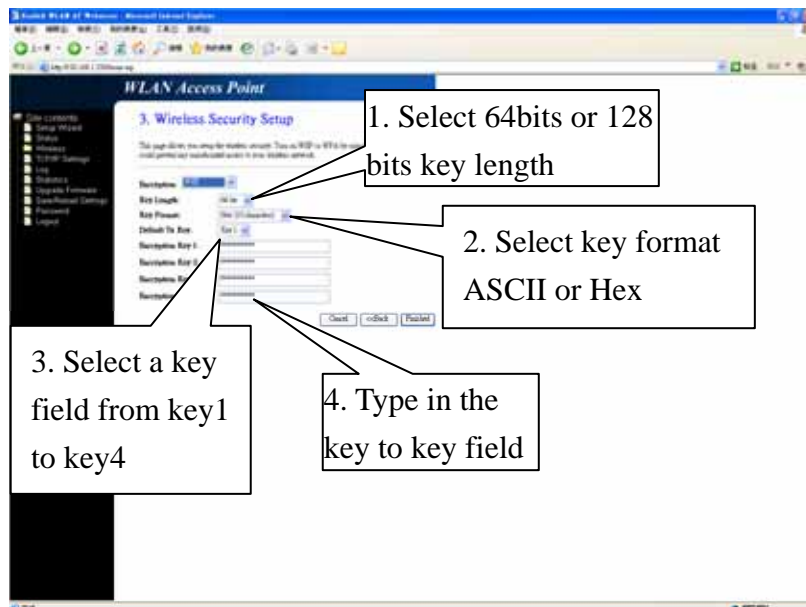
5. Click Next to [3.1.5](#)

PS. This step just change the operation mode of SAP30g, the WDS setup is not completed. For more details, please read [WDS configuration](#)

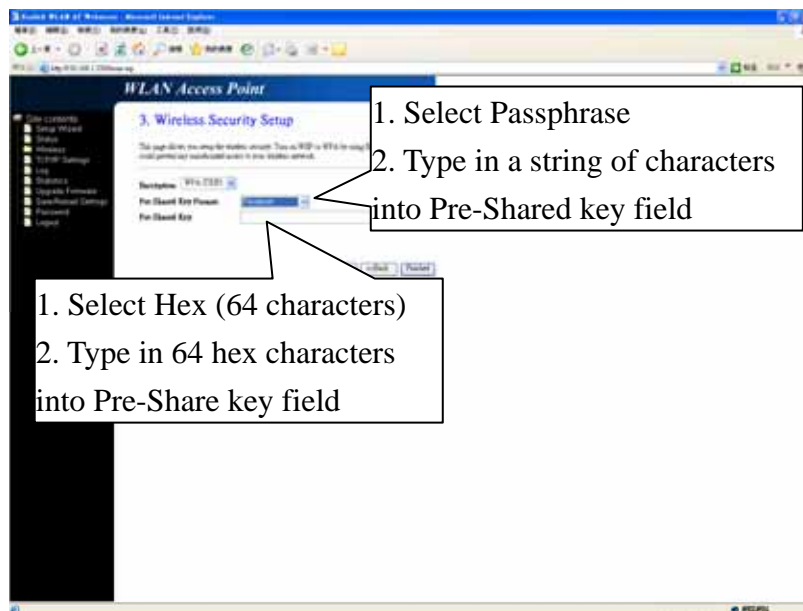
3.1.5 Wireless Security Setup



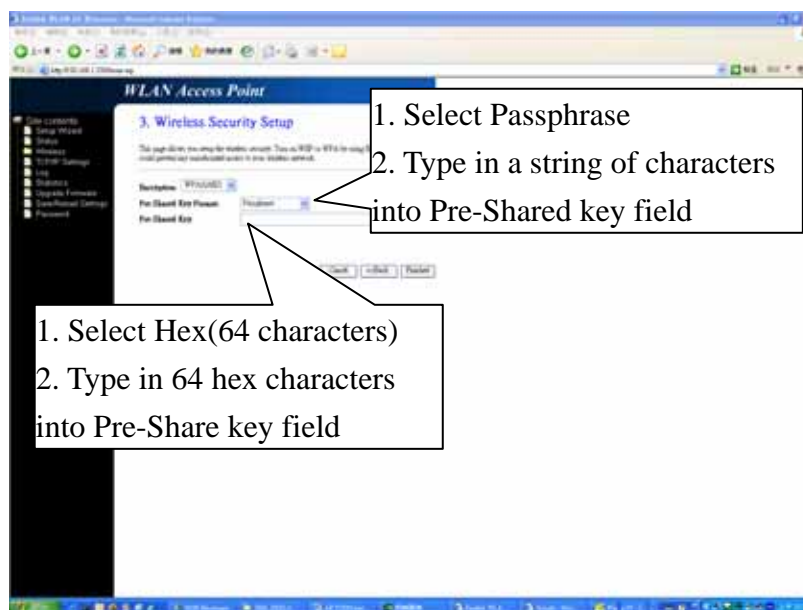
3.1.5.1 Security (WEP)



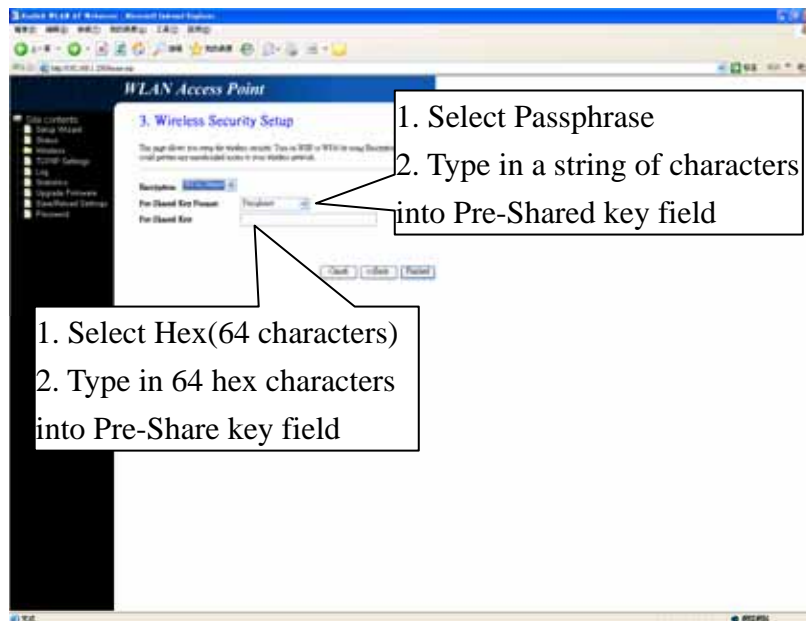
3.1.5.2 Security WPA(TKIP)



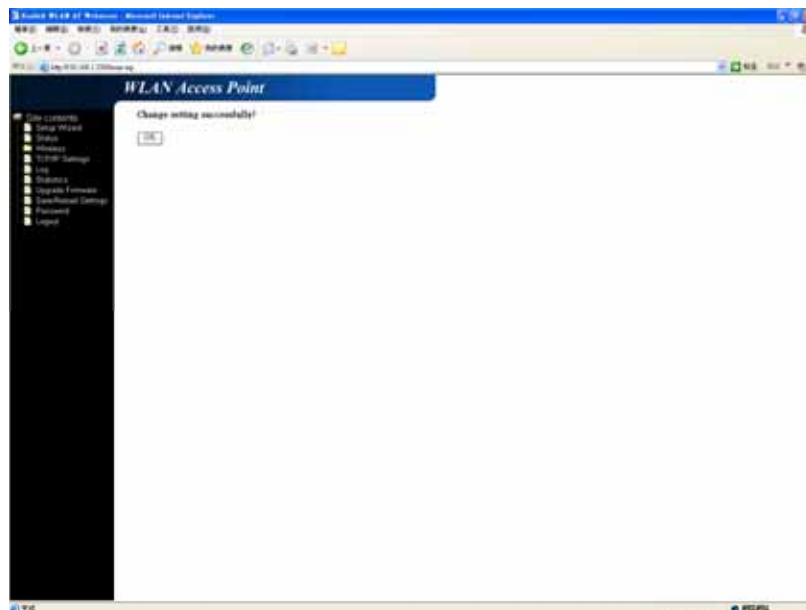
3.1.5.3 Security WPA2 (AES)



3.1.5.4 Security WPA2 (Mixed)



3.1.6 Finish



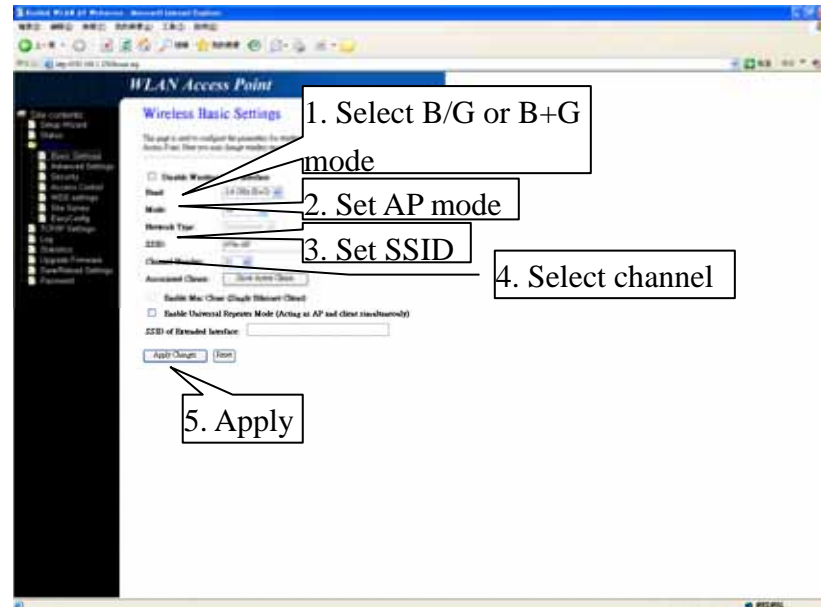
3.2 Configure manually

3.2.1 AP Configuration

Here describes how to setup AP without security setting.

To setup AP with security, please read 3.3.3.

At Basic Setting page :

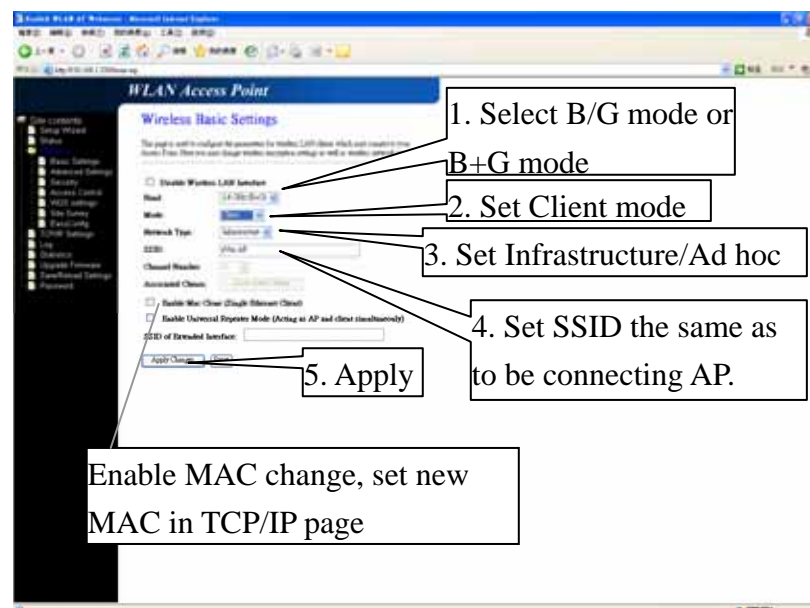


3.2.2 Client Configuration

Notice : Step 3. Infrastructure is for connecting AP and Ad hoc is for connecting another client.

Use Site Survey (3.3.3) to scan and connect to AP

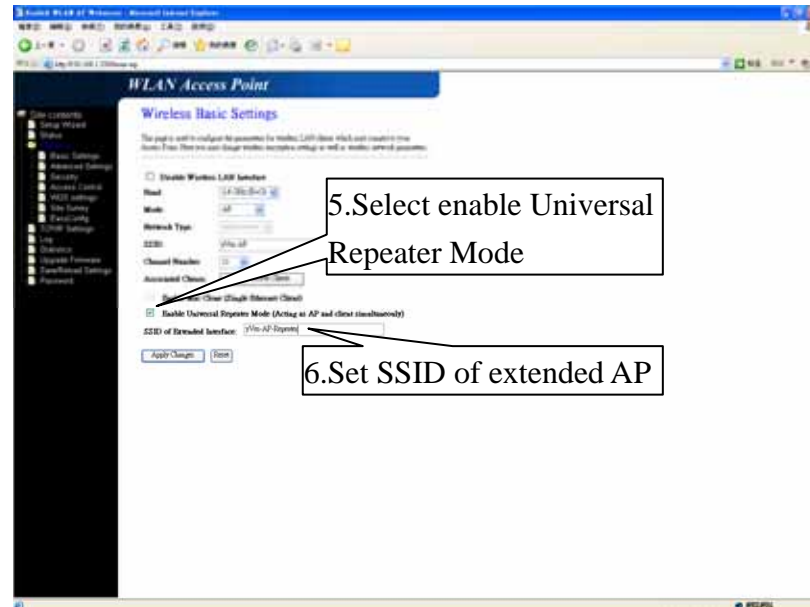
At Basic Setting page :



3.2.3 AP+Repeater Configuration

The step 1~4 is the same as AP setting.

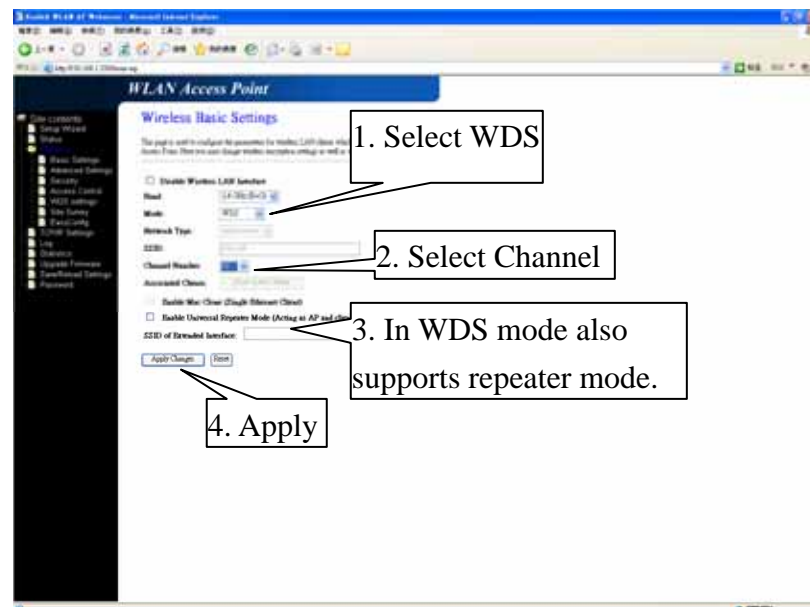
At Basic Setting page :



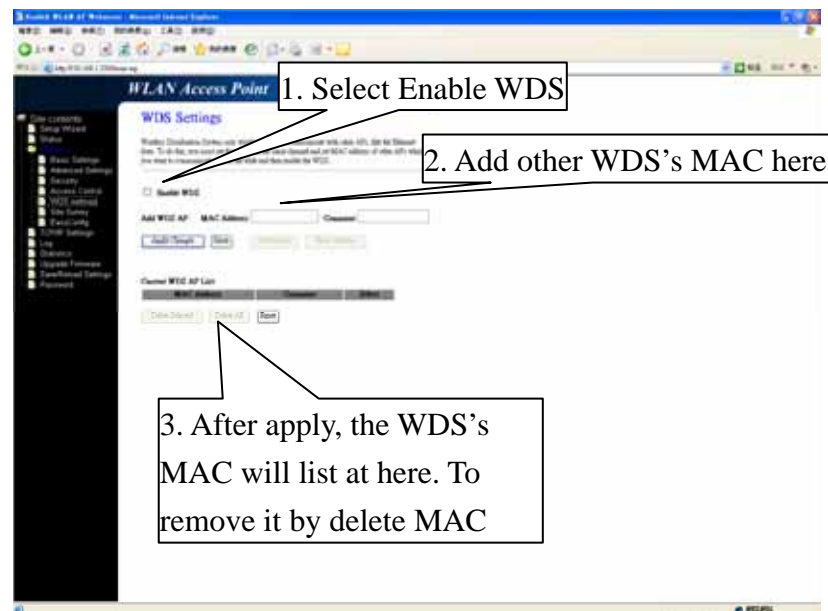
3.2.4 WDS Configuration

At least a pair of AP for setting WDS mode

Step 1. At Basic Setting page :



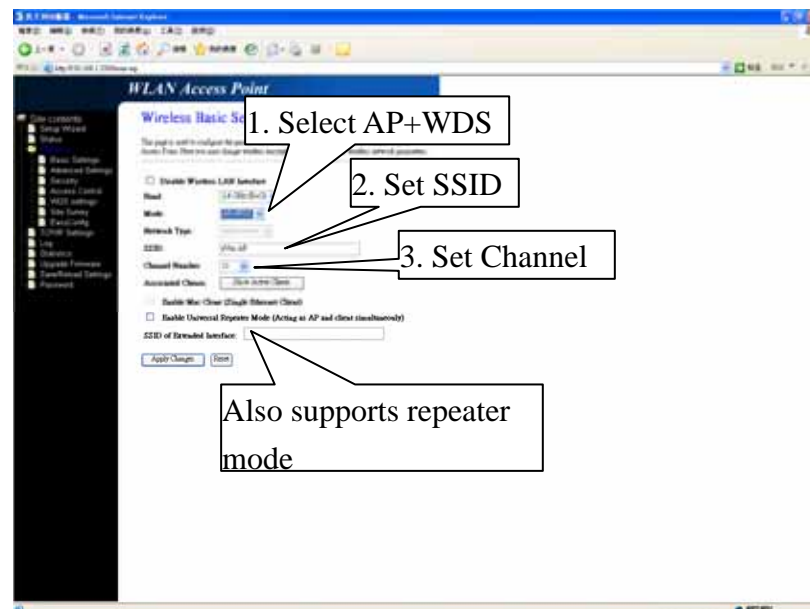
Step 2. At WDS setting



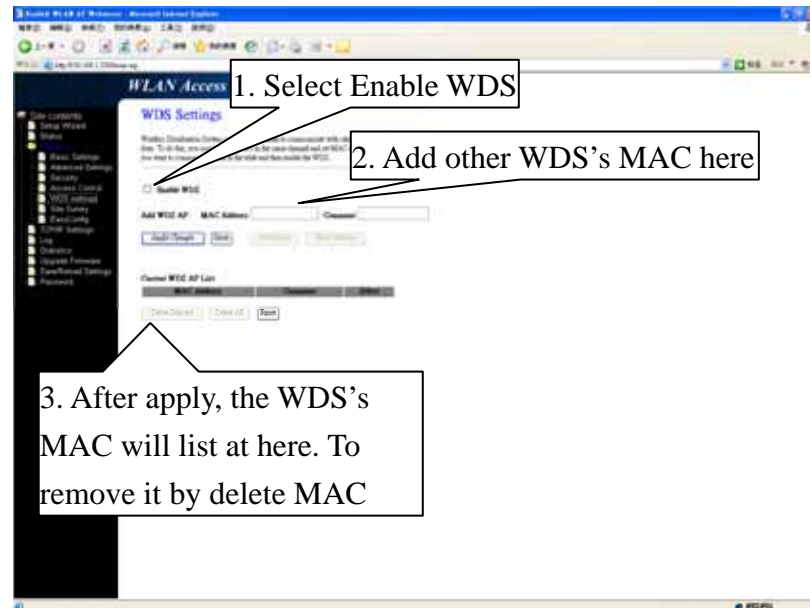
3.2.5 WDS+AP Configure

It combines WDS and AP function together.

Step 1. At Basic Setting page :

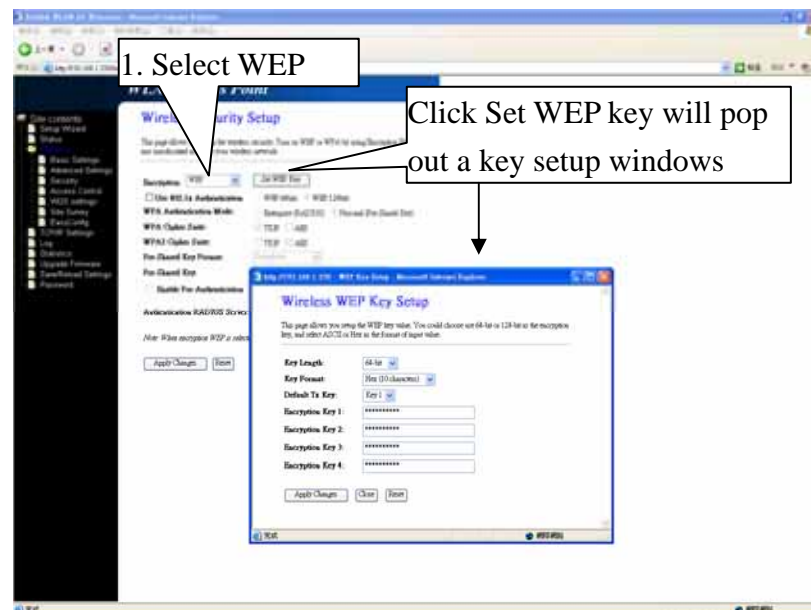


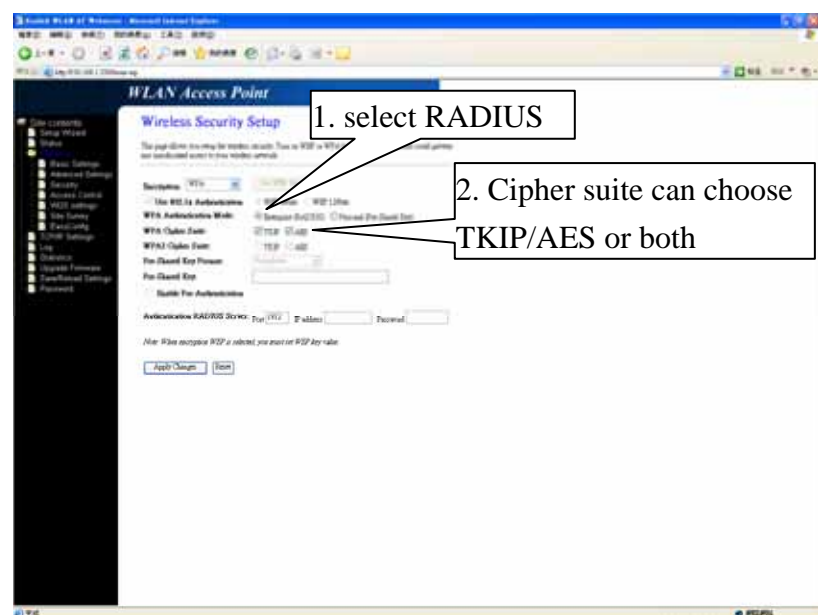
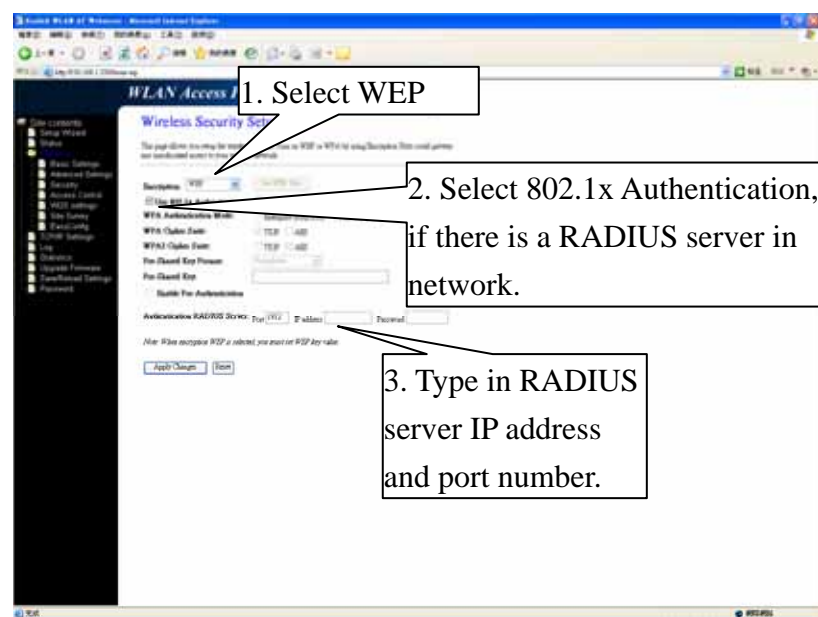
Step 2. At WDS Setting page :



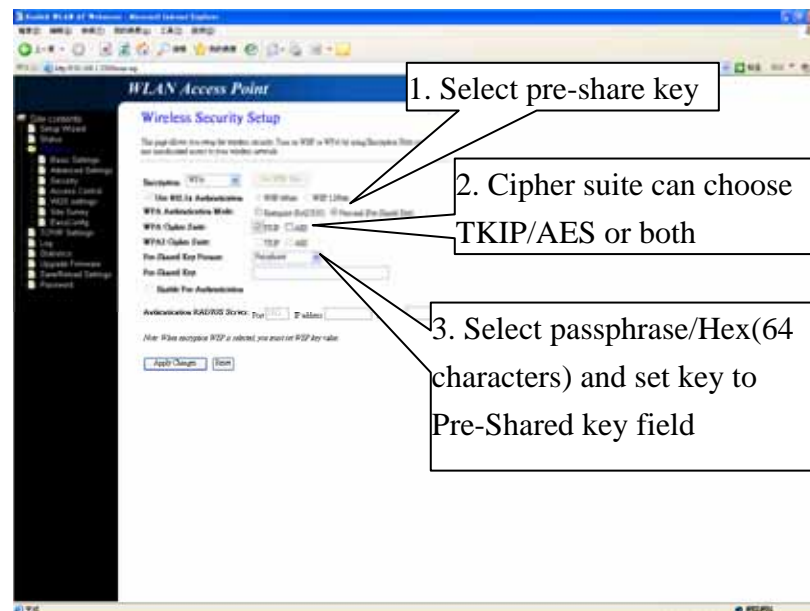
3.2.6 Security Configuration

3.2.6.1 Set WEP, at Security page

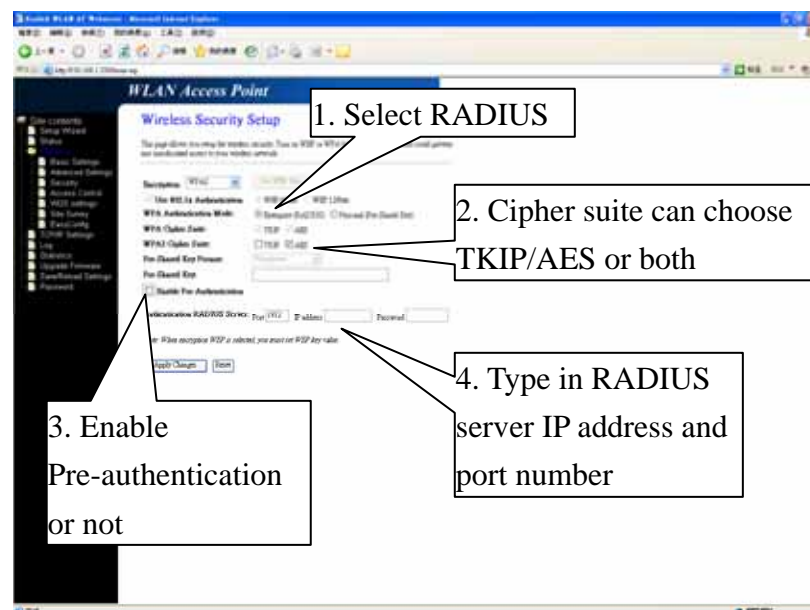




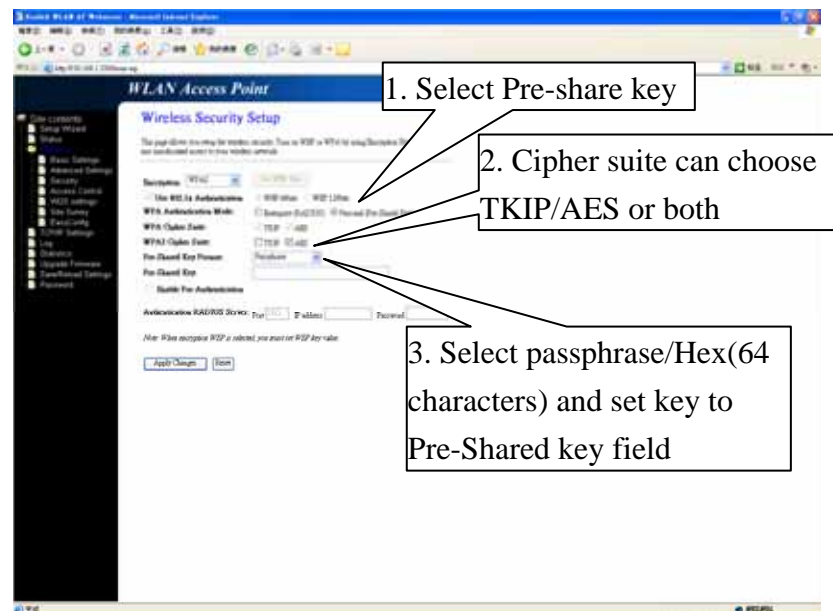
3.2.6.4 Set WPA, At Security page



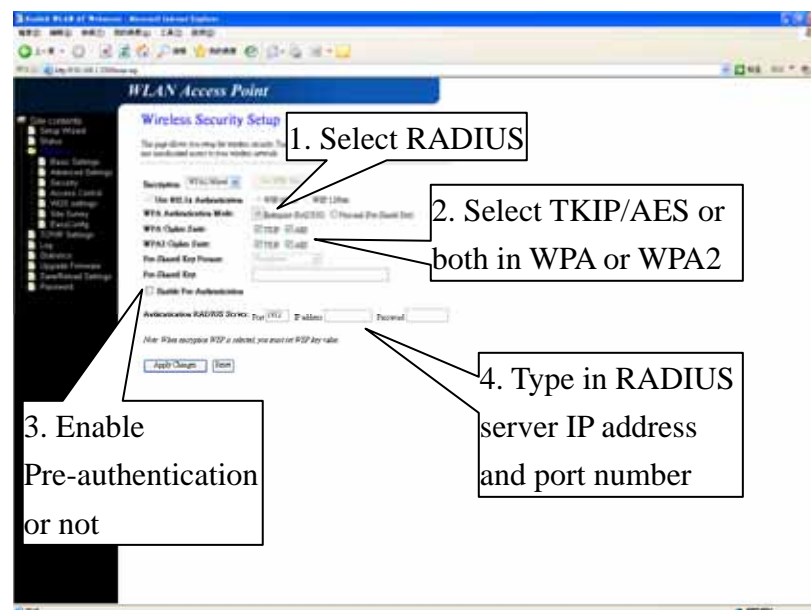
3.2.6.5 Set WPA2, At Security page



3.2.6.6 Set WPA2, At Security page

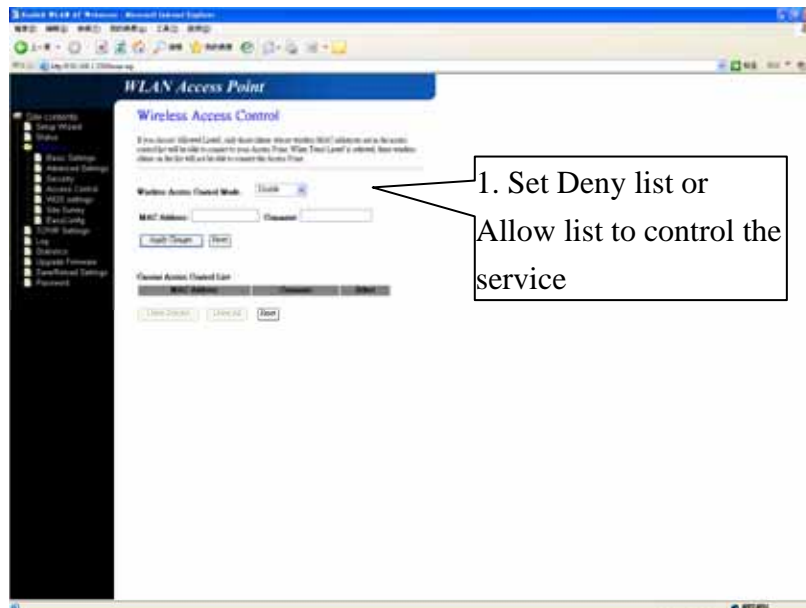


3.2.6.7 Set WPA2 mixed, At Security page



3.2.7 Access Control

At Access Control page



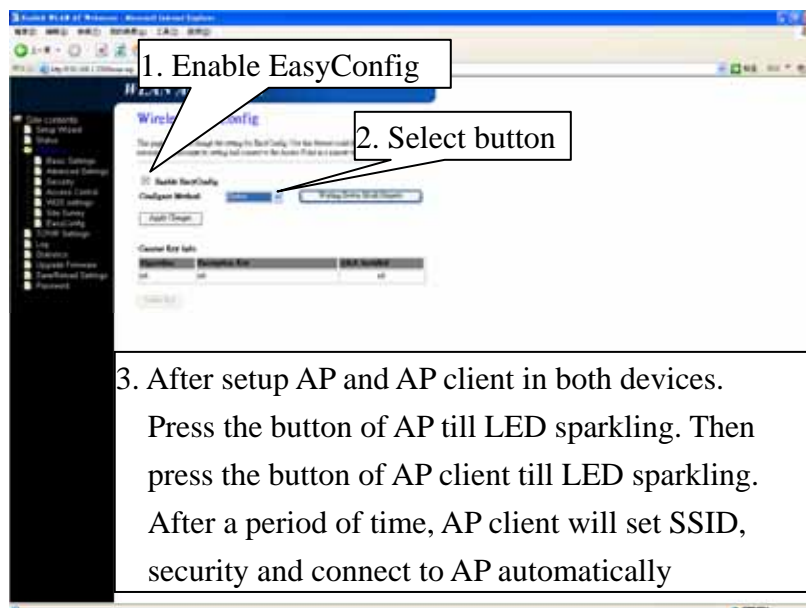
3.2.8 Easy Config

EasyConfig only works in a pair of SAP30g.

It automatically setup two devices to AP and AP client.

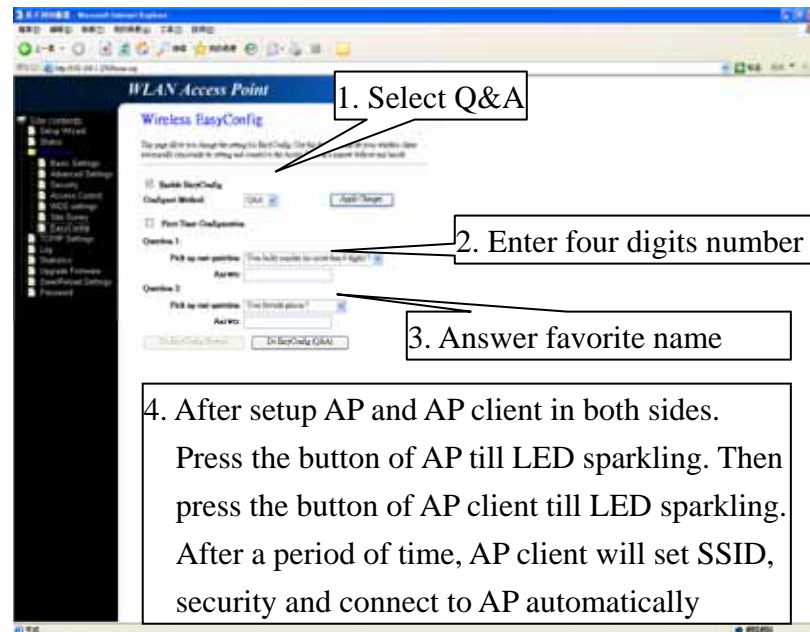
There are two methods to setup (button/Q&A)

3.2.8.1 Button mode

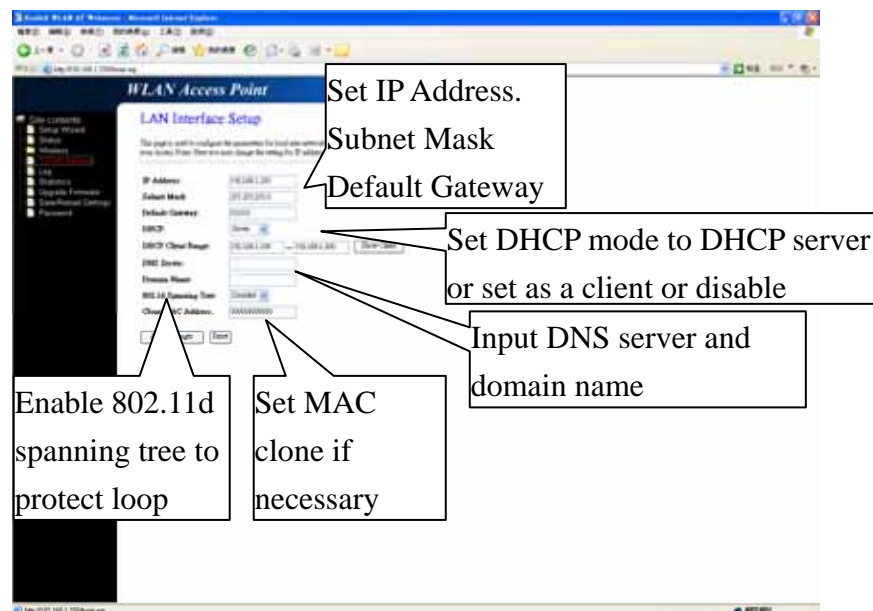


3.2.8.2 Q&A mode

The follow setting is only for AP client. In AP only need set allow Q&A or button+Q&A.



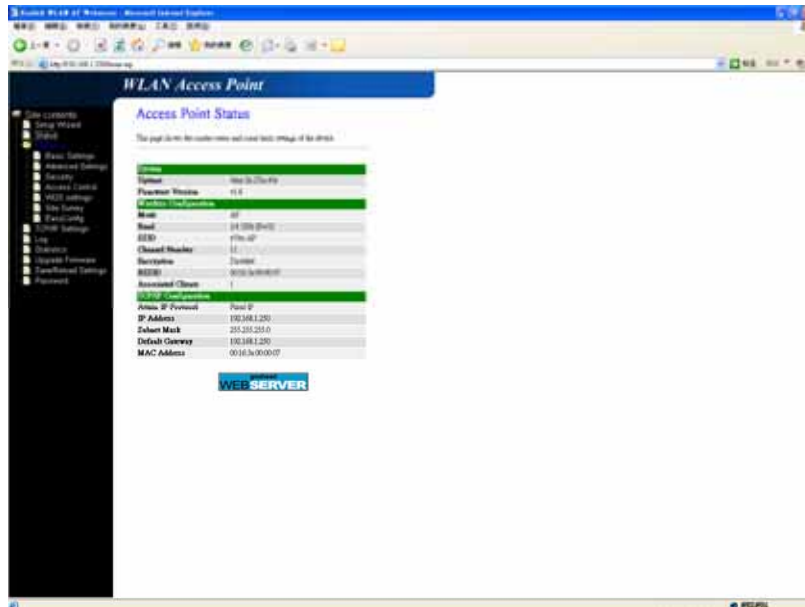
3.2.9 TCP/IP



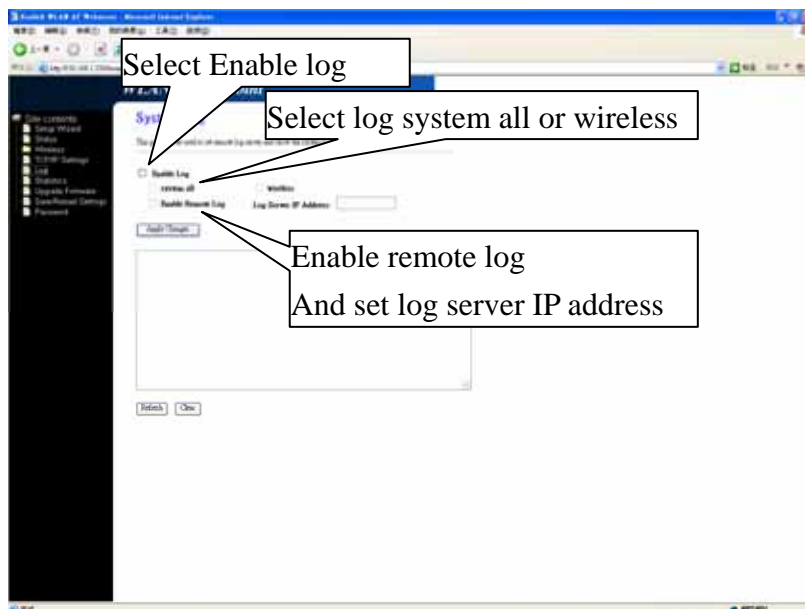
4 System Tools

4.1 Status

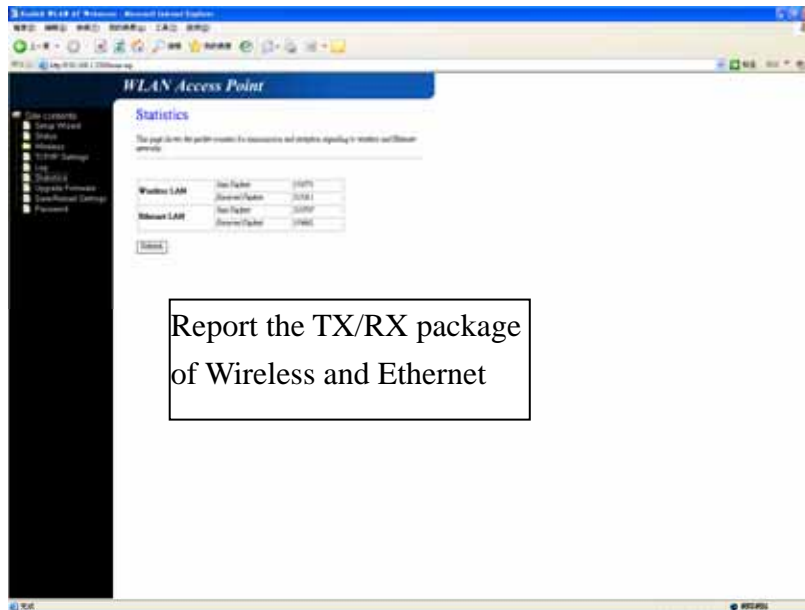
Get system status by reading this page



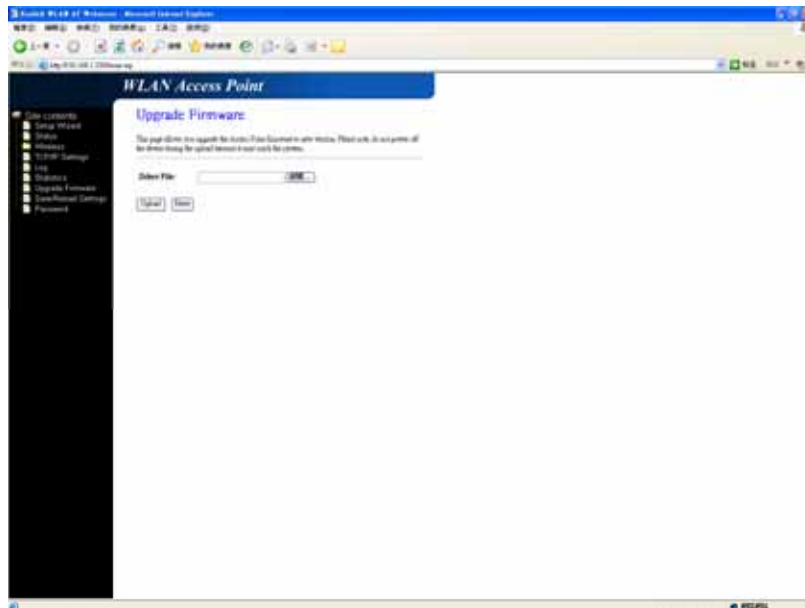
4.2 Log



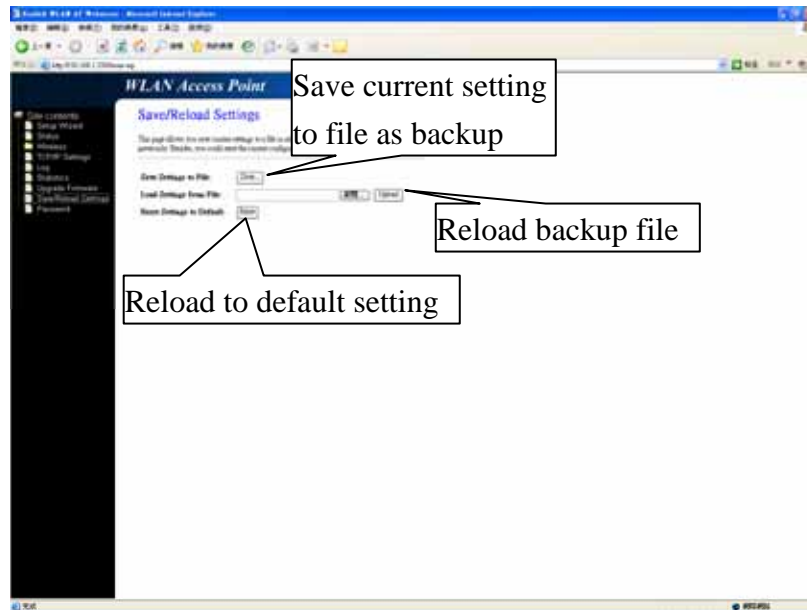
4.3 Statistic



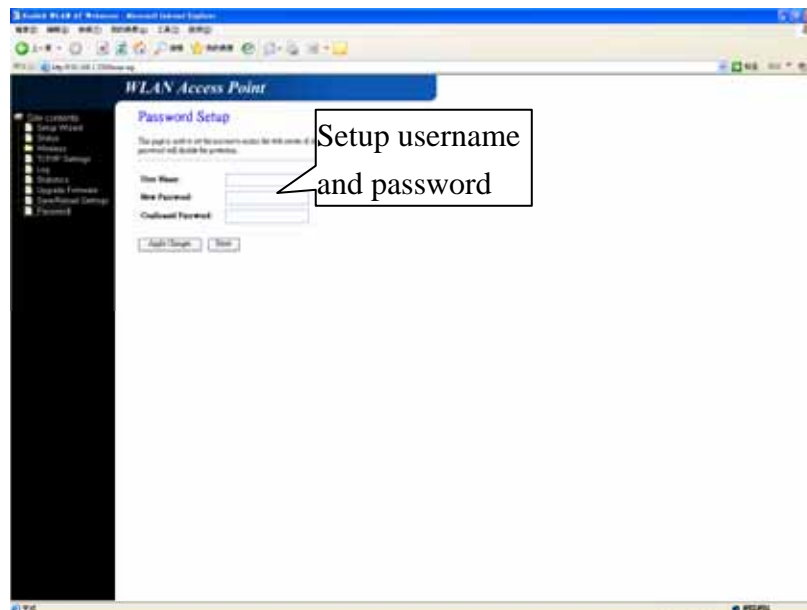
4.4 Upgrade Firmware



4.5 Save/Reload Setting



4.6 Password



5 FCC Warning

Federal Communication Commission Interference Statement

This equipment has been tested and found to comply with the limits for a Class B digital device, pursuant to Part 15 of the FCC Rules. These limits are designed to provide reasonable protection against harmful interference in a residential installation. This equipment generates, uses and can radiate radio frequency energy and, if not installed and used in accordance with the instructions, may cause harmful interference to radio communications. However, there is no guarantee that interference will not occur in a particular installation. If this equipment does cause harmful interference to radio or television reception, which can be determined by turning the equipment off and on, the user is encouraged to try to correct the interference by one of the following measures:

- Reorient or relocate the receiving antenna.
- Increase the separation between the equipment and receiver.
- Connect the equipment into an outlet on a circuit different from that to which the receiver is connected.
- Consult the dealer or an experienced radio/TV technician for help.

This device complies with Part 15 of the FCC Rules. Operation is subject to the following two conditions: (1) This device may not cause harmful interference, and (2) this device must accept any interference received, including interference that may cause undesired operation.

FCC Caution: Any changes or modifications not expressly approved by the party responsible for compliance could void the user's authority to operate this equipment.

IMPORTANT NOTE:

FCC Radiation Exposure Statement:

This equipment complies with FCC radiation exposure limits set forth for an uncontrolled environment. This equipment should be installed and operated with minimum distance 20cm between the radiator & your body.

This transmitter must not be co-located or operating in conjunction with any other antenna or transmitter.