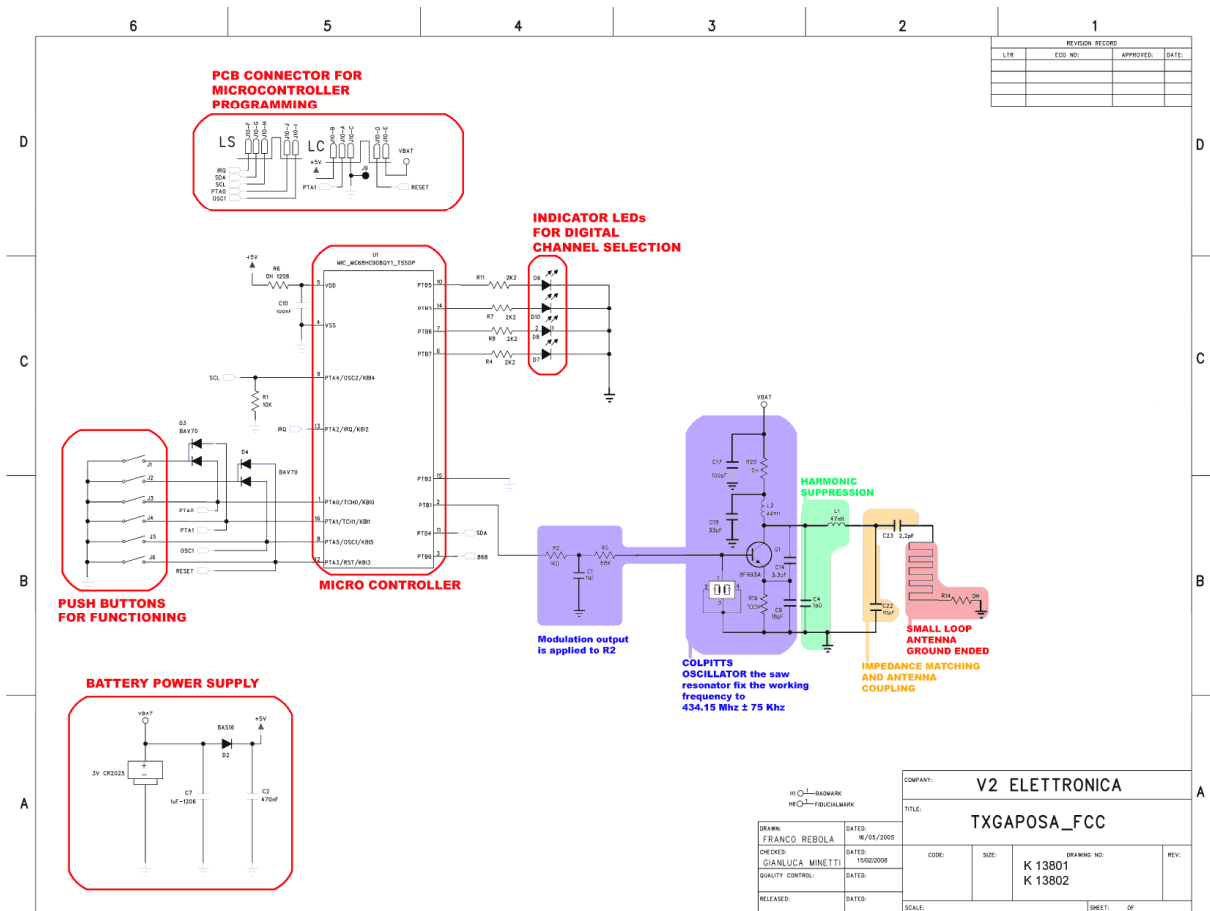


Evaluation of GAPOSA FCC ID: UVLQCTSERIES

1. DESCRIPTION
2. ANALYSIS OF DERIVED PRODUCT
3. INSTALLATION RULES AND POSSIBLE USE LIMITATIONS
4. CONFORMITY TO EUROPEAN STANDARDS

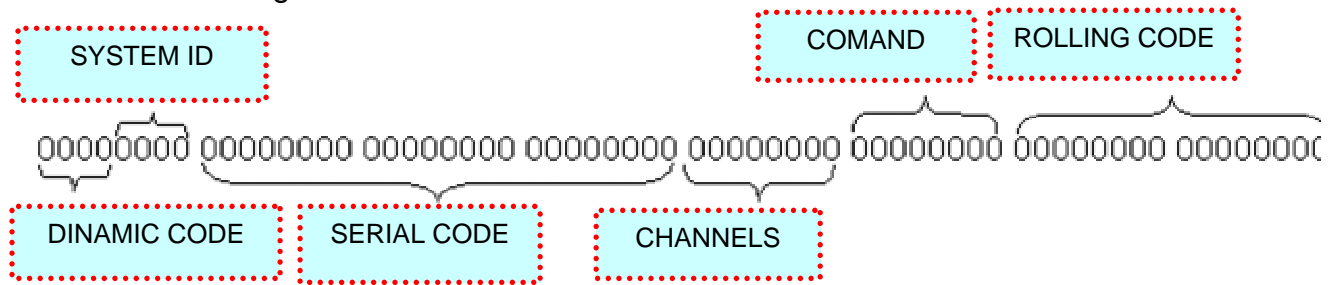
1. DESCRIPTION



Typical uses of these devices are remote controls rolling shutters or rolling curtains. The working frequency of this remote controls is 434.15 Mhz (\pm 75KHz), they are saw based Colpitts oscillator, OOK carrier modulated. A frame of 64 bits contains all the needed information to be recognized by the receiver. The frame architecture is show below. They are power supplied by two lithium batteries in series (size CR2025).

FRAME ARCHITECHTURE

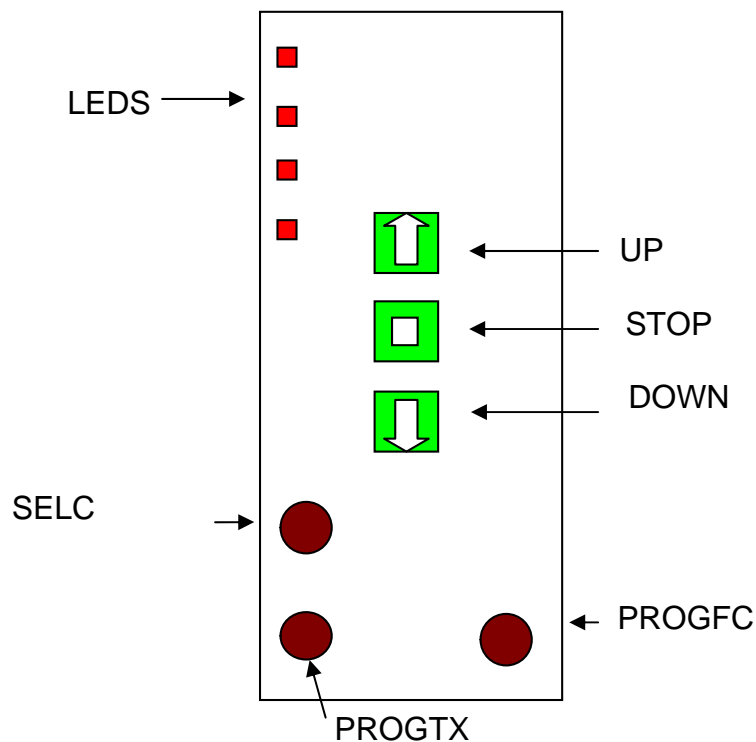
A 64 bit serial string forms the frame.



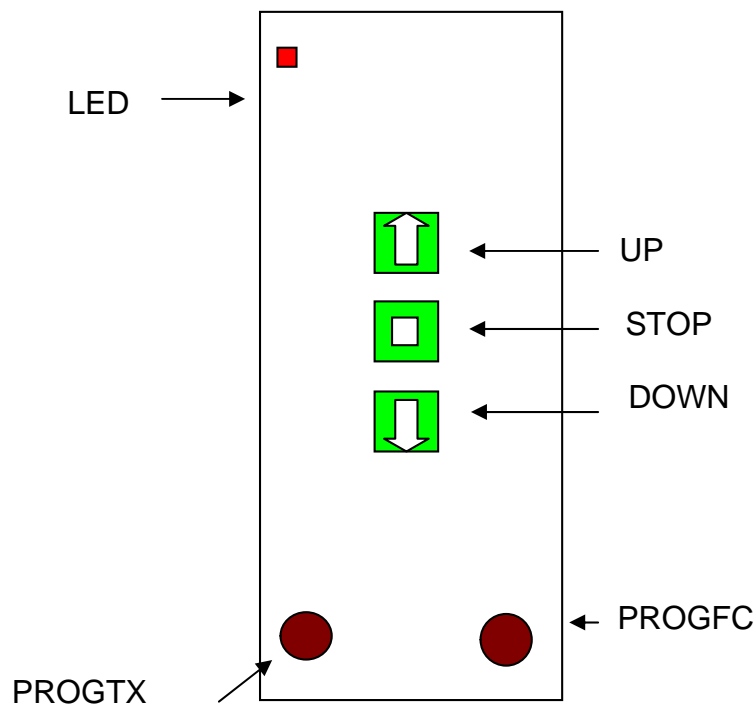
Start bit (1bit)	Frame (64 bits)	Pause
2.6 ms	82.8 ms	15.5 ms

Four Channels version

- UP command key (i.e. for opening the rolling shutter)
- STOP command key (i.e. for stopping the rolling shutter)
- DOWN command key (i.e. for closing the rolling shutter)
- SELC programming key
- PROGFC programming key
- PROGTX programming key
- LED channel identifier (1up to 4 or grouping)



One channel version



2. ANALYSIS OF DERIVED PRODUCT

All versions use the same p.c.b (printed circuit board), the main difference is the number of LEDs and programming keys mounted on the PCB.

Transmitters K 13802 are the same as K 13801 with the exception of the saw resonator size (3.5 x 5 mm for K13801 and 3 x 3 mm for K13802).

3. INSTALLATION RULES AND POSSIBLE USE LIMITATIONS

Duty cycle has to be < of 0.1%

4. CONFORMITY TO EUROPEAN STANDARDS

The equipment complies with European Standard EN 300 220-1 (2006)