

# **CAEN RFID EASY CONTROLLER SOFTWARE**



**Technical Information Manual**

**Revision n. 01**

**14/05/2012**

# Scope of Manual

This manual will help you to get started with the Easy Controller, the new RFID Software User Interface for CAEN RFID Easy2read family. This Software allows you to control and configure all the CAEN RFID readers in a simple and easy way.

## Change Document Record

Date	Revision	Changes
14 May 2012	01	First release.

### CAEN RFID srl

Via Vetraria, 11 55049 Viareggio (LU) - ITALY  
Tel. +39.0584.388.398 Fax +39.0584.388.959  
[info@caenrfid.it](mailto:info@caenrfid.it)  
[www.caenrfid.it](http://www.caenrfid.it)

---

© CAEN RFID srl – 2010

### Disclaimer

No part of this manual may be reproduced in any form or by any means, electronic, mechanical, recording, or otherwise, without the prior written permission of CAEN RFID.

The information contained herein has been carefully checked and is believed to be accurate; however, no responsibility is assumed for inaccuracies. CAEN RFID reserves the right to modify its products specifications without giving any notice; for up to date information please visit [www.caenrfid.it](http://www.caenrfid.it).

### Federal Communications Commission (FCC) Notice <sup>1</sup>

This device was tested and found to comply with the limits set forth in Part 15 of the FCC Rules. Operation is subject to the following conditions: (1) this device may not cause harmful interference, and (2) this device must accept any interference received including interference that may cause undesired operation. These limits are designed to provide reasonable protection against harmful interference when the equipment is operated in a commercial environment.

This device generates, uses, and can radiate radio frequency energy. If not installed and used in accordance with the instruction manual, the product may cause harmful interference to radio communications. Operation of this product in a residential area is likely to cause harmful interference, in which case, the user is required to correct the interference at their own expense. The authority to operate this product is conditioned by the requirements that no modifications be made to the equipment unless the changes or modifications are expressly approved by CAEN RFID.

---

<sup>1</sup> This declaration only applies to FCC readers A828US, A829US, A528, R1230CB, R1260I, R1260U.

# Index

Scope of Manual.....	2
Change Document Record.....	2
<b>Index.....</b>	<b>3</b>
<b>List of Figures.....</b>	<b>3</b>
<b>List of Tables.....</b>	<b>3</b>
<b>1 Getting Started.....</b>	<b>4</b>
Before starting: CAEN RFID reader system overview .....	5
Installation.....	5
Uninstalling CAEN RFID Easy Controller .....	7
<b>2 Using CAEN RFID Easy Controller .....</b>	<b>8</b>
Launching CAEN RFID Easy Controller .....	9
Connect to the Reader .....	9
Main window.....	10
Information about the Easy Controller .....	11
<b>3 Quick Start .....</b>	<b>12</b>
Doing inventory .....	13
Operating with tags .....	13
ProgramID.....	14
Read & Write .....	14
Lock.....	15
Kill .....	16
<b>4 Easy Controller Options.....</b>	<b>17</b>
Options window .....	18
General.....	18
Identification.....	18
Logging options.....	18
Reader configuration.....	20
Logical source configuration.....	21
Source configuration.....	21
Summary.....	22
<b>5 GPIO Management.....</b>	<b>23</b>
GPIO Management Window.....	24

## List of Figures

Fig. 2.1: Connection port configuration.....	9
Fig. 2.2: CAEN RFID Easy Controller Side Bar .....	10

## List of Tables

Tab. 1.1: CAEN RFID Easy Controller Directories .....	7
Tab. 3.1: Lock – Action-field functionality .....	16

# 1 Getting Started

This chapter provides simple steps to quickly start using the **CAEN RFID Easy Controller Software**. It contains these topics:

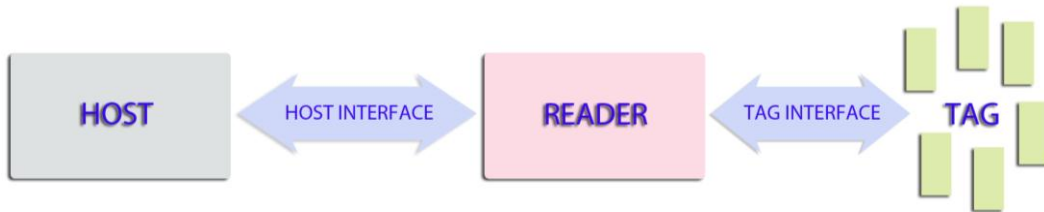
- [Before starting: CAEN RFID reader system overview](#)
- [Installation](#)
- [Uninstalling CAEN RFID Easy Controller](#)



## Before starting: CAEN RFID reader system overview

Before using this software it is useful to get introduced to the basic concepts of CAEN FID readers.

A CAEN RFID reader can be seen, in a simplified model, as a box with one or more communication interfaces to the host side and one or more communication interfaces to the tag side. The reader receives commands coming from the host (a PC or any other controlling device) and it uses the interface to the tag (typically one or more antennas) to perform operations on tag itself and then it replies back to the host.



Antennas belonging to the same reader can be grouped in logical groups called “logical sources” or simply “sources”.

CAEN RFID protocol defines up to 4 logical sources, named from “Source\_0” to “Source\_3”.

A source is composed by the 2 elements specified below:

- *Antennas:*

CAEN RFID readers can have from 1 to 4 antenna ports according to the model. In case of one antenna reader the only available antenna is linked to “Source\_0”. In case of four antennas reader, the default configuration consists of a single antenna connected to a single source. Therefore “Source\_0” identifies the first antenna... “Source\_3” identifies the fourth antenna. Each antenna can be linked to the source in a non-exclusive mode: for example the first antenna can be linked to “Source\_0” and “Source\_3”.

- *A set of standard EPC Class1 Gen2 parameters:*

Q value, Session, Selected, and Target (for more info please refer to the EPC Class 1 Gen 2 specification document at <http://www.gs1.org/gsmp/kc/epcglobal/uhf1g2>).

Remember that all operations on the tags are performed through these logical sources.

## Installation

CAEN RFID Easy Controller installation is provided through an auto-installer file called *Setup.exe*: running this, Easy Controller will install on pc.

Before running, be sure that your pc meets the minimum system requirements:

- 1 gigahertz (GHz) or faster processor
- 1 gigabyte (GB) RAM
- 30 MB available hard disk space for installation (administration rights required)
- Microsoft .NET 2.0 runtime or higher
- Microsoft Windows XP(SP2)/Vista/7 (32 bit)

To install the software:

1. Connect to our [website](#) (you need to log in or to register on our website) and download the latest version of the CAEN RFID Easy Controller Software.
2. Double click on the Setup.exe and follow the instructions.



If you choose *default value* during setup, the files of the EasyController will be placed under *Program files* in a folder named *CAEN RFID Easy Controller*.

This folder contains:

Directory/file name	Description
Base	This directory contains information on all supported readers and on general options.
BaseUtils.dll	This library helps the EasyController to parse and save informations stored in Base folder.
CAENRFIDLibrary.dll	This is the CAEN RFID .NET library used by the Easy Controller to work with reader.  <b>Note:</b> if you want to develop your own .NET application use the appropriate link to our site to download the latest version of the .NET library.
Unins000.dat	This file is used by the uninstaller.
Unins000.exe	This is the uninstaller: if you want to uninstall the Easy Controller please refer to Uninstalling CAEN RFID Easy Controller paragraph, pag.7.
Easy Controller src	This folder contains Visual Studio professional projects of the Easy controller with its source code.

Tab. 1.1: CAEN RFID Easy Controller Directories

## Uninstalling CAEN RFID Easy Controller

To uninstall CAEN RFID Easy Controller:

Click on *Start* → *All Programs* → *CAEN RFID Easy Controller* → *Uninstall CAEN RFID Easy Controller*.

## 2 Using CAEN RFID Easy Controller

This chapter provides information on the use of the **CAEN RFID Easy Controller Software**. It contains these topics:

- [Launching CAEN RFID Easy Controller](#)
- [Connect to the Reader](#)
- [Main window](#)
- [Information about the Easy Controller](#)



## Launching CAEN RFID Easy Controller

To launch CAEN RFID Easy Controller:

Click on *Start* → *All Programs* → *CAEN RFID Easy Controller* → *CAEN RFID Easy Controller*.

Or

Click on *CAEN RFID Easy Controller* desktop icon (only in case *Create desktop icon* option was checked, during installation).

## Connect to the Reader

Connect a CAEN RFID reader to your PC.

Launch the CAEN RFID Easy controller application.

On the main screen click on *File* → *Connect*. A Connection windows will open.

Select the connection type (RS232 or Ethernet according to the reader model) and specify the serial port or network address (according to the selected connection type).

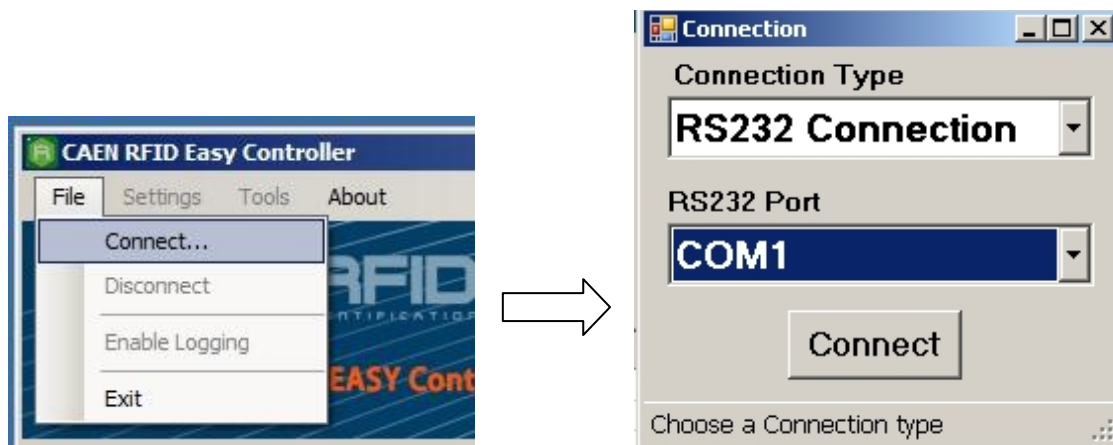


Fig. 2.1: Connection port configuration

In the case of the serial port connection, the textbox above it is replaced by a combobox that lists all active serial ports.

After choosing the type of connection and the address/port, click on the *Connect* button to connect the reader. Any problem arising during the connection will be reported in the status bar located at the bottom of the window.

Once the reader is connected, you can disconnect it by clicking on *File* → *Disconnect*.

**Note:** To make sure the program runs correctly ensure that Easy controller has exclusive access to the reader.

## Main window

To verify if the connection with the reader is established, check the green dot down on the left side of the sidebar (see fig. Fig. 2.2: CAEN RFID Easy Controller Side Bar pag.10).

Once connected to the reader, on the *READER INFORMATION* box you can find information on reader model, serial number and Firmware release.

On the menu bar you can find four options:

- **File:** contains the *Connect*, *Disconnect*, *Enable Logging* and *Exit* choices
- **Settings:** contains the *Source Selection* and *Options* choices
- **Tools:** contains the *I/O management* (GPIO) choice
- **About:** opens the information dialog showing the Easy Controller Version

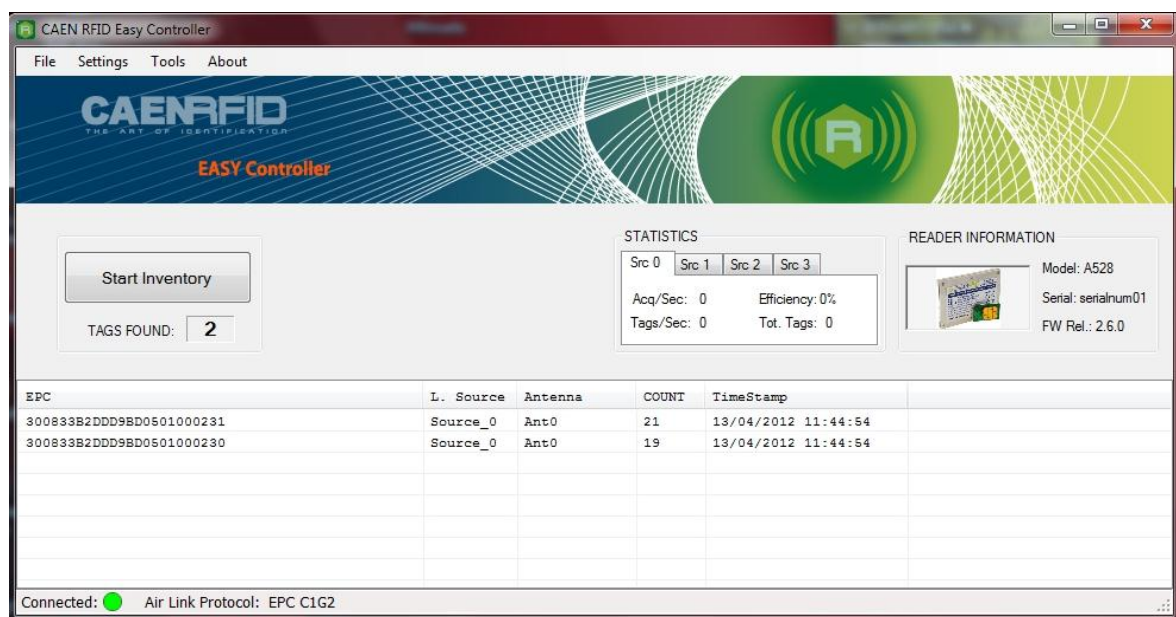


Fig. 2.2: CAEN RFID Easy Controller Side Bar

The *Start Inventory* button starts and stops the inventory process and shows the informations retrieved from the tags in the main window. In the *TAGS FOUND* text box the number of detected tags is shown.

After the inventory has started, on the lower half of the main window you can find a table containing the following parameters:

- **EPC:** EPC code of the inventoried tag. (tag ID)
- **L. Source:** source of identification.
- **Antenna:** Antenna of the source that has identified the tag.
- **TID:** TID of tag, if available (default is TID reading off).
- **RSSI:** Received Signal Strength Indicator (as 16 bit signed form).
- **COUNT:** number of time the tag has been read
- **TimeStamp:** timestamp associated with the time of first identification of tag

All the above listed parameters can be displayed or not in the table.

Using the context menu you can select the ones you want to be displayed in the table (right click with the mouse on the table and check/uncheck them).

Finally at the bottom of the main window you can find a status bar displaying the connection status (green dot = connected, red dot = not connected) and the anti-collision algorithm (air protocol) in use.

During the inventory cycle you can check the following parameters inside the *Statistic* box:

- **Acquisitions per second (Acq/sec):** the number of acquisition cycles per second.
- **Tags per second (tags/sec):** the number of tags detected per second
- **Efficiency (Efficiency):** is the value calculated by a Simple Moving Average algorithm using *Acq/sec* and *tags/sec* parameters.
- **Tot tags (Tags found):** maximum number of tags detected for each inventory cycle.

## Information about the Easy Controller

Information on the CAEN RFID Easy Controller are available clicking on *About*.

This window shows the current revision of the .NET library used by EasyController.

## 3 Quick Start

This chapter explains how to control your reader using the **CAEN RFID Easy Controller Software**. It contains these topics:

- [Doing inventory](#)
- [Operating with tags](#)



## Doing inventory

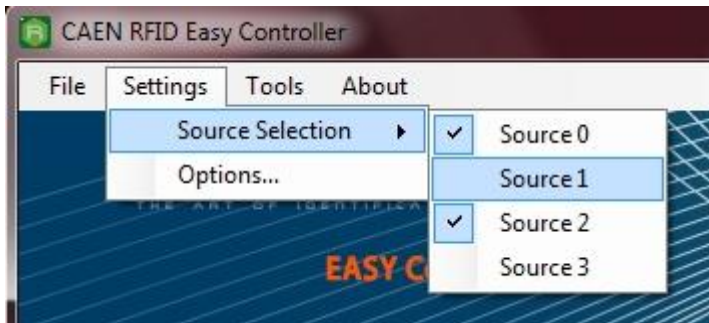
Once ensured that the reader is connected to the host (check the connection status on the status bar), the CAEN RFID Easy Controller allows you to control your reader.

To start an inventory, click on *Start inventory* button.

By default the reader identifies tags using Source 0 (for further information on sources see *Before starting: CAEN RFID reader system overview pag.5*).

If you want to add sources click on *Settings* → *Source selection* and check the desired sources.

Remember that if the reader has one antenna, only Source 0 is available.



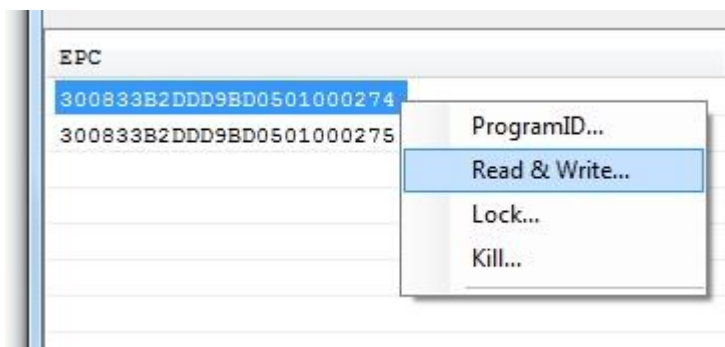
To stop the inventory click on *Stop Inventory*. If *Enable Logging* has been previously selected, then the inventory results are automatically logged. For logging options, see *Logging options* section.

Once click on the *Start Inventory* button, the statistics are tabbed for source and updated values are shown only after about 30 total acquisitions.

*Note:* the efficiency and the acquisition speed depend on several factors (antenna type, testing environment and parameters settings) and do not represent a reliable index for an exhaustive evaluation of the reader performance.

## Operating with tags

After the inventory has been stopped, you can make some operations on tags that have been identified. Right click on the desired tag and the following context menu will appear:



The available operations on tags are:

- ProgramID
- Read and Write
- Lock
- Kill

## ProgramID

ProgramID allows you to modify the EPC code of the selected tag. Usually EPC codes are 12 bytes length (96 bit).

In case the EPC bank has been previously locked you will need to input an access password.

The figure below shows the ProgramID window:

- **ID length** is the number of bytes of the new ID to program: 12 bytes is the standard length
- **ID** is an hexadecimal string that represents the new ID
- **Password** is a hexadecimal string that represents access password; it must be exactly 4 byte long.



*Note:* EPC Class1 Gen2 defines two types of password: “kill password” and “access password” and both are 4 byte long. If a tag is locked, “access password” is used for all the operations but killing: kill operation must be performed using the “kill password”. The two passwords are stored in a reserved bank of tag.

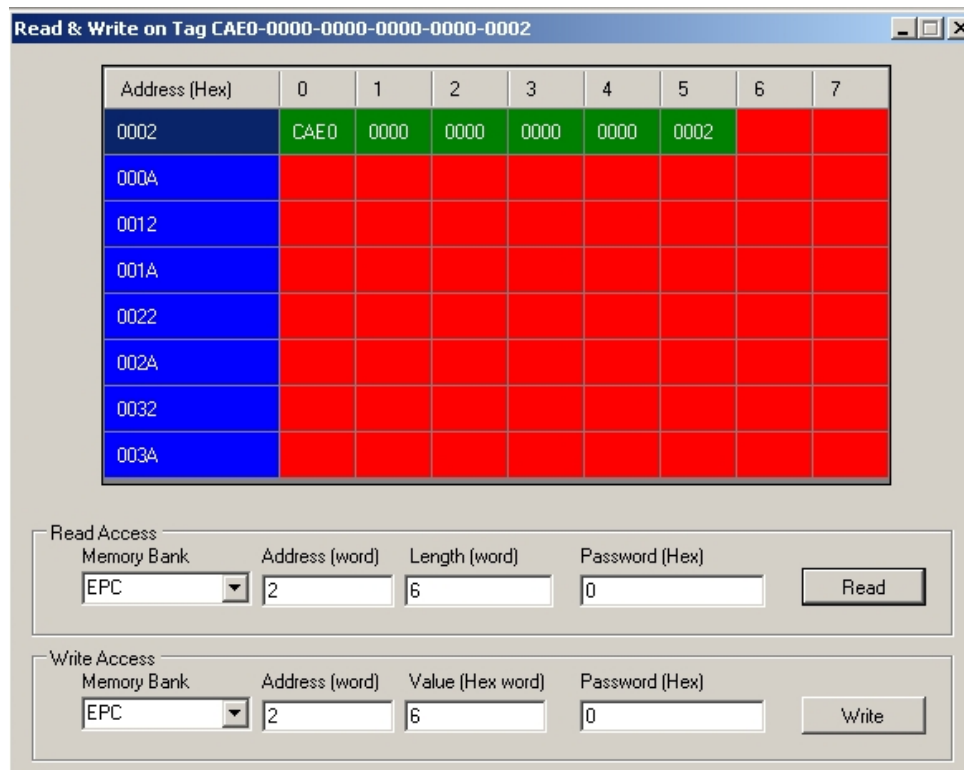
For tags memory map specification, please refer to <http://www.gs1.org/gsmp/kc/epcglobal/uhfc1g2>

## Read & Write

You can quickly read and write information inside the tag using the *Read&Write* command.

The *Read&Write* window shows a part of the tag's memory in a 8x8 word (2 bytes) mapped area.

An example of the mapped area:



Address (Hex)	0	1	2	3	4	5	6	7
0002	CAE0	0000	0000	0000	0000	0002		
000A								
0012								
001A								
0022								
002A								
0032								
003A								

**Read Access**

Memory Bank: EPC Address (word): 2 Length (word): 6 Password (Hex): 0 Read

**Write Access**

Memory Bank: EPC Address (word): 2 Value (Hex word): 6 Password (Hex): 0 Write

Commands are grouped in “Read Access” and “Write Access” areas:

**Read Access group contains:**


- **Memory Bank:** a combobox permits to choose the memory bank (RESERVED, EPC, TID, USER) where to perform the read operation
- **Address (word):** here you can specify the start address (word-oriented integer number) for the read operation
- **Length (word):** here you can specify the number of words (an integer number) you want to read starting from *Address*
- **Password (Hex):** here you can put the access password (hexadecimal characters)
- **Read button:** it performs the read operation. An error message will appear if some parameter is wrong or the selected tag is no more under the antenna field

**Write Access group contains:**

- **Memory Bank:** a combobox permits to choose the memory bank (RESERVED, EPC, TID, USER) where to perform the write operation
- **Address (word):** here you can specify the start address (word-oriented integer number) for the write operation
- **Value (Hex):** here you can put the value (a word) you want to write
- **Password (Hex):** here you can put the access password (hexadecimal characters)
- **Write button:** it performs the write operation. An error message will appear if some parameter is wrong or the selected tag is no more under the antenna field

## Lock

The memory banks of the tag can be written protected by using the *Lock* command.



The *Lock* window contains the following parameters:

- **Memory Bank:** a combobox permits to choose the memory bank or field (kill password field, access password field, EPC bank, TID bank, USER bank) where to perform the lock operation.
- **Action:** it contains a list of four lock modes available:
  - **ACCESSIBLE:** the bank is accessible, no need to provide password to operates on this bank
  - **PERMANENT ACCESSIBLE:** bank is permanent accessible, and it cannot be locked anymore
  - **ACCESSIBLE ON SECURE:** bank is accessible only if the password is provided
  - **PERMANENT UNACCESSIBLE:** bank is permanently locked, and cannot be made accessible anymore
- **Password (Hex):** here you can put the access password (hexadecimal characters)

**Lock button:** it performs the lock operation. An error message will appear if some parameter is wrong or the selected tag is no more under the antenna field.

*Note:* the lock command prevents the lock and write operations on EPC, TID and USER memory bank while it prevents read, write and lock operations on the kill password and the access password memory fields contained in the RESERVED memory bank as specified by the following table Tab. 3.1: Lock – Action-field functionality pag.16.

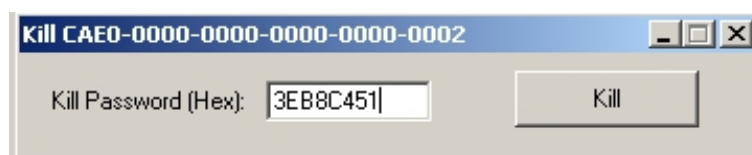
pwd-write	permalock	Description
0	0	Associated memory bank is writeable from either the <b>open</b> or <b>secured</b> states.
0	1	Associated memeory bank is permanently writeable from either the <b>open</b> or <b>secured</b> states and may never be locked.
1	0	Associated memeory bank is writeable from the <b>secured</b> state but not from the <b>open</b> state.
1	1	Associated memory bank is not writeable from any state.
pwd-read/write	permalock	Description
0	0	Associated password location is readable and writeable from either the <b>open</b> or <b>secured</b> states.
0	1	Associated password location is permanently readable and writeable from either the <b>open</b> or <b>secured</b> states and may never be locked.
1	0	Associated password location is readable and writeable from the <b>secured</b> state but not from the <b>open</b> state.
1	1	Associated password location is not readable or writeable from any state.

Tab. 3.1: Lock – Action-field functionality

## Kill

You can kill a tag using the *Kill* command.

Once selected *Kill* on the contextual menu the following *Kill window* will appear:



This window provides a password textbox and a *Kill* button; type the password (4 bytes in hexadecimal format i.e. A013B4F9) in the textbox and press *Kill*.

A dialog window will appear asking for a last confirmation.

**Warning:** Be aware when a tag is killed it won't work anymore!

## 4 Easy Controller Options

This chapter gives information on the **CAEN RFID Easy Controller** Options. It contains these topics:

- [Options window](#)
- [General](#)
- [Reader configuration](#)
- [Logical source configuration](#)



## Options window

On the main menu, clicking on *Settings* → *Options*, will open the Options window.

This window has a tree-view on the left side with content in the right side.

There are three main sections:

- General
- Reader Configuration
- Logical Source Configuration

These sections will be explained below.

## General

The *General* section deals with identification and logging options.

### Identification

*Identification* box contains inventory mode and listview options:

- *Inventory Mode*. There are three inventory modes: Single, Continuous and Buffered
  - *Single* mode performs a single inventory cycle each time the *Start Inventory* button is clicked
  - *Continuous* mode performs continuous inventory cycles until *Stop Inventory* button has been clicked
  - *Buffered* mode takes the tags from internal buffer if available (when supported by the reader)

*Note*: when the *Buffered* mode is activated the *Start Inventory* button change to *Download Buffer*. If the reader you have connected doesn't have an internal buffer, this mode is disabled. Please refer to your reader documentation.

- *ListView Options*. In this area you can operate on the following parameters:
  - *Converts EPC to ASCII*: converts bytes of EPC in ASCII characters.
  - *Either in log?*: the EPCs in the log file will show as ASCII characters too.
  - *Byte Field View*: this groupbox is used to choose the byte field view (useful in case of long codes). The hexadecimal data can be grouping in:

*Byte*: single byte

*Word*: 2 bytes

*Dword*: 4 bytes

*Font*: opens a dialog to choose the listview font.

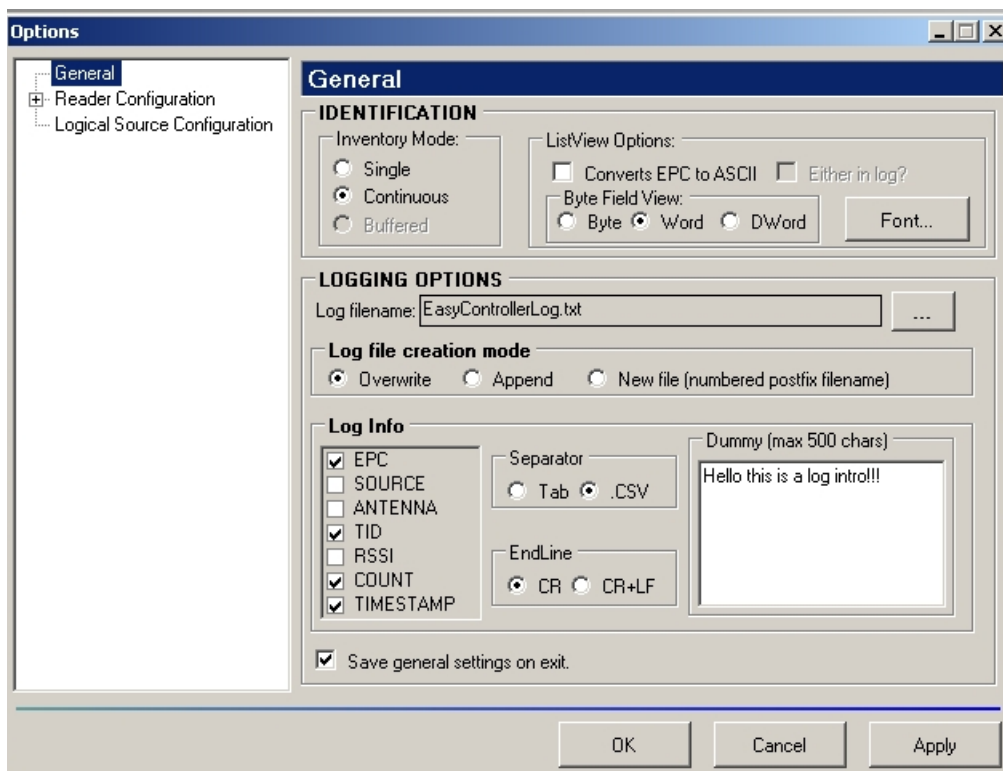
### Logging options

*Logging Options* provides a set of preferences for the logging session:

- *Log filename*: it is the file where all the logging informations will be stored: clicking on the button “...” will open a dialog where you can choose directory and filename.
- *Log file creation mode*: here you can select between three options:
  - *Overwrite*: at the end of the inventory session, a log file is created overwriting the existing one.
  - *Append*: at the end of the inventory session, new logged data are appended at the end of the existing file.

- *New file*: at the end of the inventory session, new logged data will be stored in a new file. The name of the file will be created with an progressive number at the end (i.e. if the name for the log file is DumpTest.txt and it is stored in C drive, the first log file, with absolute path, will be 'C:\DumpTest00.txt').
- *Log Info*: here you can select the parameters you want to store on the log file:
  - In the first box you can select EPC, SOURCE, ANTENNA, TID, RSSI, COUNT and TIMESTAMP.
  - In the *Separator* box you can choose the separation mode: Tab (Tab separated values) or CSV (comma separated values) useful for most spreadsheet applications.
  - In the *EndLine* box you can choose the endline separator: CR or CR+LF.
  - *Dummy*. Here you can add some extra text information in the file (i.e. a description of a reader test).

If *Save on Exit* is checked all general settings will be saved on exit and they will be maintained for the next connection.



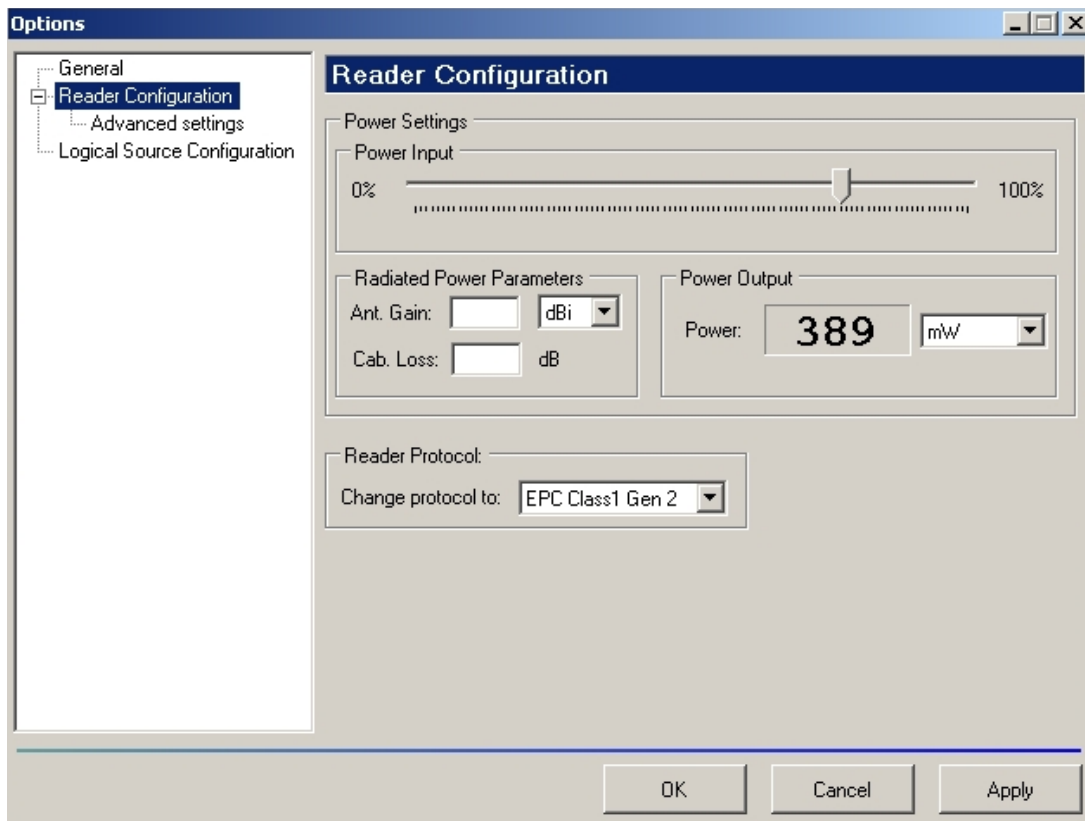
## Reader configuration

CAEN RFID Readers have some basic configuration parameters. By clicking on *Reader Configuration* you can access to the Power settings and Reader Protocol area.

- **Power Input.** You can increase or decrease the output power of the reader moving the slider from 0% to 100%. Not all values can be accepted by the reader, therefore the reader approximates the chosen value to the nearest valid one when releasing the mouse button from the slider.
- **Power output** allows you to select the measurement unit (useful in case you want information on Conducted Power (mW dBm) or Radiated Power (mWerp mWeirp dBmerp dBmeirp).
- **Radiated Power Parameters.** In this box you can set two parameters that allow to convert the Conducted Power into Radiated Power (\*erp and \*eirp units): *Antenna Gain* (expressed for linear – dBi - or circular antenna type – dBic) and *Cable Loss*.
- **Change protocol to** allows you to change the communication protocol.

*Note:* in case of fixed power reader, the slider in the “Power Input” box is disabled.

*Note:* if your reader has an integrated antenna, the *Radiated Power Parameters* are disabled and the values are automatically set with the integrated antenna values.



## Logical source configuration

Logical sources concepts are described in paragraph *Before starting: CAEN RFID reader system overview* pag. 5

This section is divided into two parts:

- *Source Configuration*
- *Summary*

### Source configuration

To configure a logical source follow the steps below:

- Select a source from the *Source Selection* combobox.
- Check/uncheck the antenna to add/remove it from the selected source.

The status of the antenna is indicated by colour:

- Red: bad-connected or broken antenna
- Yellow: poor signal from antenna
- Green: well-connected antenna

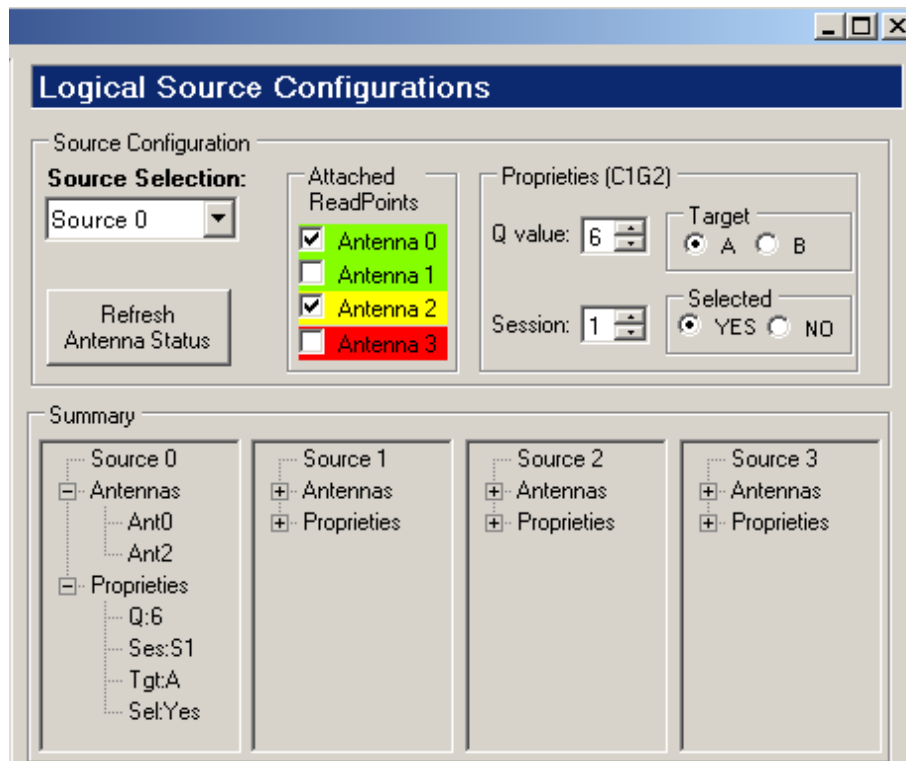
Press “Refresh Antenna Status” button in case you need to check the antenna status.

On the *Properties (C1G2)* area you can select some EPC parameters (Q value, Session, Selected and Target).

For further details on these parameters, please refer to <http://www.gs1.org/gsm/kc/epcglobal/uhf1g2>.

Click *OK* or *Apply* to change settings.

*Note:* Q parameter is useful for the optimization of the inventory efficiency: as a rule of thumb, if you have to read a huge population of tags you need to select a high value for the Q parameter (7 or higher), otherwise you can select a lower value.



**Logical Source Configurations**

**Source Configuration**

**Source Selection:** Source 0

Refresh Antenna Status

**Attached ReadPoints**

- ☒ Antenna 0
- ☐ Antenna 1
- ☒ Antenna 2
- ☐ Antenna 3

**Properties (C1G2)**

Q value: 6

Session: 1

Target: ☒ A ☐ B

Selected: ☒ YES ☐ NO

**Summary**

Source 0	Source 1	Source 2	Source 3
Antennas	Antennas	Antennas	Antennas
Ant0			
Ant2			
Properties	Properties	Properties	Properties
Q:6			
Ses:S1			
Tgt:A			
Sel:Yes			

*Note:* if your reader has one antennna connector, only Ant0 (first Antenna) and Source 0 are available.

## **Summary**

Here you can find the summary of all current sources settings.

## 5 GPIO Management

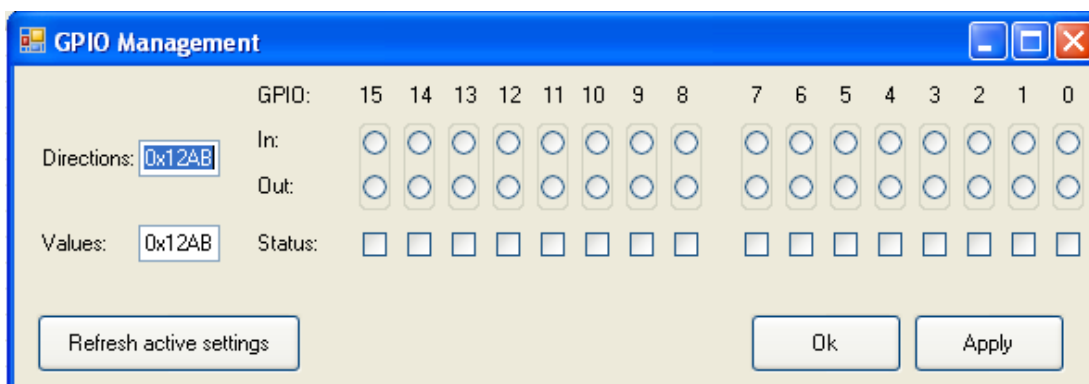
This chapter gives information on the **CAEN RFID Easy Controller** GPIO Management. It contains these topics:

- [GPIO Management Window](#)



## GPIO Management Window

Clicking on *Tools* → *I/O Management*, the GPIO settings window will appear:



This window allows you to configure up to 16 GPIO (the number of enabled GPIO depends on the reader model). Direction and value are represented respectively by radiobutton and checkbox (if supported by the reader).

If the direction is set on output value, you can use the checkbox to set the output line value, if the direction is set on input value, the checkbox is disabled and its status reflects the input line value.

You can also find the hexadecimal word values of current settings, useful for programmers.

The *Refresh active settings* button reads and shows the current values, deleting all the non-applied changes made.