

Voiture télécommandée / RC car / Coche RC

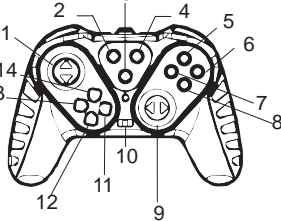
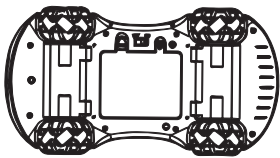
CROSSLANDER® PHANTOM RC



RC car

Remote

Watch remote control



Instruction manual
Manual de instrucciones
Mode d'emploi

LEXIBOOK®
RC65

ENGLISH

SAFETY INSTRUCTIONS

PLEASE READ BEFORE OPERATING THIS EQUIPMENT.

- Before using the unit, be sure to read all operating instructions carefully. Please note that these are general precautions and may not pertain to your unit
1. Read this Instruction Manual before you attempt to connect or operate the appliance.
 2. Keep these instructions in good condition. Heed all warnings. Follow all instructions.
 3. Save this Instruction Manual for future reference.
 4. The apparatus shall not be exposed to dripping or splashing and no objects filled with liquids, such as vases, shall be placed on the product. Dry location use only.
 5. No naked flame source, such as candles, should be placed on the product.
 6. Ventilation should not be impeded by covering the ventilation openings.
 7. Only use accessories, which are specified by the manufacturer.
 8. Use replacement parts, which are specified by the manufacturer.
 9. Install the unit in accordance with the manufacturer's instructions.
 10. Place the unit where there is good ventilation. Place the system on a flat, hard and stable surface. Do not expose to temperatures above 40°C. Allow at least 10 cm clearance from the rear and the top of the unit and 5 cm from each side.
 11. Press the players buttons gently. Pressing them too hard can damage the player.
 12. Dispose of used batteries in an environmental-responsible manner.
 13. Always ensure that the product is unplugged from the electrical outlet before moving or cleaning. Clean it with dry cloth only.
 14. Turn off the product during lightning, storms or when it will not be used for long periods of time.
 15. This product has no user-serviceable parts. Do not attempt to repair this product yourself. Only qualified service personnel should perform servicing. Take the product to the electronics repair shop of your choice for inspection and repair.
 16. NEVER let anyone, especially children, push anything into holes, slots or any other openings in the unit's casing as this could result in a fatal electric shock.
 17. Don't mount this product on a wall or ceiling.
 18. Do not leave the unit unattended when it is in use.
 19. Keep minimum distances around the apparatus for sufficient ventilation.
 20. The ventilation should not be impeded by covering the ventilation openings with items, such as newspapers, table-cloths, curtains, etc.
 21. The use of apparatus in moderate climates.
 22. Batteries should be disposed of properly. Take them to the collection container in order to protect the environment.

CONTENTS

When unpacking, ensure that the following elements are included:
1 x Crosslander® Phantom 1 x remote 1 x pipette 1 x watch remote control
1 x charging station 2 x rechargeable batteries 1 x instruction manual

WARNING: All packaging materials, such as tape, plastic sheets, wire ties and tags are not part of this toy and should be discarded for your child's safety.

POWER SUPPLY

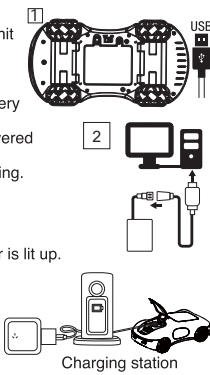
Your RC car operates with the 3.7V --- 1200mAh rechargeable battery, which can be charged with the USB-C charging cable (included).
The remote operates with 2 x 1.5V --- AA/LR6 batteries (not included).
The watch remote operates with 2 x 1.5V --- AAA/LR03 (not included).

2 options for charging the car:

1. Check that the unit is switched off.
2. Using a screwdriver, open the battery door located at the rear of the unit (see figure 1).
3. Delicately remove the rechargeable battery from the compartment. Unplug it by pinching both sides of the connector.
4. Insert the small end of the USB charging cable (included) into the battery connector.
5. Connect the other end of the USB cable into the USB port of your powered computer.
6. The LED indicator on the USB port lights up when the battery is charging.
7. Once loading is complete the LED light will turn off.

2. 1. Open the trunk (press the switch to open, press to close)
2. Open the black silicone plug and plug in the cable to charge
3. When charging, the indicator light will blink, at full charge, the indicator is lit up.

Note: The RC car must be turned off when charging.



USB cable specifications:

5.0 V --- 1.0A

The toy is only to be connected to equipment bearing the following symbol.

Note: If connect with an adaptor, please only use the adaptor for toys and it should be with this symbol

Note: Please note that the USB cable can be used for battery charging only and not for data transfer.

Warning: Disconnect the adapter if the game is not used for a long period of time to prevent overheating. When the game is powered by an adapter, do not play outside. Check the state of the adapter and the connection cords regularly. If their condition is deteriorating, do not use the adapter until it has been repaired. The toy shall only be used with a transformer for toys. The adapter is not a toy. The device should be disconnected from the power supply to be cleaned if liquids are used for cleaning. The toy is not intended for children under 3 years old. Misuse of transformer can cause electrical shock. **Parental advisory:** transformer and adaptor for toys are not intended to be used as a toy. The usage must be under parental advice.

WARNING: For the purposes of recharging the battery, only use the detachable supply unit provided with this toy.

The toy is not to be connected to more than the recommended number of transformers or power supplies.

Installing batteries in the remote:

1. Using a screwdriver, open the battery door located at the rear of the unit.
2. Insert 2 x 1.5V --- AA/LR6 batteries observing the polarity markings inside the battery compartment.
3. Close the battery compartment and tighten the screw.

Installing batteries in the watch remote:

1. Using a screwdriver, open the battery door located at the rear of the unit.
2. Insert 2 x 1.5V AAA/LR03 batteries observing the polarity markings inside the battery compartment.
3. Close the battery compartment and tighten the screw.

WARNING:

- Danger of explosion if battery is incorrectly replaced. Please only replace it with the same or equivalent battery.
- The battery should not be exposed to high temperatures, such as sunlight, fire or anything similar.
- The normal function of the product may be disturbed by strong electromagnetic interference. If so, simply reset the product to resume normal operation by following the instruction manual. In case the function could not resume, please use the product in other location.

WARNING: Mal-function or loss of memory may be caused by strong frequency interference or electrostatic discharge. Should any abnormal function occur, switch it off and then on again, or unplug the USB cable, or remove the batteries and insert them again.

Non-rechargeable batteries are not to be recharged. Rechargeable batteries are to be removed from the toy before being charged. Rechargeable batteries are only to be charged under adult supervision. Different types of batteries or new and used batteries are not to be mixed. Only batteries of the same or equivalent type as recommended are to be used. Batteries are to be inserted with the correct polarity. Exhausted batteries are to be removed from the toy. The supply terminals are not to be short circuited. Do not throw batteries into a fire. Remove the batteries if you are not going to use the game for a long period of time. Battery shall not be exposed to excessive heat such as sunshine, fire or the like.

PRODUCT DESCRIPTION

- | | | |
|----------------------------|-------------------------------|--------------------------------------|
| 1. Forward/backward | 7. Body lighting | 13. Upper left corner drift |
| 2. Left drift | 8. Tire light | 14. Upper right corner drift |
| 3. Automatic demonstration | 9. Turn left/right | 15. Switch mode watch remote control |
| 4. Right drift | 10. OFF/ON | 16. ON/OFF watch remote control |
| 5. Spray | 11. Bottom right corner drift | 17. Volume control watch remote |
| 6. Volume control | 12. Lower left corner drift | |

GETTING STARTED

When you first use the product, recharge the car, following the steps indicated in the "Power supply" section. Make sure the car is charged and the batteries are installed in the remote control, then switch it on by the ON/OFF button on the underside of the car and on the remote [10].

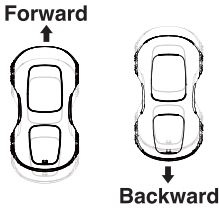
How to use the remote the car with the remote:

Install the batteries in the remote, as indicated in the "Power supply" section.

Direction guiding [1][9][11][12][13][14]

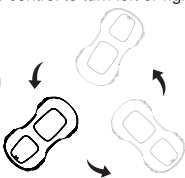
To control the direction of the car:

- Press the button 1 to move forward or backward.

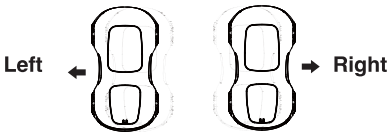


- Press the joystick [9] on the remote control to turn left or right to control 360 degree rotation of the remote control car

360 degree rotation



- Press the buttons [2] and [4], to move to the left or right thanks to its sideways wheels.



Demonstration mode [3]: Press the button [3] to operate the remote control automatic demonstration function button, control the remote control car in different directions automatic demonstration. Press any other buttons to make it stop

Volume (button [6]): Press the button [6] to turn the sound effects on and off.

Fog steam (button [5]):

- Open up the rubber plug located at the rear of the car (please see image A)

- With the help of the pipette, insert water into the container
- Close up the rubber plug.
- Press the button [5] to activate the fog stream. Press again to make it stop.
- Light (buttons [7] and [8]) : Press buttons [7] and [8] to switch on the front and rear lights.

How to use the watch remote control

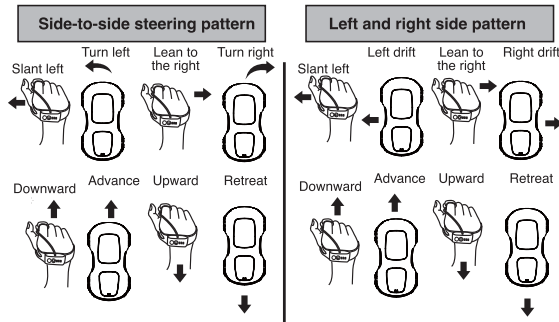
1. Put the thumb inside the bracelet hole.
2. Buckle the bracelet

Button [15]: Press the light control once

Long press mode switch (Turning left and right, driving left and right, switching between two modes)

Button [16]: On/Off button/ Pause button (Press to turn on the device. Long press to shut down)

Button [17]: Press the volume control once. Long press spray



Note: When switching from the wrist remote to the traditional remote, please note that the connection may require a car reboot. If the remote blinks to indicate a loss of connection, turn off and restart the car to re-establish connection with the remote.

FCC NOTICE

This device complies with Part 15 of the FCC Rules. Operation is subject to the following two conditions:

- (1) This device may not cause harmful interference, and
- (2) This device must accept any interference received, including interference that may cause undesired operation.

WARNING: Changes or modifications to this unit not expressly approved by the party responsible for compliance could void the user's authority to operate the equipment.

NOTE: This equipment has been tested and found to comply with the limits for a Class B digital device, pursuant to Part 15 of the FCC Rules. These limits are designed to provide reasonable protection against harmful interference in a residential installation. This equipment generates, uses and can radiate radio frequency energy and, if not installed and used in accordance with the instructions, may cause harmful interference to radio communications.

- However, there is no guarantee that interference will not occur in a particular installation. If this equipment does cause harmful interference to radio or television reception, which can be determined by turning the equipment off and on, the user is encouraged to try to correct the interference by one or more of the following measures:
- Reorient or relocate the receiving antenna.
 - Increase the separation between the equipment and receiver.
 - Connect the equipment into an outlet on a circuit different from that to which the receiver is connected.
 - Consult the dealer or an experienced radio/TV technician for help.

MAINTENANCE AND WARRANTY

Only use a soft, slightly damp cloth to clean the unit. Do not use detergent. Do not to expose the unit to direct sunlight or any other heat source. Do not immerse the unit in water. Do not dismantle or drop the unit. Do not try to twist or bend the unit.

Note: Please keep this instruction manual, it contains important information.

This product is covered by our 3 months warranty.

For any claim under the warranty or after sale service, please contact your distributor and present a valid proof of purchase. Our warranty covers any manufacturing material and workmanship defect, with the exception of any deterioration arising from the non-observance of the instruction manual or from any careless action implemented on this item (such as dismantling, exposition to heat and humidity, etc.). It is recommended to keep the packaging for any further reference. In a bid to keep improving our services, we could implement modification on the colours and the details of the product shown on the packaging.

WARNING! Not suitable for children under 3 years. Choking Hazard - Small parts.

Reference: RC65

Designed and developed in Europe – Made in China, Shantou.

© Lexibook®

For after-sales service, please contact us at
savcomfr@lexibook.com
www.lexibook.com

Lexibook S.A.
6 avenue des Andes, Bâtiment 11
91940 Les Ulis, France

Lexibook America Inc.,
C/O Pramex International
1251 Avenue of the Americas,
3rd Fl, New York,
NY 10020, USA

Lexibook Limited
Unit 8-9, 4th Floor
Kenning Industrial Building
19 Wang Hoi Road
Kowloon Bay, Kowloon
Hong Kong

Environmental Protection:
Unwanted electrical appliances can be recycled and should not be discarded along with regular household waste! Please actively support the conservation of resources and help protect the environment by returning this appliance to a collection centre (if available).

SPECIFICATIONS

Frequency range: 2405MHz-2475MHz -4.830dBm (watch remote controll) -2.491dBm (remote)