

Don't aim your vehicle at people, animals or fragile objects.

5 QUICK TIPS

When your vehicle starts to lose power, it may lose functions or performance. It's time for a recharge. Your vehicle's running time may change depending on your driving style.

Radio interference can make your vehicle run badly. Interference can be caused by other R/C vehicles running on the same frequency, electrical wires, large buildings or cell towers. Try to stay away from these.

Point your transmitter antenna up, not down to ward your vehicle. If your vehicle gets too far away, it won't work properly.

Don't drive your vehicle in sand or through water or snow. If your vehicle does get wet, wipe with a towel and allow to dry completely.

Don't store your vehicle near heat or in direct sunlight. Always turn switches OFF and remove all batteries for storage.



Push the switch OFF and pull cover of the battery power supply

Open the battery cover and remove the batteries

6 POWER SYSTEM

FOR DETAILED INFORMATION REGARDING VEHICLE BATTERY CHARGING AND SAFETY, PLEASE FOLLOW THE SPECIFIC INSTRUCTIONS THAT CAME WITH YOUR BATTERY PACK AND CHARGER.

7 BATTERY INSTALLATION

1 Vehicle

1. First insert the plug of cable into the charger barrel, and then charge up the cable fully, charging it for six hours (as illustrated).



Input plug

2. Rotate the battery cover latch to unlocked position and open the battery cover.

3. Insert the battery pack into the battery compartment and slide it into place as shown.



4. Close the battery cover and rotate the battery cover latch to locked position.

2 Transmitter

1. Slide battery cover open

2. Insert one 6LR61(9V) battery with polarity (+/-) as shown inside battery compartment.

3. Replace battery cover.

BATTERY SAFETY INFORMATION

- Batteries may leak fluids that can cause a chemical burn injury or ruin your toy (product). To avoid battery leakage:
- Do not mix old and new batteries or batteries of different types (alkaline, standard/carbon-zinc/or rechargeable (nickel cadmium)).
- Insert batteries as indicated inside the battery compartment.
- Remove batteries during long periods of non-use. Always remove exhausted batteries from the toy/product. Dispose of batteries safely. Do not dispose of batteries in a fire. The batteries may explode or leak.
- Never short-circuit the battery terminals.
- Use only batteries of the same or equivalent type, as recommended.
- Do not charge non-rechargeable batteries.
- Remove rechargeable batteries from the toy/product before recharging.
- If removable rechargeable batteries are used, they are only to be charged under adult supervision.

Battery performance Note:

For best performance use alkaline batteries/where disposable batteries are called for. If your vehicle is supplied with standard (carbon-zinc) batteries for initial use and/or demonstration purposes, we recommend replacing them with alkaline batteries when necessary. Battery life may vary depending on battery brand.

8 SAFETY INFORMATION

Adults, this toy is recommended for children 5 years of age and older. To ensure that the child's play is both safe and fun, please read the instructions carefully with you child.

- NEVER drive your vehicle on streets! They're for real cars!
- DO NOT pick up vehicle while in motion.
- Keep fingers, hair and loose clothing away from the tires and the wheel hubs while the vehicle is switched ON.
- Adult supervision is recommended when this vehicle is being operated.
- To avoid accidental operation, remove all batteries when not in use.

WARNING:
CHOKING HAZARD-Small parts
Not for children under 3 years

Keep these instructions for future reference; they contain important information.

amper

INSTRUCTIONS

STUNTING STUNTS!

1 CONTENTS/FEATURES

1. Crashworthy wheel
2. Front-wheel drive of relative arm
3. Relative arm
4. Trailing wheel of relative arm

Transmitter

1. Forward and backward button
2. Reversible button to the back arm
3. Reversible button to the front arm
4. Antenna

NOTE: Your transmitter is equipped with a special automatic ON battery-saving feature. Just turn your vehicle ON. Then push either transmitter control and you will be able to run and control your vehicle.

2 QUICK START

Please read this Owner's Manual thoroughly.

1. Start with a full charge.
2. Turn vehicle switch ON. Activate transmitter to run and control your vehicle.
3. After you've done driving turn vehicle switch OFF. Remove all batteries for storage.

3 BASIC DRIVING



1. Forward

2. Reverse



1. Left Turn Eddy

2. Right Turn Eddy

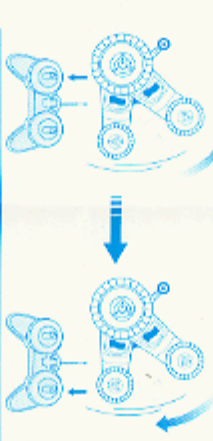
If your vehicle hits an object, the impact may cause the lock mechanism to disengage. This feature is designed to protect the vehicle components.

4 COOL STUNTS

Your vehicle can do all kinds of amazing stunts...here are a few ideas to get you started. Once you start driving your vehicle you'll realize it can perform lots of other your exciting stunts! So drive your vehicle with your imagination, and come up with your own awesome stunts!

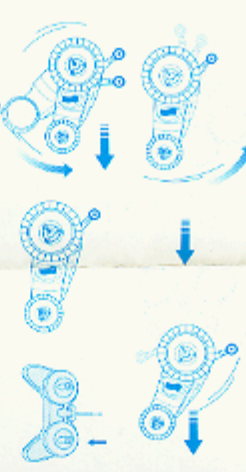
1 Relative arm control!

Lay the car horizontally. The steel arm will swing upwards or pressing the button on the left front end. The other way round it'll return to its original place when pressing the button on the right front end.



2 Keel over!

Lay the car horizontally. Press the button on the right front end to turn the back wheel. The back wheel will turn away from the original model until locking back.



3. When power supply energy you can drive your vehicle, use your imagination, and come up with your own awesome stunts!



Free direction turning, matching

low speed marching



High speed marching

Freezing marching

Turn-over marching

Changes or modifications not expressly approved the party responsible for compliance could void the user's authority to operate the equipment.