



FCC 47 CFR PART 22 SUBPART H

TEST REPORT

For

Applicant : SHENZHEN KONKA TELECOMMUNICATION
TECHNOLOGY CO., LTD.

Address : No.9008 Shennan Road, Overseas Chinese Town,
Shenzhen, Guangdong, China

Product Name : GSM Dual Band GPRS Digital Mobile Phone

Model Name : TV9

Brand Name : bmobile

FCC ID : UT3KKT9

Report No. : STS100408F2

Date of Issue : April 30, 2010

Issued by : Shenzhen Super Test Service Technology Co., Ltd.

Address : No.5, Langshan 2nd Rd., North Hi-Tech Industrial Park ,Nanshan,
Shenzhen, Guangdong ,China

Tel : 86-755-2795 8522

Fax : 86-755-2795 8022

The report consists 42 pages in total. It may be duplicated completely for legal use with the approval of the applicant. It should not be reproduced except in full, without the written approval of our laboratory. The client should not use it to claim product endorsement by STS. The test results in the report only apply to the tested sample. The test report shall be invalid without all the signatures of testing engineers, reviewer and approver.

TABLE OF CONTENTS

| | |
|--|----|
| 1. VERIFICATION OF CONFORMITY | 4 |
| 2. GENERAL INFORMATION | 5 |
| 2.1 Product Information | 5 |
| 2.2 Objective | 6 |
| 2.3 Test Standards and Results | 6 |
| 2.4 Environmental Conditions | 6 |
| 3. TEST FACILITY | 7 |
| 4. TEST EQUIPMENT LIST | 8 |
| 5. 47 CFR Part 2, Part 22H Requirements | 9 |
| 5.1 General Information | 9 |
| 5.1.1 Conducted Related Tests | 9 |
| 5.1.2 Radiated Power and Spurious Emission Tests | 9 |
| 5.1.3 Frequency Stability Test | 10 |
| 6. FREQUENCIES | 11 |
| 6.1. Requirement | 11 |
| 6.2 Test Procedure | 11 |
| 6.3 Test Result | 11 |
| 7. Conducted RF Output Power | 13 |
| 7.1 Requirement | 13 |
| 7.2 Test Procedure | 13 |
| 7.3 Test Result | 13 |
| 8. OCCUPIED BANDWIDTH | 16 |
| 8.1 Occupied Bandwidth Definition | 16 |
| 8.2 Test Procedure | 16 |
| 8.3 Test Result | 16 |
| 9. CONDUCTED SPURIOUS EMISSION | 19 |
| 9.1 Requirement | 19 |
| 9.2 Test Procedure | 19 |
| 9.3 Test Result | 20 |
| 10. Transmitter Radiated Power (EIRP/ERP) | 25 |
| 10.1 Requirement | 25 |
| 10.2 Test Procedure | 25 |
| 10.3 Test Result | 25 |
| 11. Radiated Spurious Emission | 26 |
| 11.1 Requirement | 26 |
| 11.2 Test Procedure | 26 |

11.3 Test Result..... 27

12. Frequency Stability 28

12.1 Frequency Stability Requirement..... 28

12.2 Test Procedure 28

12.3 Test Result..... 29

APPENDIX 1 30

PHOTOGRAPHS OF TEST SETUP 30

APPENDIX 2 33

PHOTOGRAPHS OF EUT 33

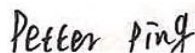
1. VERIFICATION OF CONFORMITY

Equipment Under Test: GSM Dual Band GPRS Digital Mobile Phone
Brand Name: bmobile
Model Number: TV9
FCC ID: UT3KKT9
Applicant: SHENZHEN KONKA TELECOMMUNICATION TECHNOLOGY CO., LTD.
No.9008 Shennan Road, Overseas Chinese Town, Shenzhen, Guangdong, China
Manufacturer: SHENZHEN KONKA TELECOMMUNICATION TECHNOLOGY CO., LTD.
No.9008 Shennan Road, Overseas Chinese Town, Shenzhen, Guangdong, China
Technical Standards: 47 CFR Part 2
47 CFR Part 22 Subpart H
File Number: STS100408F2
Date of test: April 20, 2010 ~ April 30, 2010
Deviation: None
Condition of Test Sample: Normal
Test Result: PASS

The above equipment was tested by Shenzhen Super Test Service Technology Co., Ltd. for compliance with the requirements set forth in FCC rules and the Technical Standards mentioned above. This said equipment in the configuration described in this report shows the maximum emission levels emanating from equipment and the level of the immunity endurance of the equipment are within the compliance requirements.

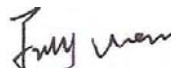
The test results of this report relate only to the tested sample identified in this report.

Tested by (+ signature):



Petter Ping April 30, 2010

Review by (+ signature):



July Wen April 30, 2010

Approved by (+ signature):



Terry Yang April 30, 2010

2. GENERAL INFORMATION

2.1 Product Information

| EUT1- Mobile Phone | |
|-------------------------------|---|
| Description: | GSM Dual Band GPRS Digital Mobile Phone |
| Model Name: | TV9 |
| Serial No.: | N/A |
| Model Difference description: | N/A |
| IMEI No.: | 359812030043223 |
| Frequency: | GSM 850MHz/1900MHz |
| Hardware Version: | v1.2 |
| Software Version: | KAATV9_TLC_En_CH_0.97.322 |
| EUT2- Battery | |
| Description: | Lithium-ion Battery |
| Model Name: | KLB100N152 |
| Brand Name: | bmoible |
| Manufacturer: | SHENZHEN KONKA TELECOMMUNICATION TECHNOLOGY CO., LTD. |
| Capacitance: | 1000 mAh |
| Rated Voltage: | 3.7V |
| Charge Limit: | 4.2V |
| EUT3 – Power Supply | |
| Description: | Travel Charger |
| Model Name: | KTC-08USB-D |
| Brand Name: | bmoible |
| Manufacturer: | SHENZHEN KONKA TELECOMMUNICATION TECHNOLOGY CO., LTD. |
| Rated Input: | AC 100-240V, 50/60HZ 150mA |
| Rated Output: | DC 5.0V, 500mA |
| Length USB cable: | 1.00m |

NOTE:

1. Please refer to Appendix I for the photographs of the EUT. For a more detailed features description about the EUT, please refer to User's Manual.
2. the EUT is a GSM Mobile Station, here only Cellular 850MHz band was tested in this report.
3. The transmitter (Tx) frequency arrangement of the Cellular 850MHz band for the EUT can be represented with a formula $F(n)=824.2+0.2*(n-128)$, $128 \leq n \leq 251$.
4. the normal voltage supply for the EUT is by the adapter, which are specified by the applicant.

2.2 Objective

The objective of the report is to perform tests according to 47 CFR Part 2, Part 22 for FCC ID Certification:

| No. | Identity | Document Title |
|-----|-------------------------------------|---|
| 1 | 47 CFR Part 2 (10-1-05 Edition) | Frequency Allocations and Radio Treaty Matters; General Rules and Regulations |
| 2 | 47 CFR Part 22 (10-1-05 Edition) | Public Mobile Services |

2.3 Test Standards and Results

Test items and the results are as bellow:

| No. | Rules | Test Type | Result | Date of Test |
|-----|-------------------------------|---|--------|--------------|
| 1 | §2.106 §22.905 | Frequencies | PASS | 2010-04-27 |
| 2 | §2.1046 | Conducted RF Output Power at Antenna Terminal | PASS | 2010-04-27 |
| 3 | §2.1049 | Occupied Bandwidth | PASS | 2010-04-27 |
| 4 | §2.1051 §2.1057 §22.917 | Conducted Spurious Emission at Antenna Terminal | PASS | 2010-04-27 |
| 5 | §22.913 | Transmitter Radiated Power (EIPR/ERP) | PASS | 2010-04-27 |
| 6 | §2.1053 §2.1057 §22.917 | Radiated Spurious Emission | PASS | 2010-04-27 |
| 7 | §2.1055 §22.355 | Frequency Stability | PASS | 2010-04-27 |

Note: 1. The test result judgment is decided by the limit of measurement standard
2. The information of measurement uncertainty is available upon the customer's request.

2.4 Environmental Conditions

During the measurement the environmental conditions were within the listed ranges:

- Temperature: 15-35°C
- Humidity: 30-60 %
- Atmospheric pressure: 86-106 kPa

3. TEST FACILITY

| | |
|-----------------------|---|
| Test Site: | Most Technology Service Co. Ltd. |
| Location: | No.5, Langshan 2nd Rd., North Hi-Tech Industrial Park , Nanshan, Shenzhen, Guangdong ,China |
| Description: | There is one 3m semi-anechoic an area test sites and two line conducted labs for final test. The Open Area Test Sites and the Line Conducted labs are constructed and calibrated to meet the FCC requirements in documents ANSI C63.4:2003 and CISPR 16 requirements. The FCC Registration Number is 490827 . |
| Site Filing: | The site description is on file with the Federal Communications Commission, 7435 Oakland Mills Road, Columbia, MD 21046. |
| Instrument Tolerance: | All measuring equipment is in accord with ANSI C63.4:2003 and CISPR 16 requirements that meet industry regulatory agency and accreditation agency requirement. |
| Ground Plane: | Two conductive reference ground planes were used during the Line Conducted Emission, one in vertical and the other in horizontal. The dimensions of these ground planes are as below. The vertical ground plane was placed distancing 40 cm to the rear of the wooden test table on where the EUT and the support equipment were placed during test. The horizontal ground plane projected 50 cm beyond the footprint of the EUT system and distanced 80 cm to the wooden test table. For Radiated Emission Test, one horizontal conductive ground plane extended at least 1m beyond the periphery of the EUT and the largest measuring antenna, and covered the entire area between the EUT and the antenna. |

4. TEST EQUIPMENT LIST

Instrumentation: The following list contains equipment used at Most for testing. The equipment conforms to the CISPR 16-1 / ANSI C63.2 Specifications for Electromagnetic Interference and Field Strength Instrumentation from 10 kHz to 1.0 GHz or above.

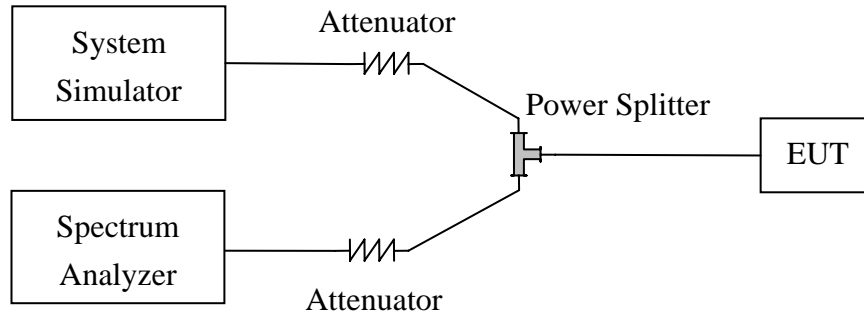
| No. | Equipment | Manufacturer | Model No. | S/N | Calibrator due date |
|-----|--------------------------------------|-------------------|----------------|-------------|---------------------|
| 1 | Test Receiver | Rohde & Schwarz | ESCI | 100492 | 2011/03/14 |
| 2 | L.I.S.N. | Rohde & Schwarz | ENV216 | 100093 | 2011/03/14 |
| 3 | Coaxial Switch | Anritsu Corp | MP59B | 6200283933 | 2011/03/14 |
| 4 | Terminator | Hubersuhner | 50Ω | No.1 | 2011/03/14 |
| 5 | RF Cable | SchwarzBeck | N/A | No.1 | 2011/03/14 |
| 6 | Test Receiver | Rohde & Schwarz | ESPI | 101202 | 2011/03/14 |
| 7 | Bilog Antenna | Sunol | JB3 | A121206 | 2011/03/14 |
| 8 | Cable | SchwarzBeck | N/A | NO.1 | 2011/03/14 |
| 9 | Cable | SchwarzBeck | N/A | NO.2 | 2011/03/14 |
| 10 | Cable | SchwarzBeck | N/A | NO.3 | 2011/03/14 |
| 11 | DC Power Filter | DuoJi | DL2×30B | N/A | 2011/03/14 |
| 12 | Single Phase Power Line Filter | DuoJi | FNF 202B30 | N/A | 2011/03/14 |
| 13 | 3 Phase Power Line Filter | DuoJi | FNF 402B30 | N/A | 2011/03/14 |
| 14 | Test Receiver | Rohde & Schwarz | ESCI | 100492 | 2011/03/14 |
| 15 | Absorbing Clamp | Luthi | MDS21 | 3635 | 2011/03/14 |
| 16 | Coaxial Switch | Anritsu Corp | MP59B | 6200283933 | 2011/03/14 |
| 17 | AC Power Source | Kikusui | AC40MA | LM003232 | 2011/03/14 |
| 18 | Test Analyzer | Kikusui | KHA1000 | LM003720 | 2011/03/14 |
| 19 | Line Impedance Network | Kikusui | LIN40MA-PCR-L | LM002352 | 2011/03/14 |
| 20 | ESD Tester | Kikusui | KES4021 | LM003537 | 2011/03/14 |
| 21 | EMC PRO System | EM Test | UCS-500-M4 | V0648102026 | 2011/03/14 |
| 22 | Signal Generator | IFR | 2032 | 203002/100 | 2011/03/14 |
| 23 | Amplifier | A&R | 150W1000 | 301584 | 2011/03/14 |
| 24 | CDN | FCC | FCC-801-M2-25 | 47 | 2011/03/14 |
| 25 | CDN | FCC | FCC-801-M3-25 | 107 | 2011/03/14 |
| 26 | EM Injection Clamp | FCC | F-203I-23mm | 403 | 2011/03/14 |
| 27 | RF Cable | MIYAZAKI | N/A | No.1/No.2 | 2011/03/14 |
| 28 | Universal Radio Communication Tester | ROHDE&SCHWARZ | CMU200 | 0304789 | 2011/03/14 |
| 29 | Telecommunication Antenna | European Antennas | PSA 75301R/170 | 0304213 | 2011/03/14 |
| 30 | Spectrum Analyzer | Agilent | E4408 | MY41440460 | 2011/03/14 |
| 31 | Horn Antenna | SCHWARZBECK | BBHA9120D | D69250 | 2011/03/14 |

NOTE: Equipments listed above have been calibrated and are in the period of validation.

5. 47 CFR Part 2, Part 22H Requirements

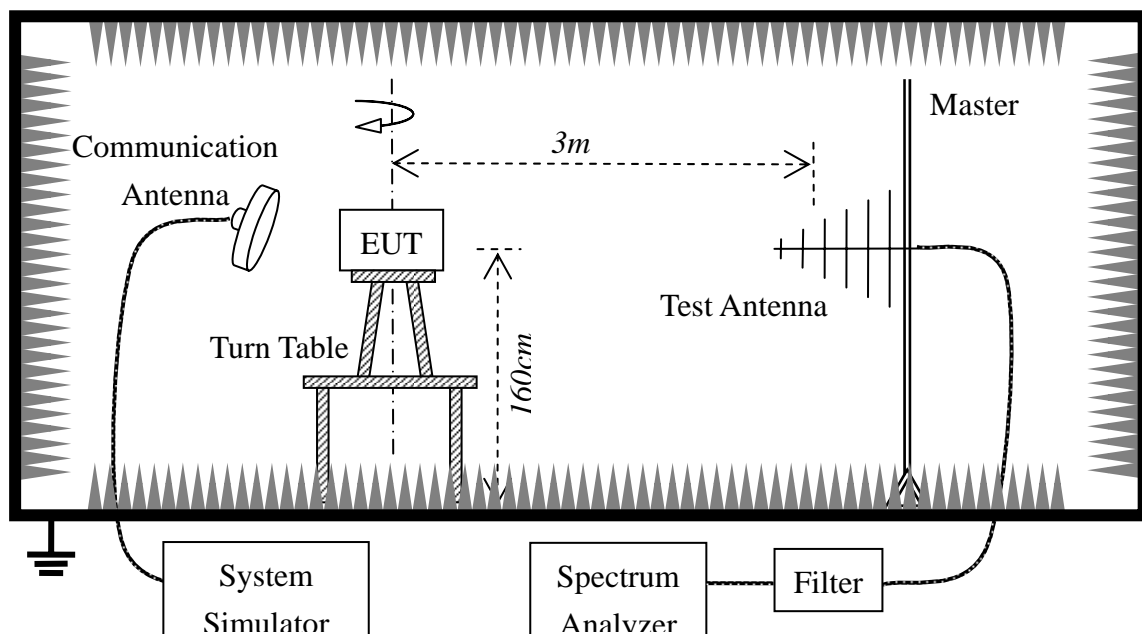
5.1 General Information

5.1.1 Conducted Related Tests



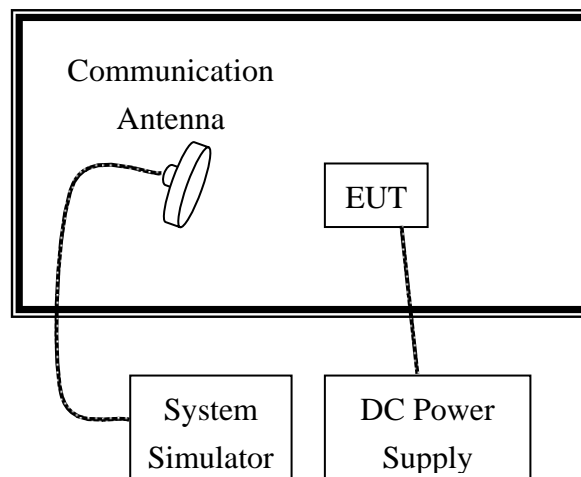
1. The EUT is coupled to the Spectrum Analyzer and the System Simulator with the suitable Attenuators through the Power Splitter; the path loss is calibrated to correct the reading.
2. The EUT is configured here as MS + Battery.
3. The EUT is commanded via the System Simulator (SS) to operate at the maximum output power i.e. Power Control Level (PCL) = 5 and Power Class = 4.
4. The BCCH number of the SS used here is 200. A communication link is established between the EUT and the SS.
5. The Spectrum Analyzer is set to max-peak detector function and maximum hold mode.

5.1.2 Radiated Power and Spurious Emission Tests



1. The test is performed in a full-Anechoic Chamber; the air loss of the site and the factors of the test system are pre-calibrated using the substitution method.
2. The EUT is configured as MS + Battery.
3. The EUT is placed on the vertical axis of a Turn Table 1.62 meters above the ground.
4. The Test Antenna is a bi-log one or a horn one, and the Test Antenna is at the same height as the EUT.
5. The EUT is commanded via the System Simulator (SS) to operate at the maximum output power i.e. Power Control Level (PCL) = 5 and Power Class = 4.
6. The BCCH number of the SS used here is 200. A communication link is established between the EUT and the SS.
7. The Spectrum Analyzer is set to max-peak detector function and maximum hold mode.

5.1.3 Frequency Stability Test



1. The test is performed in a Temperature Chamber.
2. The EUT is configured as MS + DC Power Supply.
3. The BCCH number of the SS used here is 200.

6. FREQUENCIES

6.1. Requirement

According to FCC §22.905, the frequencies blocks assignment for the Cellular Radiotelephone Service are listed as below.

(a) Channel Block A:

Mobile 824 - 835MHz, Base 869 - 880MHz;

Mobile 845 - 846.5MHz, Base 890 - 891.5MHz

(b) Channel Block B:

Mobile 835 - 845 MHz, Base 880 - 890MHz;

Mobile 846.5 - 849 MHz, Base 891.5 - 894MHz

6.2 Test Procedure

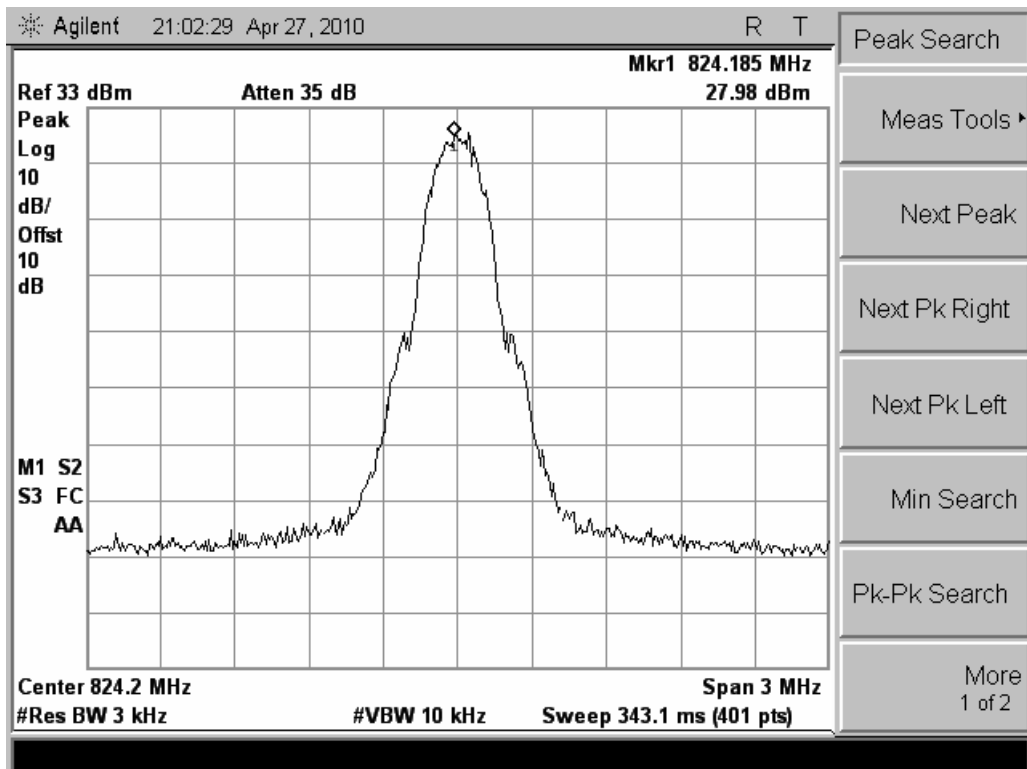
1. Perform test system setup as section 5.1.1.
2. Perform test configuration as section 5.1
3. The resolution bandwidth (RBW) of the Spectrum Analyzer was set to at least 1% of the emission bandwidth of the fundamental emission of the transmitter, e.g. for GSM modulated signal (here used): RBW=VBW=3 kHz, for CDMA modulated signal: RBW=VBW=30 kHz.
4. The transmitter frequency arrangement of the GSM850MHz band is $F(n)=824.2+0.2*(n-128)$, $128 \leq n \leq 251$. The lowest and the highest channel were selected to perform tests respectively. Set the TCH number to 128.
5. Set the Spectrum Analyzer suitably to capture the waveform, search peak and mark, and then record the plot.
6. Set the TCH number to 251, then repeat step 5.

6.3 Test Result

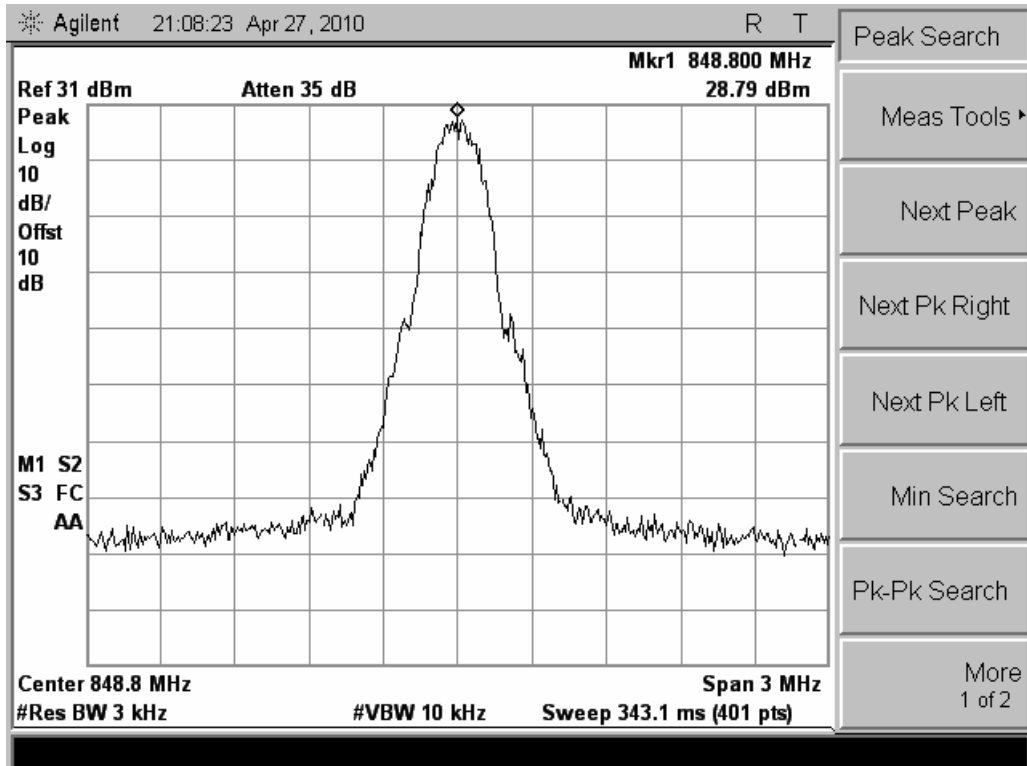
The transmitter (Tx) frequency arrangement of the Cellular 850MHz band is represented with a formula

$F(n) = 824.2+0.2*(n-128)$, $128 \leq n \leq 251$. The frequencies of the lowest channel and the highest channel are listed as follows.

1. Plot when the TCH number set to 128:



2. Plot when the TCH number set to 251:



7. Conducted RF Output Power

7.1 Requirement

According to FCC §2.1046 (a), for transmitters other than single sideband, independent sideband and controlled carrier radiotelephone, power output shall be measured at the RF output terminals when the transmitter is adjusted in accordance with the tune-up procedure to give the values of current and voltage on the circuit elements specified in §2.1033 (c)(8). The electrical characteristics of the radio frequency load attached to the output terminals when this test is made shall be stated.

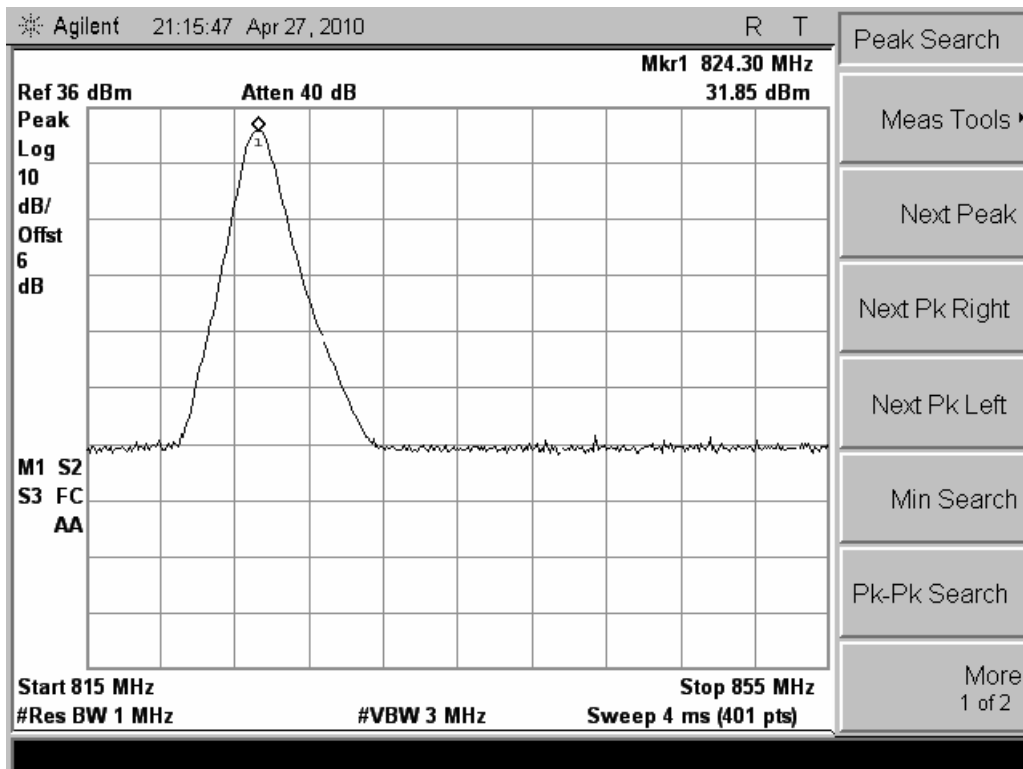
7.2 Test Procedure

1. Perform test system setup as section 5.1.1. (The radio frequency load attached to the EUT antenna terminal is 50Ω).
2. The resolution bandwidth of the Spectrum Analyzer is set to be comparable to the emission bandwidth of the transmitter, e.g. for GSM modulated signal (here used): RBW=VBW=1MHz, for CDMA modulated signal: RBW=VBW=3MHz.
3. The low, middle and the high channels are selected to perform tests respectively. Set the TCH number to 128 as the low channel.
4. Set the frequency range of the Spectrum Analyzer suitably to capture the waveform; search peak and mark it; finally record the peak and the plot.
5. Set the TCH number to 190 as the middle channel, then repeat step 4.
6. Set the TCH number to 251 as the high channel, then repeat step 4.

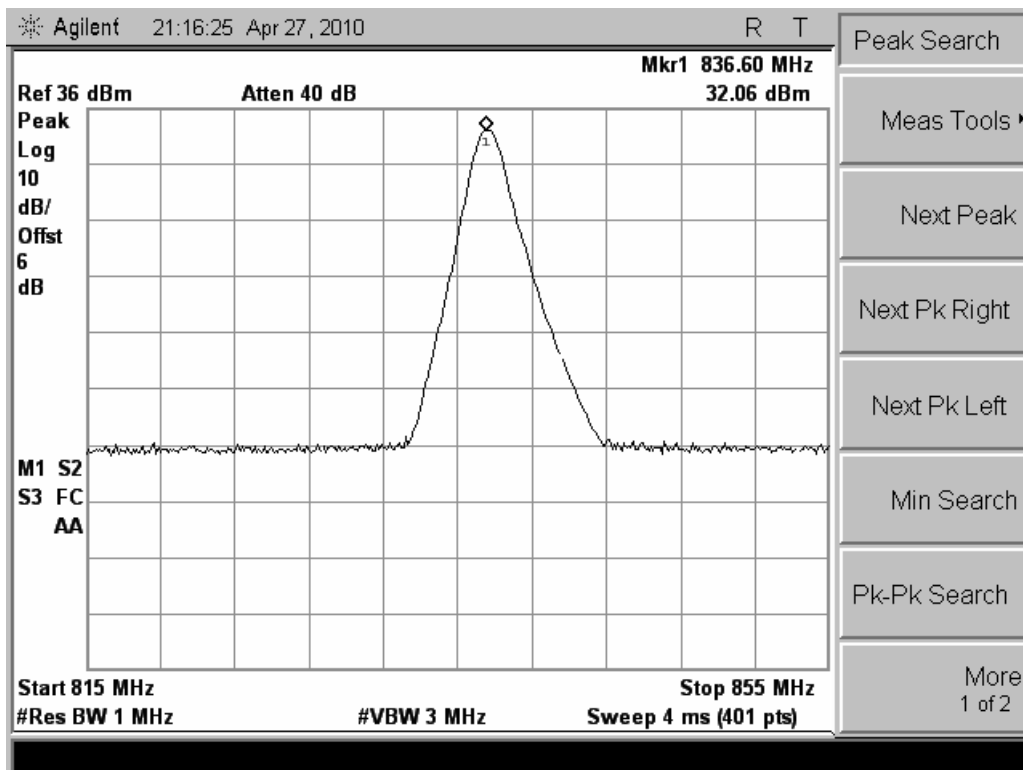
7.3 Test Result

| No. | Channel Number | Frequency (MHz) | Measured Power | | Rated Power | |
|-----|----------------|-----------------|----------------|-------|-------------|---|
| | | | dBm | W | dBm | W |
| 1 | 128 | 824.2 | 31.85 | 1.531 | 33 | 2 |
| 2 | 190 | 836.6 | 32.06 | 1.607 | 33 | 2 |
| 3 | 251 | 848.8 | 32.12 | 1.629 | 33 | 2 |

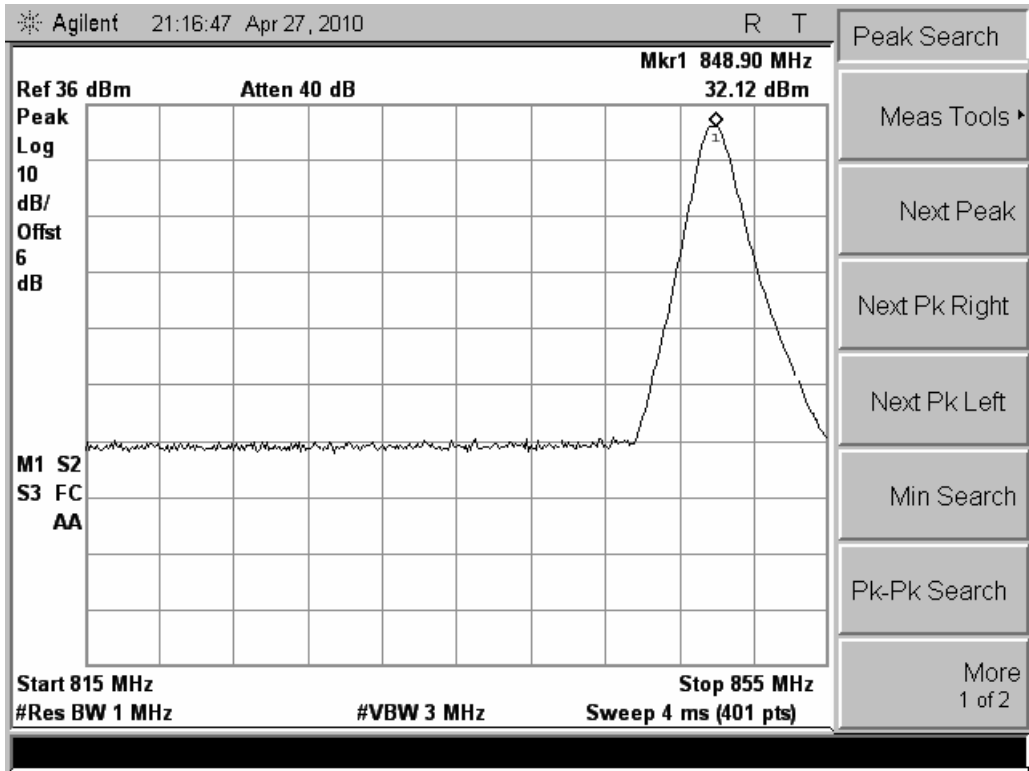
1. Plot when the TCH number set to 128:



2. Plot when the TCH number set to 190:



3. Plot when the TCH number set to 251:



8. OCCUPIED BANDWIDTH

8.1 Occupied Bandwidth Definition

According to FCC §2.1049, the occupied bandwidth is the frequency bandwidth such that, below its lower and above its upper frequency limits, the mean powers radiated are each equal to 0.5 percent of the total mean power radiated by a given emission.

Occupied bandwidth is also known as the 99% emission bandwidth, or 20dB bandwidth ($10 \cdot \log 1\%$ is equal to 20dB) taking the total RF output power as reference.

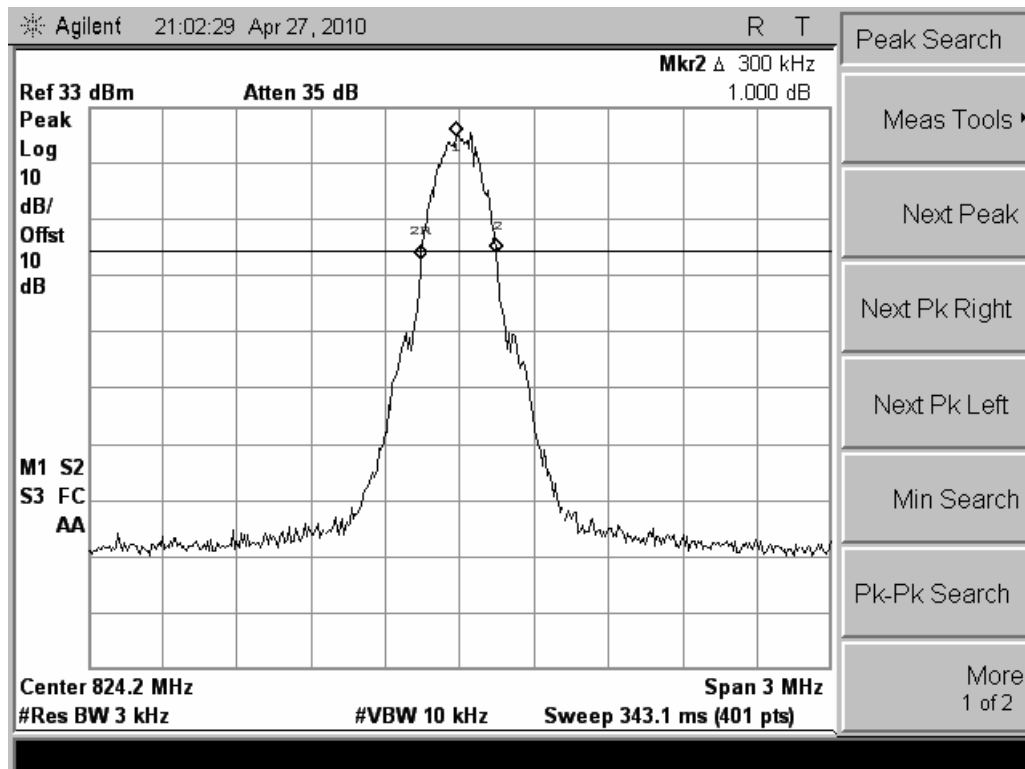
8.2 Test Procedure

1. Perform test system setup as section 5.1.1
2. The resolution bandwidth of the Spectrum Analyzer is set to at least one percent of the emission bandwidth, e.g. for GSM modulated signal (here used): RBW=VBW=3 kHz, for CDMA modulated signal: RBW=VBW=30 kHz.
3. The low, middle and the high channels are selected to perform tests respectively. Set the TCH number to 128 as the low channel.
4. Set the frequency range of the Spectrum Analyzer suitably to capture the waveform; search peak; make a line whose value is 20dB lower than the peak; mark two points which the line intersected the waveform at; finally record the delta of the two points as the occupied bandwidth and the plot.
5. Set the TCH number to 190 as middle channel, then repeat step 4.
6. Set the TCH number to 251 as high channel, then repeat step 4.

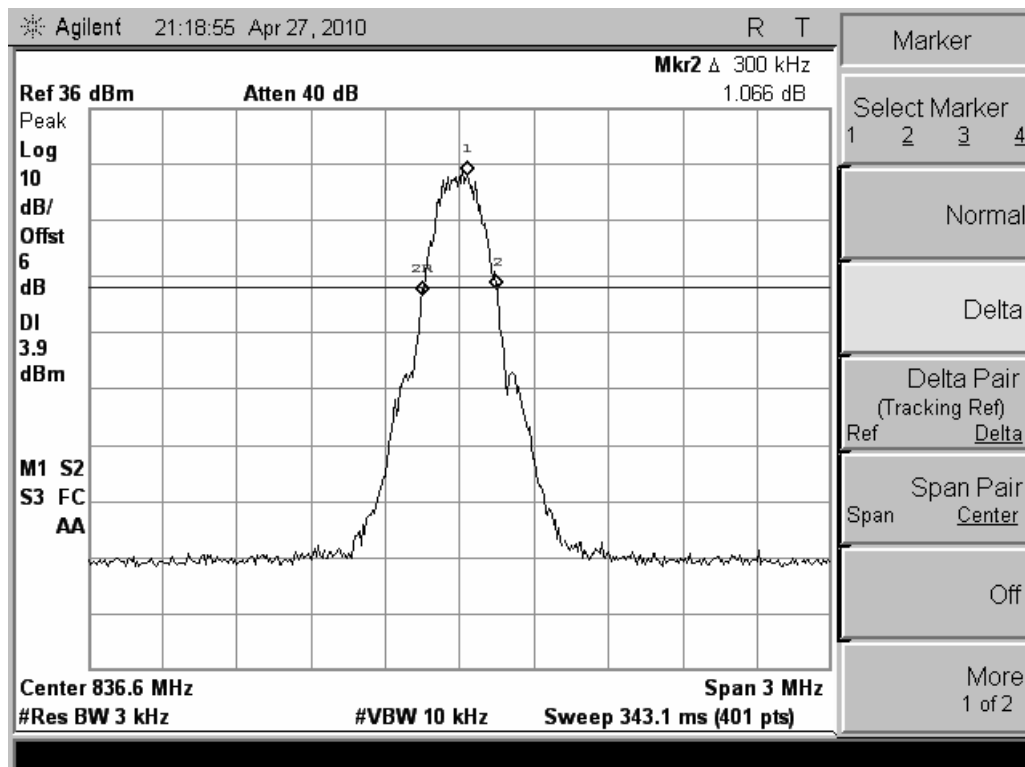
8.3 Test Result

| No. | Channel | Frequency (MHz) | Measured Occupied Bandwidth (kHz) |
|-----|---------|-----------------|-----------------------------------|
| 1 | 128 | 824.2 | 300.0 |
| 2 | 190 | 836.6 | 300.0 |
| 3 | 251 | 848.8 | 300.0 |

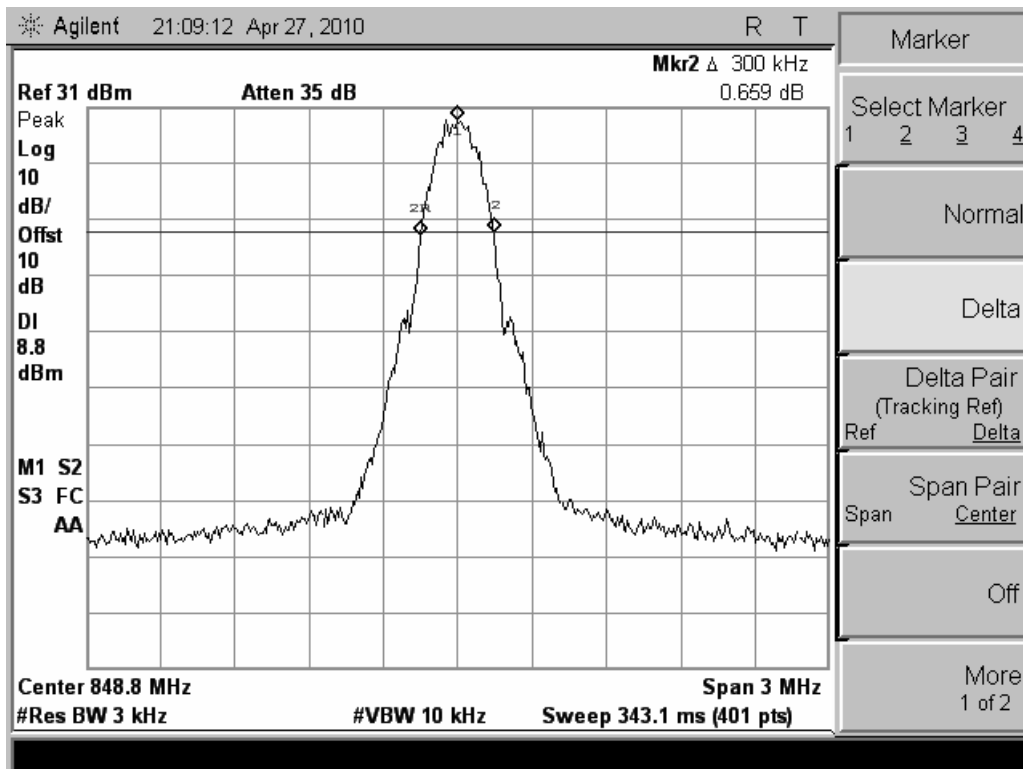
1. Plot when the TCH number set to 128:



2. Plot when the TCH number set to 190:



3. Plot when the TCH number set to 251:



9. CONDUCTED SPURIOUS EMISSION

9.1 Requirement

According to FCC §22.917(a), the power of any emission outside of the authorized operating frequency ranges must be attenuated below the transmitting power (P) by a factor of at least $43+10\log(P)$ dB. This calculated to be -13dBm.

According to FCC §22.917 (a), in the 1MHz bands immediately outside and adjacent to the frequency block a resolution bandwidth of at least one percent of the emission bandwidth of the fundamental emission of the transmitter may be employed. Thus the 26dB emission bandwidth is measurement for showing compliance at the band-edge.

9.2 Test Procedure

1. Perform test system setup as section 5.1.1.
2. Make a limit line whose value is -13dBm on the Spectrum Analyzer.
3. The lowest, middle and the highest channels are selected to perform tests respectively. Set the TCH number to 128 as the lowest channel.
4. Set the RBW of the Spectrum Analyzer to 1MHz, and the measuring frequency range from 9kHz to 10th harmonic of the fundamental frequency (here used 26.5GHz); mark the fundamental frequency and the harmonics thereof; finally record the harmonics and the plot. Note, the measuring frequency range can be divided into several parts to perform tests.
5. In the 1MHz bands immediately outside and adjacent to the frequency block, the RBW of the Spectrum Analyzer was set to at least one percent of the emission bandwidth of the fundamental emission of the transmitter, e.g. for GSM modulated signal (here used): RBW=3kHz, for CDMA modulated signal: RBW=30kHz.
6. Set the TCH number to 190 as the middle channel, then repeat step 4.
7. Set the TCH number to 251 as the highest channel, then repeat step 4 and 5.

9.3 Test Result

Table for the Harmonics and Plots for the Spurious Emission

1. Table for the Harmonics:

NOTE: “---” in the table following means that the emission power was too small to be measured and was at least 12dB below the limit.

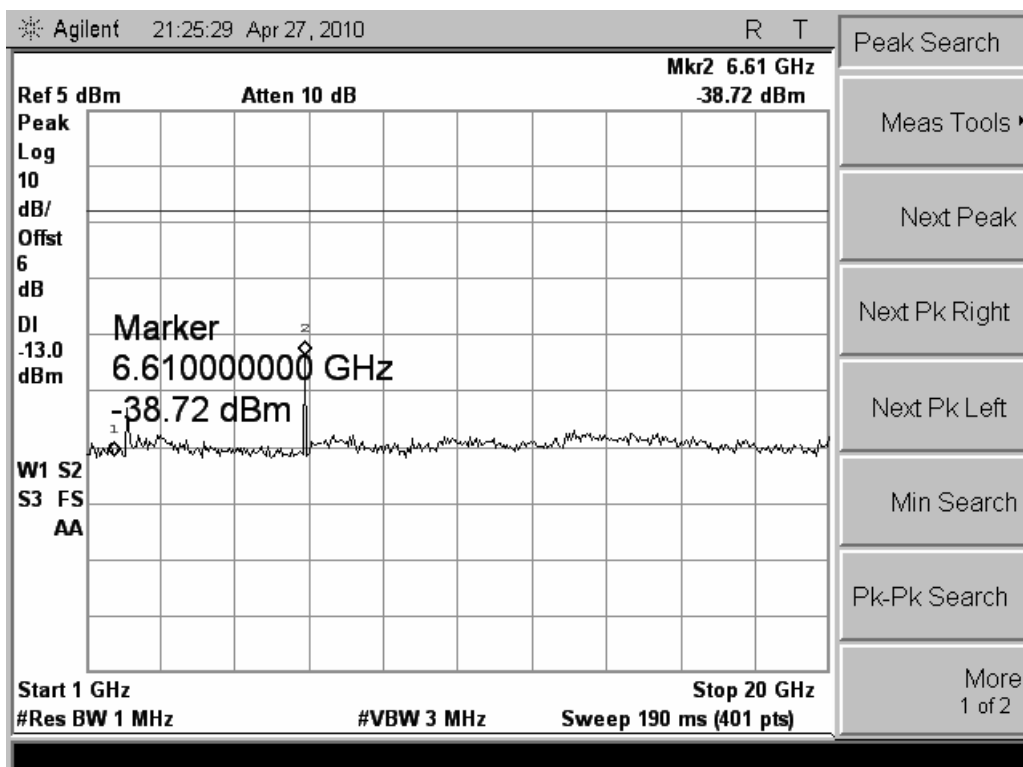
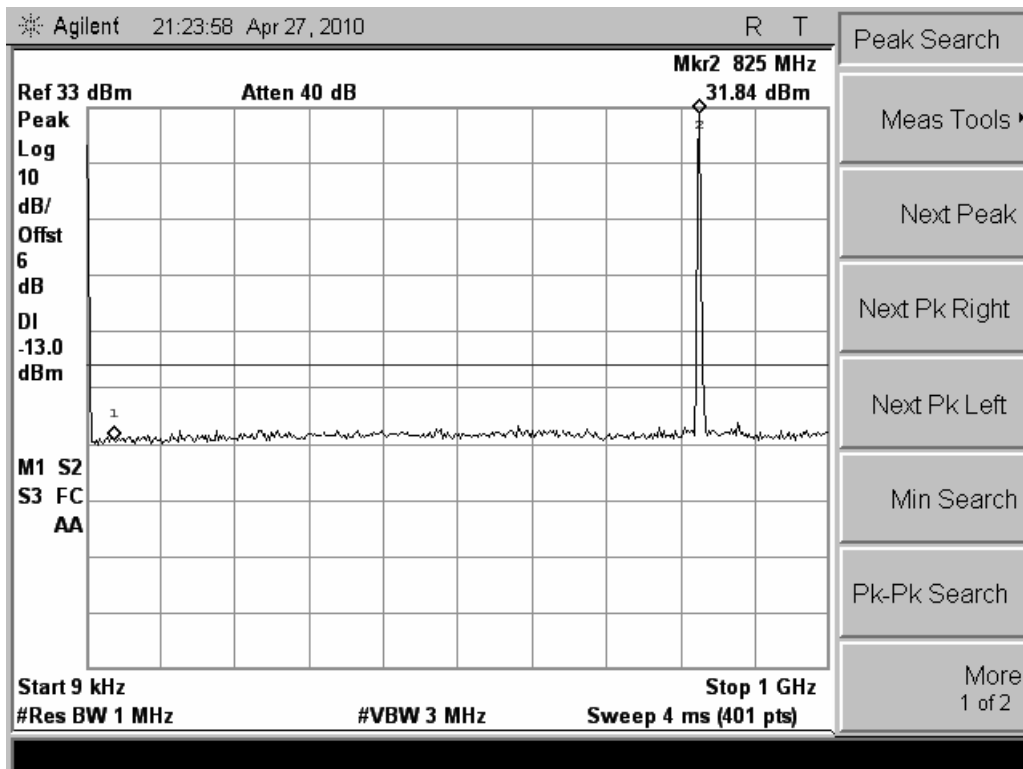
| No. | Frequency (MHz) | Emission Power (dBm) | Limit (dBm) |
|-----------------------------------|-----------------|----------------------|-------------|
| TCH number set to 128 (824.20MHz) | | | |
| 1 | 1670.00 | --- | -13 |
| 2 | 2460.00 | --- | -13 |
| 3 | 3296.80 | --- | -13 |
| 4 | 4121.00 | --- | -13 |
| 5 | 4945.20 | --- | -13 |
| 6 | 5769.40 | --- | -13 |
| 7 | 6610.60 | -38.72 | -13 |
| 8 | 7417.80 | --- | -13 |
| 9 | 8242.00 | --- | -13 |
| TCH number set to 190 (836.60MHz) | | | |
| 10 | 1670.20 | -25.86 | -13 |
| 11 | 2520.00 | --- | -13 |
| 12 | 3346.40 | --- | -13 |
| 13 | 4183.00 | --- | -13 |
| 14 | 5019.60 | --- | -13 |
| 15 | 5856.20 | --- | -13 |
| 16 | 6692.80 | --- | -13 |
| 17 | 7529.40 | --- | -13 |
| 18 | 8366.00 | --- | -13 |
| TCH number set to 251 (848.80MHz) | | | |
| 19 | 1697.60 | -13.90 | -13 |
| 20 | 2580.00 | -21.69 | -13 |
| 21 | 3395.20 | --- | -13 |
| 22 | 4244.00 | --- | -13 |
| 23 | 5092.80 | --- | -13 |
| 24 | 5941.60 | --- | -13 |
| 25 | 6790.40 | --- | -13 |
| 26 | 7639.20 | --- | -13 |
| 27 | 8488.00 | --- | -13 |

2. Plot for Spurious Emission:

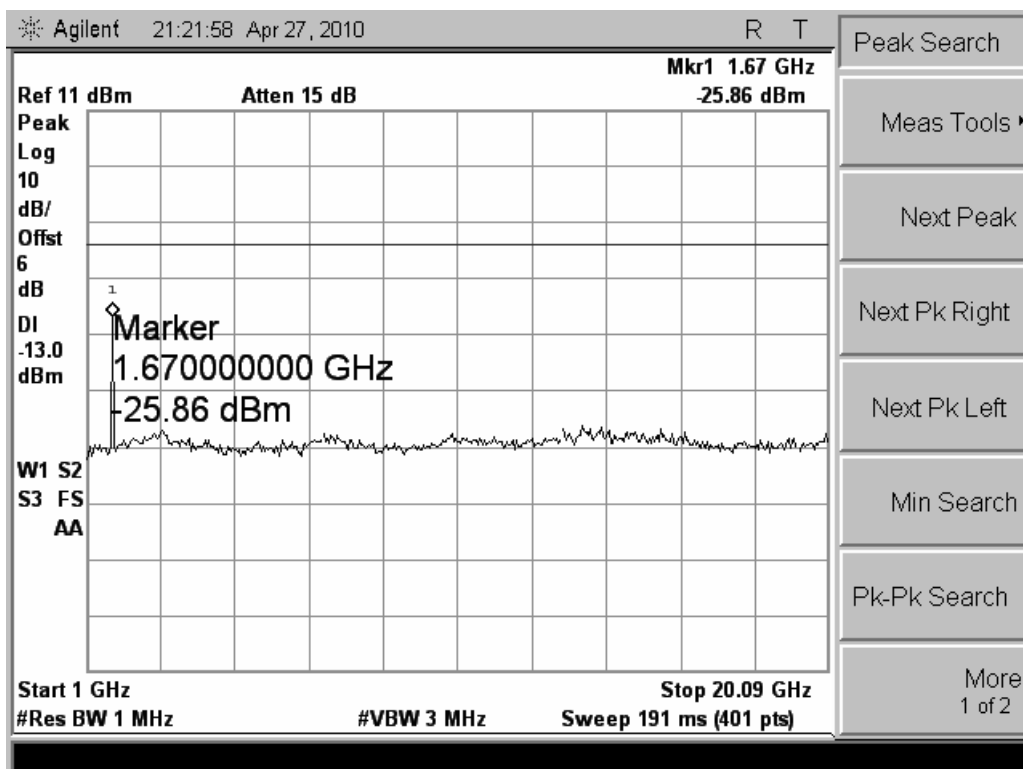
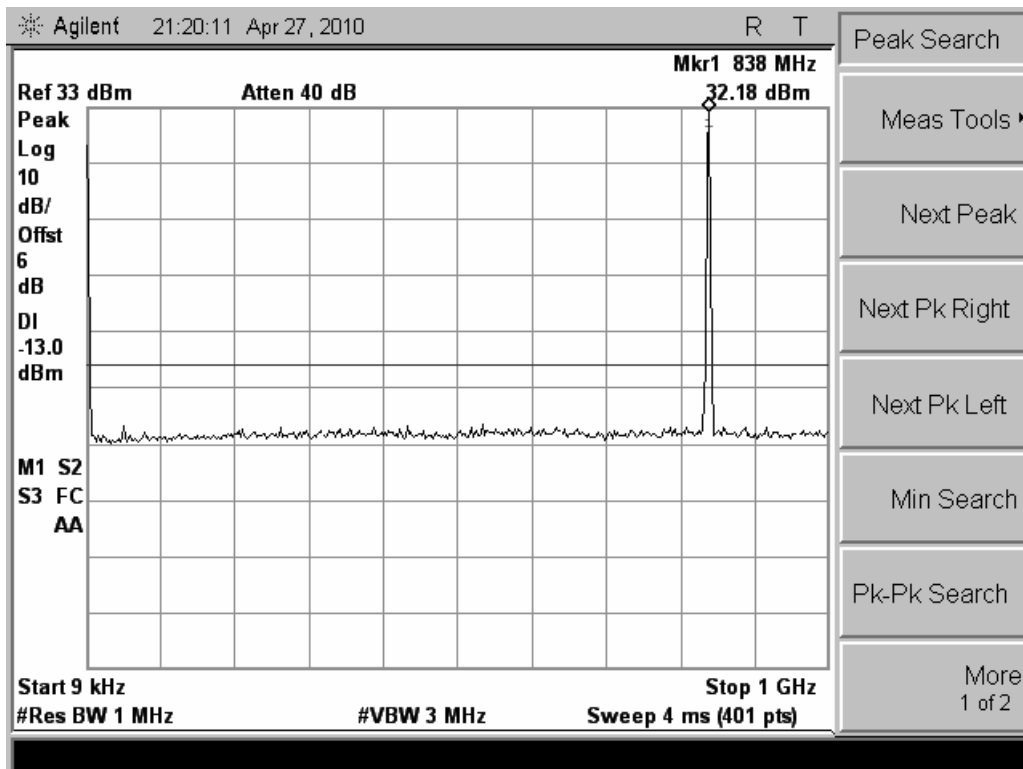
The measuring frequency range was from 9 kHz to 20GHz.

NOTE: The marker points are the Mobile Phone and/or System Simulator transmitting frequencies which should be ignored.

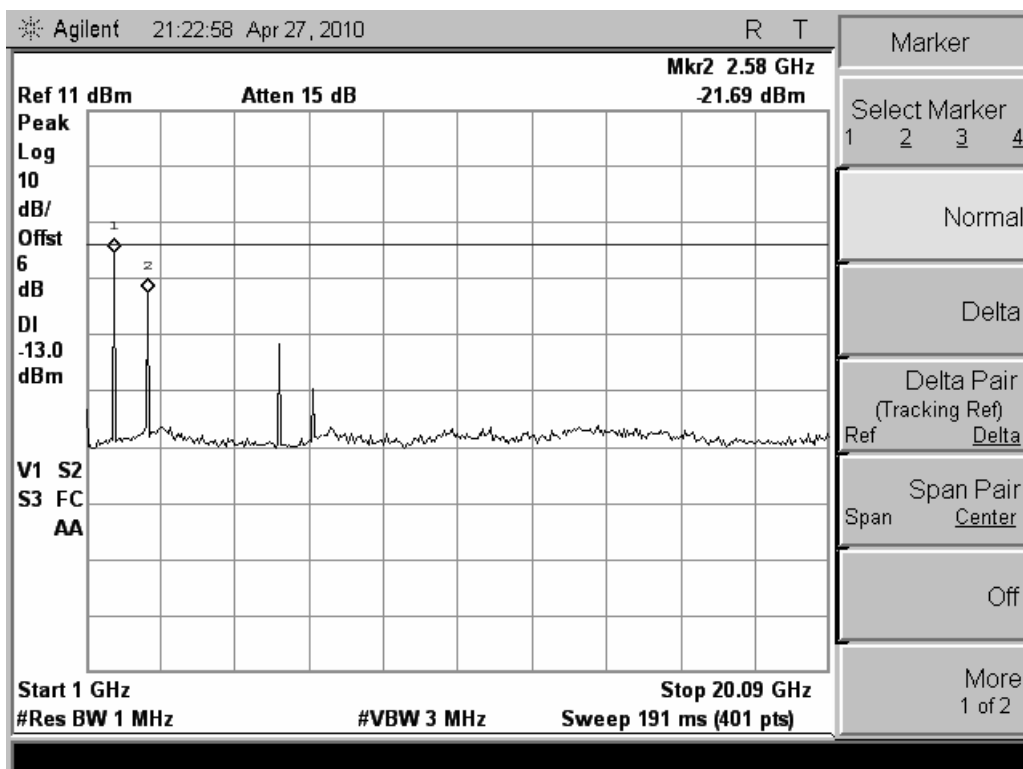
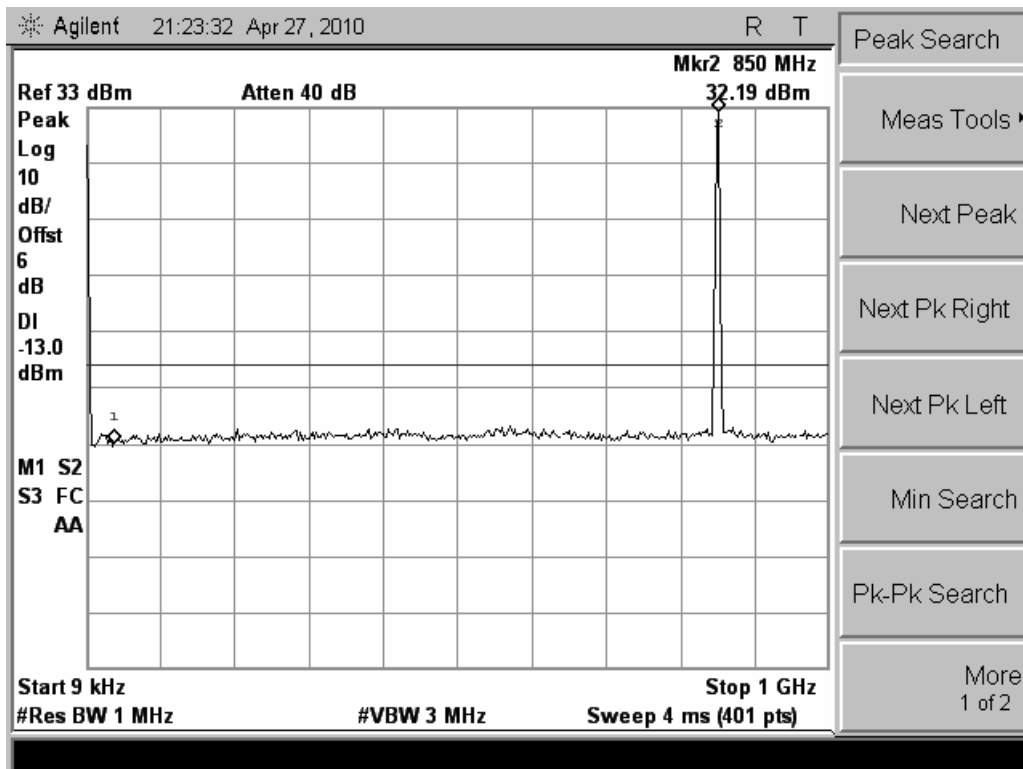
2.1 Plot when the TCH number set to 128:



2.2 Plot when the TCH number set to 190:

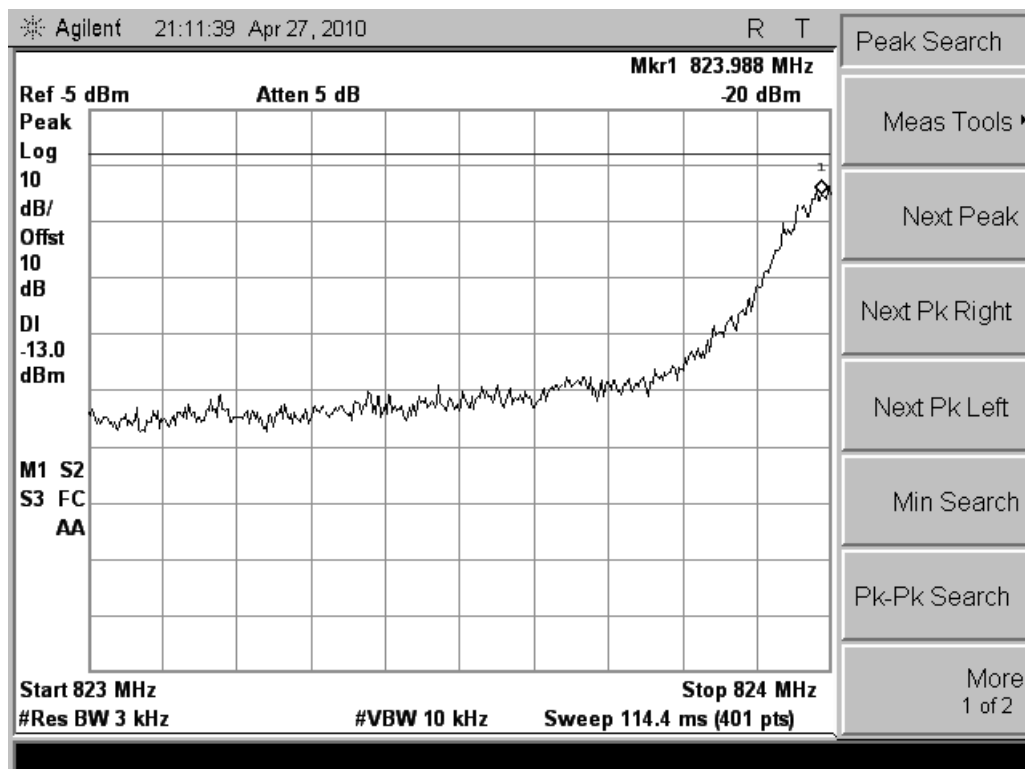


2.3 Plot when the TCH number set to 251:

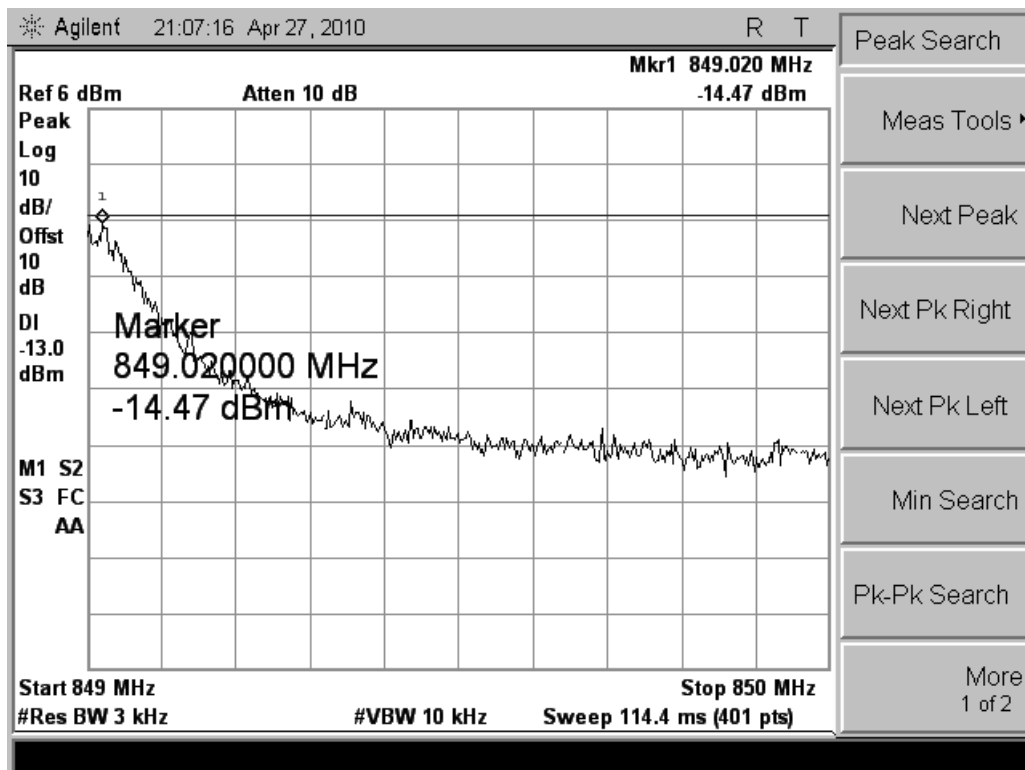


3. Plot for Band-edge

3.1 Plot when the TCH number set to 128:



3.2 Plot when the TCH number set to 251:



10. Transmitter Radiated Power (EIRP/ERP)

10.1 Requirement

According to FCC §22.913, the ERP of Cellular mobile transmitters must not exceed 7 Watts (38.5dBm).

10.2 Test Procedure

1. Perform test system setup as section 5.1.1.
2. The resolution bandwidth of the Spectrum Analyzer is set to be comparable to the emission bandwidth of the transmitter, e.g. for GSM modulated signal (here used): RBW=VBW=1MHz, for CDMA modulated signal: RBW=VBW=3MHz.
3. The low, middle and the high channels are selected to perform tests respectively. Set the TCH number to 128 as the low channel.
4. Employ the bi-log Test Antenna as the test system receiving antenna; set the polarization of the Test Antenna to be the same as that of the EUT transmitting antenna.
5. Set the frequency range of the Spectrum Analyzer suitably to capture the waveform; actuate the Turn Table to turn from 0 degrees to 360 degrees to find the maximum reading via the Spectrum Analyzer, mark the peak; finally record the peak and the plot.
6. Set the TCH number to 190 as the middle channel, then repeat step 5.
7. Set the TCH number to 251 as the high channel, then repeat step 5.

10.3 Test Result

| No. | Channel | Frequency (MHz) | Measured ERP | | Limit ERP | | Result |
|-----|---------|-----------------|--------------|-------|-----------|-----|--------|
| | | | dBm | W | dBm | W | |
| 1 | 128 | 824.20 | 32.09 | 1.618 | < 38.5 | < 7 | PASS |
| 2 | 190 | 836.60 | 32.36 | 1.722 | < 38.5 | < 7 | PASS |
| 3 | 251 | 848.80 | 32.24 | 1.675 | < 38.5 | < 7 | PASS |

11. Radiated Spurious Emission

11.1 Requirement

According to FCC §22.917(a), the power of any emission outside of the authorized operating frequency ranges must be attenuated below the transmitting power (P) by a factor of at least $43+10\log(P)$ dB. This calculated to be -13dBm.

11.2 Test Procedure

1. Perform test system setup as section 5.1.2.
2. Make a limit line whose value is -13dBm on the Spectrum Analyzer, and set the RBW of the Spectrum Analyzer to 1MHz.
3. The low, middle and the high channels are selected to perform tests respectively. Set the TCH number to 128 as the low channel.
4. Employ the bi-log Test Antenna as the test system receiving antenna and set the frequency range of the Spectrum Analyzer from 30MHz to 3GHz.
5. The measurement is performed with the Test Antenna at both horizontal and vertical polarization respectively. Set the polarization of the Test Antenna to be horizontal.
6. Actuate the Turn Table to turn from 0 degrees to 360 degrees to find the maximum reading via the Spectrum Analyzer, mark the fundamental frequency and the harmonics thereof, after then record the harmonics and the plot.
7. Set the polarization of the Test Antenna to be vertical, then repeat step 6.
8. Employ the horn Test Antenna as the test system receiving antenna and set the frequency range of the Spectrum Analyzer from 3GHz to 10th harmonic of the fundamental frequency (here used 10GHz), then repeat step 5 to 7.
9. Set the TCH number to 190 as the middle channel, then repeat step 4 to 8.
10. Set the TCH number to 251 as the high channel, then repeat step 4 to 8.

11.3 Test Result

Table for the Harmonics

NOTE: “---” in the table following means that the emission power was too small to be measured and was at least 12dB below the limit.

| No. | Frequency (MHz) | Emission Power (dBm) | | Limit (dBm) |
|-----------------------------------|-----------------|-----------------------|-------------------------|-------------|
| | | Test Antenna Vertical | Test Antenna Horizontal | |
| TCH number set to 128 (824.20MHz) | | | | |
| 1 | 1648.40 | --- | --- | -13 |
| 2 | 2472.60 | -25.43 | -30.09 | -13 |
| 3 | 3296.80 | --- | --- | -13 |
| 4 | 4121.00 | --- | --- | -13 |
| 5 | 4945.20 | --- | --- | -13 |
| 6 | 5769.40 | --- | --- | -13 |
| 7 | 6593.60 | --- | --- | -13 |
| 8 | 7417.80 | --- | --- | -13 |
| 9 | 8242.00 | --- | --- | -13 |
| TCH number set to 190 (836.60MHz) | | | | |
| 10 | 1673.20 | --- | --- | -13 |
| 11 | 2509.80 | -23.21 | -29.65 | -13 |
| 12 | 3346.40 | --- | --- | -13 |
| 13 | 4183.00 | --- | --- | -13 |
| 14 | 5019.60 | --- | --- | -13 |
| 15 | 5856.20 | --- | --- | -13 |
| 16 | 6692.80 | --- | --- | -13 |
| 17 | 7529.40 | --- | --- | -13 |
| 18 | 8366.00 | --- | --- | -13 |
| TCH number set to 251 (848.80MHz) | | | | |
| 19 | 1697.60 | --- | --- | -13 |
| 20 | 2546.40 | -24.06 | -30.32 | -13 |
| 21 | 3395.20 | --- | --- | -13 |
| 22 | 4244.00 | --- | --- | -13 |
| 23 | 5092.80 | --- | --- | -13 |
| 24 | 5941.60 | --- | --- | -13 |
| 25 | 6790.40 | --- | --- | -13 |
| 26 | 7639.20 | --- | --- | -13 |
| 27 | 8488.00 | --- | --- | -13 |

12. Frequency Stability

12.1 Frequency Stability Requirement

According to FCC §22.355, the frequency stability shall be sufficient to ensure that the fundamental emission stays within the authorized frequency block.

According to FCC §2.1055, the test conditions are:

(a) Temperature:

The temperature is varied from -30°C to +50°C at intervals of not more than 10°C.

(b) Primary Supply Voltage:

For hand carried battery powered equipment, the primary supply voltage is reduced to the battery operating end point which shall be specified by the manufacture. The supply voltage shall be measured at the input to the cable normally provided with the equipment, or at the power supply terminals if cables are not normally provided.

12.2 Test Procedure

1. Perform test system setup as section 5.1.3.
2. Set the voltage of the DC Power Supply to normal supply voltage (here used 3.7V) and the temperature of the Temperature Chamber to vary from -30°C to +50°C at intervals of 10°C.
3. At each temperature level, the EUT is powered off and kept in the Temperature Chamber for two hours. 4. After sufficient stabilization, turn on the EUT, command it via the System Simulator (SS) to operate at the maximum output power i.e. Power Control Level (PCL) = 0 and Power Class = 1, and then establish a communication link between the EUT and the SS.
5. The low, middle and the high channels are selected to perform tests respectively. Set the TCH number to 128 as the low channel.
6. The frequency deviation is measured (directly read from the SS, which can report the parameter) within three minutes.
7. Set the TCH number to 190 as the middle channel, then repeat step 5.
8. Set the TCH number to 251 as the high channel, then repeat step 5.
9. Adjust the temperature of the Temperature Chamber as specified in step 2, then repeat step 3 to 7.
10. Set the voltage of the DC Power Supply to high extreme supply voltage (here used 4.2V) and the temperature of the Temperature Chamber to normal (here used +22°C), then repeat step 3 to 8.
11. Set the voltage of the DC Power Supply to low extreme supply voltage (here used 3.6V) and the temperature of the Temperature Chamber to normal (here used +22°C), then repeat step 3 to 8.

12.3 Test Result

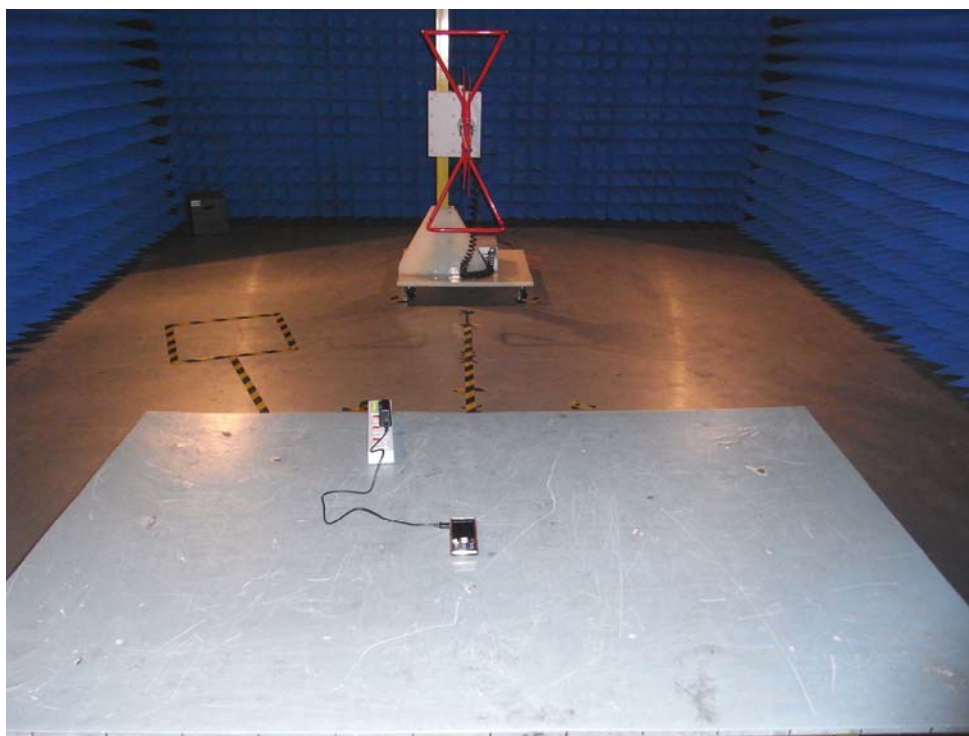
| No. | Test Conditions | | Frequency Deviation (Hz) at Channels Used | | | |
|--------------|-----------------|-------------|---|--------|--------|---|
| | Voltage | Temperature | 128 | 190 | 251 | Limit (±2.5ppm) |
| 1 | V-nor | -30°C | -52.15 | -48.56 | -49.93 | (a) ±2060Hz for 128 Channel (b) ±2096Hz for 190 Channel (c) ±3055Hz for 251 Channel |
| 2 | | -20°C | -45.21 | -42.64 | -44.26 | |
| 3 | | -10°C | -39.13 | -38.35 | -39.58 | |
| 4 | | 0°C | -35.36 | -34.45 | -35.22 | |
| 5 | | +10°C | 25.85 | -20.08 | -25.75 | |
| 6 | | +20°C | -29.32 | -28.58 | -21.42 | |
| 7 | | +30°C | -30.24 | -32.82 | -31.18 | |
| 8 | | +40°C | -38.26 | -35.66 | -35.25 | |
| 9 | | +50°C | -44.53 | -39.29 | -40.32 | |
| 10 | V-high | +22°C | -35.11 | -33.78 | -34.46 | |
| 11 | V-low | +22°C | -34.68 | -35.35 | -36.52 | |
| Result: PASS | | | | | | |

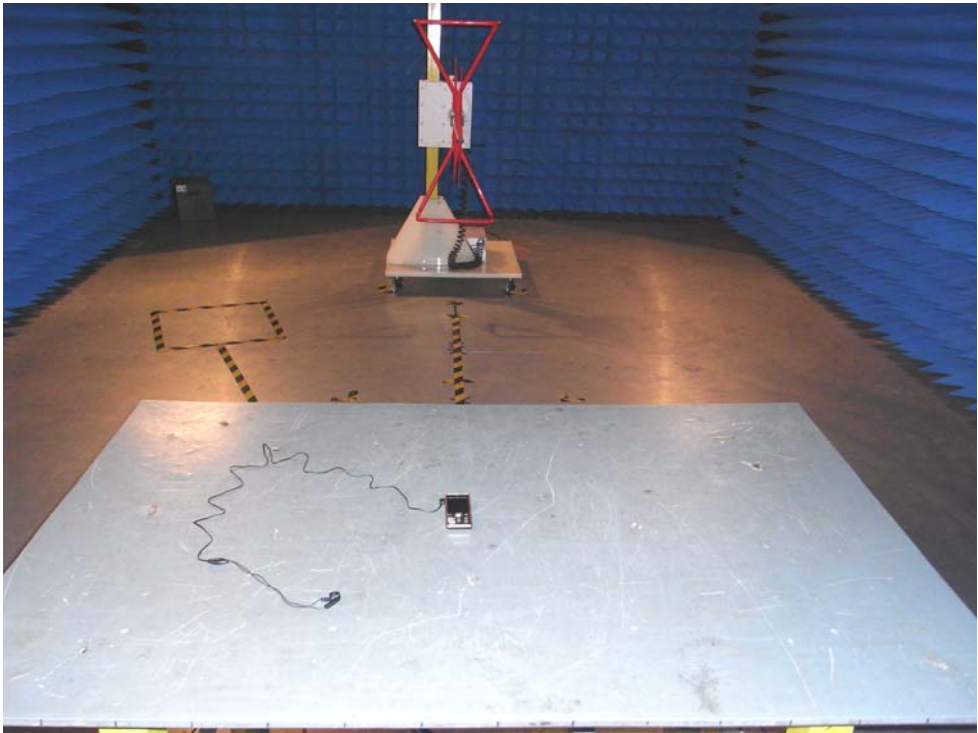
APPENDIX 1
PHOTOGRAPHS OF TEST SETUP

CONDUCTED TEST SETUP



RADIATED EMISSION TEST SETUP





APPENDIX 2 PHOTOGRAPHS OF EUT

FRONT VIEW OF SAMPLE



BACK VIEW OF SAMPLE



LEFT VIEW OF SAMPLE



RIGHT VIEW OF SAMPLE



TOP VIEW OF SAMPLE



BOTTOM VIEW OF SAMPLE



PHOTO OF POWER SUPPLY



PHOTO OF USB CABLE



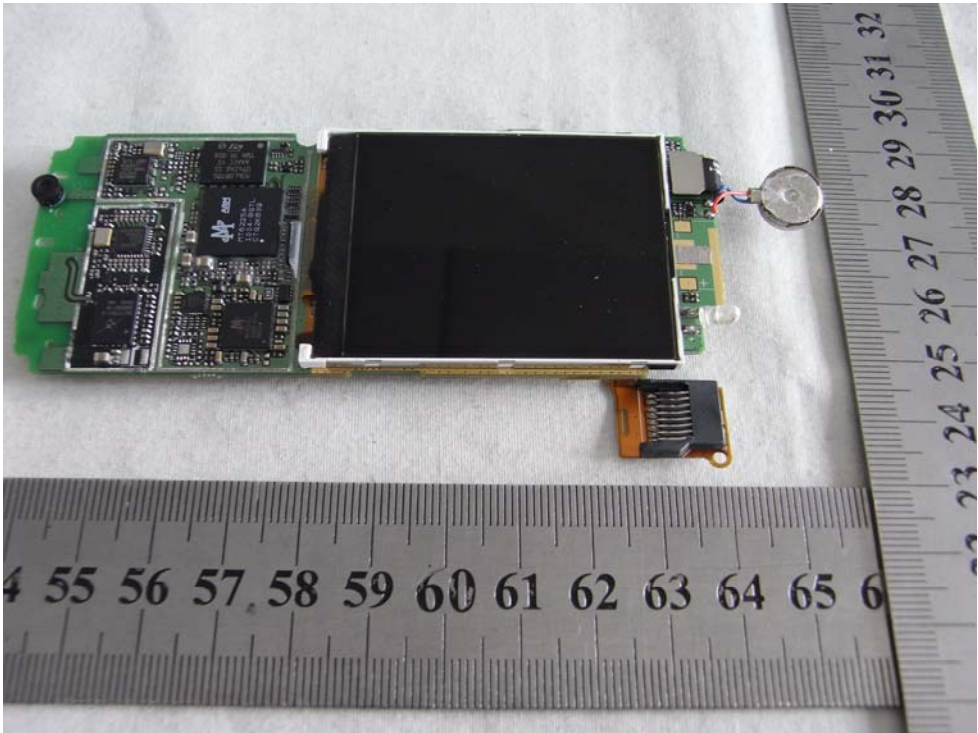
PHOTO OF BATTERY



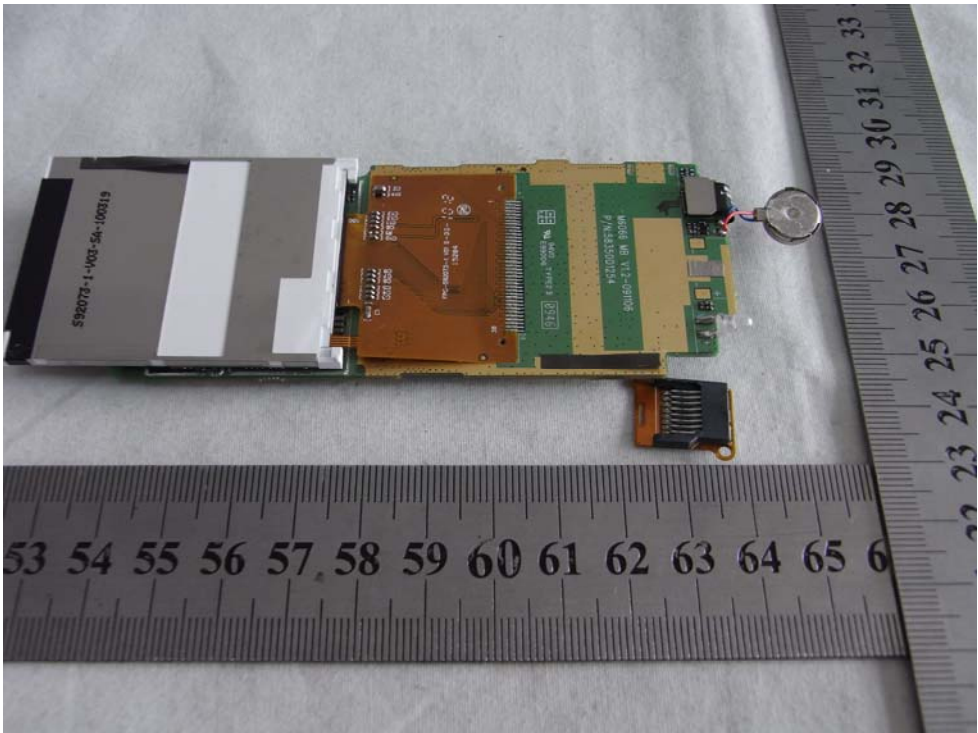
PHOTO OF THE ENTIRE SAMPLE



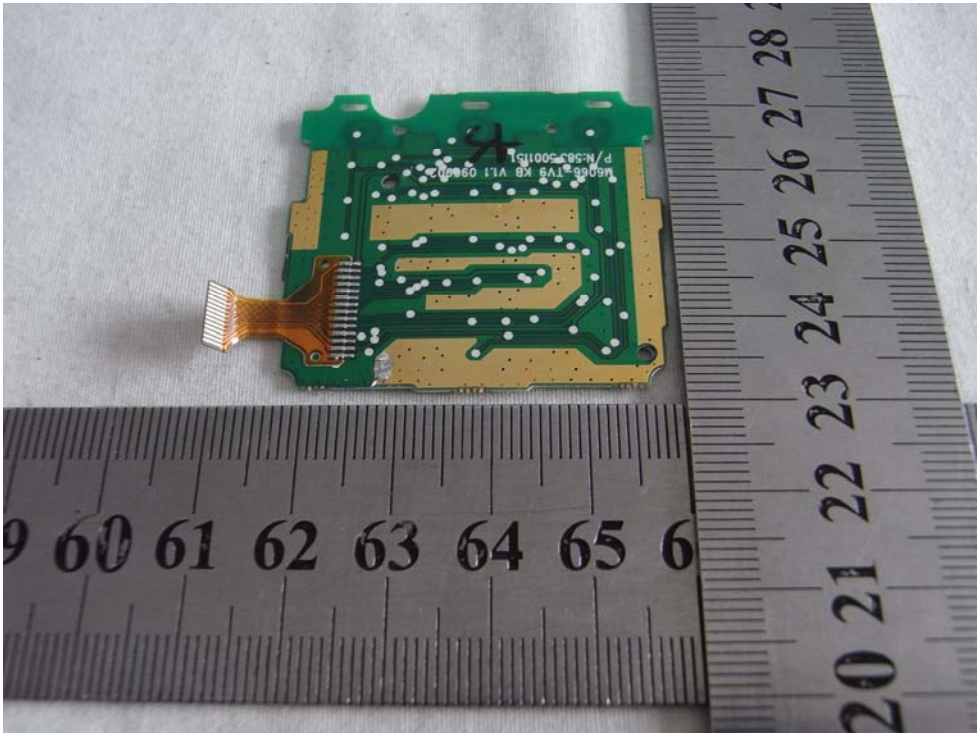
INTERNAL PHOTO OF SAMPLE – 1



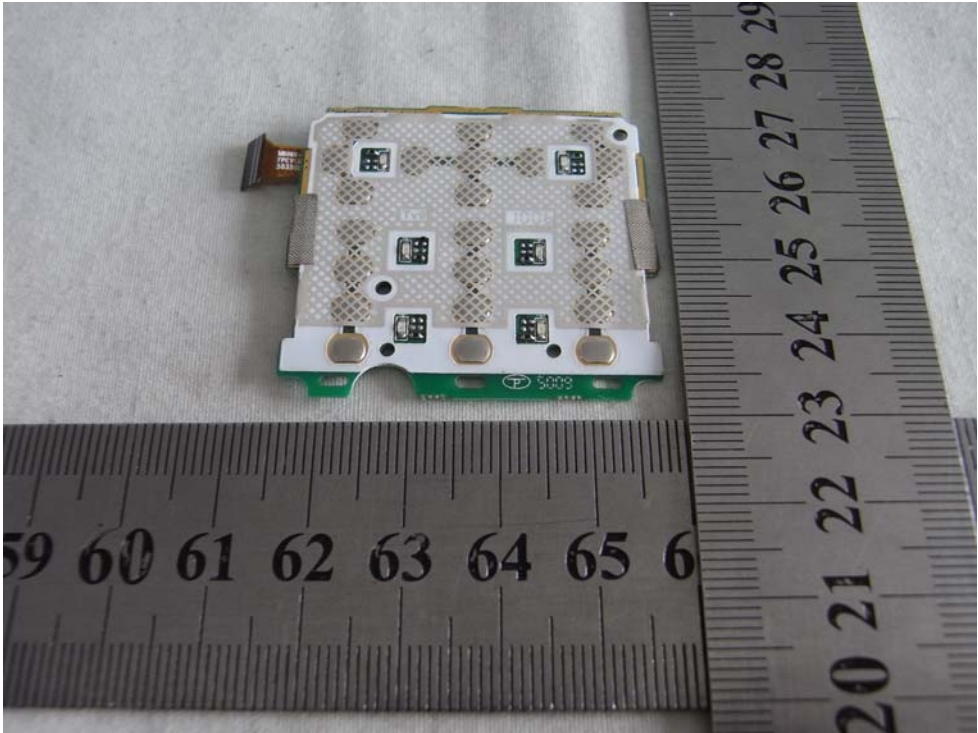
INTERNAL PHOTO OF SAMPLE –2



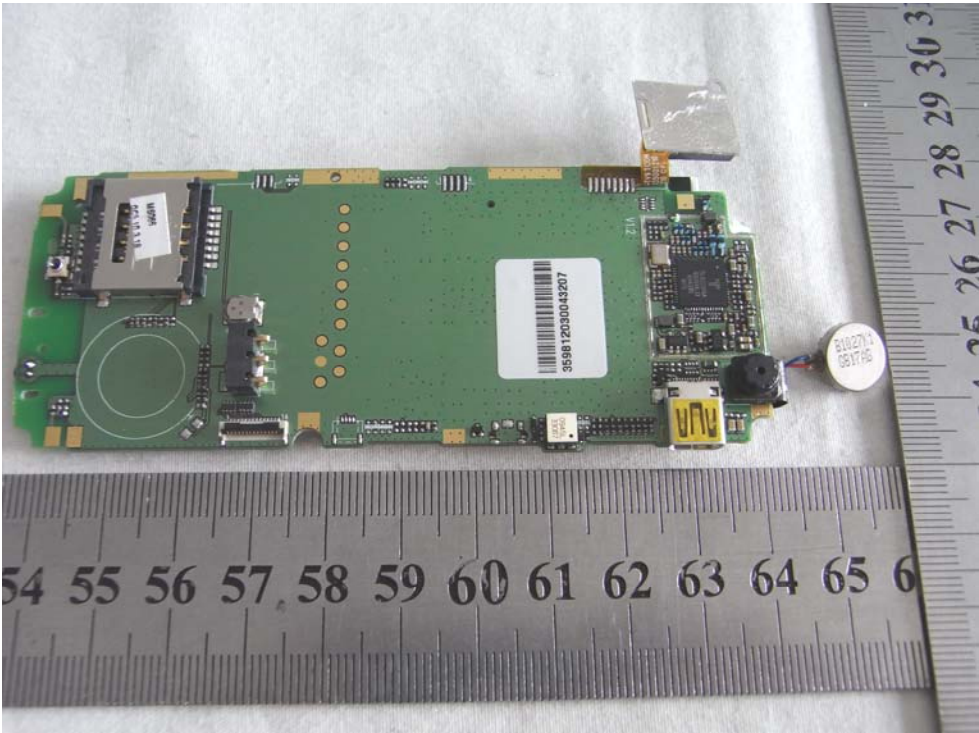
INTERNAL PHOTO OF SAMPLE –3



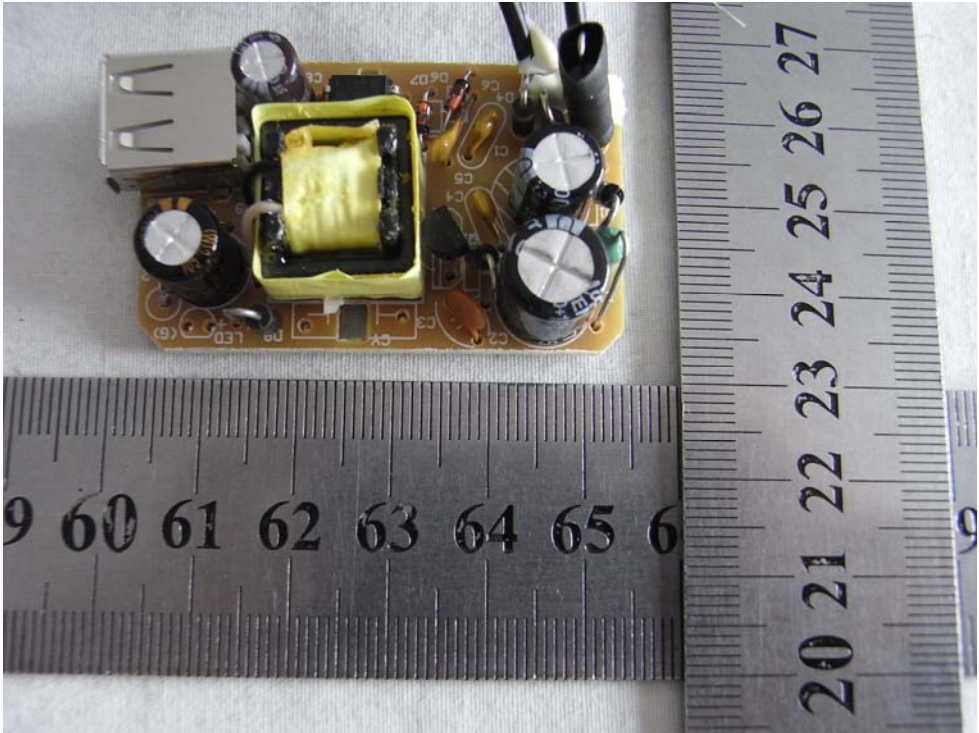
INTERNAL PHOTO OF SAMPLE –4



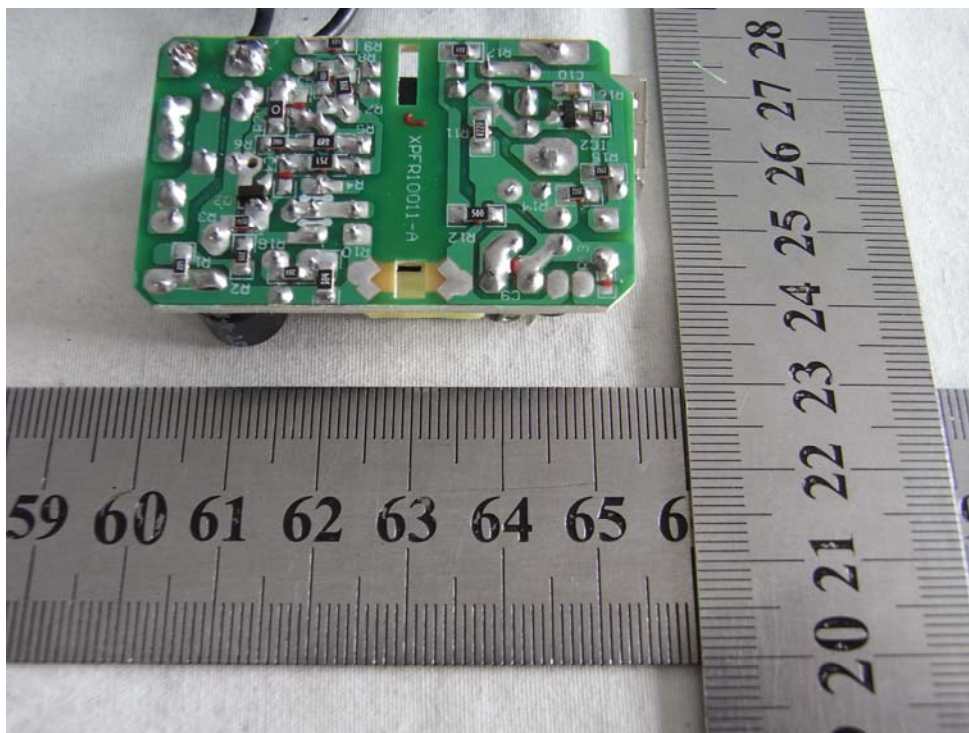
INTERNAL PHOTO OF SAMPLE – 5



INTERNAL PHOTO OF POWER SUPPLY-1



INTERNAL PHOTO OF POWER SUPPLY-2



-----END OF REPORT-----