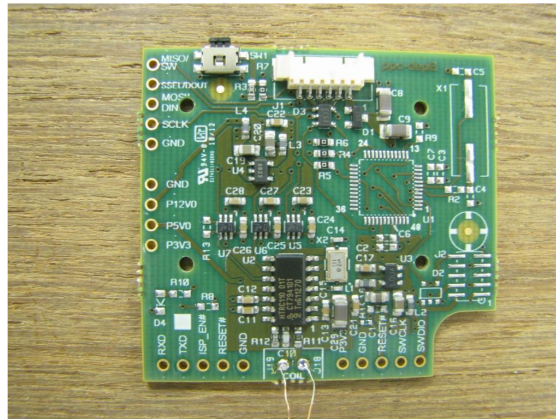


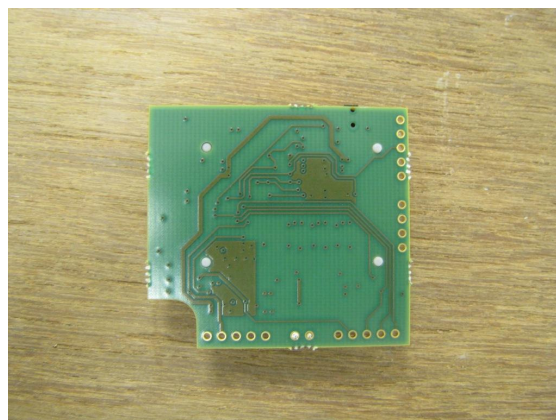
INTERNAL PHOTOGRAPHS



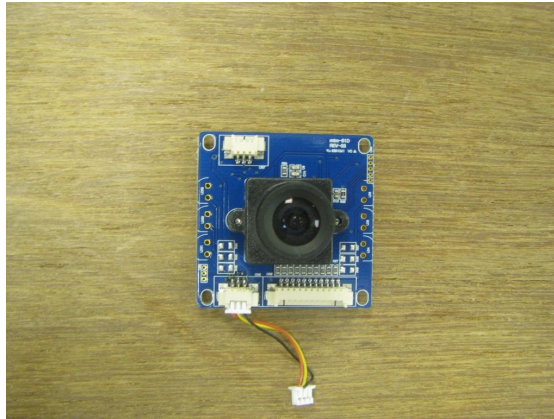
Reader module with antenna coil former



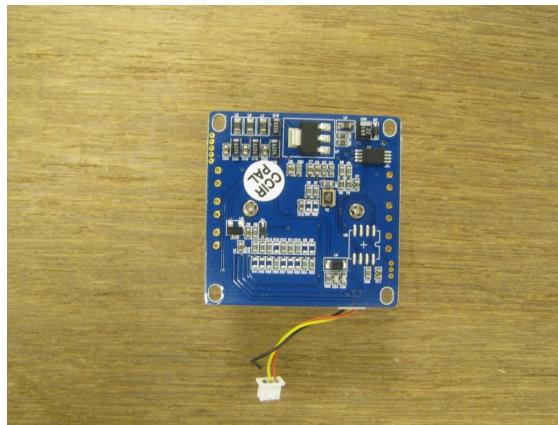
Reader module - top view



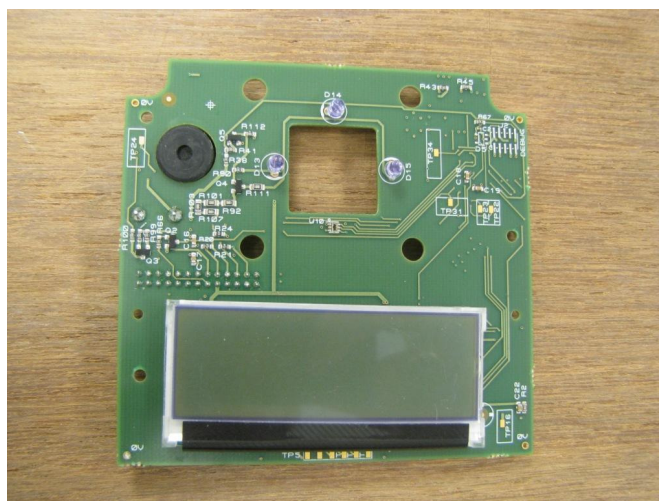
Reader module – bottom view



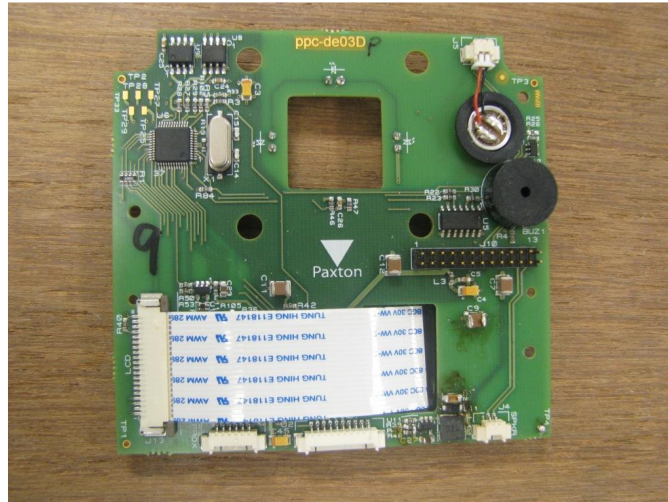
Camera – top view



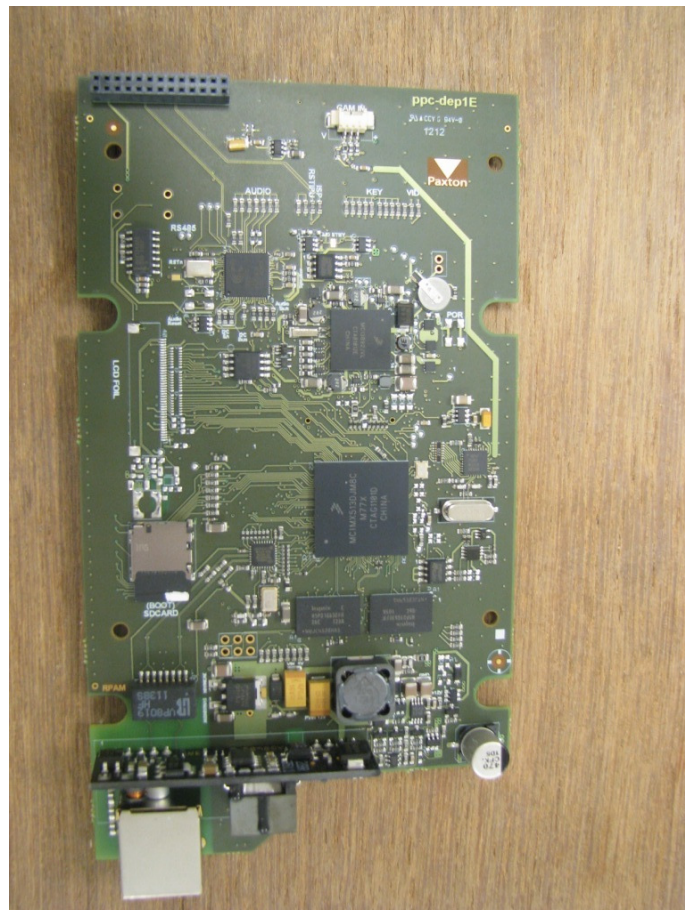
Camera – bottom view



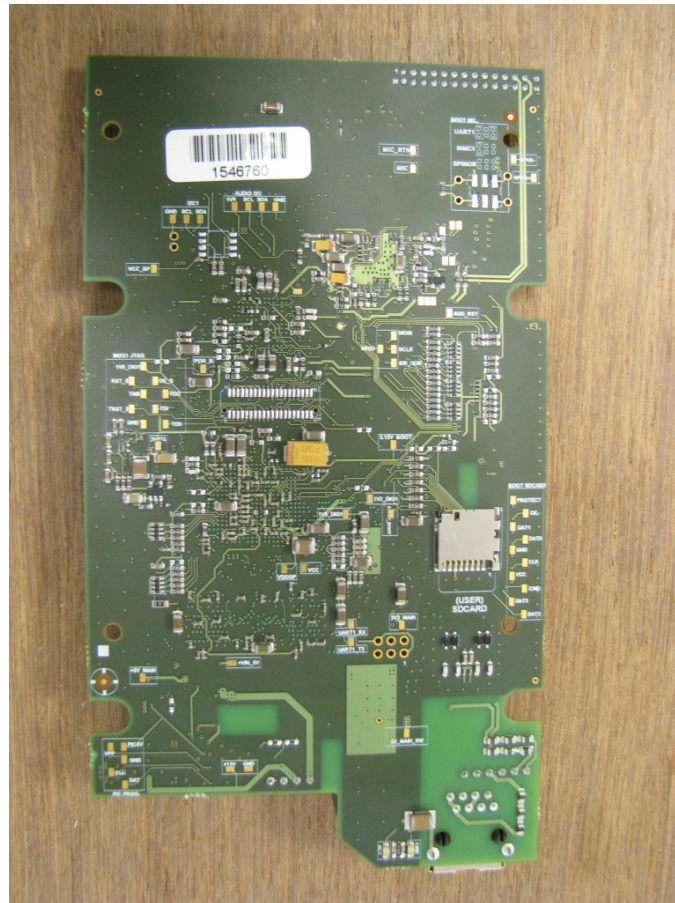
LCD driver board – top view



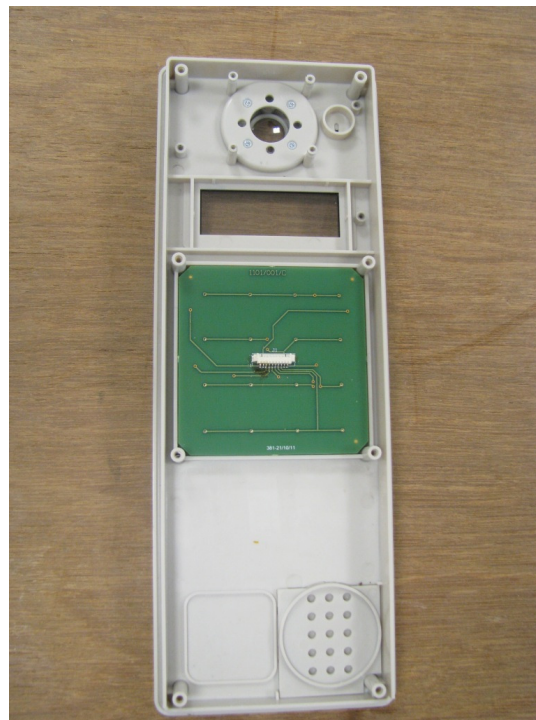
LCD driver board – bottom view



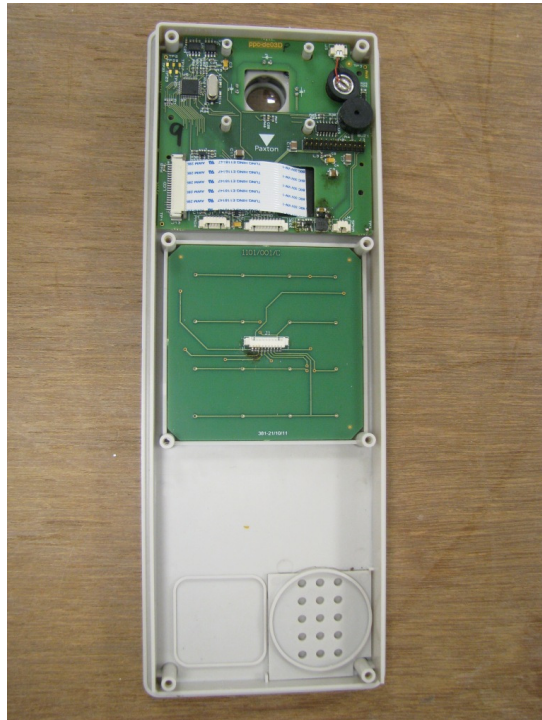
Main Panel CPU board – top view



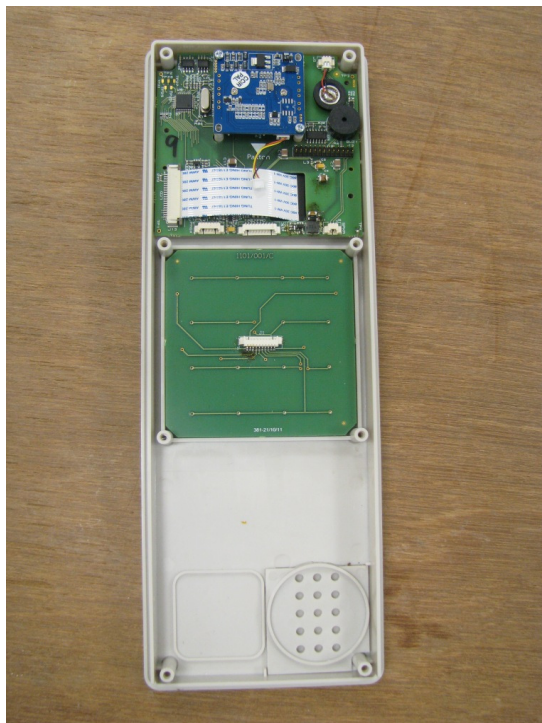
Main Panel CPU board – bottom view



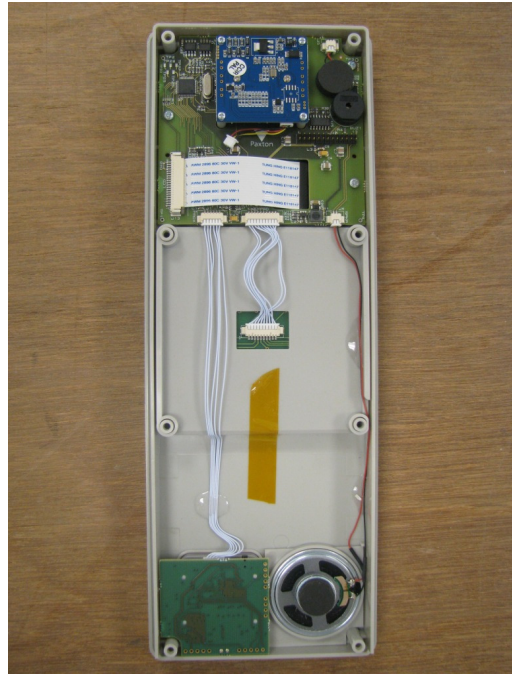
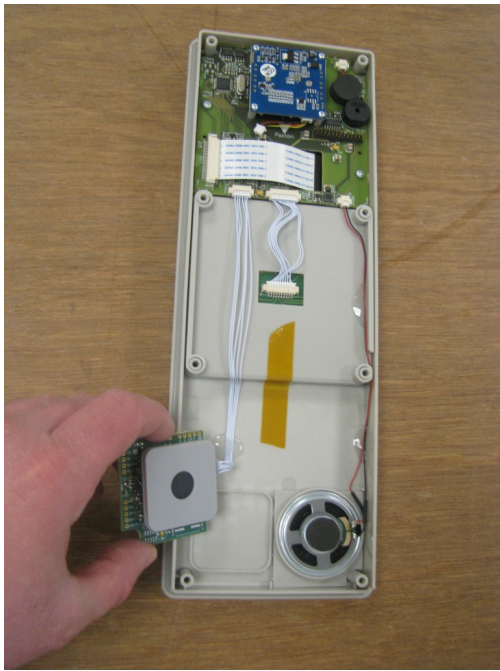
Front housing with keypad PCB



Front housing with LCD driver board and keypad PCB



Front housing with LCD driver board, keypad PCB and camera



Panel main sub-assembly showing reader module, keypad and speaker connections



Full assembly with back housing removed