

QuickStart DictaMike

1. Insert the Transceiver Adapter (dongle) in a USB port on PC
2. Set the volume for the 'USB Headset' Sound recording to about 70% in the Windows Control Panel - Sounds and Audio devices
3. Switch on the DictaMike (press On/Off button for 3 seconds)
4. Start DictaNet Workflow (or Compact) Recorder software on the PC
5. Under Options, select "DictaMike" as Hand-held mike on the Hardware tab and "USB Headset" as Voice input/output device on the Recorder tab.
6. Start dictating with the REC button on the device.



Power LEDs

Green flashes brightly: Device looking for connection.
 Green flashes softly: Device is on and in standby.
 Green lights: Device is active.
 Red lights: Battery needs recharging.
 Red flashes: Battery is recharging.

Microphone

Record button / new dictation

Pressing REC starts a new recording, or pauses/continues a recording.

Status LED

LED off: A new dictation can be started, or an opened dictation is in Pause mode.
 LED red: Recording running.
 LED orange: Insert recording.

Loudspeaker

The volume can be set in the Recorder software and Windows Control Panel.

Recharge connection

Either with the supplied USB cable or with a separately-supplied AC adapter.

Save button

Press once: Save menu opens (double beep).
 Press twice: Dictation is saved (triple beep).

Fast-forward/Rewind, Play

Up: Fast-forward (FF)
 Press in: Play/Stop
 Down: Rewind

STOP button

Stops the recording (final save is with Save button!).

Insert button (INS)

Rewind/FF to the position where you want to insert. Pressing the INS button starts the insert recording. Pressing the STOP button ends the insert recording. (over-write mode is active again!)

Switch On/Off

To switch on or off, press and hold the button for 3 seconds (device will switch itself off after 10 minutes inactivity).



Transceiver Adapter (dongle)

Installation guide for DictaMike

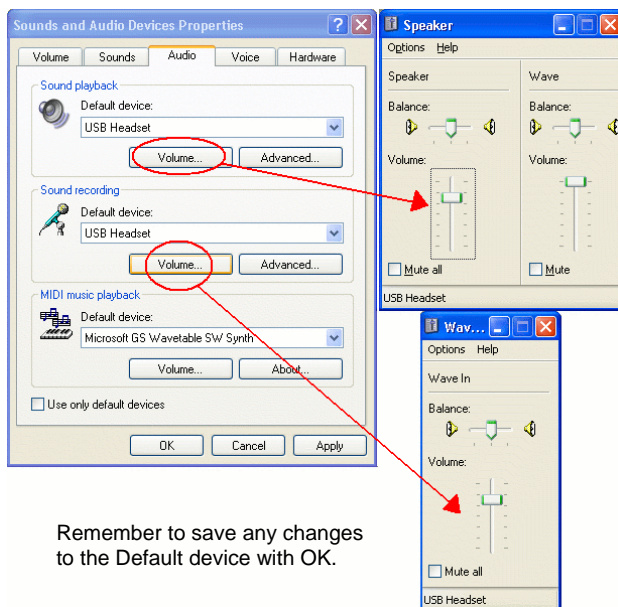
1. Intended use

The DictaMike is a wireless, PC dictation microphone based on 2.4GHz radio transmission. It can only be used with the approved software (e.g. DictaNet Workflow or DictaNet Compact from November 2006).

2. Installation

No separate driver software is needed to install DictaMike! It only needs to have the Transceiver Adapter (dongle) inserted into an available USB port on the PC, and then Windows will find the correct plug&play drivers automatically.

Check the Windows Control Panel - Sounds and Audio devices settings. Set the 'Wave In' volume level for the 'USB Headset' Sound recording microphone to about 75% using the slider.



We also recommend setting the Sound playback for 'USB Headset' to 100% for 'Wave' and 75% for 'Speaker'.

Then select DictaMike as Hand-held mike on the Hardware tab and "USB-Headset" as Voice input/output device on the Recorder tab under Options in the Workflow Recorder software on the PC.

Please see the corresponding Help information provided within the Recorder software for more details.

3. Energy saving and standby mode

When you press a button on the DictaMike, then the device is active (power LED lights green). After 10 seconds without any button pressing and no audio is recording/playing, the device switches to standby mode (power LED flashes green softly) but is immediately active again when a button is pressed.

After 10 minutes of no activity, DictaMike turns itself completely off in order to save battery life. You must then press and hold the On/Off button for 3 seconds to start back into active mode.

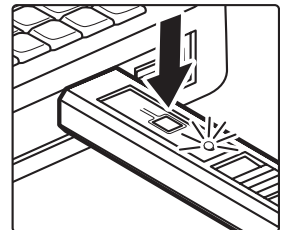
4. DictaMike connection to Adapter (pairing)

The DictaMike only works with the dedicated Transceiver Adapter assigned to it. Therefore several DictaMikes can be used in the same environment. If the DictaMike cannot find a connection to the Adapter (green Power LED flashes brightly and it double-beeps every 15 seconds), please check the following:

- Is the Adapter inserted in the PC's USB port?
- Is the PC switched on?
- Is the DictaMike within the range of the Adapter (indoors approx. 30m)?

If, however, a connection is still not shown, you must re-connect DictaMike and the Adapter again:

- Insert the Adapter in an unused USB port on the switched-on PC.
- Switch on the DictaMike and hold within approx. 10cm of the Adapter.
- Press and release the small, square button on the Adapter.
- Wait about 10 seconds.



5. Charging the battery

Charging the Lithium-Polymer battery in DictaMike is performed using the supplied USB cable, attached to the switched-on PC. The red Power LED flashes while the device is charging. When the DictaMike is fully charged, the red LED is turned off. Alternatively, the separately-supplied AC adapter can be used.

If the battery falls noticeably short of the quoted dictation time, then it must be replaced. Only original, DictaMike rechargeable batteries are permitted, which are available from DictaNet Software AG.

6. Technical data

Technology	2.4GHz radio technology
Range	Up to 30m indoors
Power supply	Lithium-Polymer rechargeable battery 3.7V, 700mAh
Recharge time	approx. 2.5 hours
Dictation time	Up to 15 hours
Operating systems	Win 98SE, Win 2000, Win XP
Supported dictation software	DictaNet Workflow (or Compact) Recorder from November 2006
Dimensions	130 x 42 x 20.5 mm (HxWxD)
Weight	58g (without Adapter)

Subject to alterations of technology or design.

7. Disused devices/ battery disposal

The DictaMike is not allowed to be disposed of in domestic or communal waste. Please make sure that the disposal satisfies local laws and regulations, or send the device back to DictaNet Software AG.

Similarly, the rechargeable battery is not allowed to be disposed of in domestic waste. It can be deposited at a battery collection point at a dealer.

Federal Communication Commission Interference Statement

This equipment has been tested and found to comply with the limits for a Class B digital device, pursuant to Part 15 of the FCC Rules. These limits are designed to provide reasonable protection against harmful interference in a residential installation. This equipment generates, uses and can radiate radio frequency energy and, if not installed and used in accordance with the instructions, may cause harmful interference to radio communications. However, there is no guarantee that interference will not occur in a particular installation. If this equipment does cause harmful interference to radio or television reception, which can be determined by turning the equipment off and on, the user is encouraged to try to correct the interference by one of the following measures:

- Reorient or relocate the receiving antenna.
- Increase the separation between the equipment and receiver.
- Connect the equipment into an outlet on a circuit different from that to which the receiver is connected.
- Consult the dealer or an experienced radio/TV technician for help.

FCC Caution: Any changes or modifications not expressly approved by the party responsible for compliance could void the user's authority to operate this equipment. This transmitter must not be co-located or operating in conjunction with any other antenna or transmitter.

This device complies with Part 15 of the FCC Rules. Operation is subject to the following two conditions: (1) This device may not cause harmful interference, and (2) this device must accept any interference received, including interference that may cause undesired operation.