

# A-Tag

## Models

**T11-122 – Status  
&  
T21-122 – Non Status  
RTLS Tags**

### *Installation Instructions*



**RadarFind™ Corporation  
877-RadarFind (723-2734)  
[www.radarfind.com](http://www.radarfind.com)**



**Warnings:**

**It is important to follow all instructions shipped with this product.**

**UNPACKING:** After unpacking the unit, examine it for damage that may have occurred in transit. If the equipment has been damaged, do not attempt to install or operate it. File a claim immediately with the carrier stating the extent of the damage, or contact RadarFind customer service for repair or replacement.

**Read and understand all instructions before installing or operating this equipment.**

The selection of the mounting location for the device is to be accomplished under the direction of the director of Clinical Engineering and conform to all company policies, and must be in accordance with specifications in the sub-chapter for each device type.

**CAUTION:** Risk of malfunction. Install these devices only in areas with an ambient temperature between 0° and 50°C.

[15.19] This device complies with Part 15 of the FCC Rules. Operation is subject to the following two conditions: (1) this device may not cause harmful interference, and (2) this device must accept any interference received, including interference that may cause undesired operation.

[15.21] Information to user: Changes or modifications not expressly approved by the RadarFind Corporation could void the user's authority to operate the equipment

[15.105] NOTE: This equipment has been tested and found to comply with the limits for a Class A digital device, pursuant to Part 15 of the FCC Rules. These limits are designed to provide reasonable protection against harmful interference when the equipment is operated in a commercial environment. This equipment generates, uses, and can radiate radio frequency energy and, if not installed and used in accordance with the instruction manual, may cause harmful interference to radio communications. Operation of this equipment in a residential area is likely to cause harmful interference in which case the user will be required to correct the interference at his own expense.

[15.249] This equipment operates under Section 15.249 of the Title 47 FCC Rules.

This product protected by one or more of the following U.S. Patents: 7372365, 7525432 & 7528716. Other patents pending.



## **Accessories**



### **A12-3T00 (2) Stainless steel mounting straps**

***(for application of Radarfind tag mounting base (Part# TBA-3160) to tubular structures)***

***Note: For best performance the steel straps require a special tool to tighten and cut the strap.***

## General Guidelines:

All tags on an asset type should be the same type, e.g. all infusion pumps should have an A-Status Type tag.

Select a standard location on each asset type for the tag. For A-Status tags select a location where the status indicator is plainly visible and can be easily accessed by the user when switching the status switch. Be sure to choose a place where the tag is protected from physical impacts when the device is being used or transported.

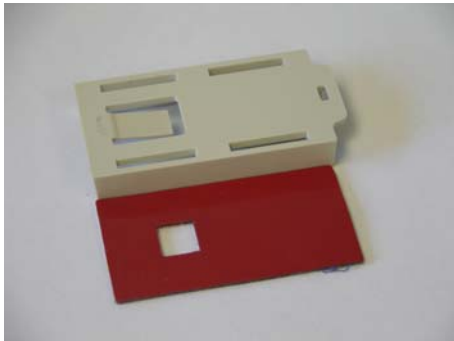


*Example Status tag placement*

The tag location should not interfere with normal use of the asset, and have sufficient clearance on the open end of the base to insert the locking base key and insert and remove the tag.

For best performance do not place the tag in a location covered with metal, such as inside of a control box or enclosed area under a bed frame.

**Using adhesive pad – Clean the area on the asset with alcohol to ensure a good bond. Remove white side of the adhesive covering and place on tag base, aligning the hole in the center of the adhesive over the base locking mechanism. Remove red backing and apply to asset. (Be sure to leave sufficient clearance at the open end of the base to insert and remove the tag from the base)**



*Adhesive Orientation*



*Apply adhesive to base 1st*

**Adhesive mounting tips for curved surfaces:**

**If the target location is not completely flat you may need to add strips under the ends of the adhesive pad (cut the strips from a spare pad)**



*Building up adhesive to conform to curved substrates*

## Auxiliary attachment:

Use a standard plastic “Tie-Rap” to attach the tag base to permanently mounted cords or handles of assets where there is no convenient flat mounting spot.



*Use tie-rap to attach tag to oddly shaped assets*

## Mounting to tubular fixtures:



*Use stainless steel straps to attach tag to tubes or poles.*

For best results mounting to tubular fixtures, such as IV poles or wheelchair frames, the locking base is equipped with strapping holes. These holes are designed to be used with thin stainless steel straps, available from Radarfind ( Part # A12-3T00 ) or Panduit:

[http://www.panduit.com/search/search\\_results.asp?Ne=1&recName=MLT1S%2DCP&N=5000001+336+3000858+&region=USA](http://www.panduit.com/search/search_results.asp?Ne=1&recName=MLT1S%2DCP&N=5000001+336+3000858+&region=USA)

***Note: that the best results are obtained by using the strapping gun designed for these steel straps.***

**Installation Steps – Attaching tags with adhesive:**

**Step # 1 - Select location for tag and clean area for adhesive with alcohol.**

**Step # 2 - Attach adhesive to tag base with adhesive or straps.**

**Step # 3 – (Assuming that you have already entered your assets - See next page for *ADDING assets in the RadarFind database.*) Select asset by entering the serial number or asset inventory number. Enter or scan tag ID into the Radarfind software, select which tag type, status or non-status, and hit <Tag!>**

hardware > assets


Asset Type:  Asset SubCategory:  ☐ Tagged Only ☒ Un-Tagged Only

**Delete selected** **Add an Asset** ASSETS

<input type="checkbox"/>	Name	Description	Type	Inventory(CE)Id	Manufacturer	Serial	Status	Type	Tag	Where	Actions
<input type="checkbox"/>	BED		General Bed	FNB2701		1130-62A30-A	<input type="radio"/> With Status <input type="radio"/> No Status		Tag!		EDIT

Once a tag is assigned to an asset any searching or display can be done by looking for the asset.

If you need to remove a tag from an asset please un-assign the asset in the following screen by selecting the correct asset and clicking DETACH.

  
**Because Where Matters**

▼User Interface | ▼Reporting | ▼Facility | ▼Hardware | ▼System |

hardware > assets

Asset Type:  Asset SubCategory:  ☐ Tagged Only ☐ Un-Tagged Only

**Delete selected** **Add an Asset** ASSETS

<input type="checkbox"/>	Name	Description	Type	Inventory(CE)Id	Manufacturer	Serial	Status	Type	Tag	Where	Actions
<input type="checkbox"/>	4100 PCA	INFUSION PUMP, PAT.-CTRL. ANALGESIC-16-924A	PCA Pump	02739	ABBOTT LABORATORIES DIAG DIV	21529	Available	AS1	00:00:00:03:10:00:02:e6	Radio	EDIT   Detach



### Run-Time Asset Additions or Edits

To edit a current asset locate the asset in the asset table and hit the edit icon.

To add a new asset to the database select Add an Asset from the menu bar.



Selecting either Edit or Add will bring you to the following asset edit screen where you can enter or edit details concerning the asset. The important lines are:

- 1 – Display Name - The Asset Name
- 2 – Inventory ID – Your property tag ID number - this number must be unique to all assets.
- 3 – Type – Select the appropriate asset sub-category from the drop down list.

*See Appendix A for more information on Asset Categories and Sub-Categories*

If you wish you can also scan a tag ID into the Tag field here as well as the list screen above.

**Please remember to select whether the tag is a STATUS or NON-STATUS tag.**

Edit Asset - 4100 PCA

Display Name:

4100 PCA

Description:

INFUSION PUMP, PAT.

Serial:

21529

Inventory ID:

02739

Class:

Manufacturer Id:

ABBOTT LABORATOR

Type:

PCA Pump

Tag:

00000003100002e6

A With Status

Clinical Zone:

3 East

Save Asset

Save And More

Cancel

The Clinical zone field indicates the department which “Owns” or is “Home” to the asset. At this time it is not used elsewhere in the RadarFind system.

**Technical Specifications:****Models T11-122 – Status & T21-122 – Non Status RTLS Tags**

DC power:	Internal sealed lithium battery
Power consumption:	Average 15uA
Communications	902-928 MHz FSK
Transmit Power	+10dBm maximum - <b>*nominal*</b> TX field level is 70dBµV/m @ 1m
Antenna:	Unity gain isotropic
Communications:	FCC Subpart 15.249
Operating:	5 to 35° C, 5% to 90% RH, non condensing
Packaging:	ABS Plastic (UL Flammability Rating V0)
Accessories:	Adhesive pad, holding base, plastic mounting straps, and steel mounting straps
Dimensions:	Optional holding base (2.6"L x 1.5"W x 0.375"D) Tag T11-122 (2.5" L x 1.25" W x 1" D) Tag T21-122 (2.5" L x 1.25" W x 7/8" D)

*Non-status FCC Label**Status FCC label***RadarFind Corporation™**

## Appendix A – Asset Type Categories

Organization of Assets into a logical structure of Categories is important to allow users to easily locate Assets they are searching for and get the most benefit from the RadarFind system.

Each RadarFind system contains a default Asset Type Category Tree database installed as an example of how Assets may be organized to make the system easy to use.

*Note: Assets imported from existing Asset management systems maintained by Biomed or Materials will be imported into Categories that match the original system. In order for general users to be able to locate items some alteration in the Asset naming conventions used by BioMed may be required.*

The Asset tree may be modified to suit specific requirements, within some general guidelines to assure proper functioning of the Asset search and utilization functions of the system.

### The Asset Tree View Screen

Assets: Asset Categories | Asset Categories/Assets Tree | Asset Pools

hardware > Asset Categories and Assets

Asset Categories [ ROOT ]

- Anesthesia Related or Respiratory
- Beds
- Blood Warmers [1]
- Cardiology Devices
- Computers/AV
- EKG/Defibrillation Devices [51]
- Feeding Pumps
- Heating/Cooling Devices [23]
- Infusion Pumps [490]
  - Blood Pump
  - Breast Pump
  - Multi-Channel
  - Peristaltic Pump
  - Pumps, Pressure Pad
  - Single IV Pump [1021]
    - Syringe Pump
    - Thermobac Drainage Pump
    - Triple IV Pump [82]
    - Volumetric Infusion Pump
  - Miscellaneous Equipment [3]
- M
- M
- OR Related
- PCA
- Portable Radiology
- PT Related
- radarfind tag [8]
- Rental Equipment [81]
- Respiratory Devices [53]
- Scales/Lifts [25]
- SCD/CPM Devices
- Telecommunications [2]

Assets ☐ Tagged Only ☐ Un-Tagged Only

Delete selected Add on Asset

Name	Type	Inventory(CE)Id	Serial	Status	Type	Tag	Around	Actions
<input type="checkbox"/> Single Infusion Pump	Single IV Pump	D08015	14124907CC	In Use	AS1	00:02:10:63	1PCH16	Detach ChangeTag
<input type="checkbox"/> Single Infusion Pump	Single IV Pump	D08065	14125183CC	In Use	AS1	00:02:20:06	5MT1F	Detach ChangeTag
<input type="checkbox"/> Single Infusion Pump	Single IV Pump	D08080	14124908CC	Dirty	AS1	00:02:07:06	3P46	Detach ChangeTag
<input type="checkbox"/> Single Infusion Pump	Single IV Pump	D08142	14125184CC	Dirty	AS1	00:02:03:85	6N54	Detach ChangeTag
<input type="checkbox"/> Single Infusion Pump	Single IV Pump	D08456	14124909CC	In Use	AS1	00:02:1C:91	2M31	Detach ChangeTag
<input type="checkbox"/> Single Infusion Pump	Single IV Pump	D08415	14125185CC	Ready	AS1	00:02:17:03	4P116	Detach ChangeTag
<input type="checkbox"/> Single Infusion Pump	Single IV Pump	D08172	14124910CC	Ready	AS1	00:02:1C:86	3PC01	Detach ChangeTag
<input type="checkbox"/> Single Infusion Pump	Single IV Pump	D08060	14125186CC	Ready	AS1	00:02:1C:02	CNPT01	Detach ChangeTag
<input type="checkbox"/> Single Infusion Pump	Single IV Pump	D08042	14124911CC	Dirty	AS1	00:02:1C:90	5N61	Detach ChangeTag
<input type="checkbox"/> Single Infusion Pump	Single IV Pump	D08128	14125189CC	Ready	AS1	00:02:21:27	1PCH17	Detach ChangeTag
<input type="checkbox"/> Single Infusion Pump	Single IV Pump	D08326	14125191CC	In Use	AS1	00:02:20:F6	2PC04	Detach ChangeTag
<input type="checkbox"/> Single Infusion Pump	Single IV Pump	D08427	14124914CC	In Use	AS1	00:02:10:54	1P108	Detach ChangeTag
<input type="checkbox"/> Single Infusion Pump	Single IV Pump	D08167	14125191CC	In Use	AS1	00:02:1C:CA	5N65	Detach ChangeTag
<input type="checkbox"/> Single Infusion Pump	Single IV Pump	D08472	14124917CC	In Use	AS1	00:02:20:6C	4M14	Detach ChangeTag
<input type="checkbox"/> Single Infusion Pump	Single IV Pump	D08218	14125193CC	Non Status	AS1	00:02:1D:90	8MEP12	Detach ChangeTag

Found 487 results. Showing items 1 to 20  
1 2 3 4 5 6 7 8 9 10 next set >>

Items / page: 20 change

RadarFind Corporation 2008

#### Asset Category Tree Basic Guidelines:

- 1 – The tree is two levels deep, a Major Category and a Sub-Category.
- 2 – An Asset Sub-Category must be assigned to a Major Category.
- 3 - Individual Assets **may only be assigned to an Asset Sub-Category**, not to a Major Category
- 4 - Asset Sub-Categories may be moved to other Major Categories by simply selecting another "Parent" in the dropdown box at the bottom of the Edit screen.
- 5 – Assets may be tagged directly on the Asset Category screen if desired.

## Important Controls in the Asset Tree View screen

The screenshot displays the 'Assets, Asset Categories, Asset Categories/Assets Tree, Asset Pools' interface. The left pane shows a hierarchical tree of asset categories, with 'Single IV Pump [407]' selected under 'Infusion Pumps [490]'. The right pane shows the 'Edit Asset Category - Single IV Pump' form. Annotations with arrows point to specific controls:

- Edit Icon:** Points to the edit icon (pencil) next to 'Single IV Pump [407]' in the tree.
- Add an Asset Icon:** Points to the plus icon (+) next to 'Single IV Pump [407]' in the tree.
- Add Sub-Category Icon:** Points to the plus icon (+) next to 'Infusion Pumps [490]' in the tree.
- Turn on Category in Views:** Points to the 'Active' checkbox in the 'Edit Asset Category' form, which is checked.
- Assign Sub to Major Here:** Points to the 'Parent' dropdown menu in the 'Edit Asset Category' form, which is set to 'Infusion Pumps'.

The 'Edit Asset Category - Single IV Pump' form includes the following fields:

- Name: Single IV Pump
- Description: Single Channel Infusion Pump
- Fast Access Code: [Empty]
- Max accepted utilization (%): 100.0
- Active: ☒
- MapView Viewable: ☒
- QuickView Viewable: ☒
- QuickViewCS Viewable: ☒
- TransportView Viewable: ☒
- Synonyms: [Empty]
- Separate by T: [Empty]
- Parent: Infusion Pumps

Buttons at the bottom of the form: 'Save asset type', 'Save And Merge', 'Cancel'.

RadarFind Corporation 2009