

Dual-Band Selective Repeater User's Manual

Longent

2112 Duskywing Drive

Raleigh, NC 27613

Office: 919.845.1007

Fax: 919.882.9551

Email: support@longent.com

www.longent.com

Contents

Contents	2
1. Introduction.....	3
1.1. Product Features.....	4
1.2. Front View.....	5
1.3. Bottom View	5
2. Specification	6
2.1. RF Specifications	6
2.2. Electrical Specifications	6
2.3. Mechanical Specifications	6
2.4. Environmental Specifications	7
2.5. Monitor and Control.....	7
3. Functional Description.....	8
3.1. Block Diagram	8
3.2. Unit Descriptions	10
4. Installation.....	11
4.1. Mounting.....	11
4.2. Connection	12
5. Operation and Maintenance	13
5.1. WEB Interface.....	13
5.1.1. Introduction.....	13
5.1.2. Hardware and Software Requirements.....	13
5.1.3. Environment Configuration.....	14
5.1.4. Basic Operation of WEB Interface.....	18
5.2. Keypad Interface	24

1. Introduction

Repeaters are used to fill out uncovered areas in cellular mobile systems, such as base station fringe areas, road tunnels, business and industrial buildings, etc.

A repeater receives signals from a base station, amplifies and retransmits the signals to mobile stations. Also it receives, amplifies and retransmits signals in the opposite direction. Both directions are served simultaneously.

To be able to receive and transmit signals in both directions, the repeater is connected to a donor antenna directed towards the base station and to a service antenna directed towards the area to be covered.

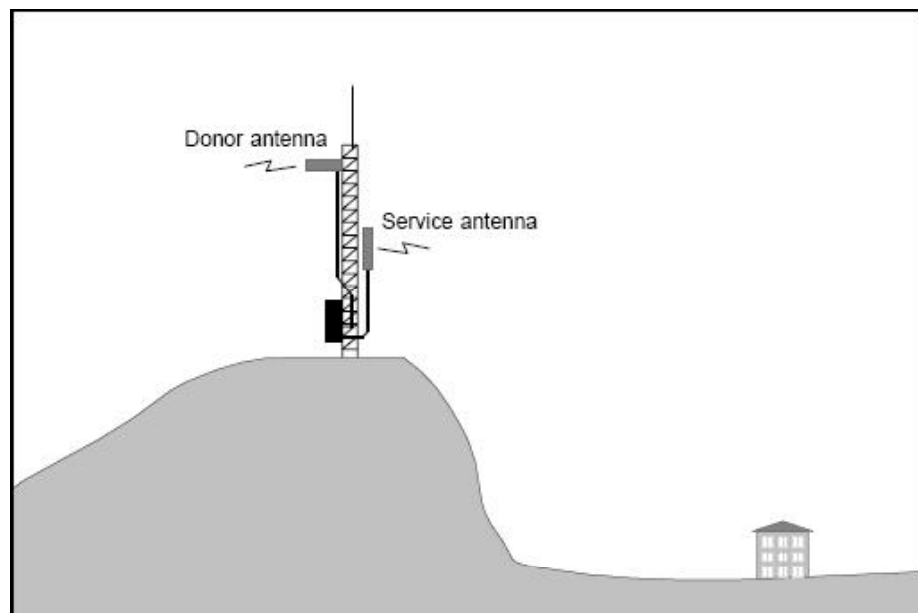


Figure 1 Outdoor Application

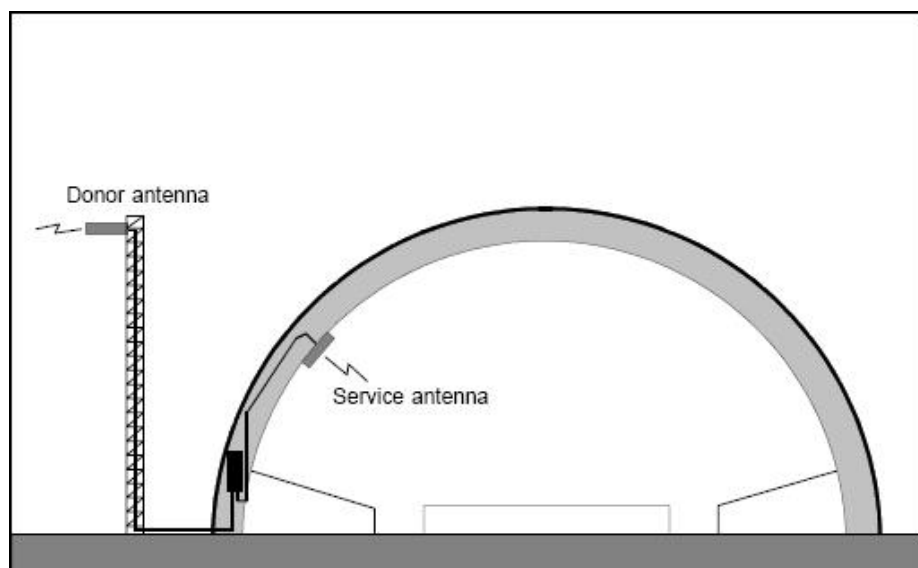


Figure 2 Indoor Application

Longent dual-band selective repeaters with 2 adjustable bandwidths have filters that can be set to various bandwidths. This repeater type is suitable for the most carriers that need 2 band blocks support in 800 MHz cellular band.

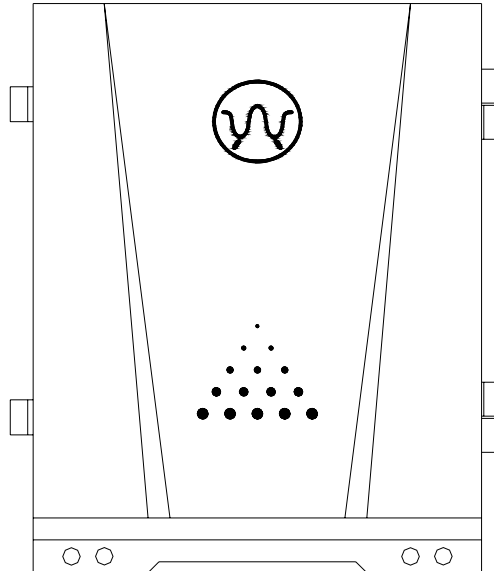


Figure 3 Longent Repeater

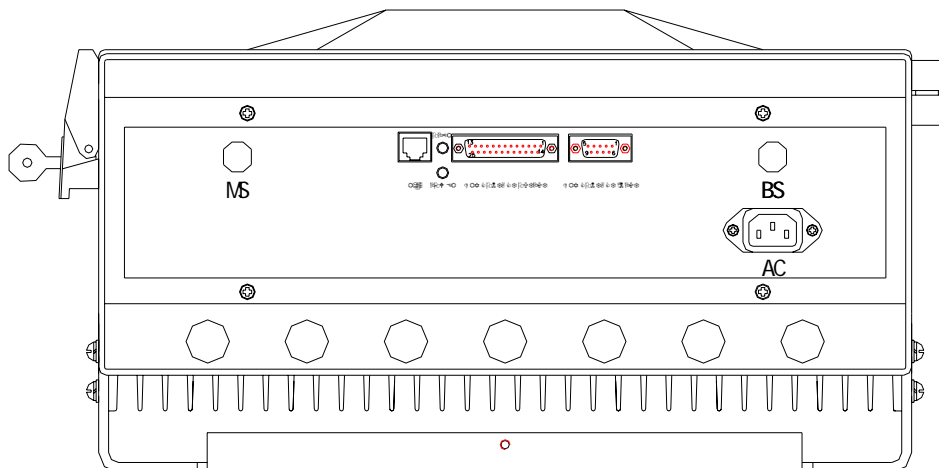
1.1. Product Features

- Full Block A + A* or Block B + B* support
- 2 programmable bandwidth, 0.5 MHz to 20 MHz for each
- RF output power in user definable, 30 dBm max.
- Web interface for monitoring and control
- Integrated RF module

1.2. Front View



1.3. Bottom View



2. Specification

2.1. RF Specifications

- Frequency Band 824 – 849 MHz, Uplink (Reverse Link)
869 – 894 MHz, Downlink (Forward Link)
- Number of Bands 2
- Bandwidth 0.5 – 20 MHz, Programmable
- Gain Adjustment Range 55 – 85 dB (1 dB Steps)
- ALC > 30 dB
- Absolute Group Delay < 10 μ s (8 μ s Typical)
- Output Power +30 dBm, Total

- Maximum Input Power (Non-destructive) +13 dBm
- Out of Band Spurious Emission -30 dBm, max.
- Selectivity < -20 dB @ +/-500 kHz out of band
< -30 dB @ +/-700 kHz out of band
< -50 dB @ +/-1 MHz out of band

- Pass Band Ripple 6 dB
(Typical 3 dB @ +/-1 MHz departure from the edge within the selected band)

- Noise Figure at Max Gain 5 dB
- VSWR < 1.5 : 1

2.2. Electrical Specifications

- Power Supply Voltage (default) 115 V AC
- Power Consumption, max 200 W
- DC Output of PSU 27 V, 12 V

2.3. Mechanical Specifications

- Dimensions (W×H×D) 410 mm × 520 mm × 234 mm
- Weight 23 kg
- RF Connector N-type female
- Signal Connectors RJ45 Modular Jack
DB25 female for 8 dry contact output
DB9 female for 6 dry contact input

2.4. Environmental Specifications

- Temperature Range -25 to +55 °C
- Humidity 95%, Relative
- Casing Class IP53

2.5. Monitor and Control

Monitor

- Output Power
- ALC Attenuation
- DGC Attenuation
- PA Enable
- PA temperature
- VSWR
- Band Setting
- Used Gain

Control

- ALC level
- DGC Attenuation
- PA Enable
- Band Setting

Alarm

- PA fault
- High Temperature
- Overpower
- Synthesizer Fault (unlock)
- PSU (Power Supply Unit) fault
- Self-oscillation
- VSWR Alarm
- Door Open Alarm
- External Alarm 1 ~ 6

3. Functional Description

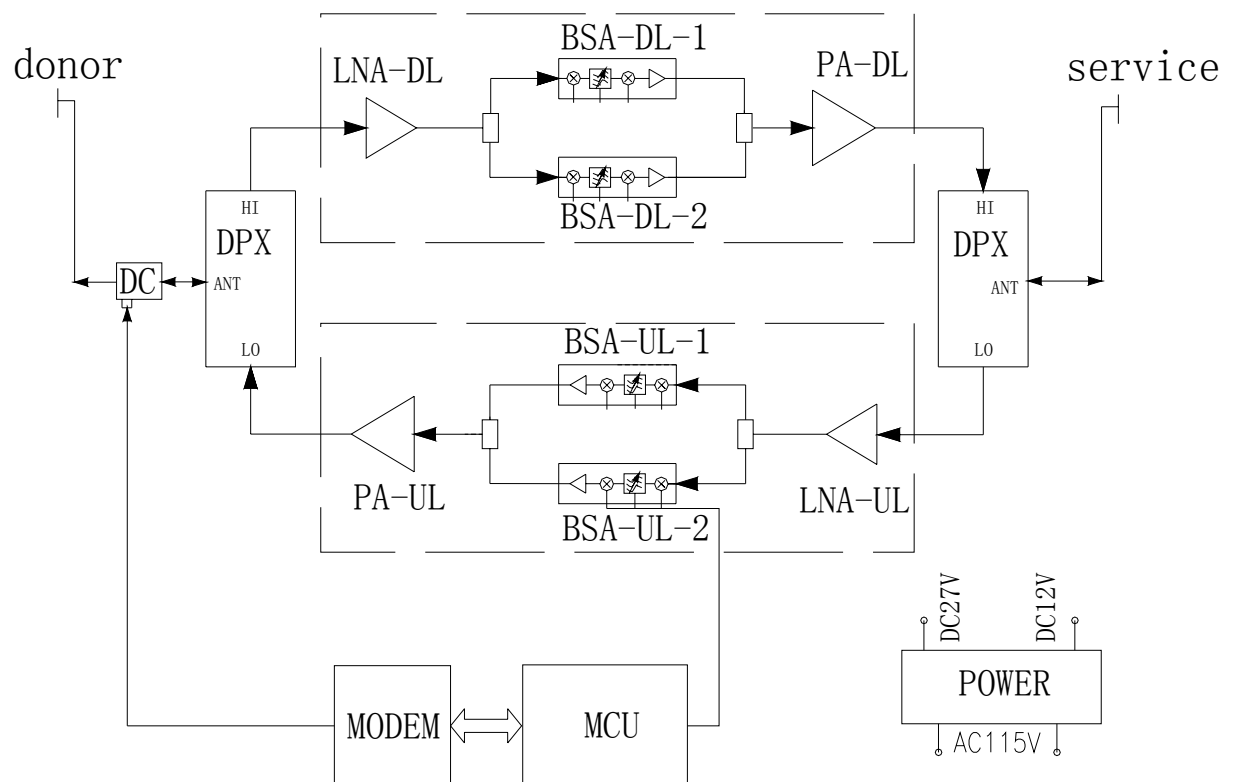
Longent repeaters work as bi-directional on-frequency amplifiers. A repeater receives, amplifies, and retransmits signals downlink and uplink simultaneously, i.e. from the base station via the repeater to the mobile stations and from the mobile stations via the repeater to the base station.

The repeater is connected to a BS antenna, directed towards the base station, and to a MS antenna directed towards the area to be covered. These antennas are connected to the repeater with N type male connectors.

Operational and power LEDs are visible on the repeater bottom.
The repeater works with convection cooling without fan.

Operational parameters such as gain (DGC attenuation), bandwidth, ALC levels, etc. are set using a notebook or keypad locally or remotely via modem with a data interface to the repeater control unit.

3.1. Block Diagram



The signal from the base station is received via the repeater donor (BS) antenna and is then forwarded through a directional coupler (DC). The signal passes a duplex filter (DPX), is amplified in a low noise amplifier (LNA), and enters the band selective amplifier (BSA), which has two parallel bands.

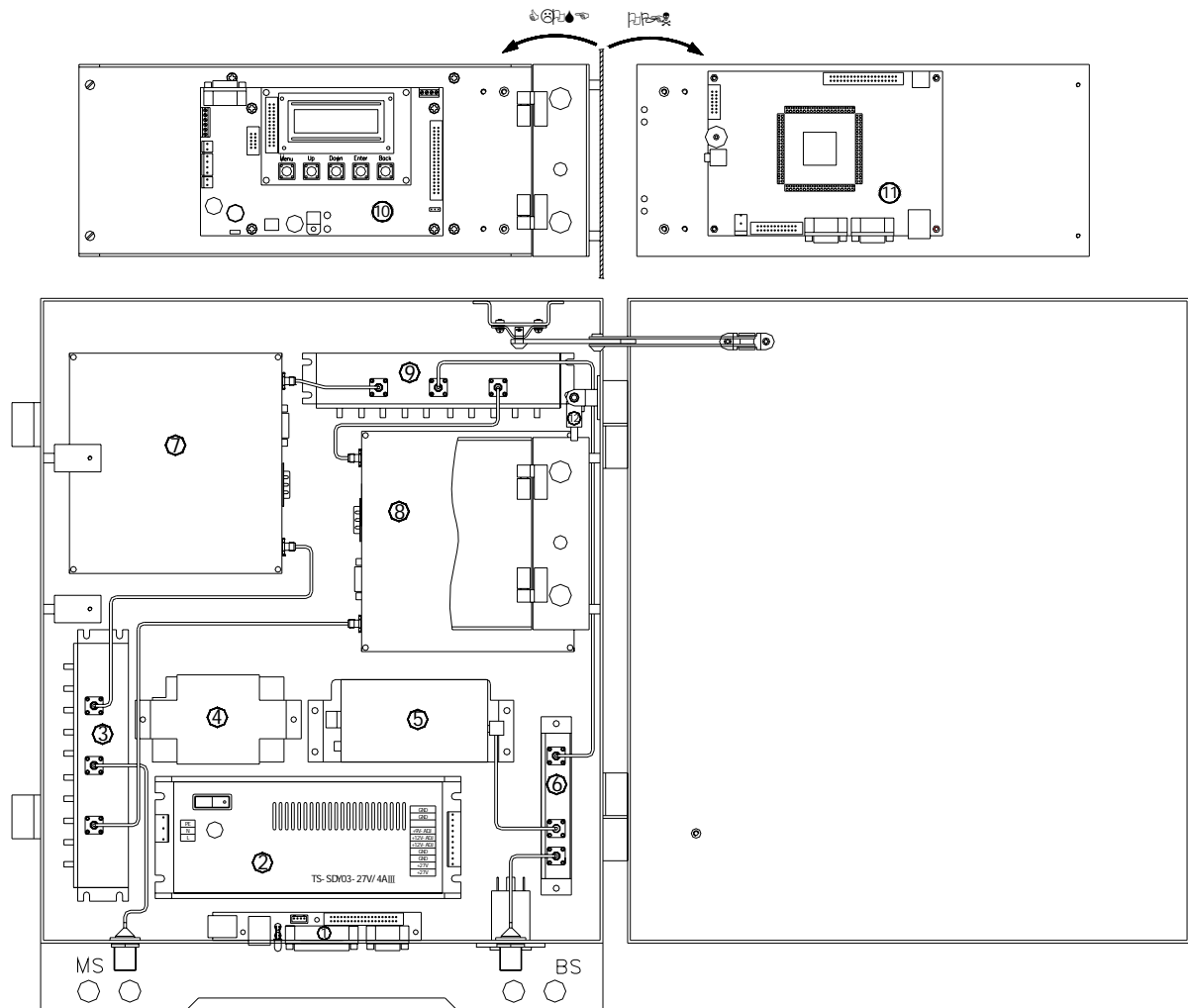
The first mixer stage on the BSA amplifier, which is controlled by a synthesizer, converts the received frequency down to the IF frequency. The signal is then filtered by a SAW band pass filter and amplified before it is fed to the second mixer stage, controlled by the same synthesizer as the previous one, for converting back to the original frequency. The SAW filter can be adjustable for each BSA has adjustable bandwidth.

A detector on the PA measures continuously the output level. The signal from this detector is used by the automatic level control, ALC, to supervise and, if necessary, reduce the output power to keep it under a setting level.

The output signal passes duplex filter (DPX) and fed to the repeater service (MS) antenna.

The uplink signal path, i.e. from the mobile station through the repeater to the base station, is identical to the downlink path the other way round. Only some levels and component values differ.

3.2. Unit Descriptions



1. LAN and Dry Contact Interface board
2. PSU (Power Supply Unit)
3. MS Duplexer
4. Battery for Control Unit
5. Modem
6. BS Directional Coupler
7. Downlink Integrated Module
8. Uplink Integrated Module
9. BS Duplexer
10. Keypad and LCD
11. Control Unit board
12. Door Switch

4. Installation

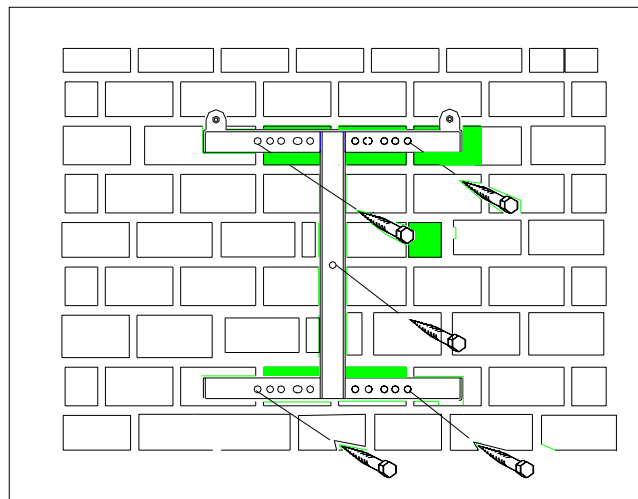
A preferable site for the repeater is a tempered and ventilated place. If a repeater is placed outdoor and can be exposed to direct sunshine, it is essential that the air can circulate around the repeater with no obstacle.

Do not install or open a repeater at bad weather, such as intense rainfall, snowfall or hail, storm or high wind, extremely low or high temperature and high humidity.

4.1. Mounting

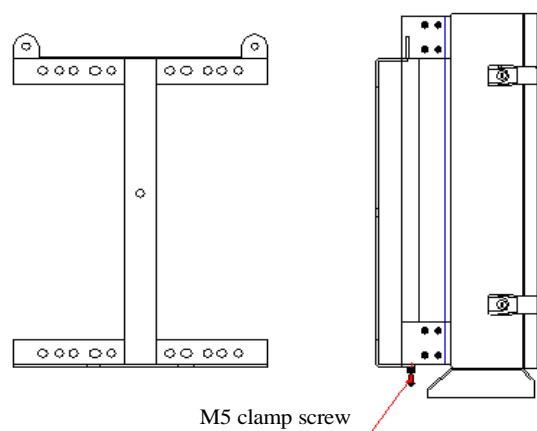
1. Mount the provide bracket

Normally, the repeater is mounted on a wall. The mounting bracket is attached to a wall using locking screws.



2. Hang the repeater

After attached the bracket, hang the repeater on the two upper supports and use one M5 screw to fasten the repeater to the bracket.



4.2. Connection

1. Connect antennas

Connect the service antenna (MS) and donor antenna (BS) coaxial cables to the N type female connectors marked with MS and BS.

2. Connect repeater to AC supply

Plug in the power connector on the bottom of the repeater.

3. Station ground

For the repeater supplied from mains, the mains outlet must be grounded. There is a ground screw (M5) on the right side of the repeater.

5. Operation and Maintenance

5.1. WEB Interface

5.1.1. Introduction

Longent repeaters allow you to read and modify the current status via local WEB as well as remote SNMP.

The main program features:

- Supporting local WEB interface to show and modify the status value
- Supporting Http 1.0
- Supporting remote SNMP to show and modify the status value
- Supporting SNMP versions 1, 2.

5.1.2. Hardware and Software Requirements

Your computer must meet the following requirements to be able to connect the repeaters via local WEB interface:

- Pentium III processor 600MHz or higher
- RAM 64 MB minimum, 256 MB recommended
- SVGA-compatible video card supporting the resolution of 800*600 or higher
- Network adaptor
- A cross cable to connect your computer and the repeater
- A WEB browser like IE 5.0 or higher
- Installed and configured TCP/IP protocol stack

Your computer must meet the following requirements to be able to connect the repeaters via remote SNMP:

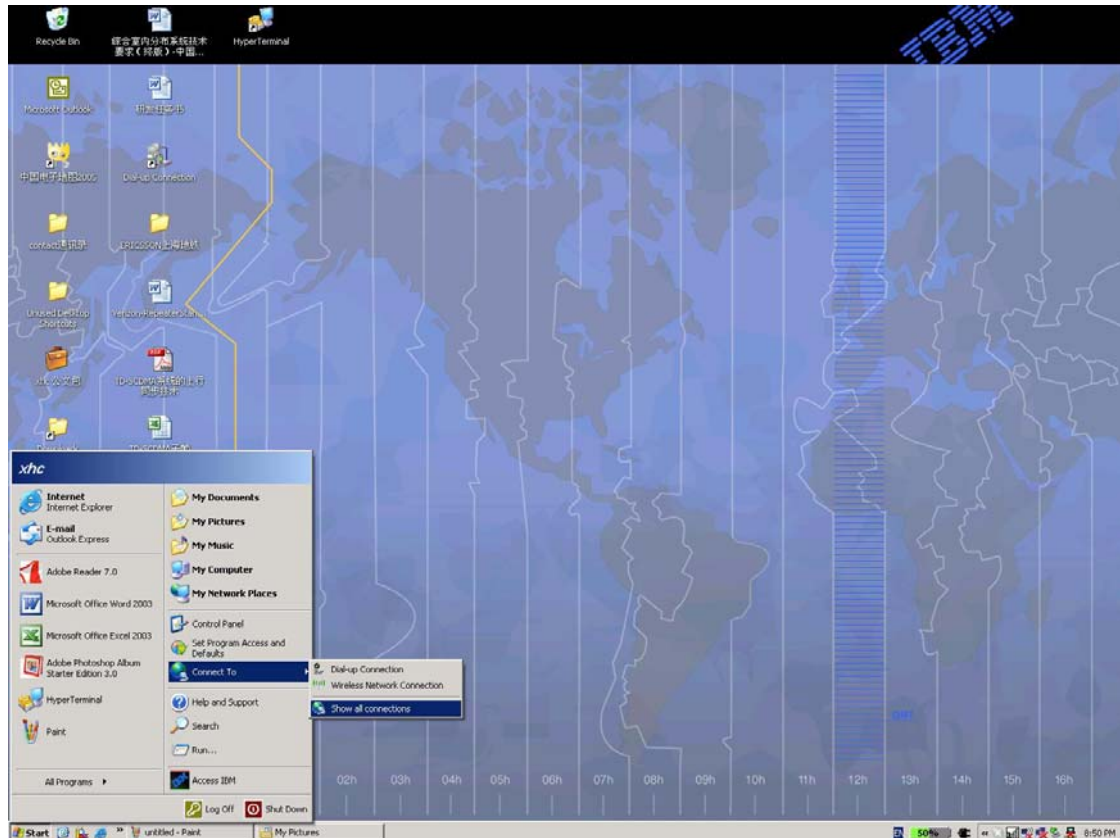
- Pentium III processor 600MHz or higher
- RAM 64 MB minimum, 256 MB recommended
- SVGA-compatible video card supporting the resolution of 800*600 or higher
- A wireless CDMA Modem to connect through the Asynchronous and Fax Service
- A SNMP Manager to append MIB file and read repeater

5.1.3. Environment Configuration

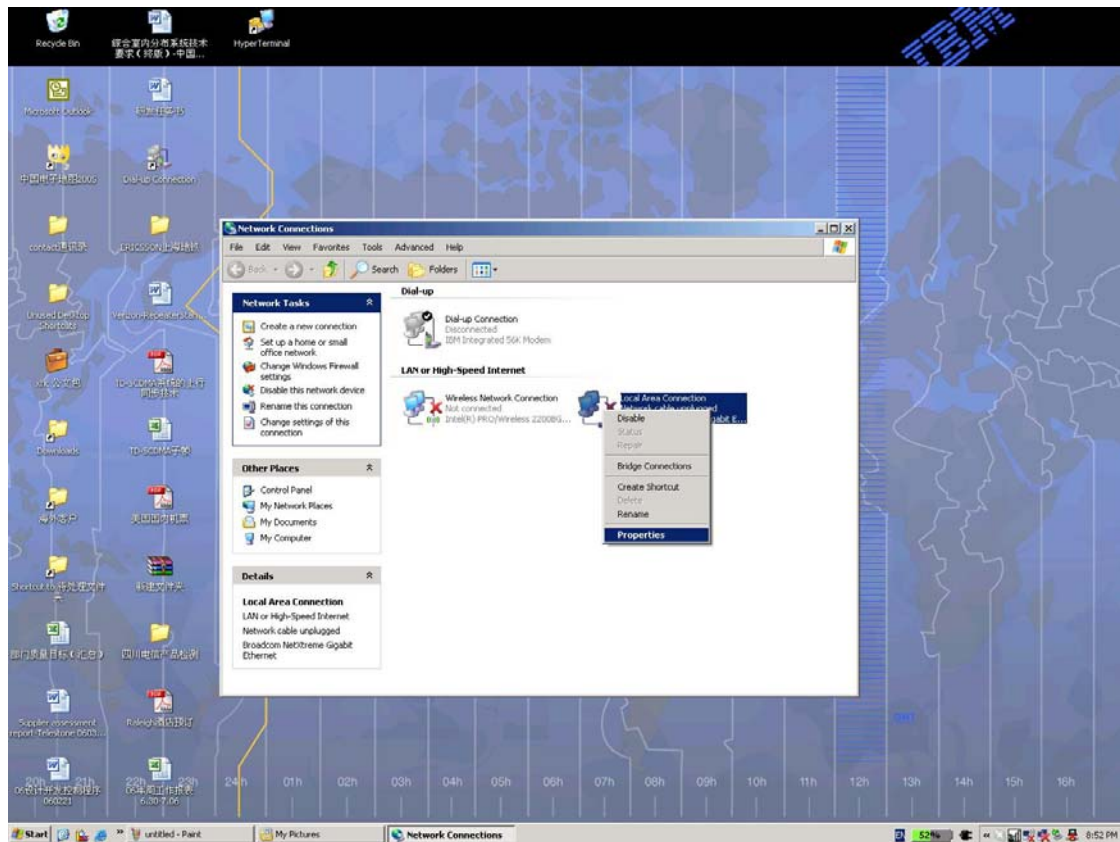
The repeater uses the WEB interface to configuration. It used the static IP. Default IP is 192.168.15.15. So your computer must use the static IP too and the same subnet mask (255.255.255.0). Your computer can use all the IP from 192.168.15.1 to 192.168.15.254 except the repeater's one (default is 192.168.15.15).

The method of configuration is following:

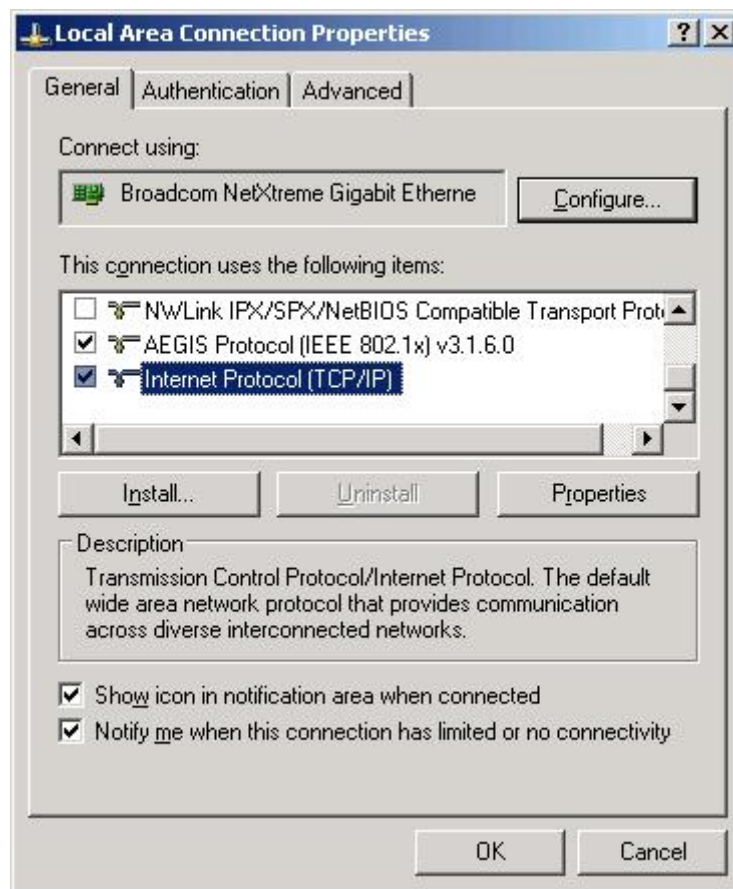
First, open the “start” menu. Choose the “**Show all the connects**” from the “**Connect to**”.



In the “Network Connections” window, right click the “Local Area Connection” and choose the “Properties” in the pop menu.



In the “**Local Area Connection Properties**”, there is a “**General**” page. In this page, choose the “**Internet Protocol(TCP/IP)**” in the “**This connection uses the following items**” list. Click the “**Properties**” button.



In this “**Internet Protocol (TCP/IP) Properties**” page, choose the “**Use the following IP address**”, and sign the “**IP address**” like 192.168.15.14 and “**Subnet mask**” 255.255.255.0. Others are empty.

The screenshot shows the 'Internet Protocol (TCP/IP) Properties' dialog box with the 'General' tab active. The text inside reads: 'You can get IP settings assigned automatically if your network supports this capability. Otherwise, you need to ask your network administrator for the appropriate IP settings.' There are two radio buttons: 'Obtain an IP address automatically' (unselected) and 'Use the following IP address:' (selected). Below the selected radio button are three text boxes: 'IP address:' containing '192 . 168 . 0 . 99', 'Subnet mask:' containing '255 . 255 . 255 . 0', and 'Default gateway:' which is empty. Below these are another two radio buttons: 'Obtain DNS server address automatically' (unselected) and 'Use the following DNS server addresses:' (selected). Below the selected radio button are two text boxes: 'Preferred DNS server:' and 'Alternate DNS server:', both of which are empty. At the bottom right of the dialog is an 'Advanced...' button. At the very bottom are 'OK' and 'Cancel' buttons.

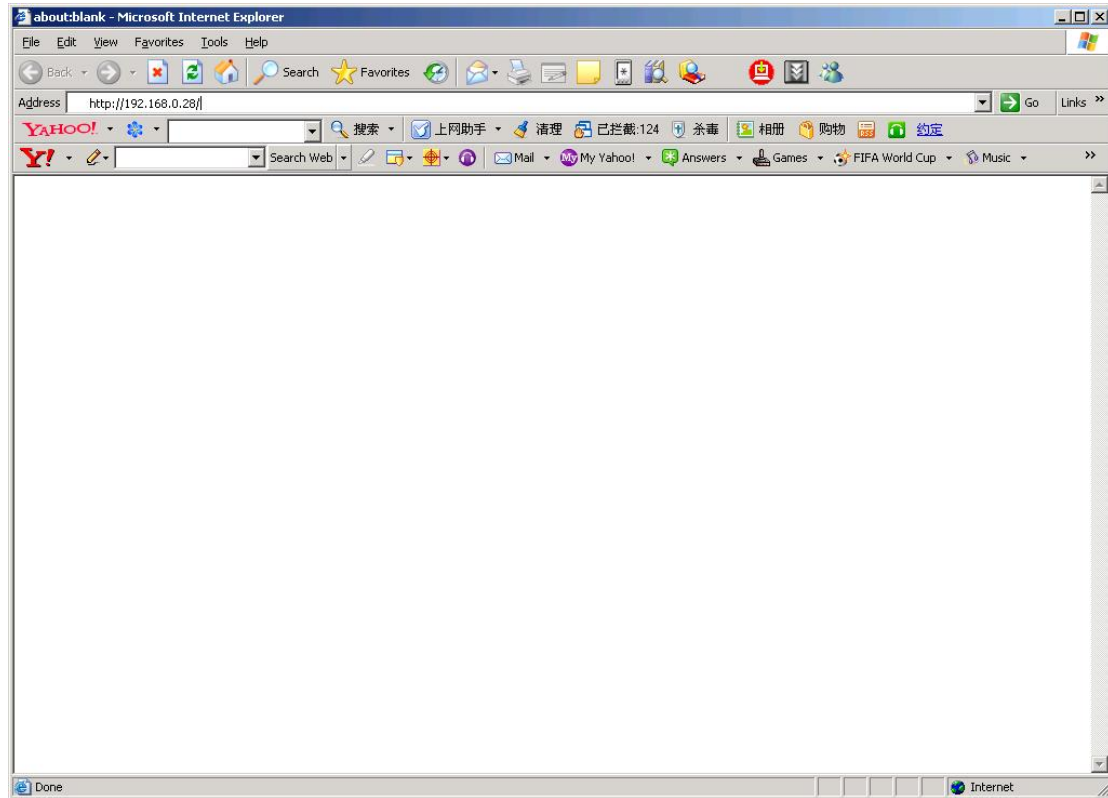
Press the “**OK**” button, you’ll finish the configuration.

Now you can use a cross cable to connect your computer and the repeater. You can use IE to read and notify the repeater information.

Exception: Access without the IP.

5.1.4. Basic Operation of WEB Interface

After configuration is done, you're able to use IE to read and notify the repeater information. Open a new IE. Input the <http://192.168.15.15> (or http:// IP you had set before) in the “Address”.

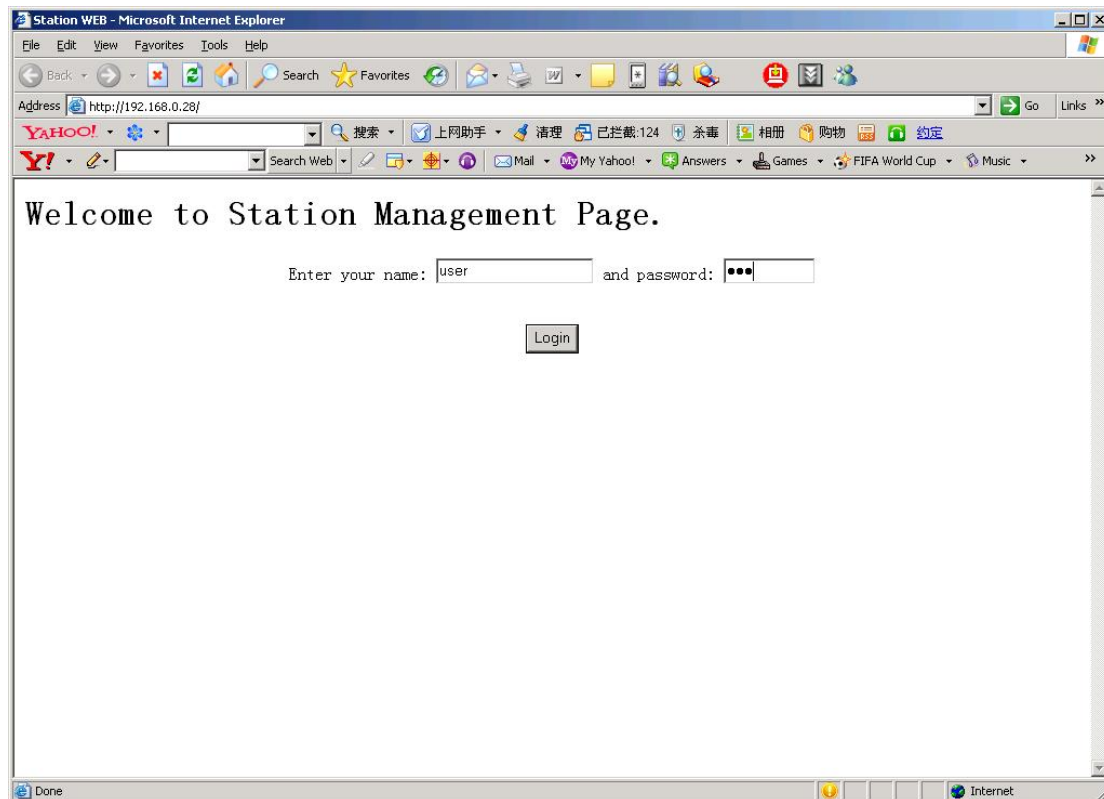


The IE will show the “**Station WEB**” page.

1. Login

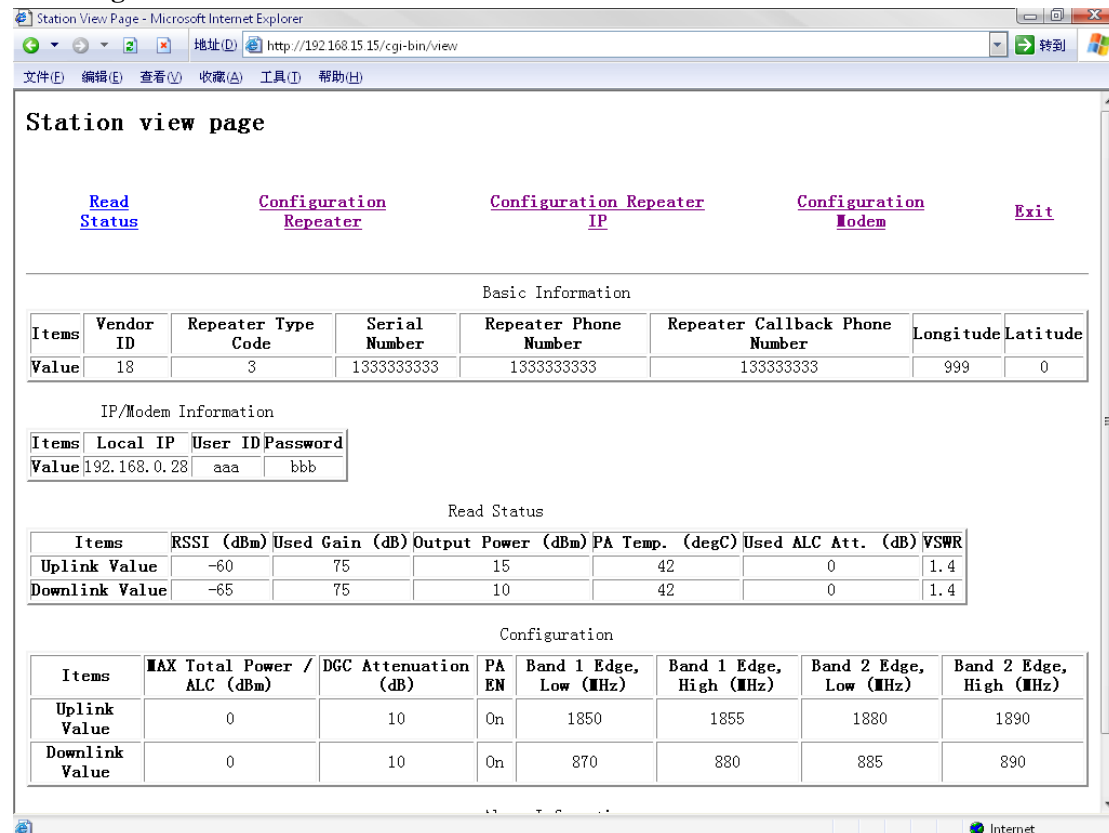
The first page is the “**Login**” page. You must input the correct *user name* and *password*.

Then you will press the “**Enter**” or “**login**” to login.



2. Station View Page

If you input the right *user name* and *password*, the page will jump to the main page – “**Station View Page**”.



This page has two parts divided by a line. The top part is the link to other operation page. The other is showing the station information.

Operation page link:

- **Read Status** Read the new information of the station.
- **Configuration Repeater** Configure the station like ALC, DGC etc.
- **Configuration Repeater IP** Configure the local IP for next connect.
- **Configuration Modem** Configure the modem to the wireless connect.
- **Exit** End of the using and return login page.

Station Information:

- **Basic Information** Show the basic information of the repeater.
- **IP/Modem Information** Show the IP and the Modem information.
- **Read Status** Show the parameters of the repeater that can read only.
- **Configuration** Show the parameters that you can change to change the repeater state.
- **Alarm Information** Show the Alarm state that the repeater has then. If don't have show "No alarm".

3. Read the repeater status

If you press the **Read Status** link, wait for a minute, the page will refresh and show the new status of the repeater.

Note: If there are some wrong strings or illegal strings on the page, please press the “**refresh**” on the IE, and then the page will show the right one.

4. Configuration the repeater

If you press the **Configuration Repeater** link, you will in the **Configuration Repeater** page. In this page you can change the basic information and the settable information.

The Configuration Repeater Page - Microsoft Internet Explorer
地址(D) http://192.168.15.15/cgi-bin/setshow
文件(F) 编辑(E) 查看(V) 收藏(A) 工具(T) 帮助(H)

Configuration Repeater

[View Page](#) [Exit](#)

Basic Information Setting

Vendor ID: 18
Repeater Type Code: 3
Serial Number: 1333333333
Repeater Phone Number: 1333333333
Repeater Callback Phone Number: 1333333333
Longitude: 999
Latitude: 0

RF Parameters Setting

Uplink Max Total Power / ALC: 0 (dBm)
Downlink Max Total Power / ALC: 0 (dBm)
Uplink DGC Attenuation: 10 (dB)
Downlink DGC Attenuation: 10 (dB)
Uplink PA EN: ☒ On ☐ Off
Downlink PA EN: ☒ On ☐ Off

Downlink Band 1 Edge

Low: 870 (MHz)
High: 880 (MHz)

Downlink Band 2 Edge

Low: 885 (MHz)

完毕 Internet

There are two links in the Configuration Repeater:

- **View Page** Return the view page and do nothing of configuration.
- **Exit** End of configuration, do nothing of configuration and return the login page.

Two parts you can Configuration:

- **Basic Information Setting** Change the basic information of the repeater.
- **RF Parameters Setting** Change the parameters of the repeater and the repeater will work as the input.

If you finish changing, you will press “**Enter**” or “**Set**” button to affirm the change. Please wait for a moment, and then the page will jump to the View Page and show the new status.

Note: If there are some wrong strings or illegal strings on the page, please press the “**refresh**” on the IE, and then the page will show the right one.

5. Configuration the repeater IP

If you press the **Configuration Repeater IP** link, you will in the **Configuration Repeater IP** page. In this page you can change the IP that you next time connect to.



There are two links in the Configuration Repeater:

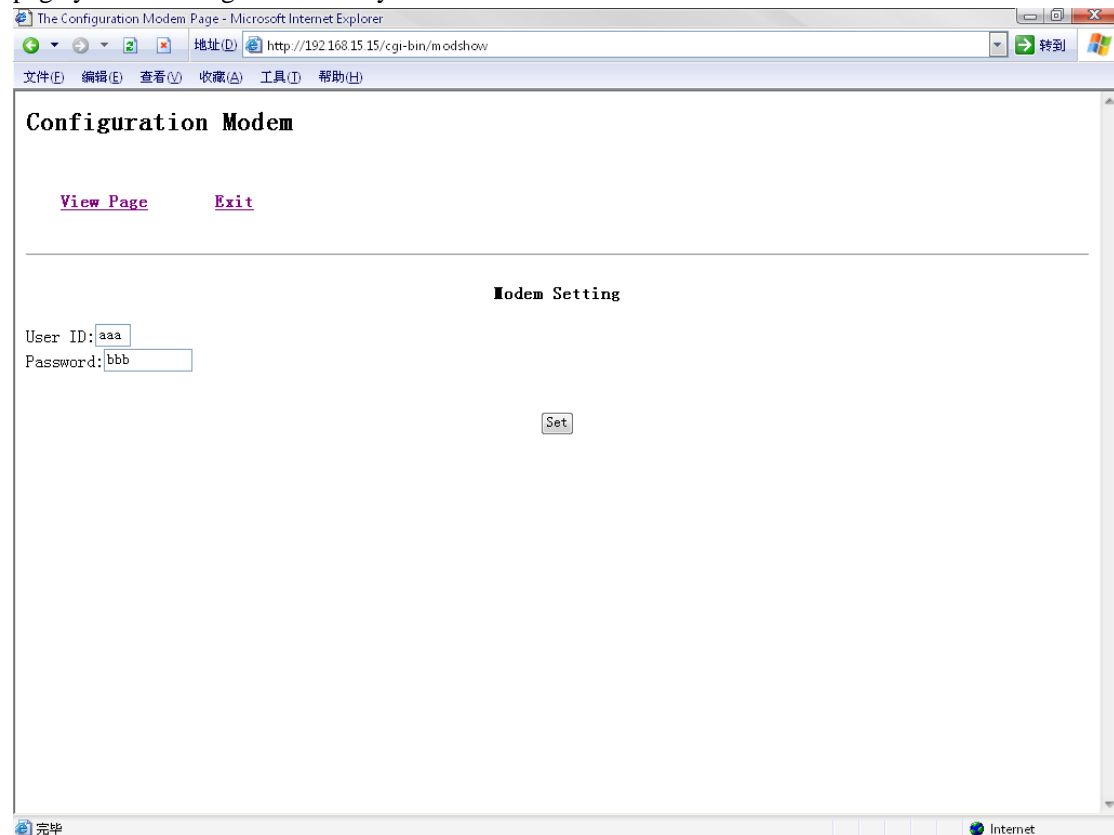
- **View Page** Return the view page and do nothing of configuration.
- **Exit** End of configuration, do nothing of configuration and return the login page.

The input box has the IP now. You can input the new one and press “**Set**” to affirm.

Note: If there are some wrong strings or illegal strings on the page, please press the “**refresh**” on the IE, and then the page will show the right one.

6. Configuration the Modem

If you press the **Configuration Modem** link, you will in the **Configuration Modem** page. In this page you can change the IP that you next time connect to.



There are two links in the Configuration Repeater:

- **View Page** Return the view page and do nothing of configuration.
- **Exit** End of configuration, do nothing of configuration and return the login page.

The input box has the modem information. You can input the new one and press “**Set**” to affirm.

Note: If there are some wrong strings or illegal strings on the page, please press the “**refresh**” on the IE, and then the page will show the right one.

7. Exit

If you don’t want to do the read or configuration, you can press the “Exit” to end of you operation and do nothing of the configuration.

5.2. Keypad Interface

To be continued

Federal Communications Commission Statement

This device complies with part 15 of the FCC Rules. Operation is subject to the following two conditions: (1) This device may not cause harmful interference, and (2) this device must accept any interference received, including interference that may cause undesired operation.

This equipment has been tested and found to comply with the limits for a Class B digital device, pursuant to part 15 of the FCC Rules. These limits are designed to provide reasonable protection against harmful interference in a residential installation. This equipment generates, uses and can radiate radio frequency energy and, if not installed and used in accordance with the instructions, may cause harmful interference to radio communications. However, there is no guarantee that interference will not occur in a particular installation. If this equipment does cause harmful interference to radio or television reception, which can be determined by turning the equipment off and on, the user is encouraged to try to correct the interference by one or more of the following measures:

- Reorient or relocate the receiving antenna.
- Increase the separation between the equipment and receiver.
- Connect the equipment into an outlet on a circuit different from that to which the receiver is connected.
- Consult the dealer or an experienced radio/ TV technician for help.

CAUTION:

Any changes or modifications not expressly approved by the grantee of this device could void the user's authority to operate the equipment.

FCC RF Radiation Exposure □

This equipment complies with FCC RF radiation exposure limits set forth for an □ uncontrolled environment. This equipment should be installed and operated with □ a minimum distance of 30cm between the radiator and your body. □