



IA OEM-DAUB1 2400 802.15.4/ZigBee™ Dongle

Quick Start Guide
Version 1.0r



Integration Associates, Inc.
110 Pioneer Way, Unit L
Mountain View, California 94041

Tel: 650.969.4100
Fax: 650.969.4582
www.integration.com
marketing@integration.com
techsupport@integration.com

IA OEM-DAUB1 2400
802.15.4/ZigBee Dongle

Quick Start Guide
Version 1.0
Revision Date: November 13, 2006

The information is provided "as is" without any express or implied warranty of any kind, including warranties of merchantability, non-infringement of intellectual property, or fitness for any particular purpose. In no event shall Integration Associates, Inc., or its suppliers be liable for any damages whatsoever arising out of the use of or an inability to use the materials. Integration Associates, Inc., and its suppliers further do not warrant the accuracy or completeness of the information, text, graphics, or other items contained within these materials. Integration Associates, Inc., may make changes to these materials, or to the products described w/ithin, at any time, without notice.

© 2006 Integration Associates, Inc. All rights reserved. Integration Associates is a trademark of Integration Associates, Inc. All trademarks belong to their respective owners.

SAFETY INFORMATION

All safety information must be read carefully and fully understood, before attempting to use your IA OEM-DAUB1 2400 product.

This manual contains the safety information that must be observed in order to avoid potential hazards that could result in personal injuries or damage your IA OEM-DAUB1 2400 product.

The IA OEM-DAUB1 2400 Unit

Warning: This product contains no user serviceable parts. Never remove the covers or dismantle the IA OEM-DAUB1 2400. Contact an authorized Integration service provider if repair or adjustment is necessary.

Caution: To avoid damage to this product never allow any liquids to spill into any part of the product, and never expose the product to rain or to water. If any of those events occurs switch off the product immediately. Contact an authorized Integration service provider for assistance before attempting to use the product again.

Never place this product on top of or adjacent to a heating device, and never expose it to direct sunlight. Never store in an unventilated room or vehicle where excessive internal temperatures may be encountered.

If the product is ever dropped and damaged, or you detect emission of extraordinary odour or excessive heat, switch off the product immediately. Contact an authorized Integration service provider for assistance before attempting to use the product again.

If this product is exposed to cold temperature, allow it to warm to room temperature before use. This will prevent the occurrence of harmful condensation within the product.

TABLE OF CONTENTS

Safety Information	ii
Table of Contents	iii
1. Introduction	4
Welcome to the IA OEM-DAUB1 2400	4
1. Introduction	5
What's in the Box.....	5
2. Installation	6
System Requirements	6
Operating System	6
Hardware.....	6
Setting Up the Hardware	7
Setting Up the Software.....	8
Installing the IA OEM-DAUB1 2400 Drivers.....	8
Verifying Drivers Installation	15
3. Maintenance.....	16
Care and Cleaning	16
4. Troubleshooting the IA OEM-DAUB1 2400	17
Problem.....	17
Possible Solution?	17
Upgrading/Updating the IA OEM-DAUB1 2400	17
5. Technical Support	18
Contacting Technical Support.....	18
Worldwide	18
Contacting Support:.....	18
6. Technical Specification	19
7. Index	20
EU Declaration of Conformity	Error! Bookmark not defined.
Integration Product Warranty	21
Notes	22
Related Products and Documents.....	23
Related Products	23
Related Documents	23

1. INTRODUCTION

WELCOME TO THE IA OEM-DAUB1 2400

Congratulations on your purchase of this quality Integration product. This manual explains how to install and use the IA OEM-DAUB1 2400 unit.

The Integration IA OEM-DAUB1 2400 provides a simple interface between USB enabled devices and 802.15.4/ZigBee Devices.

1. INTRODUCTION

WHAT'S IN THE BOX

Now you have purchased your IA OEM-DAUB1 2400 unit, and while Integration products are carefully packed to prevent damage in transit, we recommend that the product is unpacked and inspected immediately on receipt.

If damage has occurred please advise your carrier and your supplier who will arrange appropriate action.

If it is necessary to re-pack the product for onward shipping or returning to Integration for service, PLEASE ENSURE THAT THE ORIGINAL PACKING OR EQUIVALENT IS USED.

2. INSTALLATION

SYSTEM REQUIREMENTS

Before you begin installation of the software and hardware you need to ensure that your system meets the requirements shown below.

Operating System

Your system should come with a pre-installed operating system or you may choose to upgrade your operating system to the latest version. Below you will find a list of those that the IA OEM-DAUB1 2400 software supports. Check to make sure that you have the following minimum operating system:

- Microsoft Windows XP Home® , Windows XP Professional® * or Microsoft Vista®
-

Hardware

Before you install the software, make sure your computer has the following minimum hardware requirements:

- Personal Computer with 300 MHz minimum processor, 2 GHz processor (Recommended). Please refer to the PC manuals that came with your system for system configuration information.
- Minimum of 128MB, 256 MB RAM memory (Recommended).
- 200 MB of free hard drive space.
- CD-ROM drive.
- 1024x768 Graphics display.
- Qty 1: 1.1 or 2.0 USB Compliant Port.

* Check website for updates.

2. INSTALLATION

SETTING UP THE HARDWARE

The IA OEM-DAUB1 2400 unit can be considered a plug and play device since all that is required is a USB port on your computer. Installing the IA OEM-DAUB1 2400 Dongle is simple, either connect directly to the USB port or via a USB extension cable to the USB port as shown below.



IA OEM-DAUB1 2400 Installation

2. INSTALLATION

SETTING UP THE SOFTWARE

The software package supplied for your IA OEM-DAUB1 2400 unit contains the following modules: -

- USB Drivers
- Microsoft.NET Framework ©
- IA OEM-DAUB1 2400 User Manual (PDF format)

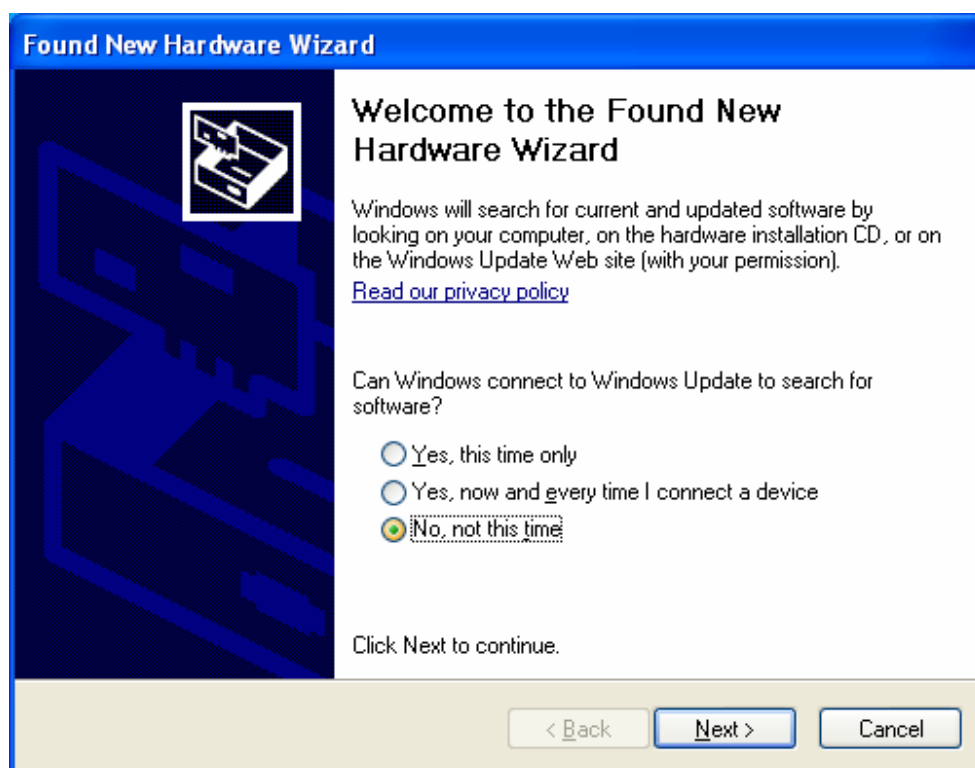
Installing the IA OEM-DAUB1 2400 Drivers

Ensure the IA OEM-DAUB1 2400 dongle is connected to the USB port on your computer. Microsoft Windows will recognize a new USB Device that has been connected to the computer's USB port and the following window will appear.

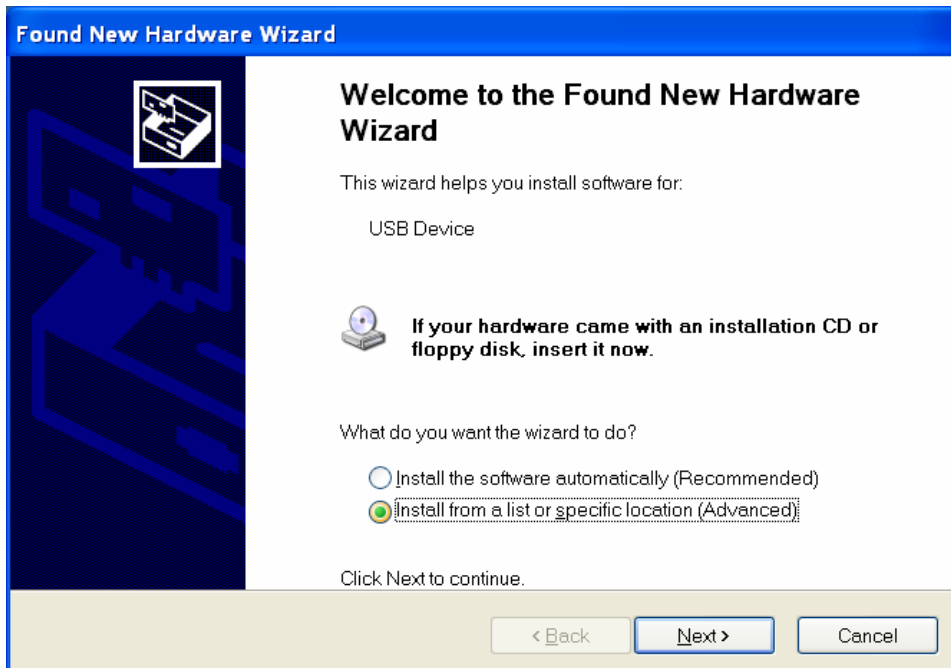


Select and click on the “**No, not this time**” radio button.

Click the **Next** button to proceed to the following screen.

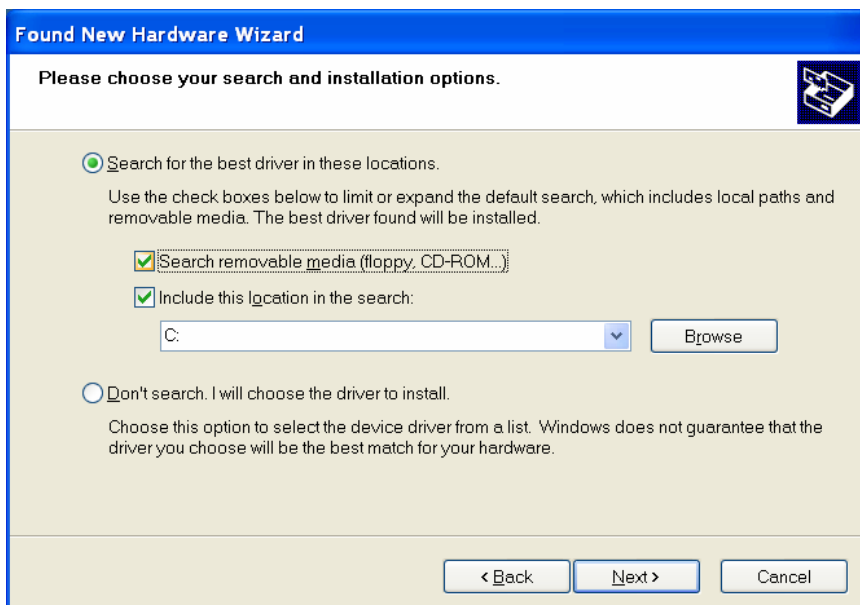


2. INSTALLATION



Select and click on the “**Install from a list or specific location**” radio button.

Click the **Next** button to proceed to the following screen



Select the “**search removable media (floppy CD- ROM...)**” tick box. Ensure the supplied CD-ROM is installed in the CD-ROM Drive.

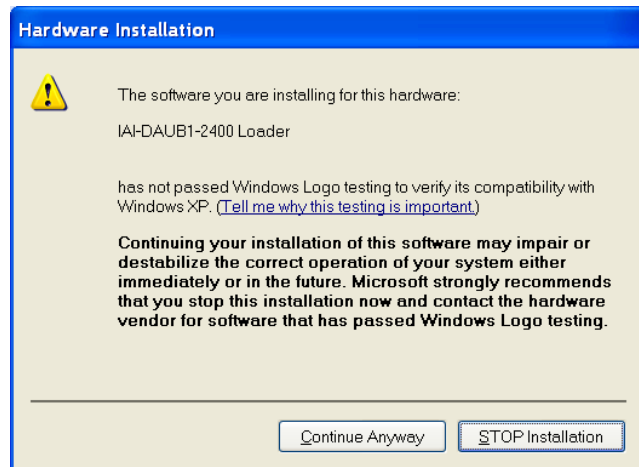
Click the **Next** button to proceed.

2. INSTALLATION

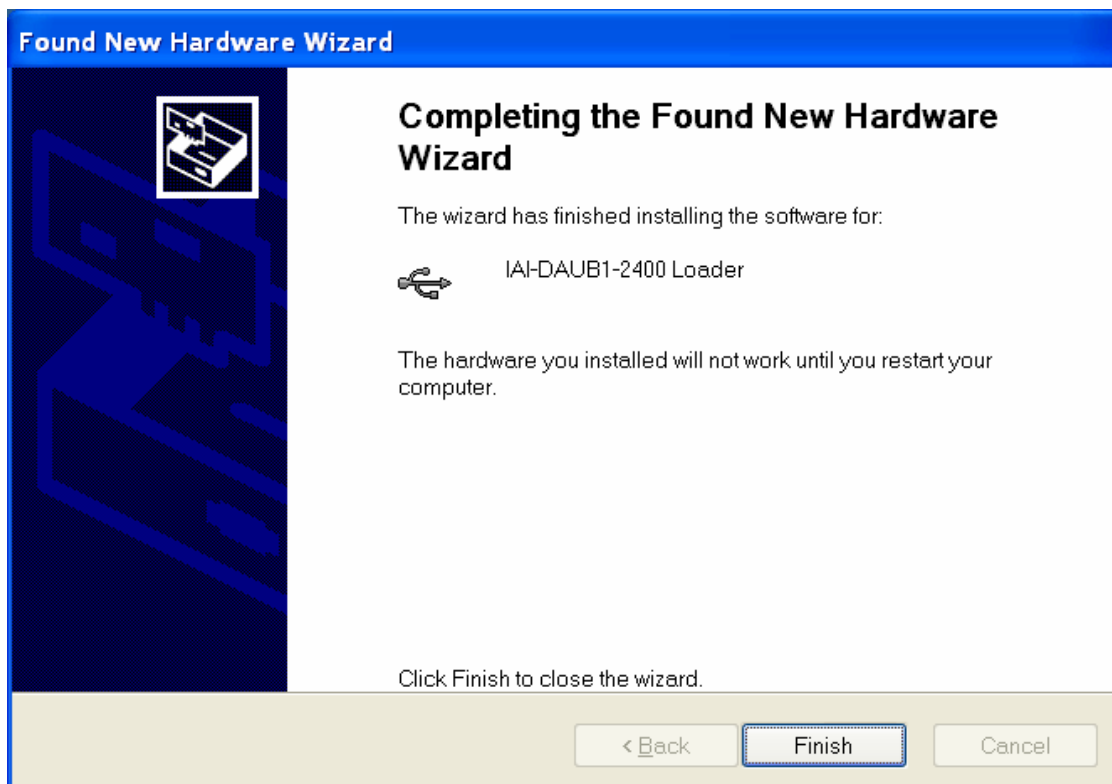
► IMPORTANT NOTE:

The window shown opposite will be displayed, this is normal.

Click the **"Continue Anyway"** button to proceed.

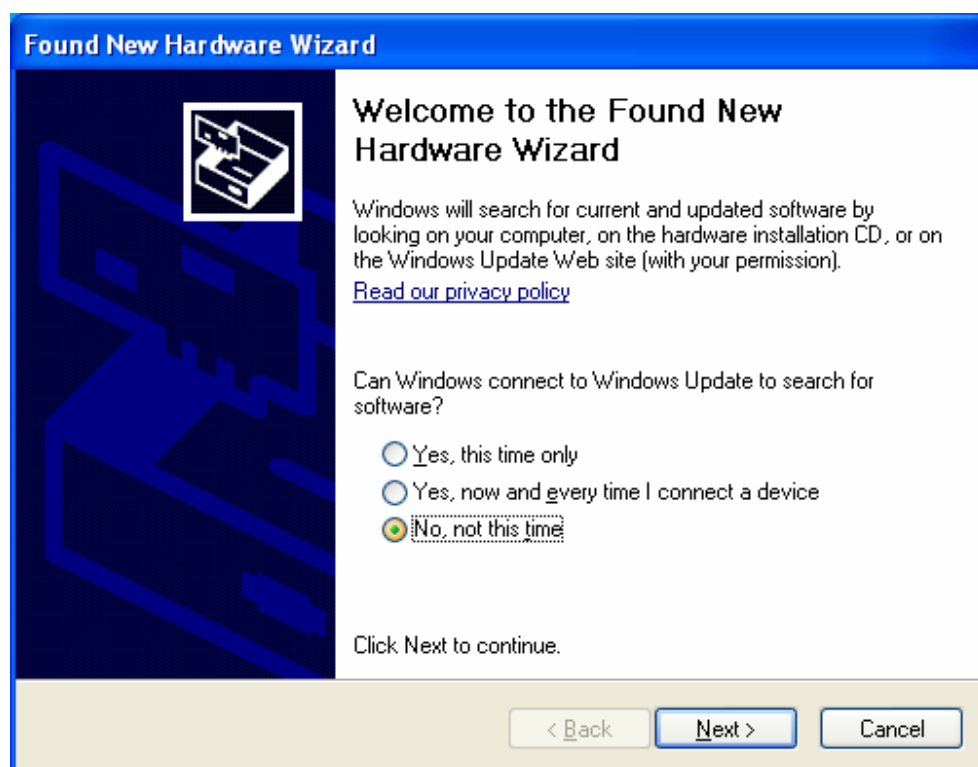
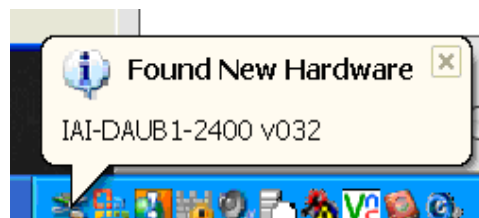


Please wait whilst the wizard installs the IA OEM-DAUB1 2400 Loader drivers onto your computer.



2. INSTALLATION

Microsoft Windows will recognize a new ZigBee Dongle that has been connected to the computer's USB port and the following window will appear.



Select and click on the **"No, not this time"** radio button.

Click the **Next** button to proceed to the following screen.

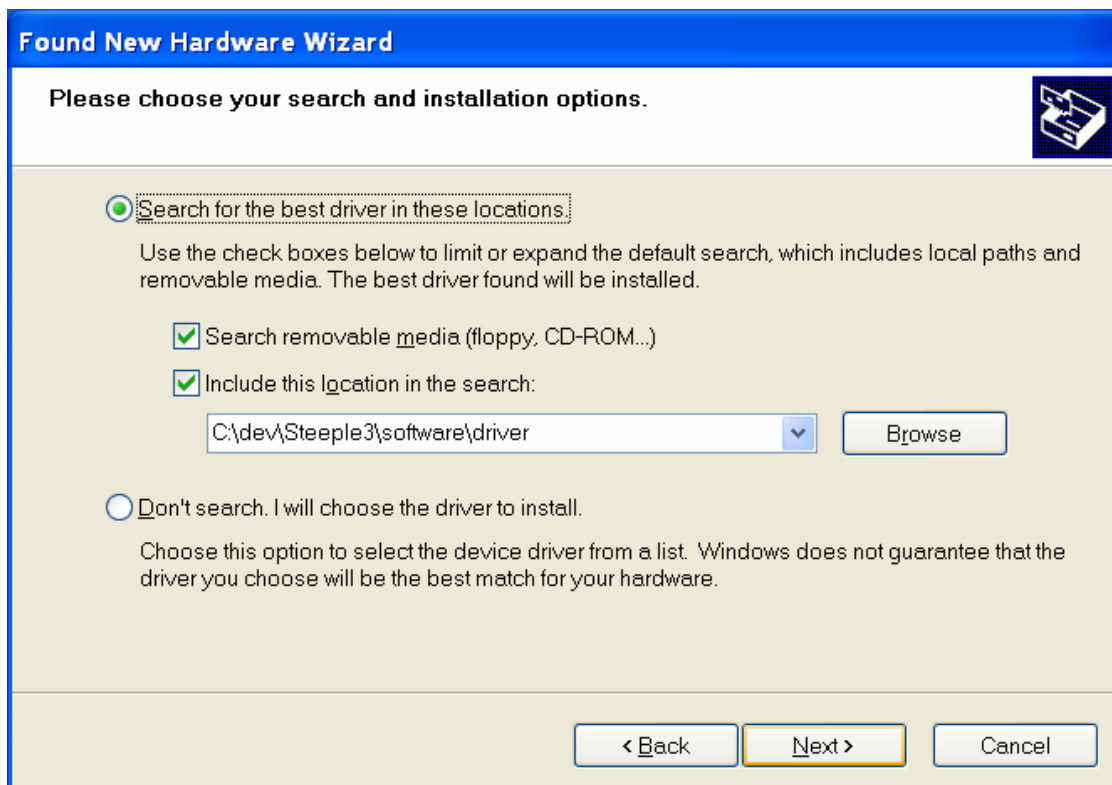
2. INSTALLATION



Select and click on the “**Install from a list or specific location**” radio button.

Click the **Next** button to proceed to the following screen

2. INSTALLATION

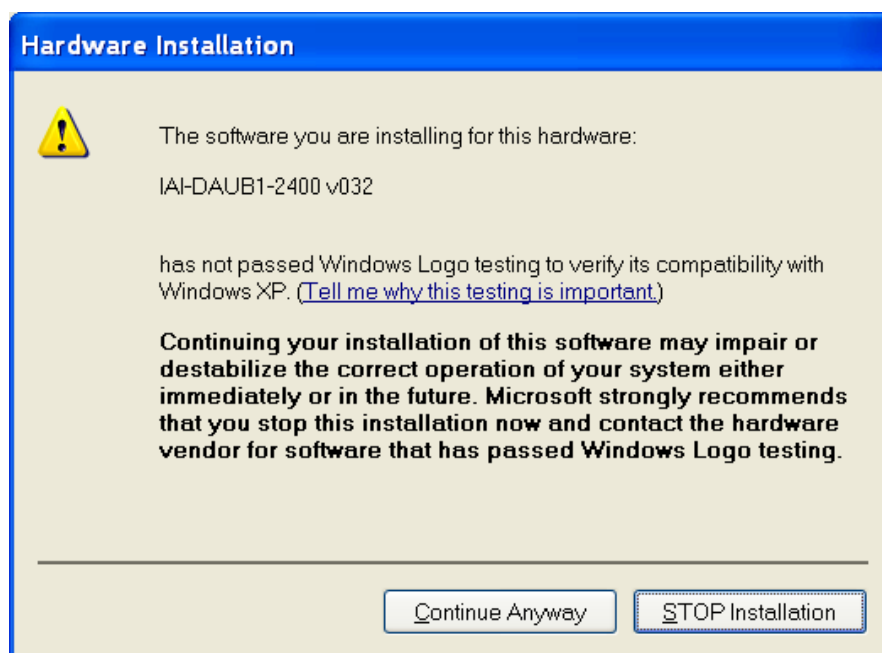


Select the **“Search removable media (floppy CD- ROM...)”** tick box. Ensure the supplied CD-ROM is installed in the CD-ROM Drive. Click the Next button to proceed.

► **IMPORTANT NOTE:**

The window shown opposite will be displayed, this is normal.

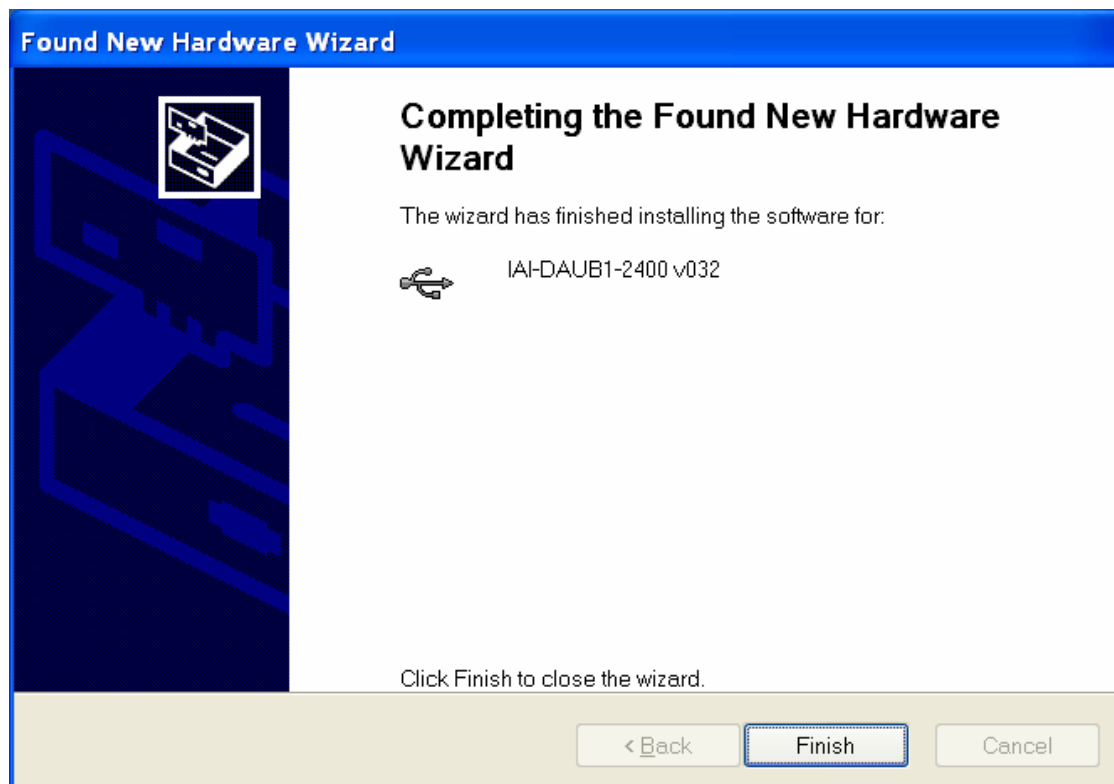
Click the **“Continue Anyway”** button to proceed.



2. INSTALLATION

Please wait whilst the wizard installs the IA OEM-DAUB1 2400 drivers onto your computer.

The drivers have been successfully installed when the window below is displayed.



Click the **Finish** button to close the wizard.

Your IA OEM-DAUB1 2400 device is now installed and ready for use.

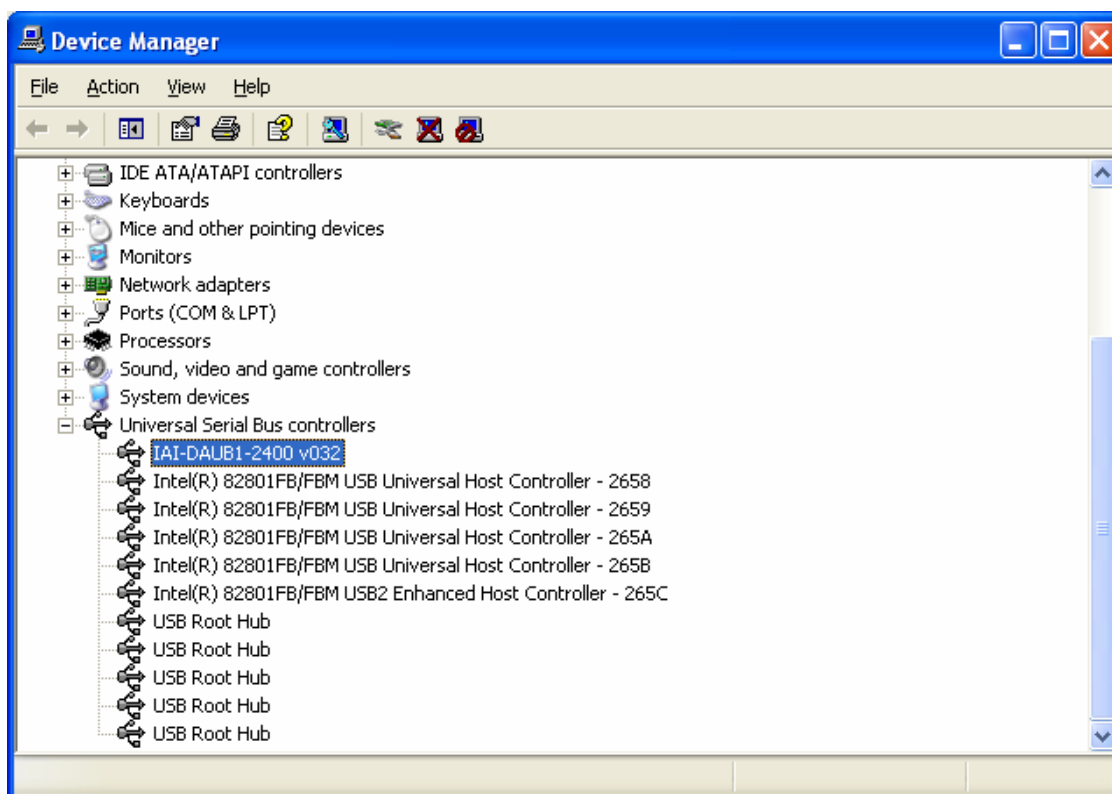
2. INSTALLATION

Verifying Drivers Installation

After installation is complete, you may check the driver components are installed on your computer via the Windows Device Manager as follows:

1. From the Windows desktop select **Start**, right click on **My Computer**.
2. Select **Properties**.
3. Select the **Hardware Tab** and click on the **Device Manager** button.
4. In the Device Manager window navigate to the **Universal Serial Bus Controllers**. Click the (+) sign adjacent to the “Universal Serial Bus Controllers” heading. You will find a new entry added to the list of devices, which appears as **IAI-DAUB1-2400**

Below is an example Device Manager window with the driver components installed, shown highlighted.



3. MAINTENANCE

Your IA OEM-DAUB1 2400 requires minimal maintenance.

Care and Cleaning

Plastic surfaces are easily scratched and can be marred by alcohol and various solvents. To keep your product clean, gently wipe with a soft clean lightly dampened cloth to dust this product, avoid excessive use of oil-based furniture polishes since the materials used in the dongle will accumulate more dust. A non-abrasive, anti-static cleaner/polisher is recommended.

4. TROUBLESHOOTING THE IA OEM-DAUB1 2400

Please check to see if any problem you may have with your IA OEM-DAUB1 2400 is described here before taking it for service or calling for support.

Problem	Possible Solution?
Q1. Power LED ON, not receiving data packets.	<ul style="list-style-type: none">• Try an alternative USB port on the computer.• If connected to a stand alone USB Hub, try connecting the dongle directly to the computer's USB port.• Check the distance of the transmitter is within 10 metres of the dongle.• Check the dongle is not obscured by metal objects.
Q2. Application reports no device found.	<ul style="list-style-type: none">• Check on device manager that the IAI-DAUB1-2400 is installed correctly• If the device appears as "IAI-DAUB1-2400 Loader", then it is only half installed. Right click on the device and select 'update driver'. Follow the installation instructions as described above.

Should none of the above solutions rectify the problem, refer to the technical support section in this manual for further assistance.

Upgrading/Updating the IA OEM-DAUB1 2400

Visit the Integration website for support information on updates for your IA OEM-DAUB1 2400, website address: www.integration.com.

5. TECHNICAL SUPPORT

CONTACTING TECHNICAL SUPPORT

If you contact us please be prepared to give us the following information:

- Complete name of product
- Version number on the CD-ROM, if any
- Version number and date stamp of the .inf, and .dll files.
- Specific details of the problem
- Complete information on your computer system setup

WORLDWIDE

Contacting Support:

Email: wireless.support@integration.com

6. TECHNICAL SPECIFICATION

DECLARATION OF CONFORMITY

CE Conformity



We, Integration Associates, declare under our sole responsibility that this product, to which this declaration relates, is in conformity with the related European Directives. CE marking is the responsibility of Integration Associates Inc.

USB Certification



This device has been certified to be used with USB compliant hardware platforms.

FCC Certification



FCCID: UR2001

This device complies with Part 15 of the FCC Rules.

Operation is subject to the following two conditions:

- (1) this device may not cause harmful interference, and
- (2) this device must accept any interference received, including interference that may cause undesired operation

7. INDEX

Care and Cleaning, 17
Contacting Technical Support, 19
Copyright and Trademark Information, ii
EU Declaration of Conformity, 22
Hardware, 7
Index, 21
Installing the IA OEM-DAUB1 2400 Drivers, 9
Operating System, 7
Setting up the hardware, 8
Setting up the software, 9
System Requirements, 7
Technical Specification, 20
Technical Support, 19
Troubleshooting the IA OEM-DAUB1 2400, 18
Upgrading / Updating the IA OEM-DAUB1 2400, 18
Verifying Drivers Installation, 16
Warranty, 22
Welcome to the IA OEM-DAUB1 2400, 5
What's in the box, 6

Integration Product Warranty

Integration warrants this product against defects in materials and workmanship 6 months. If a defect is discovered, Integration will, at its option, repair or replace the product at no charge provided it is returned during the warranty period, with transportation charges prepaid, to the authorized Integration dealer from whom you purchased the product. Proof of purchase may be required.

This warranty does not apply if the product has been damaged by accident, abuse, misuse, or misapplication; if the product has been modified without the written permission of Integration; or if any Integration serial number has been removed or defaced.

THE WARRANTY AND REMEDIES SET FORTH ABOVE ARE EXCLUSIVE IN LIEU OF ALL OTHERS, WHETHER ORAL OR WRITTEN, EXPRESSED OR IMPLIED. INTEGRATION SPECIFICALLY DISCLAIMS ANY AND ALL IMPLIED WARRANTIES, INCLUDING, WITHOUT LIMITATION, WARRANTIES OF MERCHANTABILITY AND FITNESS FOR A PARTICULAR PURPOSE.

No Integration dealer, agent, or employee is authorized to make any modification, extension, or addition to this warranty.

INTEGRATION IS NOT RESPONSIBLE FOR SPECIAL, INCIDENTAL, OR CONSEQUENTIAL DAMAGES RESULTING FROM ANY BREACH OF WARRANTY, OR UNDER ANY OTHER LEGAL THEORY, INCLUDING BUT NOT LIMITED TO LOST PROFITS, DOWNTIME, GOODWILL, DAMAGE TO OR REPROGRAMMING, OR REPRODUCING ANY PROGRAM OR DATA STORED IN OR USED WITH INTEGRATION PRODUCTS.

Some states do not allow the exclusion or limitation of incidental or consequential damages or exclusions of implied warranties, so the above limitations of exclusions may not apply to you. This warranty gives you specific legal rights, and you may also have other rights that vary from state to state.

NOTES

RELATED PRODUCTS AND DOCUMENTS

Related Products

DESCRIPTION	ORDERING NUMBER	
802.15.4 / ZigBee USB Dongle	IA OEM-DAUB1 2400	S3

Related Documents

DESCRIPTION	DOCUMENT NUMBER	
ZigBee PC Dynamic Link Library Developers Guide	IA CPX-UGDL	0209
ZigBee C++ Developers Guide	IA CPX-AN1	0210
802.15.4 PC Dynamic Link Library User Guide	IA CPX-UGSU	0168
802.15.4 Linux Programming Guide	IA CPX-UGLX	0182
ZigBee Stack Common Interfaces User Guide	IA ZGB-UGIF	0235
802.15.4 / ZigBee USB Dongle Quick Start Guide	IA OEM-QSUB1 2400	0286
802.15.4 / ZigBee USB Dongle Data Sheet	IA OEM-DAUB1 2400	0287
802.15.4 / ZigBee Wireless Protocol Analyser User Guide	IA MSC-UGSW3	0149

Integration Associates, Inc.
 110 Pioneer Way, Unit L
 Mountain View, California 94041
 Tel: 650.969.4100
 Fax: 650.969.4582
www.integration.com
info@integration.com
wireless.support@integration.com
 IUK286

This document may contain preliminary information and is subject to change by Integration Associates, Inc. without notice. Integration Associates assumes no responsibility or liability for any use of the information contained herein. Nothing in this document shall operate as an express or implied license or indemnity under the intellectual property rights of Integration Associates or third parties. The products described in this document are not intended for use in implantation or other direct life support applications where malfunction may result in the direct physical harm or injury to persons. NO WARRANTIES OF ANY KIND, INCLUDING, BUT NOT LIMITED TO, THE IMPLIED WARRANTIES OF MERCHANTABILITY OR FITNESS FOR A PARTICULAR PURPOSE, ARE OFFERED IN THIS DOCUMENT.

©2006 Integration Associates, Inc. All rights reserved. Integration Associates is a trademark of Integration Associates, Inc. All other trademarks belong to their respective owners.