

Tool Lock

Model:TL001

Operation Manual

A. System preparation

1. Open the main unit's battery compartment then insert the rechargeable battery pack inside of main unit and connect to the main unit. (see fig 1, 2, 3,4 below)



Fig 1

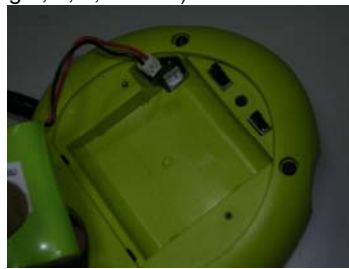


Fig 2



Fig 3



Fig 4

2. Open the remote controller battery compartment and insert the CR2032 battery (coin type battery) inside of remote controller.
3. Turn on the power switch and wait for three minutes for system set up before operation. (Fig 7)



Fig 7

4. After the system is being fully configured please charge the battery. Charge the battery by connecting DC adaptor to the main unit. (plug adaptor connector into main unit twice. Plug then unplug and plug into main unit again , see Fig 8 and 9). You will see the green LED is flashing during charging.



Fig 8



Fig 9

Once the battery is fully charged the power green LED will be lighting up steadily. The battery charging time will be around four hours.

B. Add or Delete device to link with main system

1 First time to add remote controller.

1-1. Use a paper clip or small size screw driver to push the learning key (inside of main unit near to battery compartment, see Fig 10) and hold it. (Red LED will flash then off Fig 11, Green LED will be on Fig 12)

1-2. Press the ARM pad on the remotely controller if Red LED is on Fig 13 and Green LED is off then release the learning key-- this means the learning process is successfully completed in between main unit and remote controller. Once the learning key is released then Red LED will be off. The first learned remote controller will be your master remote controller. Please put a mark on this master remote controller. This master remote controller will be used for adding new remote controller or deleting any remote controller in the future. Without having the master remote controller you can't add or delete the remote device to protect customer interest with better security control.



Fig 10



Fig 11 Red Led Flash



Fig 12 Green Led On



Fig 13 Red LED on after learning

Note: The main unit is designed to hold total 10 devices for adding more control devices.

2. Adding new remote controller (for #1, #2, #3, #4, #5 remote controllers):

2-1: Use tool to push the learning key and hold it. The Red LED will turn on and flashing one time (indicating the first memory address for #1 remote controller then off. The Green LED should be on ,

this means the addressed memory space is available for allowing new device to be added in) and it is ready for adding new device.

2-2: Press ARM pad on the Master remote controller first, at this moment the Red LED is off and Green LED is on, within 30 seconds after you hit the Master Arm key, you must press #1 remote controller Arm key pad once then Red LED will be ON and Green LED will be off. This means the #1 remote controller is learned by main unit added into system.

(Note: the whole adding process need to be done within 30 seconds after press ARM pad on the Master remote controller). Please mark the new controller number with #1 for later reference use.

In a later day when you want to add more remote controllers, you can follow the adding controller process describe above with following notes.

- The RED LED flashing times stand for the memory location. (Flashing once means memory location #1 for remote controller #1. if flashing twice means memory location #2 for remote controller #2, ..etc) You can check the memory location by push learning key and watch the RED LED flashing times. To locate your targeted memory location you can repeatedly push and release learning key and watch the RED LED blinking times till you found it.
- After you push the learning key with memory location finding and if you found out the green LED is not on means this memory space is occupied. Then you need to release the learning key and push the learning key for next memory location space searching. The Red LED flashing times indicating the memory location and Green LED for the memory space availability. Continue this process to locate the available memory location for adding new remote controller.

3. Delete remote controller from system

Repeat the push and release the learning key till to locate the targeted device which needed to be deleted then hold it. Press the DISARM pad of the master remote controller if you see the RED LED on and Green LED on then release the learning key by now this controller is deleted from system.

4. Select the sensor sensitivity setting

By sliding the sensitivity switch setting: location 1 means very sensitive, location 2 means sensitive, location 3 means less sensitive. (refer Fig.7)

5. Complete turn off unit

By sliding the on-off switch: If the unit will not be used for more than a week in order to save the battery power and protect the battery then you need to turn off system power by sliding switch to off position. When turn on the system again please wait for three minutes before operation.

C. System ARM ,DISARM and LEDs on - off , flashing information.

1. Red LED -- ARM

1-1: After main unit is being placed on the tool/equipment, press the 'ARM' pad on the remote controller till a beeper sound once being heard then twenty seconds latter the Red LED will be flashing. Now the system is fully armed. (Twenty second is the initial waiting time for system ready).

1-2: If sensor is being triggered then the buzzer will be on for 20 seconds and Red LED will be flashing for 20 seconds then off. (There will be a two seconds time interval before the next trigger.) The alarm will be continuous on if the sensor is still vibrating (active) for another 20 seconds till the sensor is completed stable. After buzzer is off but the RED LED will be still flashing to indicate the equipment is being touched/moved. Only after the "DISARM" is being processed then the main unit will be reset.

1-3: For emergency case press the panic button to turn on the buzzer, press the "DISARM" button till the buzzer is off.

1-4: To release the ARM status by pushing the "DISARM" pad and Buzzer will sound twice and Red LED flashing twice.

2. Green LED

2-1: When power plug is being connected twice to the main unit the Green LED will be ON, after unplug the power plug then Green LED will be OFF. During the charging the system still can be armed. And the Green LED will be blanking three times per second (fast blinking) until battery is fully charged then Green LED will be ON continuously.

2-2: During the low battery mode (detected by the system) the Green LED will be flashing every second on and every second off (slow blinking). During the low battery mode, the main unit still can be running for 12 hours without charging.

You are cautioned that changes or modifications not expressly approved by the party responsible for compliance could void your authority to operate the equipment.