

Operation Description

This EUT is PMP (portable multimedia player). EUT is running the blufin on battery power, without connecting the AC power.

A Lithium-Ion Smart battery is supplied with this blufin.

Quick Manual

Turning the Blufin On and Off

To turn on the blufin



- 1 Install the **battery** and connect the **AC adapter**.
- 2 Adjust the **stand** at the back of the blufin to a comfortable angle.
- 3 Slide the **Power Switch** to the left, hold it for more than **0.1 seconds** and then release it. The blufin is turned on.

To turn off the blufin



- 1 Slide the **Power Switch** to the left, hold it for more than **0.1 seconds** and then release it. The blufin is turned off.

When the system cannot be shut down due to a system error, turn it off by sliding and holding the **Power Switch** for more than 4 seconds.

After that, when turning it on by sliding the Power Switch, the disk checking program may launch.

Using the blufin

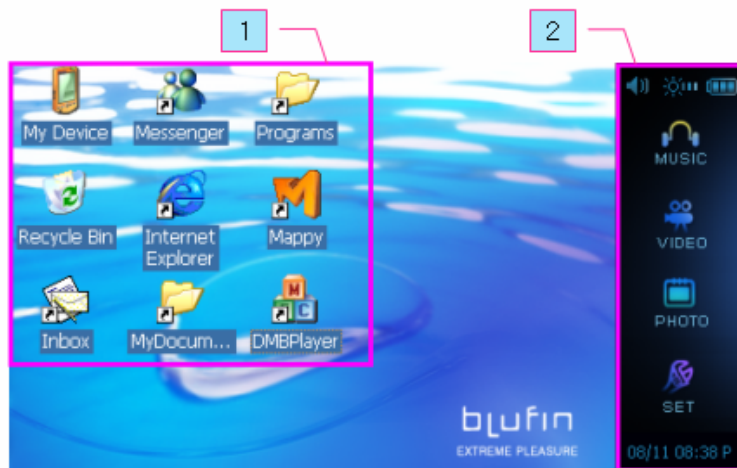
Program Launcher

The Program Launcher categorizes frequently used programs, folders so that you can easily manage and access them.

This program is designed for the small LCD size so that you can easily use this program with the Stylus Pen or your fingers.

Program Launcher Screen Layout

Screen Layout



1 Win CE Part Categories frequently used programs, folders so that you can easily manage and access them.

2 blufin Quick Launcher Shortcuts that you can easily access each functions with control panel of volume and screen brightness.

MUSIC You can play a music file.

VIDEO You can play a video, movie file.

PHOTO You can view a photograph or image file one by one or in a Slide-Show.

Set You can set the blufin function settings.

Volume Control

You can control the volume with the Volume Control button or Volume Control program.

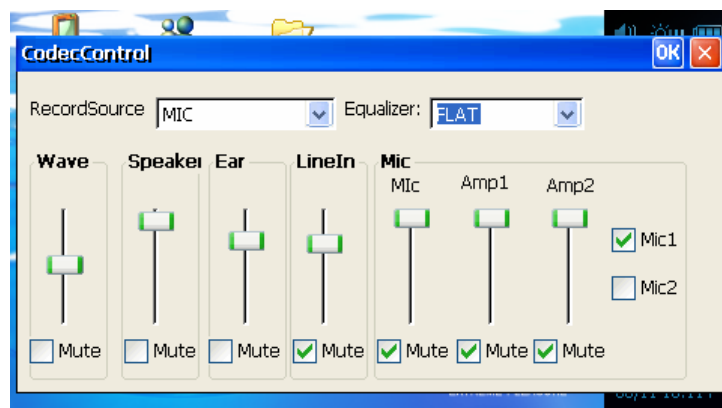
Using the Volume Control with the Volume Control Button

Click the **Volume Control Icon** on the task bar to turn up or down the volume.



Using the Volume Control with the Volume Control Program

Double Click on the **Volume** icon on the taskbar and adjust the master volume control.



Using Program Launcher

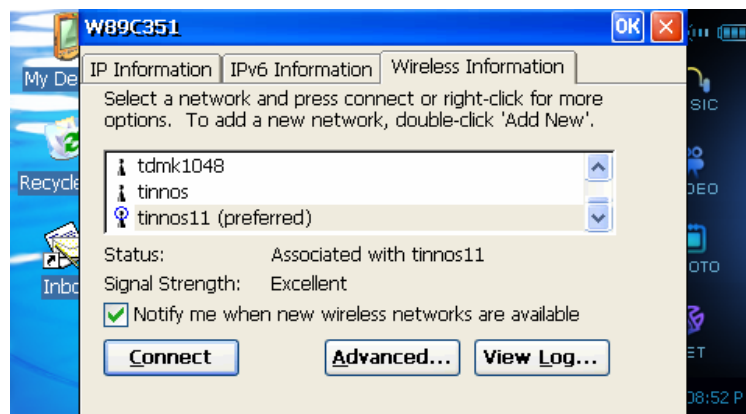
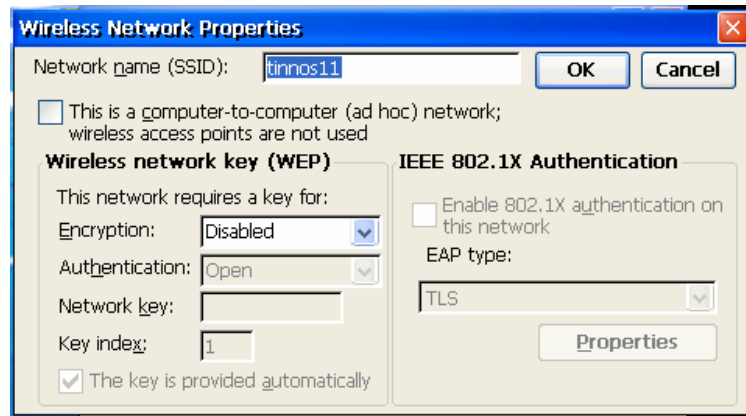
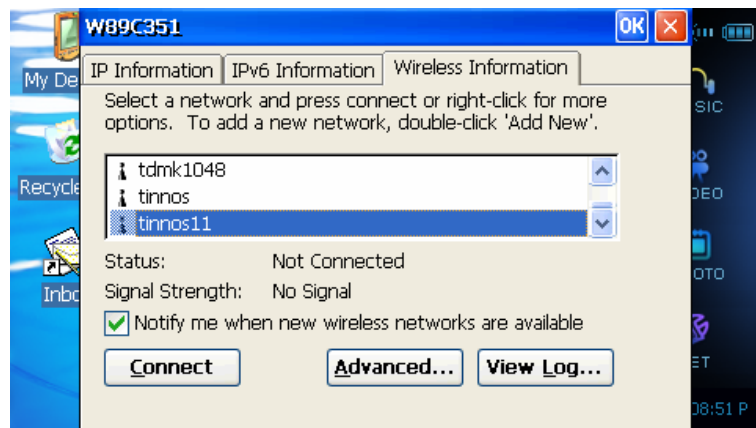
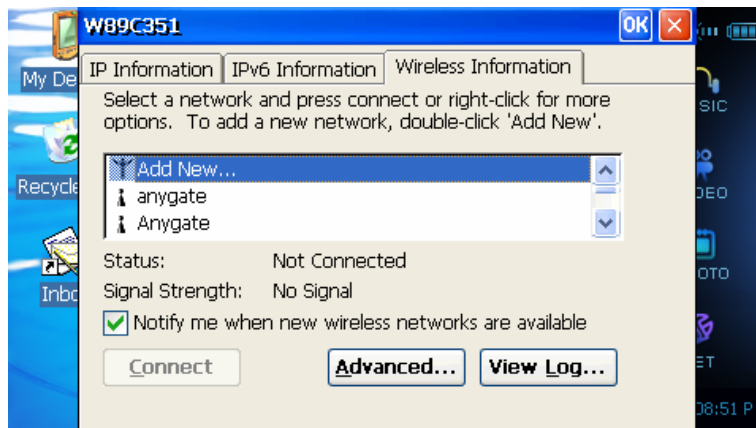
For example, the procedures to launch the **Internet Explorer** on the Program Launcher are described below.

- 1 Connect A wireless LAN card to the USB port of blufin.
- 2 Touch the Internet Explorer Icon. The Internet Explorer program is launched.

To use a wireless LAN, first connect to a wireless LAN AP and then you can access the network even when moving location. Or moving location and then you can access the network even when connecting to a wireless LAN AP.

1. Click **Internet Explorer Icon** on the Win CE Part of Launcher and click **View Available Wireless Networks**.
2. Click **Search AP** from the **Wireless** menu to search for wireless LAN APs.
3. Select an available wireless network and click the **Connect** button. For information on available wireless LAN APs, ask your network administrator.
4. The network key (security key) input window appears.
 - If a network key has been set for the wireless LAN AP, enter the network key and click the **Connect** button. For the network key information, ask your network administrator.
 - If no network key has been set for the wireless LAN AP, click the **Connect** button without entering the network key.





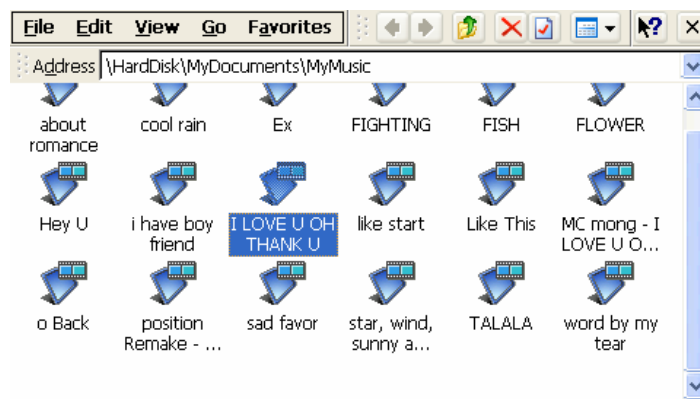
Playing a Music File

If a music file is registered to the **My MUSIC** folder, you can easily play the music file.

- 1 Click **MUSIC** Icon on the side launcher.
- 2 Double-click a music file.



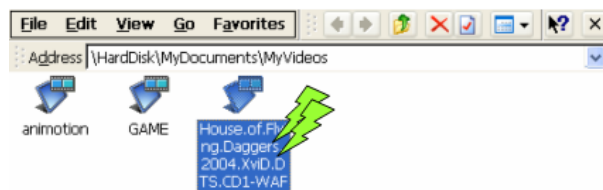
]



Playing a Movie(Video) File

The procedures to play a video file registered to the **My VIDEO** folder are described below.

- 1 Click **VIDEO** Icon on the side launcher.
- 2 Double-click a video file selected in the My Videos Folder. The file is played.
- 3 Click the Icon of **bluPlayer Launcher** on an image to control the playing files.

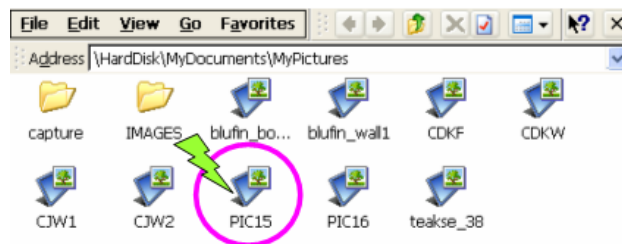




Viewing an Image

The procedures to view images registered to the **My Picture** folder one by one and through a Slide-Show are described below.

- 1 Click **PHOTO** Icon on the side launcher.
- 2 Double Click on a folder which includes images, and the images in the folder are displayed in the Image Viewer window.
- 3 Click the Icon of **bluSee Launcher** on an image to control the viewing images.



bluSee Launcher Function Icon

