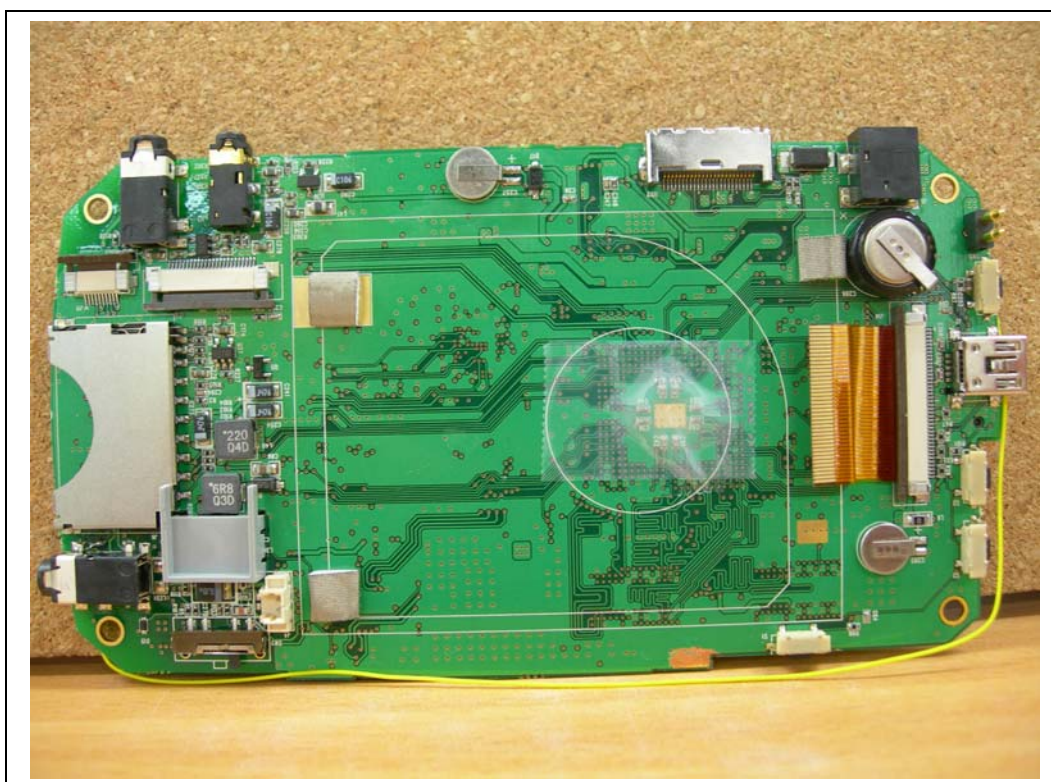
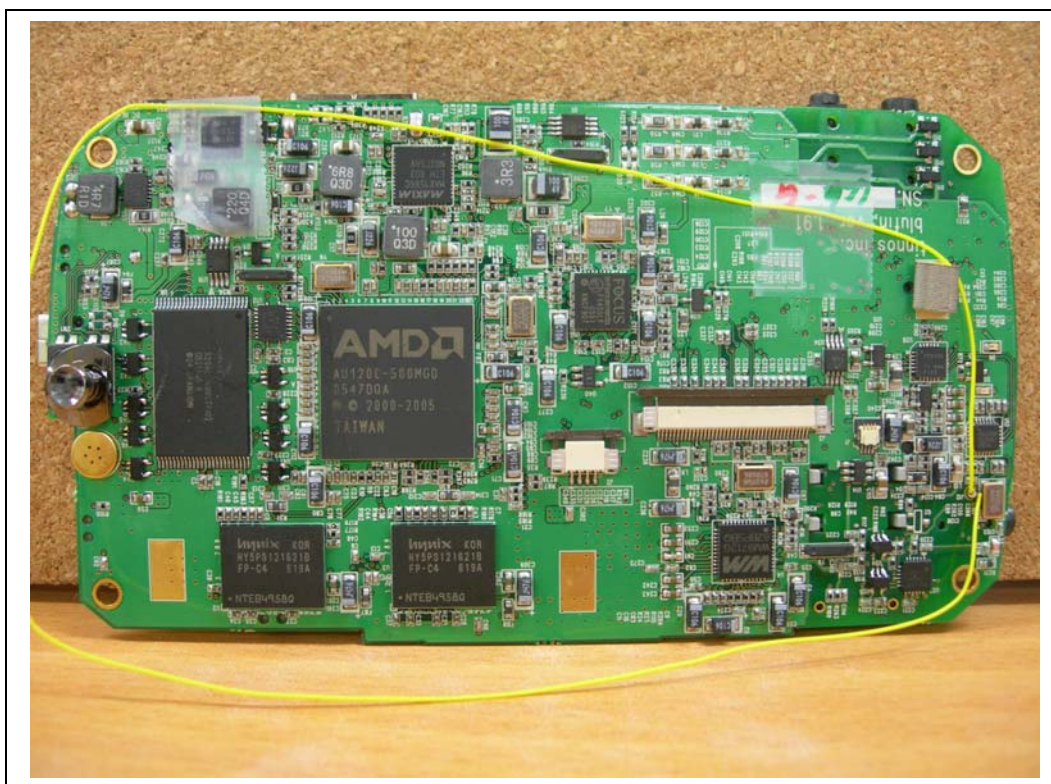


Internal photos



Main board



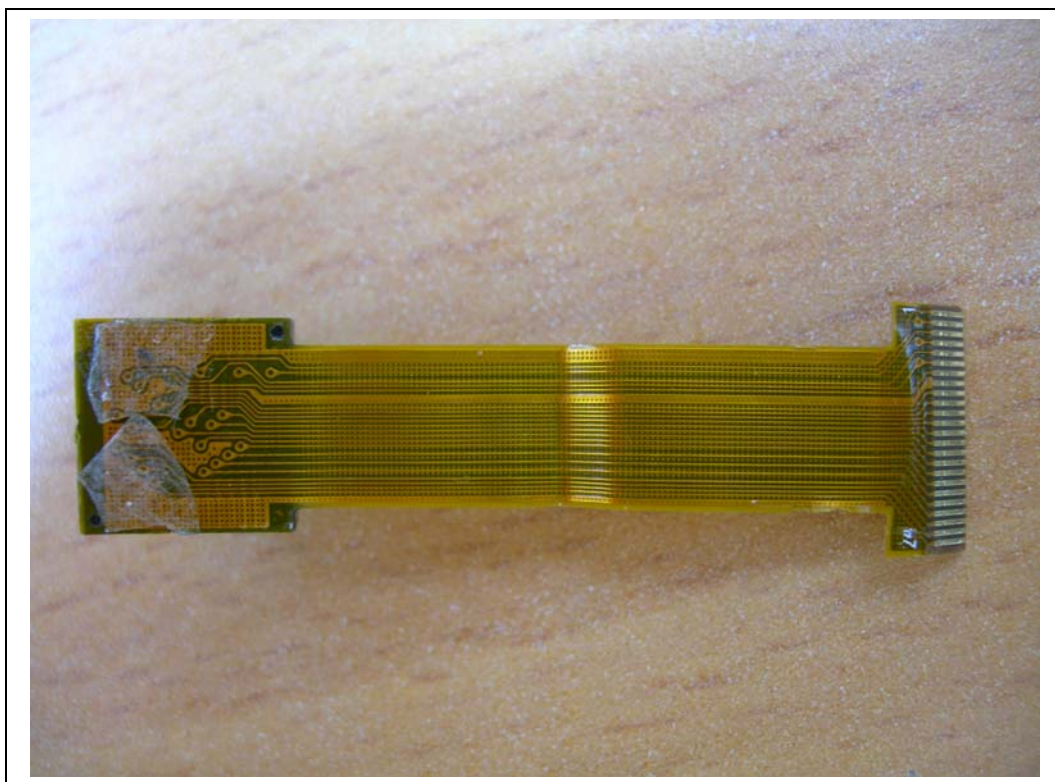
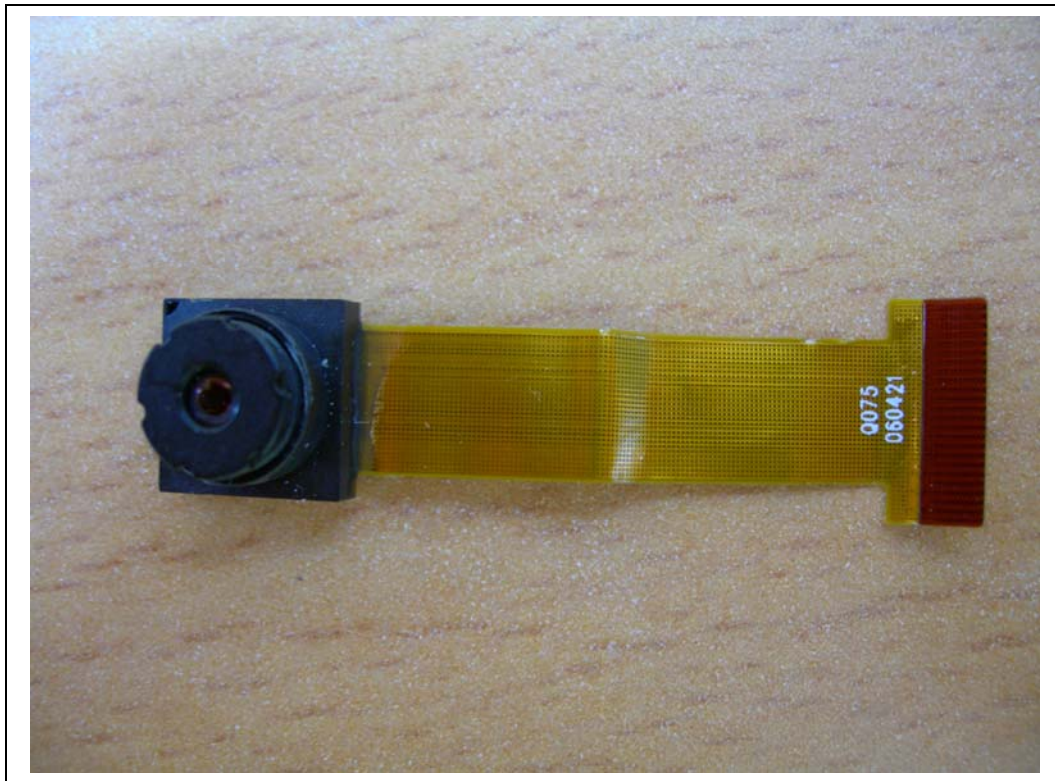
EMC Compliance Ltd.

82-1 JEIL-RI, YANGJI-MYUN, YONGIN-CITY, KYUNGGI-DO 449-825, KOREA

TEL: 82 31 336 9919 FAX : 82 31 336 4767

This test report shall not be reproduced except in full, Without the written approval

Camera Module

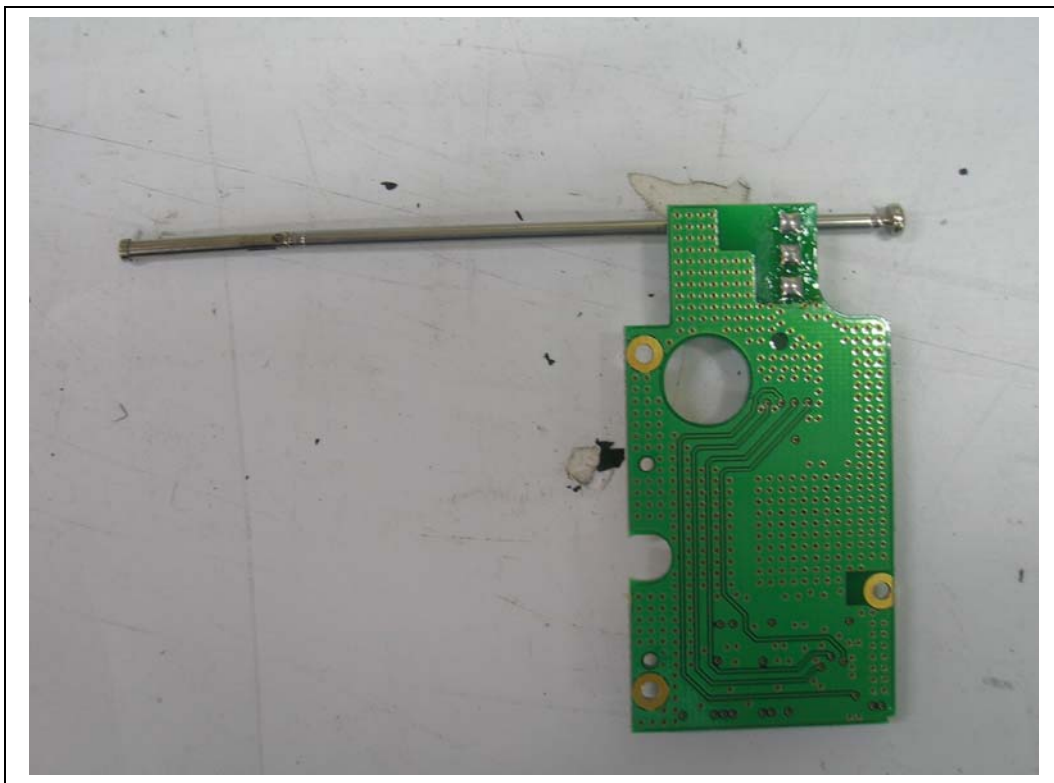
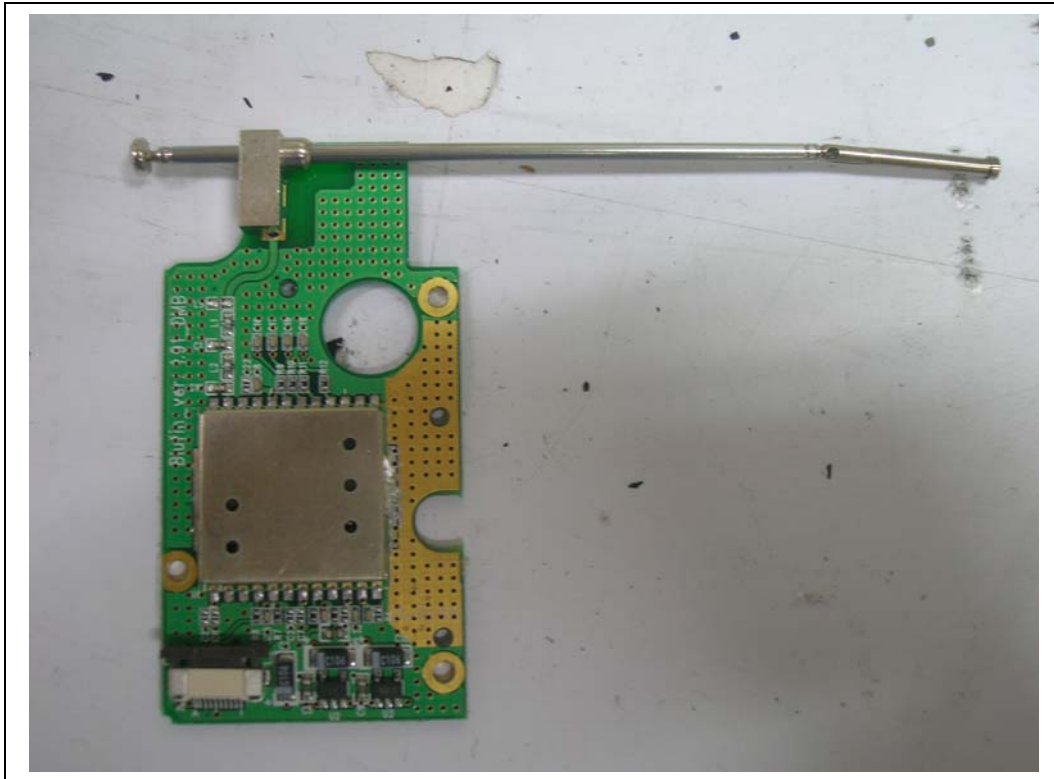


EMC Compliance Ltd.

82-1 JEIL-RI, YANGJI-MYUN, YONGIN-CITY, KYUNGGI-DO 449-825, KOREA
TEL: 82 31 336 9919 FAX : 82 31 336 4767

This test report shall not be reproduced except in full, Without the written approval

DMB



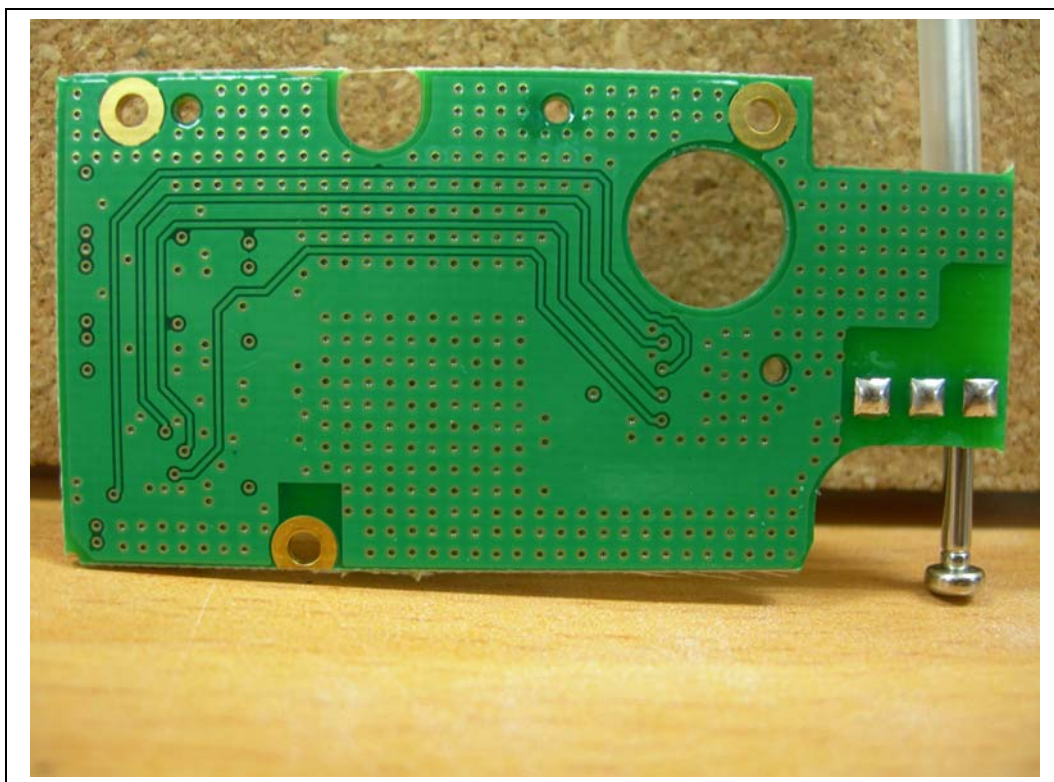
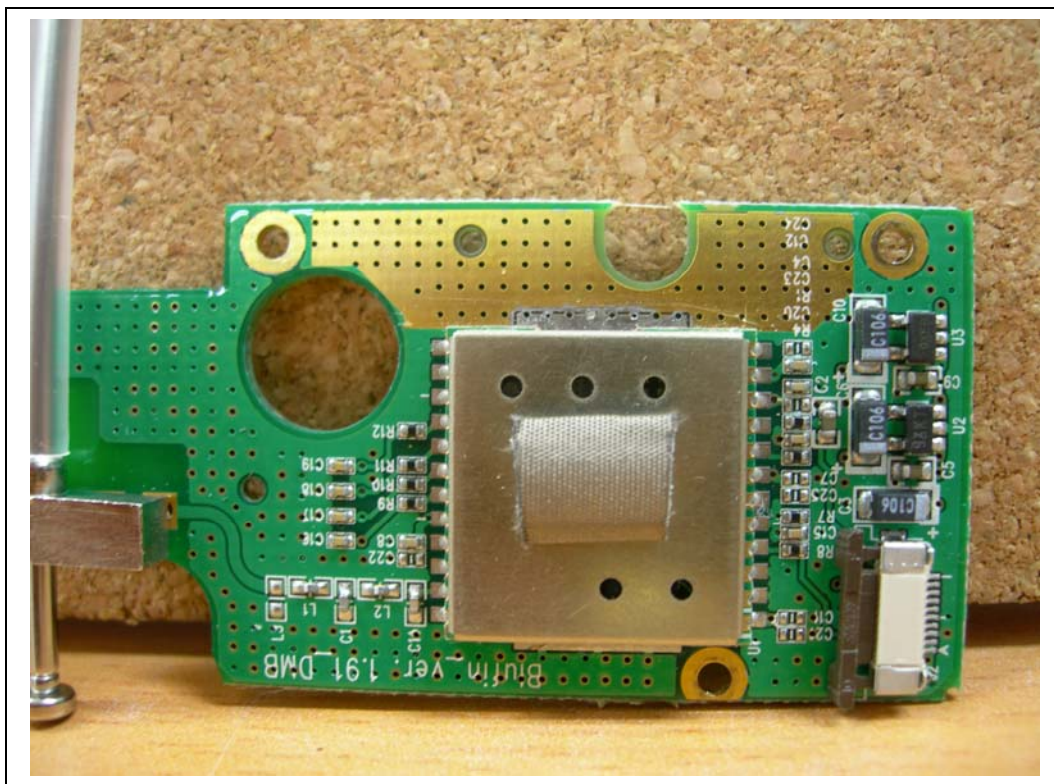
EMC Compliance Ltd.

82-1 JEIL-RI, YANGJI-MYUN, YONGIN-CITY, KYUNGGI-DO 449-825, KOREA

TEL: 82 31 336 9919 FAX : 82 31 336 4767

This test report shall not be reproduced except in full, Without the written approval

DMB Module

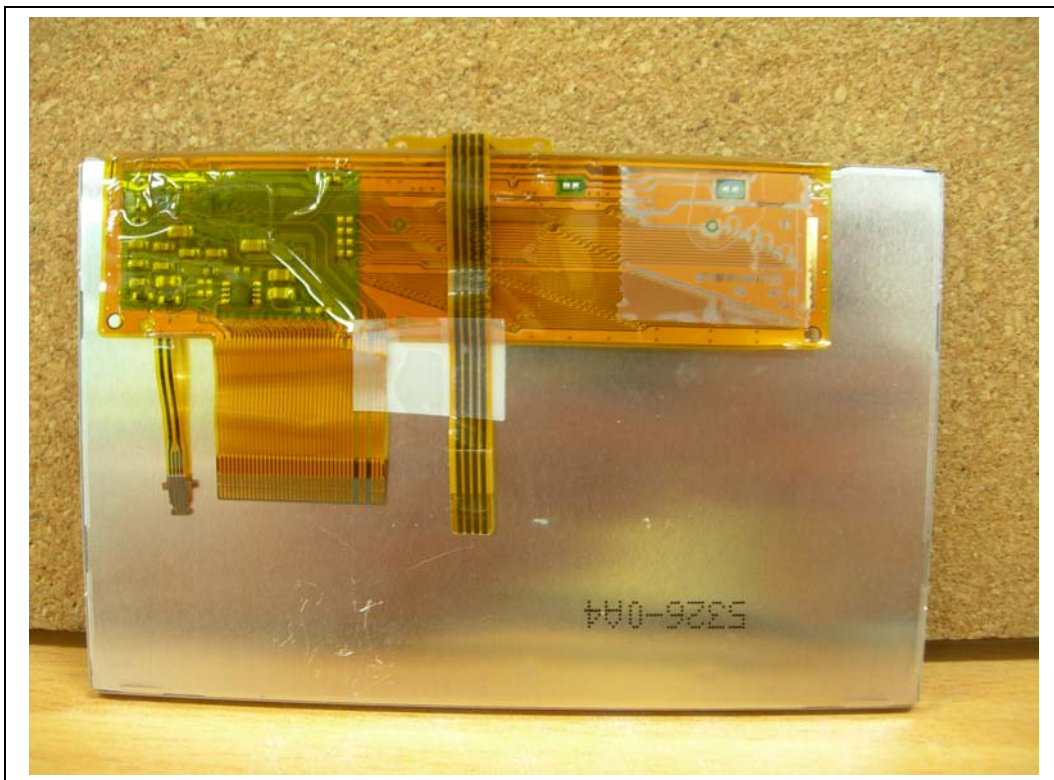


EMC Compliance Ltd.

82-1 JEIL-RI, YANGJI-MYUN, YONGIN-CITY, KYUNGGI-DO 449-825, KOREA
TEL: 82 31 336 9919 FAX: 82 31 336 4767

This test report shall not be reproduced except in full, Without the written approval

LCD

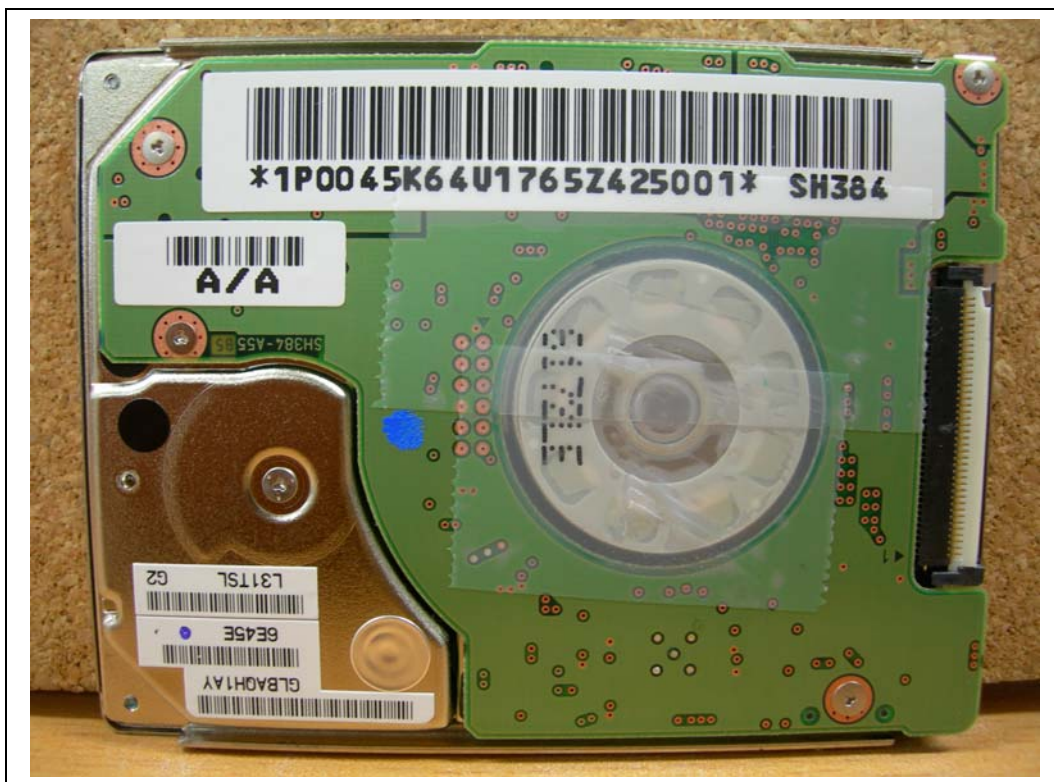


EMC Compliance Ltd.

82-1 JEIL-RI, YANGJI-MYUN, YONGIN-CITY, KYUNGGI-DO 449-825, KOREA
TEL: 82 31 336 9919 FAX : 82 31 336 4767

This test report shall not be reproduced except in full, Without the written approval

HDD



EMC Compliance Ltd.

82-1 JEIL-RI, YANGJI-MYUN, YONGIN-CITY, KYUNGGI-DO 449-825, KOREA
TEL: 82 31 336 9919 FAX: 82 31 336 4767

This test report shall not be reproduced except in full, Without the written approval