



blufin

User's Guide

TINNO

FCC Statements

* CAUTION : Changes or modifications not expressly approved by the party responsible for compliance could void the user's authority to operate the equipment.

* NOTE : This equipment has been tested and found to comply with the limit for a Class B digital device, pursuant to Part 15 of the FCC Rules.

These limits are designed to provide reasonable protection against harmful interference in a residential installation. This equipment generates, uses and can radiate radio frequency energy and, if not installed and used in accordance with the instructions, may cause harmful interference to radio communications.

However, there is no guarantee that interference will not occur in a particular installation, which can be determined by turning the equipment off and on, the user is encouraged to try to correct the interference by one or more of the following measures:

- Reorient or relocate the receiving antenna.
- Increase the separation between the equipment and receiver.
- Connect the equipment into an outlet on a circuit different from that to which the receiver is connected.
- Consult the dealer or an experienced radio/TV technician for help

Safety Precautions

For security purposes and to prevent damage, please read the following safety instructions carefully.

Warning

Failing to follow the instructions marked with this symbol, may cause personal injury and even fatality.

Caution

Failing to follow the instructions marked with this symbol, may cause slight injury to yourself or damage to the product.

Warning

Installation Related

- **Do not install the product in places exposed to humidity such as bathrooms.**
There is a danger of electric shock. Use the product within the operating conditions specified in the User Guide.
- **Keep the plastic bags out of reach of children.**
There is a danger of suffocation.

Power Related

- **Do not touch the power cord when hands are wet.**
There is a danger of electric shock.
- **Take care not to exceed the standard capacity (voltage/current) of a multi-tap or power outlet extension when using it for the product.**
Electric leakage may cause electric shock or fire.
- **If the power cord or power outlet makes a noise, disconnect the power cord from the wall outlet and contact a service center.**
There is a danger of electric shock or fire.
- **Do not use a damaged or loose power cord or power outlet.**
There is a danger of electric shock or fire.
- **Plug the power cord into the power outlet firmly.**
Failing to do so may cause fire.
- **Do not unplug the power cord by pulling the cable.**
If the cord is damaged, this may cause electric shock.

- **Do not bend the power cord excessively or do not place a heavy object over the power cord. Keep the power cord out of reach of infants and pets.**

If the cord is damaged, this may cause electric shock or fire.

- **Use a wall outlet or multi-tap with a grounding port.**

Otherwise, there is a danger of electric shock.

- **If water or another substance flows into the power input jack or into the blufin, disconnect the power cord and contact the service center.**

Damage to the device within the blufin may cause electric shock or fire.

- **Keep the power cord and power outlet clean.**

There is a danger of fire.

Use Related

- **Do not place a cup or container filled with water or chemicals over or near the blufin.**

If water or chemicals flow into the blufin, it may cause fire or electric shock.

- **When dropping the blufin or the blufin is broken, disconnect the power cord and contact a service center for a safety check.**

If you use a broken blufin, there is a danger of electric shock or fire.

- **Avoid direct sunlight when it is in an air-tight location such as inside a vehicle.**

The blufin may become deformed or fire may be caused by high temperatures.

- **Do not scratch the surface of the LCD with a sharp object such as a knife.**

Upgrade Related

- **Never disassemble the power supply or AC adapter.**

There is a danger of electric shock.

- **Use only authorized parts (multi-bay, battery and memory) and never disassemble parts.**

There is a danger of damage to the product, electric shock or fire.

Custody and Movement Related

- **Follow the instructions of the relevant location (e.g. airplane, hospital, etc.) when using a wireless communication device (wireless LAN, Bluetooth, etc.).**

Caution

Installation Related

- **Do not block the ports, vents, etc. of the product and take care not to insert alien substances into the product.**
Damage to the device within the blufin may cause electric shock or fire.
- **Do not place a heavy object over the product.**
This may cause a problem with the blufin. In addition, the object may fall and cause injury or damage the blufin.

Battery Use Related

- **Dispose of worn-out batteries properly.**
Failing to do so may cause fire or an explosion. Follow the proper disposal method relevant to your region. The battery disposal method may differ depending on your location. Dispose of the used battery in the appropriate way.
- **Do not throw or disassemble the battery.**
This may cause injury, fire or an explosion.
- **Use only batteries authorized by Samsung Electronics.**
Otherwise, there is a danger of an explosion.
- **Avoid contact with metal objects such as car keys or clips when storing or carrying a battery.**
Contact with a metal part may cause an excessive current and a high temperature. It may damage the battery or cause fire.
- **Change the battery according to the instructions in the manual.**
Otherwise, the product might be damaged.
- **Do not place the battery into a fire or heat it.**
There is a danger of fire or explosion.

Use Related

- **Do not place a candle, lighted cigar, etc. over the product.**
There is a danger of fire.
- **Make sure to test the product for safety by a service engineer after repairing the product.**
Using a repaired product without testing it for safety might cause electric shock or fire.
- **In case of lightning, immediately turn the system off and disconnect the power cord from the wall outlet.**

There is a danger of electric shock or fire.

- **Connect only permitted devices to the connectors or ports of the blufin.**

Otherwise, it may cause electric shock or fire.

- **When using the blufin for a long time, there may be an odd smell.**

Ventilate the room frequently and use the blufin carefully.

- **Do not press the Eject Button while the CD-ROM drive is operating.**

You might lose data. The disk may suddenly eject and this may cause injury.

- **When using a walkie-talkie, please keep the distance between the walkie-talkie and the blufin at least at 1m.**

Since a walkie-talkie's transmission power is very high, this may cause a blufin malfunction.

- **Avoid dropping the product while using it.**

– Dropping the product may damage the product or cause data loss.

– Take care not to drop the product when using the blufin on the stand.

- **Do not touch the antenna and power outlet.**

There is a danger of electric shock.

Upgrade Related

- **Take care when touching the product or parts.**

The device may be damaged or cause injury.

- **Take care not to drop any blufin part or device.**

Dropping a device or part may cause injury or damage to the product.

- **Use parts authorized by tinnos, Inc. only.**

Otherwise, there is a danger of fire or damage to the product.

- **To connect a device that is not manufactured or authorized by tinnos, Inc, ask at a service center before connecting the device.**

Otherwise, there is a danger of damage to the product.

Custody and Movement Related

- **When moving the product, turn the power off and separate all connected cables first.**

Otherwise, the product might be damaged or users may trip over the cables.

- **Keep the Stylus Pen out of reach of children.**

Children may injure themselves by swallowing it or damaging their eyes.

- **Use a blufin cleansing solution when cleaning the product.**

Using a cleansing solution or chemical that is not developed for a blufin may damage the product.

- **Do not use or watch the blufin while driving a vehicle.**

This may cause a traffic accident. Concentrate on driving.

Avoiding Data Loss (HDD Management)

- **Take care to not damage the data on a hard disk drive.**

- A hard disk drive is extremely sensitive to external impact that any external impact may cause data loss on the surface of the disk.
- The company is not liable to any loss of user data due to a user's carelessness or any external impact.

- **Causes that may damage the data of a hard disk drive.**

- The data may be lost when there is an external impact to the disk while disassembling or assembling the blufin.
- Data may be lost when the blufin is turned off or reset by a power failure while the hard disk drive is in operation.
- Data may be lost if the power is turned off while running a program.
- Moving the blufin or any impact caused to it while the hard disk drive is in operation, may damage the data on the hard disk drive.

To prevent data loss due to damage to the hard disk drive, please backup your data frequently.

Proper Posture During Blufin Use

Maintaining a proper posture while using the blufin is very important for avoiding physical discomfort or even harm.

The following instructions are about keeping the proper posture during blufin use developed through human engineering. Please read and follow them carefully when using the blufin.

Otherwise, the probability of (RSI: Repetitive Strain Injury) through repeated operations may increase and serious physical bodily harm may be caused.

If users are not included in the coverage, the

recommendations are to be applied according to the user's needs.

Proper Posture

- Do not use the blufin on your lap or close to your skin for a long time.

There is a danger of burns due to the high temperature of the blufin.

- To use the blufin while talking over the telephone, use the ear-microphone phone. When using the blufin while holding a phone over your shoulder and talking on the phone, your posture becomes bad.

Eye Position

Keep a distance of at least 50cm between the LCD and your eyes.

- Adjust the height of the LCD screen so that its top height is equal to or lower than your eyes.
- Avoid setting the LCD excessively bright.
- Keep the LCD screen clean.
- When wearing glasses, clean them before using the blufin.

Hand Position

- It is recommended to connect and use an external keyboard and mouse when using the blufin for a long time.
- Do not hold the Stylus Pen with excessive force.
- Do not press the touch screen with excessive force.

Volume Control (Headphone and Speaker)

Check the volume level before listening to music.

- Check if the volume level is too high before using headphones.
- Do not set the volume to the maximum from the beginning. Set the volume low and find a comfortable level while turning it up.
- Do not use the headphones for long periods of time.

Use Time (Break Time)

- When working for more than one hour, take a 10 minute break after every 50 minutes of work.
- Using this blufin for two hours or less a day is recommended.

Illumination

- Do not use the blufin in a dark location. The

illumination level for blufin use must be bright so that you can read a book.

- Indirect illumination is recommended. Use a curtain to prevent the reflection of the LCD screen.

Operating Conditions

- Do not use the blufin in hot and humid locations.
- Use the blufin within the allowed temperature and humidity ranges specified in the User Guide.

Using the Battery

Please refer to the following instructions when running the blufin on battery power, without connecting the AC power. A Lithium-Ion smart battery is supplied with this blufin.

Before You Start!

Carefully read and follow the precautions printed on the battery before using the battery.

Precautions

- Use only charges specified in the user's guide.
- Never heat the battery pack, put it near or in a fire or use at a temperature higher than 60°C, as this may cause fire.
- Never cause a short circuit between the battery pack terminals or disassemble the battery pack.
- Carefully read and follow the precautions printed on the battery and the safety instructions in the user's guide before using the battery.
- Please refer to the system operation environment of this manual and operate and the store the battery at room temperature.

Removing and Attaching Battery

- 1 Shutdown the system and place the blufin upside down on a flat surface.
- 2 Pull the two battery latches outwards (), then remove the battery.
- 3 To install the battery again, slide the battery into the system. The battery latches move inwards and fix the battery automatically. Check if the battery latch has been moved inwards.

Charging the Battery

- 1 Attach the battery and connect the AC adapter to the DC-in jack of the blufin.

The battery will then be charged.

2 When a charge is complete, the Charge LED turns green.

Battery Warning

- You will hear an alarm when the remaining battery charge reaches below 10%.

In this case, connect the AC adapter or turn off the blufin and install a fully charged battery.

- When the remaining battery charge is under 3%, the blufin automatically saves the current work and turns off.

Using the Battery

A battery is an expendable supply, so when using it for a long time, the capacity/battery life is shortened. If the battery life is reduced to under half of the initial time, we recommend that you purchase a new battery.

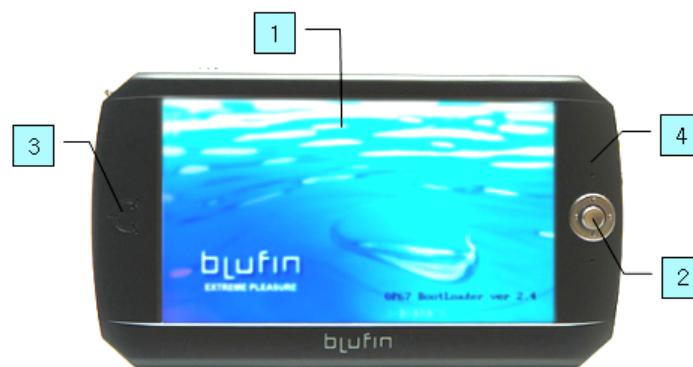
For long periods of not using the battery, keep the battery after discharging it. This extends the battery life time.

Getting Started Overview

Before You Start!

The actual appearance and color of the contents may differ from the pictures used in the material.

Front View / Status Indicators

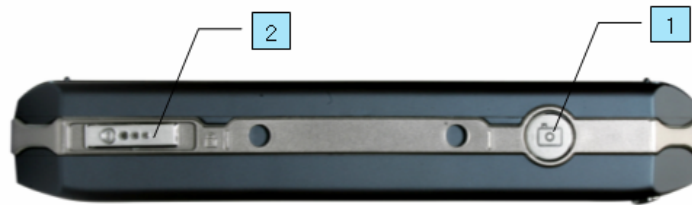


1. **LCD** The screen images from the blufin are displayed here.
2. **Jog Shuttle** Plays the same role as the direction keys (← , → , ↑ , ↓) on the keyboard. Used as a joystick when playing games and selecting menu.
3. **Status Indicators** Shows the charging

status of the blufin. The corresponding operating LED is lit when the charging function operates.

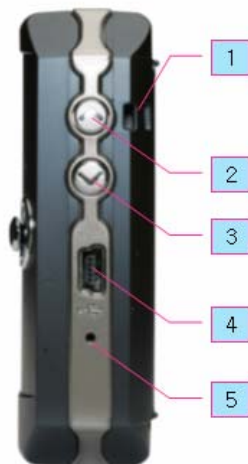
4. **Array Microphone** Used to record sound.

Top View



1. **Camera Shutter** You can take a picture or short films pressing this button through 200 Mega Pixel Digital Camera installed in the blufin.
2. **Power Switch** You can turn the blufin on or off by sliding this switch to the left and releasing it and by sliding this switch to the right the blufin is turned off.

Right View



1. **Hand Strap Hole** You can connect the Hand Strap here.
2. **Volume Up Control Button** A button used to control the volume up.
3. **Volume Down Control Button** A button used to control the volume down.
4. **USB Port** A port used to connect a USB device such as a USB keyboard, mouse, USB ODD, etc.
5. **Reset Button** A button used to reset the blufin.



Left View

1. **Headphone Jack** A jack used to connect the headphones.
2. **SD Card Slot** A SD card slot is provided so that you can use SD cards. A SD card is a removable storage device that can be used to exchange data with digital devices such as a PDA, etc. conveniently.

Rear View



1. **2.0 Mega Pixel Digital Camera** You can take pictures or use it as Camcorder.
2. **T-DMB Antenna** It receives Terrestrial Digital Multimedia Broadcasting Waves so that you can watch Korean T-DMB on the screen of blufin.
3. **Speaker** Used to generate sound.
4. **Battery Latch** The latch used to remove or install the battery.
5. **Battery** A Lithium Ion rechargeable battery which supplies power to the blufin.

Quick Manual

Turning the Blufin On and Off

To turn on the blufin



- 1 Install the **battery** and connect the **AC adapter**.
- 2 Adjust the **stand** at the back of the blufin to a comfortable angle.
- 3 Slide the **Power Switch** to the left, hold it for more than **0.1 seconds** and then release it. The blufin is turned on.

To turn off the blufin



- 1 Slide the **Power Switch** to the left, hold it for more than **0.1 seconds** and then release it. The blufin is turned off.

When the system cannot be shut down due to a system error, turn it off by sliding and holding the **Power Switch** for more than 4 seconds.

After that, when turning it on by sliding the Power Switch, the disk checking program may launch.

Using the blufin

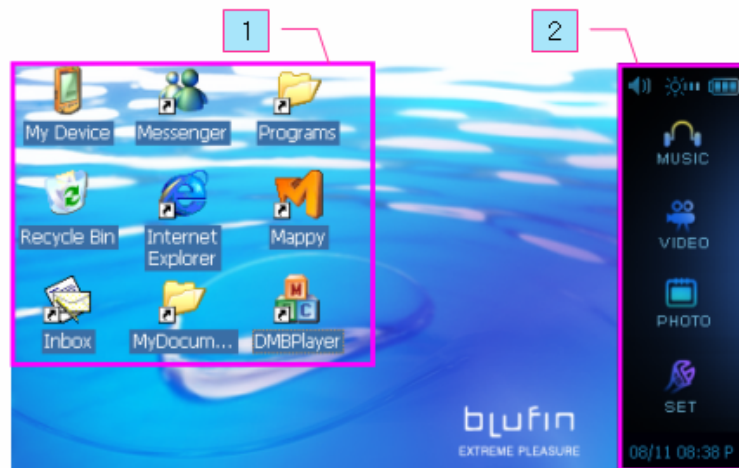
Program Launcher

The Program Launcher categorizes frequently used programs, folders so that you can easily manage and access them.

This program is designed for the small LCD size so that you can easily use this program with the Stylus Pen or your fingers.

Program Launcher Screen Layout

Screen Layout



1 Win CE Part Categories frequently used programs, folders so that you can easily manage and access them.

2 blufin Quick Launcher Shortcuts that you can easily access each functions with control panel of volume and screen brightness.

MUSIC You can play a music file.

VIDEO You can play a video, movie file.

PHOTO You can view a photograph or image file one by one or in a Slide-Show.

Set You can set the blufin function settings.

Volume Control

You can control the volume with the Volume Control button or Volume Control program.

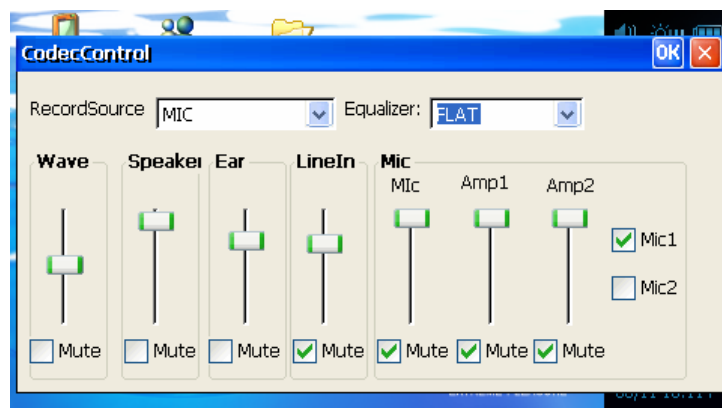
Using the Volume Control with the Volume Control Button

Click the **Volume Control Icon** on the task bar to turn up or down the volume.



Using the Volume Control with the Volume Control Program

Double Click on the **Volume** icon on the taskbar and adjust the master volume control.



Using Program Launcher

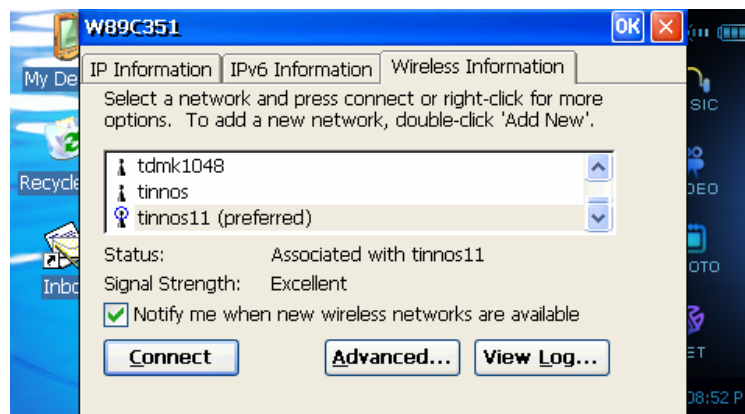
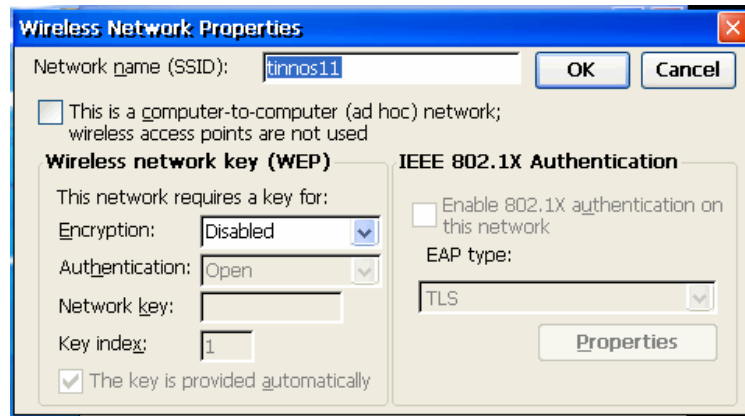
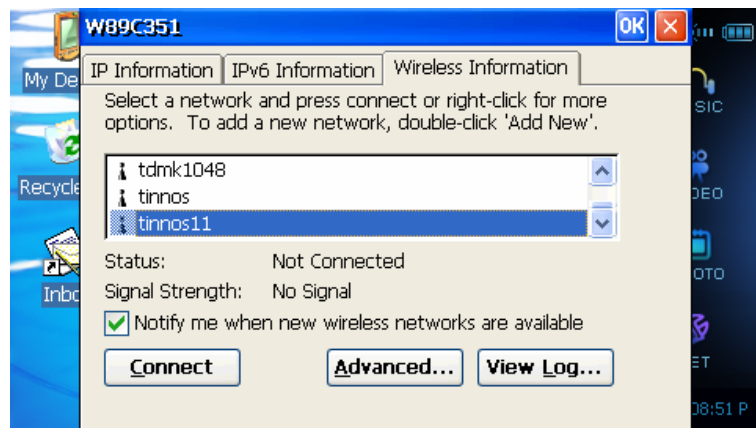
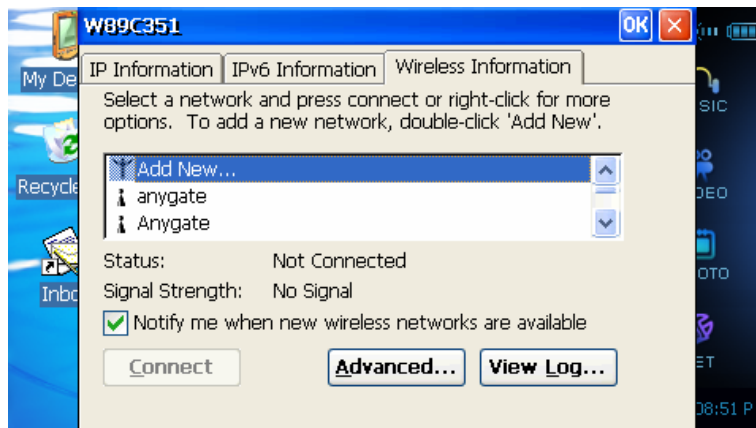
For example, the procedures to launch the **Internet Explorer** on the Program Launcher are described below.

- 1 Connect A wireless LAN card to the USB port of blufin.
- 2 Touch the Internet Explorer Icon. The Internet Explorer program is launched.

To use a wireless LAN, first connect to a wireless LAN AP and then you can access the network even when moving location. Or moving location and then you can access the network even when connecting to a wireless LAN AP.

1. Click **Internet Explorer Icon** on the Win CE Part of Launcher and click **View Available Wireless Networks**.
2. Click **Search AP** from the **Wireless** menu to search for wireless LAN APs.
3. Select an available wireless network and click the **Connect** button. For information on available wireless LAN APs, ask your network administrator.
4. The network key (security key) input window appears.
 - If a network key has been set for the wireless LAN AP, enter the network key and click the **Connect** button. For the network key information, ask your network administrator.
 - If no network key has been set for the wireless LAN AP, click the **Connect** button without entering the network key.





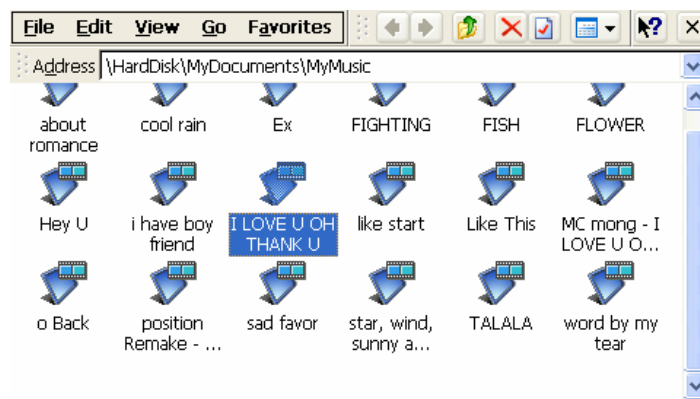
Playing a Music File

If a music file is registered to the **My MUSIC** folder, you can easily play the music file.

- 1 Click **MUSIC** Icon on the side launcher.
- 2 Double-click a music file.



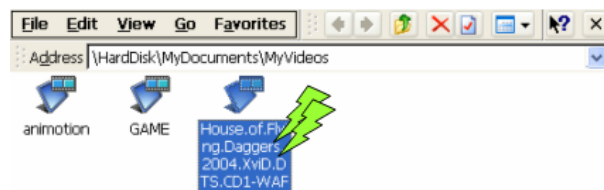
]



Playing a Movie(Video) File

The procedures to play a video file registered to the **My VIDEO** folder are described below.

- 1 Click **VIDEO** Icon on the side launcher.
- 2 Double-click a video file selected in the My Videos Folder. The file is played.
- 3 Click the Icon of **bluPlayer Launcher** on an image to control the playing files.

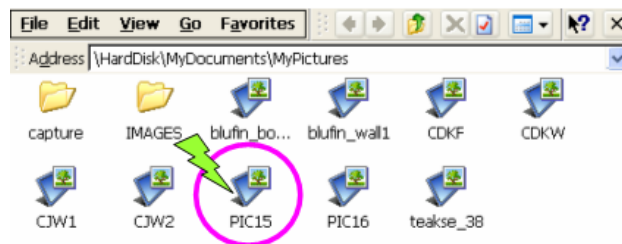




Viewing an Image

The procedures to view images registered to the **My Picture** folder one by one and through a Slide-Show are described below.

- 1 Click **PHOTO** Icon on the side launcher.
- 2 Double Click on a folder which includes images, and the images in the folder are displayed in the Image Viewer window.
- 3 Click the Icon of **bluSee Launcher** on an image to control the viewing images.



bluSee Launcher Function Icon

