

CDMA FIXED WIRELESS TERMINAL



CDMA FIXED WIRELESS TERMINAL

TABLE OF CONTENTS

Chapter 1 Precautions	
1.1 Basic Cautions	3
1.2 Security Cautions	3
1.3 Installation Cautions	6
1.4 Maintenance	6
Chapter 2 Introduction	
2.1 Packing List	8
2.2 Product Features	9
Chapter 3 Function Description	
3.1 Display and Operating Elements	11
3.1.1 FWT Front View and Description	11
3.1.2 FWT Back View and Description	13
3.1.3 FWT Side View and Description	14
3.2 Display Screen Description	15
3.2.1 Standby State	15
Chapter 4 Installation Description	
4.1 External Power Adapter Installation	16
4.2 Spare Battery Detachment/Installation	16
4.3 Connecting the FWT to a PC	18
4.3.1 Connecting the FWT to a PC through a Serial Communication Cable	19
4.4 Antenna and feeder	19
4.4.1 Indoor Omni Antenna	20
4.5 Mounting Mode	20

TABLE OF CONTENTS

4.5.1 Horizontal Mode	20
4.5.2 Wall Mounting Mode	20
Chapter 5 Basic Operations	
5.1 Contacts	22
5.2 Messages	24
5.3 Call records	26
5.4 Tools	28
5.5 Settings	29
5.6 Additional function	36
5.7 Maintenance	36
Chapter 6 troubleshooting	38
Chapter 6 technical specification	40
Chapter 7 Configuration	41
7.1 Computer Configuration	41
7.2 Configure FWP	49
Chapter 8 FCC statement	50
8.1 FCC statement	50

CHAPTER 1 PRECAUTIONS

To use the Fixed Wireless Terminal (hereinafter referred to as the FWT) accurately, efficiently and securely, you should notice the following cautions.

1.1 Basic Cautions

- 1) Check fittings based on the packing list to make sure they are complete and undamaged.
- 2) Read this manual carefully before installing and using the FWT.

1.2 Security Cautions

- 1) Before cleaning the FWT, please turn off the FWT, and then disconnect the external power adapter and take out the Battery. Before moving the FWT, please disconnect the external power adapter.
- 2) When lightning, if you use the power adapter, please turn off the FWT and disconnect the power adapter from external power supply. If outdoor antenna is used, please turn off the FWT and do not touch the interface between FWT and antenna.
- 3) Do not open the chassis in normal condition. The device should be maintained by a qualified maintenance department.
- 4) Do select its self-contained complete battery and power adapter. Otherwise, the FWT may be damaged.

CHAPTER 1 PRECAUTIONS

5) Disconnect the external power adapter and take out the spare battery when the FWT is not used for a long time.

6) Without permission, users are not allowed to modify the architecture and security design of the FWT. Otherwise, users must bear any consequence resulted from the operation.

7) Battery

- If the battery fluid gets into the eyes, do not rub them. Wash with clean water and seek medical assistance immediately.
- If the battery fluid contacts skin or cloth, wash with clean water immediately to avoid irritation to the skin.
- Do not dispose of the battery in fire. Otherwise, the battery may ignite or explode.
- When installing the battery on your FWT, do not push the battery by force lest the battery fluid leak out or the battery crack.
- Do not connect two poles of the battery with metallic materials such as cables.
- Do not disassemble the battery or solder the battery poles. Otherwise, fluid leakage, overheat, fire or explosion may result.
- If there is battery leakage, smoke, or strange smell, stop using the battery and keep it away from open flame to avoid fire or explosion.
- Disconnect the power adapter and take out the spare battery when FWT is not used for a long time.

CHAPTER 1 PRECAUTIONS

- Do select its self-contained complete battery and power adapter, otherwise, FWT may be spoiled. Dispose of used batteries according to the instructions.
- Dispose of the battery according to local laws or regulations.

8) Power adapter

- Use AC power as specified for the power adapter. Any violation of this rule may result in fire or malfunction of the power adapter.
- Do not short-circuit the power adapter. Short-circuiting the power adapter may cause fire or malfunction of the power adapter.
- Remove the dust on the power plug regularly.
- Do not use worn-out power cords. Otherwise, electric shock, short-circuiting of the power adapter or fire may result.
- Do not put the power adapter near the container filled with liquid such as water. If the liquid comes into the power adapter, electrical leakage or other faults may result.
- If the liquid such as water comes into the power adapter accidentally remove the plug of the power adapter from the socket immediately.
- Disconnect the power adapter from the socket before cleaning or maintaining it. Otherwise, electric shock or short-circuit of the battery or the power adapter may result.
- Ensure the plug of the power adapter is properly inserted into the power socket when charging the battery. Improper insertion may result in electric shock, fire or explosion.

CHAPTER 1 PRECAUTIONS

- Do not place any heavy objects on the power cord of the power adapter. Do not damage, change, or pluck the power cord.

1.3 Installation Cautions

- 1) Put the main unit and the power supply in a ventilated, shadowy and cool place. Never airproof the FWT or put some articles on it or place it.
- 2) Put it in a dry place and do not expose it to moisture.
- 3) A working FWT may affect other electronic devices, such as TV set and radio, so you are recommended to place it away from these devices.
- 4) Place the FWT in a place where it can receive network signal well. Do not put the FWT in a building with an iron or metal roof. The distance between the FWT and other metal materials (such as metal brackets or metal doors and windows) should be greater than 25cm and the distance between FWT should be greater than 30cm.

1.4 Maintenance

- 1) Keep the FWT and its accessories away from children.
- 2) The FWT should be deployed in a clean and dry environment. A temperature higher than 55°C or lower than -10°C maybe

CHAPTER 1 PRECAUTIONS

damages the FWT. If the FWT is covered with dust, please clean it with clean fine cloth. Be sure not to clean dust with cleaner or other chemical solvents.

3) Remove the battery from the FWT if you do not use the FWT for a long time.

4) If the FWT does not operate normally due to a failed battery, please replace the battery in time or power on the FWT through a power adapter. Contact the carrier in time if the FWT cannot work normally.

CHAPTER 2 INTRODUCTION

2.1 Packing List

The whole FWT fittings are listed in Table 2-1. Check the fittings packed in the box according to the table to make sure they are complete and undamaged. Otherwise, contact the local vendor immediately.

Table 2-1 Packing list

Name	Quantity	Unit
Main unit, handset, spiral cord	1	Set
Power adapter	1	Pcs
User Manual	1	Pcs
Antenna	1	Pcs

2.2 Product Features

Table 2-2 Product function table

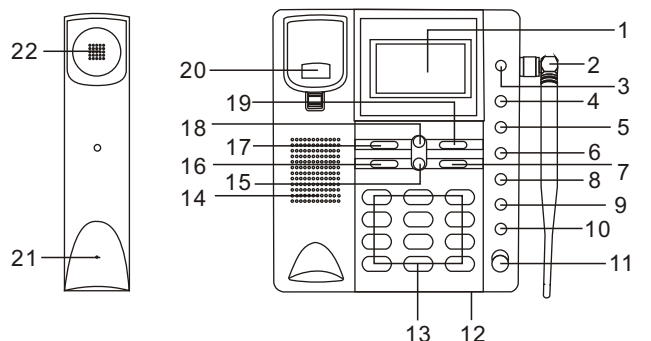
Functions	Remark
Voice Calls	Support caller ID for incoming calls
Call Barring	Outgoing calls/Incoming calls
Contact	Store up to 100 entries in phone memory
Recent Calls	Records for incoming calls, outgoing calls, and missed calls
Phone Setting	Sounds, Display, Security, Network, Language, Call Forward, Call Waiting
Tool Box	Schedule, Alarm Clock
Phone Status	Display Software Versions and etc
Message	Sending/Receiving SMS
Battery Management	Battery Charging, Battery Level Indication
AT Commands	Standard
CDMA 1X Data Service	Up to 153.6kbps

Note:

- For the details about supplementary services offered by the FWT, inquire to the carrier.
- Charging function needs the support of the carrier's network. Please consult the carrier.
- To enjoy the data service provided by the FWT, you need purchase the data service suite, please consult the local vendor.

3.1 Display and Operating Elements

3.1.1 FWT Front View and Description



- | | | |
|------------|----------------|-----------------|
| 1. LCD | 9. EXIT | 16. /OK |
| 2. ANTENNA | 10. SEND | 17. MENU/SELECT |
| 3. POWER | 11. H.F | 18. UP |
| 4. LOG | 12. H.F MIC | 19. BACK/DEL |
| 5. LOG | 13. NUMBER KEY | 20. HOOK KNOB |
| 6. MESSAGE | 14. SPEAKER | 21. HANDSET MIC |
| 7. | 15. DOWN | 22. RECEIVER |
| 8. MUTE | | |

/OK Key Press this key to confirm when **OK** appear on bottom left in screen display. Press this key to move cursor left and select the letter you want during writing message.

Key Press this key to back to previous menu during operating menu; Press this key to move cursor right and select the letter you want during writing message; Press this key to enter phone book and move cursor up and down in standby mode .

MENU/SELECT Key Press this key to enter main menu in standby state; Press this key to enter next sub-menu or confirm when **SELECT** appear on bottom left in screen display.

BACK/DEL Key Press this key to delete during writing message or dialing; Press this key to end the call when conversation .

SEND Key Press this key to send number after finishing dialing; Press this key to redial the last number in standby state.

MUTE Key Press this key to mute during talking and press this key again to cancel mute; Press this key to enter no disturb state and press this key to cancel no disturb function in standby state .

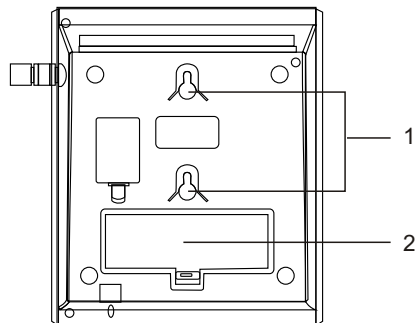
H.F Key Press this key to dial or answer a call through handsfree mode in standby state.

0~9 * # Number Key Key in numerical symbol and message content through these keys.

CHAPTER 3 FUNCTION DESCRIPTION

3.1.2 FWT Back View and Description

Figure 3-2 shows the FWT type that is fixedly installed with the indoor antenna.



1) Hook 2) Spare battery case

Figure 3-2 FWT back view

I. Hook

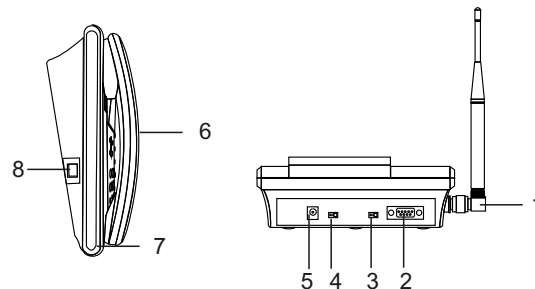
It is used when the FWT is installed vertically.

II. Spare battery case

Spare battery should be placed in it.

CHAPTER 3 FUNCTION DESCRIPTION

3.1.3 FWT Side View and Description



- | | |
|-----------------------------|-------------------------------|
| 1) Antenna | 2) DB9 serial port |
| 3) DATA & DOWNLOAD Switch | 4) Power switch |
| 5) Power jack | 6) Handset |
| 7) Handset spiral cord jack | 8) Main unit spiral cord jack |

Figure 3-4 FWT side view

I. Main unit and handset spiral cord jacks

They are used to install the FWT spiral cord.

II. Power jack

It is a DC-input power port, used to connect the FWT with the power adapter.

III. Power switch

It is used to turn on/off the FWT.

CHAPTER 3 FUNCTION DESCRIPTION

IV. DATA & DOWNLOAD Switch

It is used to turn the FWT DATA or DOWNLOAD.

V. DB9 serial port

You can maintain the FWT and realize data services through this port.

3.2 Display Screen Description

3.2.1 Standby State



- | | |
|------------------------------|---------------------|
| 1. Unread message | 6. Missed calls |
| 2. Battery | 7. Main menu |
| 3. Mute | 8. System type |
| 4. Standby mode welcome logo | 9. Roaming |
| 5. System time | 10. Signal strength |
| | 11. Alarm clock |

CHAPTER 4 INSTALLATION DESCRIPTION

4.1 External Power Adapter Installation

The FWT usually adopts the external power adapter to supply power. However, in the event of power cut or no external power adapter, it needs spare battery to supply power and you should make sure the spare battery have been charged full before using.

- 1) Make sure the FWT is turned off.
- 2) Insert one end of the power adapter connection line into the FWT power jack, and plug the other end into the power socket.
The external power adapter installation is finished.

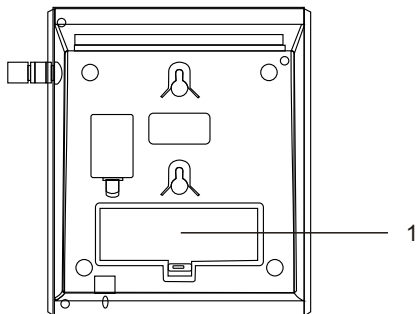
4.2 Spare Battery Detachment/Installation

Note:

Make sure that the spare battery has been charged for more than 8 hours before it supplies power for the FWT at the first time.

Caution:

Before alternating battery for the FWT, you must turn off the FWT and pull out the power adapter. The FWT spare battery can support 3-hour conversation or stand by for 40 hours (reference value, the actual time is associated with the network condition) in the case of no external power supply. Take the following procedures to alternate or detach the spare battery.



1) Spare battery port

Figure 4-1 Spare battery detachment/installation

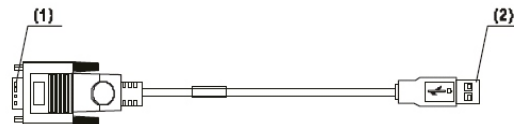
- 1) Make sure the FWT is turned off, and then disconnect the power adapter.
- 2) Open the spare battery case cover.
- 3) When taking out the spare battery, take down the connection line from the spare battery port, shown in Figure 4-1, and then take out the spare battery.
- 4) When installing the new spare battery, insert the line of the spare battery to the port first (pay much attention to the socket direction) and then put in the spare battery.
- 5) Cover the case and fix the tapping screw (optional). Spare battery detachment and installation are finished.

Note:

- While the power adapter is in use, the FWT will automatically charge the battery and will automatically stop charging after the battery is full.
- When the FWT connects with the power adapter, you can charge the battery no matter whether the FWT is turned on or not.

4.3 Connecting the FWT to a PC

The FWT can be connected to a PC to provide data services, maintenance and debugging. To support data services, you should purchase the data service suite, in which you can get USB serial cable as shown in Figure 4-3.



- 1) Cable connector-D type-9 pin-male
- 2) Cable connector-USB-4 pin male

Figure 4-3 USB serial cable

CHAPTER 4 INSTALLATION DESCRIPTION

4.3.1 Connecting the FWT to a PC through a Serial Communication Cable

As shown in Figure 4-5, connect one end of the serial communication cable to a PC, insert the other end to the serial port of the FWT, and fasten the captive screw holding it in place, ensuring that the connection is reliable.

Caution:

To avoid damaging the device when making connection, make sure to turn off the FWT before making connection and use the special serial cable provided by the manufacturer.



Figure 4-5 Connecting the FWT to a PC through a serial communication cable

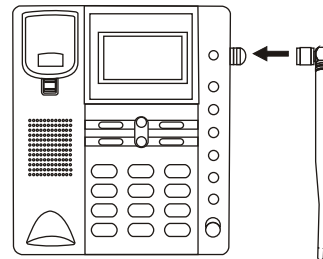
4.4 Antenna and feeder

If you select an FWT that can be installed with indoor, please read the following to learn the information about the antenna and feeder.

CHAPTER 4 INSTALLATION DESCRIPTION

4.4.1 Indoor Omni Antenna

Figure below shows an indoor omni antenna for the FWT :



1. Make sure the FWT power off
2. Connect the antenna to connector on FWT as shown in the figure above, and then tighten the antenna .

4. 5 Mounting Mode

4.5.1 Horizontal Mode

When the FWT is placed horizontally, the place should be flat, shadowy and ventilated to facilitate the FWT to eliminate heat.

4.5.2 Wall Mounting Mode

The FWT can be placed vertically on the wall.

I. Installation preparation

Confirm the handset retaining clip state

Before installation, confirm whether the handset-retaining clip is as the same as shown in Figure 3-1, that is, the bulge is upwards.

CHAPTER 4 INSTALLATION DESCRIPTION

If it is not, pull the button, as shown in Figure 4-14, out of the slot, turn it around and then put it back so that the handset will not fall down when the FWT is placed vertically.

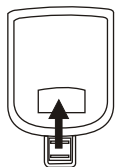


Figure 4-14 Handset retaining clip installation

II. Installation procedure

As shown in Figure 4-16, hammer two nails into the wall based on the distance between the two hooks (about 62.5mm), leave 3mm nails from the wall and then match the installation holes on the back of the FWT with the nails, making sure the FWT is placed steadily.

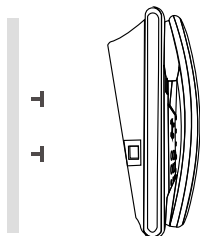


Figure 4-16 FWT vertical placement

CHAPTER 5 BASIC OPERATIONS

5.1 Contacts

You can store recent calls, E-mail and URL, note, etc into contacts, up to 100 entries.

(1) View contacts

View all recent calls, and you can select one entry and edit or delete or call it . See the following steps :

- (i) Press <OK> key to enter main menu .
- (ii) Find [**Contacts**] and press ◀ to enter .
- (iii) Find [**view contacts**], and then press ◀ to enter.

(2) New entry

Add an entry and save it to phone. See the following steps :

- (i) Press <OK> key to enter main menu .
- (ii) Find [**Contacts**] and press ◀ to enter .
- (iii) Find [**New**] over **UP** or **DOWN**, and then press key to enter .
- (iv) Find [**Contacts**], [**e-mail address**], [**Streel address**] , [**website**] [**MEMO**], and press ◀ to enter one of these options. After finish editing, press ◀ to confirm .

(3) Search name

Search the stored number over inputting name, and edit it or delete it or send message, etc.

See the following operating steps:

CHAPTER 5 BASIC OPERATIONS

- (i) Press <OK> key to enter main menu,
- (ii) Find [**Contacts**], then press ← to enter it .
- (iii) Find [**Search name**] over DOWN or UP, then press ← to enter it .
- (iv) Type in name to be searched, press ← to search the name.

(4) Groups

Divide the recent calls into different groups, including family, friends, colleagues, business and classmates .

See the following operating steps :

- (i) Press <OK> key to enter main menu,
- (ii) Find [**Contacts**] , then press ← to enter it .
- (iii) Find [**Groups**] over **UP** or **DOWN** , then press ← to enter it .
- (iv) Groups classifies **family, friends, Colleagues, Business, Classmates**, or **No groups**. Press Up or DOWN to select one of these items. After finish, press ← to enter it and view .

(5) Erase all:

Delete all recent calls

- (i) Press <OK> key to enter main menu,
- (ii) Find [**Contacts**], then press ← to enter it .
- (iii) Find [**Erase all**] over **UP** or **DOWN**, then press ← to confirm and press → to back .

(6) Memory state

Inquire phone memory state .

- (i) Press <OK> key to enter main menu.

CHAPTER 5 BASIC OPERATIONS

- (ii) Find [**Contacts**], then press ← to enter it .
- (iii) Find [**Memory status**] over DOWN or UP, then press ← to confirm.

5.2 Messages

You can edit, read and send message in message menu. Received and sent messages will be stored in inbox and outbox, with up to 60 messages. Besides, you can delete, reply, call back and store the phone number.

(1) Voice message

The voice message can be received either by the ordinary message or by the voice mailbox. For the specific receiving method, consult the local carrier.

- (i) Press <OK> key to enter main menu.
- (ii) press **DOWN** or **UP** to find [Message] , then press ← to enter it .
- (iii) Press **UP** or **DOWN** to find [**Voice message**], and then press ← to confirm .

(2) New message

- (i) Press <OK> key to enter main menu .
- (ii) Find [**Messages**] and enter it .
- (iii) Press **UP** or **DOWN** to find [**New message**], then press ← key to enter it .

CHAPTER 5 BASIC OPERATIONS

- (iv) After finish new message, press to confirm .
- (v) Select [Input phone number], and type in phone number by pressing number key (0 to 9), and then press ← again to send the message. If select phone number from phone book, press ← key to enter phone book, and then choose the phone number and press ← again to send the message .

(3) Inbox

- (i) Press <OK> key to enter main menu.
- (ii) Press DOWN or UP to find [**Messages**] , then press ← to enter it .
- (iii) Find [**Inbox**], then press ← to enter it to view the received messages .

(4) Outbox

Whether the message is sent successfully or not, it will be saved in the outbox.

- (i) Press <OK> key to enter main menu.
- (ii) Press **DOWN** or **UP** to find [**Messages**], then press ← to enter it .
- (iii) Find [**Outbox**], then press ← to enter it to view the sent messages.

(5) Erase messages

- (i) Press <OK> key to enter main menu.
- (ii) Press DOWN or UP to find [**Messages**] , then press ← to enter it .

CHAPTER 5 BASIC OPERATIONS

- (iii) Press **DOWN** or **UP** to find [**Erase all**], then press ← to enter it .
- (iv) Press **UP** or **DOWN** to select information to be deleted from [**Outbox**], [**Inbox**], [**Erase all**], then press ← to confirm.

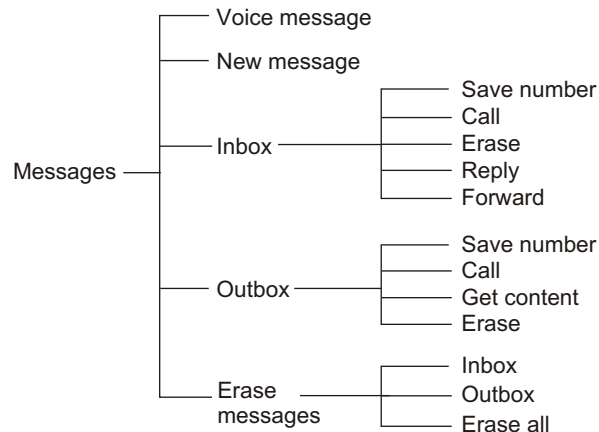


Figure Message menu

5.3 Call records

Call records include received calls, dialed calls and missed calls . You can do serial operation for any one entry .

CHAPTER 5 BASIC OPERATIONS

(1) Received calls

You can query the data and time of the received call. You can dial, delete the corresponding telephone number, or save it into the phone book. After you enter the **Records** interface.

- (i) Press <OK> key to enter main menu.
- (ii) Press **UP** or **DOWN** to find [**Recent calls**], then press ← to enter it .
- (iii) Find [Incoming calls], then press ← to view the incoming calls .

(2) Dialed calls

You can query the data and time of the dialed call records. You can dial, delete the corresponding telephone number, or save it into the phone book. After you enter the **Records** interface .

- (i) Press <OK> key to enter main menu.
- (ii) Press **UP** or **DOWN** to find [Recent calls], then press ← to enter it .
- (iii) Find [Outgoing calls], then press to view the outgoing calls.

(3) Missed calls

You can query the data and time of the missed call records. You can dial, delete the corresponding telephone number, or save it into the phone book. After you enter the **Records** interface .

- (i) Press <OK> key to enter main menu.
- (ii) Press **UP** or **DOWN** to find [Recent calls], then press ← to enter it .

CHAPTER 5 BASIC OPERATIONS

(4) Erase lists

- (i) Press <OK> key to enter main menu.
- (ii) Press UP or DOWN to find [Recent calls], then press ← to enter it .
- (iii) Find [Erase lists],then press to enter it, and then press **UP** or **DOWN** again to select one to be deleted of [Incoming calls], [Outgoing calls], [Missed calls], [Erase all], and then press ← to confirm .

(5) Call statistics

- (i) Press <OK> key to enter main menu.
- (ii) Press **UP** or **DOWN** to find [Recent calls], then press ← to enter it .
- (iii) Press **UP** or **DOWN** to find [**Call stat.**], Then press ← to enter it . Press **UP** or **DOWN** to select one of [**Incoming Calls stat.**], [**Outgoing Calls stat.**], [**All stat.**], [**Erase stat.**], And then press ← to confirm .

5.4 Tools

Include schedule, alarm clock, and other tools can be added depending on customer's demands .

(1) Schedule :

- (i) Press <OK> key to enter main menu.
Press **DOWN** or **UP** to find [Tools], then press to enter it .
- (ii) Find [Schedule], then press ← to enter it .

CHAPTER 5 BASIC OPERATIONS

- (iii) Press UP or DOWN to select one of [Add], [Browse] and [Erase], and then press **←** to enter it .
- (iv) After entering [Add] option, press **UP** or **DOWN** to select [schedule], and then press **[OK]** key to confirm, and then type in content of schedules by number key (0 to 9) and press **←** to confirm .

(2) Alarm clock

The FWT provides alarm clock function:

- (i) Press **<OK>** key to enter main menu .
Press DOWN or UP to find [Tools],then press **←** to enter it .
- (ii) Find [Alarm clock], then press **←** to enter it .
- (iii) Type in alarm time through number key (0 to 9), and then press **←** to confirm.
- (iv) Select [Alarm off] or [Alarm on], and then press **←** to confirm.

5.5 Settings

(1) Display

- (i) Press **<OK>** key to enter main menu.
- (ii) Press **UP** or **DOWN** to find [settings], and then press **←** to enter it .
- (iii) Find [Sound] over **UP** or **DOWN**, and then press **←** to enter it .
- (iv) Select ringer or volume or alert by **UP** or **DOWN**, and then press **←** to confirm .

CHAPTER 5 BASIC OPERATIONS

- (v) After entering [Ringer] option, press UP or DOWN to select one of [phone book], [not in phone book] and [Alarm] and set the desired ringer, then press **←** to confirm .
- (vi) After entering [Ringer type] option, press UP or DOWN to select common ringer or melody (up to 14 chord music for selection), and then press **←** to confirm.
- (vii) After entering volume option,select one of [Ringer volume], [push-button volume], [Handset volume] and [Speaker volume], then press **←** to confirm .
- (viii) After entering volume level, press UP or DOWN to select different volume level for selection (6-level volume adjustable), and then press **←** to confirm .
- (ix) After entering alert type, please select one of [Service change tone], [Minute alert],[Connection tone] and [Power on/off tone], and then press **←** to confirm.User can select [on/off] to enable /disable alert, and then press **←** to confirm .

(2) Display

- (i) Press **<OK>** key to enter main menu .
- (ii) Find [Display] through **DOWN** or **UP** key, and then press **←** key to confirm .
- (iii) Press **DOWN** or **UP** key to select one of [Banner], [Backlight], [Contrast] and [language], and then press **←** to confirm .
- (iv) After entering [Banner] option, type in desired content,and then press to confirm. After entering [Backlight] option, user can select [Timer]or [Contrast] and set them according to

CHAPTER 5 BASIC OPERATIONS

your demand, press **←** to confirm after finish. During contrast adjusting, 10-level for selection (0 to 9), after finish, press **←** to confirm. After entering language selection, three kinds of language are to be selected for you, including English, Chinese and Spanish, After selecting, press **←** to confirm.

(3) Security

You need password to enter security menu. The default is 0000. You can change the original password after entering it.

- (i) Press **<OK>** key to enter main menu.
- (ii) Find [Security] through **UP** or **DOWN** key, and then press **←** key to confirm.
- (iii) Find [Security] option over **DOWN** or **UP** key, and then press **←** to confirm.
- (iv) Type in correct password by number key, and then press **←** to confirm.

- Reset factory settings
Make volume, LCD, backlight setting back to factory state.

(4) Call setup

- Auto answer
First enable this function, so the phone will connect coming call in configured time automatically.
- Voice privacy
First enable this function, so enhance call security.

CHAPTER 5 BASIC OPERATIONS

(5) Network service

- (i) Press **<OK>** key to enter main menu.
- (ii) Find [Network service] through **UP** or **DOWN** key, and then press **←** key to confirm.
- (iii) Menu [Network service] includes three submenus such as [Call forward], [Call waiting] and [CNIR], please select one of them by pressing **←**.

NOTE:

You must apply for call waiting from local operator.

(6) Phone information

- (i) Press **<OK>** key enter main menu.
- (ii) Press **DOWN** or **UP** to find [Phone information], and then press **←** to enter it.
- (iii) User can type in [Own number] or check [Software version] by pressing key.

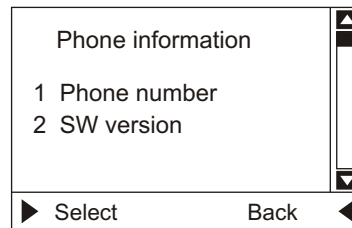


Figure Phone info. Interface

CHAPTER 5 BASIC OPERATIONS

(7) Management :

Key in original password **12345678** to enter:

- (i) Press <OK> key enter main menu .
- (ii) Press UP or DOWN to find [Public management], and type in password, and then press ← to enter it .
- (iii) User can type in [Own number] or check [Software version] by pressing ← key .

- IP setting

Reset IP access number, then press ← to confirm.

- Set local area code

Enter local code setting menu, then key in code and press **OK** Key to confirm or press **BACK/DEL** to cancel. after setting local code, when making a call, the phone adds local code before the phone number automatically .

- Local mobile seg.

You can set ten (max.) Mobile segments.

- Direct dial prefix :

You can set up to 20 direct dial prefix .

- Speed dial delay time

You can set speed dial delay time.

- Mobile add 0

When dialing out mobile number, the phone will attach **0** before mobile number.

- Security

- Lock operator

- ① Lock operator: Lock operator function
 - ② Operator code: Key in operator code to help manage .

CHAPTER 5 BASIC OPERATIONS

- Lock cell

- ① Locking cell

Ensure the phone can be used in specific area. Away from this cell, the phone does not work .

- ② Lock cell sum: Lock cell sum selectable .

- ③ Auto locking cell: Auto lock cell

- ④ View locked code: You can view locked cell code .

NMC :

You can select network management center number :

NMC and NMC2

- Super PSW

You can change the password over super PSW option .

- Load default: Return the all settings to factory settings .

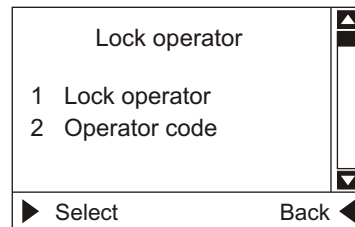


Figure Operator menu interface-1

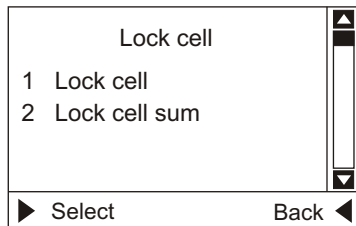


Figure Lock cell menu-1

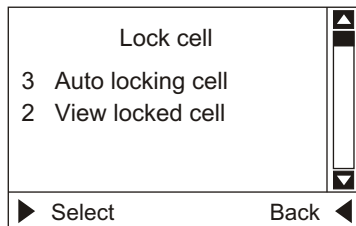


Figure lock cell menu-2

(8) Port speed

- (i) Press <OK> key to enter main menu.
- (ii) Find [Port speed] option over or key, and then press ← to enter it .
- (iii) Press DOWN or UP to select port speed. There are 6 kinds of speed for selection, including 9600, 19200, 28800, 57600, 115200, 230400, and then press ← to confirm after selecting .

5.6 Additional function

(1) Sector lock

Enable this function and ensure the FWT can be used in specific area, away from this sector area, the FWT does not work .

(2) Keypad lock

Press **BACK/DEL** key for 3 seconds in standby state to lock keypad. The original password is **0000**. If want to change this password, please enter **Security** option .

(3) Data Service

CDMA FWP can provide high speed data service (up to 153.6 kbps, the actual speed depends on your CDMA service provider and the service you have purchased). You can use your CDMA FWP as the modem for your computer.

Note: For the installation procedures, please refer Appendix.

5.7 Maintenance

(1) Keep the FWT and its accessories away from children .

(2) The FWT should be deployed in a clean and dry environment .

A temperature higher than 55°C or lower than -10°C maybe damages the FWT. If the FWT is covered with dust, please clean it with clean fine cloth. Be sure not to clean dust with cleanser or other chemical solvents .

CHAPTER 5 BASIC OPERATIONS

- (3) Remove the battery from the FWT if you do not use the FWT for long time .
- (4) If the FWT does not operate normally due to a failed battery, please replace the battery in time or power on the FWT through a power adapter .
- (5) Contact the carrier in time if the FWT can not work normally .

CHAPTER 6 TROUBLESHOOTING

1. The display screen keeps OFF after the FWT is turned on (no external power adapter is connected with the FWT).

- (1) Open the battery case to check whether the battery is installed.
- (2) If the battery has been installed, it means that the voltage of the battery becomes weak. In this case, you need to power on the FWT with a power adapter.

2. The display screen keeps OFF after the FWT is turned on (an external power adapter is connected with the FWT).

- (1) It is likely that the voltage output by the power adapter can not meet the requirement of the FWT. In this case, you need to check whether the AC input is normal, and whether the power adapter is the one accompanying the FWT.
- (2) It is also likely that the external voltage of the power adapter is lower or unstable, thus causing the case that the FWT cannot operate normally. In this case, you need to check whether the external voltage of the power adapter is normal, or power on the FWT with a battery.

3. There is no signal indicator on the screen of the FWT.

- (1) Check whether the antenna has been installed properly.
- (2) If there is still no signal indicator, please contact the carrier to check whether the signal covers the area of the FWT.

CHAPTER 6 TROUBLESHOOTING

4. There is no time indicator on the screen of the FWT.

- 1) Check whether the antenna has been installed properly.
- 2) Adjust the antenna of the FWT or move the FWT to the location where the signal can be received easily.
- 3) If there is still no time indicator, please contact the carrier to check whether the signal covers the area of the FWT.

5. Cannot connect with the peer immediately after dial-up (it takes ten seconds around for connection).

- 1) Check whether you press SEND after dial-up.
Pressing the key can implement the fast dial-out of a number. If the key is not pressed, the FWT will wait for seven seconds before dialing a telephone number.
- 2) Contact the carrier to check whether the signal covers the area of the FWT.

6. Hear ring tone after hearing busy tone.

Hearing ringing tone indicates that an external call is coming. If you are not in a conversation state, you can answer the call. For specific operations of answering a call.

7. Hear ringing tone when you are ready to dial or are dialing a number.

Hearing ringing tone indicates that an external call is coming. If you are not in a conversation state, you can answer the call. For specific operations of answering a call.

CHAPTER 6 TECHNICAL SPECIFICATION

Table 6-1 Technical parameters

Item	Description
Dimensions(W×D×H)	210mm×183mm×80mm
Weight	730g
Mounting mode	Horizontal or wall mounting
Input voltage	Input AC: 100V-240V Output DC: 7.5V 1000mAh
Maximum transmit power	250mW
Typical conversation Power consumption	1.2 W
Typical stand-by power Consumption	140mW
Ambient temperature	-10~55℃
Storage temperature	-20℃~70℃
Relative humidity	30%~95%

Appendix: How to Install FWP As PC's Modem.

7.1 Computer Configuration

7.1.1 Modem Installation

You can follow the steps described below to install FWP as a standard 33600 modem to your PC computer (**Note:** this document assumes that COM1 is the computer's port to which FWP will be connected)

- Connect FWP and PC with a serial cable .
- Open **Control Panel-> Phone and Modem Options**, you will see **Add/Remove Hardware Wizard** window, select **Modems** tab, press **Add...**, select **Next >** button, then install new modem.



Figure Add/Remove Hardware Wizard-1

- Move highlight to **Standard 33600 bps Modem**, select the key of **Next>**.

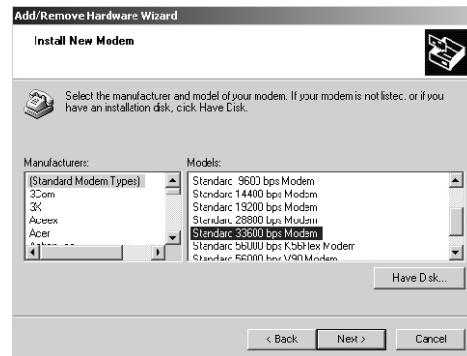


Figure Add/Remove Hardware Wizard-1

- Choose **COM1**, press **Next>** button.

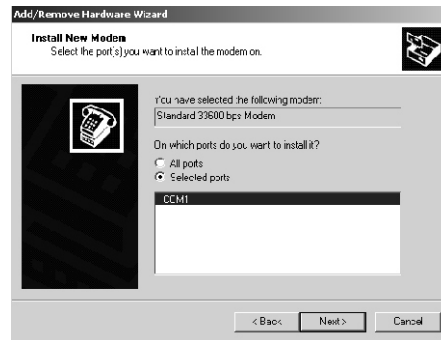


Figure Add/Remove Hardware Wizard - 3

- Modem installation is finished.

7.1.2 Configure properties

- Open **Control Panel-> Phone and Modem Options**, choose **Modems** tab from **Phone and Modem Options** window, select list item **Standard 33600 bps Modem**, press the key of **Properties**, then change parameter **Maximum Port Speed** to 115200.

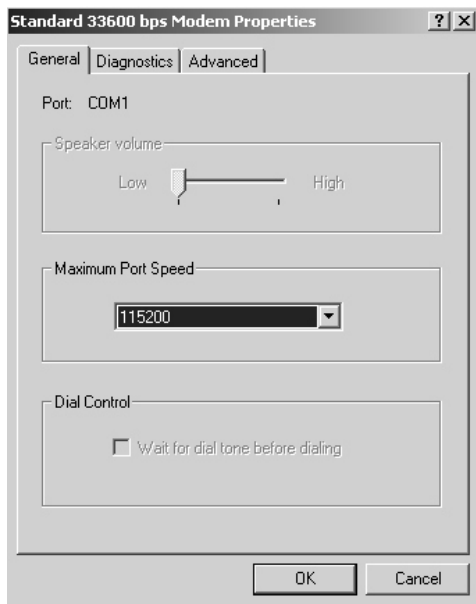


Figure Properties Configuration – 1

- Open **Standard 33600 bps Modem Properties -> Advanced** tab, press **Change Default Preferences...** button and check the parameter: Port speed: 115200.

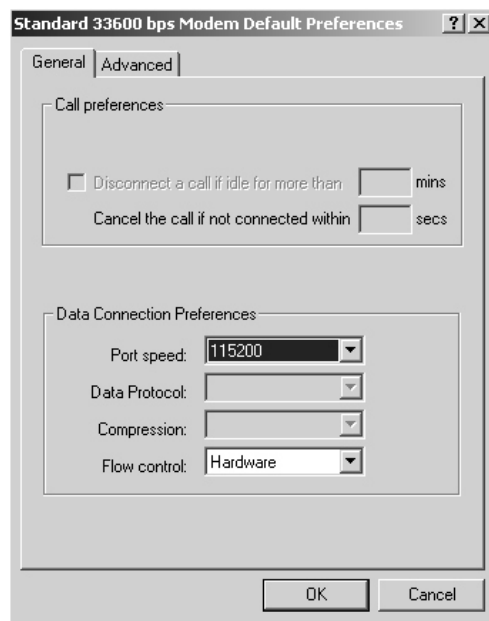


Figure Properties Configuration – 2

CHAPTER 7 APPENDIX

- Change to **Advanced** tab at **Standard 33600 bps Modem Properties** window, input AT Command **AT+CRM=1;+CPS=33;+CMUX=1; +CTA=0** at initialization command frame, after finishing it, then press **OK**.

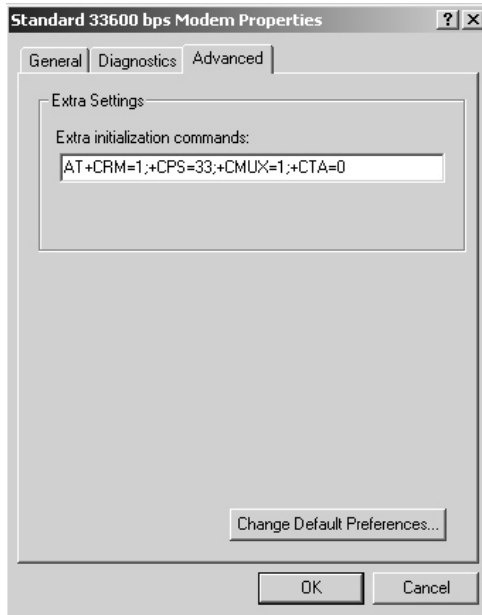


Figure Properties Configuration – 3

CHAPTER 7 APPENDIX

7.1.3 Create dial-up Connection

This section shows you how to create a dial-up connection using a FWP as the modem (you should have follow the previous section to install a modem with your computer).

- Open **Control Panel-> Network and Dial-up Connections**, click **Make New Connection**, you will see a **Network Connection Wizard** window, press **Next>** button.

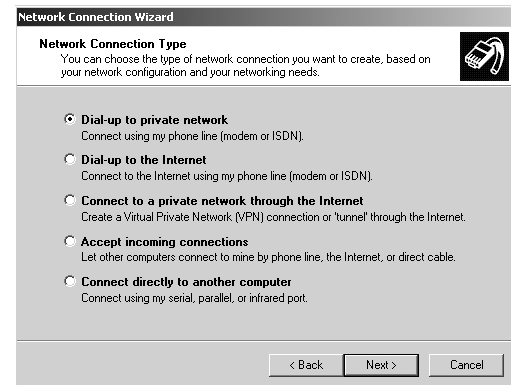


Figure Network Connection Wizard – 1

- Input **Phone number**, Press **Next>** till **Connect Dial-up Co**
nnection window are shown.

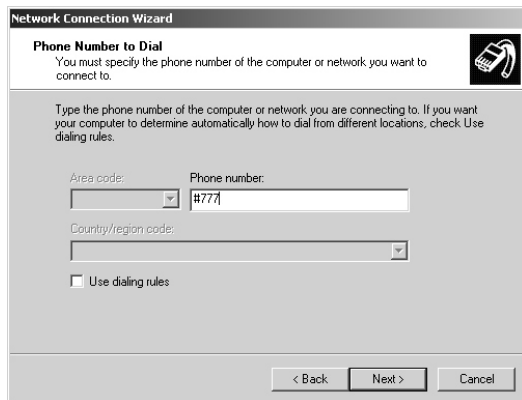


Figure Network Connection Wizard – 2

- Press **Properties** at **Connect Dial-up Connection** window, a figure of **Dial-up Connection** will be displayed, move highlight to **Modem-Standard 33600 bps Modem**, Press **Configure...** button, and check **Maximum speed: 115200**.

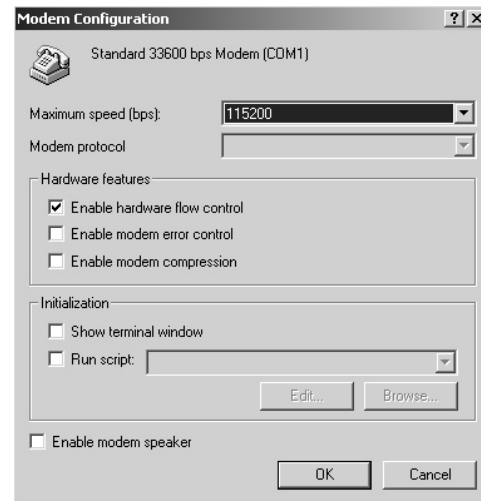


Figure Dial-up Connection Properties Configuration

- Input **User name**, **card** and **Password**, **card** at **connect Dial**
-up Connection window, set up **Save password** checkbox, click **Dial** and you have finished connection.

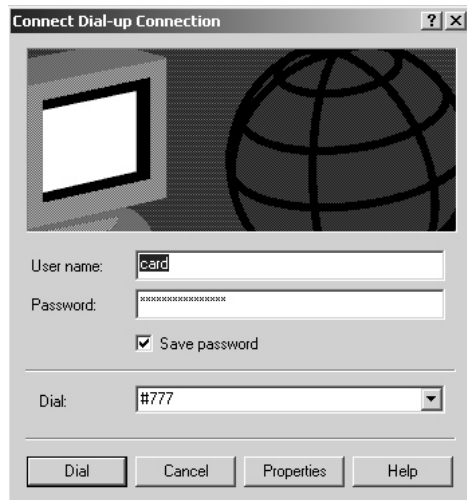


Figure Connect Dial-up Connection

7.2 Configure FWP

- Make sure that the baud rate of FWP is set to 115200. To verify or change the baud rate, go to **Settings** menu, then choose **Port Speed** sub-menu.
- Make sure that the **Serial Choice** switch is turned to **Data** position.
- Make sure that a DB9 serial cable is used to connect FWP to your PC.
- Once finishing the configuration of both you PC and FWP, re-start your FWP.

8.1 FCC Statement

Any changes or modification to the product not expressly approved by GREENFIELD INVEST & TRADE INC. could void the user's authority to operate this device.

FWT must be positioned to observe minimum separation of 20cm from all users and bystanders. Exceeding this minimum separation will ensure that the users or bystander does not receive RF-exposure beyond the Maximum Permissible Exposure according to section 1.1310 i.e. limits for General Population/Uncontrolled Exposure.