

Test Report for  
CFR47 15C  
FOR  
Interactive Technologies, Inc.

15655 South Mahaffie Street

Olathe, KS 66062

Model: **IQ69-2.4**

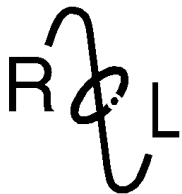
Low Power Transmitter Module

FCC ID: ULP-IQ6924

Test Report Number 130103

Authorized Signatory: *Scot D Rogers*

Scot D. Rogers



**ROGERS LABS, INC.**

4405 West 259<sup>th</sup> Terrace  
Louisburg, KS 66053  
Phone / Fax (913) 837-3214

Test Report for Application of Certification

For

**Interactive Technologies, Inc.**

15655 South Mahaffie Street  
Olathe, KS 66062

Phone: (913) 254-0887 111

Mr. Rob Dorrell  
President

Model: IQ69-2.4

Low Power Transmitter

Frequency Range: 2,405-2,480 MHz

FCC ID: ULP-IQ6924

Test Report Number: 130103

Test Date: January 3, 2013

Authorized Signatory: *Scot D. Rogers*

Scot D. Rogers  
Rogers Labs, Inc.  
4405 West 259<sup>th</sup> Terrace  
Louisburg, KS 66053  
Telephone/Facsimile: (913) 837-3214

This report shall not be reproduced except in full, without the written approval of the laboratory.  
This report must not be used by the client to claim product endorsement by NVLAP, NIST, or any agency of the Federal Government.



## Table of Contents

<b>TABLE OF CONTENTS.....</b>	<b>3</b>
<b>REVISIONS.....</b>	<b>4</b>
<b>FORWARD .....</b>	<b>5</b>
<b>OPINION / INTERPRETATION OF RESULTS .....</b>	<b>5</b>
<b>ENVIRONMENTAL CONDITIONS.....</b>	<b>5</b>
<b>STATEMENT OF MODIFICATIONS AND DEVIATIONS .....</b>	<b>5</b>
<b>APPLICATION FOR CERTIFICATION.....</b>	<b>6</b>
<b>EQUIPMENT TESTED SETUP, FUNCTION AND CONFIGURATIONS .....</b>	<b>7</b>
Equipment Function and Test Setup.....	7
Limited Modular Compliance Statements.....	7
EUT Configuration .....	7
<b>LIST OF TEST EQUIPMENT .....</b>	<b>8</b>
<b>UNITS OF MEASUREMENTS .....</b>	<b>9</b>
<b>TEST SITE LOCATIONS .....</b>	<b>9</b>
<b>APPLICABLE STANDARDS &amp; TEST PROCEDURES .....</b>	<b>9</b>
AC Line Conducted Emission Test Procedure.....	10
Diagram 1 Test arrangement for Conducted emissions.....	10
Radiated Emission Test Procedure .....	11
Diagram 2 Test arrangement for radiated emissions of tabletop equipment .....	12
Diagram 3 Test arrangement for radiated emissions tested on Open Area Test Site (OATS) .....	13
<b>INTENTIONAL RADIATORS.....</b>	<b>13</b>
Antenna Requirements.....	13
Restricted Bands of Operation .....	14
Table 1 Radiated Emissions in Restricted Bands Data (worst-case) .....	14
Summary of Results for Radiated Emissions in Restricted Bands .....	15
General Radiated EMI Testing Procedure .....	15
Table 2 General Radiated Emissions from EUT Data (Highest Emissions) .....	16



<b>Summary of Results for General Radiated Emissions.....</b>	<b>16</b>
<b>Operation in the Band 2,400-2,483.5 MHz .....</b>	<b>17</b>
Figure 1 Occupied Bandwidth (low channel).....	18
Figure 2 Occupied Bandwidth (middle channel).....	18
Figure 3 Occupied Bandwidth (high channel).....	19
Figure 4 Operation across frequency band .....	19
Figure 5 Low Frequency Band Edge.....	20
Figure 6 High Frequency Band Edge.....	20
<b>Table 3 Transmitter Radiated Emissions .....</b>	<b>21</b>
<b>Summary of Results for Transmitter Radiated Emissions.....</b>	<b>22</b>
<b>ANNEX.....</b>	<b>23</b>
Annex A Measurement Uncertainty Calculations .....	24
Annex B Rogers Labs Test Equipment List .....	25
Annex C Rogers Qualifications.....	26
Annex D FCC Test Site Registration Letter .....	27
Annex E Industry Canada Test Site Registration Letter .....	28

## Revisions

Revision 1 Issued February 2, 2013

## Forward

The following information is submitted for consideration in obtaining Grant of Certification for License Exempt intentional radiator per CFR 47 Paragraph 15.249, and Industry Canada RSS-210, operation in the 2400 – 2483.5 MHz band.

Name of Applicant: Interactive Technologies, Inc.  
15655 South Mahaffie Street  
Olathe, KS 66062

Model: IQ69-2.4

FCC ID: ULP-IQ6924

Frequency Range: 2,405-2,480 MHz

Operating Power: Less than 3 mW measured, maximum average power 60.1 dB $\mu$ V/m @  
3 meters, 6-dB occupied bandwidth 2,628.2 kHz

## Opinion / Interpretation of Results

Test Performed	Minimum Margin (dB)	Results
Antenna requirement per CFR 47 15.203, RSS-210	NA	Complies
Restricted Bands Emissions as per CFR 47 15.205	-16.0	Complies
AC Line Conducted Emissions as per CFR 47 15.207	N/A	Complies
Radiated Emissions as per CFR 47 15.209	-23.0	Complies
Emissions per CFR 47 15.249 (Harmonics)	-8.6	Complies
Emissions per RSS-210	As Documented	Complies

## Environmental Conditions

Ambient Temperature	21.8° C
Relative Humidity	25%
Atmospheric Pressure	1030.2 mb

## Statement of Modifications and Deviations

No modifications to the EUT were required for the equipment to demonstrate compliance with CFR 47 Part 15C, or RSS-210 Emissions Requirements. There were no deviations or modification to the specifications.



## Application for Certification

- (1) Manufacturer: Interactive Technologies, Inc.  
15655 South Mahaffie Street  
Olathe, KS 66062  
Telephone: (913) 254-0887 111
- (2) Identification: FCC ID: ULP-IQ6924
- (3) Copy of the installation and operating manual: Refer to exhibit for Draft Instruction Manual.
- (4) Description of Circuit Functions, Device Operation: The EUT is a transceiver module offering manufacturer cost effective solution for low power 2.4 GHz wireless design implementation. The equipment offers a wireless interface allowing communications to compliant equipment over short distances.
- (5) Block Diagram with Frequencies: Refer to exhibit for Block Diagram
- (6) Report of measurements demonstrating compliance with the pertinent FCC/IC technical requirements provided in this report.
- (7) Photographs of equipment are provided in other application exhibits.
- (8) Peripheral equipment or accessories for the equipment. The module required placement on support circuitry for operation. A development interface board was offered for testing purposes. The development board and module were powered from External DC power supply during testing. No other equipment was available other than that shown in the configuration diagram. The available configuration options were investigated for this report with worst-case data presented.
- (9) Transition Provisions of 15.37 are not being requested
- (10) The equipment is not a scanning receiver.
- (11) The equipment is not a transmitter operating in the 59-64 GHz frequency range.
- (12) The equipment is not software defined and this section is not applicable.

## Equipment Tested Setup, Function and Configurations

<u>Equipment</u>	<u>Model/GPN</u>	<u>Serial Number</u>	<u>FCC ID</u>
IQ69-2.4 (EUT)	IQ69-2.4	ENG1	ULP-IQ6924
Development Board	P73813	N/A	N/A
Bench DC Power	1670A	N961313540	N/A

Test results in this report relate only to the items tested.

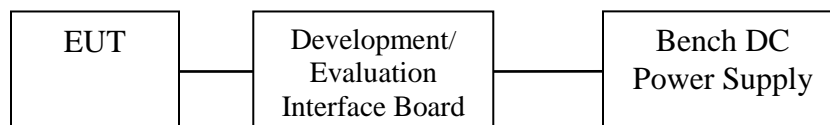
### ***Equipment Function and Test Setup***

The EUT is a low power transceiver module with operation capability in the 2403-2480 MHz frequency band (CFR47, 15.249 and RSS-210). The unit allows for wireless communications to other 2400-2483.5 MHz compliant equipment. The design is offered for implementation as a module to other equipment requiring low power wireless communication. Test results in this report relate only to the products described in this report.

### ***Modular Compliance Statements***

- 1.) The unit has shield effectively preventing coupling between the RF circuitry of the module and any wires or circuits in the device into which the module is installed. Photographs of the unit are included in an exhibit with the application.
- 2.) The unit incorporates buffer stage of the inputs to eliminate over-modulation.
- 3.) The unit has power regulation circuitry incorporated to ensure compliance while powered from appropriate power supplying circuitry.
- 4.) The unit utilizes a unique antenna printed on the circuit board and complies with the antenna connection requirements of 15.203.
- 5.) The module was tested in a stand-alone configuration utilizing a test fixture for interface allowing for testing.
- 6.) The module has the FCC ID number permanently affixed to the equipment and appropriate compliance statements will be placed on the exterior of equipment incorporating the module.
- 7.) The unit complies with CFR47 regulations as stated in the user manual. Adequate instructions are supplied with the unit to explain the requirements.
- 8.) The unit complies with the RF exposure requirements as stated in 2.1091, 2.1093, and part 15.

### ***EUT Configuration***



## List of Test Equipment

A Rohde and Schwarz ESU40 and/or Hewlett Packard 8591EM was used as the measuring device for the emissions testing of frequencies below 1 GHz. A Rohde and Schwarz ESU40 and/or Hewlett Packard 8562A Spectrum Analyzer was used as the measuring device for testing the emissions at frequencies above 1 GHz. The analyzer settings used are described in the following table. Refer to the appendix for a complete list of test equipment.

Receiver / Analyzer Settings		
Conducted Emissions		
RBW	AVG. BW	Detector Function
9 kHz	30 kHz	Peak / Quasi Peak
Radiated Emissions 30-1000 MHz		
RBW	AVG. BW	Detector Function
120 kHz	300 kHz	Peak / Quasi Peak
Radiated Emissions above 1000 MHz		
RBW	Video BW	Detector Function
100 kHz	100 kHz	Peak
1 MHz	1 MHz	Peak / Average

<u>Equipment</u>	<u>Manufacturer</u>	<u>Model</u>	<u>Band</u>	<u>Cal Date</u>	<u>Due</u>
<input type="checkbox"/> LISN	Comp. Design	FCC-LISN-2-MOD.CD	.15-30MHz	10/12	10/13
<input type="checkbox"/> Antenna	ARA	BCD-235-B	20-350MHz	10/12	10/13
<input type="checkbox"/> Antenna	EMCO	3147	200-1000MHz	10/12	10/13
<input checked="" type="checkbox"/> Antenna	Com Power	AH-118	1-18 GHz	10/11	10/13
<input checked="" type="checkbox"/> Antenna	Com Power	AH-840	18-40 GHz	10/12	10/13
<input checked="" type="checkbox"/> Antenna	Standard	FXRY638A	10-18 GHz	3/12	5/13
<input checked="" type="checkbox"/> Antenna	EMCO	6509	.001-30 MHz	2/12	2/13
<input type="checkbox"/> Antenna	EMCO	3143	20-1200 MHz	5/12	5/13
<input checked="" type="checkbox"/> Antenna	Sunol	JB-6	30-1000 MHz	5/12	5/13
<input type="checkbox"/> Analyzer	HP	8591EM	9kHz-1.8GHz	5/12	5/13
<input type="checkbox"/> Analyzer	HP	8562A	9kHz-110GHz	5/12	5/13
<input checked="" type="checkbox"/> Analyzer	Rohde & Schwarz	ESU40	20Hz-40GHz	5/12	5/13
<input checked="" type="checkbox"/> Amplifier	Com-Power	PA-010	100Hz-30MHz	10/12	10/13
<input checked="" type="checkbox"/> Amplifier	Com-Power	CPPA-102	1-1000 MHz	10/12	10/13
<input checked="" type="checkbox"/> Amplifier	Com-Power	PA-122	0.5-22 GHz	10/12	10/13





## Units of Measurements

Conducted EMI      Data is in dB $\mu$ V; dB referenced to one microvolt

Radiated EMI      Data is in dB $\mu$ V/m; dB/m referenced to one microvolt per meter

Sample Calculation:

RFS = Radiated Field Strength, FSM = Field Strength Measured

A.F. = Receive antenna factor, Gain = amplification gains and/or cable losses

$RFS (dB\mu V/m @ 3m) = FSM (dB\mu V) + A.F. (dB) - Gain (dB)$

## Test Site Locations

Conducted EMI      The AC power line conducted emissions testing performed in a shielded screen room located at Rogers Labs, Inc., 4405 W. 259<sup>th</sup> Terrace, Louisburg, KS

Radiated EMI      The radiated emissions tests were performed at the 3 meters, Open Area Test Site (OATS) located at Rogers Labs, Inc., 4405 W. 259<sup>th</sup> Terrace, Louisburg, KS

Site Registration      Refer to Annex for Site Registration Letters

NVLAP Accreditation      Lab code 200087-0

## Applicable Standards & Test Procedures

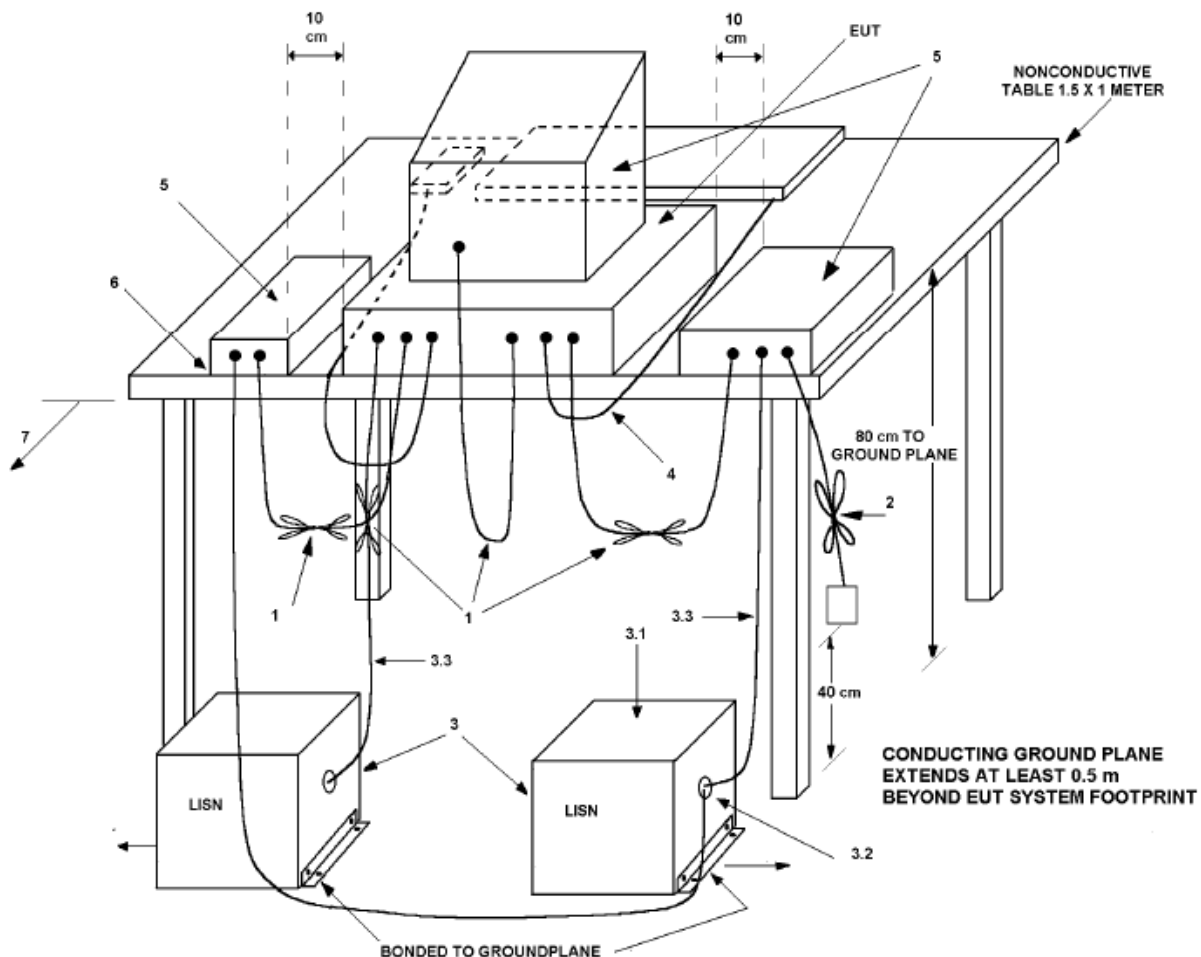
In accordance with the Federal Communications Code of Federal Regulations, dated October 1, 2012, Part 2, Subpart J, Paragraphs 2.907, 2.911, 2.913, 2.925, 2.926, 2.1031 through 2.1057, and applicable parts of paragraph 15, Part 15C Paragraph 15.249 and Industry Canada RSS-210, the following information is submitted. Test procedures used are the established Methods of Measurement of Radio-Noise Emissions as described in the ANSI C63.4-2009 Document.

Testing procedures, if applicable, include testing for the AC line-conducted emissions performed as defined in sections 7 and 13.1.3, testing of the radiated emissions performed as defined in sections 8 and 13.1.4 of ANSI C63.4-2009. Testing of the intentional radiated emissions was performed as defined in section 13 of ANSI C63.4-2009.

## AC Line Conducted Emission Test Procedure

The design operates from direct current power only and offers no provision for connection to utility AC power systems. Therefore, no AC line conducted emissions testing is required. If required, testing for the AC line-conducted emissions testing would be performed as defined in sections 7 and 13.1.3 of ANSI C63.4-2009. The test setup including the EUT would be arranged in typical equipment configurations and placed on a 1 x 1.5-meter wooden bench, 0.8 meters high located in a screen room. The power lines of the system would be isolated from the power source using a standard LISN with a 50- $\mu$ Hy choke. EMI would be coupled to the spectrum analyzer through a 0.1  $\mu$ F capacitor internal to the LISN. The LISN is positioned on the floor beneath the wooden bench supporting the EUT. The power lines and cables would be draped over the back edge of the table. Refer to diagram 1 showing typical test arrangement and photographs in the test setup exhibits for specific EUT placement during testing.

**Diagram 1 Test arrangement for Conducted emissions**

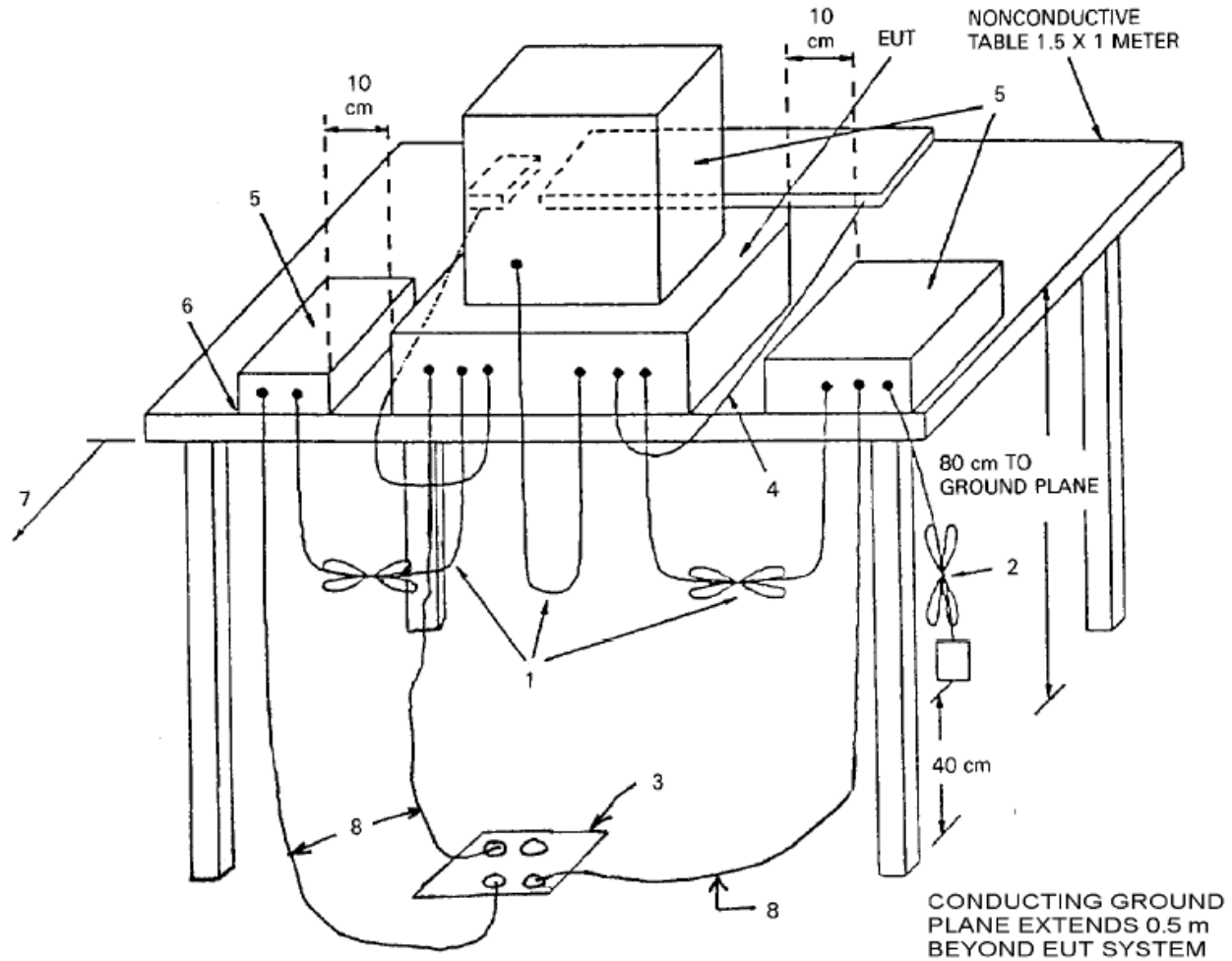


1. Interconnecting cables that hang closer than 40 cm to the ground plane were folded back and forth in the center forming a bundle 30 cm to 40 cm long.
2. Input/output (I/O) cables that are not connected to a peripheral shall be bundled in the center. The end of the cable may be terminated, if required, using the correct terminating impedance. The overall length shall not exceed 1 m.
3. EUT connected to one LISN. Unused LISN measuring port connectors are terminated into 50  $\Omega$  loads. LISN is placed on top of and bonded to reference ground plane.
  - 3.1 All other equipment powered from additional LISN(s).
  - 3.2 Multiple outlet strips can be used for multiple power cords of non-EUT equipment.
  - 3.3 LISN is positioned at least 80 cm from nearest part of EUT chassis.
4. Cables of hand-operated devices, such as keyboards, mice, and so on, shall be placed as for normal use.
5. Non-EUT components of EUT system being tested.
6. Rear of EUT, including peripherals, shall all be aligned and flush with rear of tabletop.
7. Rear of tabletop shall be 40 cm removed from a vertical conducting plane that is bonded to the ground plane (see 5.2.2 for options).

### ***Radiated Emission Test Procedure***

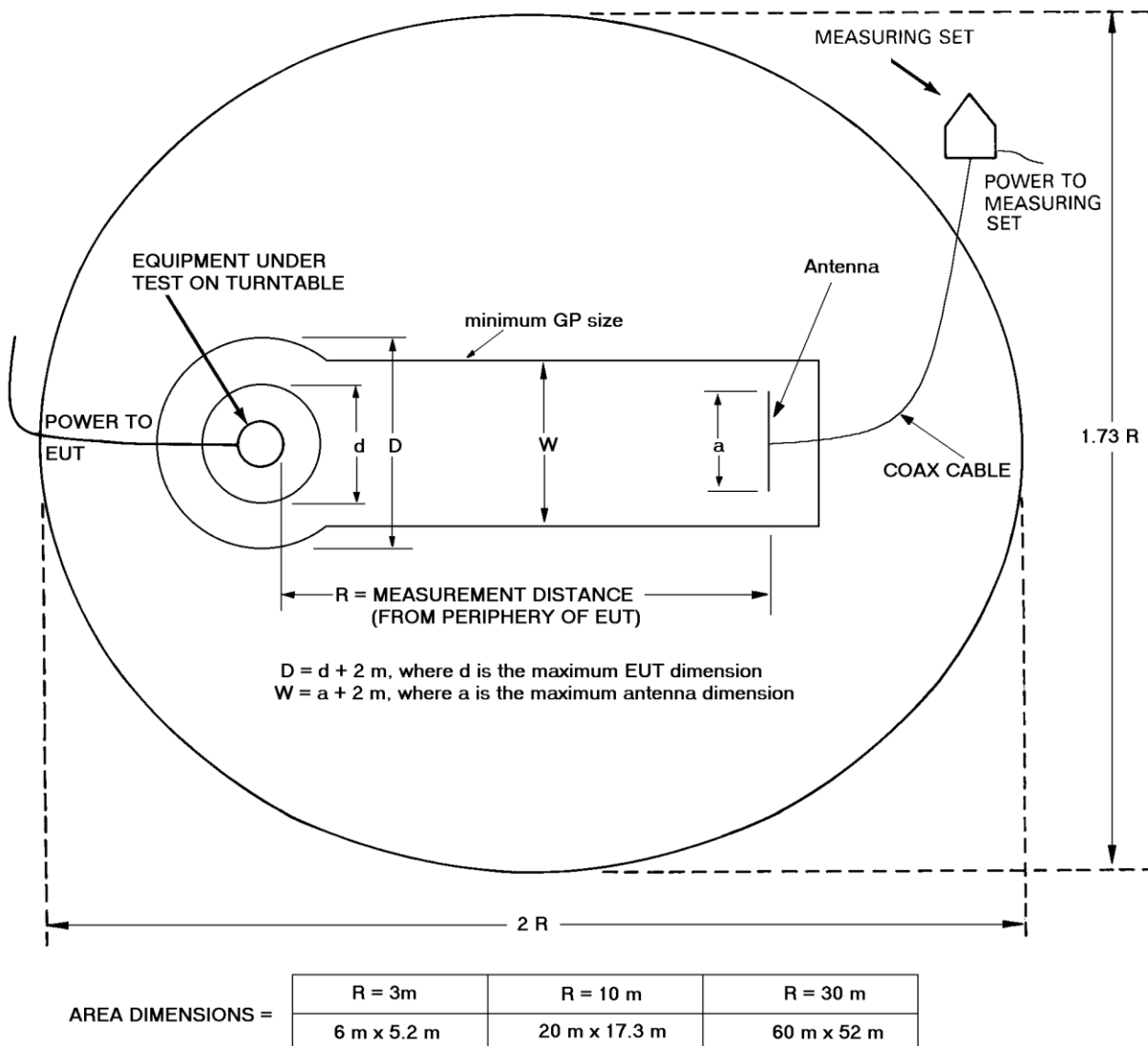
The EUT was placed on a rotating 1 x 1.5-meter wooden platform, 0.8 meters above the ground plane at a distance of 3 meters from the FSM antenna. Testing radiated emissions was performed as required by CFR47 15, RSS-210 and as specified in sections 8 and 13.1.4 of ANSI C63.4-2009. EMI energy was maximized by equipment placement, raising and lowering the FSM antenna, changing the antenna polarization, and by rotating the turntable. Each emission was maximized before data was taken using a spectrum analyzer. The frequency spectrum from 9 kHz to 25,000 MHz was searched for during preliminary investigation. Refer to diagrams 2 and 3 showing typical test arrangement and photographs in the test setup exhibits for specific EUT placement during testing.

**Diagram 2 Test arrangement for radiated emissions of tabletop equipment**



1. Interconnecting cables that hang closer than 40 cm to the ground plane shall be folded back and forth in the center, forming a bundle 30 cm to 40 cm long.
2. I/O cables that are not connected to a peripheral shall be bundled in the center. The end of the cable may be terminated if required using the correct terminating impedance. The total length shall not exceed 1 m.
3. If LISNs are kept in the test setup for radiated emissions, it is preferred that they be installed under the ground plane with the receptacle flush with the ground plane.
4. Cables of hand-operated devices, such as keyboards, mice, and so on, shall be placed as for normal use.
5. Non-EUT components of EUT system being tested.
6. Rear of EUT, including peripherals, shall all be aligned and flush with rear of tabletop (possibly center of table for transmitter equipment).
7. No vertical conducting plane used.
8. Power cords drape to the floor and are routed over to receptacle.

### Diagram 3 Test arrangement for radiated emissions tested on Open Area Test Site (OATS)



### Intentional Radiators

The following information is submitted as per CFR 47 Part 15, Subpart C and RSS-210.

### Antenna Requirements

The unit is produced with a permanently attached antenna printer on the circuit board. The design offers no provisions for modification or alterations. The EUT demonstrates compliance with the unique antenna connection requirements of CFR47 15.203 and other relevant standards. There are no deviations or exceptions to the specification.

### ***Restricted Bands of Operation***

Spurious emissions falling in the restricted frequency bands of operation were measured at the OATS. The EUT utilizes frequency, determining circuitry, which generates harmonics falling in the restricted bands. Emissions were investigated at the OATS, using appropriate antennas or pyramidal horns, amplification stages, and a spectrum analyzer. Peak and average amplitudes of frequencies above 1000 MHz were compared to the required limits with worst-case data presented below. Test procedures of ANSI C63.4-2009 paragraphs 13.1 and 8.3.1.2 were used during testing. No other significant emission was observed which fell into the restricted bands of operation. Computed emission values take into account the received radiated field strength, receive antenna correction factor, amplifier gain stage, and test system cable losses.

***Table 1 Radiated Emissions in Restricted Bands Data (worst-case)***

Frequency in MHz	Horizontal Peak (dBμV/m)	Horizontal Quasi-Peak (dBμV/m)	Horizontal Average (dBμV/m)	Vertical Peak (dBμV/m)	Vertical Quasi-Peak (dBμV/m)	Vertical Average (dBμV/m)	Limit @ 3m (dBμV/m)
132.9	27.2	20.5	N/A	27.8	17.6	N/A	43.5
2390.0	53.3	N/A	30.2	56.4	N/A	30.7	54.0
2483.5	56.5	N/A	32.0	59.4	N/A	32.7	54.0
4810.0	47.6	N/A	34.8	48.6	N/A	34.8	54.0
4890.0	49.6	N/A	35.1	50.9	N/A	35.2	54.0
4960.0	51.4	N/A	34.8	52.2	N/A	35.0	54.0
7215.0	49.5	N/A	36.6	49.8	N/A	36.6	54.0
7335.0	49.2	N/A	36.0	49.0	N/A	35.8	54.0
7440.0	49.6	N/A	36.2	48.8	N/A	36.2	54.0
12025.0	49.0	N/A	36.6	49.3	N/A	36.5	54.0
12225.0	49.9	N/A	36.1	49.6	N/A	36.4	54.0
12400.0	50.9	N/A	37.6	50.8	N/A	38.0	54.0

Other emissions present had amplitudes at least 20 dB below the limit.

Peak and Quasi-Peak amplitude emissions are recorded above for frequency range of 26-1000 MHz. Peak and Average amplitude emissions are recorded above for frequency range above 1000 MHz.

## ***Summary of Results for Radiated Emissions in Restricted Bands***

The EUT demonstrated compliance with the radiated emissions requirements of FCC CFR 47 Part 15.205 and RSS-210 restricted bands of operation. The EUT worst-case configuration demonstrated minimum margin of -16.0 dB below the CFR 47 and RSS-210 limits. Other emissions were present with amplitudes at least 20 dB below the required limits.

## ***General Radiated EMI Testing Procedure***

Radiated emissions were investigated while arranged in testing configuration as described offering functional support and control of EUT. Preliminary investigations were performed in a screen room with the EUT positioned 1 meter from the FSM. Investigations were performed to identify frequencies that produced the highest radiated emissions. Radiated emission investigations were performed from 9 kHz to 25,000 MHz with the EUT positioned in three orthogonal axes per regulations. Frequencies of interest were recorded for use during testing on the OATS. Each emission was then maximized at the OATS site before final radiated emissions measurements were performed. Final data was taken with the EUT located at the open field test site at a distance of 3 meters between the EUT and the receiving antenna. Test procedures of ANSI C63.4-2009 paragraphs 13.1 and 8.3.1.2 were used during radiated emissions testing. Peak and average amplitudes of frequencies above 1000 MHz were compared to the required limits with worst-case data presented below. Measured emission levels were maximized by EUT placement on the table, changing cable location, rotating the turntable through 360 degrees, varying the antenna height between 1 and 4 meters above the ground plane and changing antenna polarization between horizontal and vertical. Antennas used were Loop from 0.09 to 30 MHz, Broadband Biconical from 30 MHz to 200 MHz, Log Periodic from 200 MHz to 1 GHz, and/or Biconilog from 30 MHz to 1000 MHz, Double-Ridge, and/or Pyramidal Horns from 1 GHz to 25 GHz, and amplification stages.

**Table 2 General Radiated Emissions from EUT Data (Highest Emissions)**

Frequency in MHz	Horizontal Peak (dBμV/m)	Horizontal Quasi-Peak (dBμV/m)	Horizontal Average (dBμV/m)	Vertical Peak (dBμV/m)	Vertical Quasi-Peak (dBμV/m)	Vertical Average (dBμV/m)	Limit @ 3m (dBμV/m)
132.9	27.2	20.5	N/A	27.8	17.6	N/A	43.5
300.0	19.1	13.3	N/A	19.5	13.8	N/A	46.0
437.6	23.6	16.2	N/A	22.1	17.0	N/A	46.0

Other emissions present had amplitudes at least 20 dB below the limit. Peak and Quasi-Peak amplitude emissions are recorded above for frequency range of 9 kHz to 1000 MHz. Peak and Average amplitude emissions are recorded above for frequency range above 1000 MHz.

### **Summary of Results for General Radiated Emissions**

The EUT demonstrated compliance with the general radiated emissions requirements of FCC Part 15C, RSS-210 and other applicable standards for Intentional Radiators. The EUT worst-case configuration demonstrated minimum margin of -23.0 dB below the general radiated emissions limit. Other emissions were present with amplitudes at least 20 dB below the Limits.





### ***Operation in the Band 2,400-2,483.5 MHz***

The transmitter output power; harmonic and general emissions were measured on an open area test site @ 3 meters. Test procedures of ANSI C63.4-2009 paragraphs 13.1 and 8.3.1.2 were used during testing. The EUT test configuration was placed on a wooden turntable 0.8 meters above the ground plane and at a distance of 3 meters from the FSM antenna. The peak and quasi-peak amplitude of frequencies below 1000 MHz were measured using a spectrum analyzer. The peak and average amplitude of frequencies above 1000 MHz were measured using a spectrum analyzer. The amplitude of each emission was then recorded from the analyzer display. Plots were taken of the transmitter performance for reference in this and other documentation. Refer to figures one through six showing the frequency and amplitude of transmitter emissions as displayed on the spectrum analyzer. The amplitude of each radiated emission was measured on the OATS at a distance of 3 meters from the FSM antenna (testing was performed on sample 1 representative of production with integral antenna). The amplitude of each radiated emission was maximized by varying the FSM antenna height, polarization, and by rotating the turntable. A Loop antenna was used for measuring emissions from 0.009 to 30 MHz, Biconilog Antenna for 30 to 1000 MHz, Double-Ridge, and/or Pyramidal Horn Antennas from 1 GHz to 25 GHz. Emissions were measured in dB $\mu$ V/m @ 3 meters.

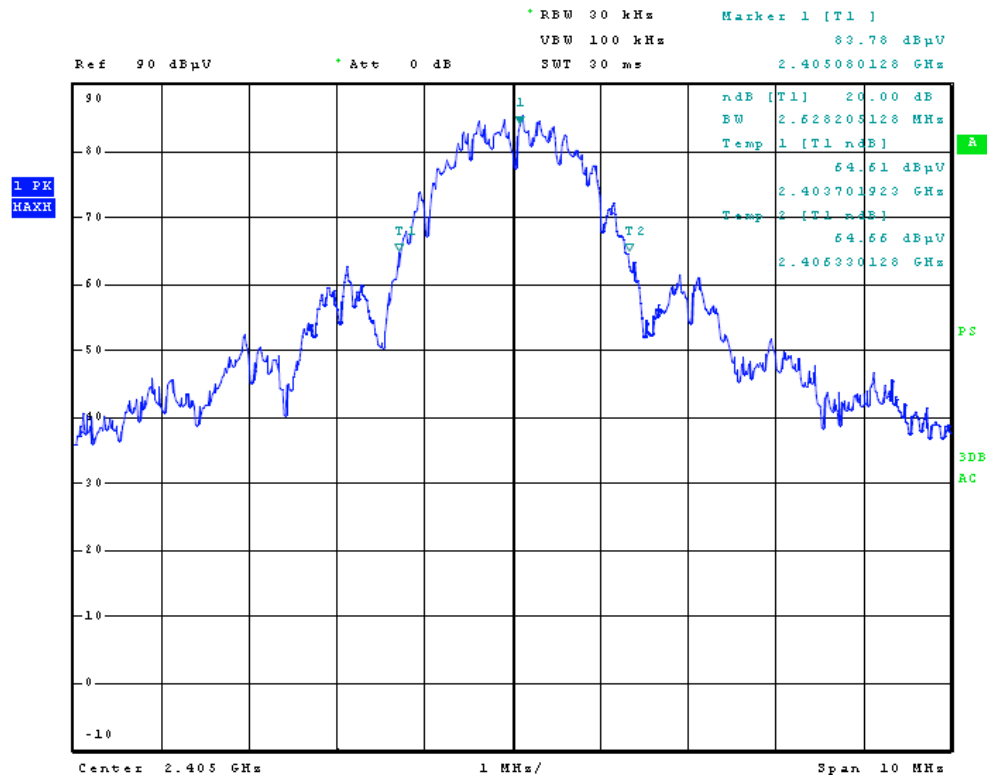


Figure 1 Occupied Bandwidth (low channel)

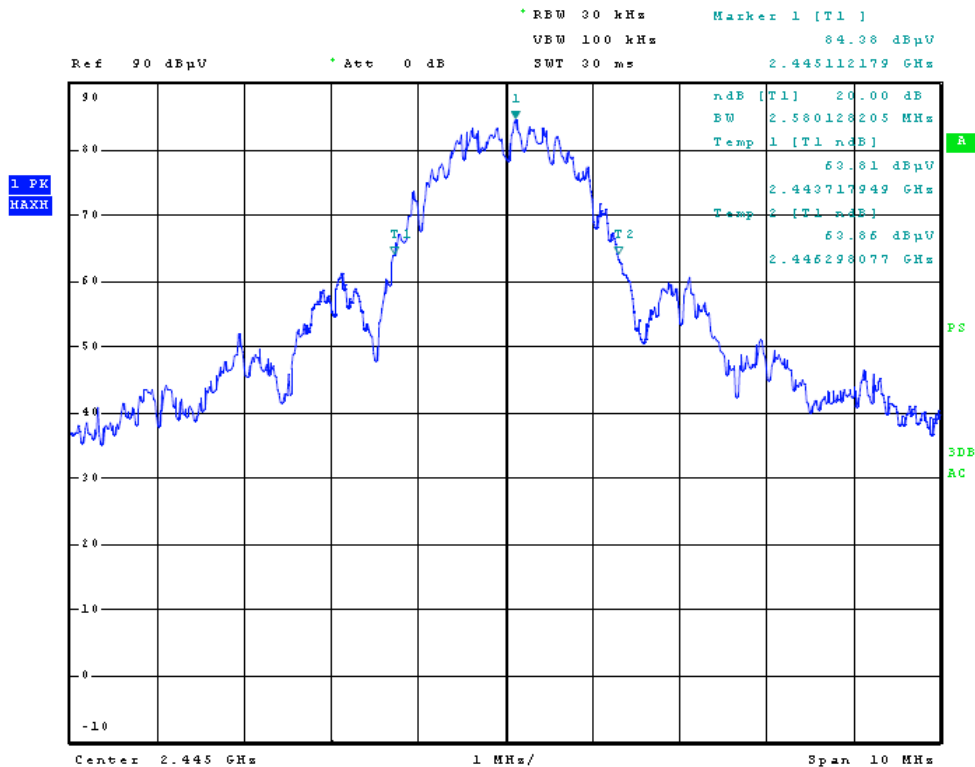


Figure 2 Occupied Bandwidth (middle channel)

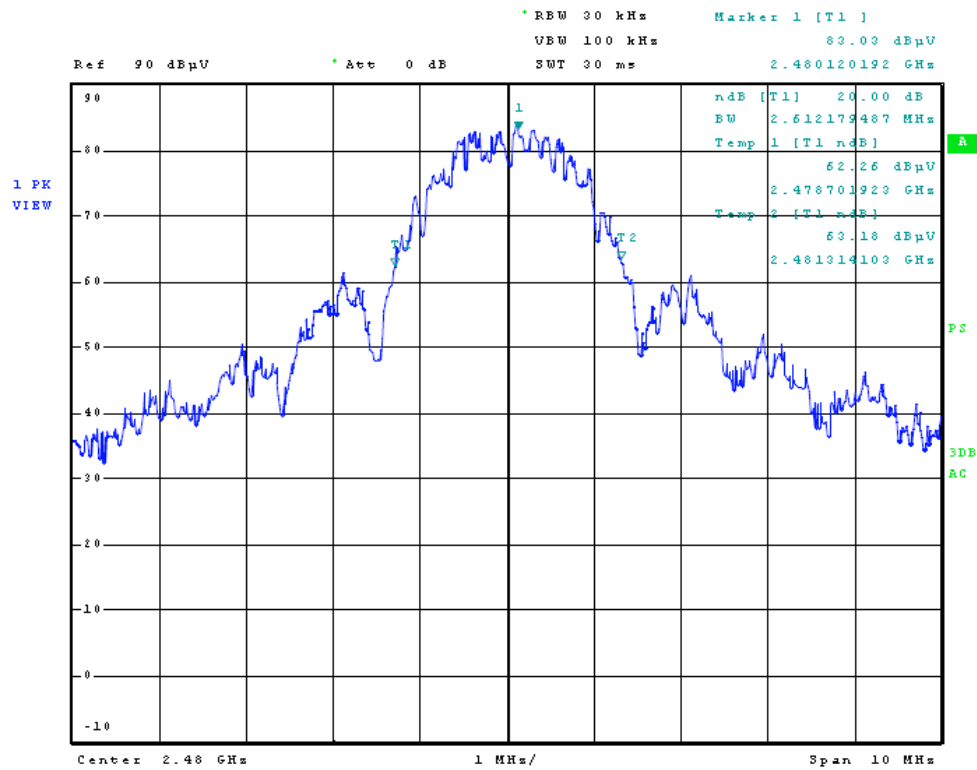


Figure 3 Occupied Bandwidth (high channel)

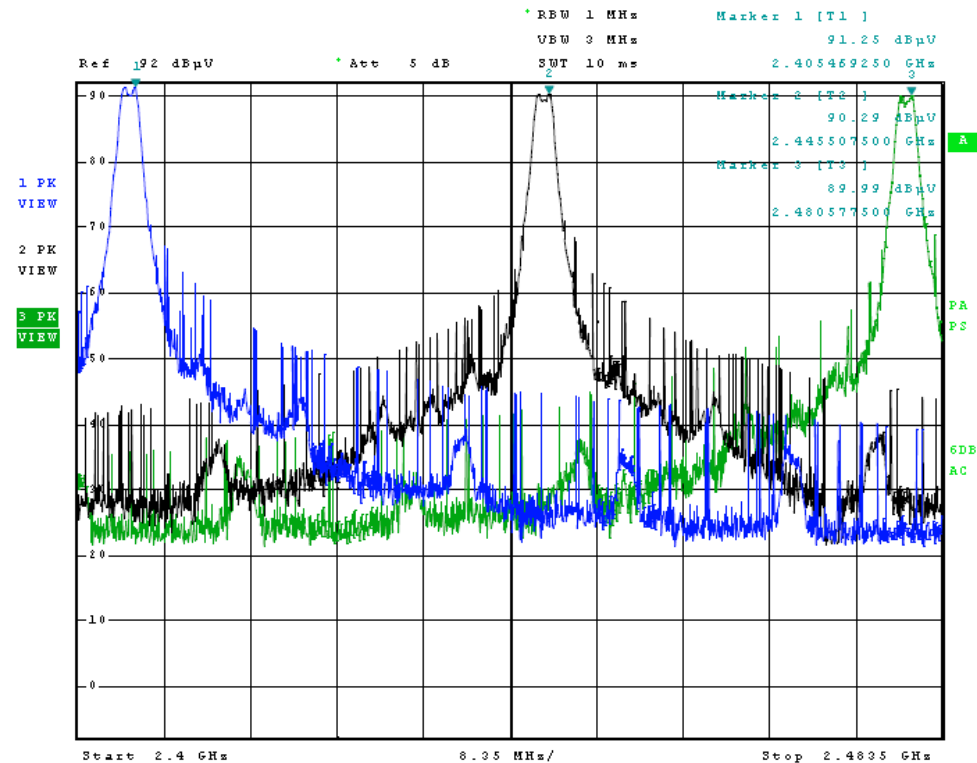


Figure 4 Operation across frequency band

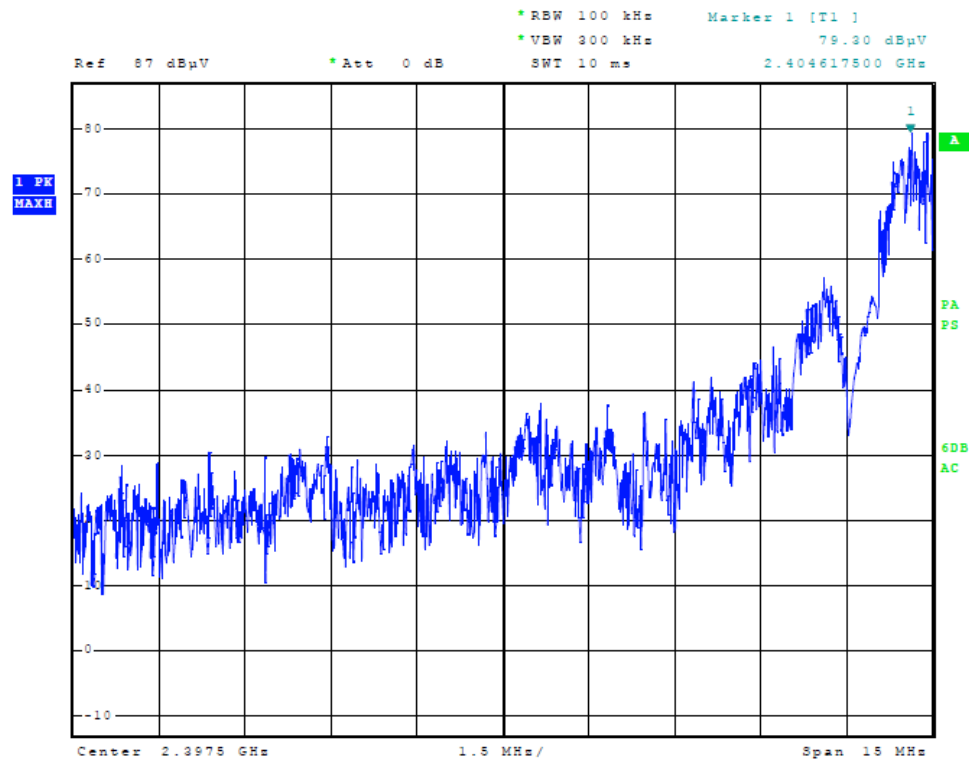


Figure 5 Low Frequency Band Edge

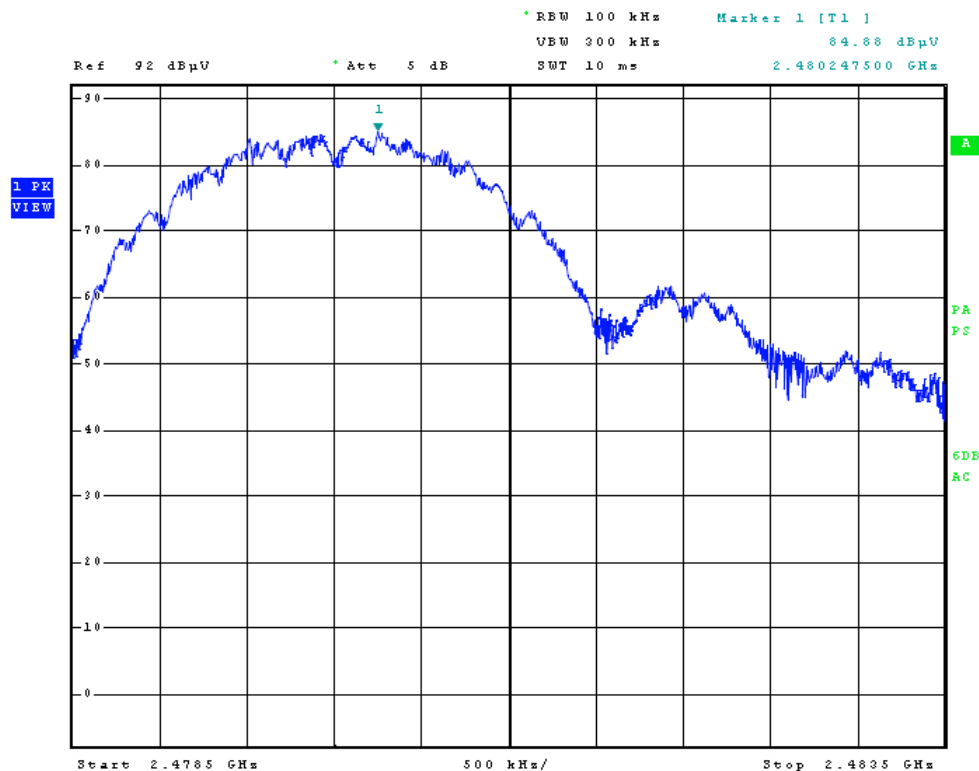


Figure 6 High Frequency Band Edge

**Table 3 Transmitter Radiated Emissions**

Frequency in MHz	Horizontal Peak (dBμV/m)	Horizontal Quasi-Peak (dBμV/m)	Horizontal Average (dBμV/m)	Vertical Peak (dBμV/m)	Vertical Quasi-Peak (dBμV/m)	Vertical Average (dBμV/m)	Limit @ 3m (dBμV/m)
2405.0	92.0	N/A	59.2	94.1	N/A	61.0	94.0
4810.0	47.6	N/A	34.8	48.6	N/A	34.8	54.0
7215.0	49.5	N/A	36.6	49.8	N/A	36.6	54.0
9620.0	51.3	N/A	38.4	51.6	N/A	38.3	54.0
12025.0	49.0	N/A	36.6	49.3	N/A	36.5	54.0
14430.0	56.2	N/A	43.6	56.4	N/A	43.5	54.0
2445.0	86.7	N/A	54.4	93.1	N/A	60.1	94.0
4890.0	49.6	N/A	35.1	50.9	N/A	35.2	54.0
7335.0	49.2	N/A	36.0	49.0	N/A	35.8	54.0
9780.0	51.6	N/A	38.3	51.0	N/A	38.3	54.0
12225.0	49.9	N/A	36.1	49.6	N/A	36.4	54.0
14670.0	57.6	N/A	45.0	58.3	N/A	45.4	54.0
2480.0	89.3	N/A	56.2	92.5	N/A	59.6	94.0
4960.0	51.4	N/A	34.8	52.2	N/A	35.0	54.0
7440.0	49.6	N/A	36.2	48.8	N/A	36.2	54.0
9920.0	51.2	N/A	38.0	50.8	N/A	38.1	54.0
12400.0	50.9	N/A	37.6	50.8	N/A	38.0	54.0
14880.0	55.0	N/A	42.3	45.7	N/A	42.6	54.0

Other emissions present had amplitudes at least 20 dB below the limit. Peak and Quasi-Peak amplitude emissions are recorded above for frequency range of 26-1000 MHz. Peak and Average amplitude emissions are recorded above for frequency range above 1000 MHz.



### ***Summary of Results for Transmitter Radiated Emissions***

The EUT demonstrated compliance with the radiated emissions requirements of FCC CFR 47 Part 15.249, RSS-210 and other applicable standards for Intentional Radiators. The EUT transmit worst-case configuration demonstrated minimum margin of -33.0 dB below the limit for average emission limit. The EUT worst-case configuration demonstrated minimum radiated harmonic emission margin of -8.6 dB below the limits. No other radiated emissions were found in the restricted bands less than 20 dB below limits than those recorded in this report. Other emissions were present with amplitudes at least 20 dB below the limits.



NVLAP Lab Code 200087-0

## **Annex**

- Annex A Measurement Uncertainty Calculations
- Annex B Rogers Labs Test Equipment List
- Annex C Rogers Qualifications
- Annex D FCC Test Site Registration Letter
- Annex E Industry Canada Test Site Registration Letter

## Annex A Measurement Uncertainty Calculations

Measurement uncertainty calculations were made for the laboratory. Result of measurement uncertainty calculations are recorded below for AC line conducted and radiated emission measurements.

Measurement Uncertainty	$U_{(E)}$	$U_{(lab)}$
3 Meter Horizontal 30-200 MHz Measurements	2.08	4.16
3 Meter Vertical 30-200 MHz Measurements	2.16	4.33
3 Meter Vertical Measurements 200-1000 MHz	2.99	5.97
10 Meter Horizontal Measurements 30-200 MHz	2.07	4.15
10 Meter Vertical Measurements 30-200 MHz	2.06	4.13
10 Meter Horizontal Measurements 200-1000 MHz	2.32	4.64
10 Meter Vertical Measurements 200-1000 MHz	2.33	4.66
3 Meter Measurements 1-6 GHz	2.57	5.14
3 Meter Measurements 6-18 GHz	2.58	5.16
AC Line Conducted	1.72	3.43





## ***Annex B Rogers Labs Test Equipment List***

<u>Equipment</u>	<u>Calibration Date</u>
Spectrum Analyzer: Rohde & Schwarz ESU40	5/12
Spectrum Analyzer: HP 8562A, HP Adapters: 11518, 11519, and 11520	5/12
Mixers: 11517A, 11970A, 11970K, 11970U, 11970V, 11970W	
Spectrum Analyzer: HP 8591EM	5/12
Antenna: EMCO Biconilog Model: 3143	5/12
Antenna: Sunol Biconilog Model: JB6	10/12
Antenna: EMCO Log Periodic Model: 3147	10/12
Antenna: Antenna Research Biconical Model: BCD 235	10/12
LISN: Compliance Design Model: FCC-LISN-2.Mod.cd, 50 $\mu$ Hy/50 ohm/0.1 $\mu$ f	10/12
R.F. Preamp PA-010	10/12
R.F. Preamp CPPA-102	10/12
R.F. Preamp PA-122	10/12
Cable assembly: (L1) consisting of Belden RG-58, HP11509A, CAT-3	10/12
Cable assembly: (L2) consisting of Belden RG-58, HP11509A, CAT-3	10/12
Cable: (L3) Belden 8268	10/12
Cable: Time Microwave: 4M-750HF290-750	10/12
Cable: Time Microwave: 10M-750HF290-750	10/12
Frequency Counter: Leader LDC825	2/12
Oscilloscope Scope: Tektronix 2230	2/12
Wattmeter: Bird 43 with 50 Ohm Load 8085	2/12
Power Supplies: Sorensen SRL 20-25, SRL 40-25, DCR 150, DCR 140	2/12
R.F. Generators: HP 606A, HP 8614A, HP 8640B	2/12
R.F. Power Amp 65W Model: 470-A-1010	2/12
R.F. Power Amp 50W M185- 10-501	2/12
R.F. Power Amp A.R. Model: 10W 1010M7	2/12
R.F. Power Amp EIN Model: A301	2/12
LISN: Compliance Eng. Model 240/20	2/12
LISN: Fischer Custom Communications Model: FCC-LISN-50-16-2-08	2/12
Antenna: EMCO Dipole Set 3121C	2/12
Antenna: Compliance Design B-101	2/12
Antenna: Solar 9229-1 & 9230-1	2/12
Antenna: EMCO 6509	2/12
Audio Oscillator: HP 201CD	2/12
Peavey Power Amp Model: IPS 801	2/12
ELGAR Model: 1751	2/12
ELGAR Model: TG 704A-3D	2/12
ESD Test Set 2010i	2/12
Fast Transient Burst Generator Model: EFT/B-101	2/12
Field Intensity Meter: EFM-018	2/12
KEYTEK Ecat Surge Generator	2/12
Shielded Room 5 M x 3 M x 3.0 M	



## ***Annex C Rogers Qualifications***

***Scot D. Rogers, Engineer***

### **Rogers Labs, Inc.**

Mr. Rogers has approximately 17-years' experience in the field of electronics. Six years working in the automated controls industry and 6 years working with the design, development and testing of radio communications and electronic equipment.

#### **Positions Held**

Systems Engineer: A/C Controls Mfg. Co., Inc. 6 Years

Electrical Engineer: Rogers Consulting Labs, Inc. 5 Years

Electrical Engineer: Rogers Labs, Inc. Current

#### **Educational Background**

Bachelor of Science Degree in Electrical Engineering from Kansas State University

Bachelor of Science Degree in Business Administration Kansas State University

Several Specialized Training courses and seminars pertaining to Microprocessors and Software programming



NVLAP Lab Code 200087-0

**Annex D FCC Test Site Registration Letter**

**FEDERAL COMMUNICATIONS COMMISSION**

**Laboratory Division  
7435 Oakland Mills Road  
Columbia, MD 21046**

November 01, 2011

Registration Number: 90910

Rogers Labs, Inc.  
4405 West 259th Terrace,  
Louisburg, KS 66053

Attention: Scot Rogers,

Re: Measurement facility located at Louisburg  
3 & 10 meter site  
Date of Renewal: November 01, 2011

Dear Sir or Madam:

Your request for renewal of the registration of the subject measurement facility has been received. The information submitted has been placed in your file and the registration has been renewed. The name of your organization will remain on the list of facilities whose measurement data will be accepted in conjunction with applications for Certification under Parts 15 or 18 of the Commission's Rules. Please note that the file must be updated for any changes made to the facility and the registration must be renewed at least every three years.

Measurement facilities that have indicated that they are available to the public to perform measurement services on a fee basis may be found on the FCC website [www.fcc.gov](http://www.fcc.gov) under E-Filing, OET Equipment Authorization Electronic Filing, Test Firms.

Sincerely,

Phyllis Parrish  
Industry Analyst

Rogers Labs, Inc.  
4405 West 259<sup>th</sup> Terrace  
Louisburg, KS 66053  
Phone/Fax: (913) 837-3214  
Revision 1

Interactive Technologies, Inc.  
Model: IQ69-2.4  
Test #: 130103  
Test to: FCC CFR 47 15.249, RSS 210  
File: Interactive Tech IQ6924m TstRpt 130103

FCC ID: ULP-IQ6924  
SN: ENG1  
Date: February 2, 2013  
Page 27 of 28



NVLAP Lab Code 200087-0

## **Annex E Industry Canada Test Site Registration Letter**



December 28, 2011

OUR FILE: 46405-3041

Submission No: 152685

Rogers Labs Inc.  
4405 West 259th Terrance  
Louisburg, KS, 66053  
USA

**Attention:** Mr. Scot D. Rogers

Dear Sir/Madame:

The Bureau has received your application for the renewal of 3/10m OATS. Be advised that the information received was satisfactory to Industry Canada. The following number(s) is now associated to the site(s) for which registration / renewal was sought ( **Site# 3041A-1** ). Please reference the appropriate site number in the body of test reports containing measurements performed on the site. In addition, please keep for your records the following information;

- The company address code associated to the site(s) located at the above address is: **3041A**

Furthermore, to obtain or renew a unique site number, the applicant shall demonstrate that the site has been accredited to ANSI C63.4-2003 or later. A scope of accreditation indicating the accreditation by a recognized accreditation body to ANSI C63.4-2003 or later shall be accepted. Please indicate in a letter the previous assigned site number if applicable and the type of site (example: 3 metre OATS or 3 metre chamber). If the test facility is not accredited to ANSI C63.4-2003 or later, the test facility shall submit test data demonstrating full compliance with the ANSI standard. The Bureau will evaluate the filing to determine if recognition shall be granted.

The frequency for re-validation of the test site and the information that is required to be filed or retained by the testing party shall comply with the requirements established by the accrediting organization. However, in all cases, test site re-validation shall occur on an interval not to **exceed three years**. There is no fee or form associated with an OATS filing. OATS submissions are encouraged to be submitted electronically to the Bureau using the following URL;

[http://strategis.ic.gc.ca/epic/internet/inceb-bhst.nsf/en/h\\_tt00052e.html](http://strategis.ic.gc.ca/epic/internet/inceb-bhst.nsf/en/h_tt00052e.html).

If you have any questions, you may contact the Bureau by e-mail at [certification.bureau@ic.gc.ca](mailto:certification.bureau@ic.gc.ca) Please reference our file and submission number above for all correspondence.

Yours sincerely,

Dalwinder Gill  
For: Wireless Laboratory Manager  
**Certification and Engineering Bureau**  
3701 Carling Ave., Building 94  
P.O. Box 11490, Station "H"  
Ottawa, Ontario K2H 8S2  
Email: [dalwinder.gill@ic.gc.ca](mailto:dalwinder.gill@ic.gc.ca)  
Tel. No. (613) 998-8363  
Fax. No. (613) 990-4752

Rogers Labs, Inc.  
4405 West 259<sup>th</sup> Terrance  
Louisburg, KS 66053  
Phone/Fax: (913) 837-3214  
Revision 1

Interactive Technologies, Inc.  
Model: IQ69-2.4  
Test #: 130103  
Test to: FCC CFR 47 15.249, RSS 210  
File: Interactive Tech IQ6924m TstRpt 130103

FCC ID: ULP-IQ6924  
SN: ENG1  
Date: February 2, 2013  
Page 28 of 28