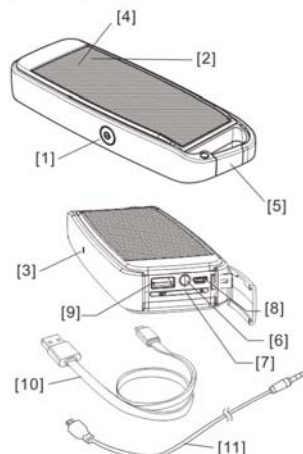


## 'CARRI' Splash Proof Power Bank Bluetooth speaker 2-in-1 combo (for smart phones; with NFC pairing function)

- [1] Bluetooth speaker switch
- [2] Bluetooth indication LED
- [3] NFC sensor position (optional)
- [4] built-in mic. for speaker phone function
- [5] built-in carabiner
- [6] charger switch
- [7] 4 LEDs display for charger indication
- [8] input recharging port – micro USB
- [9] output charging port – standard USB
- [10] recharge/charge cord
- [11] AUX - 3.5mm audio cord

### Product Features

- 'CARRI' sporty design with built-in carabiner
- IPX-4 splash proof for outdoor portable
- 4400mAh Li-ion for power back up
- Bluetooth v3.0 wireless connection up to 10M
- high fidelity 5W speaker
- Co-axial bass enhancer for deeper bass
- NFC pairing option
- speaker phone function (built-in mic.)
- excellent all-time smart phones' companion
- AUX 3.5mm audio input via. accessory cable
- battery level and charging indications

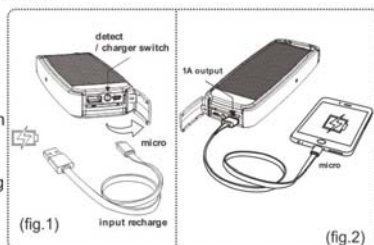


This superb sound speaker handy device is compliant with Bluetooth v3.0 wireless standard, and powered by its built-in battery which is rechargeable by power from USB AC-DC charger of your smart phone. Its built-in 4400mAh Li-ion battery also feature power back up for charging your smart phone or other portable devices via. USB output port. All functions packed in a sporty, outdoor design with carabiner which is compact and portable. An ideal wireless audio plus backup power, all-time portable companion for smart phones.

### Recharging this power bank speaker

Open the rubber cover as shown (fig.1), connect the micro USB port [8] with the recharge cord [10] and its USB plug to an USB port power source at the other end (AC-DC charger of your smart phone). The 4 blue LEDs will light up and flashing to indicate recharging this power bank speaker. When it is fully recharged (approx. between 5-8 hrs every recharging), all 4 LEDs will stop flashing and stay lit. Then you can unplug the charging cable.

(Note: during recharging your power bank speaker, you cannot use its standard USB port for output charging at the same time)



### Checking your power bank battery level

Open the rubber cover as shown (fig.1), press the charger switch [6] once to turn on level checking. If all 4 charger LEDs [7] are lit = >90% full,

If only 1-3 LEDs are lit = 20-80%,

If only 1 LED is lit and flashing steadily (every sec) = 10-20% only, and you have to recharge the power bank as soon as possible.

If power level < 10%, the power bank will be OFF automatically (refer to "Recharging this power bank speaker" paragraph above)

### Charging your devices

Open the rubber cover as shown (fig.2), connect the charge cord [10] to the standard USB port [9] of the power bank. Then connect the micro USB pin end to your smart phone or device with micro USB input jack. (for iPhone5 or above 'lightning' jacks, a separate micro-to-lightning converter may be provided as optional accessory). Press the charger switch [6] once to turn on the power pack, and the output LEDs [7] will lit continuously to show it is charging your device. In approx. 30 sec. if the product does not detect output loading, it will turn off automatically. Then you need to repeat above steps to turn on the power pack again before you can charge up your devices.

### NFC™ Pairing the Bluetooth speaker with your phone

Turn on the speaker by press & hold for 3 sec. the speaker switch [1] at the side, and then blue LED is lit at the front speaker grille [2] and you can hear a sweep tone indicates speaker is ready.

If your smart phone is NFC enabled,

a) Firstly, locate the NFC antenna spot on your smart phone (fig.3)

b) NFC antenna is now 'at the side' [3] of our PB-0449N device

c) Align NFC antennas as close as possible, you will hear a 'cling' sound when they matched (fig.4)

d) Wait for a few second and you will hear a "Bloop" sound from the speaker and its blue LED will lit continuously. The pairing is completed now.

### Note-

1. "The N-Mark is a trademark or registered trademark of NFC Forum, Inc. in the United States and in other countries."
2. Some phone models are NFC enabled, but their NFC Apps were not built-in. For these models you will need to install a NFC Apps and activate the NFC function on your phone—Please visit our website to download the driver installer: <http://www.manova.com.hk/download.php>

### Pairing the speaker (manually)- if your phone is NOT NFC enabled

a.) Turn on the speaker by press & hold for 3 sec. the speaker switch [1] at the top panel, and then blue LED is lit and flashes steadily around the switch [1] and you can hear a sweep tone that indicates speaker is ready. For first time use, the blue LED will be flashing fast (8 times every sec.) to show it is now ready for pairing. Browse your smart phone Bluetooth device list found, and select the one named 'CARRI' to confirm pairing on your smart phone. You will hear a beep tone "Bloop" on the speakers which is sent from your phone, and then the speakers' blue LED is lit continuously. Pairing connection is successful then.

b.) When you need to disconnect the speaker, you first switch off Bluetooth function on your smart phone, the speaker's blue LED will flash slowly (1 time every sec.) Then you switch to OFF the speaker (press & hold for 4-5 sec. the speaker switch [1] again), the pairing memory will be then kept there. Next time when you turn ON the speaker, it will automatically connect to your smart phone again and blue LED lit continuously on top panel (when your smart phone's Bluetooth function is also ON and nearby <5M).

c) If you need to pair the speaker with a new smart phone, switch off Bluetooth function on your old smart phone first. Then power on your new smart phone's Bluetooth function. After that press & hold for 1-2 sec. the speaker switch [1] until the speakers' blue LED will be flashing fast again (8 times every sec.), and then you repeat steps as in above paragraph a.).

### Call-pick function

When speaker is connected to your smart phone (blue LED lit continuously), whenever there is an incoming call ring, you can press the speaker switch [1] once to pick up and use it as speaker phone. (You may operate your smart phone to transfer the call back to your smart phone) (Press the speaker switch [1] once again will end the call)

### Speaker- How to Use / Controls

Adjust volume: operate from your smart phone or mobile device.

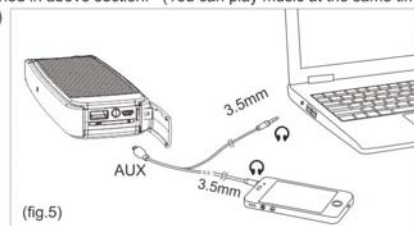
Next/Previous track: operate from your smart phone or mobile device.

During music playback, press the speaker switch [1] once will pause playback, press again to resume play.

If battery power becomes low, there will be some beeping alert sound during playback, and the speaker LED [2] flashes RED and BLUE quickly (8 times every sec., Red light interval every 4 sec.). Then recharge the speaker as mentioned in above section. (You can play music at the same time while recharging the built-in battery...)

You can use the AUX-3.5mm audio cord [9] connect to smart phones or other player devices for music playback (fig.5). Whenever you plug in the micro (AUX) port [8], the Bluetooth wireless connection will be disconnected. You will need to operate the smart phone or player device.

(You will need to operate the smart phone to resume music playback when you disconnect the AUX cable and use it wireless again, and operate the speaker buttons as usual)



### Specifications:

dimensions:	W 185 x D 28 x H 68 mm
product weight:	approx. 270g
Bluetooth wireless connection support multiple pairing:	v3.0 +EDR; class II; typ. 8M visible distance; max. 10M up to 4 devices**
driver:	**This speaker supports pairing 'records' up to 4 devices, but NOT 'connection' to 4 devices at the same time
frequency response (0dB at 1KHz):	dia. 54mm full range
amplifier max. output :	150 Hz to 20,000 Hz (Output S.P.L. -10dB)
signal to noise ratio:	5W (THD=10%, 1KHz@0dB)
operation voltage:	85dB
battery recharging voltage:	min. 3V; max. 4.2V DC
battery recharging current:	typ. 5V; max. 5.5V DC (via. USB AC-DC charger)
drain current (power on, no input):	800mA ~ 1,000mA max.
playback time:	<=35mA
standby time:	up to 40 hours ( fully charged, volume at 1/3 level )
output voltage:	up to 50 hours
output current:	5V
capacity:	2,000 mA max
cell type:	4,400 mAh
cycle life:	3.7V Li-ion (cylindrical) rechargeable batteries x2
DC recharging:	>300 times
Caution and Safety:	5 ~ 8 hours (via. USB AC-DC 1A charger)

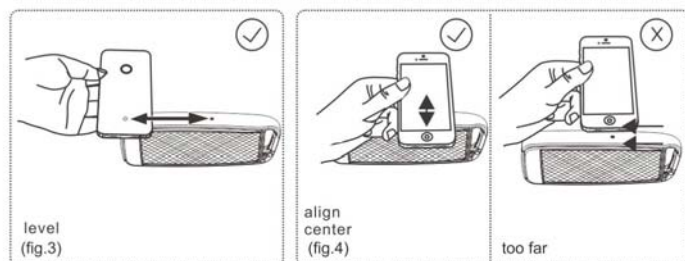
- a) This product has to be recharged regularly - even if it is not used, recommend to recharge this product fully once a month
- b) If this product is not used, or stored for a long time ( e.g. > 2-6 months ), the first time you recharge it need to plug it and wait for 10-30 mins., for the battery to 'wake up', and then LED lit to indicate normal charging again

1. This product do not support charging for old phone models which required >5V DC charging voltage
2. \*This product must be always kept away from moisture, sunlight and heat. It should be stored at cool and dry places\*
3. Do not dispose this product to fire
4. Be careful of excessive impact, drops that may damage this charger; please discontinue use if damages on the product are found
5. Do not disassemble nor modify the charger in any manner, it will be unsafe and void the warranty

\*The Bluetooth® word mark and logos are registered trademarks owned by Bluetooth SIG, Inc. and any use of such marks by Manova International Limited is under license. Other trademarks and trade names are those of their respective owners.

\*Design and specifications are subject to change per technical needs, without prior notice

\*\*This speaker supports pairing 'records' up to 4 devices, but NOT 'connection' to 4 devices at the same time



### ***FCC Notice***

This device complies with Part 15 of the FCC Rules. Operation is subject to the following two conditions:

(1) This device may not cause harmful interference, and (2) this device must accept any interference received, including interference that may cause undesired operation.

NOTE 1: This equipment has been tested and found to comply with the limits for a Class B digital device, pursuant to part 15 of the FCC Rules. These limits are designed to provide reasonable protection against harmful interference in a residential installation. This equipment generates, uses and can radiate radio frequency energy and, if not installed and used in accordance with the instructions, may cause harmful interference to radio communications. However, there is no guarantee that interference will not occur in a particular installation. If this equipment does cause harmful interference to radio or television reception, which can be determined by turning the equipment off and on, the user is encouraged to try to correct the interference by one or more of the following measures:

- Reorient or relocate the receiving antenna.
- Increase the separation between the equipment and receiver.
- Connect the equipment into an outlet on a circuit different from that to which the receiver is connected.
- Consult the dealer or an experienced radio/TV technician for help.

NOTE 2: Any changes or modifications to this unit not expressly approved by the party responsible for compliance could void the user's authority to operate the equipment.