

US Tech
FCC ID:
IC:
Test Report Number:
Issue Date:
Customer:
Model:

FCC P15.247/RSS-210
UJX-ROAMMOD0001
6715A-ROAMMOD0001
12-0300
July 25, 2012
Acuity Brands
ROAMMOD0001

Internal Photographs



Figure 1- Shielding Removed

All variants have the same circuit under the shielding.

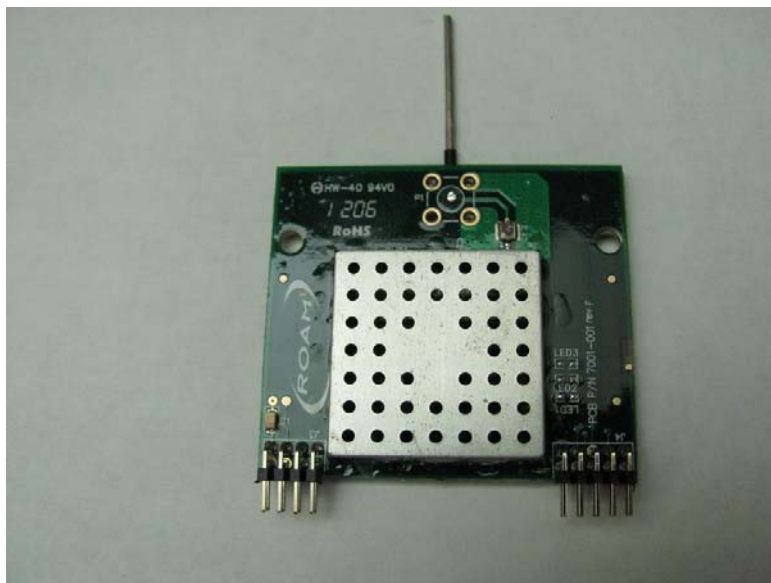


Figure 2- Integral Dipole Front

US Tech
FCC ID:
IC:
Test Report Number:
Issue Date:
Customer:
Model:

FCC P15.247/RSS-210
UJX-ROAMMOD0001
6715A-ROAMMOD0001
12-0300
July 25, 2012
Acuity Brands
ROAMMOD0001

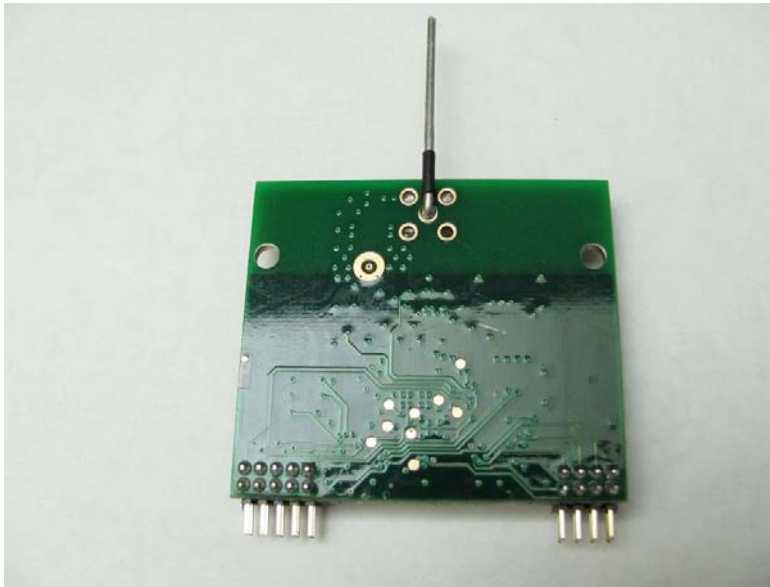


Figure 3- Integral Dipole Rear



Figure 4- Mica/PCB Front

US Tech
FCC ID:
IC:
Test Report Number:
Issue Date:
Customer:
Model:

FCC P15.247/RSS-210
UJX-ROAMMOD0001
6715A-ROAMMOD0001
12-0300
July 25, 2012
Acuity Brands
ROAMMOD0001

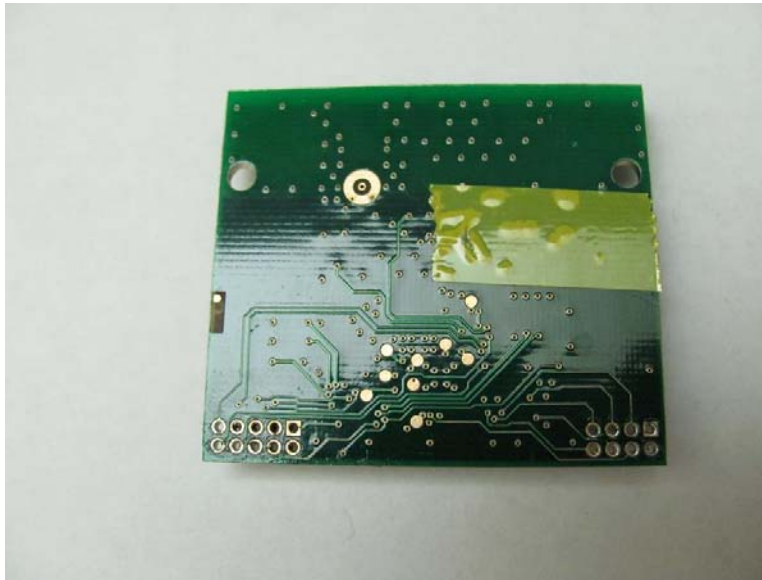


Figure 5- Mica/PCB Rear



Figure 6- reverse sma Front (Monopole)

US Tech
FCC ID:
IC:
Test Report Number:
Issue Date:
Customer:
Model:

FCC P15.247/RSS-210
UJX-ROAMMOD0001
6715A-ROAMMOD0001
12-0300
July 25, 2012
Acuity Brands
ROAMMOD0001



Figure 7-reverse sma Rear (Monopole)