

Flying Angel

3G Wireless Data Card

User Manual

Updated: 03/2009

Table of contents

Chapter 1 Product Information	3
1.1 Feature summary	3
1.1.1 Packing list.....	3
1.2 System requirements	4
1.3 Product Specifications.....	5
1.3.1 Wireless Network Capabilities	5
1.3.2 Output power	5
1.3.3 Environmental Specifications.....	6
1.4 Basic Introduction to the Flying Angel.....	6
1.4.1 Indicator Light.....	6
1.4.2 Before using the Flying Angel 3G Wireless Data Card.....	7
Chapter 2 Prepare the Flying Angel.....	8
2.1 Inserting the SIM Card and MicroSD Memory Card	8
2.2 Removing the SIM card and MicroSD Memory Card	12
Chapter 3 Connect the Flying Angel 3G Wireless Data Card to your PC	15
Chapter 4 Installation and Software – Windows PC	17
4.1 Install Connection Software.....	17
4.2 Using the Flying Angel 3G Wireless Data Card - PC	22
4.2.1 Flying Angel Connection Manager Dashboard.....	23
4.2.2 Set Up Your Connection Profile	26
4.2.3 Internet Options	34
4.2.4 Flying Angel Explorer	37
4.2.5 Manage Your Settings.....	43
Chapter 5 Installation and Software – Macintosh	51
5.1 Install Connection Software.....	51
5.2 Using the Flying Angel 3G Wireless Data Card - Mac	53
5.2.1 Connection Manager Tools.....	53
5.2.2 Set Up Your Connection Profile.....	54
5.2.3 Connect to the Internet.....	55
5.2.4 SMS Messages	56
5.2.5 PhoneBook	57
5.2.6 Settings.....	57

Chapter 1 Product Information

Thank you for choosing the **Flying Angel 3G Wireless Data Card**. This wireless modem provides a high-speed connection to the Internet using your PC and a wireless communications account. Once you are connected, you can surf the Internet using a web browser, send and receive e-mail, and access a virtual private network (VPN) or corporate network, without the need for a phone line or network cable.

Please read through this user manual before using the Flying Angel 3G Wireless Data Card to properly install the connection software and hardware, and ensure that the device is ready for use.

1.1 Feature summary

- USB wireless modem
- USB 2.0 high-speed connection
- Dual 3G and EDGE wireless network coverage
- Compatible with most PCs and laptops with Windows 2000, Windows XP, Windows Vista or Mac OS.
- Internal antenna
- Easy plug-and-play software installation and set up
- Data download speeds up to 7.2 Mbps; uplink speeds up to 2.0 Mbps
(*actual speeds may vary based on network configurations and other factors*)
- Quickly connect to the Internet, e-mail and other web services using your wireless account
- Send and receive SMS messages from your computer (*software included*)
- MicroSD expandable memory card slot for up to 4GB of portable storage (*card purchased separately*)

1.1.1 Packing list

The Flying Angel package contains the following items:

- 1 (one) Flying Angel 3G Wireless Data Card
- Connection management software for Windows and Mac pre-loaded into device
- User Guide
- Quick Start Guide for Windows and Mac

1.2 System requirements

To use the Flying Angel 3G Wireless Data Card, you require the following:

- **An active account with a wireless service provider** operating a high-speed third generation (3G) HSDPA wireless network or EDGE wireless network
- **SIM Card:** A SIM card is a small portable memory chip used in cellular telephones. The SIM holds personal identity information, cell phone number, phone book, text messages and other data. SIM cards are available from your wireless service provider.
- **MicroSD Memory Card (optional):** The Flying Angel includes a card holder for a microSD memory card to provide up to 4GB of portable file, photo, music and video storage (card purchased separately from wireless service providers and a variety of retailers). The device does not require a microSD memory card to connect to the Internet.

The Flying Angel 3G Wireless Data Card is supported on the following computer operating systems:

Windows

- Windows Vista
- Windows XP (Home and Professional versions)
- Windows 2000

Macintosh

- Mac OS X v10.4 or newer

To use the Flying Angel 3G Wireless Data Card on a PC with Windows, you require the following system resources:

- 1 USB Type A slot (USB 2.0)
- 40MB hard disk space

To use the Flying Angel 3G Wireless Data Card on a computer with Macintosh OS X, you require the following system resources:

- 1 USB Type A slot (USB 2.0)
- 1.30 MB hard disk space

Flying Angel 3G Wireless Data Card Software

The Flying Angel 3G Wireless Data Card comes with the following connection management software to manage the modem and monitor your connections:

- Flying Angel Connection Manager software for Windows
- Flying Angel Connection Manager software for Mac

- Driver software to interface between the Flying Angel 3G Wireless Data Card and your Windows or Mac operating system.

Note: *this software must be installed before using your Flying Angel 3G Wireless Data Card.*

1.3 Product Specifications

1.3.1 Wireless Network Capabilities

The Flying Angel 3G Wireless Data Card operates over a type of wireless network called HSDPA. HSDPA technology provides a variety of connectivity features, depending on your service provider and account. The Flying Angel operates with the following capabilities:

UMTS 850	Uplink	824~849MHz
	Downlink	869~894MHz
UMTS1900	Uplink	1850~1910MHz
	Downlink	1930~1990MHz
UMTS 2100	Uplink	1920~1980MHz
	Downlink	2110~2170MHz
GSM 850	Uplink	824~849MHz
	Downlink	869~894MHz
EGSM 900	Uplink	880~915MHz
	Downlink	925~960MHz
DCS 1800	Uplink	1710~1785MHz
	Downlink	1805~1880MHz
PCS 1900	Uplink	1850~1910 MHz
	Downlink	1930~1990 MHz

1.3.2 Output power

HSDPA/UMTS 850	Output power level class 3 (24 dBm)
HSDPA/UMTS 1900	Output power level class 3 (24 dBm)
HSDPA/UMTS 2100	Output power level class 3 (24 dBm)
GSM 850	Output power level class 5 (32dBm)
EGSM 900	Output power level class 5 (32dBm)
DCS 1800	Output power level class 0 (30 dBm)
PCS 1900	Output power level class 0 (30 dBm)

1.3.3 Environmental Specifications

Operating temperature	-20°C ~ +55°C
Storage temperature	-30°C~ +65°C
Humidity	93%
Vibration (non-operating)	15g peak, 10Hz to 500kHz

1.4 Basic Introduction to the Flying Angel



1.4.1 Indicator Light

The indicator light is located on the outside of the device and will light up once inserted into your PC. It shows the working status of the Flying Angel:

Indicator Light State	Working Status
Off	The device has no power. The Flying Angel is not completely inserted into the USB slot or the computer is in standby mode (which powers down the modem).

Blinking Green	The device has detected a GPRS/EDGE (2G) wireless network, and is ready to connect.
Green	The device has connected with a GPRS/EDGE (2G) wireless network, and is sending or receiving data.
Blinking Blue	The device has detected a 3G wireless network (WCDMA/HSDPA/HSUPA), and is ready to connect.
Blue	The device has connected with a 3G wireless network (WCDMA/HSDPA/HSUPA), and is sending or receiving data.
Red	<p>Warning: a SIM card has not been installed in the Flying Angel, or the SIM card is not properly seated in the SIM card slot.</p> <p>Follow the instructions in Chapter 2 to make sure your SIM card is properly installed.</p>

1.4.2 Before using the Flying Angel 3G Wireless Data Card

Before you can use the Flying Angel 3G Wireless Data Card for the first time you must:

1. Correctly insert a **SIM Card** into the device (card purchased separately).
2. **Optional:** Correctly insert a **microSD memory card** into the device (card purchased separately). The microSD card is only required if you plan to store files, photos, music and video on the device. The Flying Angel does not require a microSD memory card to connect to the Internet.
3. Connect the device with your **PC**.
4. Make sure you have an **active account with a wireless service provider**.

Chapter 2 Prepare the Flying Angel

2.1 Inserting the SIM Card and MicroSD Memory Card

To use your Flying Angel 3G Wireless Data Card to connect to the Internet, you need a SIM card from your wireless service provider. The SIM card contains account information used by your wireless provider's network to validate your access.

Optional: If you require extra storage capability to store files, photos, music and video on the Flying Angel, you may insert a microSD memory card into the device to provide up to 4GB of portable storage (card purchased separately from wireless service providers and a variety of retailers). The device does not require a microSD memory card to connect to the Internet.

To install your SIM card into the Flying Angel 3G Wireless Data Card, follow the steps below:

1. If your SIM is attached to a larger card, detach the SIM and remove any fragments stuck to it.

If you use a SIM card from a mobile phone, follow the manufacturer's instructions to open the phone's cover and remove the SIM.

2. **Open the back cover** of the Flying Angel by sliding it downwards (as shown in figure 2-1).

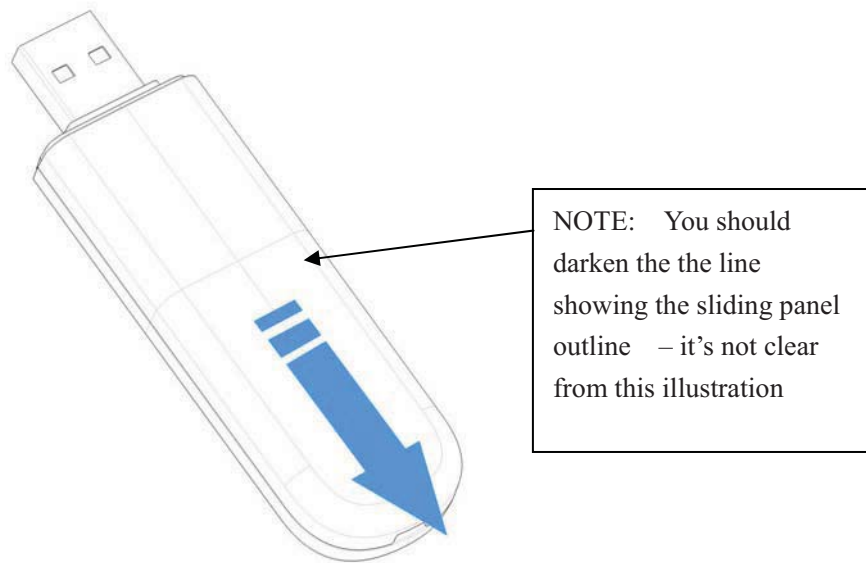


Figure 2-1

3. **Insert SIM card into the thin card slot at the top of the device** (as shown in figure 2-2). Make sure that the SIM card is properly seated in the slot and that the gold-colored contact area on the card is facing downwards.

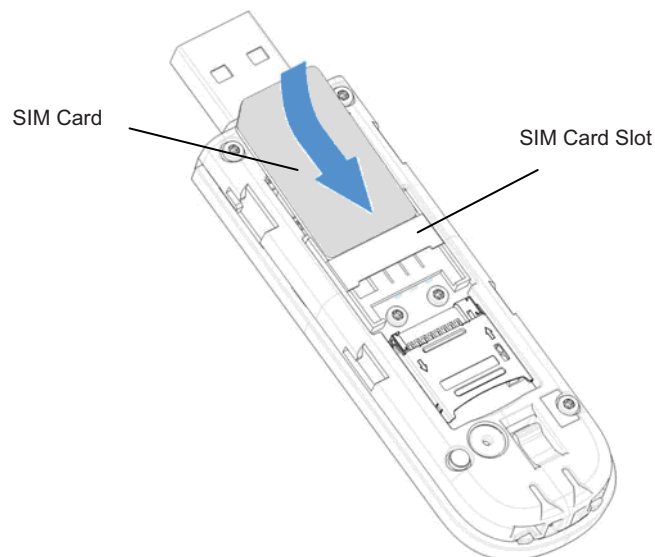


Figure 2-2

4. **Optional: Insert MicroSD Memory Card into the card holder at the bottom of the device.** (The microSD card provides enhanced storage capabilities and is not required to connect to the Internet.)

- a) **Open the cover of the microSD memory card holder** (as shown in figure 2-3).

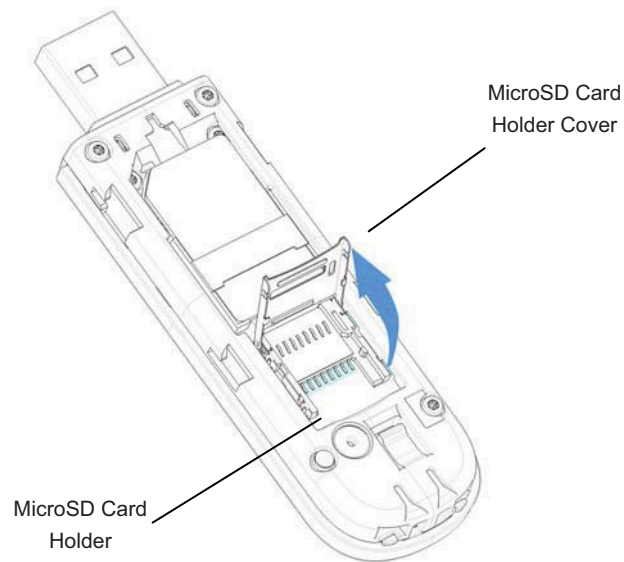


Figure 2-3

- b) **Insert the MicroSD Memory Card into the card holder**, making sure it is properly seated (as shown in figure 2-4).

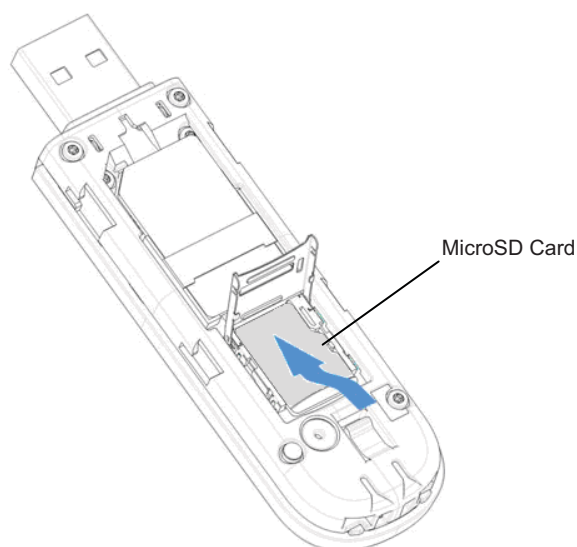


Figure 2-4

- c) **Close the cover of the MicroSD Memory Card holder, and slide the holder gently downward until it snaps into position (figure 2-5).**

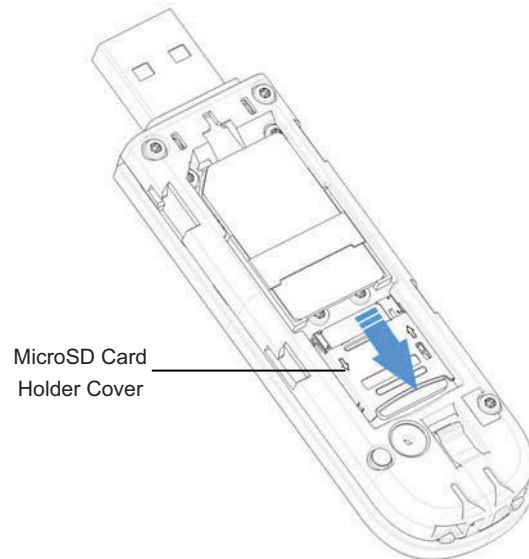


Figure 2-5

5. **Put the back cover of the Flying Angel 3G Wireless Data Card in place and slide it upward until snaps closed (as shown in figure 2-6).**

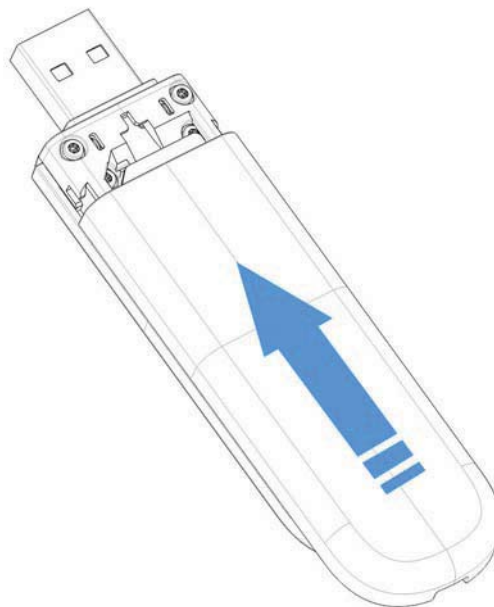


Figure 2-6

2.2 Removing the SIM card and MicroSD Memory Card

Please follow the steps below if you wish to remove the SIM card and/or the (optional) microSD memory card for replacement or upgrade.

1. **Open the back cover of the Flying Angel 3G Wireless Data Card** as directed in section 2.1 above.
2. **Remove the microSD memory card** as follows:
 - a) **Slide the microSD memory card holder upward** (as shown in figure 2-7).

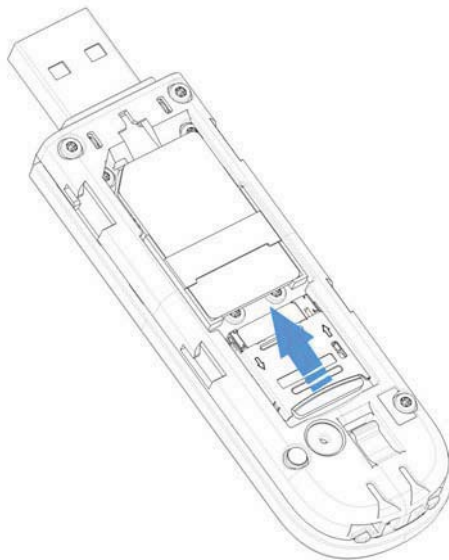


Figure 2-7

- b) **Open the cover of the memory card holder and remove the microSD memory card from the slot** (figure 2-8).

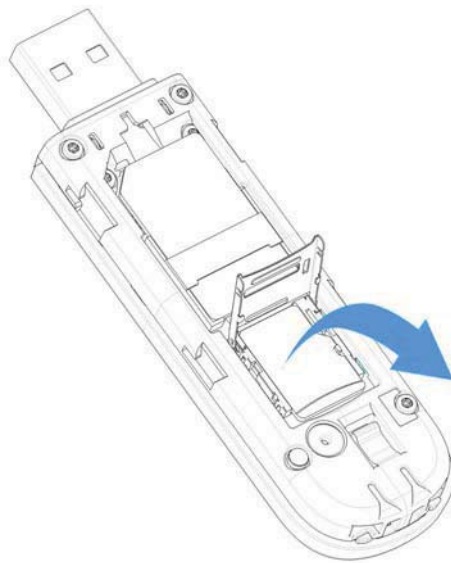


Figure 2-8

- c) **Close the cover of the microSD memory card holder, and slide the holder gently downward** until it snaps into position (figure 2-9).

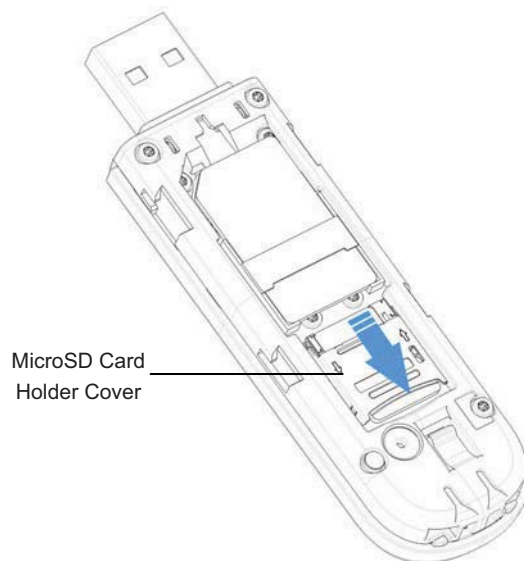
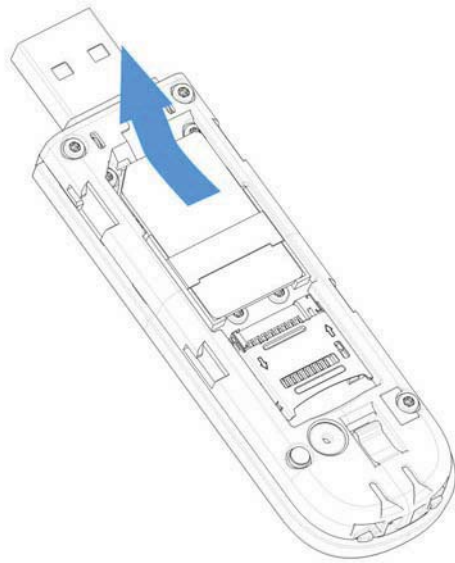


Figure 2-9

3. Remove the SIM card as follows:

- a) **Gently slide SIM card out**, pushing upwards.



4. If replacing the SIM card and microSD memory card, please follow the steps in section 2.1 above.

Chapter 3 Connect the Flying Angel 3G Wireless Data Card to your PC

1. Remove the cover from the USB connector of the device. (See figure 3-1.)

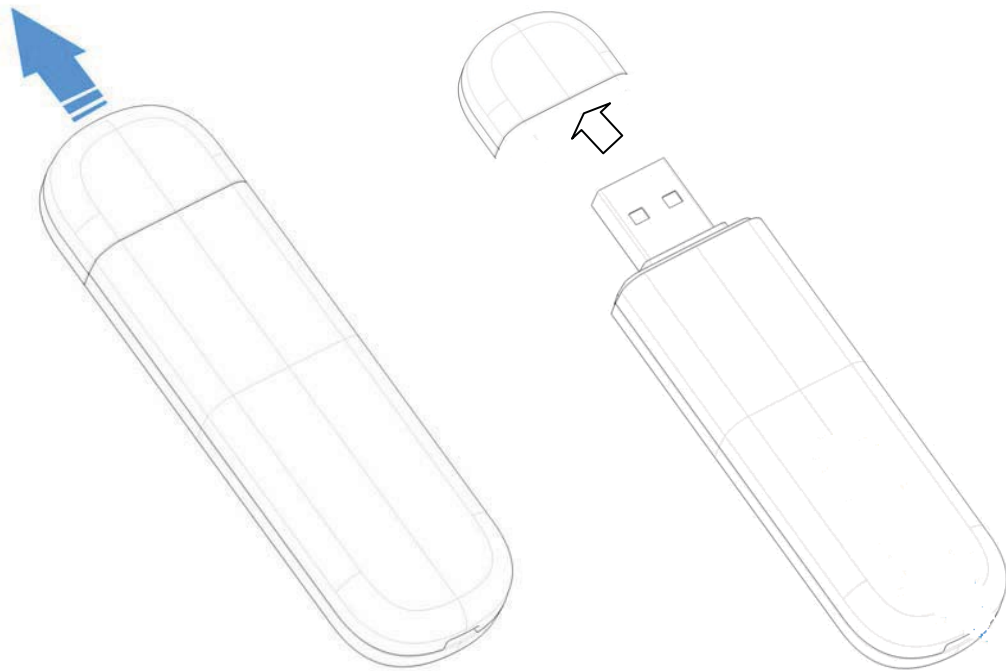


Fig 3-1

2. Insert the USB connector of the modem into a USB port on your computer. (See figure 3-2.)

(Note: An illustration would be helpful here, something like the one below from the Sierra Quickstart guide.)

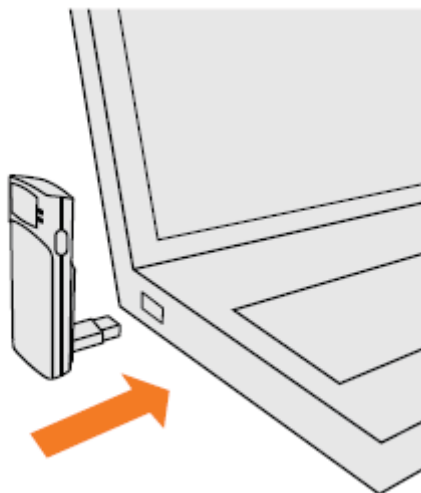


Fig. 3-2

Chapter 4 Installation and Software – Windows PC

4.1 Install Connection Software

The Flying Angel 3G Wireless Data Card comes with the following software which will allow you to connect to the internet, establish modem settings, and manage your data:

- Flying Angel Connection Manager software for Windows
- Driver software to interface between the Flying Angel 3G Wireless Data Card and your computer's operating system.

The first time the Flying Angel 3G Wireless Data Card is inserted in a USB slot in your Windows PC, you will be guided through the following steps to automatically install the Flying Angel Connection Manager software and drivers.

1. Connect the Flying Angel 3G Wireless Data Card to Your PC (See Chapter 3.)

2. Select your preferred language. (See figure 4.1-1.)

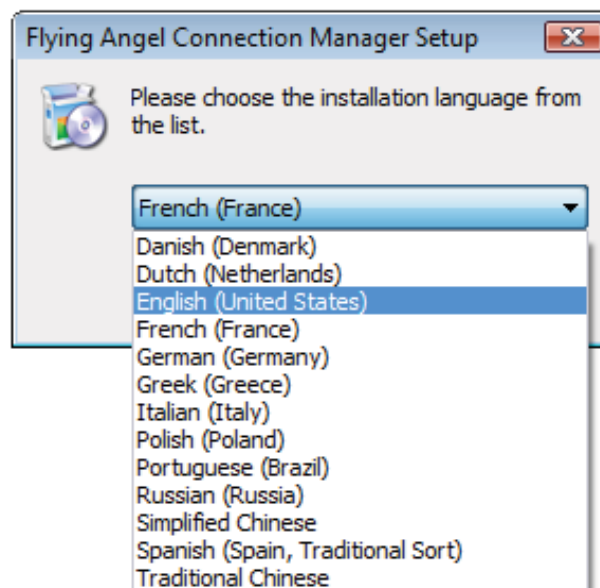


Fig. 4.1-1

3. Click [OK] to start the Flying Angel Connection Manager Setup Wizard (figure 4.1-2).

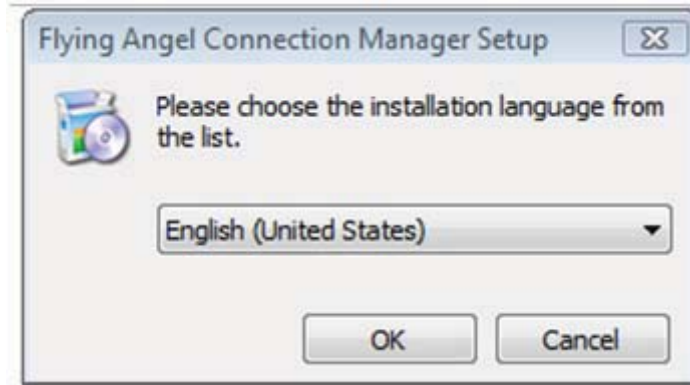


Fig. 4.1-2

4. When the **Flying Angel Connection Manager Setup Wizard** window opens (figure 4.1-3), click **[Next]** to continue.



Fig. 4.1-3

5. Confirm accept the end user license agreement (figure 4.1-4), and then click **[Next]**.

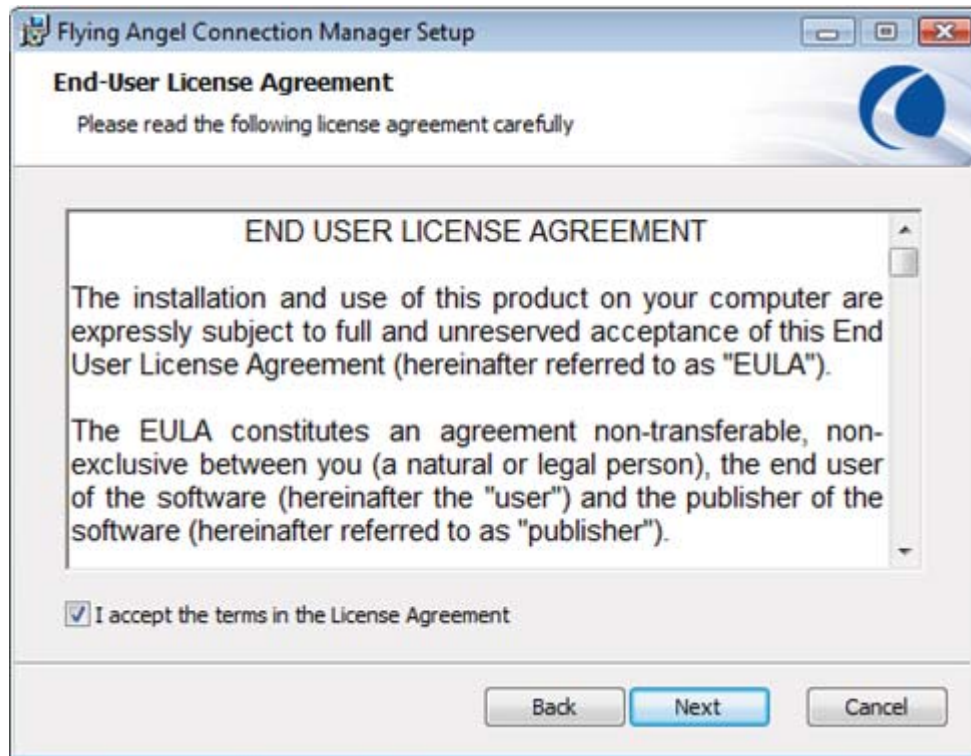


Fig. 4.1-4

6. The Setup Wizard will automatically designate a folder location for the setup files.
(See figure 4.1-5.) To install to the suggested folder, click **[Next]**.

If you want to set up a different location for the setup files, click **[Browse]** to select another folder, then click **[Next]**.

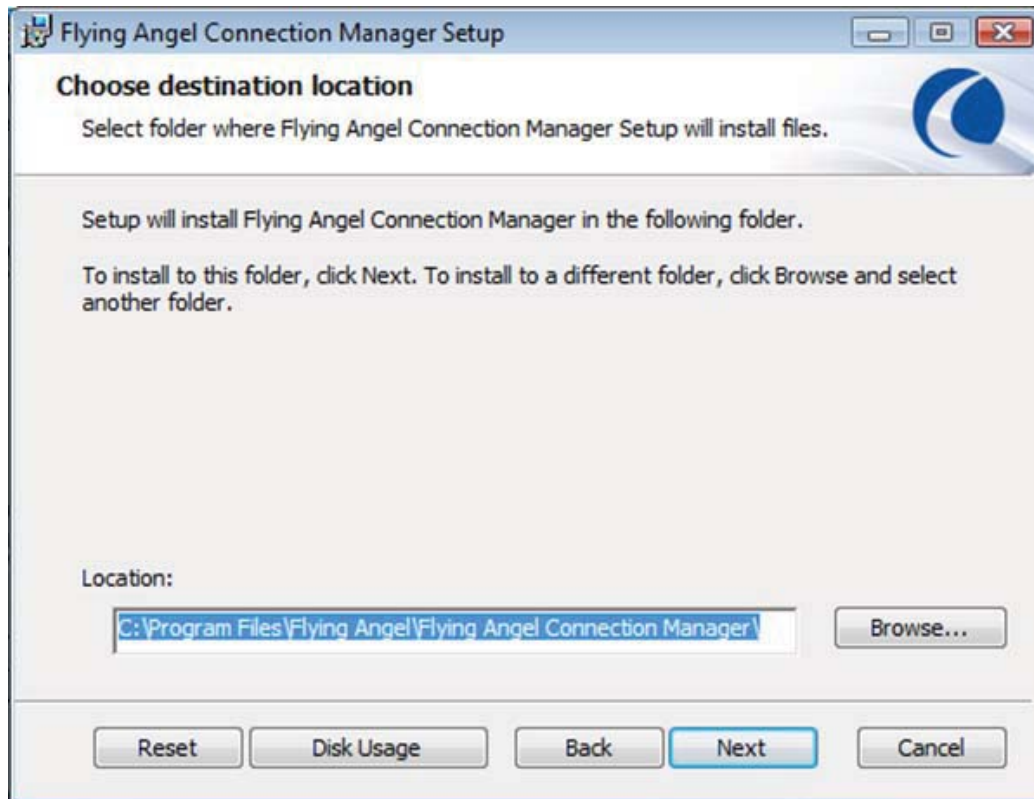


Fig. 4.1-5

7. When you see the **Ready to Install** screen (figure 4.1-6), click **[Install]** to start installation.

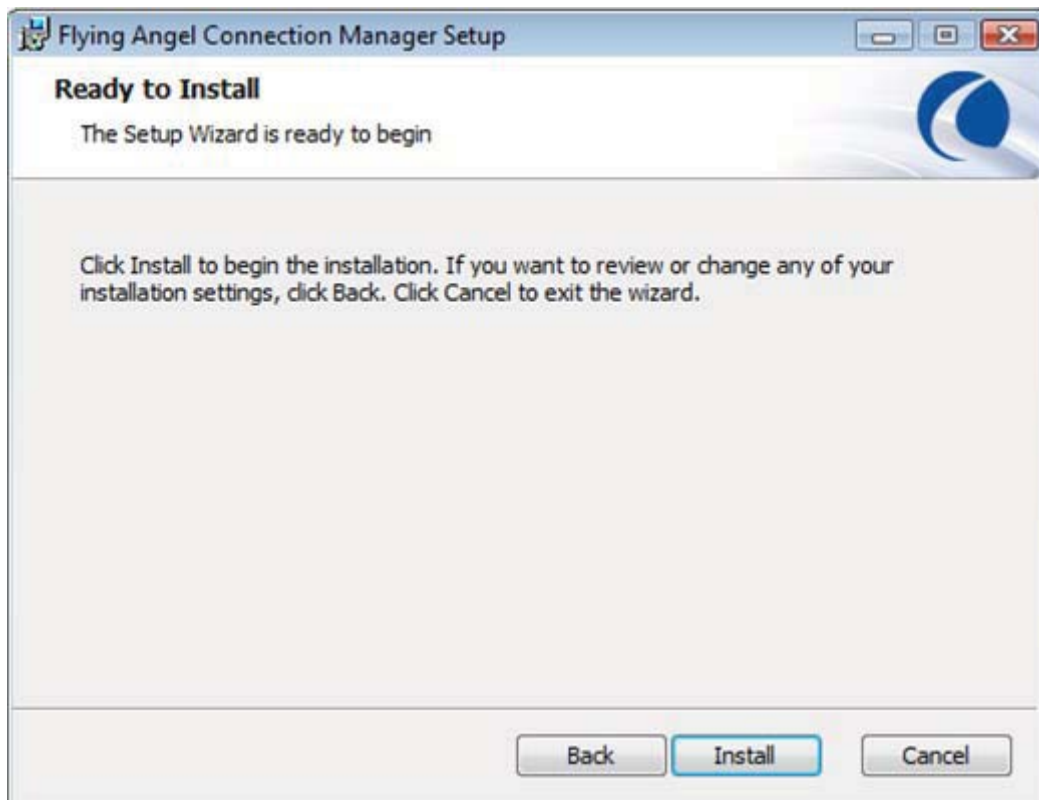


Fig. 4.1-6

8. Software installation will take a few minutes to complete. (See figure 4.1-7.)

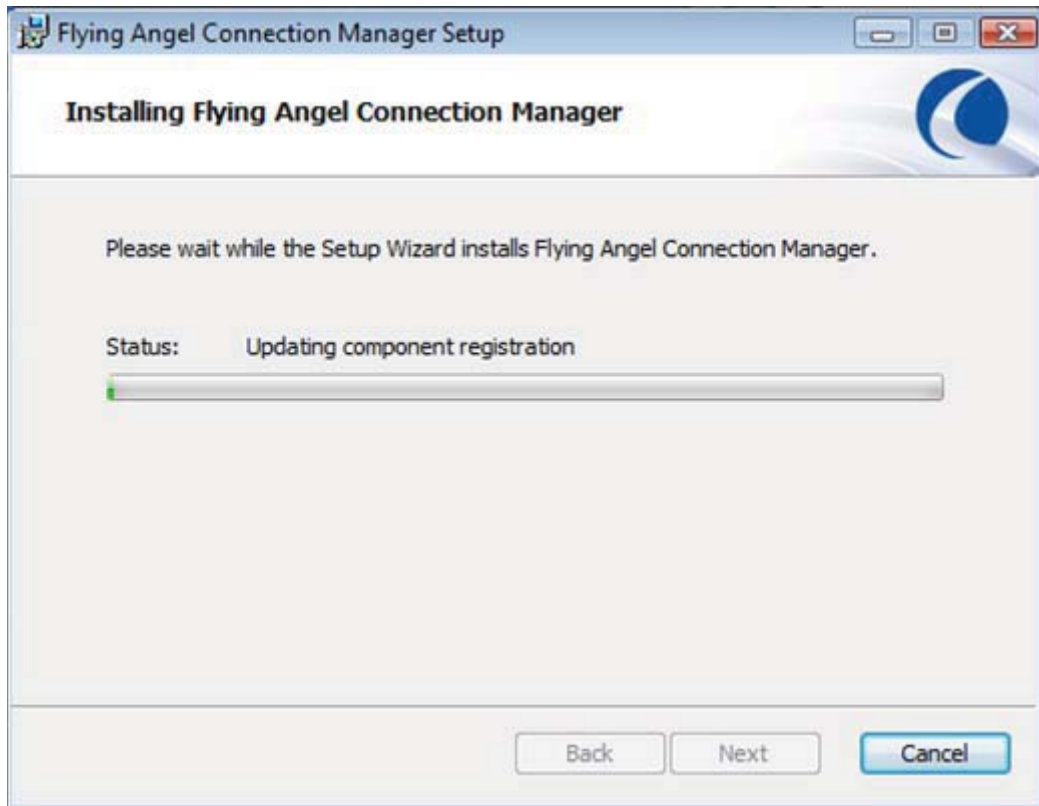


Fig. 4.1-7

9. The final menu screen will pop up when the software is installed (figure 4.1-8).
Click **[Finish]** to complete the installation.

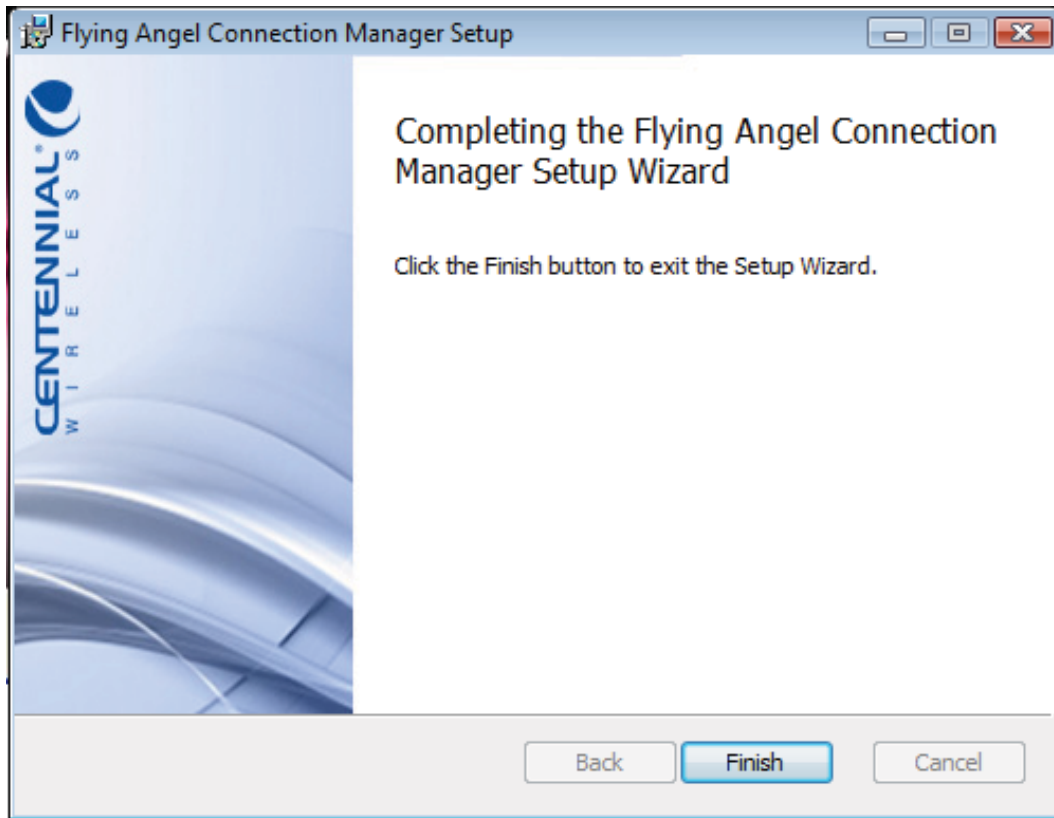


Fig. 4.1-8

4.2 Using the Flying Angel 3G Wireless Data Card - PC

Make sure the Flying Angel 3G Wireless Data Card is connected to a USB port on your PC, and the modem software and drivers are installed as outlined in [Section 4.1](#), above.

When the Flying Angel is properly connected, your PC detects the modem and displays a startup menu in a pop-up window. This startup menu offers you shortcuts to a set of standard modem actions as shown below (figure 4.2-1, table 4.2-2):



Fig. 4.2-1

Table 4.2-2 Flying Angel Connection Manager Startup Menu Detail		
Startup Menu Command	Action Taken	Further Details
Do nothing	Launch Dashboard view of Flying Angel Connection Manager to access the full menu of modem functions.	Chapter 4.2.1 Flying Angel Connection Manager Dashboard
Explore the device (contacts, SMS, ...)	Launch the Flying Angel Explorer window to manage the data saved to the SIM card in the Flying Angel 3G Wireless Data Card, including messages and contacts.	Chapter 4.2.4 Flying Angel Explorer
Connect to the Internet	Launch your default Internet connection.	Chapter 4.2.3 Internet Options
Always ask	Allows you to choose whether or not to launch this shortcut menu whenever your PC detects the Flying Angel 3G Wireless Data Card.	

4.2.1 Flying Angel Connection Manager Dashboard

The Dashboard View of the Flying Angel Connection Manager software (figure 4.2-3) allows you to perform a variety of functions.



Fig. 4.2-3

Flying Angel Connection Manager Dashboard

The icons, buttons, commands, and menu options available in Dashboard view are outlined in table 4-11.

Table 4.2-4 Flying Angel Connection Manager Dashboard: Icons and Buttons		
	Network signal level	Indicates the level of the network signal. The name of the operator detected is shown to the right side of the network signal icon.
	Connect to the Internet	Click to launch the Internet connection corresponding to your default connection profile. Details: Chapter 4.2.3 Internet Options
	Disconnect from the Internet	Click to disconnect an active connection. Details: Chapter 4.2.3 Internet Options
X	Close Flying Angel Connection Manager Dashboard	Click to close Flying Angel Connection Manager. If connected to the Internet, you will also disconnect an active connection.
-	Minimize Flying Angel Connection Manager Dashboard	Click to minimize the Flying Angel Connection Manager Main Window. The application remains active in the background.
?	Help	Click to open the Flying Angel Connection Manager Help window.
	Launch Flying Angel Explorer	Click to launch Flying Angel Explorer, which allows you to retrieve and manage your messages, contacts and calls. Details: Chapter 4.2.4 Flying Angel Explorer
	Launch E-mail	Click to launch your default Internet connection and open your default e-mail client to retrieve and send e-mail. Details: Chapter 4.2.3 Internet Options



	Launch Browser	Click to launch your default Internet connection and open your default Internet browser to surf the web. Details: Chapter 4.2.5 Internet Options
	Tools Menu	Click to open the preferences and tools menu (see figure 4-12), and set your connections profile. You can select from the Settings Menu Options detailed in Table 4-13.



Fig. 4.2-5

Flying Angel Connection Manager Tools Menu

Click [Settings] to choose from the Settings Menu options outlined in table 4.2-6.

Table 4.2-6 Flying Angel Connection Manager: Settings Menu Options	
Flying Angel Explorer	Click to open a list of telecommunication devices that have been connected to your PC and recognized by Flying Angel Connection Manager. Click on a device name to launch a Flying Angel Explorer window for that telecommunication device. The device name shown in boldface is the one that is currently connected to your computer. Details: Chapter 4.2.4 Flying Angel Explorer
Connections Dial-up	Click to set up or change connection parameters to access a connection with your wireless service provider.
Operator	Click to set up and view a list of wireless service providers you can select from to connect to the Internet.
Network Type	Click to select from a list of network types to use to connect to the Internet.

Connection History	Click to view a detailed history of all the connections made on UMTS, EDGS, GPRS and GSM wireless networks from Flying Angel Connection Manager.
Check for Updates	Click to check for Flying Angel Connection Manager software updates.
Restart in diagnostic mode	This option enables you to send us trace files of Flying Angel Connection Manager in the case of malfunction.
Settings	Click to define preferences including language and startup options. Details: Chapter 4.2.5 Settings
Help	Click to open the Flying Angel Connection Manager Help window.
About	Click to view software version information for Flying Angel Connection Manager on your PC.

4.2.2 Set Up Your Connection Profile

The first time you use the Flying Angel 3G Wireless Data Card, you will need to create a Connection Profile to define the connection information that enables the modem to access your wireless network and connect to the Internet.


This connection requires an active account with a wireless service provider.

Required Connection Information

When you set up your Connection Profile, you will need network access information from your wireless provider, which may include some or all of the following:

- **Access Point Name (APN):** identifies your wireless provider's network
- **Authentication Parameters:** Your provider may require you to authenticate your account when you access their wireless network. This information may include user name, password and domain.
- **DNS Server Information**
- **Other Settings Information** including HTTP Proxy Address (for Microsoft Internet Explorer only), Service Quality parameters (QoS), R99 QoS, Security, or Advanced Settings parameters

Creating a New Connection Profile

1. Click the Settings icon  in the Flying Angel Connection Manager

Dashboard to open the Settings Menu.

You may also open the Settings Menu from the **Flying Angel Explorer** window, the **Messages** window and the **Contacts** window by clicking **[Tools]** in the top menu bar, then clicking **[Settings]**.

2. Select **[Connections (Dial-up)]**, which opens the window shown in figure 4.2-7.

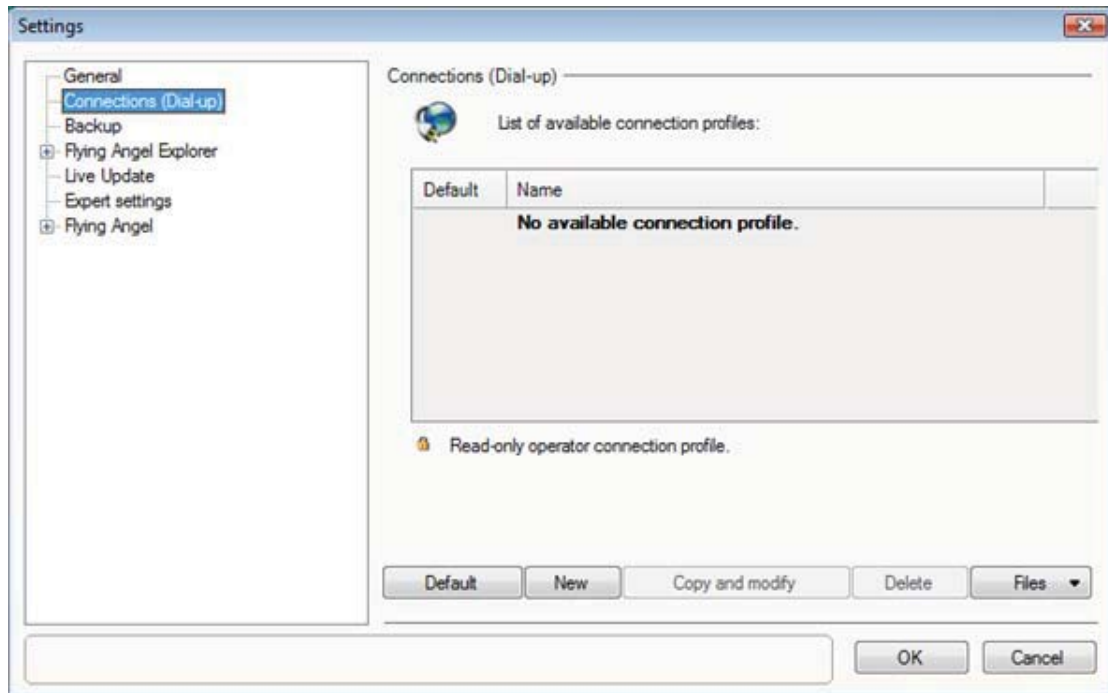


Fig. 4.2-7

3. Select **[Create New Connection – HSPDA/UMTS/EDGE/GPRS (fast)]** (figure 4.2-8).

This is the preferred method for creating your initial connection profile, which enables you to enter the most current and updated connection parameters as provided by your wireless provider. Other options for creating connection profiles are described in Step 7, below.

Click **[Next]** to open the **Connection Parameters** window.

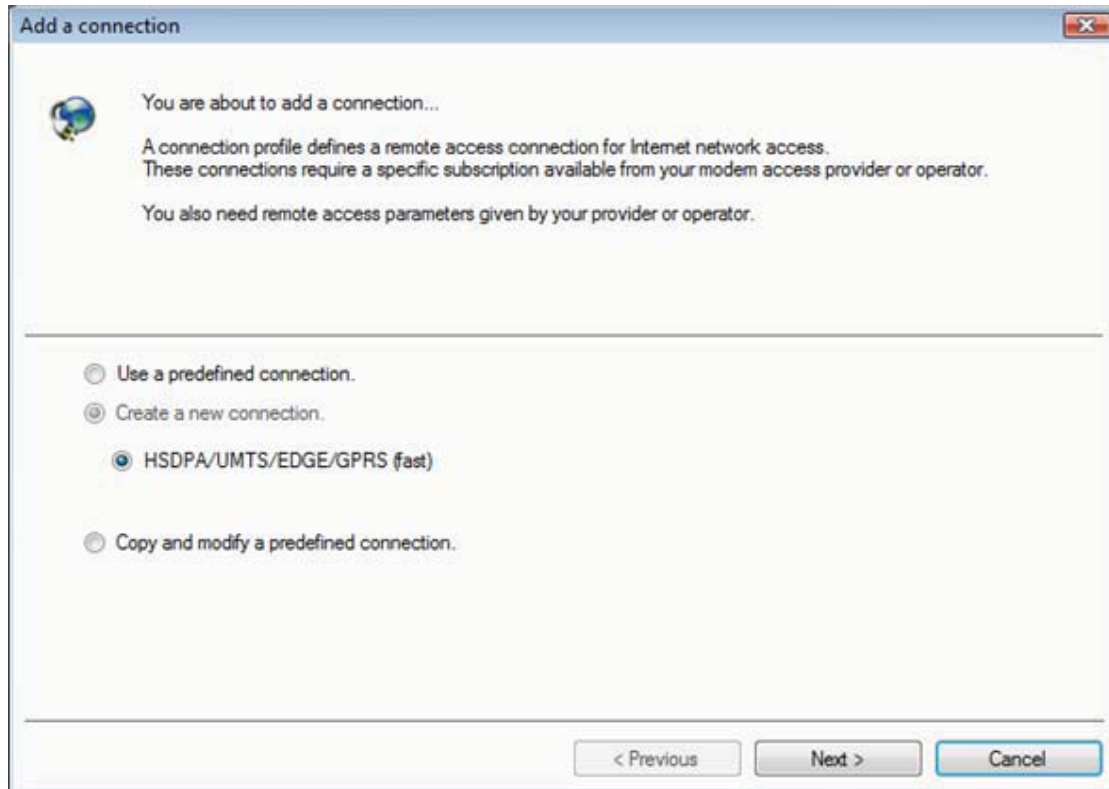


Fig. 4.2-8

4. Enter the connection parameters:

- Enter a name for your Connection Profile. (See figure 4.2-9.)
- Enter the Access Point Name (APN) (See figure 4.2-10 – *refer to your wireless provider.*)
- Enter the Authentication information if necessary (*refer to your wireless provider*)

HSDPA/UMTS/EDGE/GPRS connection parameters

HSDPA/UMTS/EDGE/GPRS DNS/Proxy QoS R99 QoS

Definition of the connection

Choose a name for this connection:

Centennial Wireless

Access point name (APN)

The access point name or APN is indicated by your operator or your HSDPA/UMTS/EDGE/GPRS access provider.

Authenticating

User Name:

Password:

Domain:

< Previous Finish Cancel

Fig. 4.2-9

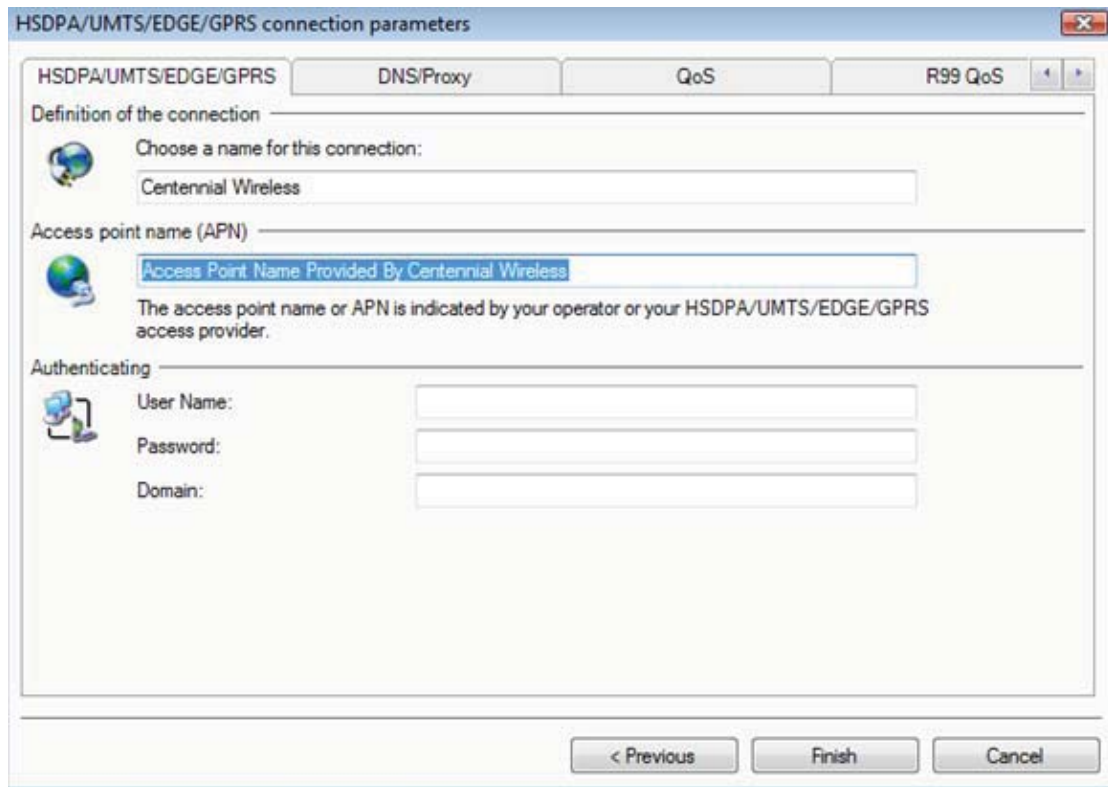


Fig. 4.2-10

5. If your wireless provider requires it, click on the relevant tab in the connection parameters window to enter additional connection information. (See figure 4.2-11.)

This information may include DNS/Proxy Information, QoS, R99 QoS, Security, or Advanced Settings. Refer to your wireless provider for more information.

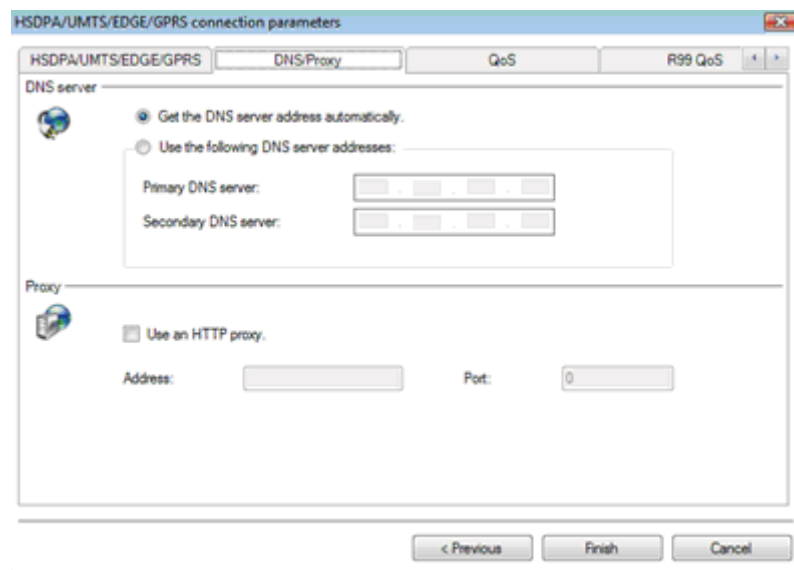


Fig. 4.2-11

6. Click **[Finish]**. The **Connections (Dial-up)** window will open with the name of the new connections profile you just created in the **List of available connections** (see figure 4.2-12).

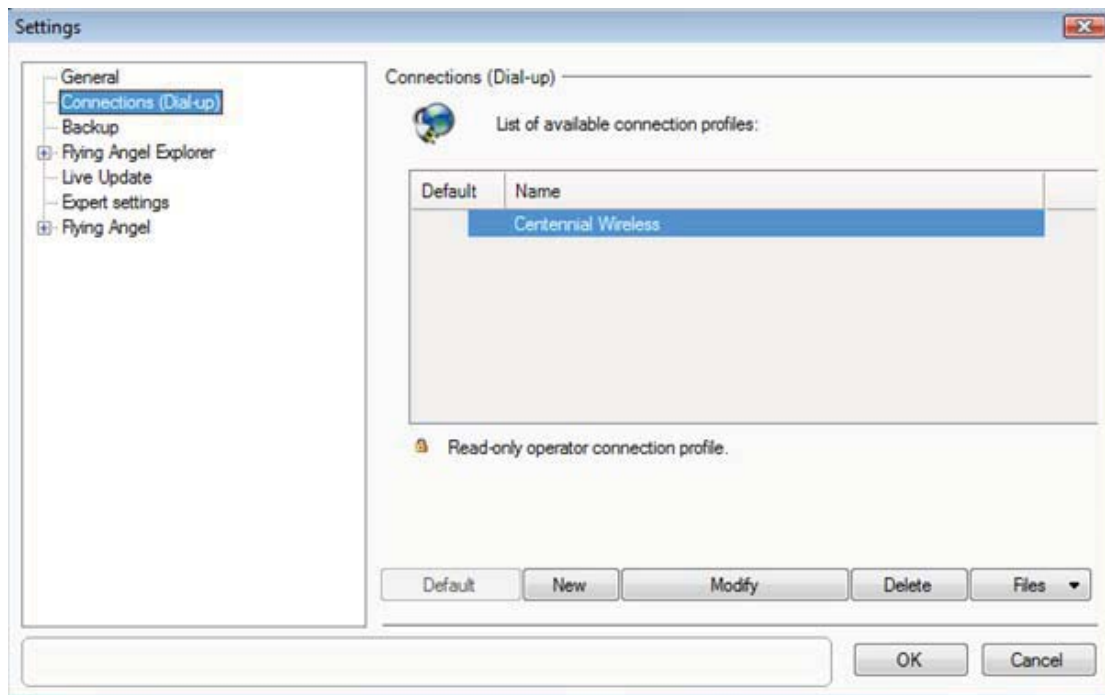


Fig. 4.2-12

7. You may repeat the above Steps 1 through 6 to add as many Connection Profiles as you need. You will require a separate, active account from a wireless service provider for each connection profile you create.

Note: The preferred method to add a connection (see figure 4.2-8) is to click **[Create New Connection – HSPDA/UMTS/EDGE/GPRS (fast)]**. The “Add a connection” window also includes the following secondary connection options:

- **Use a predefined connection.** Includes a limited list of wireless providers and their connection parameters, preloaded into the Connection Manager software. (See figure Fig. 4.2-13)

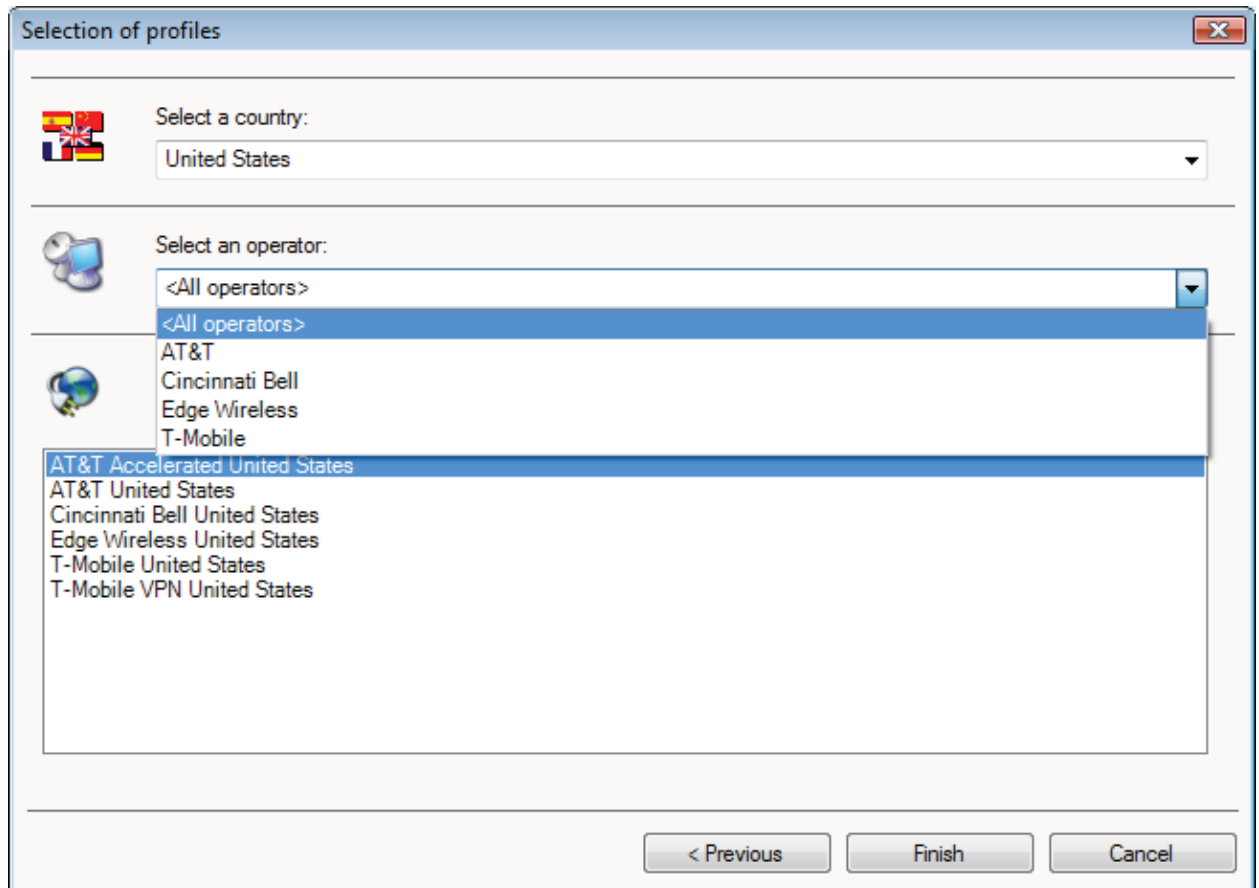



Fig. 4.2-13

- **Copy and modify a predefined connection.** If your carrier is included in the limited list of wireless providers that is preloaded into the Connection Manager software, you may update and modify the parameters of that predefined connection and save it under a new name.

Setting Your Default Connection Profile

To set a connection profile as your default, click xxxxxxxxxxxxxxxx. Xxxxxxxxxxxxxx

xxxxxxxxxx. Xxxxxxxxxxx. Default connections are marked with a padlock  in the Default column of the **Connections (Dial-up)** window (figure 4.2-12), which indicates that these connections cannot be modified or deleted.

Once you set a connection profile as your default, the Flying Angel will automatically use that connection to access your wireless provider's network.

For more information on exporting, importing and modifying connections, see **Chapter 4.2.5, Settings**.

4.2.3 Internet Options

Establishing an Internet Connection

Flying Angel Connection Manager makes it simple to connect to the Internet using the Flying Angel 3G Wireless Data Card, after you set up your default wireless connection profile (see Chapter 4.2.2, above):



- Click on the **“Connect”** button in the **Flying Angel Connection Manager Dashboard** to launch an Internet connection. (See figure 4.2-3.)
- A dialog box titled with the name of your connection profile will appear, showing you the status of your connection process. You can cancel the connection process by clicking **“Cancel”** or by directly closing this dialogue box.

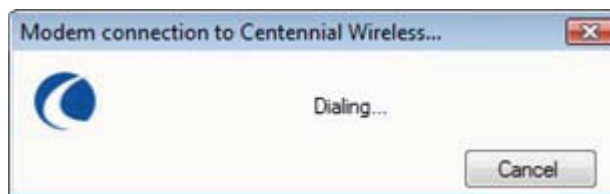


Fig. 4.2-14

- Once you are connected, a Statistics window appears, containing information on time and data status for the connection and a Statistics button that you can click to view more statistics. You can close this window without disconnecting from the Internet.

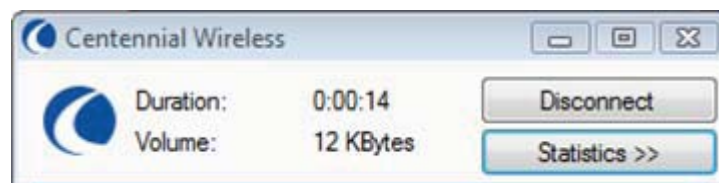


Fig. 4.2-15




- Click on the **“Disconnect”** button in the **Flying Angel Connection Manager Dashboard** to disconnect an Internet connection. (Figure 4.2-3.)
- The Statistics window also includes a **Disconnect** button (Fig.

	4.2-15), which allows you to disconnect from the Internet with a click.
--	---


Launching Your Internet Browser

To launch the default Internet browser on your PC from Flying Angel Connection Manager:

	<ul style="list-style-type: none">• Click on the “Launch Browser” button in the Flying Angel Connection Manager Dashboard. (Figure 4.2-3.)• Your wireless connection is automatically made in the same way as in the "Establishing an Internet Connection" section above.• The default browser installed on your PC is launched when the connection is established.
---	---


Launching Your E-Mail Client

To launch the default e-mail client on your PC from Flying Angel Connection Manager:

	<ul style="list-style-type: none">• Click on the “Launch E-mail” button in the Flying Angel Connection Manager Dashboard. (Figure 4.2-3.)• Your wireless connection is automatically made in the same way as in the "Establishing an Internet Connection" section above.• The default e-mail client installed on your PC is launched when the connection is established.
---	--


Closing the Connection

You can end your Internet connection in different ways:

	<ul style="list-style-type: none">• Click on the “Disconnect” button in the Flying Angel Connection Manager Dashboard. (Figure 4.2-3.)
	OR <ul style="list-style-type: none">• Click on the “Disconnect” button in the statistics window that appears once you have established an Internet connection.

If your browser and e-mail client are open when you disconnect, you will need to exit those applications manually.

Displaying the Connections Log

	<ul style="list-style-type: none">• Click on the Settings Menu icon in the Flying Angel Connection Manager Dashboard, then click on “Connection History”. (Figure 4.2-3.)
	<ul style="list-style-type: none">• The Connection History window displays all UMTS, EDGE, GPRS and GSM connections made from Flying Angel Connection Manager along with the associated statistics, such as the duration of the connection and the incoming and outgoing volumes

4.2.4 Flying Angel Explorer

Flying Angel Explorer enables you to manage the data associated with your Flying Angel 3G Wireless Data Card, including SMS messages and contacts.

You can launch Flying Angel Explorer (figure 4.2-16) as follows:

	<ul style="list-style-type: none">From the Flying Angel Connection Manager Dashboard (figure 4.2-3): Click the “Flying Angel Explorer” button
	<p>OR</p> <ul style="list-style-type: none">From the Startup Menu: Click the radio button for “Explore the device (contacts, SMS, ...)”

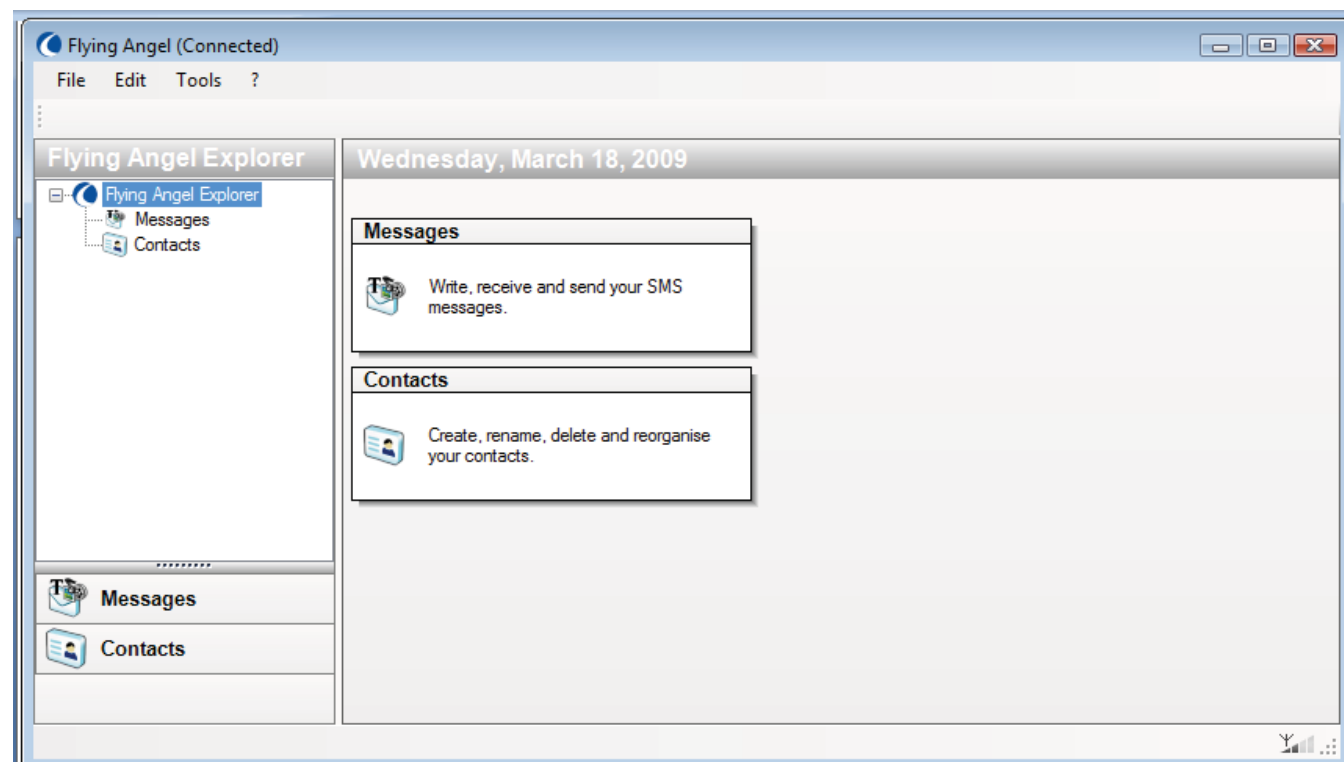


Fig. 4.2-16
Flying Angel Explorer

The following functions can be managed using the Flying Angel Explorer:

Messages: you can send and receive SMS text messages in Flying Angel Explorer, and manage any SMS text messages saved to the SIM card in your Flying Angel 3G Wireless

Data Card.

- Click on **[Messages]** in the **Flying Angel Explorer window** to manage SMS text messages. Additional details follow in the [Messages](#) section of this chapter.

Contacts: you can manage contacts saved to the SIM card in your Flying Angel 3G Wireless Data Card, as well as the contacts from your mail client.

- Click on **[Contacts]** in the **Flying Angel Explorer window** to manage contacts. Additional details follow in the [Contacts](#) section of this chapter.

Messages

When you click on **Messages** in Flying Angel Explorer, the following window appears (figure 4.2-17):

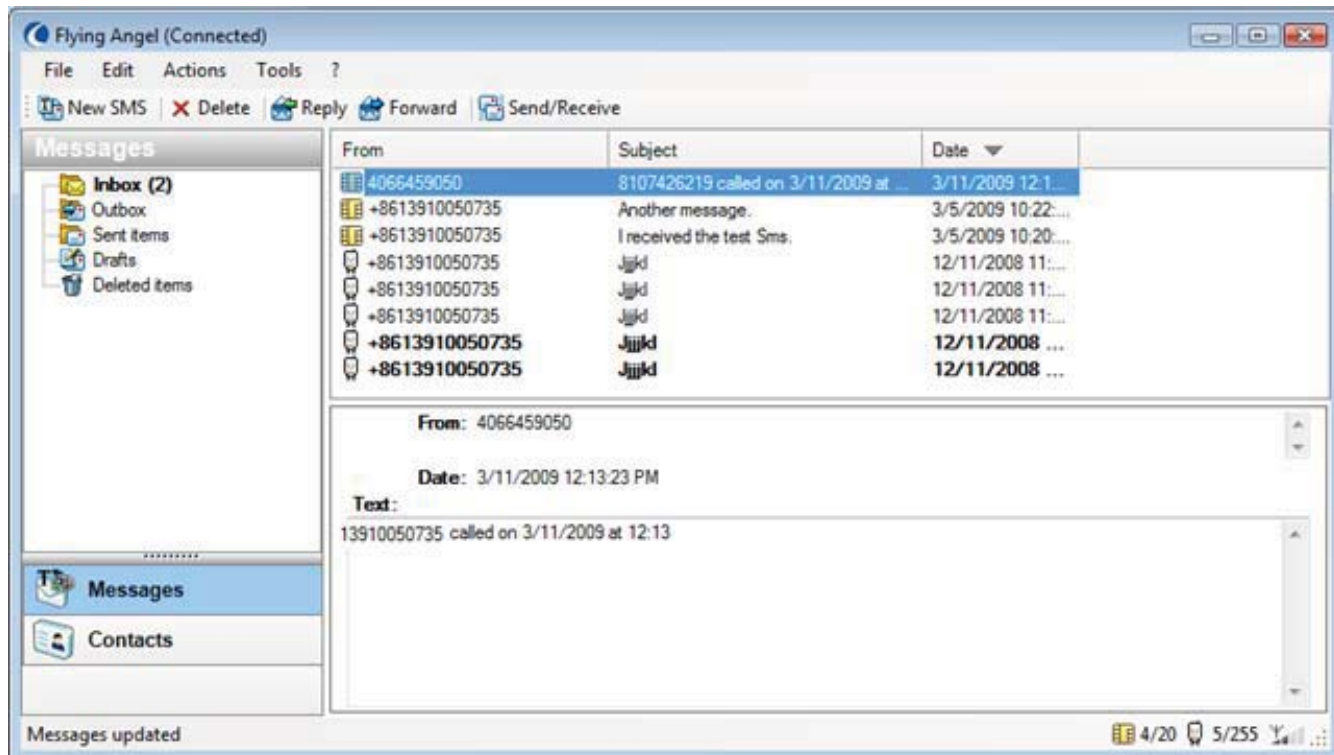










Fig. 4.2-17

Messages Window – Flying Angel Explorer

The buttons, icons, and commands available in the Messages window are outlined below in table 4.2-18.

Table 4.2-18 Flying Angel Connection Manager Messages: Icons and Buttons	
Message Status Icons	
	SMS text message saved to and retrieved from the SIM card in the Flying Angel 3G Wireless Data Card.

	SMS text message saved to the microSD memory card in the device. (Optional – applies only if a microSD card has been installed in the Flying Angel.)	
	SMS text message saved to the PC.	
Toolbar Command Buttons		
	New SMS	Click to open the SMS editor in order to compose and send an SMS text message to one or more recipients. (See figure 4.2-19.)
	Delete Selected SMS	Click to delete the selected SMS message from Flying Angel Connection Manager Messages.
	Send/Receive SMS	Click to retrieve incoming messages and send all messages stored in the Outbox.
	Forward Selected SMS	Click to open the SMS editor in order to edit your selected SMS text message, insert one or more new recipient numbers, and forward the message to the new recipients.
	Reply to Selected SMS	Click to open the SMS editor in order to edit your selected SMS text message and send your reply to the recipient's number.
Icon?	Command? Update? Sync?	Click to sync mailbox data between SIM card, PC, and optional microSD card (when installed to the device).

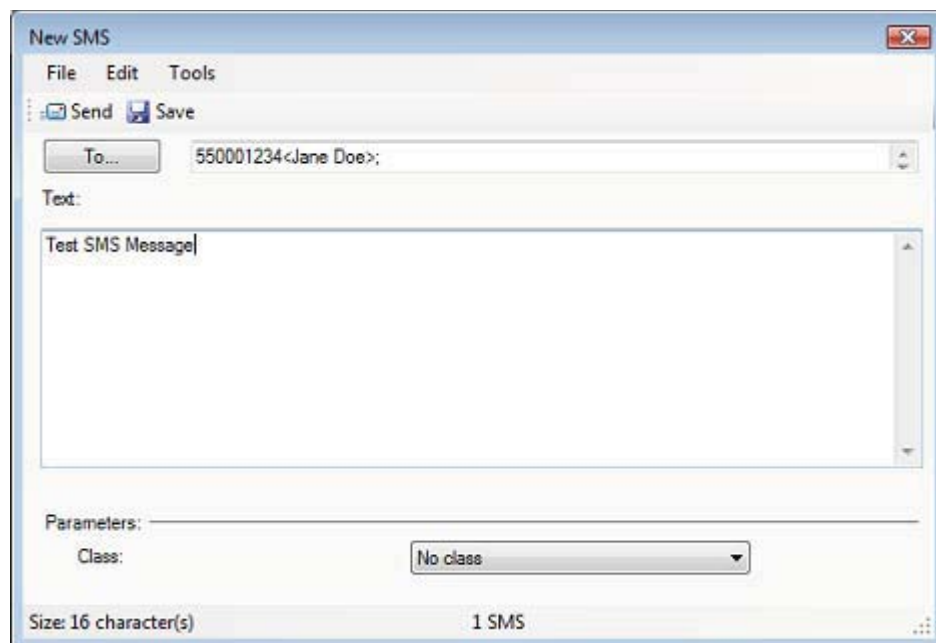


Fig. 4.2-19

Compose New SMS Text Message with the Flying Angel Explorer SMS Editor

Importing Messages into Flying Angel Connection Manager

You can import existing SMS text message files – usually in «.xxxxx» or «.xxxx» file format from another location on your computer into Flying Angel Connection Manager as follows:

- Click the **[Files]** button
- Select **[Import...]**

- Locate and select your file
- Click [**Open**]: the selected message file is shown on the screen
- Click [**OK**] to import the file

Exporting Contacts from Flying Angel Connection Manager

You can export your Flying Angel Connection Manager SMS files in a «.xxxxx» or «.xxxx» file format compatible with other wireless devices to a designated location on your computer as follows:

- Select the contacts you want to export into a file
- Click the [**Files**] button
- Select [**Export...**]
- Indicate a destination path and click [xxxxx]. A message file in «xxxx» format will be created. You can then import this file into SMS mail clients on other devices.

For more information on modifying message settings, see **Chapter 4.2.5 Settings**.

Contacts

When you click on **Contacts** in Flying Angel Explorer, the following window appears (figure 4.2-20):

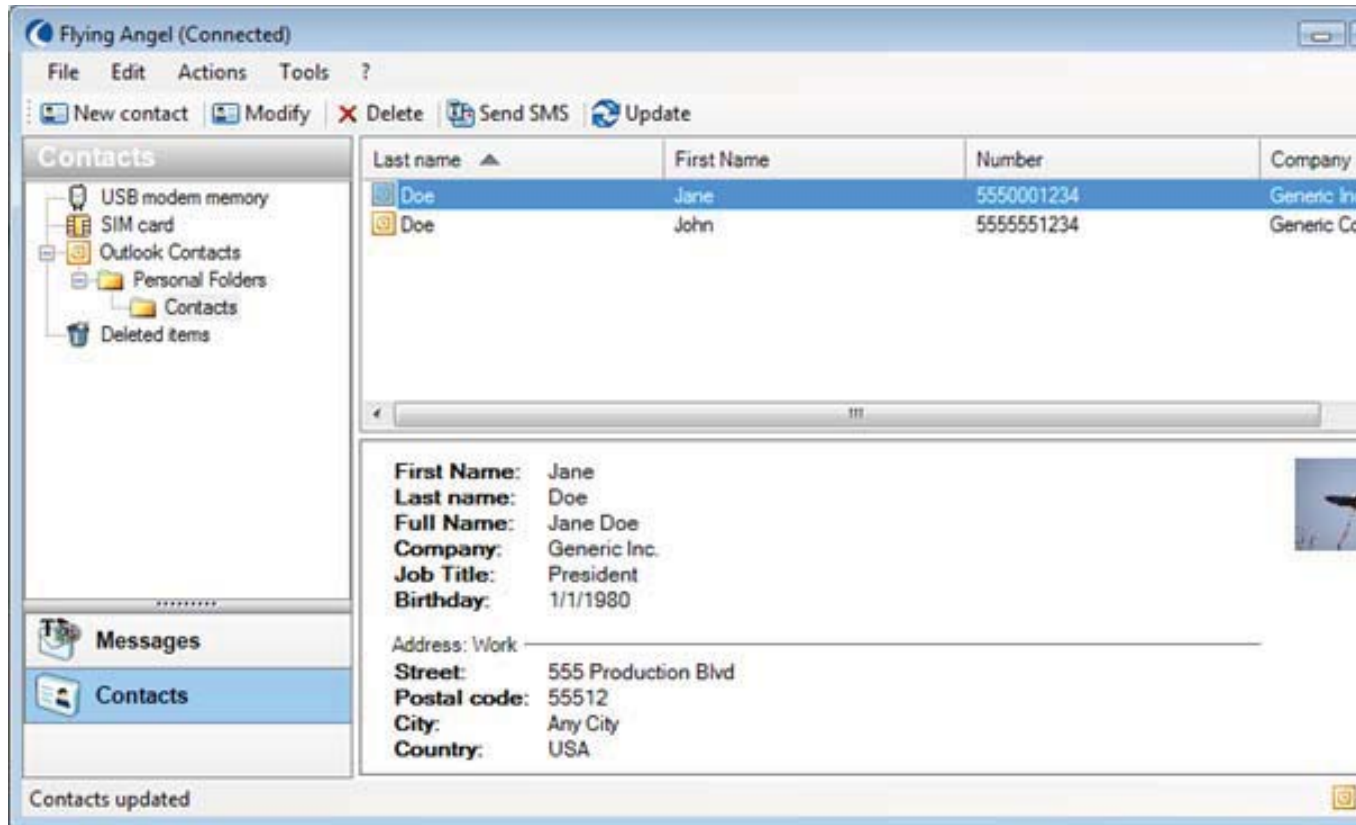









Fig. 4.2-20

Contacts Window – Flying Angel Explorer

The buttons, icons, and commands available in the Contacts window are outlined below in table 4.2-21.

Table 4.2-21 Flying Angel Connection Manager Contacts: Icons and Buttons		
Contact Status Icons		
		Contact saved to and retrieved from the SIM card in the Flying Angel 3G Wireless Data Card.
		Contact saved to the microSD memory card in the Flying Angel 3G Wireless Data Card.
		Can you save contact to the PC?
Toolbar Command Buttons		
	New Contact	Click to open the contact editor and add a new contact to Flying Angel Connection Manager Contacts. Note: the contact list from the SIM card will contain only a name and a telephone number. contact editor is reduced if the list displayed is the list of contacts from the SIM card. A contact from the SIM card only contains a name and a telephone number;
	Modify Contact	Click to open the contact editor and modify contact information in Flying Angel Connection Manager Contacts.
	Delete	Click to delete selected contact from Flying Angel Connection Manager Contacts.
	New SMS	Click to open the SMS editor in order to compose and send an SMS text message to one or more contacts. The number(s) of the selected contact(s) will be automatically displayed in the "To" field of the message.
	Update	Click to launch synchronization of contacts between the SIM card and the PC.

Importing Contacts into Flying Angel Connection Manager

You can import existing Outlook contact files – usually in «.backup» or «.wph» file format from another location on your computer into Flying Angel Connection Manager as follows:

- Click the **[Files]** button
- Select **[Import...]**
- Locate and select your file
- Click **[Open]**: the selected contact file is shown on the screen
- Click **[OK]** to import the file

Exporting Contacts from Flying Angel Connection Manager


You can export your Flying Angel Connection Manager contact files in a «.backup» or «.wph» file format file format compatible with Outlook to a designated location on your computer as follows:

- Select the contacts you want to export into a file
- Click the **[Files]** button
- Select **[Export...]**
- Indicate a destination path and click **[xxxxx]**. A contact file in «xxxx» format will be created. You can then import this file into Outlook.

For more information on modifying contact settings, see **Chapter 4.2.5, Settings**.

4.2.5 Manage Your Settings

To manage your Flying Angel Connection Manager preferences or change setting parameters:

	<ul style="list-style-type: none"> • From the Flying Angel Connection Manager Dashboard: Click on the Settings Menu icon, then select “Settings”.
	<ul style="list-style-type: none"> • From Flying Angel Explorer: <ul style="list-style-type: none"> - Click [Tools] in the top menu bar - Click [Settings]
	<ul style="list-style-type: none"> • From Messages: <ul style="list-style-type: none"> - Click [Tools] in the top menu bar - Click [Settings]
	<ul style="list-style-type: none"> • From Contacts: <ul style="list-style-type: none"> - Click [Tools] in the top menu bar - Click [Settings]

Modify General Settings

The General Settings you can modify are the following:

Insert Screenshot for main Modify General Settings screen

- **Automatically run application when I log on to Windows**
This option is checked by default and launches Flying Angel Connection Manager whenever your computer is started up. If the option is un-checked, you will need to launch the Flying Angel Connection Manager application manually from your PC's Program Menu.
- **Select language**
The default language for Flying Angel Connection Manager is selected when you install the software to your PC. This option allows you to change the default language, which becomes effective after you close and re-launch the application.
- **Action to perform when device is connected**
These radio buttons enable you to launch a specific action whenever the Flying Angel

3G Wireless Data Card is connected to your PC and detected by Flying Angel Connection Manager:


- **Do nothing:** the Flying Angel Connection Manager Dashboard will open and allow you to choose your preferred action;
- **Explore the device (contacts, SMS, files, ...):** launches the Flying Angel Explorer windows allowing you to manage messages and contacts;
- **Connect to the Internet:** launches the default wireless connection;
- **Always ask:** launches the **Flying Angel Connection Manager startup menu** (see Section 3.2, fig. 3-11 above), giving a list of actions to choose from. This option is the default option.

Modify Connections (Dial-up) Settings

After you have set up your connections profile (Section 4.2.2), you may modify the settings in the **Connections (Dial-up) settings window**, which displays a list of connections defined in Flying Angel Connection Manager.

Insert Screenshot for main Modify/Delete Connections screen

Deleting or Modifying a connection

- Select a connection and click the **[Delete]** button to delete any existing connection that is not designated as a Default connection or is in the list of predefined connections (see figure 4.2-13). Click **[OK]** to confirm.
- Select a connection and click the **[Modify]** button to change the parameters of any existing connection that is not designated as a Default connection. The Connection Parameters window will open and allow you to modify the parameters. Click **[OK]** to confirm these modifications. (See Section 4.2.2.)
- You may not delete or modify a Default connection, indicated by a padlock icon  in the Default column of the **Connections (Dial-up)** window. (See Section 4.2.2 for more information about Default connections.)

When you select a default connection, the **Delete** button is deactivated and the **Modify** button is replaced by **Copy and modify**. The **[Copy and modify]** button enables you to create a copy of the selected connection and to modify the parameters.

Exporting a connection

The Export function allows you to save your Connection Profiles as Flying Angel Connection Manager files in «xml» file format to locations on your PC.

You can export an existing connection into a file with an extension «.xml» format as follows:

- Select the connection you want to export into a file
- Click the **[Files]** button
- Select **[Export...]**
- Indicate a destination path and click **[xxxxx]**. A connection profile in the form of a file in «xml» format will be created. You can then import this file into other computers in order to automatically recreate the connection profile.

Importing a connection

The Import function allows you to import other connection profiles previously exported and saved in «xml» file format.

You can import an existing connection with an «.xml» format from another location on your computer into Flying Angel Connection Manager as follows:

- Click the **[Files]** button
- Select **[Import...]**
- Locate and select your file
- Click **[Open]**: the selected connection is shown on the screen in the list of connections
- Click the **[Default]** button if you want to define it as the default connection.

Modify Contacts and Messages Settings in Flying Angel

Explorer

Configuring the Contacts Options

You may select how Flying Angel Connection Manager synchronizes the contacts stored on the Flying Angel with contacts stored in another location on your computer. (See figure 4.2-22.)

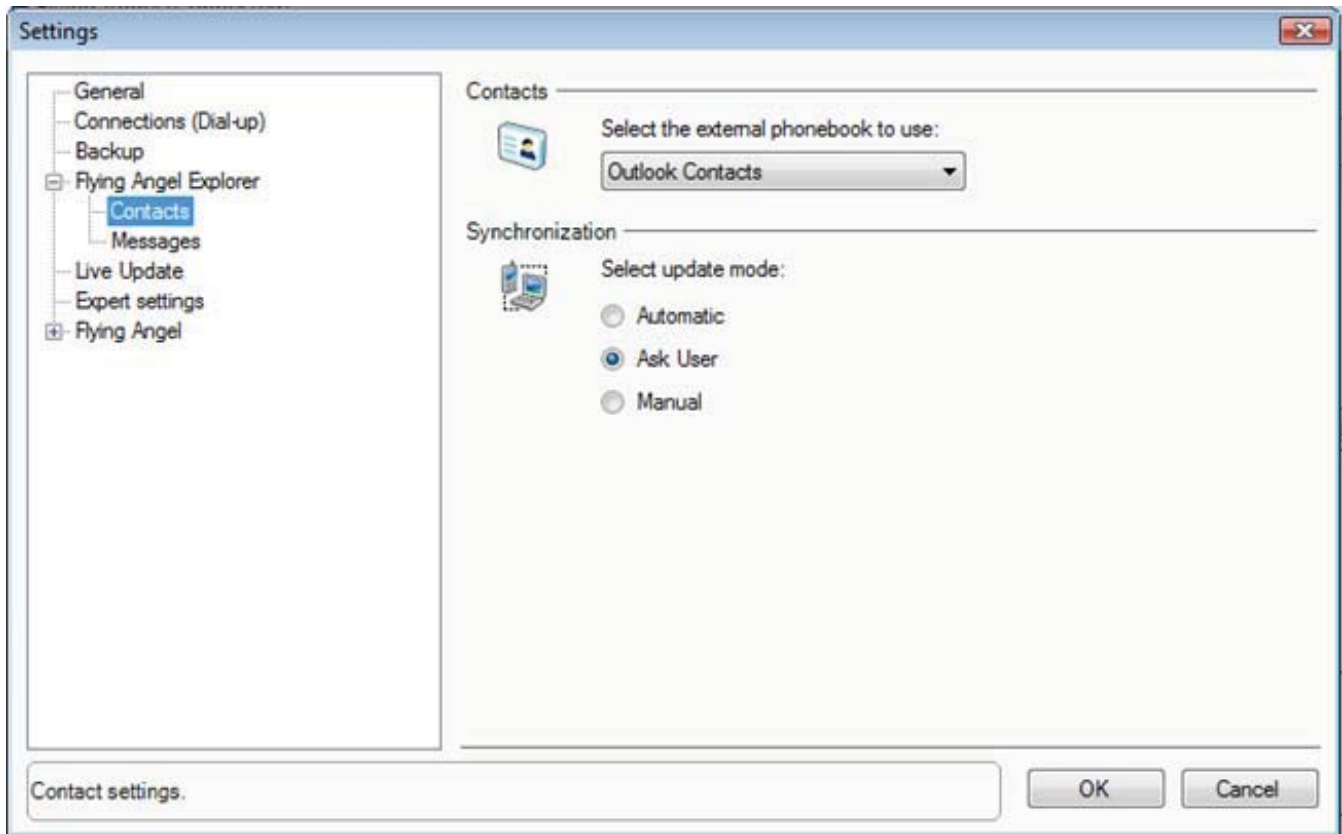
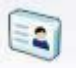




Fig. 4.2-22

- Select the external phonebook location of the Contacts on your PC that you would like to sync with the SIM card on the Flying Angel: **None, Outlook Contacts, Windows Address Book.**

Click [**OK**] to confirm your choice.

- Select the contact **Synchronization** mode, by selecting one of the following radio buttons:

Automatic	Flying Angel Connection Manager will automatically sync your contacts on the Flying Angel with the phonebook of your choice when you click the Send/Receive SMS button  button
Ask User	PC Sync will ask you if you wish to sync your contacts on the Flying Angel with the phonebook of your choice when you click the Send/Receive SMS button  .
Manual	Flying Angel Connection Manager will sync your contacts on the Flying Angel with the phonebook of your choice

	<p>only when you complete one of the following actions:</p> <ul style="list-style-type: none"> - Click the Update button  - From the Actions Menu, click, [Update]
--	--

Click **[OK]** to confirm your choice.

Configuring the Message Options

You may select how Flying Angel Connection Manager delivers SMS text messages sent with the Flying Angel.

Screenshot?

- Check the **[Request a delivery report]** box if you want to receive an acknowledgement of receipt for each SMS message sent. By default, this box is not checked.
- Select the **SMS delivery class** that will be used for each SMS message sent.

[0] Screen	The SMS sent will only be received on the screen of the recipient's telecommunication device.
[1] Phone Memory	The SMS sent will be stored in the memory of the recipient's telecommunication device
[2] SIM card	The SMS sent will be stored in the SIM card of the recipient's telecommunication device
[3] Default	The SMS sent will be stored in the memory designated by default on the recipient's telecommunication device. This memory can be either the SIM card or other storage on the telecommunication device.
[4] No class	The SMS sent will have no specified class. This is the default option.

Click **[OK]** to confirm your choice.

Live update

NOTE: *What are these updates for? PC Sync software, or are you just checking for new messages?*

Automatically check for new updates: you can set the interval of each update as 1-100 hours. After setting, automatic updates will be execute according to the timer you set.

Expert settings

Expert settings allows you to automatically retrieve network information for the Flying Angel from your wireless network. (See figure Fig. 4.2-23.) You may choose an interval ranging from every 15 seconds to every 60 minutes.. Click **[OK]** to confirm your updates.

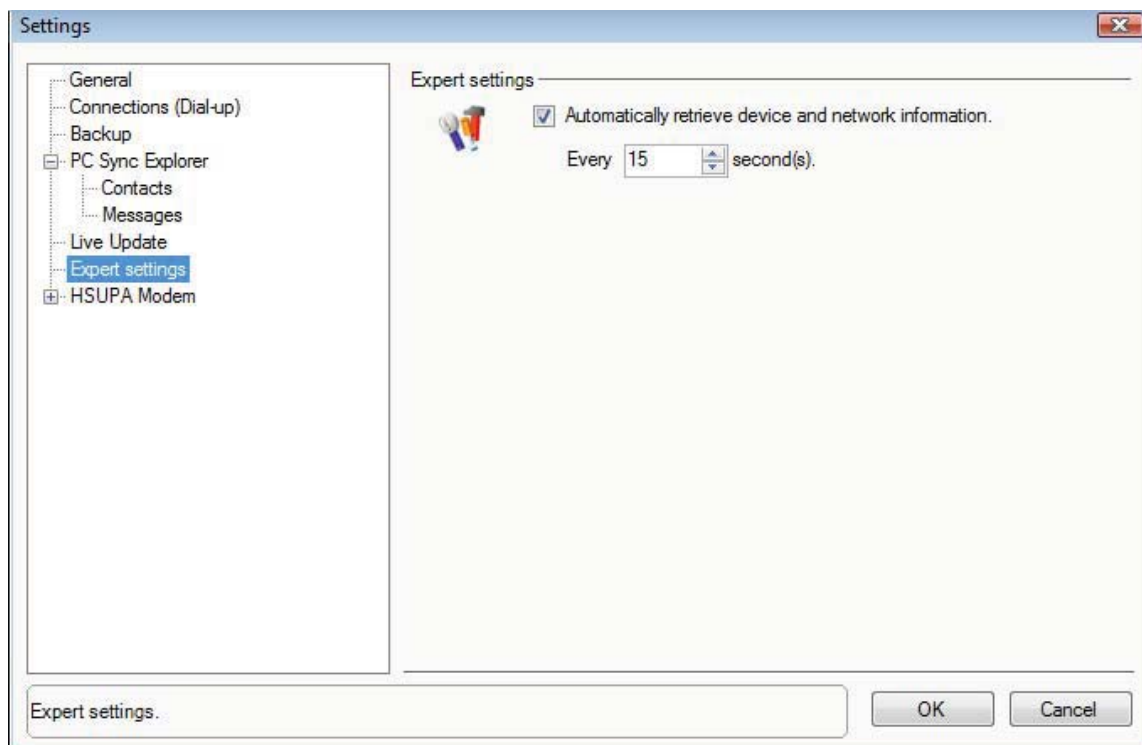


Fig. 4.2-23

Modifying Device Settings

Flying Angel Connection Manager allows you to modify the following device settings for the Flying Angel 3G Wireless Data Card:

Name displayed

You may customize the way the name of your device appears in Flying Angel Connection Manager as shown below in figure Fig. 4.2-24:

- Click on **[HSUPA Modem]**, which is the factory-default name given to the device.
- In the **Name Displayed** field, enter your preferred device name.
- Click **[OK]** to confirm your update, and your new device name will appear in the Settings menu.

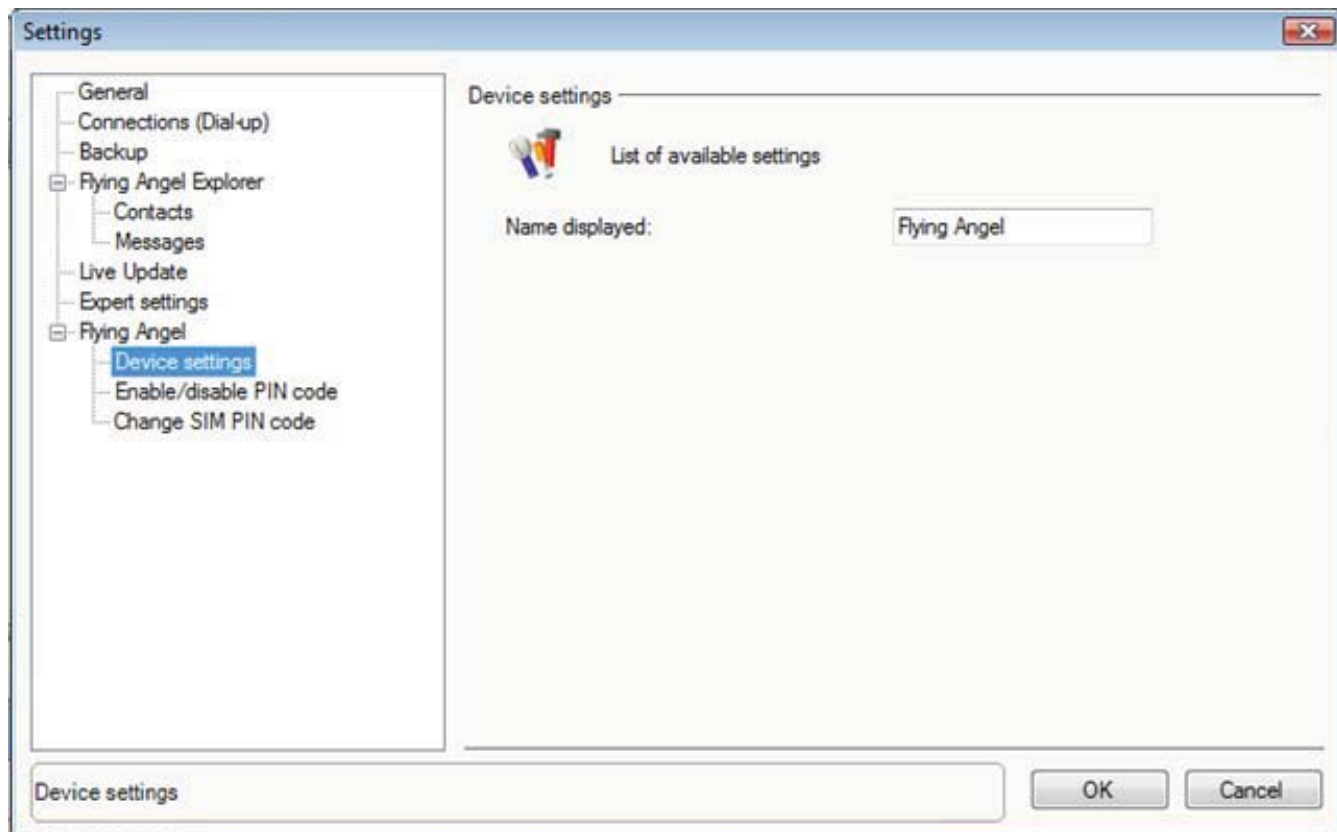


Fig. 4.2-24

Change SIM Card settings

Flying Angel Connection Manager also enables you to change settings for your SIM card using Flying Angel Connection Manager:

- **Enable/disable PIN code**

Note: Need more info to edit this. Do the SIM cards have an original PIN code that you need to do this, or are you setting up one for the first time?

You can set SIM PIN code status as Disable or Enable, and when you change settings, you must input correct PIN code first. If you set SIM PIN code as Enable, every time Flying Angel is detected, you will be asked for inputting SIM PIN code first.

Note: you have only three attempts to input PIN code, after three wrong attempts, your SIM will be blocked. It can only be unblocked with the PUK code. You will be asked for this the next time Flying Angel is detected. If the PUK code is known, the PIN code will be reset to "0000".

- **Change SIM PIN code**

Note: Need more info to edit this. Is this changing a PIN code that originally came with the card, or are you changing the one you just set up in the section above?

To change SIM PIN code, the following steps shown as:

- Previous SIM PIN code: old PIN code of the SIM card;
- New SIM PIN code: new PIN code of the SIM card;
- Confirm new SIM PIN code: confirmation of the new PIN code of the SIM card.

Note: you have only three attempts to change SIM PIN code, after three tries, your SIM card will be blocked. It can only be unblocked with the PUK code. You will be asked for this the next time Flying Angel is detected. If the PUK code is known, the PIN code will be reset to "0000".

Chapter 5 Installation and Software – Macintosh

5.1 Install Connection Software

The Flying Angel 3G Wireless Data Card comes with the following software which will allow you to connect to the internet, establish modem settings, and manage your data:

- Flying Angel Connection Manager software for Macintosh
- Driver software to interface between the Flying Angel 3G Wireless Data Card and your computer's operating system.

The first time the Flying Angel 3G Wireless Data Card is inserted in a USB slot in your computer, you will be guided through the following steps to automatically install the Connection Manager software and drivers.

1. **Connect the Flying Angel 3G Wireless Data Card to Your PC** (See Chapter 3.)
2. The Flying Angel Connection Manager Welcome screen will appear (see figure 5.1-1). **Select [Continue] to continue with the installation.**

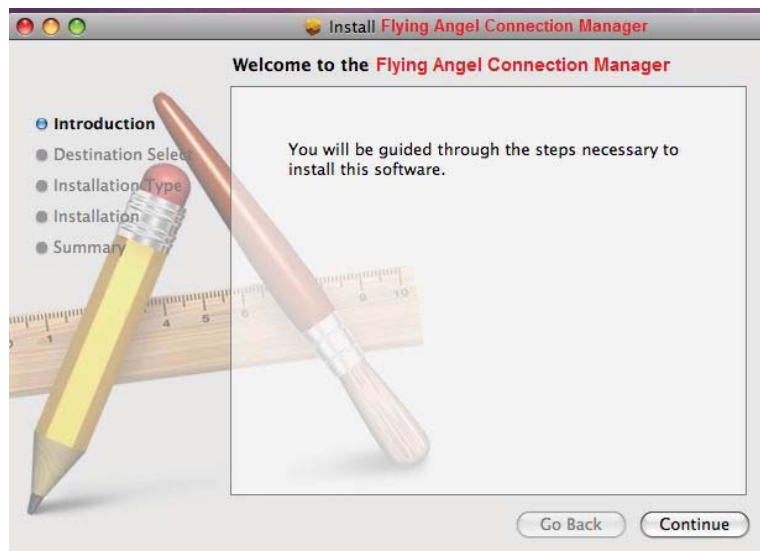


Fig. 5.1-1

3. The installation guide will automatically designate "Macintosh HD" as the location for the Standard Installation. **To install to the suggested folder, click [Install].** (Figure 5.1-2)

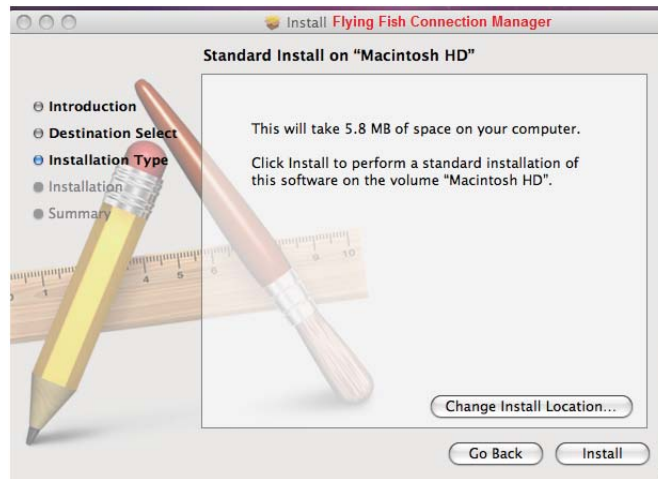


Fig. 5.1-2

If you want to set up a different location for the installation files, select **[Change Install Location...]** and select an alternative destination (figure 5.1-3). Select Continue to return to the Installation Screen. Select **[Install]** to start the installation.

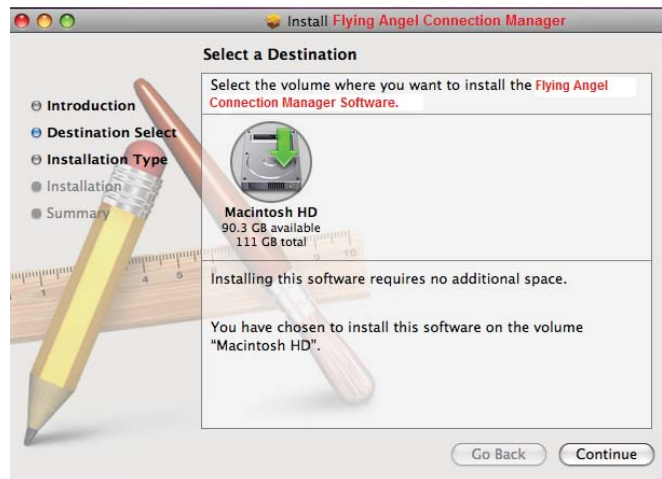


Fig. 5.1-3

4. Enter the Username and Password and click **[OK]** to continue with the installation.
(Figure 5.1-4.)



5.1-4

4. The installation will take several minutes. When the software has been successfully installed and the “Install Succeeded” screen appears (5.1-5), click [Close].

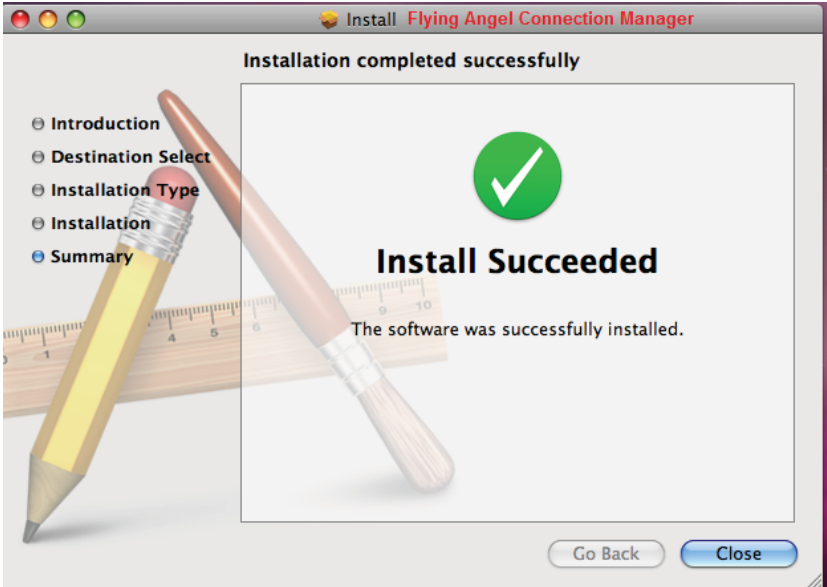


Fig. 5.1-5

5.2 Using the Flying Angel 3G Wireless Data Card - Mac




Make sure the Flying Angel 3G Wireless Data Card is connected to a USB port on your Mac, and the modem software and drivers are installed as outlined previously in Section 5.1.

When the Flying Angel is properly connected, your computer detects the modem and opens Connection Manager.

5.2.1 Connection Manager Tools

Connection Manager features a toolbar (see figure 5.2-2) that allows you to manage the following functions:

Table 5.2-1 Connection Manager: Icons and Buttons		
Globe Icon	Internet	Click to set up and manage your Internet connection parameters. For more detail, see Section 5.2.3

	SMS	Click to send and manage SMS text messages. For more detail, see Section 5.2.4.
	PhoneBook	Click to manage phone numbers and contacts. For more detail, see Section 5.2.5.
	Settings	Click to establish and update your settings preferences. For more detail, see Section 5.2.6.
Icon	Info	Click for Help.

5.2.2 Set Up Your Connection Profile

The first time you use the Flying Angel 3G Wireless Data Card, you will need to create a Connection Profile to define the connection information that enables the modem to access your wireless network and connect to the Internet.

This connection requires an active account with a wireless service provider.

Required Connection Information

When you set up your Connection Profile, you will need network access information from your wireless provider, which may include some or all of the following:

- **Access Point Name (APN):** identifies your wireless provider's network
- **Authentication Parameters:** Your provider may require you to authenticate your account when you access their wireless network. This information may include user name, password and domain.
- **DNS Server Information**
- **Other Settings Information** including HTTP Proxy Address (for Microsoft Internet Explorer only), Service Quality parameters (QoS), R99 QoS, Security, or Advanced Settings parameters

Creating a New Connection Profile

Step-by-step instructions and screenshots.

You can change your geographical region, ISP information and APN data by clicking the

arrow key for relevant pulldown menu. (See figure 4-9.)

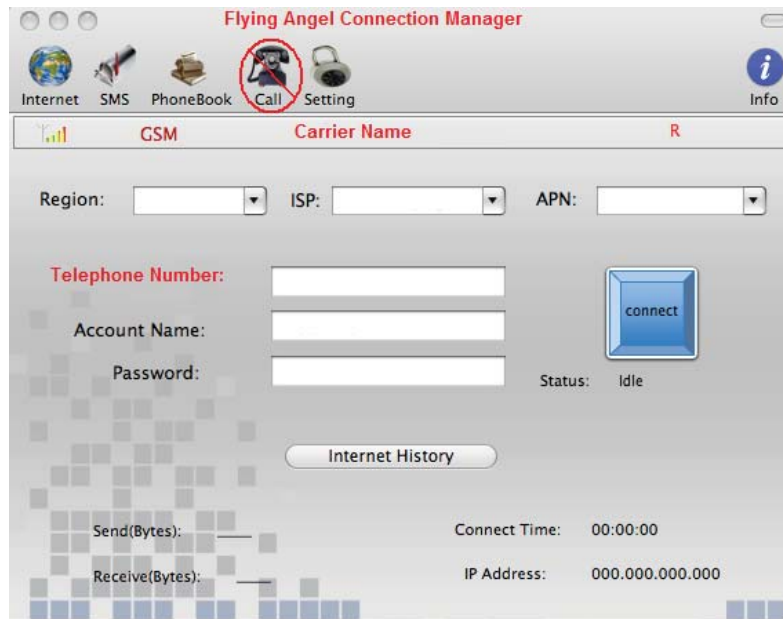


Fig. 5.2-2

5.2.3 Connect to the Internet

After you have set your connection parameters (Section 5.2.2), click the blue **[connect]** button to establish a connection.

When a connection has been established, data for **Send (Bytes)**, **Receive (Bytes)**, **Connect time**, and **IP Address** will be displayed. (See figure 5.2-3.)

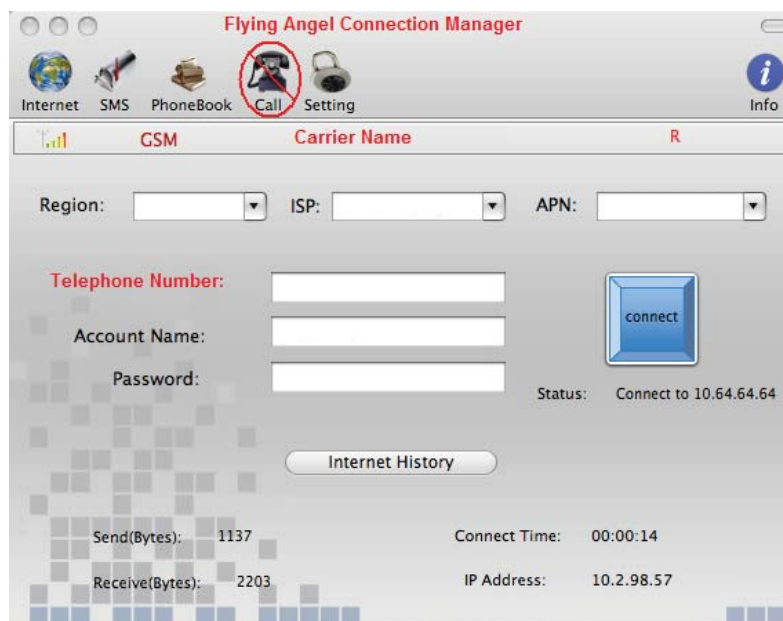


Fig. 5.2-3

Select **[Disconnect]** to close the connection.

5.2.4 SMS Messages



Click on the **SMS** icon in the tool bar to open the SMS main window, shown below in figure 4-11.

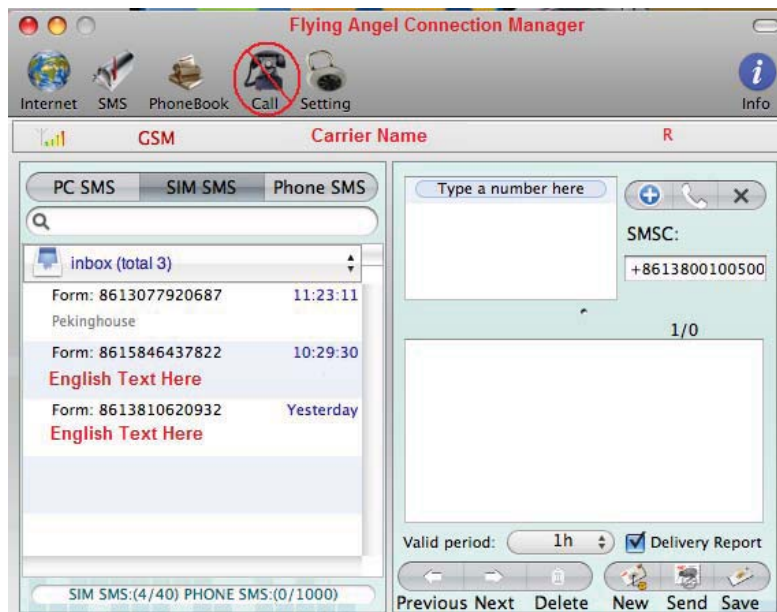




Fig. 5.2-4

To view SMS messages:

- Click the  button to select your view from the following folders: **inbox**, **send** (sent mail), **draft**.
- Click on **[PC SMS]** to open SMS messages saved to your computer
- Click on **[SIM SMS]** to open the messages saved to the SIM card in the Flying Angel modem
- Click on **[Phone SMS]** to open the messages saved to the phone (NOTE: What does this mean? What phone?)

To create a new SMS message:

- Click on  **New SMS** to create a new SMS message.
- Add multiple recipients by adding them in the **[Type a number here]** area

5.2.5 PhoneBook

Click on the **PhoneBook** icon in the tool bar to open the main window for your contact phone numbers, shown below in figure 5.2-5.

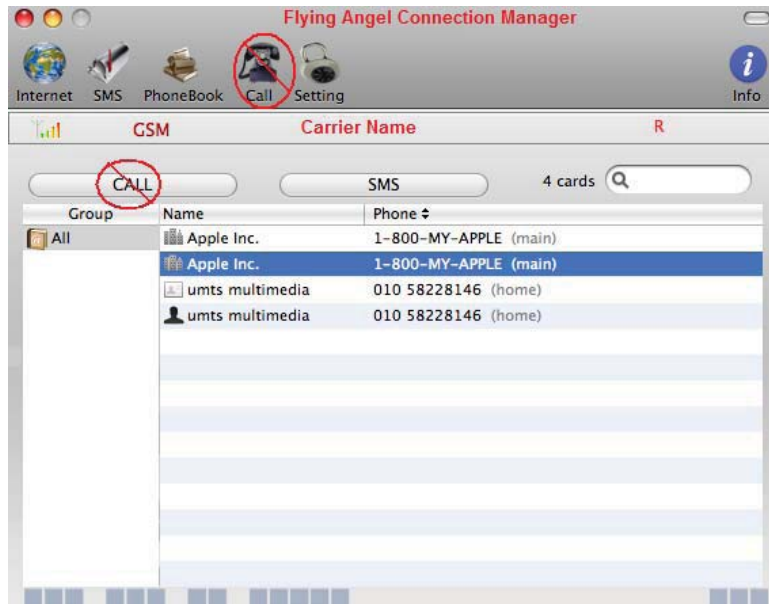


Fig. 5.2-5

To manage your contact list and send messages:

- Highlight your preferred contact(s) and select **[SMS]** to send an SMS message to one or more of your contact numbers.
- To edit contact information or export the contact, select the contact name and right click .

5.2.6 Settings

Click on the **Settings** icon in the tool bar to manage the settings for Connection Manager, shown below in figure 5.2-6.



Fig. 5.2-6

To change your Settings:

- **Security:** You can enhance security for your Flying Angel device by setting the SIM PIN setting: click **[On]** (for greater security) or **[Off]**. You may change the SIM PIN by clicking on **[Change PIN]**. *Do the SIM cards have an original PIN code that you need to know for this, or are you setting up one for the first time?*
- **Network Access:** Your wireless network access setting is set at **[Automatic]** by default. Click the check boxes for GSM Only or WCDMA Only to limit your designated wireless access.
- **Date and Time Settings:** Click **[Sync date & time with PC]** to sync your computer with the Flying Angel 3G Wireless Data Card.

Click **[Apply]** to activate any changes in Settings.

FCC RF Exposure requirements:

The highest SAR value reported under this standard during product certification for use next to the body is 0.828 W/kg. This transmitter must not be collocated or operating in conjunction with any other antenna or transmitter. USB dongle transmitter is approved for use in typical laptop computers. To comply with FCC RF exposure requirements, it should not be used in other devices or certain laptop and tablet computer configurations where the USB connectors on the host computer are unable to provide or ensure the necessary operating configurations intended for the device and its users or bystanders to satisfy RF exposure compliance requirements.

This device complies with part 15 of the FCC rules. Operation is subject to the following two conditions: (1) this device may not cause harmful interference, and (2) this device must accept any interference received, including interference that may cause undesired operation.

NOTE: The manufacturer is not responsible for any radio or TV interference caused by unauthorized modifications to this equipment. Such modifications could void the user's authority to operate the equipment.

NOTE: This equipment has been tested and found to comply with the limits for a Class B digital device, pursuant to part 15 of the FCC Rules. These limits are designed to provide reasonable protection against harmful interference in a residential installation. This equipment generates uses and can radiate radio frequency energy and, if not installed and used in accordance with the instructions, may cause harmful interference to radio communications. However, there is no guarantee that interference will not occur in a particular installation. If this equipment does cause harmful interference to radio or television reception, which can be determined by turning the equipment off and on, the user is encouraged to try to correct the interference by one or more of the following measures:

- Reorient or relocate the receiving antenna.
- Increase the separation between the equipment and receiver.
- Connect the equipment into an outlet on a circuit different from that to which the receiver is connected.
- Consult the dealer or an experienced radio/TV technician for help