

R1_LOW Photo



7. Rear Cover is removed.

Copyright(c) Mitsubishi Electric Corporation

(7 / 8)

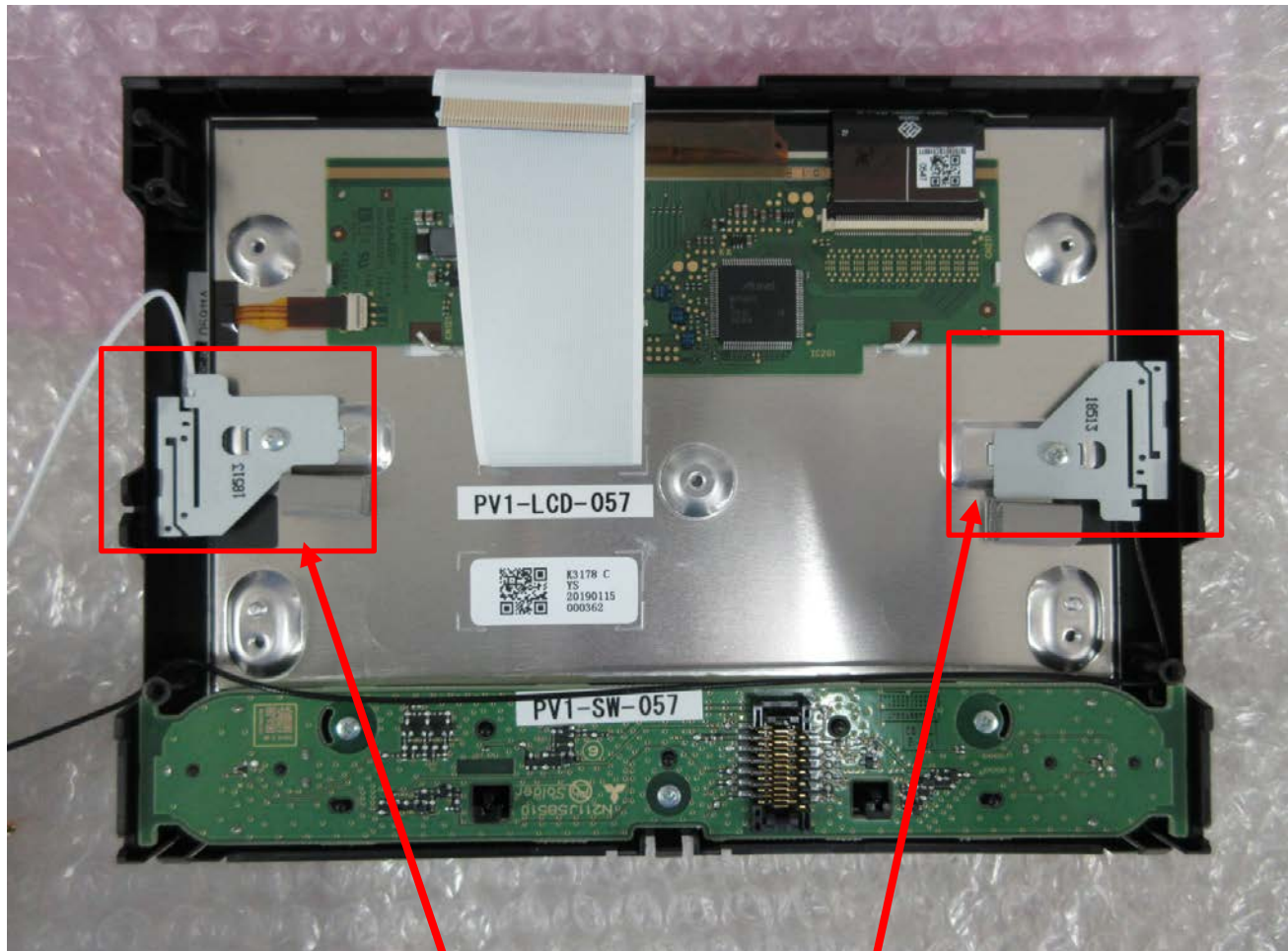
R1_LOW Photo



8. Display is removed.

Copyright(c) Mitsubishi Electric Corporation

(8 / 8)



Antenna (for BT/BLE/WLAN)

Antenna (for WLAN)