

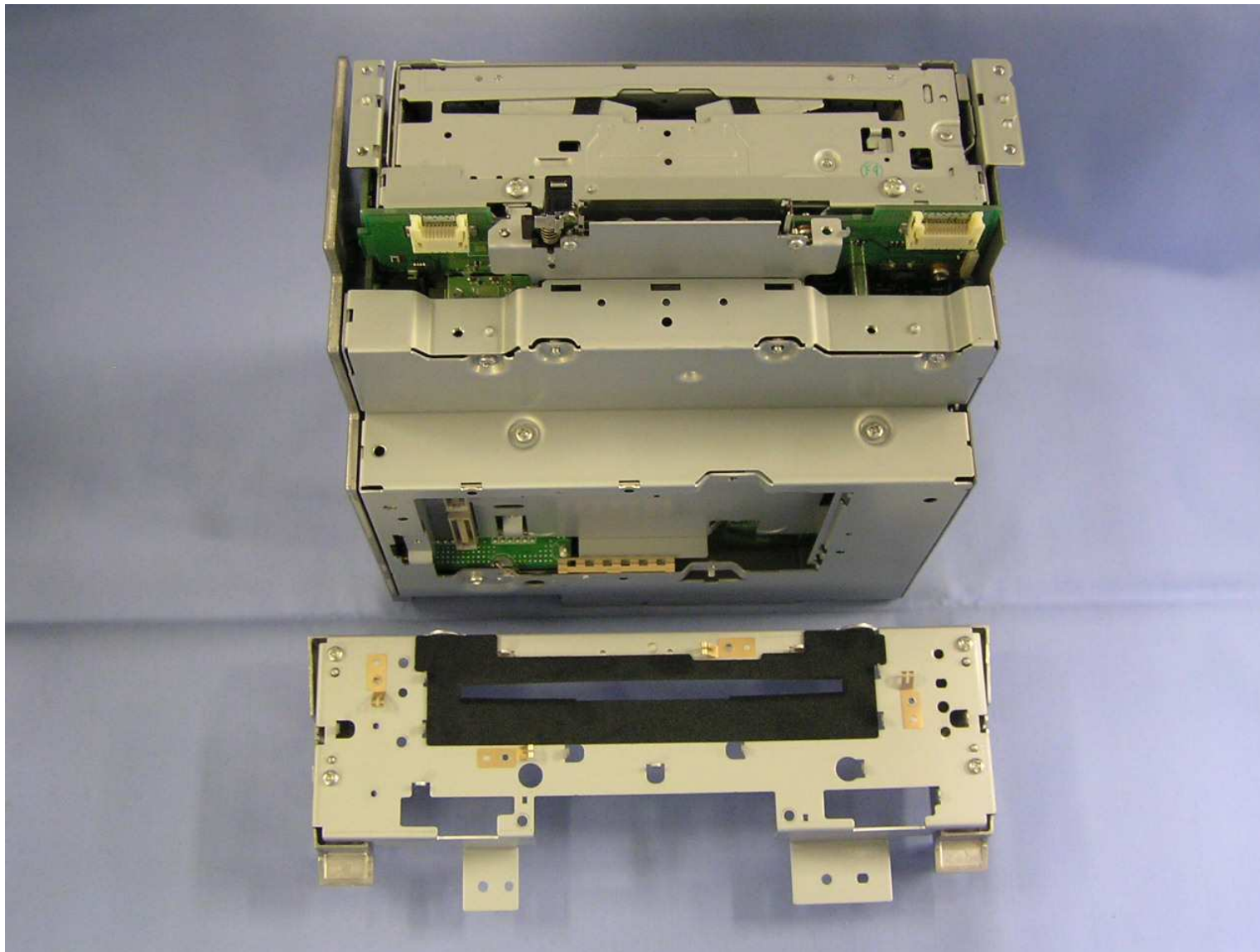
7. HDD unit is removed.



8. Top plate is removed.



9. Front panel is removed.

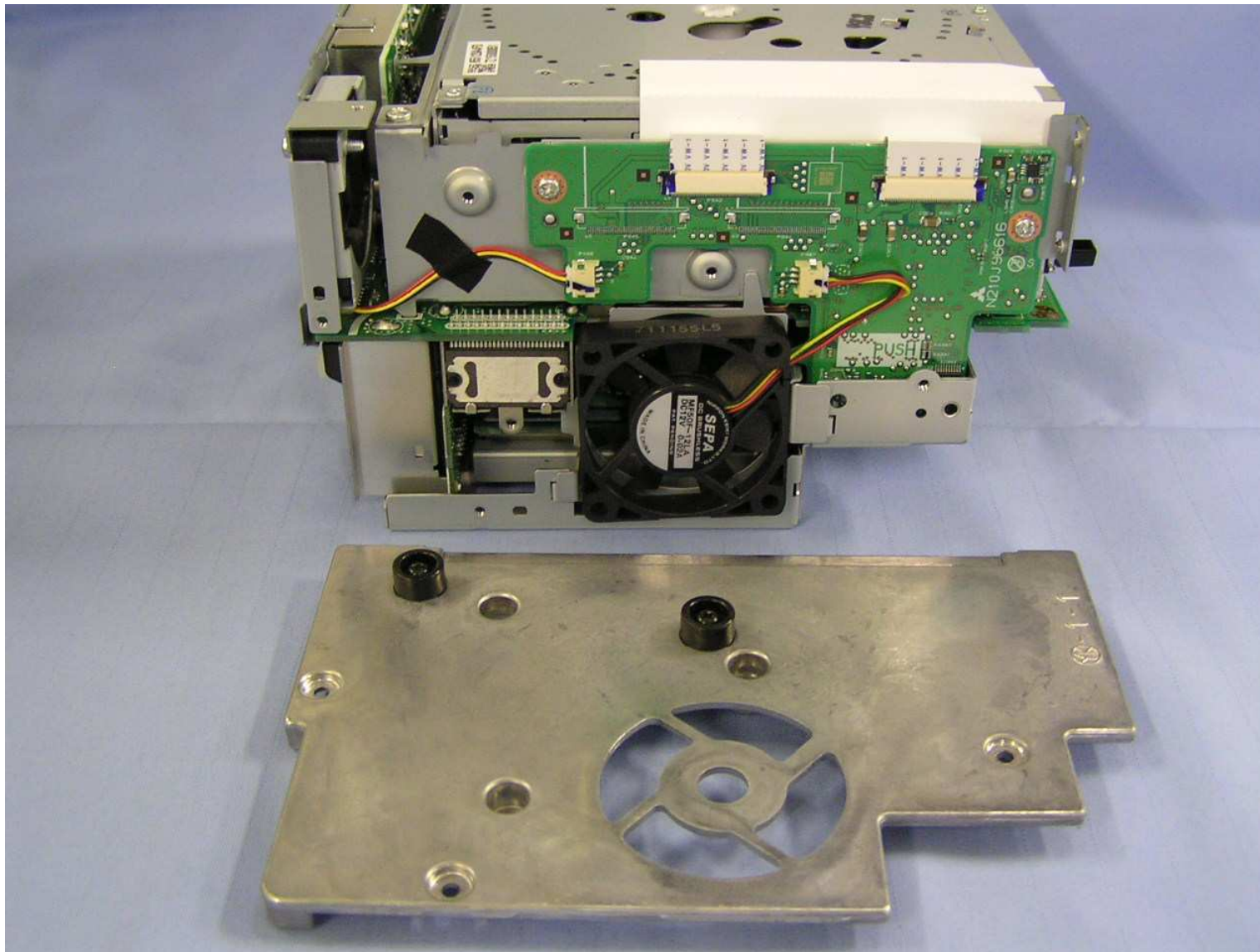


10. Front plate is removed.



[CONFIDENTIAL]

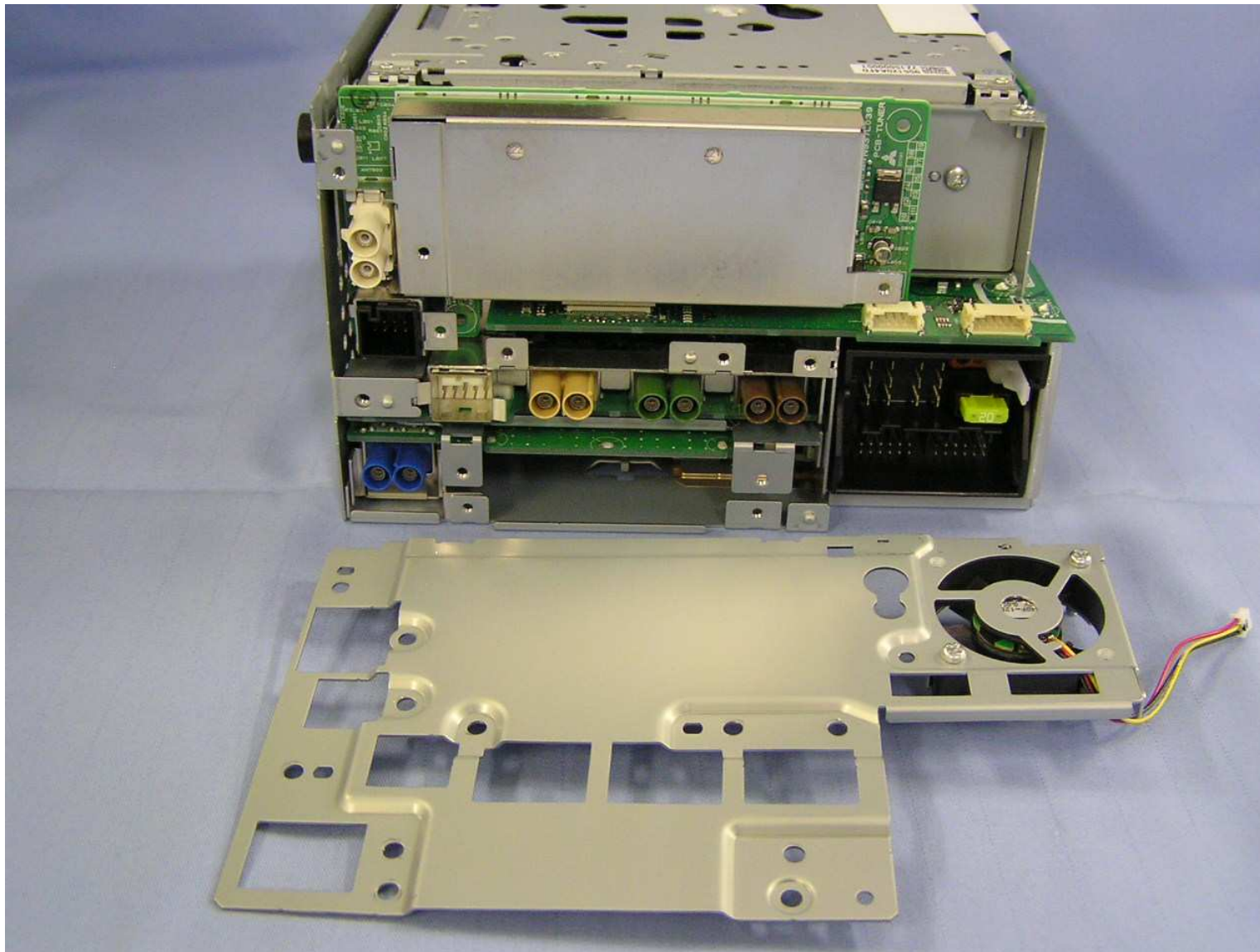
NR-212-6U Photograph



11. Right plate is removed.

[CONFIDENTIAL]

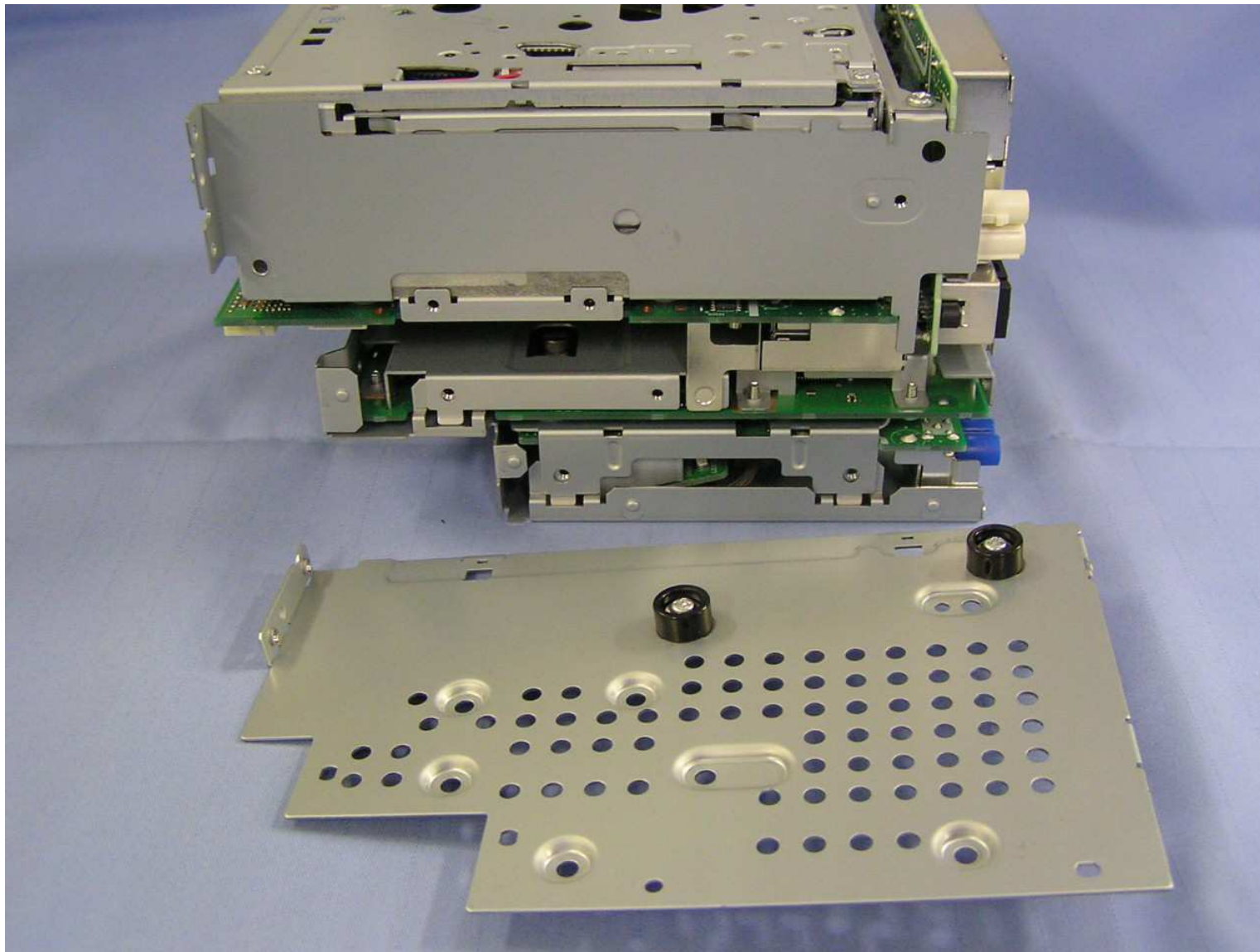
NR-212-6U Photograph



12. Rear panel is removed.

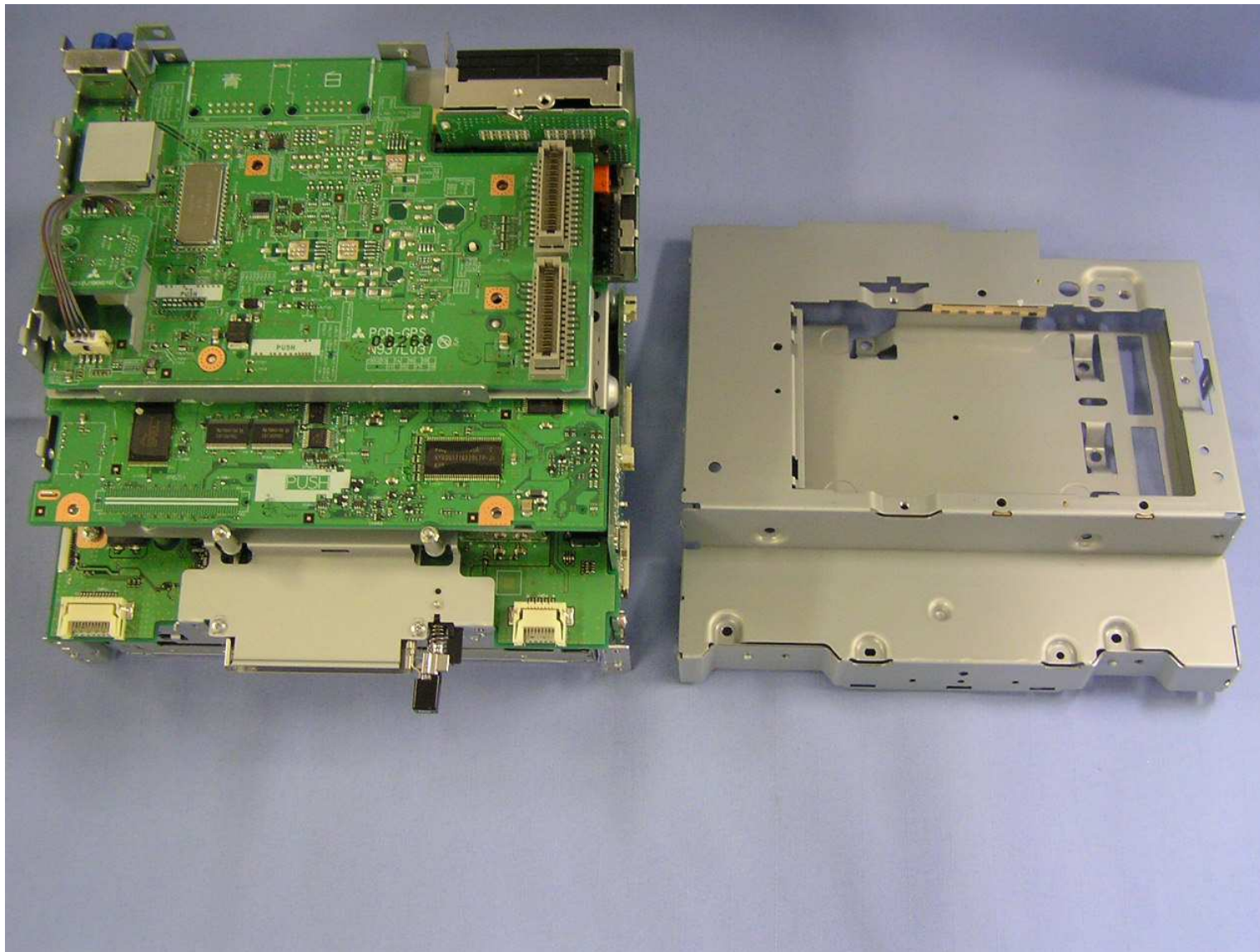
[CONFIDENTIAL]

NR-212-6U Photograph



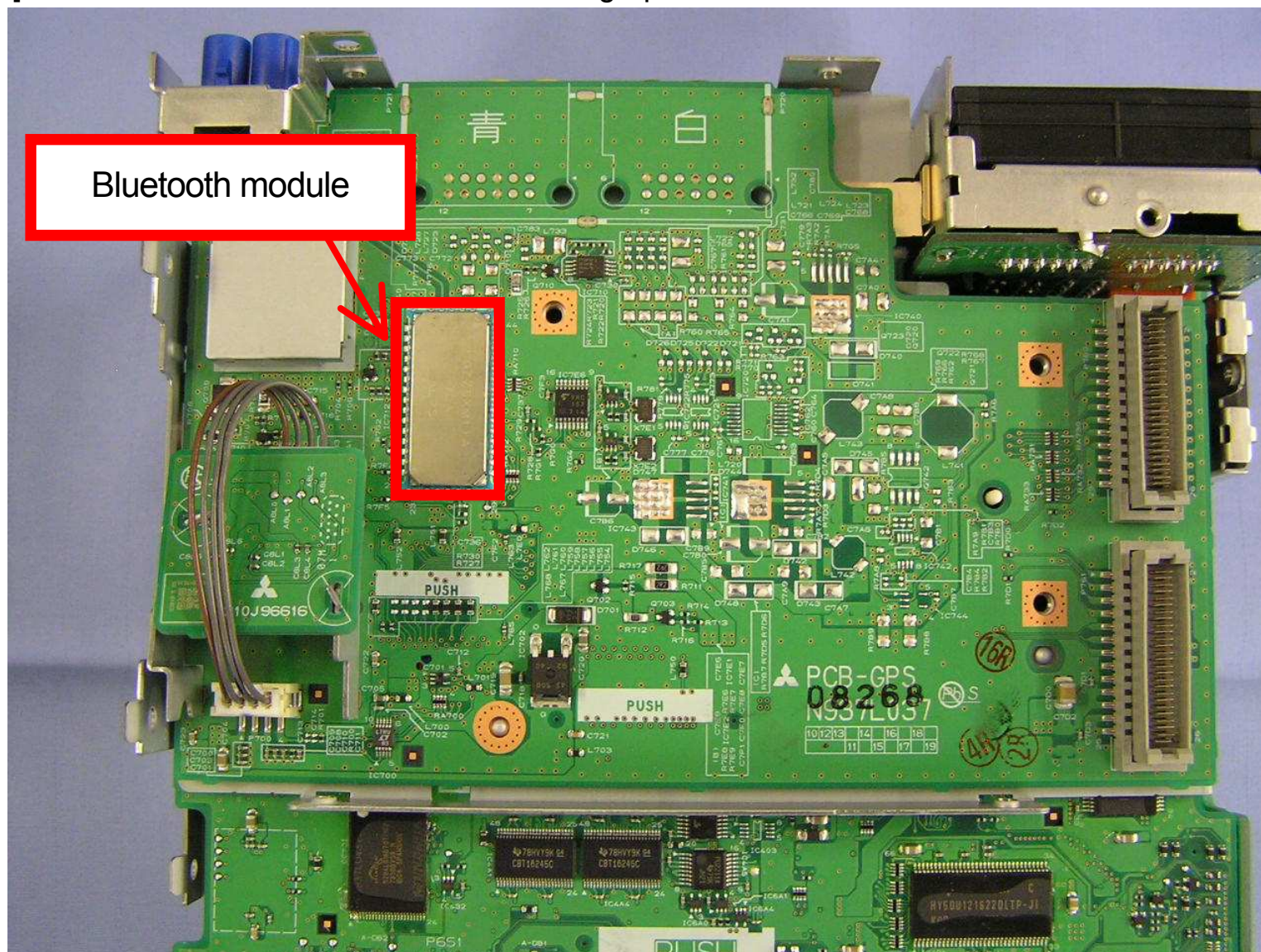
13. Left panel is removed.





14. Bottom plate is removed.





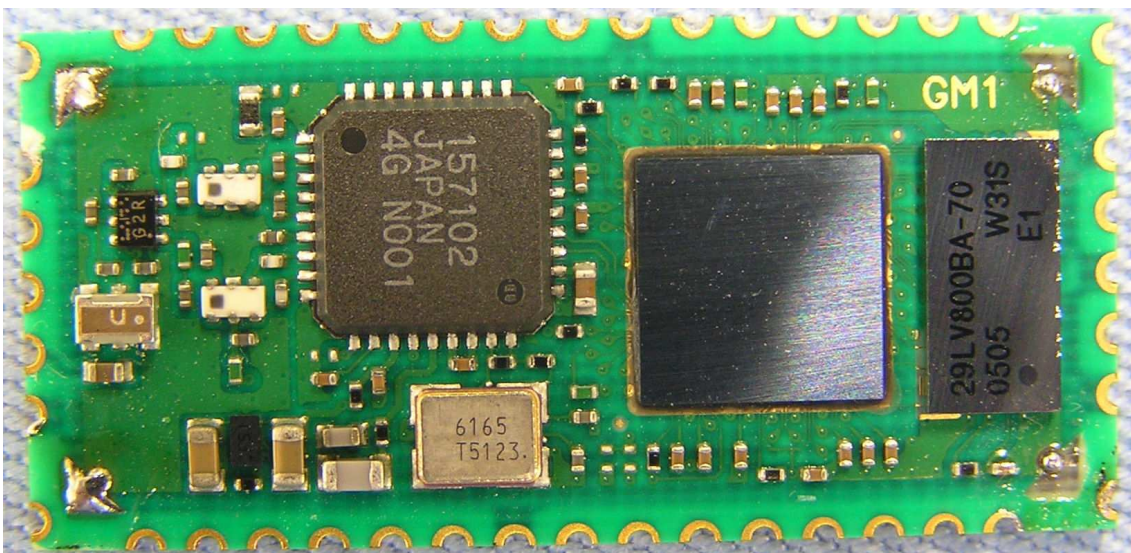
15. Bluetooth module is viewable on the PCB.



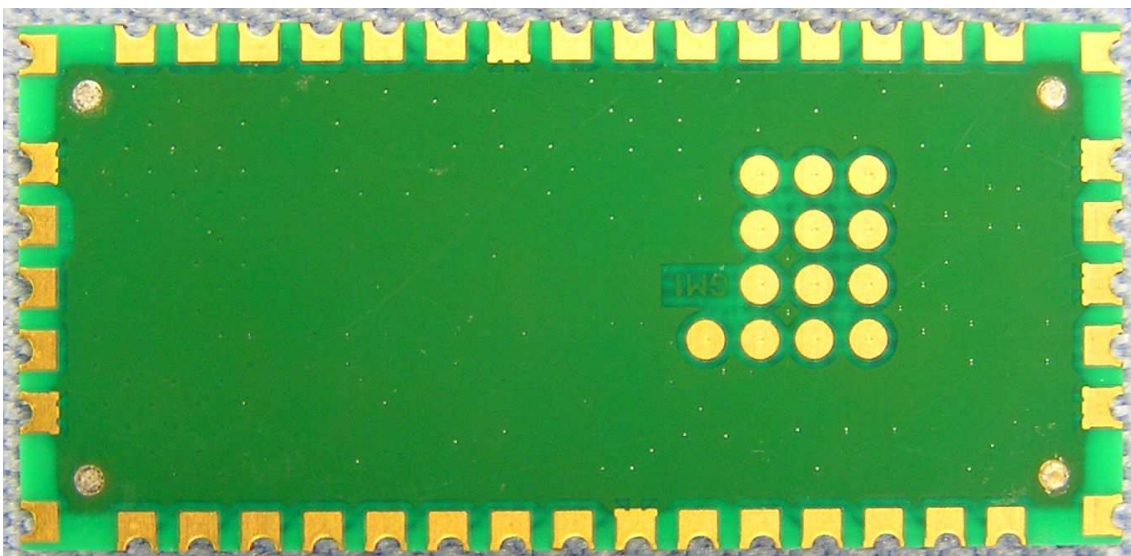
## Photograph of Bluetooth Module



Upper Side (with shield)



Upper Side



Lower Side