

# iBoom HiFi™

USER MANUAL

© 2008 Digital Lifestyle Outfitters

The DLO logo, Digital Lifestyle Outfitters and iBoom HiFi are trademarks of Digital Lifestyle Outfitters. iPod is a trademark of Apple Inc., registered in the U.S. and other countries.  
All Rights Reserved

M-78406-080107-F

Printed in China



# Contents

<b><a href="#">Quick Start</a></b>	<b><a href="#">4</a></b>
Multinational Power Supply	4
<b><a href="#">Included in the Box</a></b>	<b><a href="#">5</a></b>
<b><a href="#">Buttons + Controls</a></b>	<b><a href="#">6</a></b>
<b><a href="#">Using iBoom HiFi</a></b>	<b><a href="#">8</a></b>
Using iBoom HiFi with iPod	8
Using iBoom HiFi with Other Audio Devices	9
<b><a href="#">Tips + Troubleshooting</a></b>	<b><a href="#">10</a></b>
<b><a href="#">Tech Specs</a></b>	<b><a href="#">12</a></b>
<b><a href="#">Service + Support</a></b>	<b><a href="#">13</a></b>
<b><a href="#">Warranty</a></b>	<b><a href="#">14</a></b>
<b><a href="#">FCC Statement</a></b>	<b><a href="#">15</a></b>
<b><a href="#">Important Safety Instructions</a></b>	<b><a href="#">16</a></b>

## Quick Start

Thanks for purchasing the DLO iBoom HiFi – the perfect home sound solution for iPod. We will get you up and running in four easy steps. For more detailed instructions, please read [Using iBoom HiFi \[pg. 8\]](#).

**STEP 1** Plug iBoom HiFi into a wall outlet using the included AC power supply and appropriate adapter for your region.

**STEP 2** Place the appropriate Dock Insert (if necessary) for your iPod model into the iBoom HiFi dock. Then, slide your iPod into the dock.

**STEP 3** Press the **ON/OFF Button** on the top of iBoom HiFi.

**STEP 4** Press the **PLAY Button** on the top of iBoom HiFi.

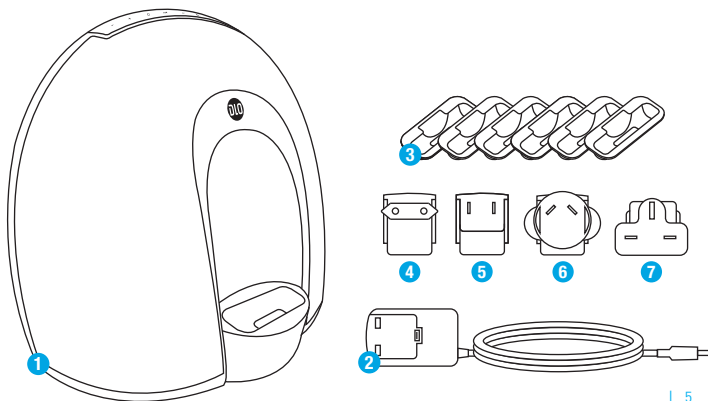
**NOTE:** The volume control function on your iPod is disabled while docked. Use the volume controls on the top of iBoom HiFi instead.

### Multinational Power Supply

iBoom HiFi comes with a Multinational Power Supply. First, choose the appropriate adapter for your region and attach it to the power supply. Then, plug the power supply into the back of iBoom HiFi, and plug the other end into the nearest available power outlet.

## Included in the Box

- 1 iBoom HiFi
- 2 Multinational Power Supply
- 3 Dock Inserts for iPod (touch, 3rd generation nano, 160GB classic, 2nd generation nano, 60GB video and 30GB video)
- 4 Adapter for Europe (except the United Kingdom, Ireland, Cyprus and Malta)
- 5 Adapter for North America, Central America and Japan
- 6 Adapter for Australia, New Zealand, Papua New Guinea and Argentina
- 7 Adapter for United Kingdom, Ireland, Cyprus, Malta, Malaysia, Singapore and Hong Kong



# Buttons + Controls

## When iPod is docked

**1 PREVIOUS TRACK**

Press once to restart the current track.  
Press twice to skip to the previous track.  
Press and hold to rewind the current track.

**2 NEXT TRACK**

Press once to skip to the next track.  
Press and hold to fast forward the current track.

**3 POWER ON/OFF**

Press to turn iBoom HiFi on and off.

**4 PLAY/PAUSE**

Press to play/pause the current track.

**5 VOLUME DOWN**

Press to lower the volume on iBoom HiFi.

**6 VOLUME UP**

Press to raise the volume on iBoom HiFi.

## When an audio device is connected via Aux-In

**1 PREVIOUS TRACK**

No function. Control playback using your device.

**2 NEXT TRACK**

No function. Control playback using your device.

**3 POWER ON/OFF**

Press to turn iBoom HiFi on and off.

**4 PLAY/PAUSE**

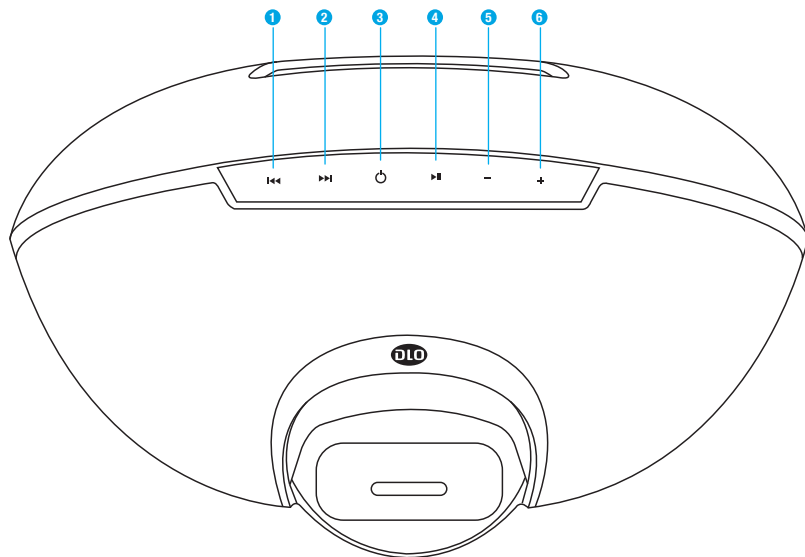
Press to mute the current track. Press again to resume playback.

**5 VOLUME DOWN**

Press to lower the volume on iBoom HiFi.

**6 VOLUME UP**

Press to raise the volume on iBoom HiFi.



# Using iBoom HiFi

Listening to your iPod or other portable audio device over a compact, high-fidelity speaker system is easy with iBoom HiFi. iBoom HiFi also charges your iPod when docked.

**NOTE:** Your iBoom HiFi features IR compatibility, which means you can control playback with most IR remote controls (available separately).

## Using iBoom HiFi with iPod

---

1. If needed, find the suitable Dock Insert for your iPod.
2. Once the Dock Insert is in place, slide your iPod into the iBoom HiFi dock.
3. Press the **ON/OFF Button** to turn on iBoom HiFi.
4. Use the **PLAY/PAUSE Button**, **PREVIOUS TRACK/NEXT TRACK Buttons** and **VOLUME Buttons** on your iBoom HiFi as needed.

**NOTE:** The volume control function on your iPod is disabled while docked. Use the volume controls on the top of iBoom HiFi instead.



### Using iBoom HiFi with Other Audio Devices

---

You can use iBoom HiFi as an external speaker for other audio devices using a 1/8" (3.5mm) stereo cable (available separately) following these simple steps:

1. Connect one end of a 1/8" (3.5mm) stereo cable into the Aux-In port on the back of iBoom HiFi.
2. Connect the cable's other end to your audio device's headphone or Line-Out jack.
3. Turn on iBoom HiFi. Now you can use the volume controls on iBoom HiFi to adjust your device's volume.

**NOTE:** To get the best sound quality from iBoom HiFi when using the Aux-In, carefully adjust the volume level of your device until there is no distortion. Then, control the overall volume of your music with the iBoom HiFi controls.

## Tips + Troubleshooting

### My iPod does not respond to iBoom HiFi when I plug it in.

1. Your iPod may not be docked properly. Remove your iPod from iBoom HiFi and check for any obstruction to the connector in the dock and on your iPod. Then re-dock your iPod.
2. iPod software may need to be updated. To upgrade software on your iPod, visit: <http://www.apple.com/iPod/download>
3. Make sure your iPod is working properly before docking into iBoom HiFi. If your iPod is frozen and will not respond, you may need to reset your iPod. To do this, press and hold the Menu and Center Button on your iPod for 10-12 seconds, or until your iPod resets. Please refer to your iPod manual for details.

### My iPod did not charge while docked in the iBoom HiFi.

Your iPod may not be docked properly. Remove your iPod from iBoom HiFi and check for any obstruction to the connector in the dock and on your iPod. Then re-dock your iPod.

### My sound is distorted.

Remember that, because the volume output on your iPod cannot be controlled when docked, you can only control volume using the iBoom HiFi **VOLUME Buttons**.

1. The volume may be set too high. Decrease the volume on iBoom HiFi.
2. The sound source may be distorted. If the iPod original sound source is of poor quality, distortion and noise are easily noticed with high volume.
3. The EQ settings on your iPod may need to be adjusted for optimum sound quality.

**NOTE:** When using an audio device via the iBoom HiFi's Aux-In, the volume is controlled with both the audio device and the iBoom HiFi. Make sure to adjust the volume level of your audio device until there is no distortion. Then, control the overall volume of your music with the iBoom HiFi controls.

# Tech Specs

**OUTPUT POWER:** 5 Watts/Channel @ 6 ohms (Tweeters) & 4 ohms (Woofers)

**POWER CONSUMPTION:** 5 Watts x 2

**FREQUENCY RESPONSE:** 80Hz ~ 20 KHz

**SIGNAL TO NOISE RATIO:** 50dB

**PRODUCT DIMENSION:** 300mm (W) x 240mm (H) x 190mm (D)

## WEIGHT:

- iBoom HiFi: 70.5oz (2000g)
- AC adapter: 8.5oz (240g)

## POWER SUPPLY:

- DC input: 15 V  $\pm$  1.5 A



## COMPATIBILITY:

- iPod touch
- 3rd generation iPod nano
- iPod classic
- 2nd generation iPod nano
- 5G iPod with video
- 1st generation iPod nano
- 4G iPod
- iPod mini

## Service + Support

For more information, updates and tips, please visit our website at [www.dlo.com](http://www.dlo.com) and click [Support](#).

# Warranty

## Digital Lifestyle Outfitters Limited Manufacturer's Warranty

**What This Warranty Covers.** DLO [Digital Lifestyle Outfitters] warrants this product against defects in materials and workmanship. This limited warranty applies only to products manufactured by or for DLO.

**What This Warranty Does Not Cover.** This warranty does not apply to damage caused by: (a) accident, abuse, misuse, misapplication, ordinary wear, improper maintenance, failure to follow instructions, or products not manufactured by or for DLO; and (b) aftermarket services (including upgrades and expansions).

**How Long This Warranty Lasts.** This warranty lasts for a period of ninety [90] days from the date of original retail purchase.

**What DLO Will Do.** If a defect exists, DLO will exchange the product, at its option, with a product that is new or has been manufactured from new or serviceable used parts and that is at least functionally equivalent to the original product. DLO will warrant a replacement product against defects in materials and workmanship for a period of ninety [90] days from the date of replacement.

**How To Get Service.** In order to be eligible for this warranty, you **MUST** register your purchase at [www.dlo.com/register](http://www.dlo.com/register) within thirty [30] days of purchasing this product. If you believe that this product is defective in materials or workmanship, please e-mail [customerservice@dlo.com](mailto:customerservice@dlo.com) with a brief description of the problem, for further instructions.

**No Change To Warranty.** No DLO reseller, agent or employee is authorized to make any modification, extension, or addition to this warranty.

**How State Law Applies.** This warranty gives you specific legal rights, and you also may have other rights that vary from state to state, or country.

**Restrictions On Implied Warranties.** All implied warranties, including, without limitation, warranties of merchantability and fitness for a particular purpose, are limited in duration to the duration of this warranty. Some states do not allow limitations on how long an implied warranty lasts, so the above limitation may not apply to you.

**Restrictions On Damages.** DLO is not responsible for direct, special, incidental or consequential damages resulting from any breach of warranty or condition or under any other legal theory (including, without limitation, lost profits; downtime; goodwill; damage to or replacement of equipment and property; failure to maintain the confidentiality of data stored on the product; and any costs of recovering, reprogramming or reproducing any program or data stored in or used with products manufactured by or for DLO). Some states and countries do not allow the exclusion or limitation of incidental or consequential damages, so the above limitation or exclusion may not apply to you.

W1000-050803-B

# FCC Statement

## **Federal Communications Commission Interference Statement**

This device complies with Part 15 of the FCC rules. Operation is subject to the following two conditions:

(1) This device may not cause harmful interference, and (2) this device must accept any interference received, including interference that may cause undesired operation.

**CAUTION:** The manufacturer is not responsible for any radio or TV interference caused by unauthorized modifications to this equipment. Any such modification could void the user's authority to operate the equipment.

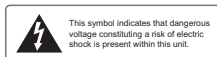
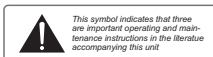
# Important Safety Instructions



**CAUTION:** TO AVOID THE HAZARDS OF FIRE OR ELECTRICAL SHOCK, DO NOT EXPOSE THIS APPLIANCE TO RAIN OR OTHER MOISTURE

**CAUTION:** TO PREVENT ELECTRIC SHOCK, MATCH WIDE BLADE OF PLUG TO WIDE SLOT

**CAUTION:** TO REDUCE OF ELECTRIC SHOCK, DO NOT REMOVE COVER (OR BACK). NO USER-SERVICEABLE PARTS INSIDE. REFER SERVICING TO QUALIFIED SERVICE



Please read all safety and operating instructions carefully before use and keep these for future reference

**Water and Moisture** - Keep the set free from moisture, water and dust

**Ventilation** - The unit should be situated so that its location or position does not interfere with its proper heat ventilation. For example, it should not be situated on a bed, sofa, rug or similar surface that may block ventilation openings. Also, it should not be placed in a built-in installation, such as bookcase or cabinet, which may impede the flow of air through the ventilation openings.

**Heat** - The unit should be situated away from heat sources such as radiators, heat ducts, stoves or appliances (including amplifiers) that generate heat.

**Power Sources** - The unit should be connected to a power supply only of the type described in the operating instructions or as marked on the unit.

**Powercord Protection** - Power supply cords should be routed so that they are subject to wear or abuse. It is always best to have a clear area from where the

cord exists the unit to where it is plugged into an AC outlet.

**Cleaning** - Clean only with a dry cloth. Do not use aerosol or liquid cleansers. Unplug the product before cleaning.

**Objects and Liquid Entry** - Care should be taken so that objects do not fall and liquids are not spilled into any openings or vents located on the product

**Attachments** - only use attachments specified by the manufacturer

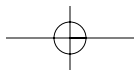
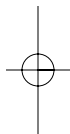
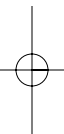
**Lighting & power surge protection** - Unplug the unit from the wall outlet and disconnect the antenna or cable system during a lightning storm.

This will prevent any damage to the unit

**Overloading** - Do not overload wall outlets, extension cords, or integral convenience receptacles as this can result in a risk of fire or electric shock.

**Servicing** - Never attempt to repair this product yourself. This unit does not contain any user-serviceable parts.





Thank you for purchasing the  
**DLO iBoom HiFi**



DIGITAL LIFESTYLE OUTFITTERS • VISIT US AT [WWW.DLO.COM](http://WWW.DLO.COM) • ©2008 DIGITAL LIFESTYLE OUTFITTERS