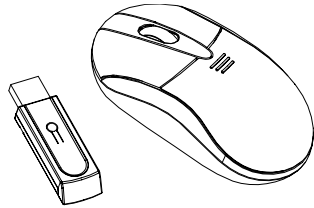


AMX-300 User Manual

Thank you for selecting New Times serial products.

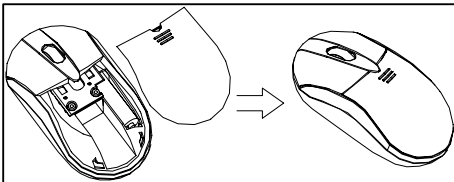
These serial products combine the receiver and recharge function with internal receiver and easy taking.



☐.Install Battery

☐.

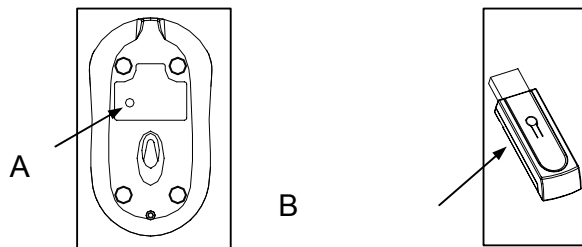
Please review Picture 1 .



Picture 1 .

☐☐Connect equipment

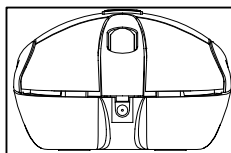
Please put the receiver into the USB connector, press the button B for one second, and then press button A for one second. Note: you must finish each connection steps in 15 seconds. Please review Picture 2.

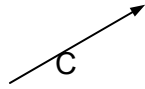


Picture 2

☐☐ Recharge

Please use the power cable connect USB connector and the mouse DC connector and the red light for the wheel is on when working. The red line is off when finishing the recharge. Please review Picture 3.





Picture 3

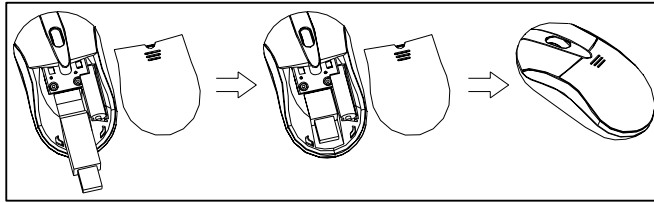
☐ ☐ Save power

The mouse goes to the mode of saving power when it is free for 10 seconds, then you have to click the left key to wake up the work.

☐ ☐ Take

Put the receiver inside the mouse to save space when you take it. Please review Picture

Picture 4



Picture 4

Note: Changes or modifications to this unit not expressly approved by the party responsible for compliance will void the user's authority to operate the equipment. Any change to the equipment will void FCC grant.

This equipment has been tested and found to comply with the limits for a Class B digital device, pursuant to part 15 of the FCC Rules. These limits are designed to provide reasonable protection against harmful interference in a residential installation. This equipment generates, uses and can radiate radio frequency energy and, if not installed and used in accordance with the instructions, may cause harmful interference to radio communications. However, there is no guarantee that interference will not occur in a particular installation. If this equipment does cause harmful interference to radio or television reception, which can be determined by turning the equipment off and on, the user is encouraged to try to correct the interference by one or more of the following measures:

- Reorient or relocate the receiving antenna.
- Increase the separation between the equipment and receiver.
- Connect the equipment into an outlet on a circuit different from that to which the receiver is connected.
- Consult the dealer or an experienced radio/TV technician for help.