

HY—2677A Real-Time Service Paging System

User Manual

CONTENTS

1. Brief Introduction	2
2. Notice	2
3. Components Of System	3
4. Installation Preparation	3
5. Installation And Operation	3
6. Software Operation	4
7. Technical Specification	9

This equipment has been tested and found to comply with the limits for a Class B digital device, pursuant to Part 15 of the FCC Rules. These limits are designed to provide reasonable protection against harmful interference in a residential installation. This equipment generates, uses and can radiate radio frequency energy and, if not installed and used in accordance with the instructions, may cause harmful interference to radio communications. However, there is no guarantee that interference will not occur in a particular installation. If this equipment does cause harmful interference to radio or television reception, which can be determined by turning the equipment off and on, the user is encouraged to try to correct the interference by one or more of the following measures:

- Reorient or relocate the receiving antenna.
- Increase the separation between the equipment and receiver.
- Connect the equipment into an outlet on a circuit different from that to which the receiver is connected.
- Consult the dealer or an experienced radio/TV technician for help.

The user is cautioned that changes or modifications not expressly approved by the party responsible for compliance could void the user's authority to operate the equipment.

1. Brief Introduction:

HY—2677A real-time service calling system, it is a perfect combination of wireless communication and computer technology, it is a fashionable and High-Tech electronic product, apply to barroom, KTV, dance hall, the hall and compartment of the hotel etc., When the guest need service and press " service " button, the controller will show corresponding number of table.

2. Notice:

1. This product is only used indoor.
2. Please cut off the power when do not use, don't draw the cable of the plug, hold plug and take down directly.
3. For prevent get an electric shock, fire or other dangerous, don't take down the screw, cover or the chassis.
4. Please don't cover paper, cloth on the controller, especially don't cover the metal material.
5. Please don't put the controller near the large area metal thing.
6. Please don't put in the sunshine directly.
7. Please don't expose the controller at the position that near rainwater, moist, drips or apt spatter drips.
8. Pay attention to check battery state of caller, and take out in time when the battery is insufficient to prevent leakage of battery and corrode the PCB of caller.
9. While dealing with discarded battery, must consider the environmental protection, and strictly observe local relevant laws or regulations of dealing with discarded battery.
10. Please don't put the caller in moist environment for a long time, don't put in water. If not carelessly it is drenched by water, please rapidly take out all the batteries in caller, and make it dry at normal temperature, before the PCB of caller is not totally dry, make sure not to install battery again.
11. Don't dismantle controller, caller and the pager, because there is not part to maintenance by user inside.
12. If present any question, please cut off the power of controller and get in touch with local distributor.

3. Components Of System:

HY—2611A Controller



HY-2611A Contains receive, process, display and parameter setting function.

HY-2610A Wireless Caller (Caller)



Press the service bottom, can transmit wireless call signal.

4. Installation Preparation:

1. Caller No.: generally, the number of caller preset as 01,02,03...10, it can be reset according to actual request by software.
2. Choose a proper position to put the controller, generally put in a open place, but must be far away from the large area metal object, avoid unnecessary signal shielding or interfere.

5. Installations And Operation:

1. This system adopts complete wireless designing, it is not need connect up and simple to construct.
2. Fix controller: choose a proper position to fix controller, there should be 220V AC power or wiring board around the position. The installation way can choose to be slung or hang on the wall.
3. The caller needn't installation, it can be used when complete setting table number
4. The teleoperator can adjust the volume of prompt voice of controller. When the volume set up to 0, it is in mute states. The teleoperator can clear the messages that showed on the display of controller.
5. Press the button of caller to send calling message, the indicator lamp of caller will light at the same time. When sending is complete the indicator lamp will put out.
6. The caller uses 3 AAA 1.5V batteries.

6. Software Operation:

1. All corresponding relation and the number of caller and pager can through

Constant

modify the parameter of controller by software. Generally caller and pager needn't be set up.

2. Insert CD disc in CD-ROM drive and browse, double-click on setup.exe file to setup software step by step.

3. Software operation:

3.1 When finished installation, click Start -> Program->servicecallerssetup to run software, the setting interface as follows:

The screenshot shows the 'ServiceCaller Setup' window. It has a title bar with a standard Windows icon and a close button. The window is divided into several sections. At the top, there's a 'PORT' section with a dropdown menu set to 'COM1' and an 'open' button. To the right, 'Port Status:' is set to 'Port closed'. Below this, there are fields for 'Receiver Number', 'Screen Parameter', 'Display mode' (set to 'Flash'), and 'Interval (S)'. There are also fields for 'Receiver Freq (MHz)' and 'Transmitter Freq (MHz)', each with a 'SAVE' button. A 'Setup the pager' section contains fields for 'PagerNumber', 'AddressCode', 'Symbol' (set to 'Standard'), 'Polarity', 'BandRate' (set to '1200'), and 'Tone' (set to 'Tone1'), with a 'SAVE' button. Below this, there are two sections: 'Setup receiver number' with a 'ReceiverNumber' field and 'SAVE' button, and 'Setup service caller' with 'CallerNumber', 'ReceiverNumber', 'Pager1', and 'Pager2' fields, and a 'SAVE' button. At the bottom, there are three 'Del' sections: 'Del pager number' with 'PagerNumber' and 'DEL' button, 'Del receiver number' with 'ReceiverNumber' and 'DEL' button, and 'Del servicecaller number' with 'CallerNumber' and 'DEL' button. At the very bottom, there are four buttons: 'Initialize the receiver', 'Initialize the host', 'Read', and 'Exit (x)'.

3.2 Function of setting

- Initialize the controller
- Initialize receiver
- Setting caller
- Setting the controller
- Setting the frequency of transmitter (optional)

Other function:

- Delete pager number
- Delete table number

3.3 Operating sequence

Select port

Connect one of the end of data cable to a nine-pin "D" type port of controller, another end of data cable connects to a serial port COM1 of computer or COM2 and then click "open" to choose a port.

This is a close-up of the 'PORT' dropdown menu from the setup window. It shows a list of options: 'COM1' (which is currently selected and highlighted), 'COM2', and 'COM3'. To the right of the dropdown is an 'open' button. Below the dropdown, the text 'Receiver Number' is partially visible.

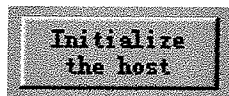
Power supply

Plug the power plug into AC socket, to ensure the controller will work.

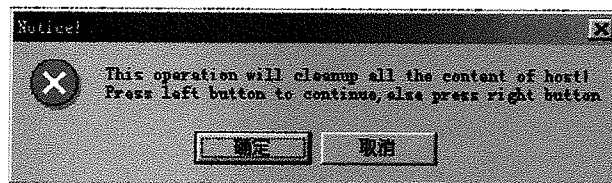
Initialize the controller

It needs to initialize the controller first to a service system. If you want to modify the system on the original basis, then can't initialize , jump to the 4th step.

Click the button:



Then will popup a window:



Click "cancel" will quit the operation, if you click "confirm" and initialize successfully, then will popup a window:

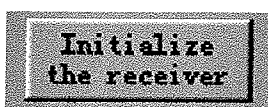


If popup the window as below, it means communication fail, please check whether or not choose a proper port.



Initialize receiver

To a new receiver or want to reset a receiver, it need to Initialize, the operation is similar to initalize controller. Or else, jump to next step.

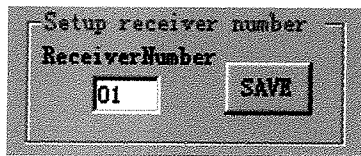


Setting receiver No.

In order to let receiver can be scan by controller, the receiver number can be

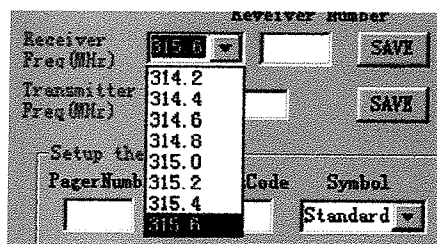
Constant

set from 01-80. For instance, if you want to set the number of receiver as 01, please input 01 in the text frame, and then click "SAVE".



Setting the frequency of receiver

Choose a proper frequency of receiver to ensure receiver working well. The controller has 8 frequency values inside. Choose one frequency and click "SAVE". As follows illustrate:



Note: If contain more than one receiver in a system, repeat doing above step.

Setting caller

Store up the corresponding relation of caller, receiver and pager in controller and receiver.

There are two ways to setting:

- Needn't assign number of receiver, in this case, must assure only one receiver connect to controller.
- Assign number of receiver: only the receiver that has assigned will stored the eigenvalue of caller, it is applicable for the system that needs to add caller. For instance: assign a caller for 18th table, decode by No.01receiver,:



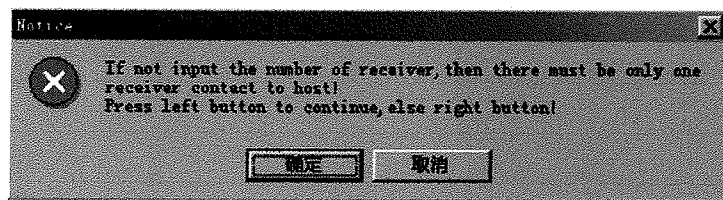
the range of receiver number is 01-80.

Click "SAVE" button, and press the button of caller within 4 seconds, if return as follows:



It means setting up successfully, if return "memory full", it means the memory for storing eigenvalue is full, need to change another receiver or initialize this receiver.

If use the second setting way but no assign the receiver number, click "SAVE" will prompt:

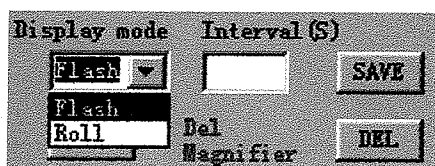


And then click "CANCEL" to quit setting, if click "CONFIRM", the follow up step is the same as the first setting way.

Setting display mode

The screen of controller has two display modes: scroll or blink, the time interval can assign by user.

- Scrolling mode: In this mode, the new calling will show on the left of screen with big character, then move from left to right automatically according to time interval (for example 4 seconds) that sets for, till disappearing. When showing on, the controller will not respond the same calling.
- Flash mode: In this mode, the new calling show on the left of screen with big character, and blink according to time interval (for example 10 seconds) that sets for, and then show on the screen at rest, will not disappear. If receive next new calling, it will show on the left of screen and blink to indicate it is new, the old message will move to right automatically, When showing on, the controller will not respond the same calling.



Choose the display mode and the time interval, and then click "SAVE".

Deleting table number

If controller is connecting with receiver, when deleting caller record in the controller, it will delete the eigenvalue of caller in the receiver at the same time. If controller is not connecting with receiver, just delete the record in the controller.

8. Technical specification

1. Capacity of receiver: 80
2. Capacity of caller corresponding to per receiver: 80
3. Capacity of pager corresponding to per table number: 2

Constant

4. Coverage of caller: 100m (open area)
5. Coverage of POCSAG transmitter: 300m (open area)
6. Power of caller: 20mW
7. Battery life of caller: 6 month
8. Power of external signal amplifier: 50mW
9. Transmit power of controller: <500mW
10. Capacity of table number in queue of controller: 8
11. Display mode of screen: Scroll and blink`
12. Power supply of HY-2610A: 3.6V, uses 3 Entries AAA battery
13. Power of controller: AC220V
14. Response time: <300mS

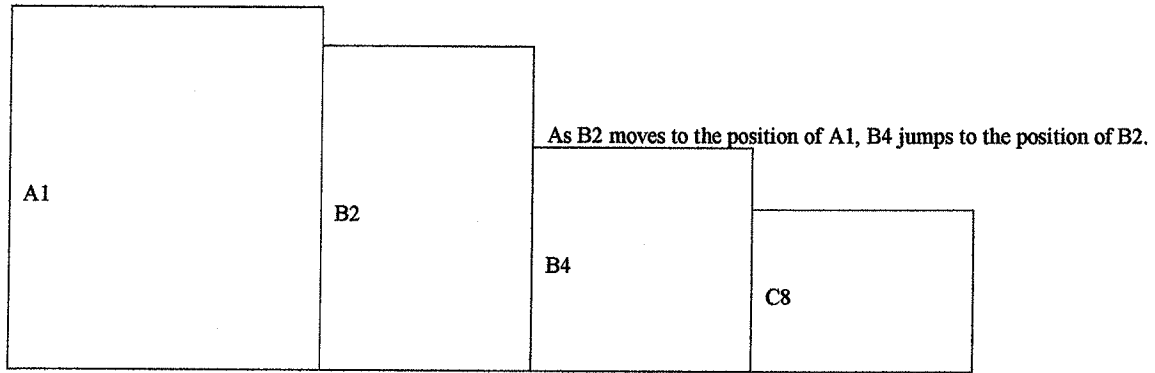
----END----

Annex 1 Technical specifications of the wireless requester

Name	Specifications	Description
Wave type	F1D	Frequency modulation, no transmission of carrier or data
Frequency	426.050MHz	
Channel spacing	12.5kHz	One channel
Oscillation mode	single crystal oscillation	Sextuple
Antenna type	Ring	
Antenna structure	$\lambda/4$	
Antenna gain	Below 2.14dbi	No grounding device
Output power	Below 1 mW	(Tolerance +20% ... -50%)
Communication mode	One way	
Frequency tolerance	$\pm 4\text{ppm}$	(+5° - +40°)
Occupied frequency bandwidth	8.5kHz	
Spurious radiation	Below 2.5 μ W	
Adjacent suppression	Above 40db	
Transmitting time restriction		Transmitting once for about 1.6 s in 5 s, no more transmitting in 2 s
Interference control function		Automatic transmitting identification code
Miscellaneous		The structure ensures no stripping of the circuit part.
Lead-bearing circuits		Allowed

Annex 2 Basic function of the wireless requesting service system

1. Appearance of the HY2611G model
2. Numerals or letters displayed on the main screen can be set by the user in specified ranges (01-99, A0-J9), configurable by the user through remote control. The remote control supports the deletion function.
3. Infrared control mode for the remote control
4. Wireless requester numbers displayed on the main screen pause for 30 s moving from the right leftward. The first message is arranged at the leftmost, the following numbers arranged orderly in this way. The displaying at the leftmost disappears automatically in 30 s, and the numbers at the right move leftward in turn, repeating similarly (see Figure 1).
5. When the main screen is full of messages, eight pieces of waiting messages can be recorded for sequential calls.
6. Each window accommodates two digits or one letter and one digit.
7. The working voltage for the host is 100V, 50 - 60Hz.



As A1 disappears, B2 jumps to the position of A1.

A1 disappears automatically in 30 s.

As C8 moves to the position of B4, C8 jumps to the position of B4.

Note: The first waiting digit is displayed in the position of C8 after C8 jumps to the position of B4.

Repeat similarly.

Figure 1 Illustration of the displaying

HY-2610A Wireless Caller (Caller)



Press the service bottom, can transmit wireless call signal.

4. Installation Preparation:

1. Caller No.: generally, the number of caller preset as 01,02,03...10, it can be reset according to actual request by software.
2. Choose a proper position to put the controller, generally put in a open place, but must be far away from the large area metal object, avoid unnecessary signal shielding or interfere.

5. Installations And Operation:

1. This system adopts complete wireless designing, it is not need connect up and simple to construct.
2. Fix controller: choose a proper position to fix controller, there should be 220V AC power or wiring board around the position. The installation way can choose to be slung or hang on the wall.
3. The caller needn't installation, it can be used when complete setting table number
4. The teleoperator can adjust the volume of prompt voice of controller. When the volume set up to 0, it is in mute states. The teleoperator can clear the messages that showed on the display of controller.
5. Press the button of caller to send calling message, the indicator lamp of caller will light at the same time. When sending is complete the indicator lamp will put out.
6. The caller uses 3 AAA 1.5V batteries.