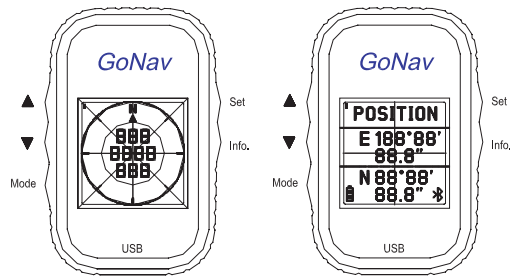
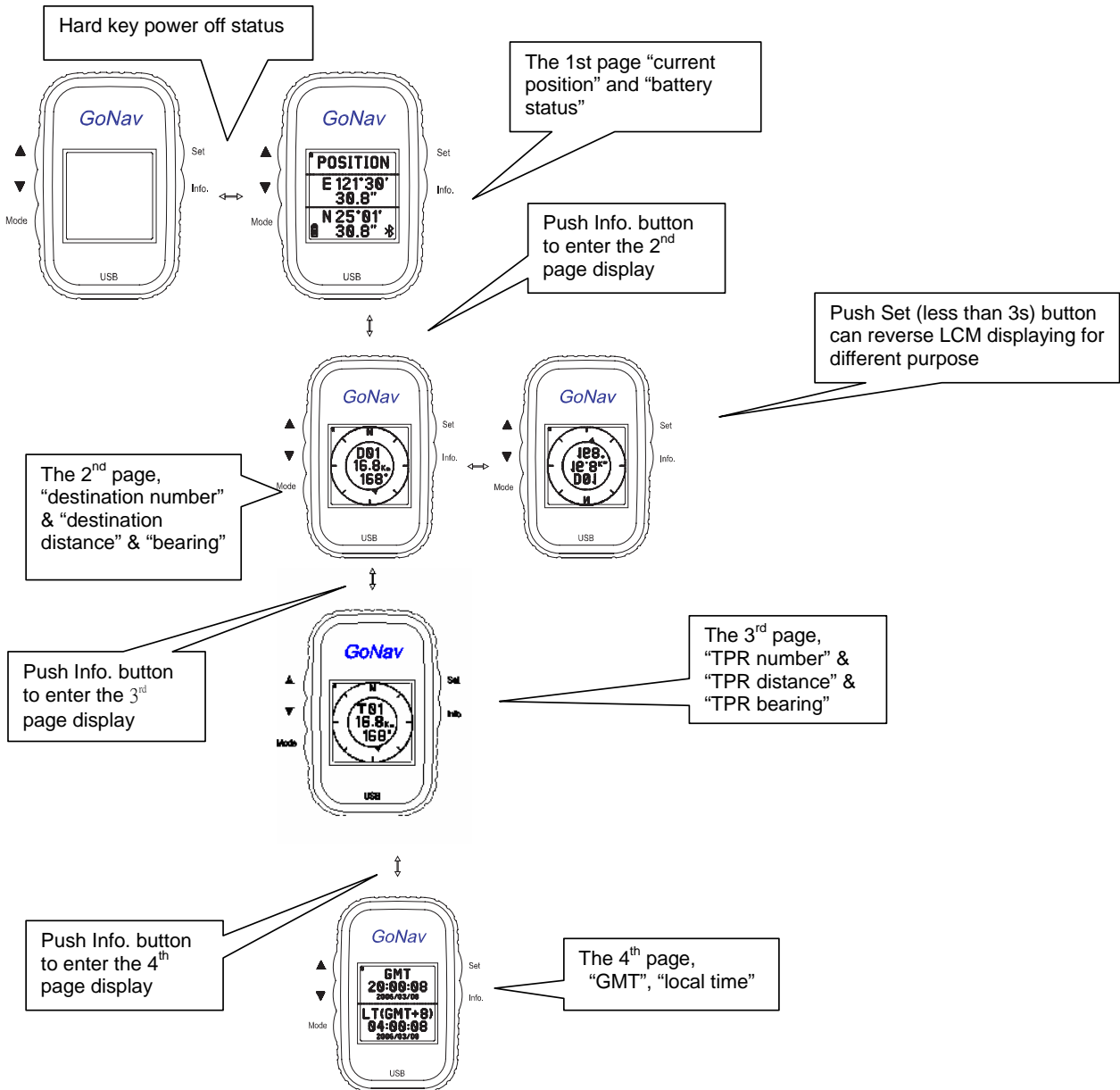
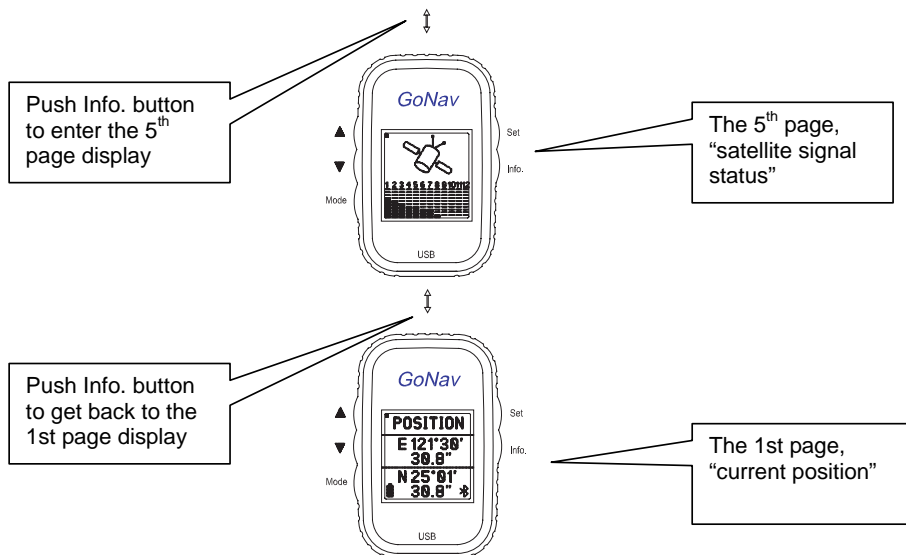


Quick User Guide



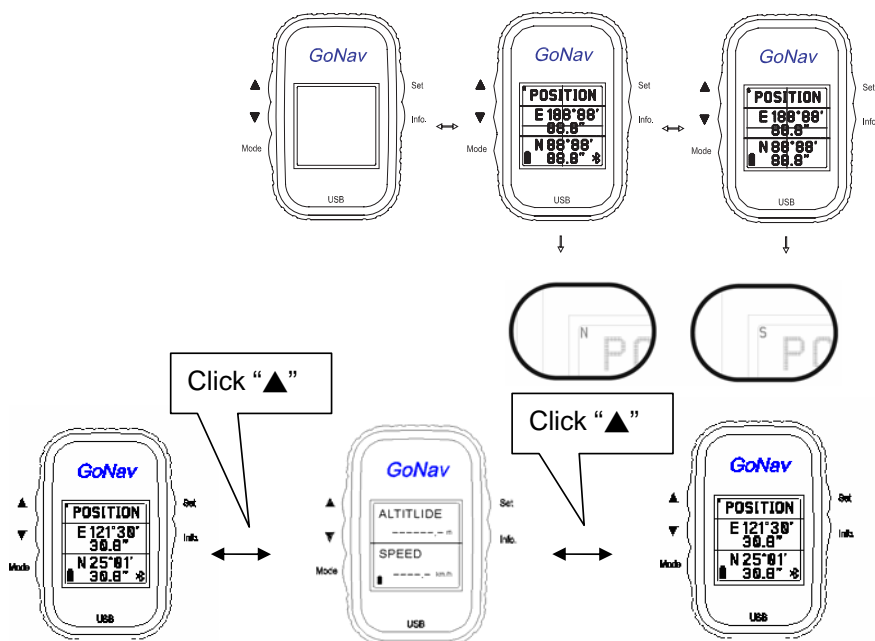
Panel Display





1. Navigation/Sport Mode

Click on "mode" to select Navigation or Sport mode.

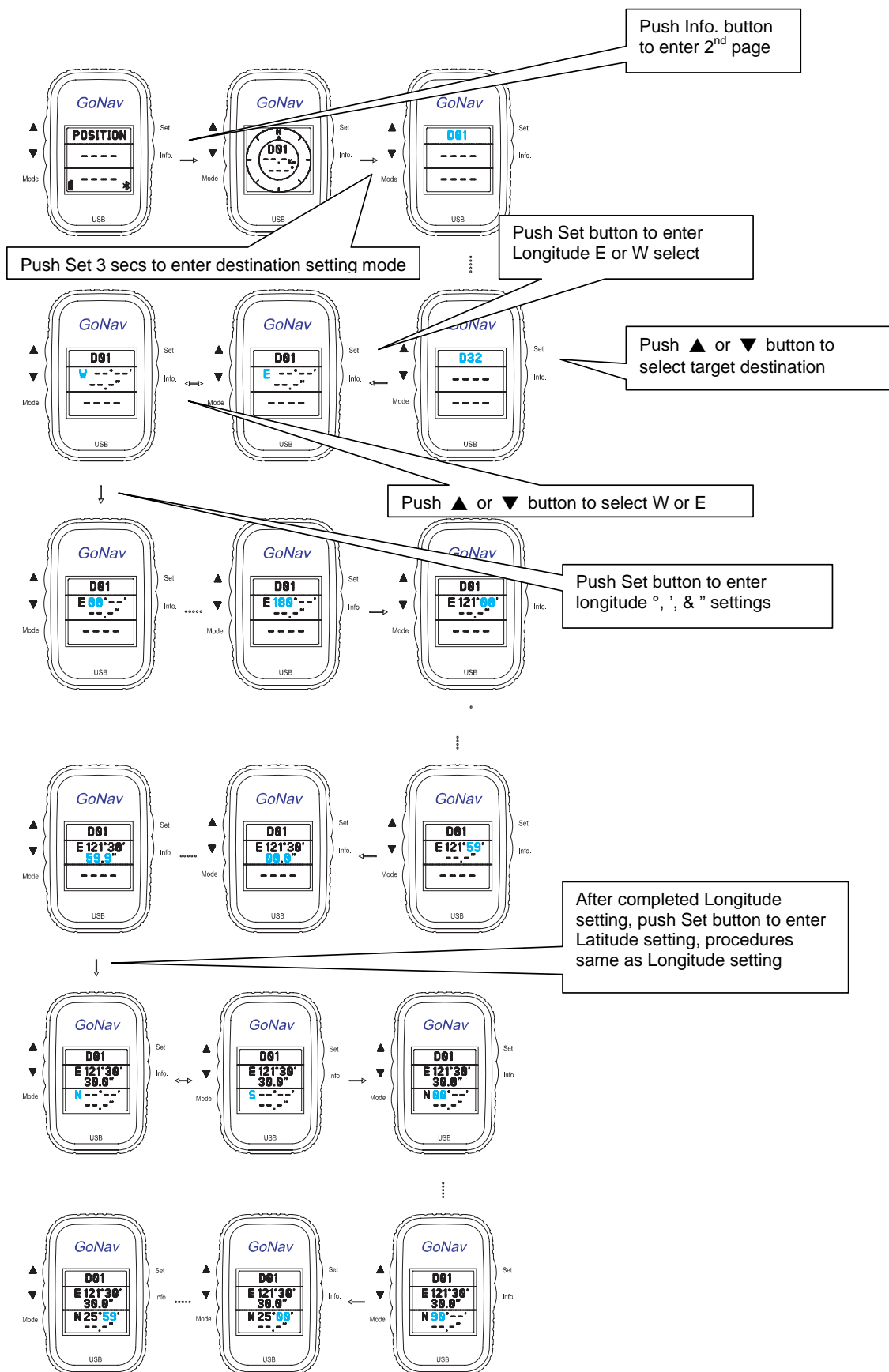


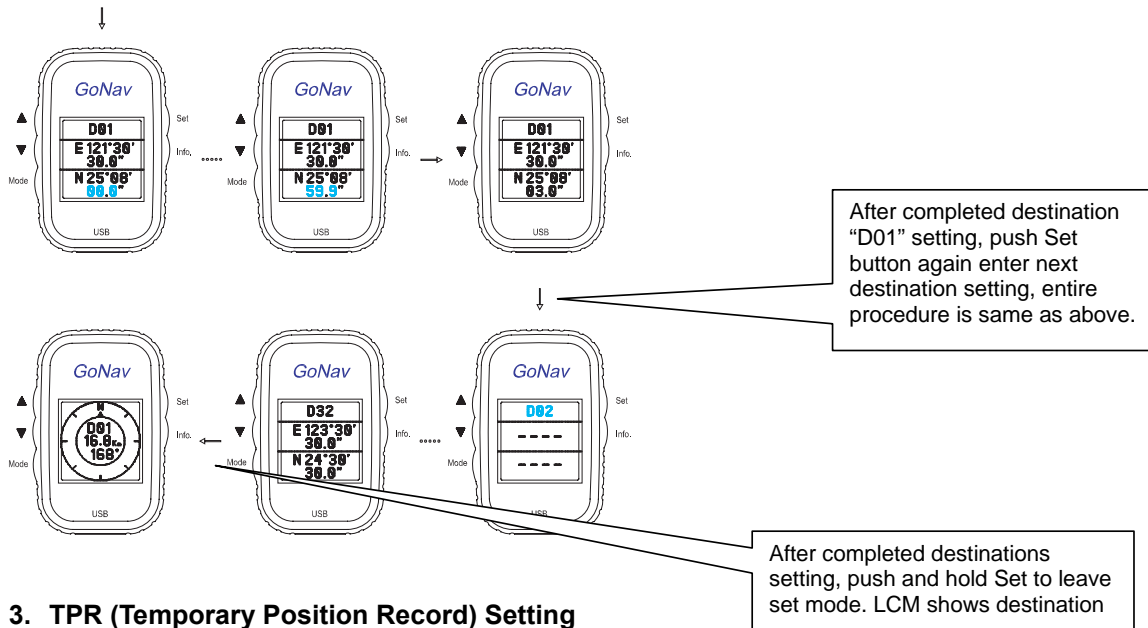
2. Set Destinations

2-1. Find the longitude & latitude of destinations & list on trip plan (up to 32).

2-2. Example of setting procedure: _

格式化: 項目符號及編號

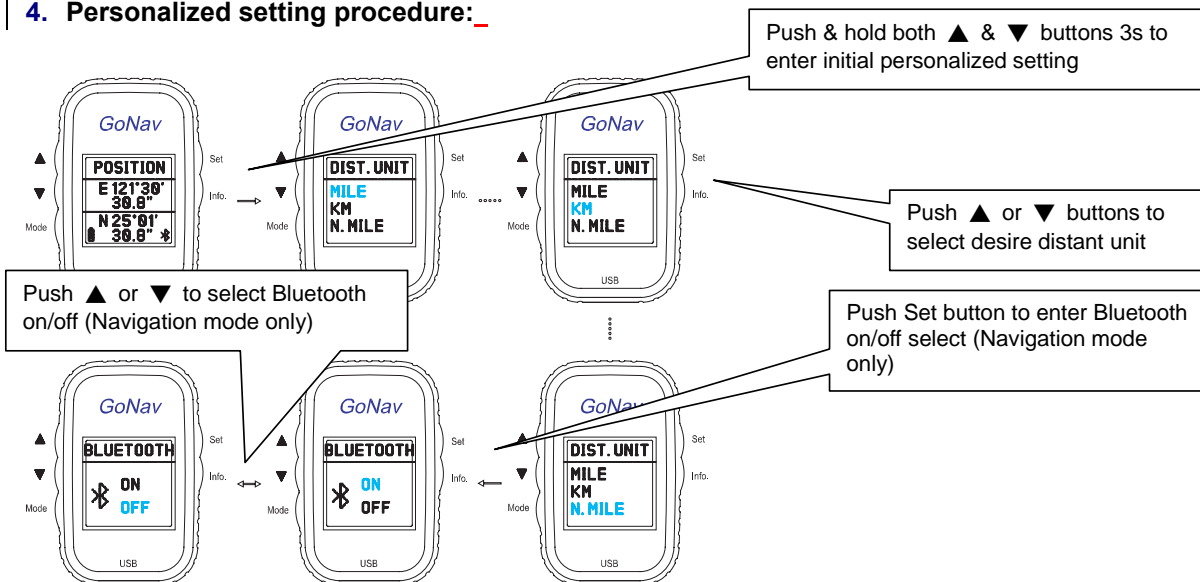


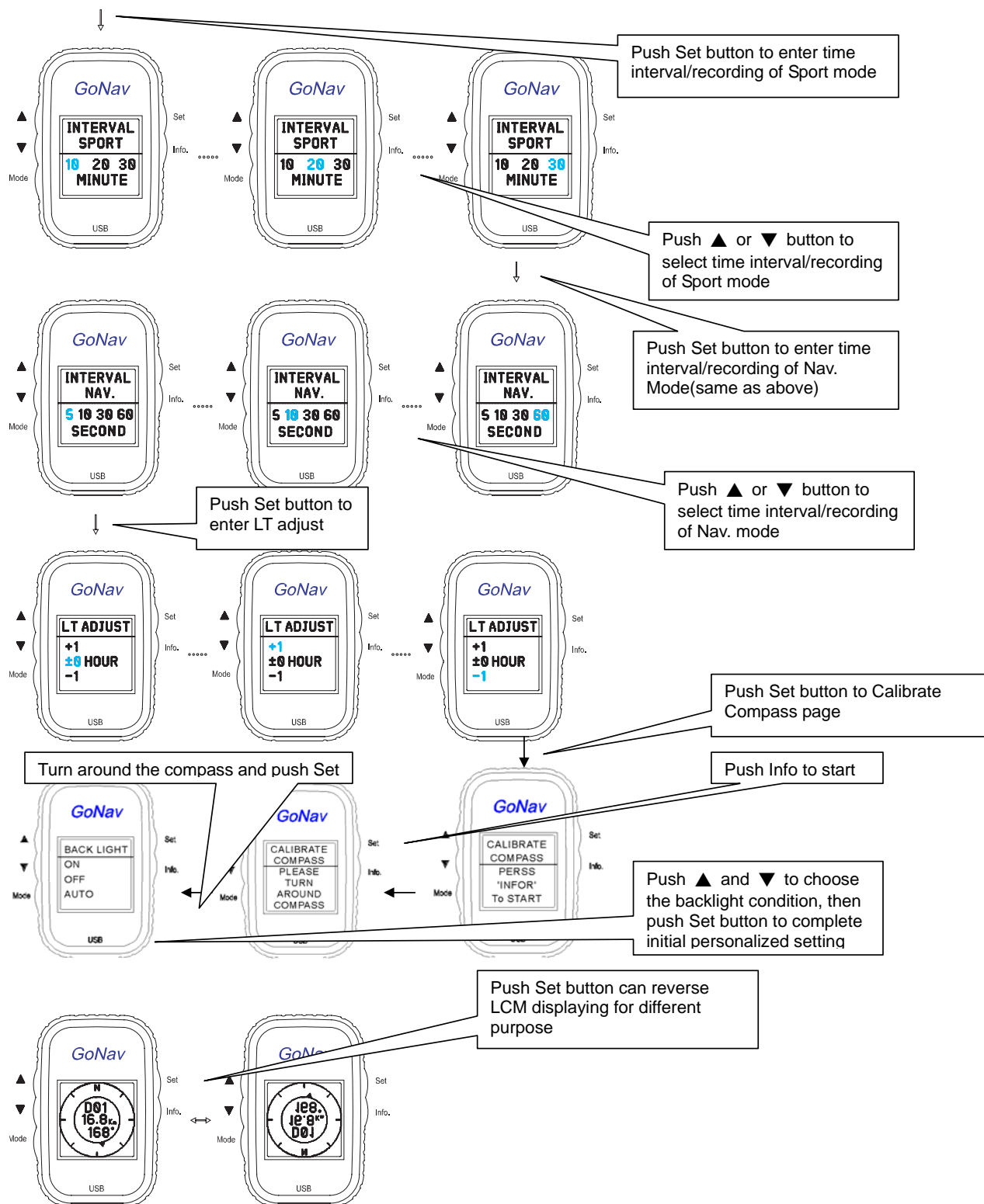


3. TPR (Temporary Position Record) Setting

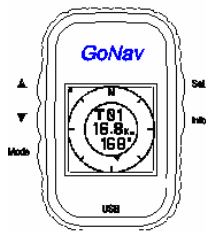
- 3-1. On Position page, after coordinates shown, push and hold "Set" to record as a TPR point. The device can save 60 TPR points.
- 3-2. Connect the device to computer, then open "Supa Sport GPS Compass"
- 3-3. Click "Trace" and then "Read Trace" to load coordinates recorded
- 3-4. Double click any trace to see points, choose a point and click "Google Earth" (installation required) to show the trace on the map. Right click on the house icon to save the point as KML data to import to the destination list.
- 3-5. Only KML file can be imported into Google Earth.

4. Personalized setting procedure:





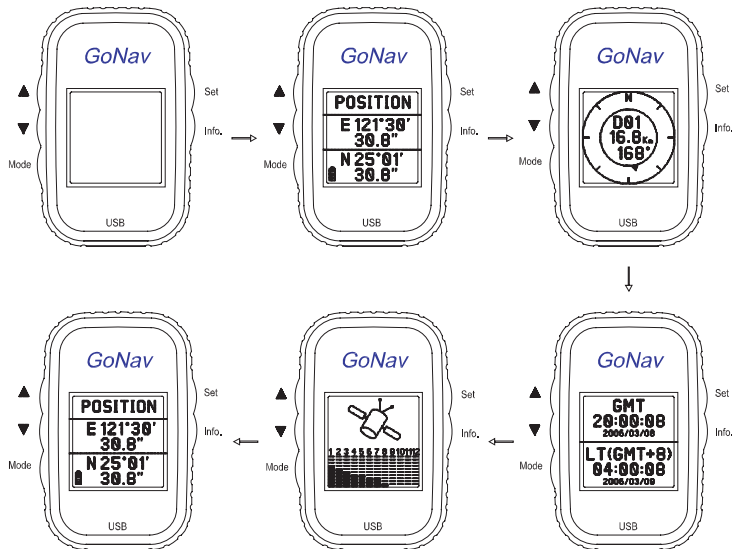
**1-1. Push Info. to enter the 3rd page. This page is TPR (Temporary Position Record).
With connection at the 1st page, push and hold “set” to record the TPR.**



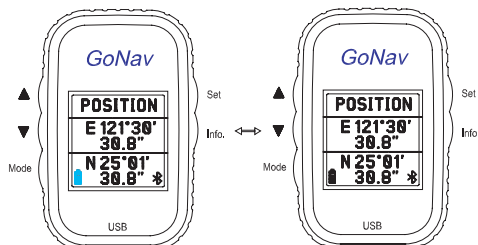
1-2. Push Info. to enter 4th page. This page is GMT (UTC), LT(local time) & date.

1-3. Push Info. to enter 5th page. This page is signal level information of satellites.

1-4. Example of 5 pages' information: (power-off→5 pages→back in 1st page)



Battery Condition



USB Connection

1. When the connection is ok, appears “USB CONNECT” on the GPS receiver and invisible options of application program will show up in computer.
2. When it is under USB Connection mode, GPS receiver's buttons cannot be controlled until the USB cable is plugged out.

Link to Google Earth

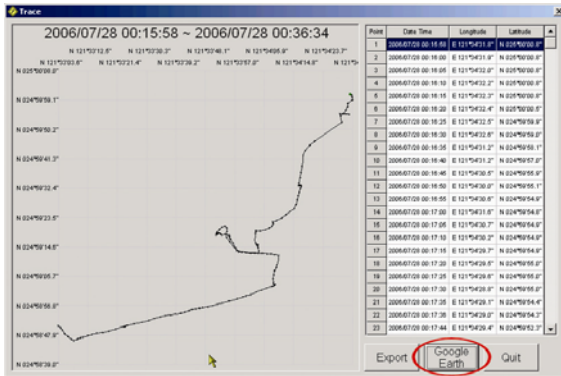
Double clicking the trace line, then trace map, trace points shows, and icons: “Export,”

← 格式化: 項目符號及編號

← 格式化: 項目符號及編號

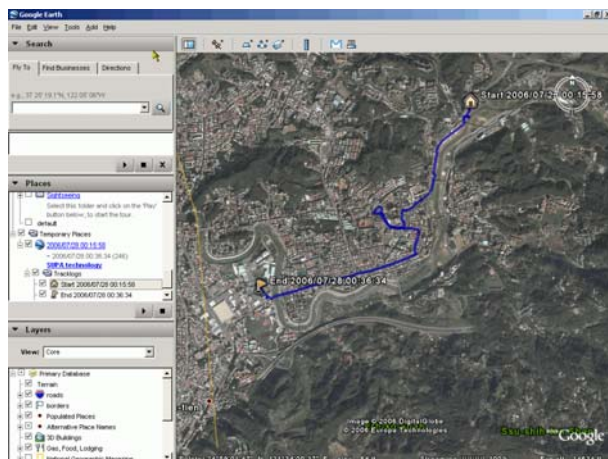
“Google Earth,” and “Quit” in the bottom. Right click the mouse on the trace line; Options of “Export Text,” “Export KML,” and “Launch Google Earth.” will show.

Trace	Start Time	End Time	Point
1	2006/07/28 00:15:58	2006/07/28 00:36:34	246
2	2006/07/27 10:32:34	11:53:59	919
3	2006/07/27 10:04:28	10:14:08	118



1. With Google Earth clicked, Google Earth will be launched automatically.
2. Link to Google Earth from GPS receiver, the trace route in GPS receiver shows in blue color on the satellite map of Google Earth.

格式化: 項目符號及編號



Federal Communications Commission (FCC) Statement

15.21

You are cautioned that changes or modifications not expressly approved by the part responsible for compliance could void the user's authority to operate the equipment.

15.105(b)

This equipment has been tested and found to comply with the limits for a Class B digital device, pursuant to part 15 of the FCC rules. These limits are designed to provide reasonable protection against harmful interference in a residential installation. This equipment generates, uses and can radiate radio frequency energy and, if not installed and used in accordance with the instructions, may cause harmful interference to radio communications. However, there is no guarantee that interference will not occur in a particular installation. If this equipment does cause harmful interference to radio or television reception, which can be determined by turning the equipment off and on, the user is encouraged to try to correct the interference by one or more of the following measures:

- Reorient or relocate the receiving antenna.
- Increase the separation between the equipment and receiver.
- Connect the equipment into an outlet on a circuit different from that to which the receiver is connected.
- Consult the dealer or an experienced radio/TV technician for help.

Operation is subject to the following two conditions:

- 1) this device may not cause interference and
- 2) this device must accept any interference, including interference that may cause undesired operation of the device.

FCC RF Radiation Exposure Statement:

This equipment complies with FCC radiation exposure limits set forth for an uncontrolled environment. End users must follow the specific operating instructions for satisfying RF exposure compliance. This transmitter must not be co-located or operating in conjunction with any other antenna or transmitter.