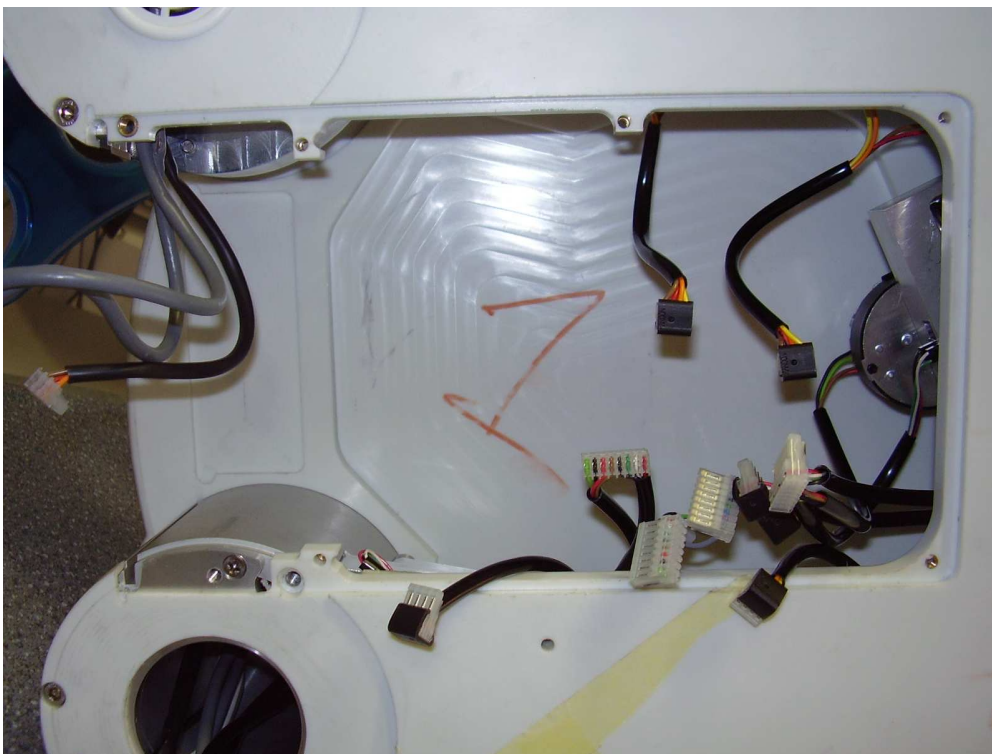


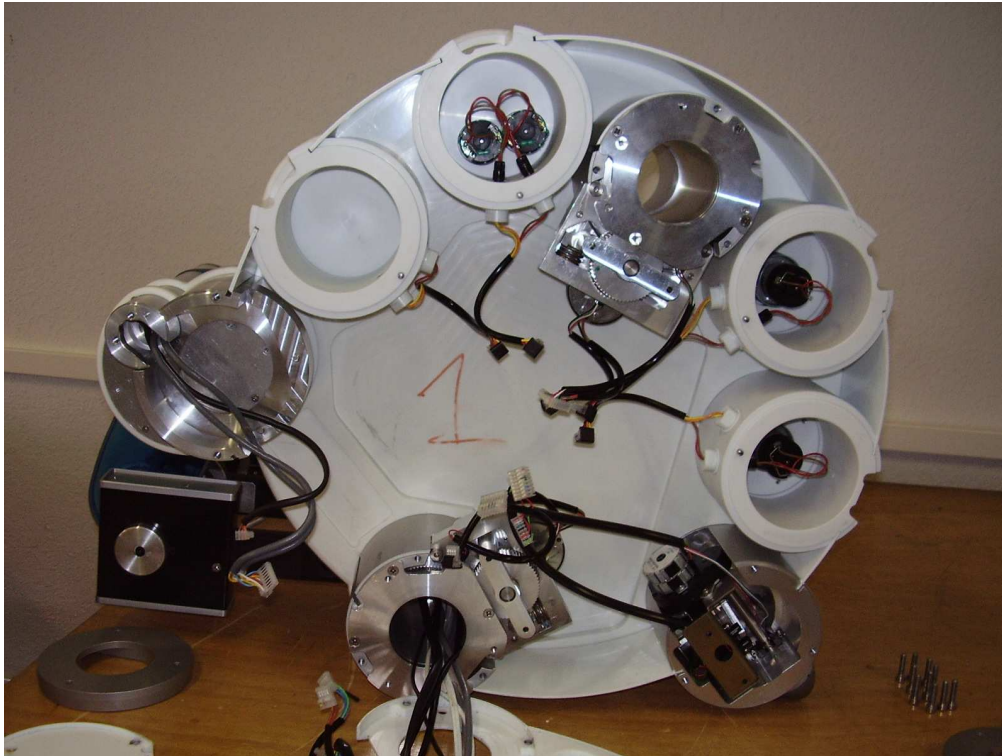
## INTERNAL PHOTOS OF THE TESTED EUT



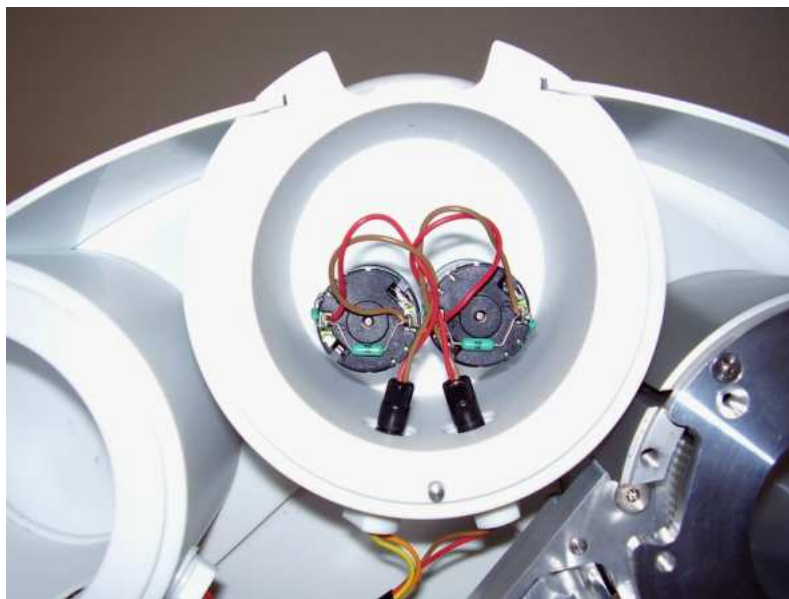
Rear cover removed



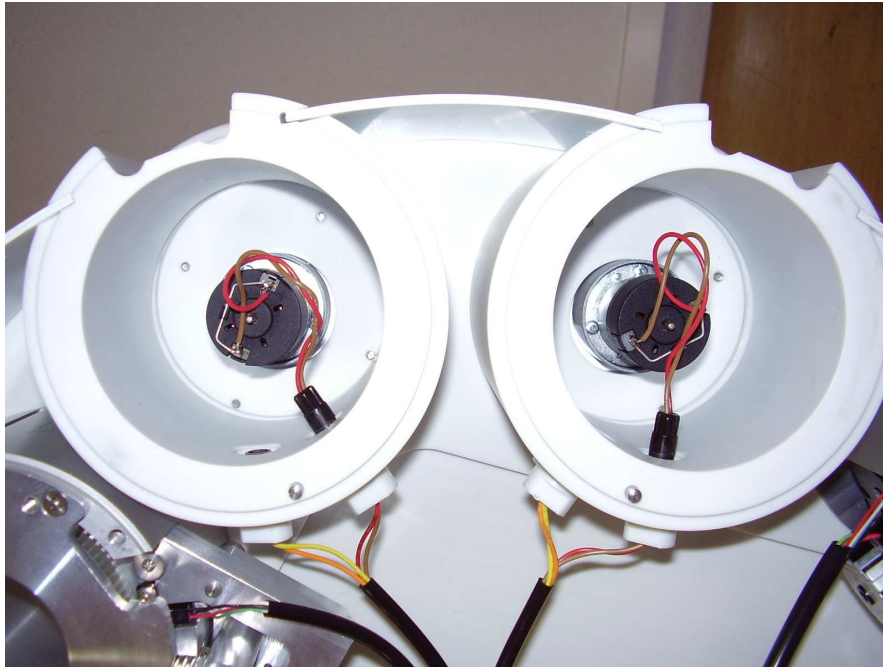
Electronic board removed



Lower cover removed

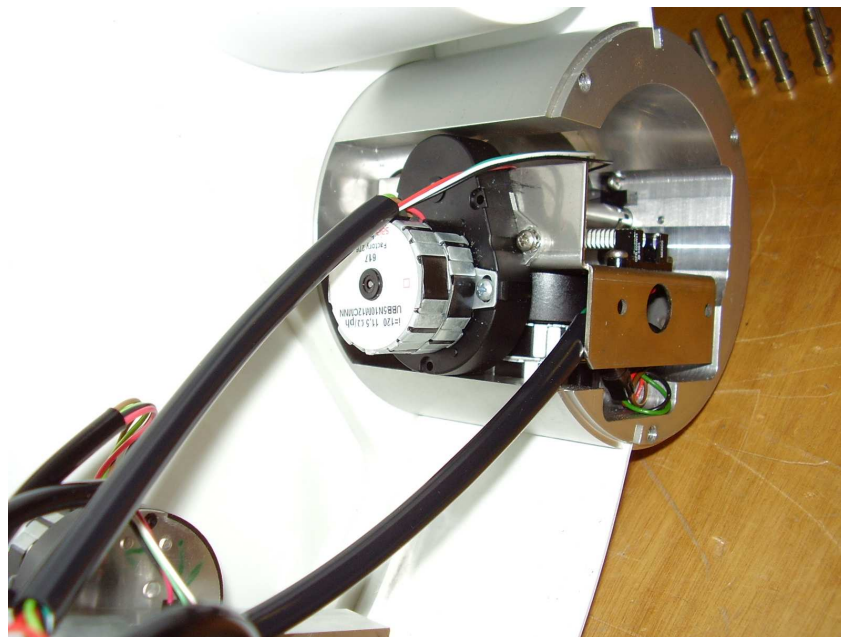
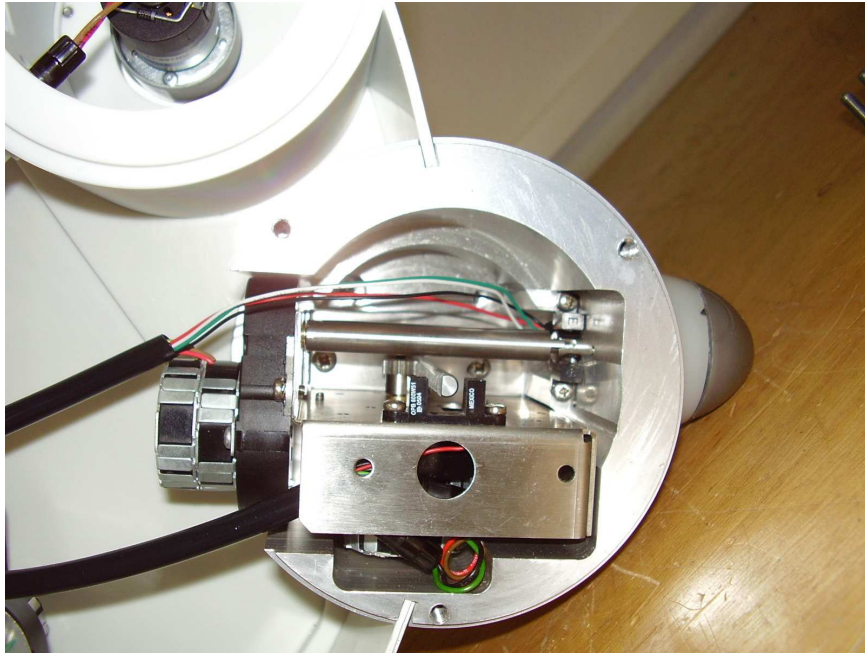


Detail view of motor (Rinse pumps)

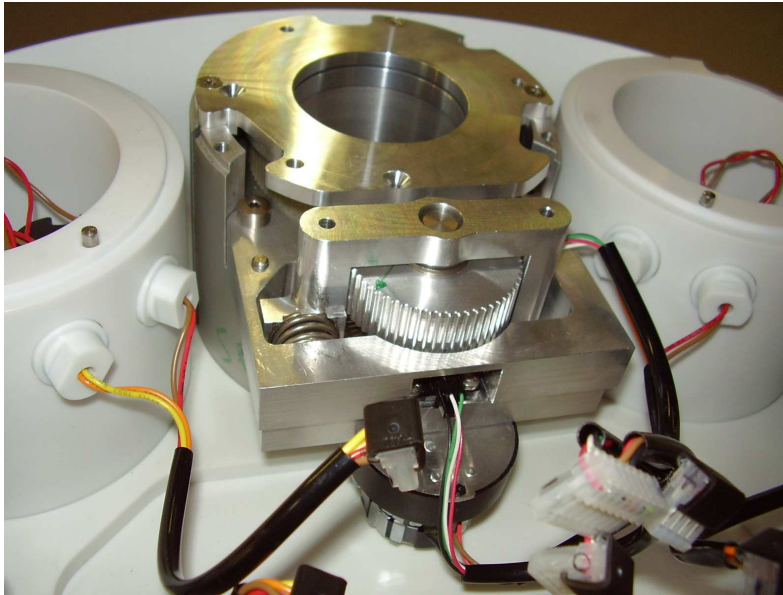


Detail view of motor (pump)

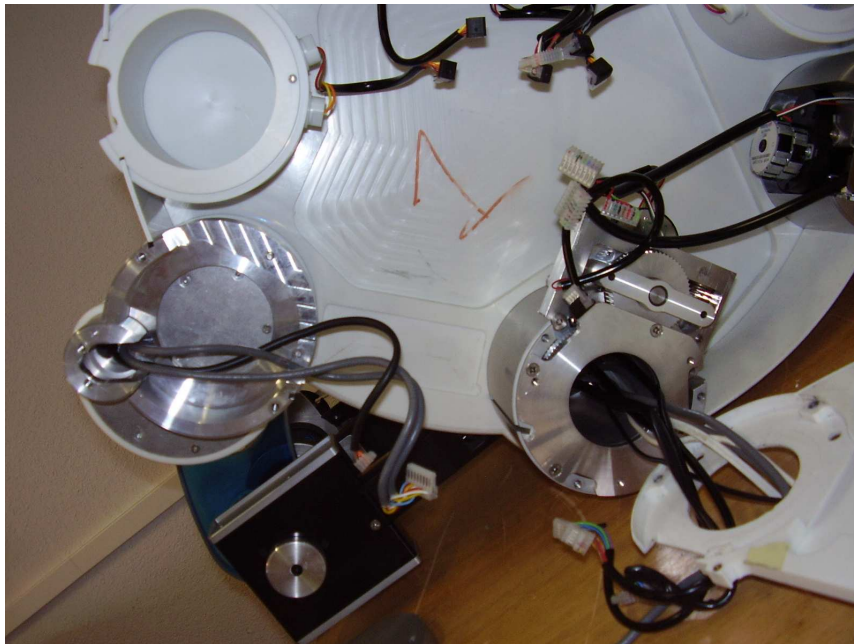


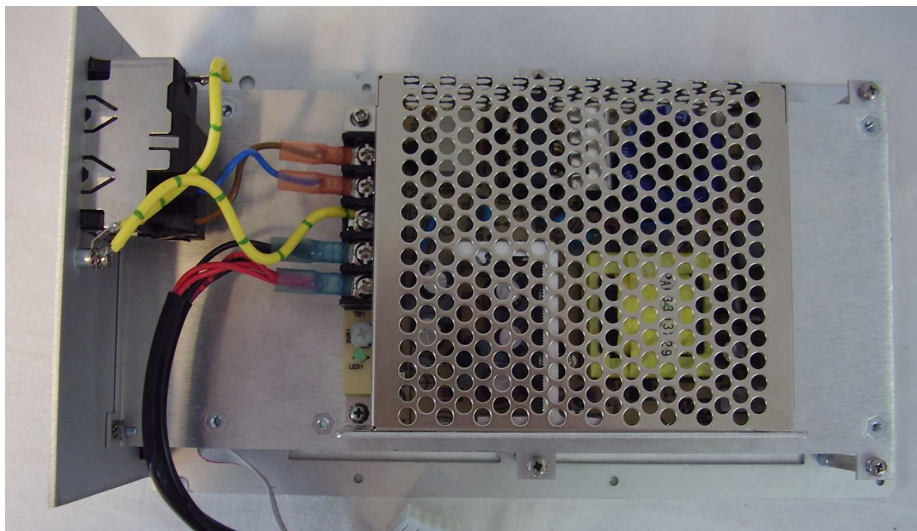
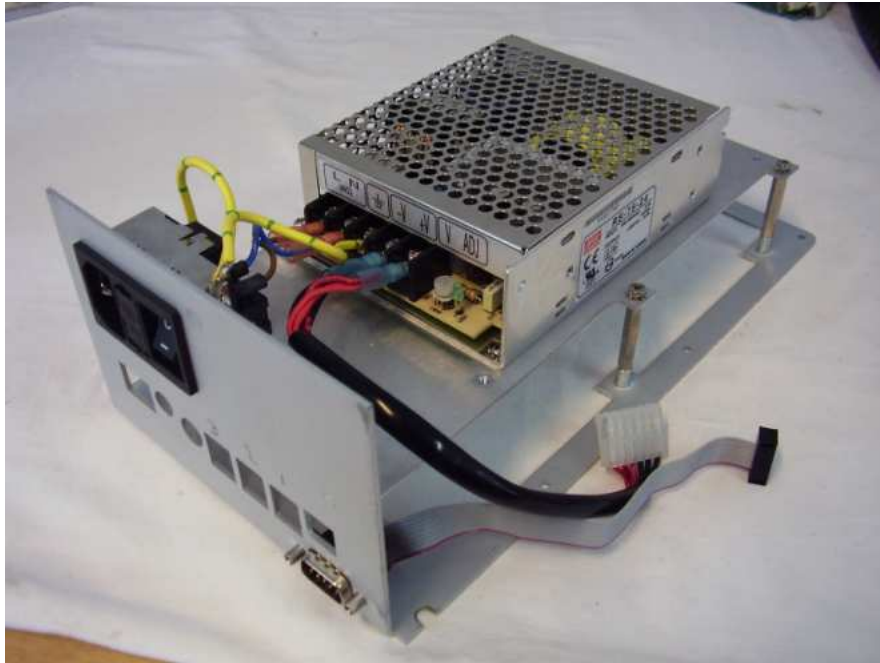


Detail view of axis motor



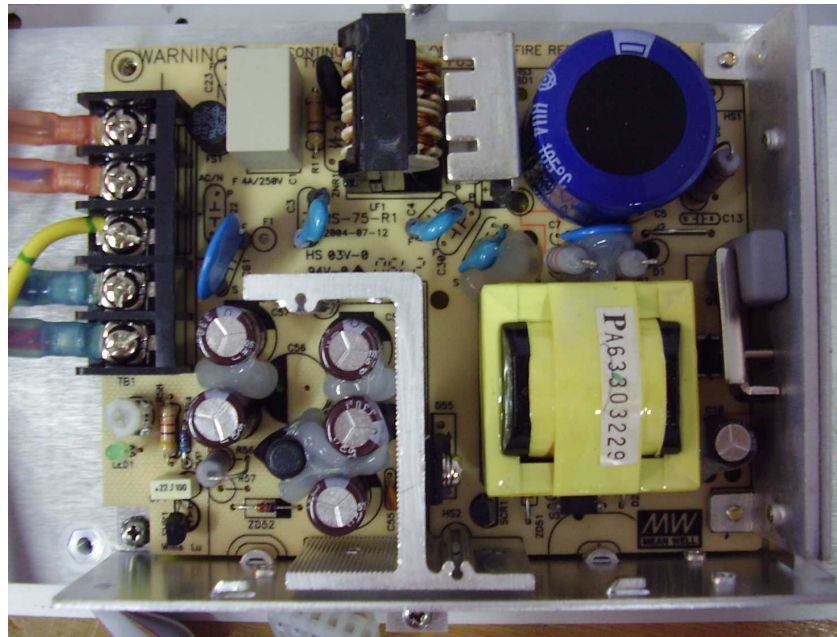
Turntable motor



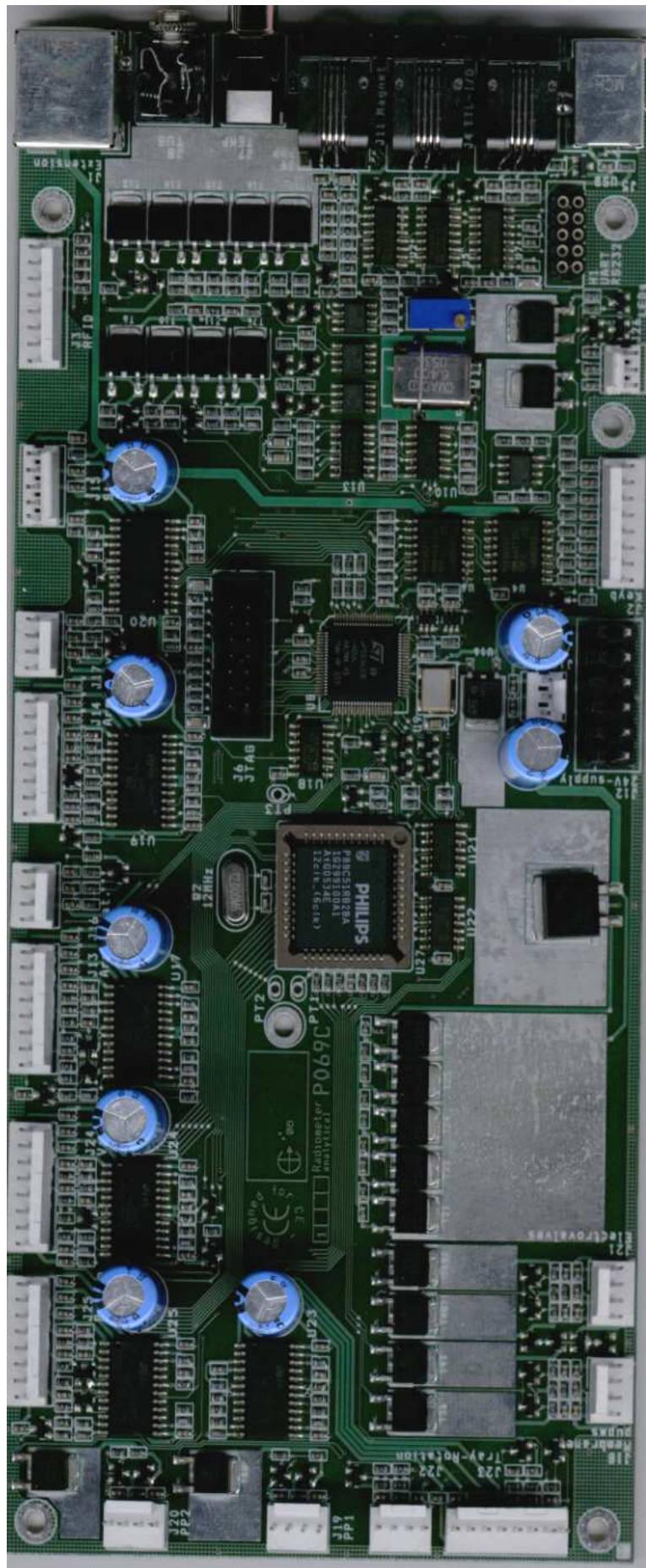


Rear panel with power supply



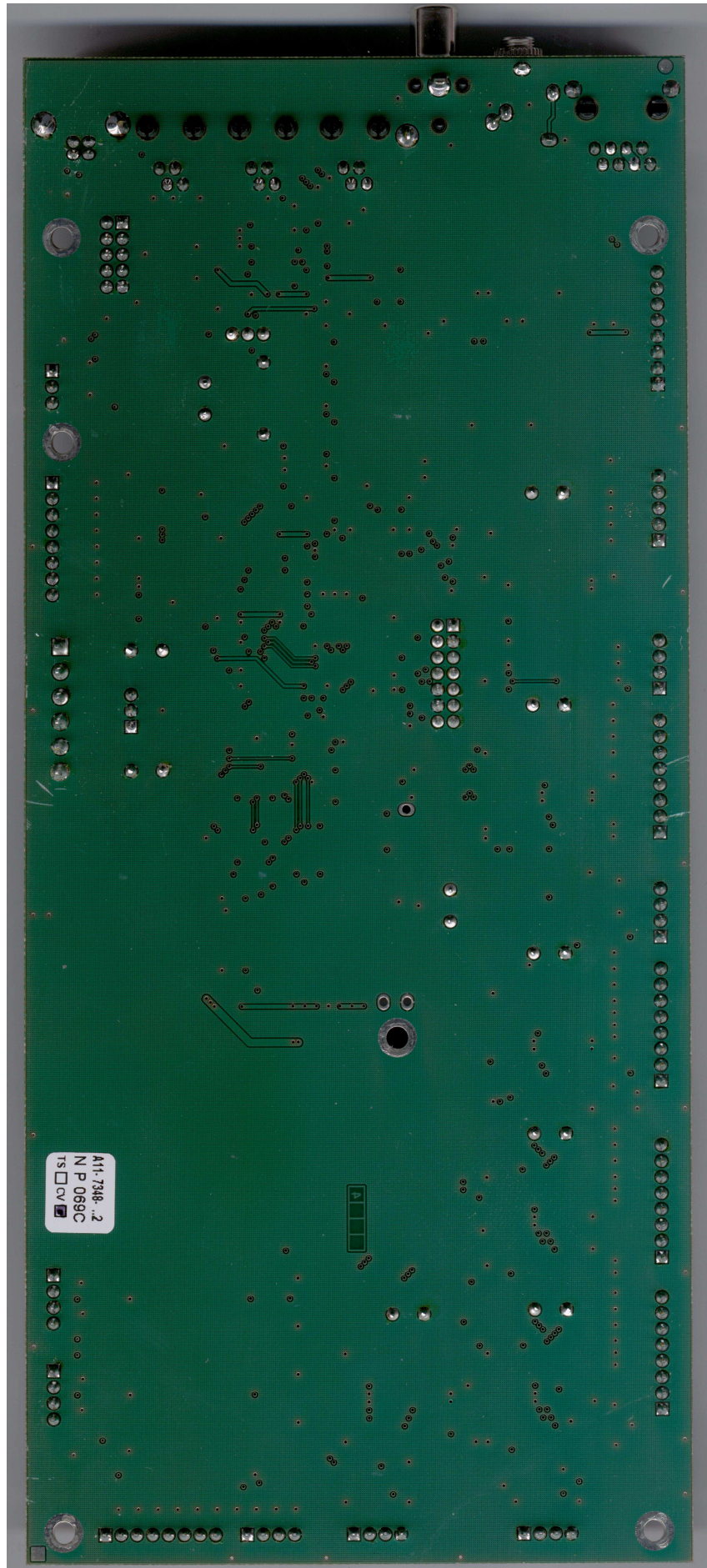


Power supply unit



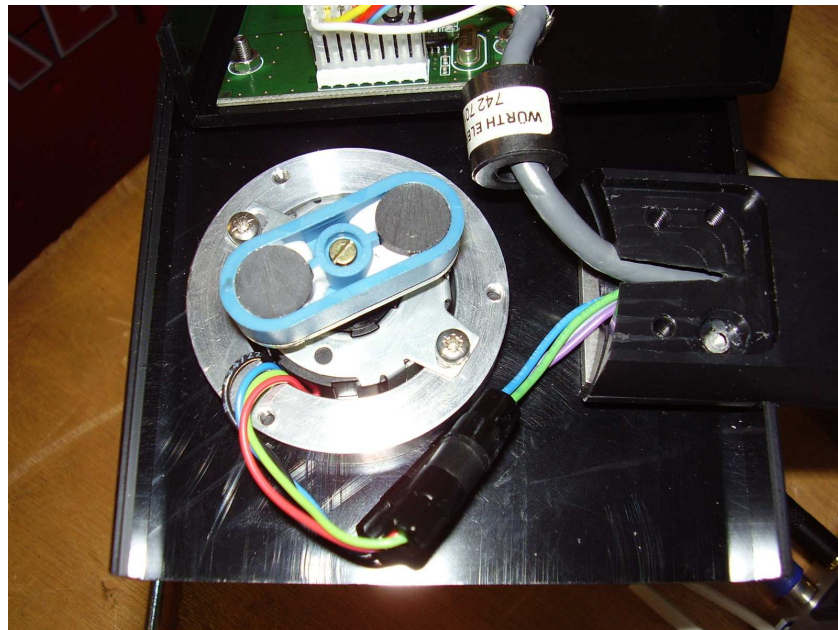
PCB component view





PCB view

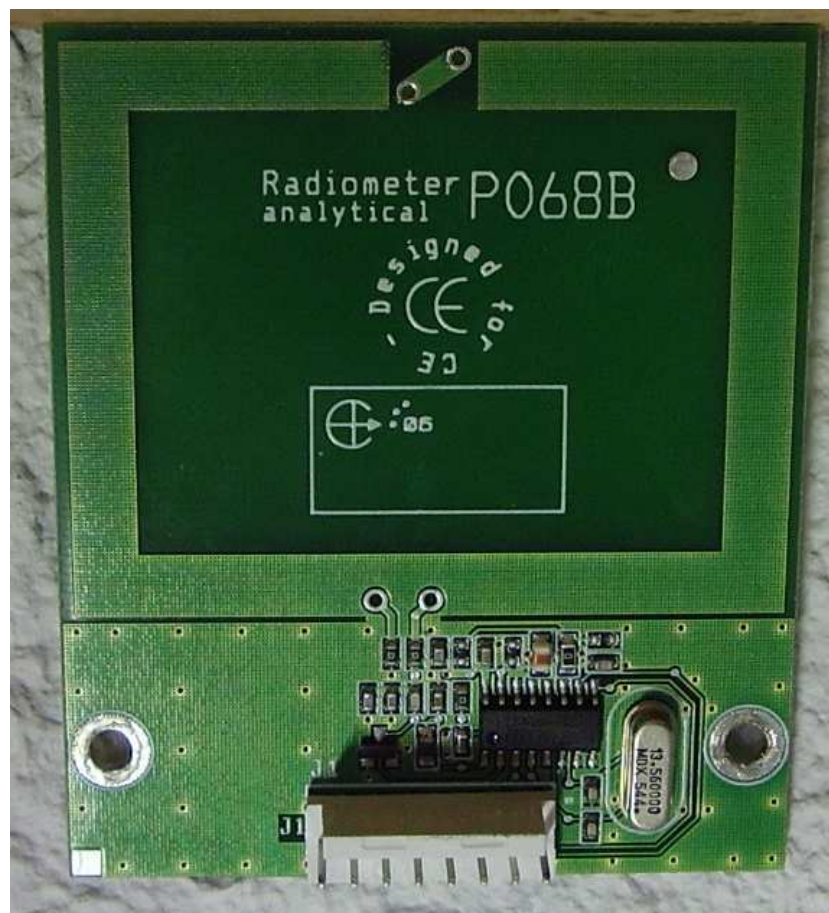
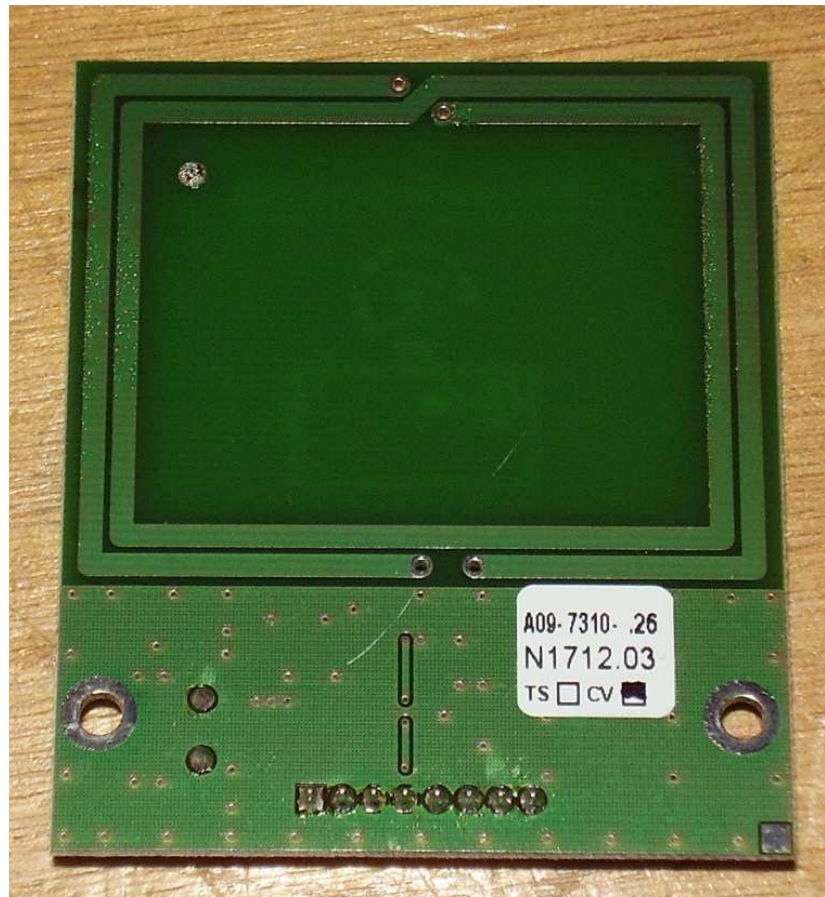




Magnetic stirrer



RFID reader and antenna



RFID reader PCB