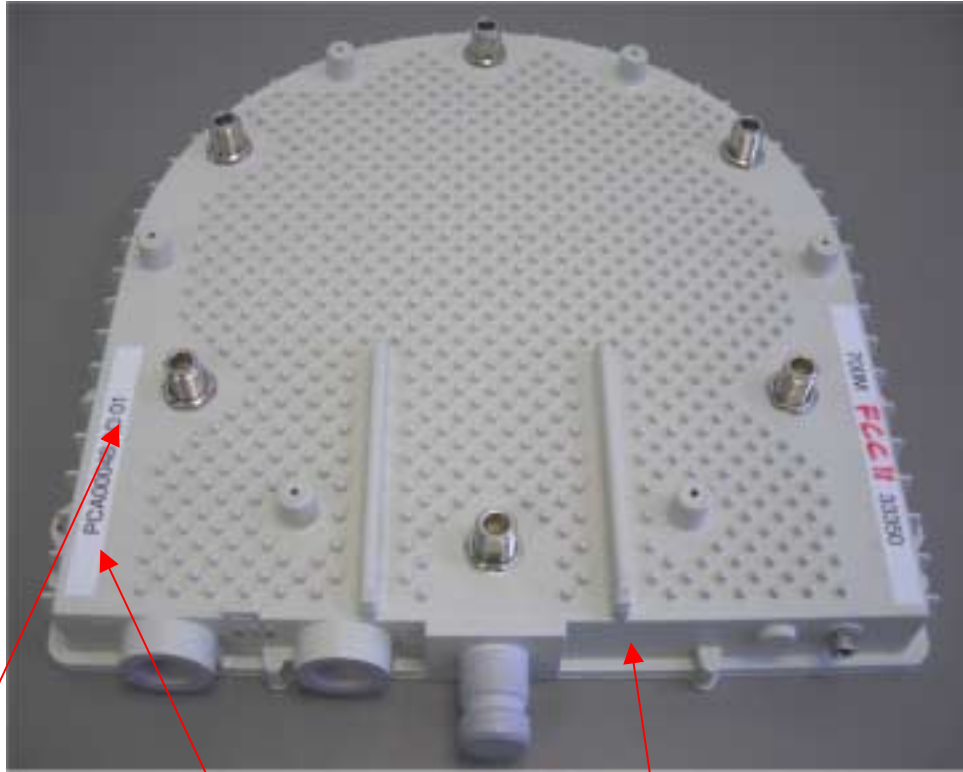


## LABELS


The labels are affixed on the bottom of the base radio unit as shown below.  
The label material is PVC with a permanent adhesive.



A label with P/N will be located here



A label with FCC ID:UGM-WBS700L-1 will be located here.

A label with FCC statement will be located here

**WAVION**

Type 4  
enclosure

Model :WBS-700L  
POE Input: 55VDC

WARNING:  
Consult the installation  
Guide before applying  
power

FCC ID :UGM-WBS700L-1

**Product :WBS-700L-AAA-DDD**  
**P/N: 10706ASD**  
**S/N :YYWWMMMMCCCC**  
**MAC: ##.##.##.##.##.##**  
**PKGXXXXX-XX                      NN.LL**

This device complies with part 15 of the FCC Rules. Operation is subject to the following two conditions:  
(1) This device may not cause harmful interference, and  
(2) this device must accept any interference received, including interference that may cause undesired operation.