

THANK YOU

Thank you for purchasing the GA-6205 PANTERA II 5-Button Wireless Optical Mini Mouse. This manual will provide you with what you will need to know about your new mouse.

THIS PACKAGE INCLUDES

- One GA-6205 PANTERA II 5-Button Wireless Optical Mini Mouse
- One USB Storable Receiver
- User Guide
- 1 AA Alkaline Battery



MANUAL CONTENTS

Features	3
Overview	3
Installation/Trouble Shooting	4/5
Battery Indicator	5
Receiver Storage/Turn Mouse On-Off	6
Center Scroll Function	6
Important	7
Technical Specifications	7
FCC Compliance Statement	8
Product Registration	9
1 Year Limited Warranty	9
Tech Support	10

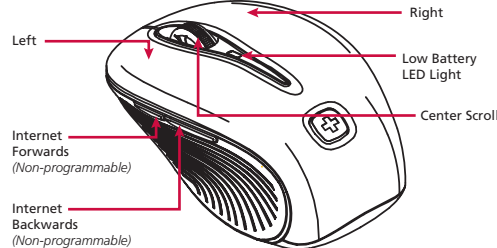
FEATURES

- PC - MAC USB Compatible
- Range 27 MHz Wireless Connection
- Low Battery Indicator
- 1 AA Alkaline Battery
- Mini 27 MHz USB receiver
- 5 Function Buttons
 1. Left, 2. Right, 3. Center Scroll, 4. Internet Backward, 5. Internet Forward
- Ergonomic design (universal left and right handed)
- Compatible with USB V1.1 low-speed & USB 2.0 High Speed protocol

OVERVIEW

This GA-6205 PANTERA II 5-BUTTON Wireless Optical Mini Mouse is the latest in optical mouse technology. Its high resolution is 800 DPI that provides the smoothest and most accurate tracking possible. Please read this manual thoroughly and follow the instruction procedures to prevent any damage to the mouse and any harm to yourself.

Functions:



INSTALLATION

Battery Installation:

1. Remove the battery compartment cover. **(1)**
2. Install battery with the positive (+) & negative (-) in the correct direction indicated by the battery compartment label. **(2)**
3. Replace battery compartment cover. Turn on mouse. The red LED on the bottom of the mouse **(3)** will indicate power to the mouse. *(CAUTION: Do not point red Optical LED into your eyes or look directly into the optical emitter. Keep away from young children.)* **Note: Turn mouse on first.**

Connecting the Mouse to the Receiver:

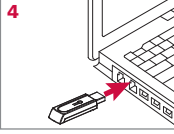
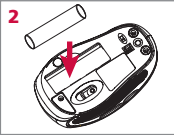
Plug in the USB Receiver to any available USB port or hub connected to your computer. **(4)** *(Windows will now detect the mouse and install the required drivers automatically and the light on the receiver will blink when in use.)*

YOUR MOUSE IS NOW READY TO BE USED!

TROUBLESHOOTING

Synchronization:

Windows should have installed the drivers, recognizing the mouse. If not, mouse may be in sleep mode. Click any button once to wake it up. If this does not work, **Changing Wireless Connection Channel** or a **Manual Re-Connect Mouse to Receiver** may be needed.

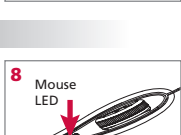
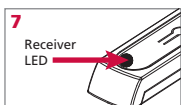


PC & Mac Manual Re-Connect Mouse to Receiver - Changing the Wireless Connection Channel:

Note: Turn mouse on first.

1. Plug in USB Receiver. **(4)**
 2. While USB receiver is plugged in, press button on the top of the receiver. **(5)**
 3. Click mouse "CONNECT" button once on bottom of mouse within 5 seconds after clicking the "CONNECT" button on the receiver. **(6)**
- Note: Click the receiver's button FIRST, then click the mouse bottom button!**
4. Receiver LED will start blinking **(7)**, when connection is established.
 5. Move the mouse around to test if successful.
 6. If the synchronization is not successful:
 - a. Remove batteries and unplug receiver
 - b. Wait 20 seconds and try steps 1 to 5 again.

If mouse still won't work, re-start computer and follow above instructions.



BATTERY INDICATOR

Note: To conserve battery power, turn mouse off. When battery voltage level goes under the preset level, battery indicator LED on top of the mouse **(8)** will flash at least three times when moving or clicking the mouse. Mouse will continue to operate for a period, but batteries should be replaced immediately.

RECEIVER STORAGE/ TURN MOUSE ON-OFF

For travel and loss prevention, store receiver in cavity on the bottom of the mouse.

Storing receiver :

To store in the mouse bottom **(9)**, place USB plug end of receiver into place then (A) slide receiver into position with logo facing outwards. Receiver will now be locked into position.

Removing Receiver:

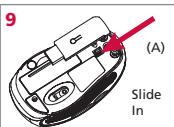
Using the tip of your finger, slide receiver out **(10)** and remove from cavity. The USB is now active and ready to be inserted into your computer's USB port.

Turn Mouse On-Off:

With the switch in the "ON" position, the LED light will light up. Light will turn off when switched off.

CENTER SCROLL FUNCTION

1. Move the scroll wheel **(11)** up to scroll up, and down to scroll down.
2. Press scroll wheel down until it clicks and scroll icon appears on the application screen. **(12)** This will temporarily place the mouse cursor into scroll mode.
3. Move the mouse to scroll up, down, left or right depending on the application function. Press scroll wheel down again to exit scroll mode.



IMPORTANT

1. For optimal performance, mouse should be no more than 3 ft. from receiver.
2. Due to orientation of USB ports on your notebook or hub, the combined connect button/status light may not be in view.
3. When Receiver is stored in bottom of the mouse, it automatically shuts off to save battery power. If the mouse is not moved, it will go into sleep mode. Mouse will wake when moved or button clicked.
4. Optical sensors are rated for most surfaces. Avoid using the mouse on a reflective or mirrored surface as this might cause the mouse to function poorly or not at all.
5. Before boarding an aircraft, remove batteries from the mouse or store the receiver in bottom of mouse (turning it off). The mouse can transmit radio frequency energy when it is activated.
6. The scrolling wheel/3rd button only works with the operating systems listed. If it is used with operating systems not listed, enhanced functions and features as a five-button mouse will be lost.
7. The 4th and 5th buttons are not programmable.
8. Note for Mac Users: This mouse does not have software for Mac mouse driver. You will not be able to use all of the features which include: Enable or disable scrolling, assign primary and secondary buttons, activate Exposé, display Dashboard, open Spotlight, enable screen zoom, switch applications, and open applications.

TECHNICAL SPECIFICATIONS

5-BUTTON Optical Mini Mouse
Storable USB Receiver
Standards: USB 1.1 and 2.0 Specification compatibility
Wireless Specification: 27 MHz
Operating Systems: MS Windows 98/SE/ME, 2000, XP, Vista, MAC OS X & above
Receiver Power: USB Per-Port Current: Self-Power 500mA
Mouse Power: 1 AA Alkaline Battery
Dimension: (LxWxH): 91mm x 49mm x 30mm
Weight: 1.7 oz.
Operation Temperature: 0°C ~ 40°C
Humidity: 5-90% RH non-condensing

FCC COMPLIANCE STATEMENT

This equipment has been tested and found to comply with the limits for a Class B digital device, pursuant to Part 15 of the FCC Rules. These limits are designed to provide reasonable protection against harmful interference in a residential installation. This equipment generates, uses and can radiate radio frequency energy and, if not installed or used in accordance with the instructions, may cause harmful interference to radio communications. However, there is no guarantee that interference will not occur in television reception, which can be determined by turning the equipment off and on. The user is encouraged to try and correct the interference by one or more of the following measures:

- (1) Reorient or relocate the receiving antenna.
- (2) Increase the separation between the equipment and the receiver.
- (3) Connect the equipment into an outlet on a circuit different from that to which the receiver is connected.
- (4) Consult the dealer or an experienced technician for help.



Tested To Comply With FCC Standards
FOR HOME OR OFFICE USE

This device complies with Part 15 of the FCC Rules. Operation is subject to the following two conditions:
(1) This device may not cause harmful interference, and
(2) this device must accept any interference received, including interference that may cause undesired operation.

Caution:
This manufacturer is not responsible for any radio or TV interference caused by unauthorized modifications to this equipment. Such modifications could void the user authority to operate the equipment.

REGISTRATION & WARRANTY

PRODUCT REGISTRATION

Avenues suggests you register your SWISSGEAR accessory shortly after your purchase. To register your SWISSGEAR accessory, please go to:

<http://www.AvenuesUSA.com/registration>

LIMITED WARRANTY:

This product is warranted to be free from manufacturing defects for a period of 1 year from the original date of consumer purchase. This warranty is limited to the repair or replacement of this product only and does not extend to consequential or incidental damage to other products that may be used with this unit. This warranty is in lieu of all other warranties expressed or implied. Some states do not allow limitations on how long an implied warranty lasts or permit the exclusion or limitation of incidental or consequential damages, so the above limitations may not apply to you. This warranty gives you specific rights, and you may also have other rights which vary from state to state. If unit should prove defective within the warranty period, contact us with your proof of purchase/date at the following:

SWISSGEAR Products, c/o AVENUES IN LEATHER
750 Hope Road, Tinton Falls, NJ 07724

or call toll free: 1-877-SWS-GEAR (797-4327)
www.WengerNA.com contactus@AvenuesUSA.com

©2007 Avenues In Leather, Inc. Avenues is an authorized licensee of Wenger Licensing. Avenues/Wenger are not responsible for technical or editorial errors or omissions contained herein. The information contained herein is subject to change without notice. Only warranties for SWISSGEAR products are set forth in accompanying warranty statements.



SWISSGEAR
BY WENGER

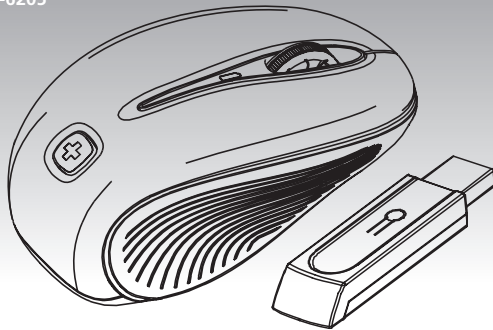
FROM THE MAKER OF THE GENUINE SWISS ARMY KNIFE™

For technical assistance please dial:
1-877-750-TECH

Or email us at:
TechSupport@AvenuesUSA.com

USER GUIDE

The PANTERA II
5-Button
Wireless Optical
Mini Mouse
GA-6205



SWISSGEAR
BY WENGER

FROM THE MAKER OF THE GENUINE SWISS ARMY KNIFE™