

SRS-FW400: internal pictures



Fig. 1: Internal view of the antenna once the top cover has been unscrewed and lifted

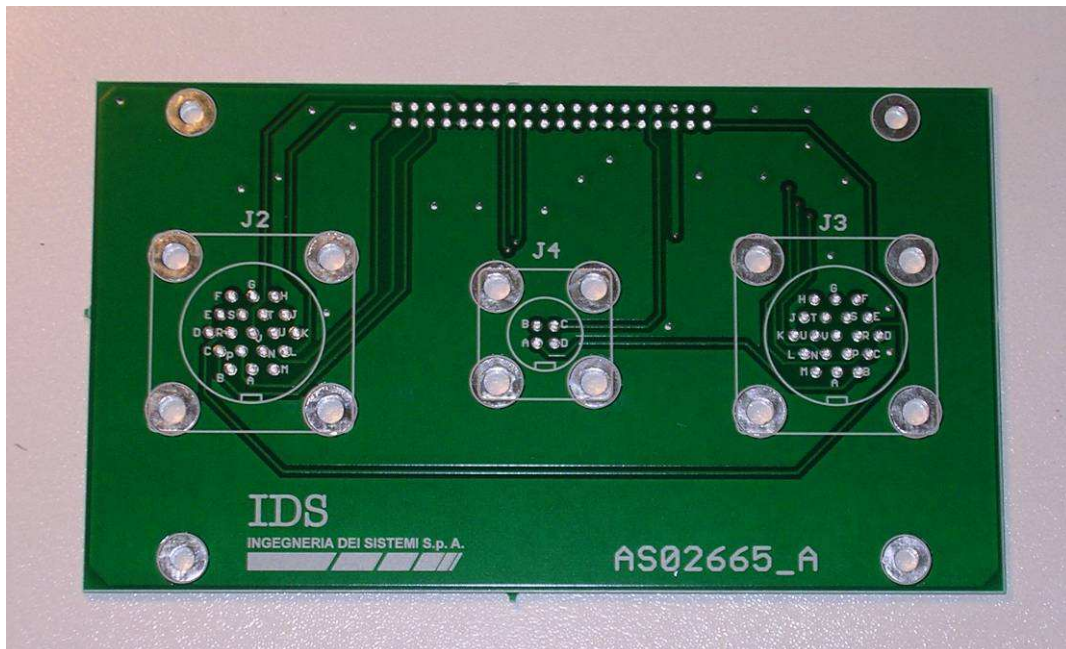


Fig. 2: Antenna connector board (top side)

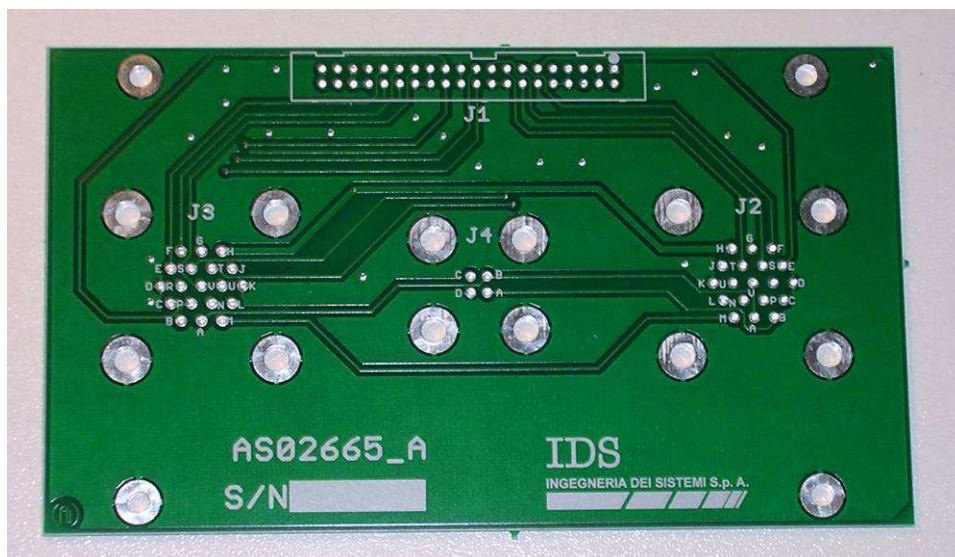


Fig. 3: Antenna connector board (back side)



Fig. 4: Internal view of the antenna once the top cover has been removed: top side

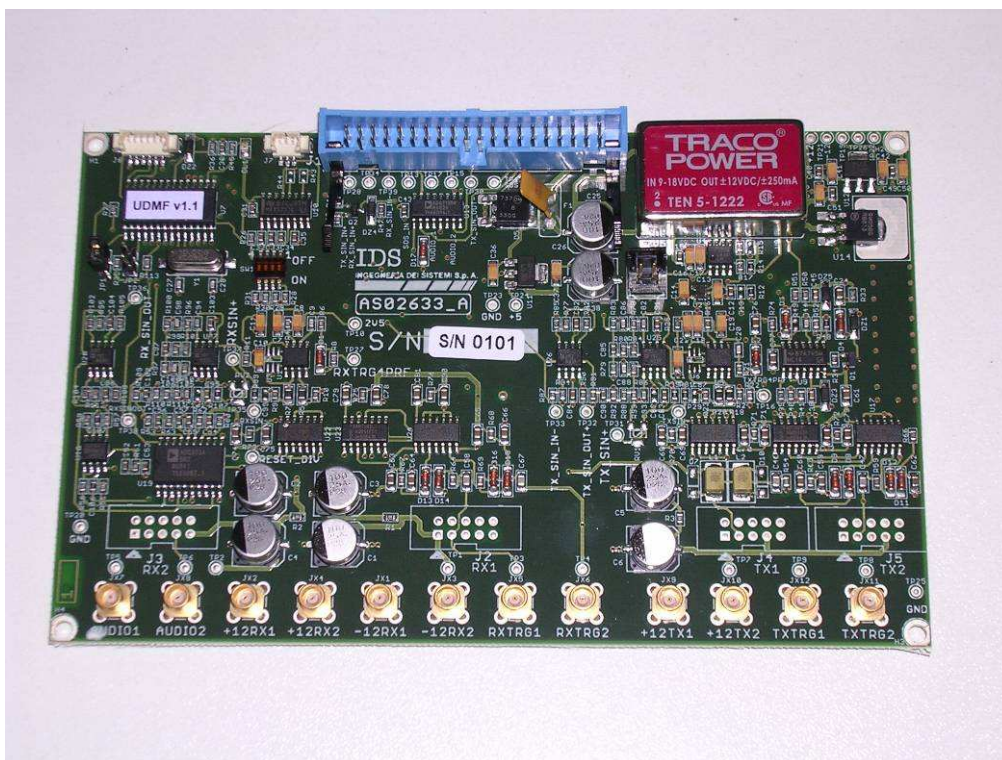


Fig. 5: Antenna multiplexer board (top side)

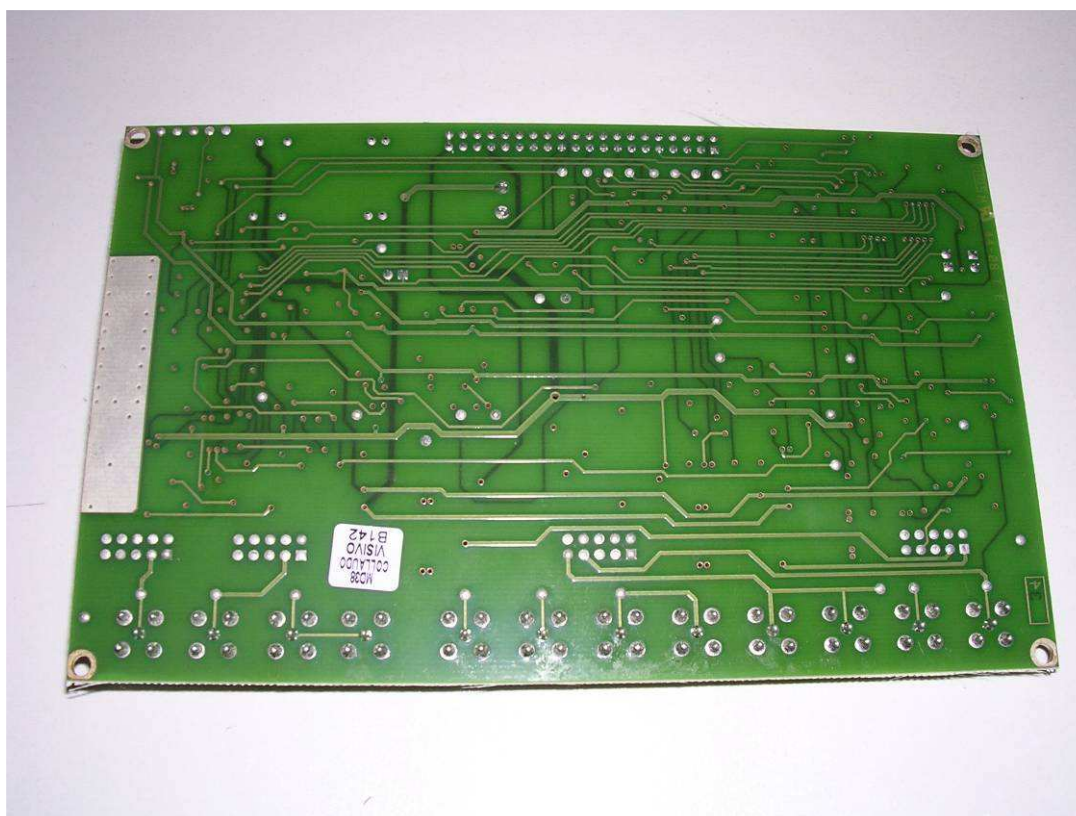


Fig. 6: Antenna multiplexer board (back side)

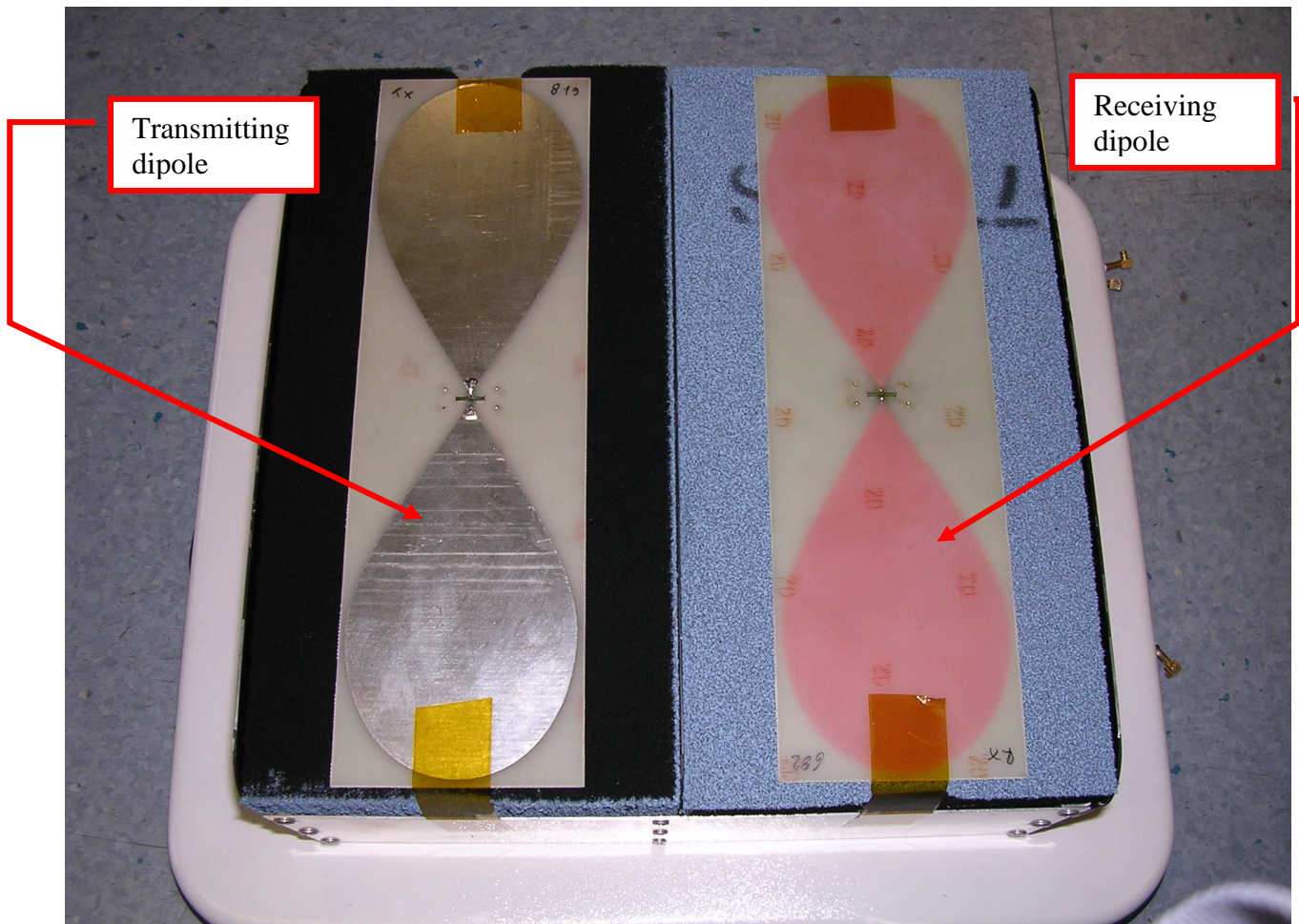


Fig. 7: SRS-FW400 antenna (bottom view)

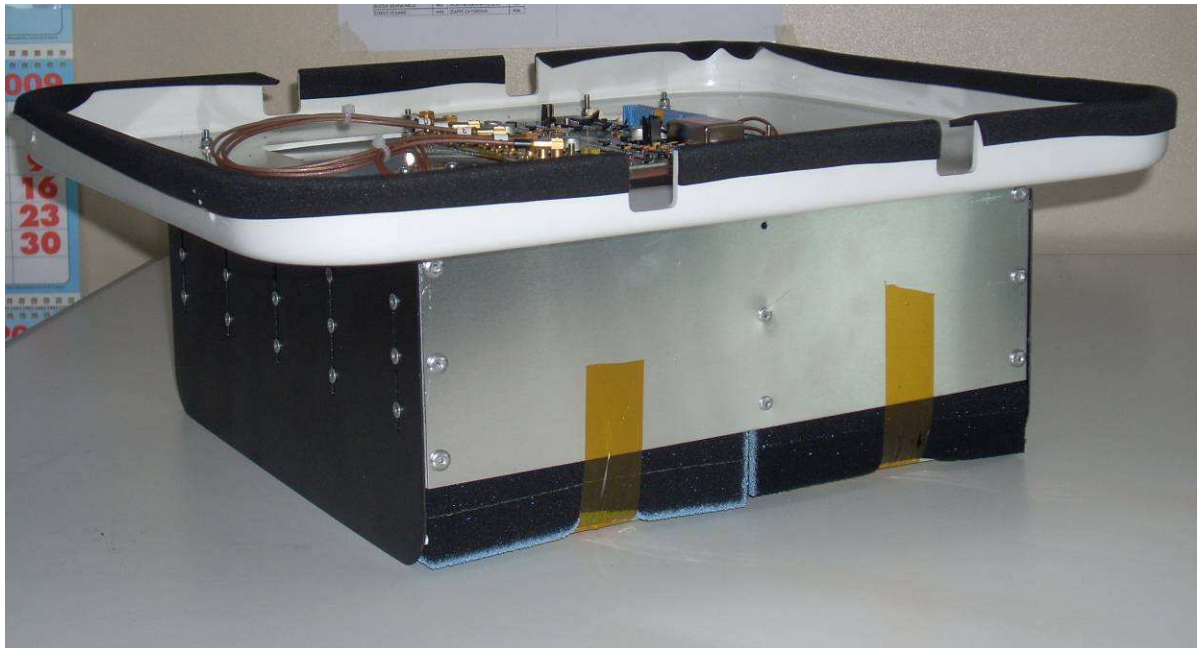


Fig. 8: SRS-FW400 antenna (side view)

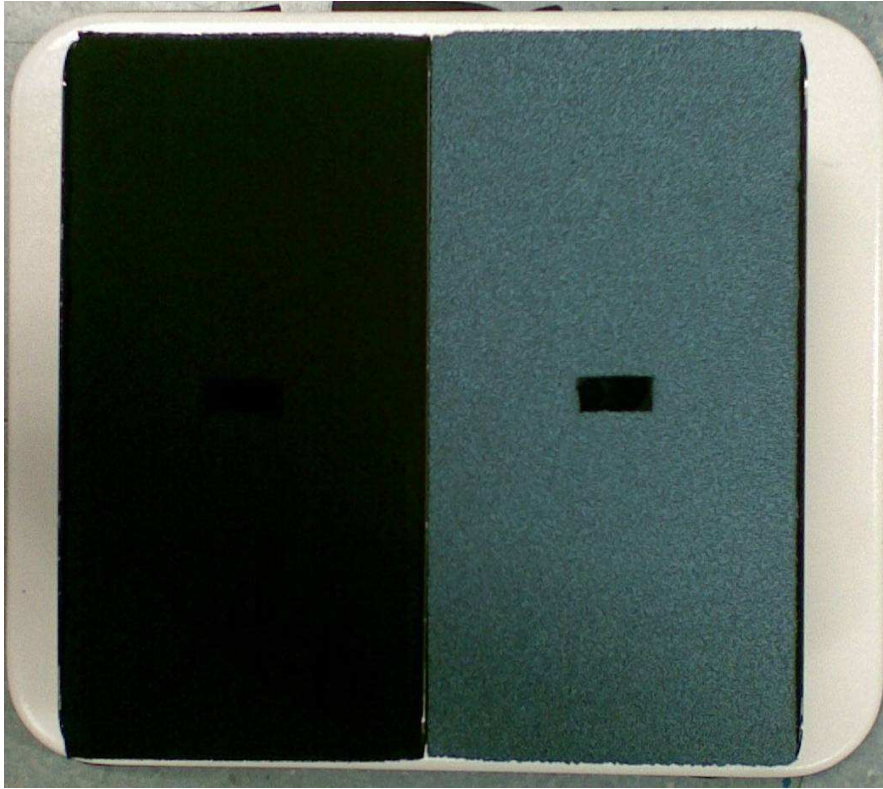


Fig. 9: SRS-FW400 antenna internal view with transmitting and receiving dipoles removed

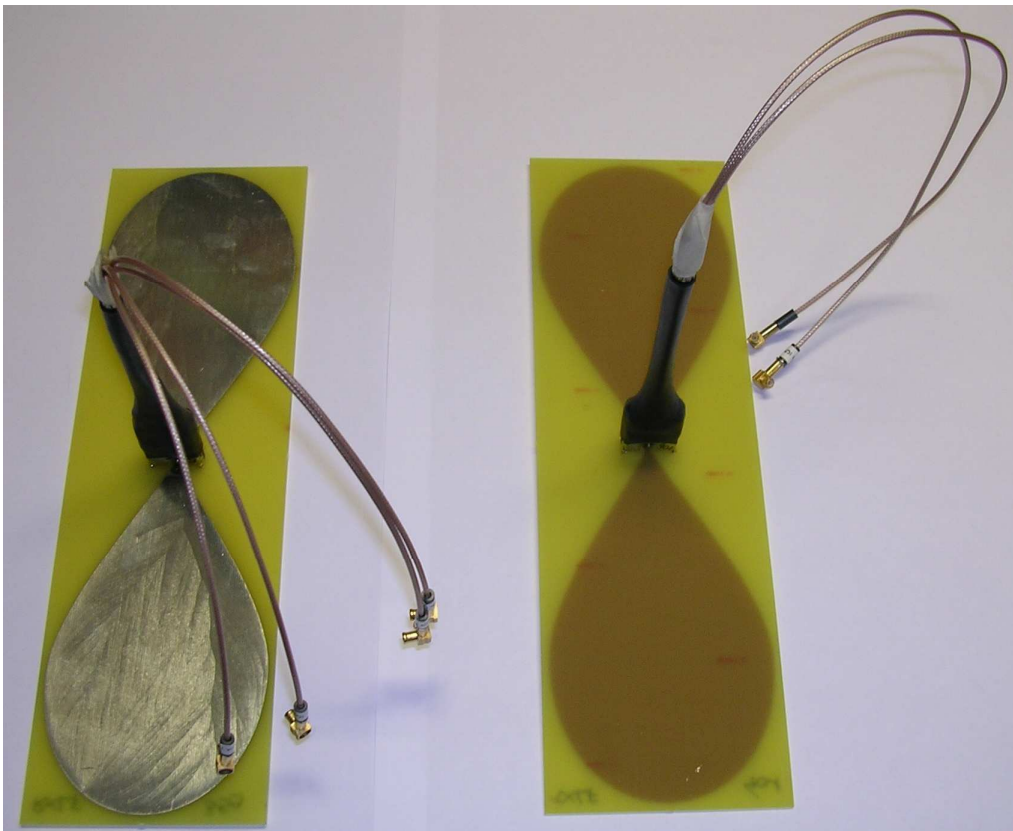


Fig. 10: on the left receiver (dipole and RX electronics with shield), on the right transmitter (dipole and TX electronics with shield)

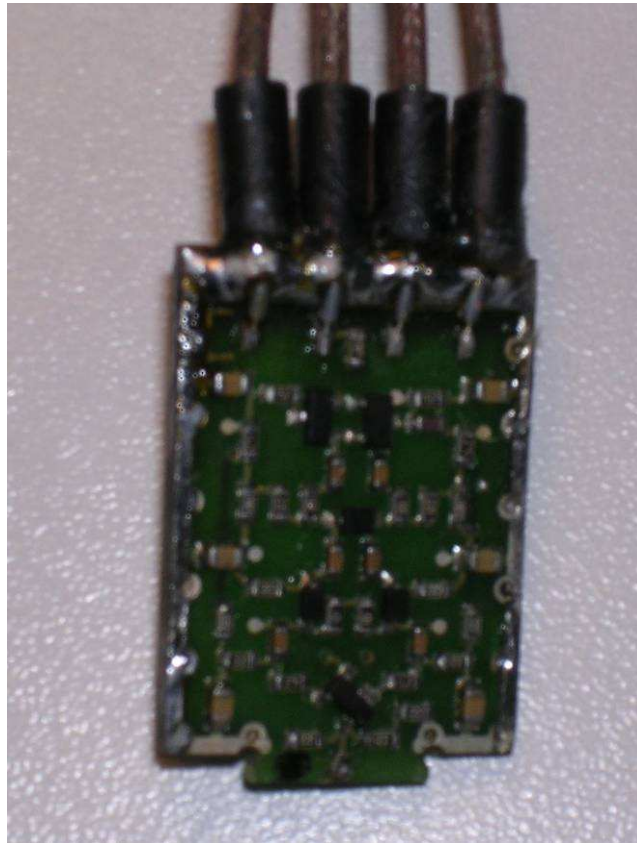


Fig. 11: Receiver board (front side)



Fig. 12: Receiver board (back side)

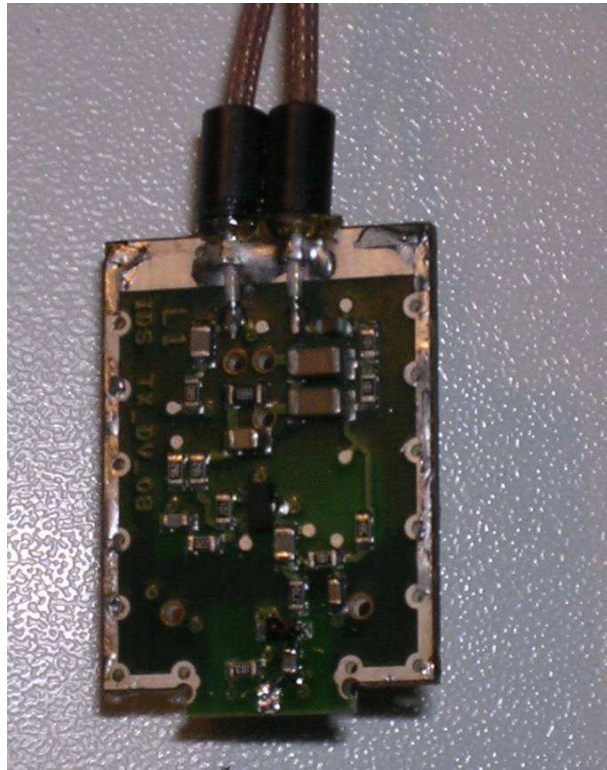


Fig. 13: Transmitter board (front side)

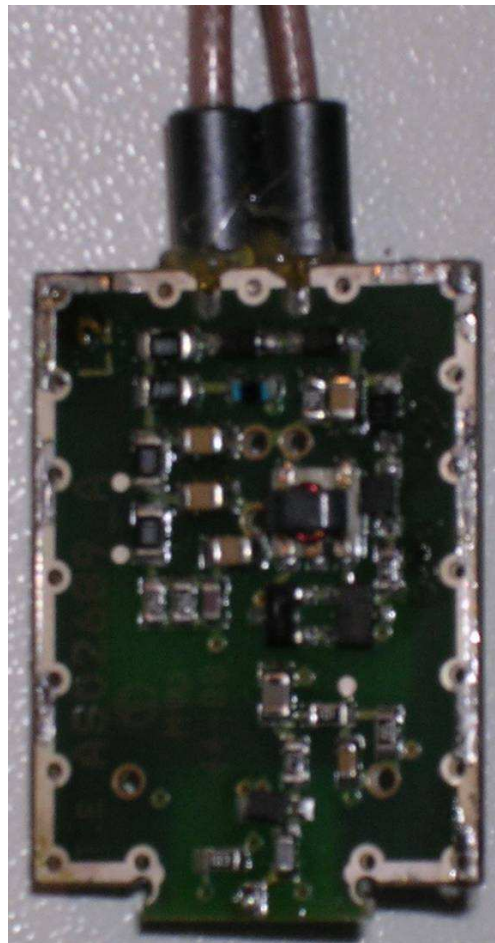


Fig. 14: Transmitter board (back side)