

# Table of Contents

<b>1. Important Safeguards</b>	3
<b>2. Battery Warnings</b>	3
<b>3. Explanation of Symbols</b>	3
<b>4. Product Description</b>	3
<b>5. Intended Use</b>	4
<b>6. Tools Needed</b>	4
<b>7. Before First Use</b>	4
<b>8. Setup</b>	4
8.1 Inserting batteries	4
8.2 Adding water for the smoke effect	5
8.3 Connecting the train carriages	5
8.4 Building the train track	5
<b>9. Operation</b>	5
9.1 Switching on/off	5
9.2 Controlling the engine	5
<b>10. Cleaning and Maintenance</b>	6
10.1 Cleaning	6
10.2 Storage	6
<b>11. Frequently Asked Questions</b>	6
<b>12. FCC Compliance Statement</b>	6
12.1 FCC Interference Statement	6
<b>13. Canada IC Notice</b>	6
<b>14. Battery Disposal</b>	6
<b>15. Specifications</b>	6
<b>16. Feedback and Help</b>	6

## 1. Important Safeguards



Read these instructions carefully and retain them for future use. If this product is passed to a third party, then these instructions must be included.

When using electric toys, basic safety precautions should always be followed to reduce the risk of fire, electric shock, and/or injury to persons including the following:



### WARNING:

**CHOKING HAZARD - SMALL PARTS. NOT FOR CHILDREN UNDER 3 YRS.**

### WARNING

Do not play with this toy near people with electronic devices such as pacemakers. Operation of a remote control toy in close proximity to a heart pacemaker could cause interference or failure of the pacemaker.

### NOTICE

It is critical to recognize the dangers posed by certain toys. To ensure children's safety:

- Heed the age recommendations. The idea that a child "will grow into it" may entice to ignore age recommendations, but that only puts a child at risk. Age recommendations are the minimum age children should be before they play with a toy.
- Consider child's maturity levels. Children mature at different paces, so even children who meet or exceed the minimum age listed may not necessarily be capable of safely playing with the electric toy. To determine if a child is mature enough for a given toy, pay particular attention to how the child plays with age-appropriate toys he or she already has. If a child tends to gravitate toward toys designed for younger children, he or she might not yet be ready for electric toys designed for his or her age.

- Carefully and clearly explain the toy to children. Before allowing a child to play with a new electric toy, carefully read the instructions and then read them aloud to your child. Play with the child when he or she uses the toy until you are confident the youngster understands the toy and how to operate it safely. It is recommended for parents to always supervise children when they are using electric toys.
- Store toys safely. Safe storage also is vital to prevent electric toy-related injuries. Store electric toys in dry areas that are not accessible to children.
- The toy shall be periodically examined for potential hazards. Any potentially hazardous parts shall be repaired or replaced. If parts like batteries need to be replaced, make sure children know that only adults are allowed to replace them.

**SAVE THESE INSTRUCTIONS**

## 2. Battery Warnings

### NOTICE

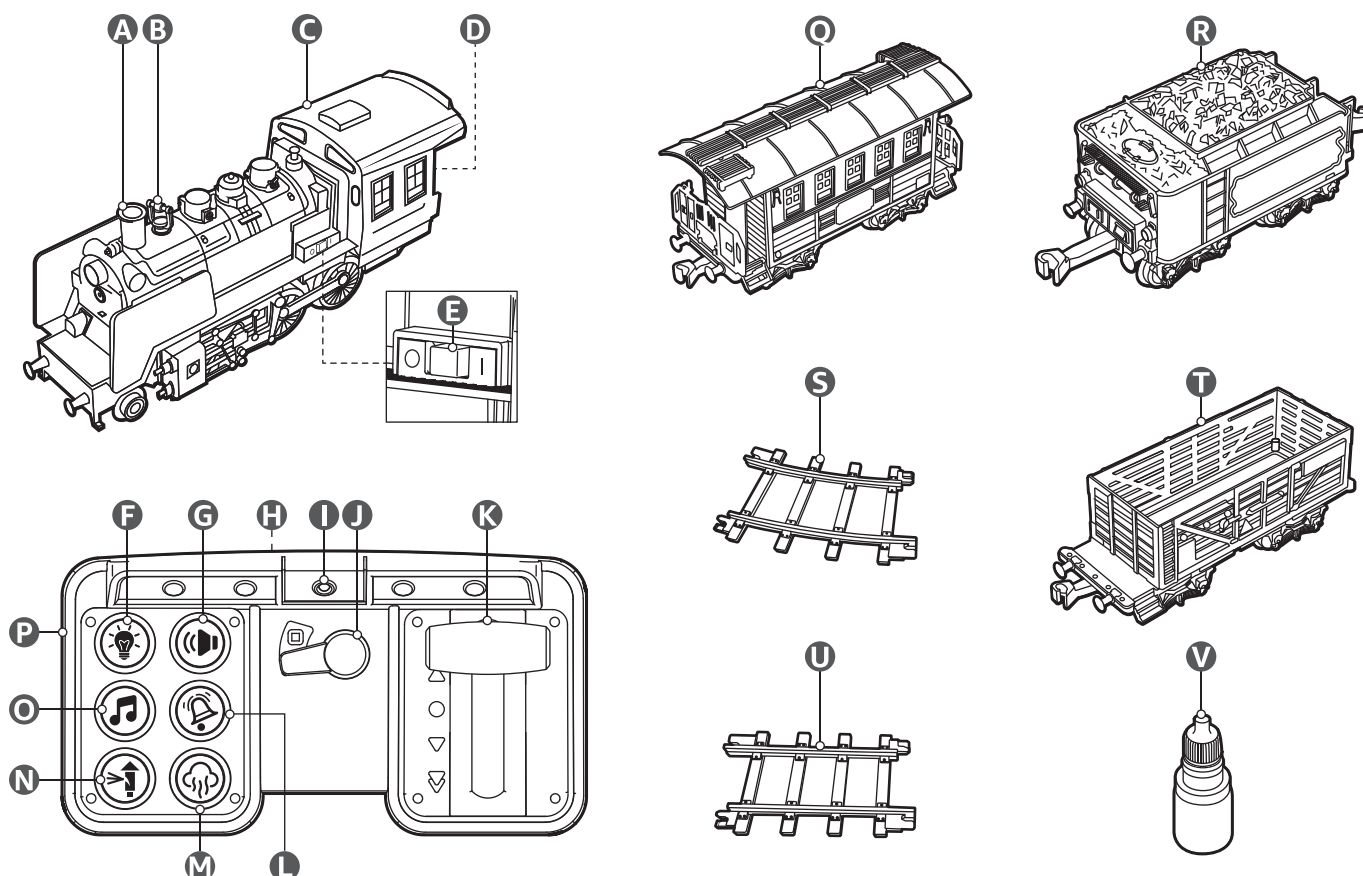
The batteries are not included.

- Non-rechargeable batteries are not to be recharged.
- Different types of batteries or new and used batteries are not to be mixed.
- Do not mix alkaline, standard (carbon-zinc), or rechargeable batteries.
- Batteries are to be inserted with the correct polarity (+ and -).
- Exhausted batteries are to be removed from the toy.
- The supply terminals are not to be short-circuited.

## 3. Explanation of Symbols

V	Volts
---	Direct current (DC).

## 4. Product Description



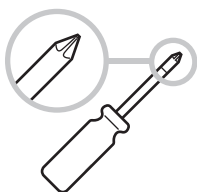
- A Smokestack
- B Bell plug
- C Engine
- D Battery compartment cover
- E On/off switch
- F Light button
- G Mute/unmute button
- H Battery compartment cover
- I Indicator light
- J On/off switch
- K Speed setting handle

- L Bell button
- M Steam button
- N Whistle button
- O Music button
- P Controller
- Q Caboose
- R Tender
- S Curved track x 24
- T Gondola
- U Straight track x 4
- V Dropper bottle

## 5. Intended Use

- ▶ This product is intended for children over 3 years old.
- ▶ This product is intended to be used in dry indoor areas only.

## 6. Tools Needed



## 7. Before First Use

### **⚠ DANGER** Risk of suffocation!

Keep any packaging materials away from children and pets – these materials are a potential source of danger, e.g. suffocation.

- ▶ Remove all the packing materials.
- ▶ Remove and review all components before use.
- ▶ Check the product for transport damages.

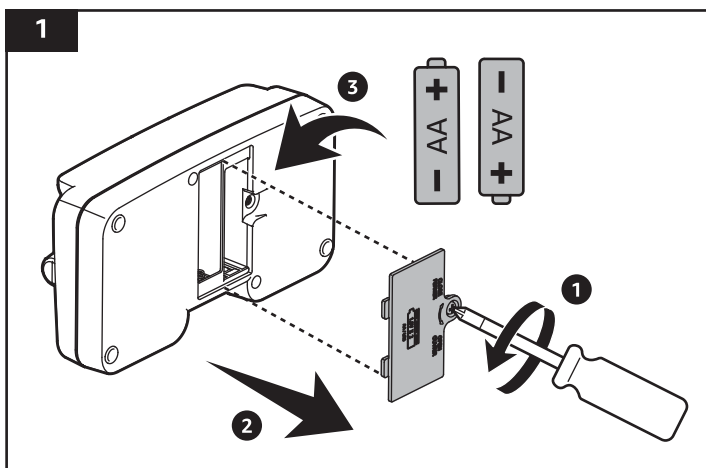
## 8. Setup

### 8.1 Inserting batteries

**NOTICE** Always insert batteries correctly with regard to polarity (+ and –) marked on the battery and the product.

#### 8.1.1 Controller

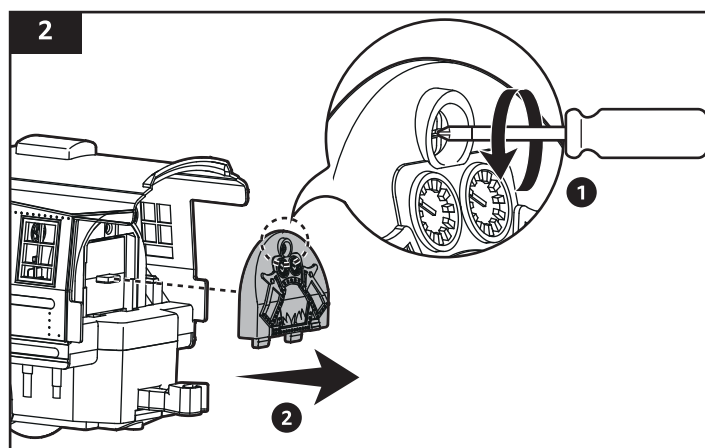
1. Use a screwdriver to loosen the screw on the battery compartment cover (H) of the controller (P) (Fig. 1).
2. Insert 2 x 1.5 V AA batteries (not included) into the battery compartment (Fig. 1).



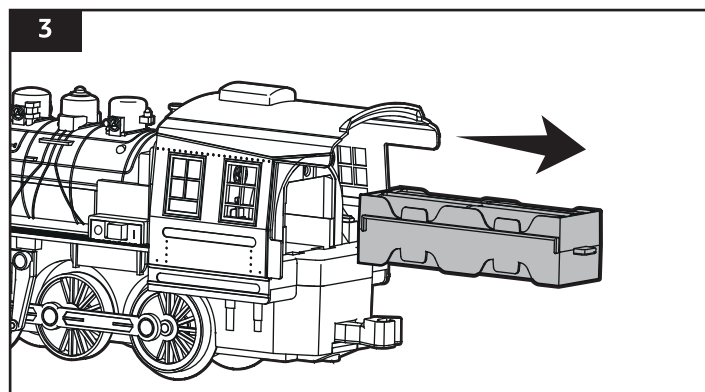
3. Refit the battery compartment cover (H) and tighten the screw.

#### 8.1.2 Engine

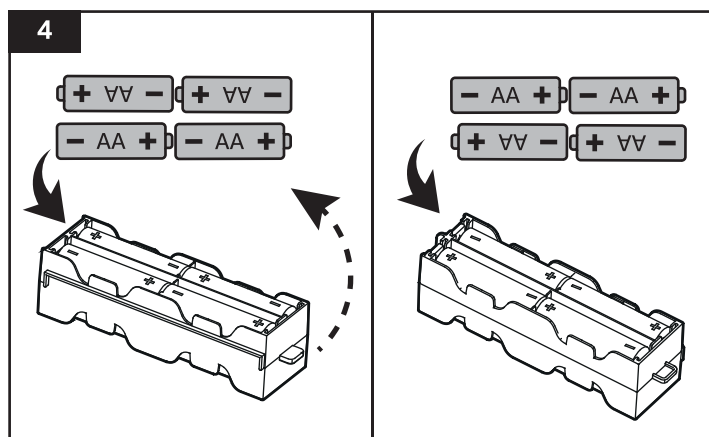
1. Use a screwdriver to loosen the screw on the battery compartment cover (D) of the engine (C) (Fig. 2).



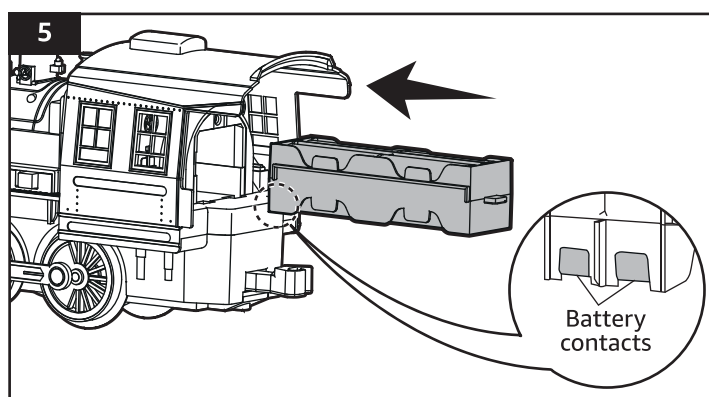
2. Take out the battery compartment (Fig. 3).



3. Insert 8 x 1.5 V AA batteries (not included) into the battery compartment (Fig. 4).



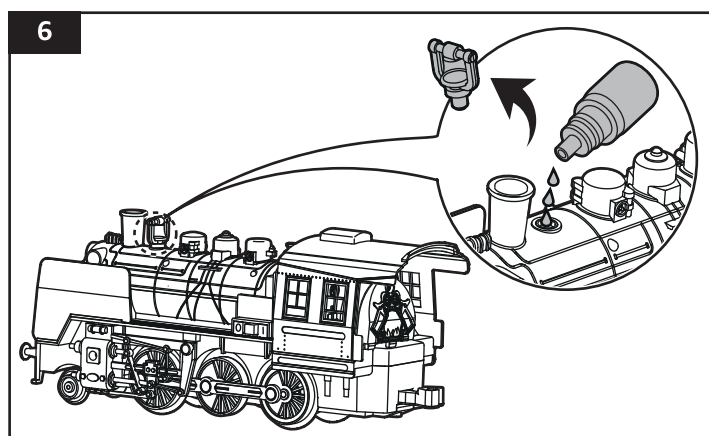
4. Place the battery compartment back into the engine (C) with the battery contacts facing inwards, and down (Fig. 5). The battery compartment should slide inside without any force.



5. Refit the battery compartment cover (D) and tighten the screw.

## 8.2 Adding water for the smoke effect

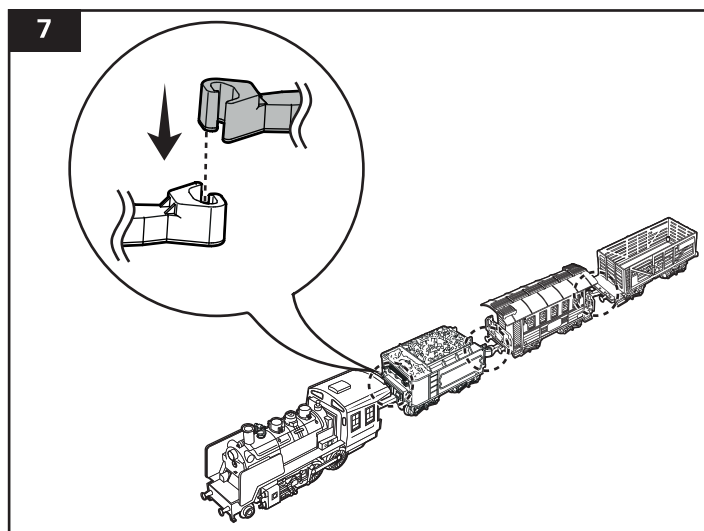
1. Fill the dropper bottle (V) with fresh water. Do not add any scented water or aroma oils.
2. Take off the bell plug (B) from the engine (C) (Fig. 6).
3. Use the dropper bottle (V) to squeeze 10 drops of water into the opening (Fig. 6).



4. Refit the bell plug (B) back into the opening.

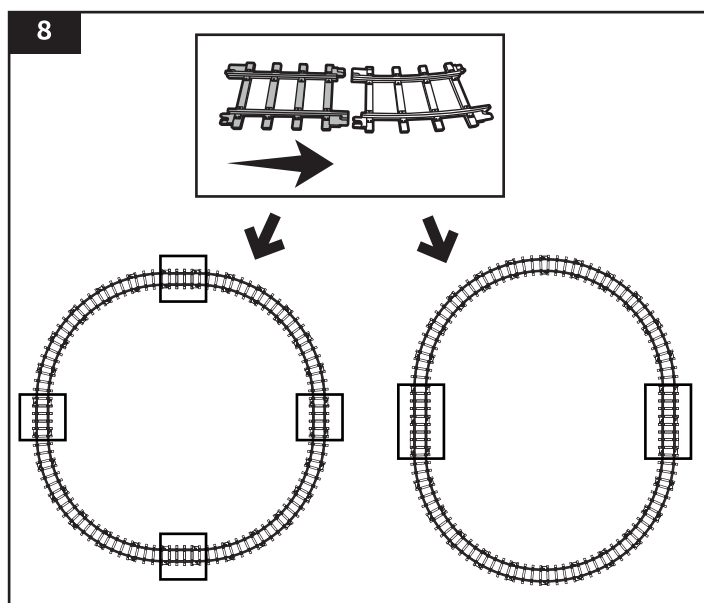
## 8.3 Connecting the train carriages

The engine (C) and the cars (Q, R, S) each have couplings to connect them together (Fig. 7).



## 8.4 Building the train track

There are two ways to assemble the tracks. Note the placements of the 4 straight tracks (U) to build each shape (Fig. 8):



## 9. Operation

### 9.1 Switching on/off

#### 9.1.1 Engine

- ▶ To switch on, set the on/off switch (E) to the **I** position. The engine (C) beeps, waiting for the controller (P) to be switched on and paired.
- ▶ To switch off, set the on/off switch (E) to the **O** position.

#### 9.1.2 Controller

- ▶ To switch on, set the on/off switch (J) to the **I** position. The controller (P) automatically pairs with the engine (C). The engine (C) and the controller (P) is paired when the engine (C) plays the bell and whistle sound effects.
- ▶ To switch off, set the on/off switch (J) to the **O** position.

### 9.2 Controlling the engine

- ▶ To go forward, push the speed setting handle (K) forwards.
- ▶ To go backwards, push the speed setting handle (K) backwards.
- ▶ To stop, set the speed setting handle (K) to the center position.

- ▶ To switch the front light of the engine (C) on/off, press the light button (F).
- ▶ To play music, press the music button (O). To stop the music, press the mute/unmute button (G).
- ▶ To play a whistle sound effect, press the whistle button (N).
- ▶ To enable/disable the puffing sound, press the mute/unmute button (G).
- ▶ To play a bell sound effect, press the bell button (L).
- ▶ To activate the water vapor effect, let the engine (C) run on the tracks for a while before pressing the steam button (M).

**NOTICE** After 10 minutes of inactivity, the connection between the controller (P) and the engine (C) breaks. To re-pair, set both to **O** position and then back to **I** position.

## 10. Cleaning and Maintenance

### NOTICE

- ▶ Take out the batteries in the product before cleaning.
- ▶ During cleaning do not immerse the electrical parts of the product in water or other liquids. Never hold the product under running water.

### 10.1 Cleaning

- ▶ To clean the product, wipe with a soft, slightly damp cloth.
- ▶ Wipe the product dry after cleaning.
- ▶ Never use corrosive detergents, wire brushes, abrasive scourers, metal or sharp utensils to clean the product.

### 10.2 Storage

- ▶ Store the product in its original packaging in a dry area. Keep away from children and pets.

## 11. Frequently Asked Questions

Problem	Solution
The engine/controller does not switch on. The engine runs very slow or stops.	▶ Check if the engine/controller is out of battery.
The engine is not pairing with the controller.	▶ Switch off both engine and controller and try to pair again.
The engine is not creating smoke.	▶ The engine is out of water. Refill the opening with 3-5 drops of water at a time until the smoke effect appears.  ▶ There may be an air bubble in the opening. Try gently blowing into the opening to clear out air that may be trapped inside.  ▶ The steam effect is generated as the engine moves around the track, and is driven by vibration, not heat. If the problem with this function persists, let the engine run around the track for 30 seconds before re-activating the steam effect.

## 12. FCC Compliance Statement

- This device complies with Part 15 of the FCC Rules. Operation is subject to the following two conditions:
  - this device may not cause harmful interference, and
  - this device must accept any interference received, including interference that may cause undesired operation.
- Changes or modifications not expressly approved by the party responsible for compliance could void the user's authority to operate the equipment.

### 12.1 FCC Interference Statement

This equipment has been tested and found to comply with the limits for a Class B digital device, pursuant to part 15 of the FCC Rules. These limits are designed to provide reasonable protection against harmful interference in a residential installation. This equipment generates, uses and can radiate radio frequency energy and, if not installed and used in accordance with the instructions, may cause harmful interference to radio communications. However, there is no guarantee that interference will not occur in a particular installation. If this equipment does cause harmful interference to radio or television reception, which can be determined by turning the equipment off and on, the user is encouraged to try to correct the interference by one or more of the following measures:

- ▶ Reorient or relocate the receiving antenna.
- ▶ Increase the separation between the equipment and receiver.
- ▶ Connect the equipment into an outlet on a circuit different from that to which the receiver is connected.
- ▶ Consult the dealer or an experienced radio / TV technician for help.

## 13. Canada IC Notice

- ▶ This device contains licence-exempt transmitter(s)/receiver(s) that comply with Innovation, Science and Economic Development Canada's licence-exempt RSS(s). Operation is subject to the following two conditions:
  - this device may not cause interference, and
  - this device must accept any interference, including interference that may cause undesired operation of the device.
- ▶ This equipment complies with Industry Canada radiation exposure limits set forth for an uncontrolled environment.
- ▶ This Class B digital apparatus complies with Canadian CAN ICES-003(B) / NMB-003(B) standard.

## 14. Battery Disposal



Do not dispose of used batteries with your household waste. Take them to an appropriate disposal/collection site.



To learn more about recycling batteries, visit: [call2recycle.org/what-can-i-recycle](http://call2recycle.org/what-can-i-recycle)

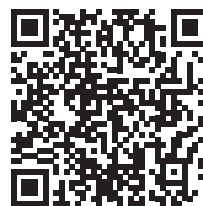
## 15. Specifications

Voltage/battery type	Engine: 12 V  8x 1.5 V AA LR6 (alkaline) Controller: 3 V  2x 1.5 V AA LR6 (alkaline)
Net weight	3.7 lbs (1.7 kg)
Dimensions (W x H x D)	Engine: 12.2 x 5.1 x 3.9" (31 x 13 x 10 cm) Caboose: 10.8 x 5.0 x 3.7" (27.5 x 12.8 x 9.5 cm) Gondola: 10.8 x 3.6 x 3.7" (27.5 x 9.2 x 9.5 cm) Tender: 9.6 x 3.8 x 3.7" (24.5 x 9.7 x 9.3 cm) Controller: 5.5 x 1.6 x 3" (14 x 4 x 7.5 cm)
Operating frequency	2.4 GHz
Remote control range	32 ft (10 m), without obstructions

## 16. Feedback and Help

We would love to hear your feedback. To ensure we are providing the best customer experience possible, please consider writing a customer review.

Scan QR Code below with your phone camera or QR reader:



If you need help with your Amazon Basics product, please use the website or number below.



[amazon.com/gp/help/customer/contact-us](https://amazon.com/gp/help/customer/contact-us)



+1 877-485-0385