

BS

PSE-01

5102
E1
0434

AEC 04G
14.3016

P-C16F676
-VSL
051220K

LATFH

A4tR

51M15

51M15

51M15

51M15

101

101

102

422

422

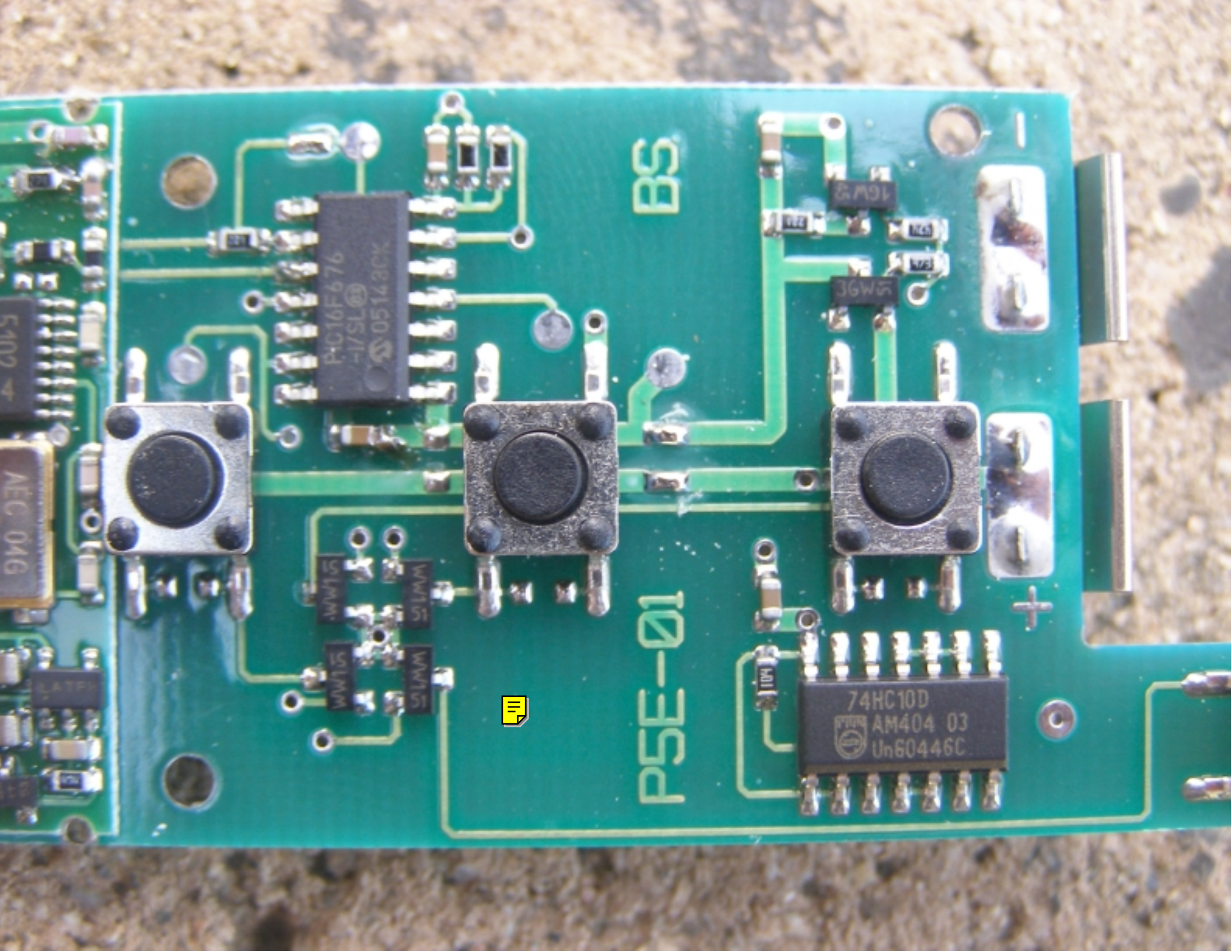
474

221

101

101

101



BS

PSE-01

PIC16F676
-1/SL
05143CK

74HC10D
AM404 03
Un60446C



