



Meraki

CW9162I-MR

Hardware Installation Guide

Trademarks

Meraki CW9162I-MR, Meraki Cloud Controller, and Meraki Mesh are trademarks of Cisco Systems, Inc. Other brand and product names are registered trademarks or trademarks of their respective holders.

Statement of Conditions

In the interest of improving internal design, operational function, and/or reliability, Cisco Systems reserves the right to make changes to the products described in this document without notice. Cisco Systems does not assume any liability that may occur due to the use or application of the product(s) or circuit layout(s) described herein.

Warranty

Meraki, Inc. provides a lifetime warranty on this product. Warranty details may be found at www.meraki.com/legal.

Table of Contents

1	Scope of Document and Related Publications	4
2	CW9162I-MR Overview	5
2.1	Package Contents	5
2.2	Understanding the CW9162I-MR	5
2.3	Security Features	7
2.4	Ethernet Ports	7
2.5	Power Source Options	7
2.6	Factory Reset Button	7
2.7	LED Indicators and Run Dark Mode	7
3	Pre-Install Preparation	8
3.1	Configure Your Network in Dashboard	8
3.2	Check and Upgrade Firmware	8
3.3	Check and Configure Firewall Settings	8
3.4	Assigning IP Addresses to CW9162I-MR	9
3.4.1	Dynamic Assignment	9
3.4.2	Static Assignment	9
3.4.3	Static IP Assignment via DHCP Reservations	9
3.5	Collect Tools	10
3.6	Collect Additional Hardware for Installation	10
4	Installation Instructions	11
4.1	Choose Your Mounting Location	11
4.2	Install the CW9162I-MR	11
4.2.1	Attach the Mount Plate	11
4.2.1.1	Wall or Solid Ceiling Mount Using Mount Plate	13
4.2.1.1	Drop Ceiling Mount Using Mount Plate	14
4.2.1.2	Electrical Junction Box Mount Using Mount Plate	18
4.2.2	Power the CW9162I-MR	20
4.2.2.1	Powering the CW9162I-MR with Meraki AC Adapter	21
4.2.2.2	Powering the CW9162I-MR with Meraki 802.3at Power over Ethernet Injector	21
4.2.2.3	Powering the CW9162I-MR with an 802.3at Power over Ethernet Switch	22
4.2.3	Mount the CW9162I-MR	22
4.2.3.1	Assemble Security Hasp to the CW9162I-MR	22
4.2.3.2	Assemble CW9162I-MR to the Mount Plate	23
4.2.3.3	Desk or Shelf Mount	25
4.3	Secure the CW9162I-MR	26
4.3.1	Security Screw	26
4.3.2	Kensington Lock	26
4.4	Verify Device Functionality and Test Network Coverage	27
5	Troubleshooting	27

1 Scope of Document and Related Publications

The CW9162I-MR Hardware Installation Guide describes the installation procedure for the CW9162I-MR indoor access point. Additional reference documents are available online at www.meraki.com/library/product.

2 CW9162I-MR Overview

The Meraki CW9162I-MR is an enterprise-class, dual-concurrent 4x4 MIMO 802.11ax indoor access point designed for high-density deployments in offices, schools, hospitals and hotels. When connected to the Meraki Cloud Controller, the CW9162I-MR enables the creation of ultra-high speed, reliable indoor wireless networks quickly, easily and cost-effectively.

2.1 Package Contents

The CW9162I-MR package contains the following:

CW9162I-MR access

point

Mounting plate

Drop ceiling mounting

kit Wall screws

Security screws

Mounting Template

2.2 Understanding the CW9162I-MR

CW9162I-MR Operation Temperature:

32 ° F to 104 ° F (0 ° C to 40 ° C)

Your Meraki CW9162I-MR has the following features:

Kensington lock hard point

Mount plate attachment slots (2x)

Cable access bay

Desk mount feet (4x) with M4*5mm pan-head screws

CW9162I-MR cable access bay

Factory Reset Button

Ethernet port Power supplied by PoE: 42.5-57Vdc,

AC Adapter plug (sold separately) Power supplied by adapter: 12Vdc, 2.5A

Your CW9162I-MR mount plate has the following features:

Access point mounting posts (2x)

Various mounting holes

2.3 Security Features

The CW9162I-MR features multiple options for physically securing the access point after installation:

1. Security screw – The accessory kit includes screws that can be used to secure the access point to the mount plate. Engaging the security screw prevents accidental dislodging and theft.
2. Kensington lock – The access point contains a hard point that allows it to be secured to any nearby permanent structure using a standard Kensington lock.

2.4 Ethernet Ports

The CW9162I-MR features an Ethernet RJ45 port that accepts 802.3af power (labeled “PoE”). This port should be used for uplink to your WAN connection.

2.5 Power Source Options

The CW9162I-MR access point can be powered using either the Meraki AC Adapter or 802.3af PoE Injector (both sold separately) or a third-party 802.3af PoE switch.

2.6 Factory Reset Button

If the button is pressed and held for at least five seconds and then released, the CW9162I-MR will reboot and be restored to its original factory settings by deleting all configuration information stored on the unit.

3 Pre-Install Preparation

You should complete the following steps before going on-site to perform an installation.

3.1 Configure Your Network in Dashboard

The following is a brief overview only of the steps required to add an CW9162I-MR to your network. For detailed instructions about creating, configuring and managing Meraki wireless networks, refer to the Meraki Cloud Controller Manual (meraki.com/library/product).

1. Login to <http://dashboard.meraki.com>. If this is your first time, create a new account.
2. Find the network to which you plan to add your APs or create a new network.
3. Add your APs to your network. You will need your Meraki order number (found on your invoice if you ordered directly from Meraki) or the serial number of each AP, which looks like Qxxx-xxxx-xxxx, and is found on the bottom of the unit. You will also need your Enterprise Cloud Controller license key, which you should have received via email from shipping@meraki.com.
4. Go to the map / floor plan view and place each AP on the map by clicking and dragging it to the location where you plan to mount it.

3.2 Check and Upgrade Firmware

To ensure your CW9162I-MR performs optimally immediately following installation, Meraki recommends that you facilitate a firmware upgrade prior to mounting your CW9162I-MR.

1. Attach your CW9162I-MR to power and a wired Internet connection. See p. 19 of this Hardware Installation Guide for details.
 2. The CW9162I-MR will turn on and the Power LED will glow solid orange. If the unit does not require a firmware upgrade, the Power LED will turn white within thirty seconds.
- * If the unit requires an upgrade, the Power LED will begin blinking orange until the upgrade is complete, at which point the Power LED will turn solid white. You should allow about an hour for the firmware upgrade to complete, depending on the speed of your internet connection.

3.3 Check and Configure Firewall Settings

If a firewall is in place, it must allow outgoing connections on particular ports to particular IP addresses. The most current list of outbound ports and IP addresses can be found here:

<http://tinyurl.com/y79une3>

3.4 Assigning IP Addresses to CW9162I-MR

All gateway CW9162I-MR (CW9162I-MR with Ethernet connections to the LAN) must be assigned routable IP addresses. These IP addresses can be dynamically assigned via DHCP or statically assigned.

3.4.1 Dynamic Assignment

When using DHCP, the DHCP server should be configured to assign a static IP address for each MAC address belonging to a Meraki AP. Other features of the wireless network such as 802.1x authentication, may rely on the property that the APs have static IP addresses.

3.4.2 Static Assignment

Static IPs are assigned using the local web server on each AP. The following procedure describes how to set the static IP:

1. Using a client machine (e.g. a laptop), connect to the AP either wirelessly (by associating to any SSID broadcast by the AP) or over a wired connection.

If using a wired connection, connect the client machine to the CW9162I-MR either through a PoE switch or a Meraki PoE Injector. If using a PoE switch, plug an Ethernet cable into the CW9162I-MR's Ethernet jack, and the other end into a PoE switch. Then connect the client machine over Ethernet cable to the PoE switch. If using a Meraki PoE Injector, connect the CW9162I-MR to the "PoE" port of the Injector, and the client machine to the "LAN" port.

2. Using a web browser on the client machine, access the AP's built-in web server by browsing to <http://my.meraki.com>. Alternatively, browse to <http://10.128.128.128>.
3. Click on the "Static IP Configuration" tab. Log in. The default username is "admin". The default password is the AP's serial number, with hyphens included
4. Configure the static IP address, net mask, gateway IP address and DNS servers that this AP will use on its wired connection.
5. If necessary, reconnect the AP to the LAN.

3.4.3 Static IP via DHCP Reservations

Instead of associating to each Meraki AP individually to configure static IP addresses, an administrator can assign static IP addresses on the upstream DHCP server. Through "DHCP reservations", IP addresses are "reserved" for the MAC addresses of the Meraki APs. Please consult the documentation for the DHCP server to configure DHCP reservations.

3.5 Collect Tools

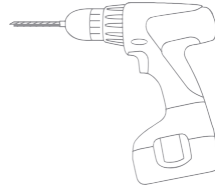
You will need the following tools to perform an installation:



Phillips
screwdriver



Hammer



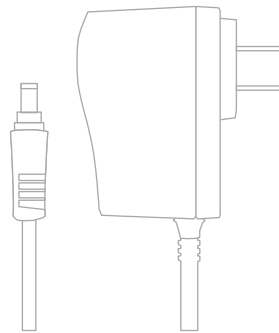
Drill with 1/4"
(6.3mm)
bits

3.6 Collect Additional Hardware for Installation



802.3at PoE power source (either
PoE switch or Meraki 802.3at PoE
Injector)

or



AC Adapter



Network cables with RJ45 connectors long
enough for your particular mounting
location

4 Installation Instructions

4.1 Choose Your Mounting Location

A good mounting location is important to getting the best performance out of your CW9162I-MR access point. Keep the following in mind:

1. The device should have unobstructed line of sight to most coverage areas. For example, if installing in an office filled with workspaces divided by mid-height cubicle walls, installing on the ceiling or high on a wall would be ideal.
2. Power over Ethernet supports a maximum cable length of 300 ft (100 m).
3. If being used in a mesh deployment, the CW9162I-MR should have line of sight to at least two other Meraki devices. For more detailed instructions regarding access point location selection, reference the Meraki Network Design Guide (meraki.com/library/product).

4.2 Install the CW9162I-MR

For most mounting scenarios, the CW9162I-MR mount plate provides a quick, simple, and flexible means of mounting your device. The installation should be done in two steps. First, install the mount plate to your selected location. Then, attach the CW9162I-MR to the mount plate.

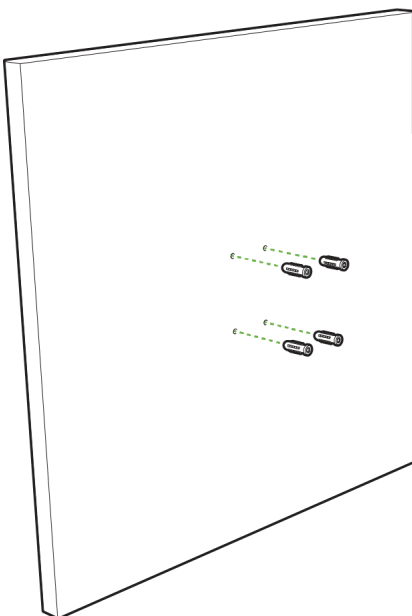
!!! This equipment is only suitable for mounting at heights ≤ 2 m !!!

4.2.1 Attach the Mount Plate

The CW9162I-MR mount plate can be used to install your access point in a wide range of scenarios: wall or solid ceiling, below a drop ceiling, on various electrical junction boxes, or above a drop ceiling (in the plenum).

The mount plate contains a variety of hole patterns that are customized for each installation scenario. The mounting template (included in box with mount plate) should be used to drill holes for wall mounts and also to identify the correct hole patterns in the mount plate that should be used for each type of mount.

The image below shows the hole patterns that should be used for each type of mount:



4.2.1.1 Wall or Solid Ceiling Mount Using Mount Plate

Using included screws, attach the mount plate to your mounting wall or ceiling.

It is recommended that the CW9162I-MR be mounted to a wall or solid ceiling using the mount plate for physical security reasons.



If mounting your CW9162I-MR to a wall, skip to “Power the CW9162I-MR“ on P. 20

4.2.1.2 Electrical Junction Box Mount Using Mount Plate

The CW9162I-MR can be mounted to a 4" square cable junction box, a 3.5 or 4" round cable junction box, or various U.S. and European outlet boxes (mounting screws are not included).

Using appropriate mounting hardware for your specific type of junction box, attach the mount

4.2.2 Power the CW9162I-MR

If mounting to an electrical junction box, feed the Ethernet cable through the cable access hole in the Mount Plate.

If mounting to a wall or ceiling, the Ethernet cable will feed through the cable slot on bottom of the CW9162I-MR.

4.2.2.1 Powering the CW9162I-MR with the Meraki AC Adapter (sold separately)

1. Plug the power cord into the CW9162I-MR and the other end into a wall outlet.
2. Plug an Ethernet cable that is connected to an active Ethernet connection into the Etho port on the CW9162I-MR.

4.2.2.2 Powering the CW9162I-MR with the Meraki 802.3at Power over Ethernet Injector (sold separately)

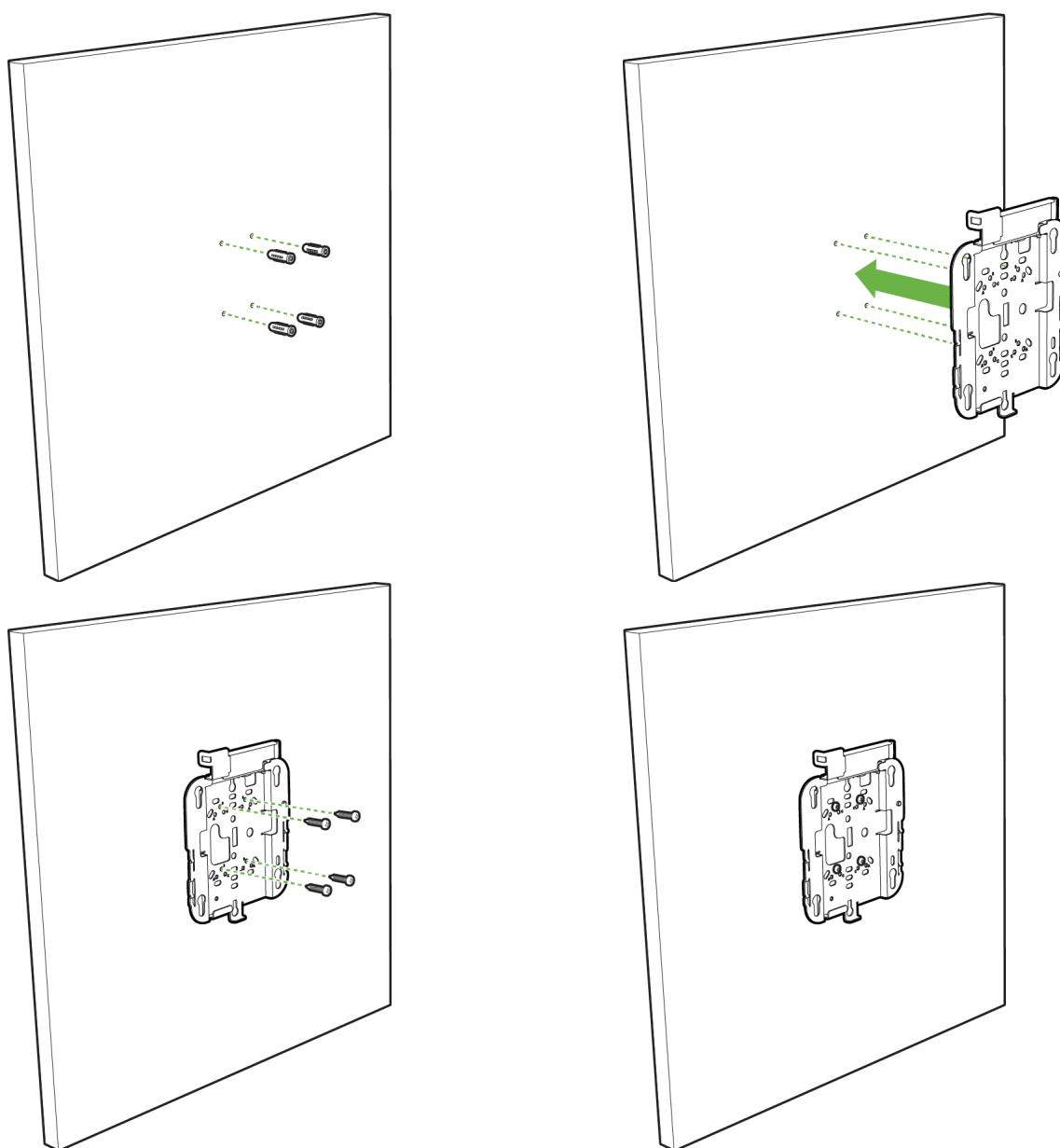
1. Plug the power cord into the PoE Injector and the other end into wall power.
2. Plug an Ethernet cable that is connected to an active Ethernet connection into the “IN” port on the injector.
3. Route Ethernet cable from the “OUT” port on the injector to the Etho port in the cable bay of the CW9162I-MR.

4.2.2.3 Powering the CW9162I-MR with an 802.3at Power over Ethernet Switch

Route Ethernet cable from a port on an active 802.3at PoE switch to the Etho port in the bay of the CW9162I-MR.

! The CW9162I-MR is Gigabit Ethernet-capable. To maximize device performance, a Gigabit-capable switch should be used.

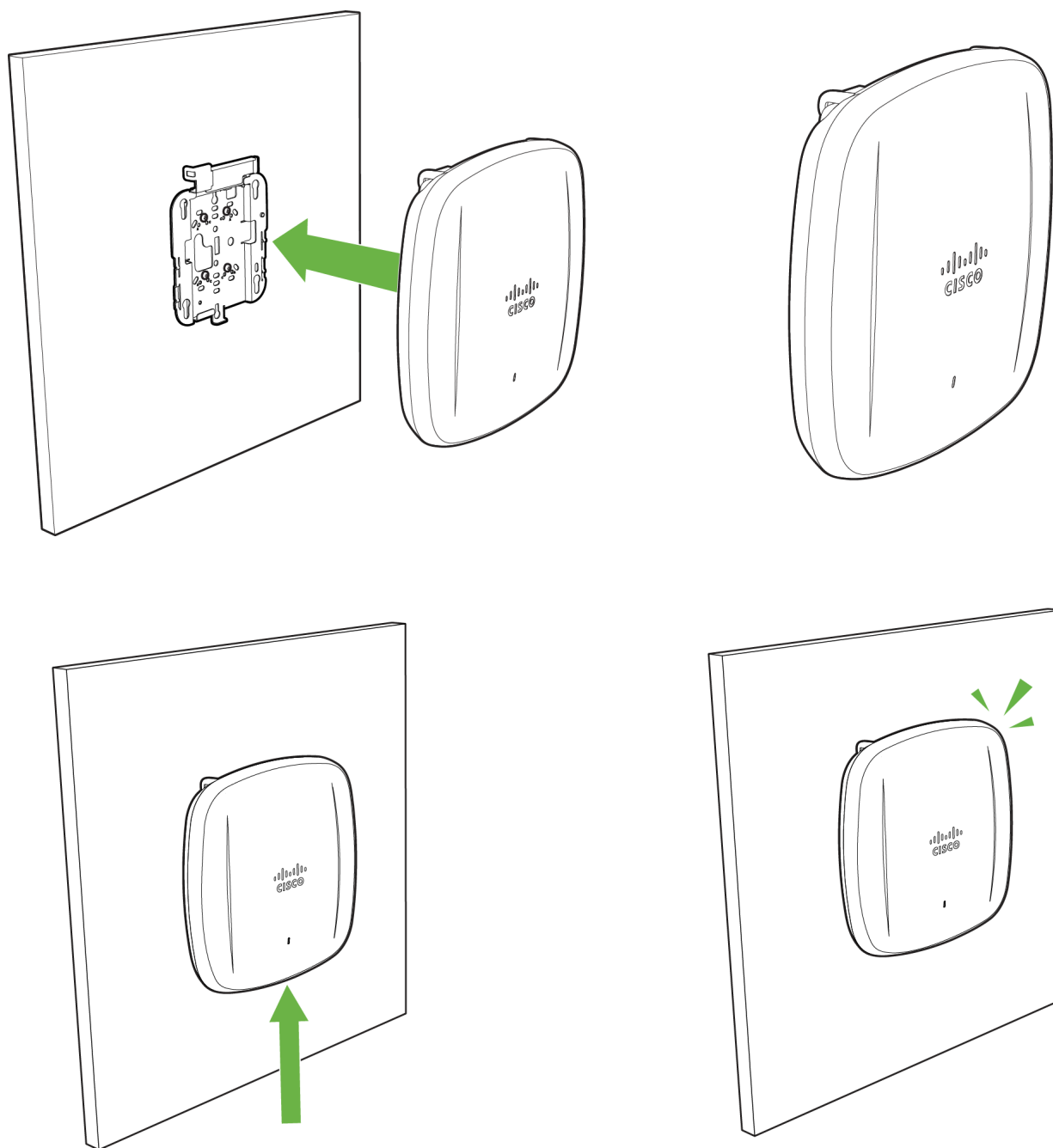
4.2.3 Mount the CW9162I-MR



4.2.3.2 Assemble CW9162I-MR to the Mount Plate

(This section applies to wall and/or solid ceiling, drop ceiling or electrical junction box mount where you have already installed the mount plate.)

Insert the top latch on the mount plate into the top mount plate attachment slots on the back of the device. Rotate the bottom of the unit into the bottom mount plate attachment slot. The unit will click into place.



4.2.3.3 Desk or Shelf Mount

The CWg162I-MR can be placed on a desk or shelf resting on the non-scratch rubber feet. The mount plate is not necessary for a desk or shelf mounting.

4.3 Secure the CW9162I-MR

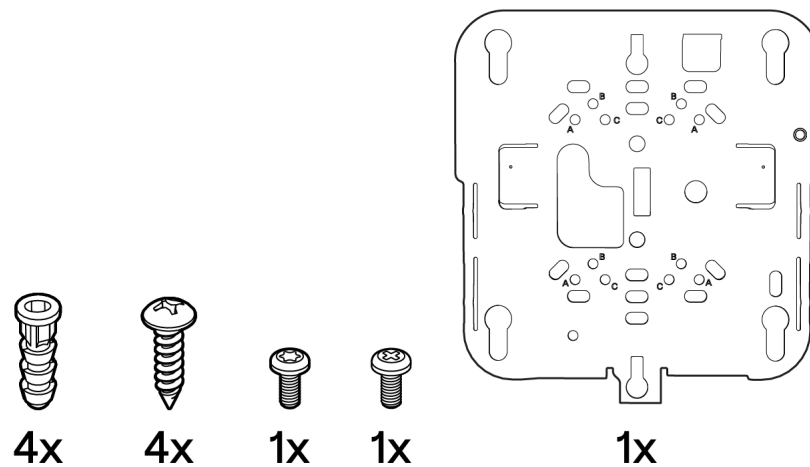
Depending on your mounting environment, you may want to secure the CW9162I-MR to its mount location. Your CW9162I-MR can be secured in several ways. If the CW9162I-MR has been installed using the mount plate, it can be secured via security screw (Torx and Philips head security screws are included; choose one), and/or Kensington lock. If the mount plate was not used, the CW9162I-MR can still be secured using a Kensington lock.

4.3.1 Security Screw

Install the security screw in the lower mount plate tab.

4.3.2 Kensington Lock

Attach a Kensington lock cable to the access point at the hard point on the side of the device. Attach the other end of the cable to a secure location, such as a pipe or building fixture.



4.4 Verify Device Functionality and Test Network Coverage

1. Check LEDs

The LED should be solid white. If it is flashing orange, the firmware is automatically upgrading and the LED should turn green when the upgrade is completed (normally in under thirty minutes).

Note: Your CW9162I-MR must have an active route to the Internet to check and upgrade its firmware.

2. Verify access point connectivity

Use any 802.11 client device to connect to the CW9162I-MR and verify proper connectivity using the client's web browser.

3. Check network coverage

Confirm that you have good signal strength throughout your coverage area. You can use the signal strength meter on a laptop, smart phone, or other wireless device.

5 Troubleshooting

Reference the Meraki knowledge base at http://meraki.com/support/knowledge_base for additional information and troubleshooting tips.

6 Regulatory

FCC Compliance Statement

This device complies with part 15 of the FCC rules. Operation is subject to the following two conditions: (1) This device may not cause harmful interference, and (2) this device must accept any interference received, including interference that may cause undesired operation.

FCC Interference Statement

This equipment has been tested and found to comply with the limits for a Class B digital device, pursuant to part 15 of the FCC Rules. These limits are designed to provide reasonable protection against harmful interference in a residential installation. This equipment generates, uses and can radiate radio frequency energy and, if not installed and used in accordance with the instructions, may cause harmful interference to radio communications. However, there is no guarantee that interference will not occur in a particular installation. If this equipment does cause harmful interference to radio or television reception, which can be determined by turning the equipment off and on, the user is encouraged to correct the interference by one of the following measures:

- Reorient or relocate the receiving antenna.
- Increase the separation between the equipment and receiver.
- Connect the equipment into an outlet on a circuit different from which the receiver is connected.
- Consult the dealer or an experienced radio/TV technician for help.

FCC Caution

Any changes or modifications not expressly approved by Meraki could void the user's authority to operate this equipment. This Transmitter must not be co-located or operation in conjunction with any other antenna or transmitter.

FCC Radiation Exposure Statement

This equipment complies with FCC radiation exposure limits set forth for an uncontrolled environment. This equipment should be installed and operated with minimum distance 44 cm between the radiator and your body. This transmitter must not be co-located or operating in conjunction with any other antenna or transmitter.

IEEE 802.11b or 802.11g operation of this product in the USA is firmware-limited to channels 1 through 11.

FCC regulations restrict the operation of this device to indoor use only.

The operation of this device is prohibited on oil platforms, cars, trains, boats, and aircraft, except that operation of this device is permitted in large aircraft while flying above 10,000 feet.

Operation of transmitters in the 5.925-7.125 GHz band is prohibited for control of or Communications with unmanned aircraft systems.

Professional installation is required

If the device is going to be operated in the 5.15 - 5.25 GHz frequency range, then it is restricted to indoor environment only.

This device meets all other requirements specified in Part 15E, Section 15.407 of the FCC Rules.

Industry Canada Statement

HVIN:CW9162I-MR Vo1

This device contains licence-exempt transmitter(s)/receiver(s) that comply with Innovation, Science and Economic Development Canada's licence-exempt RSS(s). Operation is subject to the following two conditions:

1. This device may not cause interference.
2. This device must accept any interference, including interference that may cause undesired operation of the device.

L'émetteur/récepteur exempt de licence contenu dans le présent appareil est conforme aux CNR d'Innovation, Sciences et Développement économique Canada applicables aux appareils radio exempts de licence. L'exploitation est autorisée aux deux conditions suivantes :

1. L'appareil ne doit pas produire de brouillage;
2. L'appareil doit accepter tout brouillage radioélectrique subi, même si le brouillage est susceptible d'en compromettre le fonctionnement.

Industry Canada Caution

(i) the device for operation in the band 5150-5250 MHz is only for indoor use to reduce the potential for harmful interference to co-channel mobile satellite systems;

Avertissement:

(i) les dispositifs fonctionnant dans la bande 5 150-5 250 MHz sont réservés uniquement pour une utilisation à l'intérieur afin de réduire les risques de brouillage préjudiciable aux systèmes de satellites mobiles utilisant les mêmes canaux;

Industry Canada Radiation Exposure Statement

This equipment complies with IC radiation exposure limits set forth for an uncontrolled environment. This equipment should be installed and operated with minimum distance 24 cm between the radiator & your body.

Déclaration d'exposition aux radiations

Cet équipement est conforme aux limites d'exposition aux rayonnements IC établies pour un environnement non contrôlé. Cet équipement doit être installé et utilisé avec un minimum de 24 cm de distance entre la source de rayonnement et votre corps.

Co-location Statement

The transmitter module may not be co-located with any other transmitter or antenna.
Le module émetteur peut ne pas être coïmplanté avec un autre émetteur ou antenne.

The Country Code Selection feature is disabled for products marketed in the US/Canada.

For product available in the USA/Canada market, only channel 1~11 can be operated. Selection of other channels is not possible.

Pour les produits disponibles aux États-Unis / Canada du marché, seul le canal 1 à 11 peuvent être exploités. Sélection d'autres canaux n'est pas possible.

Operation shall be limited to indoor use only.

Utilisation limitée à l'intérieur seulement.

Operation on oil platforms, cars, trains, boats and aircraft shall be prohibited except for on large aircraft flying above 10,000 ft.

Utilisation interdite à bord de plateformes de forage pétrolier, de voitures, de trains, de bateaux et d'aéronefs, sauf à bord d'un gros aéronef volant à plus de 10 000 pieds d'altitude.


EU/UK

Radio	Frequency Bands	Maximum Total EIRP Power Level (dBm)	(EU)
Wi-Fi	2400-2483.5MHz	23	
	5150-5250 MHz	23	
	5250-5350 MHz	23	
	5470-5725 MHz	30	
	5945-6425 MHz	23	
Bluetooth Low Energy (BLE)	2400-2483.5MHz	9.92	

Radio	Frequency Bands	Maximum Total EIRP Power Level (dBm)	(UK)
Wi-Fi	2400-2483.5MHz	23	
	5150-5250 MHz	23	
	5250-5350 MHz	23	
	5470-5725 MHz	30	
	5725-5850 MHz	23	
	5925-6425 MHz	23	
Bluetooth Low Energy (BLE)	2400-2483.5MHz	9.92	

This equipment complies with EU & UK radiation exposure limits set forth for an uncontrolled environment. This equipment should be installed and operated with minimum distance 20cm between the radiator & your body.

CE : The device is restricted to indoor use only when operating in the 5150 to 5350 MHz, 5945 to 6425MHz frequency range.

	AT	BE	BG	HR	CH	CY	CZ
	DE	DK	EE	FI	FR	EL	HU
	IE	IS	IT	LI	LV	LT	LU

	MT	NL	NO	PL	PT	RO	SK
	TR	SI	ES	SE	UK(NI)		

UK : The device is restricted to indoor use only when operating in the 5150 to 5350 MHz, 5925 to 6425MHz frequency range.



Hereby, Cisco Systems Inc. declares that the radio equipment type CW9162I series is in compliance with Directive 2014/53/EU and Radio Equipment Regulations 2017.

The full text of the EU/UK declaration of conformity is available at the following internet address:

<https://meraki.cisco.com/compliance/?sortby=most-recent>

NCC

取得審驗證明之低功率射頻器材，非經核准，公司、商號或使用者均不得擅自變更頻率、加大功率或變更原設計之特性及功能。低功率射頻器材之使用不得影響飛航安全及干擾合法通信；經發現有干擾現象時，應立即停用，並改善至無干擾時方得繼續使用。前述合法通信，指依電信管理法規定作業之無線電通信。低功率射頻器材須忍受合法通信或工業、科學及醫療用電波輻射性電機設備之干擾。應避免影響附近雷達系統之操作。

備註: 6E 頻段在台灣尚未開放使用，故本器材在台灣暫不支援 6E。

Safety caution:

Ensure to connect the power cord of the power adapter to a socket outlet with an earthing connection.

This equipment is suitable for use in environment air spaces(plenums)in accordance with Section 300.22(C) of the National Electrical Code, and Sections2-128,12-010(3) and 12-100of the Canadian Electrical Code, Part 1, CSAC22.2. External power supply, power adapter and/or power injector, if provided, are not suitable for installation in air spaces. Statement 440

Ensure that the AP is powered using a UL-compliant PoE power source. You must connect the unit only to PoE network without routing to the outside plant.

Copyright

© 2020 Cisco Systems, Inc. All rights reserved. Trademarks

www.ciscosystems.com
Cisco Systems, Inc.
170 West Tasman Drive
San Jose, CA 95134 USA