

# BT-008 PORTABLE BLUETOOTH<sup>®</sup> STEREO SPEAKER

This versatile Bluetooth speaker is portable and specially designed to enjoy convenience and freedom of wireless communication. Dual capability of application on desktop like a conference speakerphone and stereo music enjoyment through A2DP profile.

up to  
**6**  
hours  
working time

up to  
**400**  
hours  
standby

  
net meeting



## INSTRUCTIONS



Cell Phone



PC



Notebook

Please read carefully all safety instructions before using this device



## Features

### Features

- Stream music over A2DP & answer VoIP calls from your PC/Laptop.
- Stream music over A2DP & answer calls from your mobile phone, PMP.
- Compact design, easy to carry and store.
- Built-in microphone for conversation via Skype, MSN, Yahoo Messenger, & Google Talk...etc.
- Crystal clear stereo sound performance.
- Music stream automatically after hang up the phone call.
- Voice calls over Bluetooth using the Headset/Handsfree profile.
- Wireless stereo music over Bluetooth using the A2DP high quality stereo audio profile.
- Automatic link with last paired device.

#### NOTICE:

- **Do not** insert the USB Bluetooth Dongle until you have completed the software installation.
- **Pair** the device with a Bluetooth mobile phone, computer or other Bluetooth device before making calls or listening to music. The Bluetooth audio connection between the wireless speaker and other devices is established by setting up PAIRING links stored in each device ready for quick connection when requested.

### Bluetooth Profile

#### ■ What are **Headset** and **Hands free Profile**?

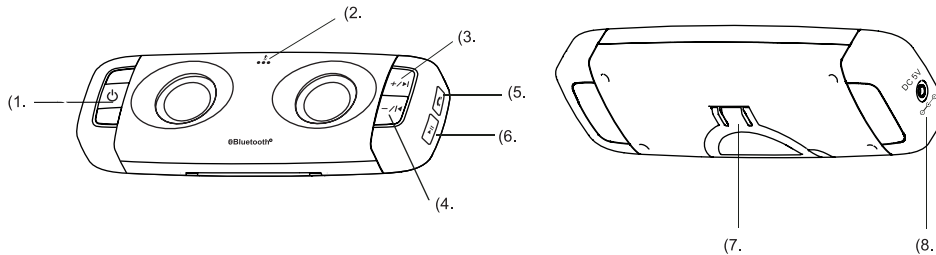
The HSP describes how a Bluetooth enabled headset should communicate with a computer or other Bluetooth enabled device such as a mobile phone. HFP describes how a gateway device can be used to place and receive calls for a hand-free device. A typical configuration is an automobile using a mobile phone for a gateway device.

#### ■ What is **A2DP**?

Advanced Audio Distribution Profile (A2DP) technology is a new music revolution allowing you to send stereo music from one device to another without using wires. A2DP is crystal clear music without the hassle of plugging cables. Bluetooth Wireless Technology with the A2DP technology makes mobile phones, PMP's and computers capable of streaming stereo music.



## Function Description



- 1) : On/Off setting for the device.
- 2) : Microphone: to be used for answering the phone call or VoIP.
- 3) : Short press the button for volume up; press the button 3 seconds for the track forward.
- 4) : Short press the button for volume down; press the button 3 seconds for the track backward.
- 5) : Pairing: Long press the button to connect with audio devices capable of Bluetooth connection; answering the incoming phone/ VoIP call.
- 6) : Stop/Pause: Short press the button to play/ pause the music; press the button 3 seconds to stop the music.
- 7) Bracket: to hold up the device at an optimized angle.
- 8) Charge jack: to recharge the Li Polymer battery via DC 5V/300mA adapter.

### Button Operation:

Button Operation	Time(sec)
Short Press	0.5
Double Press	0.5
Long Press	1
Very Long Press	3.5
Very Very Long Press	6

### LED Definition:

Event	LED Status
Power On/Off	Blue LED ON
Enter Pairing	Blue LED blink
A2DP Connected	Blue LED blink
Active Call	Blue LED 0.05s ON , 2s OFF
Incoming Call	Blue LED quick blink
Reset Paired Device List	Red LED double blink 1s ON , 0.5s OFF
Low Battery	Red LED double blink 0.05s ON , 0.05s OFF

### Button Function Definition:

Mode	Button 1 function
	Power
Power OFF	Long Press --- Power On (BT Core)
Other	Long Press --- Power Off (BT Core)

Mode	Button 5 function
	Pairing
Power ON	Long Press --- Connect To Last Paired Audio Getway and A2DP Media
	Very Long Press --- Enter Pairing
	Very Very Long Press --- Reset Paired Device
Phone Ringing	Short Press --- Answer Call
	Double Press -- Reject Call
Active Call	Short Press --- Hang Up Call

Mode	Button 6 Button function
	Play / Pause / Stop
Audio Streaming Mode	Short Press --- Play / Pause music
	Long Press --- Stop music

Mode	Button 4 function
	Vol. -
Active Call	Volume Down
Phone Mode	Volume Down
Audio Streaming Mode	Short Press --- Volume Down
	Long Press --- Backward a track

Mode	Button 3 function
	Vol. +
Active Call	Volume Up
Phone Mode	Volume Up
Audio Streaming Mode	Short Press --- Volume Up
	Long Press --- Forward a track



## Getting Start

### Charge your speaker:


1. Please fully charge the built-in battery when you start to use this device at the first time.
2. You could alternately charge the device from adapter or directly from USB port.
3. The general battery charging time is about 6 hours.
4. The charge indicator at right side will light red when the battery is being charged.
5. Please make sure to unplug the adapter when the charging indication light from red to blue that means the battery has been fully charged.

### NOTICE:

It is normal that the battery capacity could gradually decline and need longer charging time after long-term usage.

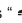

### Pairing:

Kindly follow the pairing procedure hereunder. Please make sure you have actived the BT function in your device before pairing.

1. Turn the Bluetooth stereo speaker on, and the device directly get into active mode in 3 sec.
2. Press the pairing button "  " over 5 sec till blue LED indication blinks rapidly. At this moment, the speaker is in the pairing mode.
3. Activate Bluetooth devices searching on your Bluetooth audio device by following their original instruction. Please select the device name " Bluetooth stereo speaker " from list, and enter the password " 0000 " to complete a pairing connection.

4. This speaker will automatically connect to your Bluetooth devices once activate the BT for repeated utilization.

### Answering Call:

1. The speaker supports two audio connections. Please select HEADSET/HANDSFREE profile if you would like to connect for calling, or A2DP/AVRCP profile for stereo sound enjoyment.
2. When incoming call ringing, the LED on right side will quick blink. Press "  " to answer the phone call or VoIP call for conversation.
3. When you want to finish the phone call, just press the answer button "  " again, and you can hang up the phone call.
4. When you receive a phone call, the music will pause automatically. As soon as the call is hung up, the music rebound afterward.

*\* Make sure your mobile phone supports Bluetooth function*

### NOTICE:

If the pairing can not be established within 3 minutes, the blue indicator turns to regular blinking once every second automatically. A re-pairing procedure is needed. Please repeat pairing procedure shown above.



## Specifications

### Specifications:

1. Bluetooth Spec: Bluetooth 2.0 +EDR
2. Speaker Impedance: 4Ω 3W
3. Audio Format: SBC
4. Power Supply: Li Polymer Recharge Battery (1400mA/h 3.7V).
5. Power Output: RMS 1W\*2
6. Working Time: 6 Hours
7. Charge Time: 6 Hours
8. Working Current: ≈ 220mA
9. Stand-By: Approx 400 Hours

### Speaker:

Dimension: 32mm x32mm  
Loading Impedance: 4Ω  
Out Sound Pressure Level: 84dB±4dB  
Frequency Response: 20 ~ 20K Hz

### Microphone:

Output Impedance: ≤ 2.2KΩ  
Directivity: Omni-directional  
Frequency Range: 100~10K Hz

**Accessories:** 5V 300mA Power adapter.  
Carry bag

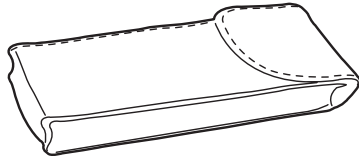
**Dimension:** 174\*58 \*32 mm



## Package Content:

### Portable Bluetooth Stereo Speaker

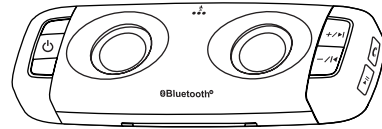
- AC/DC Adapter 100~240V 50/60Hz 5V/300mA
- Carry Bag
- Bluetooth USB Dongle (OPTIONAL)
- Driver for Bluetooth USB Dongle (OPTIONAL)



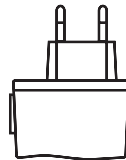
Carry bag



USB Power Charger x1



Driver for Bluetooth USB Dongle



5V 300mA Power adapter



Bluetooth USB Dongle



## Safety Notice

**CAUTION**  
RISK OF ELECTRIC SHOCK  
DO NOT OPEN

TO PREVENT THE RISK OF ELECTRIC SHOCK, DO NOT REMOVE SPEAKER'S COVER, NO USER-SERVICEABLE PARTS INSIDE. REFER SERVICING TO QUALIFIED SERVICE PERSONNEL.

### IMPORTANT SAFETY INSTRUCTIONS

**READ INSTRUCTIONS** - All safety and operating instructions should be read before this amplified speaker system is connected.

**RETAIN INSTRUCTIONS** - The safety and operation instructions should be retained for future reference.

**FOLLOW INSTRUCTIONS** - All operating and using instructions should be followed.

**HEED WARNINGS** - All warnings on the speakers and in the operating instructions should be adhered to.

**VENTILATION** - Slots and openings in the cabinet are provided for ventilation and to ensure reliable operation of the speakers and to prevent it from overheating. These slots must not be blocked or covered. The openings should never be blocked by placing the product on a bed, sofa, rug or other similar surfaces. The unit should not be placed in a built-in installation such as a bookcase or rack unless proper ventilation is provided.

**HEAT** - This unit should be situated away from heat sources such as radiators, heat registers, stoves or other units (including amplifiers) that produce heat.

**POWER SOURCES** - The unit should be connected to a power supply only of the type described in the operating instructions or marked on the unit.

**POLARIZATION** - The unit may be equipped with a polarized alternating current line plug (a plug having one blade wider than the other). This is a safety feature. Do not defeat the safety purpose of the polarized plug.

**CLEANING** - Unplug the unit from the wall outlet or other power source before cleaning. Do not use liquid cleaners or aerosol cleaners. Use a damp cloth for cleaning.

**WATER AND MOISTURE** - The unit should not be used near water - for example, near a bathtub, washbowl, kitchen sink, laundry tub, in a wet basement, or near a swimming pool, and the like.

**POWER CORD PROTECTION** - Power supply cords should be routed so that they are not likely to be walked on or pinched by items placed upon or against them, paying particular attention to cords at plug, convenience receptacles, and the point where they exit from the unit.

**NON-USE PERIODS** - The power cord of the unit should be unplugged from the outlet when left unused for a long period of time.

**OBJECTS OF LIQUID ENTRY** - Care should be taken so the objects do not fall and liquids are not spilled on the unit.

**DAMAGE REQUIRING SERVICE** - The unit should be serviced by qualified service personnel when:  
a) The power supply cord or the plug has been damaged, or  
b) Objects have fallen, or liquid has been spilled into the unit, or  
c) If the unit has been exposed to rain or water, or  
d) If the unit does not appear to operate normally nor exhibits a marked change in performance, or  
e) If the unit has been dropped, or the enclosure is damaged.

**CARTS AND STANDS** - The unit should be used only with a cart or stand that is recommended by the manufacturer.

### Federal Communications Commission(FCC)Statement

--15.21

You are cautioned that changes or modifications not expressly approved by the part responsible for compliance could void the user's authority to operate the equipment.

--15.105(b)

This equipment has been tested and found to comply with the limits for a Class B digital device, pursuant to part 15 of the FCC rules. These limits are designed to provide reasonable protection against harmful interference in a residential installation. This equipment generates, uses and can radiate radio frequency energy and, if not installed and used in accordance with the instructions, may cause harmful interference to radio communications. However, there is no guarantee that interference will not occur in a particular installation. If this equipment does cause harmful interference to radio or television reception, which can be determined by turning the equipment off and on, the user is encouraged to try to correct the interference by one or more of the following measures:

- Reorient or relocate the receiving antenna.
- Increase the separation between the equipment and receiver.
- Connect the equipment into an outlet on a circuit different from that to which the receiver is connected.
- Consult the dealer or an experienced radio/TV technician for help.

This device complies with Part 15 of the FCC Rules. Operation is subject to the following two conditions:

- 1) this device may not cause harmful interference, and
- 2) this device must accept any interference received, including interference that may cause undesired operation.

### FCC RF Radiation Exposure Statement:

This equipment complies with FCC radiation exposure limits set forth for an uncontrolled environment. End users must follow the specific operating instructions for satisfying RF exposure compliance. This transmitter must not be co-located or operating in conjunction or operating in conjunction with any other antenna or transmitter .

Caution: Users are not permitted to make changer or modify the device in any way. Changes or modifications not expressly approved by the party responsible for compliance could void the user's authority to operate the equipment.




## How to Connect your Bluetooth Device




5. Press BT stereo speaker, click the right mouse button, and choose "pair" to pair with your PC. The PC will ask to provide the passkey, input 「0000」 to complete the pairing.



6. Once you complete the pairing, that means your Bluetooth stereo speaker is already connected to your PC. There will be a red mark near by the speaker icon.
7. If you want to use the AV profile, press , and the PC will connect with your Bluetooth stereo speaker by the AV profile. Then all processes are complete. The sound output device will change to Bluetooth. Now listen the music from the PC will go through the Bluetooth stereo speaker.



8. If you want to disconnect the connection, right click the , and select disconnect, The speaker will be disconnected from the PC.



## How to Connect your Bluetooth Device

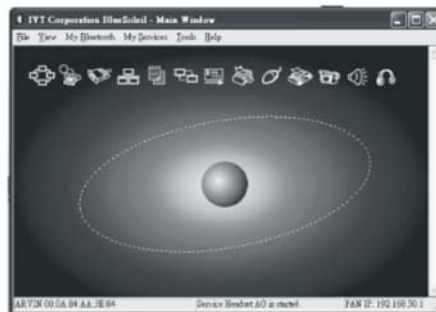
### Connect with your PC/NB:


The Bluetooth speaker supports A2DP/AVRCP protocol. The speaker can control windows media player volume, track, and stop/pause functions. If your PC/NB does not have a Bluetooth device embedded, insert the Bluetooth USB dongle and bundled software so you can connect your Bluetooth speaker with your PC/NB.

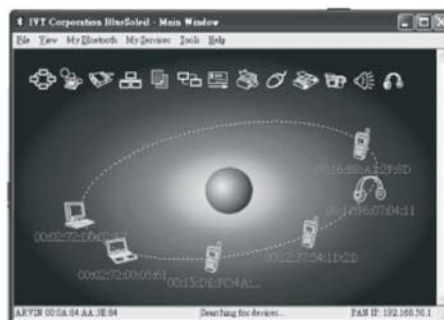
1. Put the bundled CD into your CD-ROM. Windows will auto install the IVT Software (The bundled IVT software version is Ver 2.6. If the PC did not run the auto screen, find the E:/IVT software/Setup, exe, click the file, and the PC will start to install the software.
2. After the IVT software install is complete, the Bluetooth icon will show up on a corner of the screen.

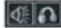


Double click on the icon, and the IVT software will pop-up on the screen.



3. Make your Bluetooth speaker at pair mode, then press the orange button  in the middle. The Software will start to search all Bluetooth devices in the effective distance.



4. When the searching is complete, click the BT stereo speaker on the screen, and the top icon "AV profile" and "speaker"  profile will light up.





## End of Life Battery Disposal Instructions

### End-of-Life Battery Disposal Instructions

This device uses a non-user replaceable, rechargeable Li-Polymer battery that should last the lifetime of the device. Frequent charging of Li-Polymer type batteries is encouraged and may prolong battery life as Li-Polymer technologies do not exhibit a battery 'memory' like other battery technologies do. Also, deep discharging should be avoided as this may adversely affect battery life. If you suspect your battery may be dead, try charging it. *This device does not have a use-replaceable battery.* Please do not attempt to replace the battery. If the battery has died, you should follow the disposal (recycling) instructions below. Consult local laws and regulations for proper battery and electronic product disposal in your region. If there are no local regulations concerning battery disposal, please dispose battery in a waste (recycling) bin designated specifically for electronic devices.



**Caution:** The battery used in this device may present a risk of fire, explosion, or chemical burn if mistreated. This is NOT a user-replaceable battery. **Do not** attempt to replace the battery

The battery shall not be exposed to excessive heat such as sunshine, fire, or the like. Do not crush, disassemble or incinerate (dispose in fire) the battery. Do not use or charge the battery if it appears to be leaking, discolored, deformed, or in any way abnormal. Do not leave the battery discharged or unused for extended periods of time. When batteries are unused, they may explode or leak, causing burns and personal injury. If your battery leaks, use normal precaution. Dispose of used battery promptly and properly keep away from children.

### RECYCLING INFORMATION FOR LI-POLYMER BATTERIES

#### Battery removal for the purpose of disposing



**Caution: Use safety goggles when disassembling your device.**

1. Begin to back of the device.
2. Remove four (4) small screws with screw driver, remove the back cover.
3. Remove two (2) small screws of Battery's plastic bracket with screw driver.
4. Remove bracket of battery and disconnect battery.
5. Properly dispose of battery

